

UNITED STATES
DEPARTMENT OF INTERIOR
BUREAU OF LAND MANAGEMENT

FORM APPROVED
Budget Bureau No. 1004-0135
Expires: March 31, 1993

SUNDRY NOTICE AND REPORTS ON WELLS

Do not use this form for proposals to drill or to deepen or reentry to a different reservoir. Use "APPLICATION TO DRILL" for permit for such proposals

5. Lease Designation and Serial No.
NMSF-078767

6. If Indian, Allottee or Tribe Name

7. If Unit or CA, Agreement Designation

SUBMIT IN TRIPPLICATE

RECEIVED

1. Type of Well
Oil Well ☒ Gas Well ☐ Other ☐

DEC 17 2007

8. Well Name and No.
ROSA UNIT #226A

2. Name of Operator
WILLIAMS PRODUCTION COMPANY

Bureau of Land Management
Farmington Field Office

9. API Well No.
30-039-27817

3. Address and Telephone No.
PO BOX 3102 MS 25-4, TULSA, OK 74101 (918) 573-3046

10. Field and Pool, or Exploratory Area
BASIN FRUITLAND COAL

4. Location of Well (Footage, Sec., T, R., M., or Survey Description)
1380' FNL & 890' FWL, SW/4 NW/4 SEC 12-T31N-R06W

11. County or Parish, State
RIO ARRIBA, NM

CHECK APPROPRIATE BOX(S) TO INDICATE NATURE OF NOTICE, REPORT, OR OTHER DATA

TYPE OF SUBMISSION

TYPE OF ACTION

Notice of Intent

☒ Subsequent Report

Final Abandonment

Abandonment
Recompletion
Plugging Back
Casing Repair
Altering Casing
Other PU

Change of Plans
New Construction
Non-Routine Fracturing
Water Shut-Off
Conversion to Injection
Dispose Water
(Note: Report results of multiple completion on Well Completion or Recompletion Report and Log form.)

13. Describe Proposed or Completed Operations (Clearly state all pertinent details, and give pertinent dates, including estimated date of starting any proposed work. If well is directionally drilled, give subsurface locations and measured and true vertical depths for all markers and zones pertinent to this work.)*

11-08-2007

MIRU, ND WH, NU BOP, RU pump & manifold, NU blooie lines. Pull tbg hanger, TOH & std back 103 jts prod tbg. Secure well & location, SDON.

11-09-2007

SIP 700#, bleed well down @ 2" line. PU, MU & RIW w/ TIW H-latch retrieving tool & 95 jts 2-7/8" DP, fish 5 1/2" liner, tagged liner top @ 2975', liner came free @ 20M# over string wt. TOH & standback DP. RU SJ csg, pull & LD 8 jts 5 1/2" perforated liner, flow test on well @ 2" line. Pitot for 1 hr 1.5 oz = 190 mcf. SI for nat buildup test, secure well & location, turn over to FB hand & air hand for cavitation. Cavitate well from surface w/ natural & energized surges.

11-10-2007

Cavitate from surface w/ nat & energized surges. Returns lt coal dust, lt mist & lt dry gas.

RCVD DEC 18 '07
OIL CONS. DIV.

11-11-2007

Cavitate from surface w/ nat & energized surges. Returns lt coal dust, lt mist & lt dry gas.

DIST. 3

Completion of work continued on attached sheets:

14. I hereby certify that the foregoing is true and correct

Signed

Rachel Lipperd
Rachel Lipperd

Title Engineering Technician

Date December 13, 2007

(This space for Federal or State office use)

Approved by

Title

Date

Conditions of approval, if any:

ACCEPTED FOR RECORD

Title 18 U.S.C. Section 1001, makes it a crime for any person knowingly and willfully to make to any department or agency of the United States any false, fictitious or fraudulent statements or representations as to any matter within its jurisdiction.

DEC 17 2007

NMOCD

FARMINGTON FIELD OFFICE

11-12-2007

SIP 300#, surge well to pit, returned no solids & lt mist. TIH w/ DC's & DP, tagged bridge @ 3020', break circ, unloading heavy fine to 1/8" coal & heavy large shale up to 2", w/ heavy grey wtr. Work pipe & pump sweeps as needed to CO to TD @ 3288'. LD DP sgls, pull into 7" csg. Pitot well every 15 min for 1 hr = 1 oz = 158 mcf. Secure well & location, turn well over to FB hand & air hand for overnight cavitation.

11-13-2007

SIP 250#, surge well to pit, returned med coal fines & lt mist. PU DP sgls & ck for fill, tagged bridge @ 3165', est circ, well unloaded heavy fine to 1/4" coal & heavy shale up to 2" w/ heavy black wtr. Pump sweeps & work pipe. Tagged solid fill @ 3276' 12' of fill. CO to TD @ 3288'. LD DP sgls, pull into 7" csg. Cavitate from shoe w/ natural & energized surges, chase all surges w/ air-mist until returns are clean.

11-14-2007

SIP 300#, surge well to pit, returned lt coal dust & heavy grey wtr. PU DP sgls & check for fill, tagged bridge @ 3010', est circ, well unloaded med fine to 1/4" coal & med shale up to 1", about 50% w/ heavy black wtr. Pump sweeps & work pipe. Hole is very tight w/ a lot of torque on PS, well is making lt fines. CO to TD @ 3288', LD DP sgls, got stuck @ 3230' worked pipe & equalized down backside, open hole cont to be very tight & sticky. Pull into 7" csg, flow test well @ 2" line. Pitot for 1 hr, press 1.5 oz, rate 190 mcf. Cavitate from shoe w/ nat & energized surges, chase all surges w/ air-mist until returns are clean.

11-15-2007

SIP 350#, surge well to pit, returned lt coal dust & lt mist. PU DP sgls & ck for fill, tagged bridge @ 3030', est circ, well unloaded med fine to 1/4" coal & med shale up to 1", about 50% w/ heavy black wtr. Pump sweeps & work pipe. Hole is very tight w/ a lot of torque on PS. Well is making light fines. CO to TD @ 3288'. LD DP sgls, open hole continued to be very tight & sticky. Cavitate from shoe w/ natural surges, chase all surges w/ air-mist until returns are clean.

11-16-2007

SIP 400#, surge well to pit, returned lt coal dust & lt mist. PU DP sgls & ck for fill, tagged bridge @ 3040', est circ, unloaded med fine to 1/4" coal & shale about 50%. Tagged 2nd bridge @ 3080' making fine to 1/4" coal & shale still about 50%. Tagged fill @ 3250' 38' of solid fill. CO heavy coal & shale w/ thick black wtr, CO to TD @ 3288'. LD DP sgls, open hole still tight but not as sticky. Flow test well @ 2" line, pitot for 1 hr, press 2 oz, rate 217 mcf. Cavitate from shoe w/ nat & energized surges, chase all surges w/ air-mist until returns are clean.

11-17-2007

Cavitate from shoe w/ nat & energized surges, 4 hr SIP 500#, returns lt fines, lt mist & lt gas. Chase all surges w/ air-mist until returns are clean.

11-18-2007

Cavitate from shoe w/ natural & energized surges, 4 hr SIP 350#, returns lt fines, lt mist & lt gas. Chase all surges w/ air-mist until returns are clean.

11-19-2007

SICP 350#, surge well to pit, returned lt coal dust & lt mist. PU DP sgls & check for fill, tagged bridge @ 3014', est circ, unloaded lt fine to 1/4" coal & shale about 50%. Tagged 2nd bridge @ 3080' making med fine to 1/4" coal & shale still about 50%. Tagged fill @ 3202' 86' of solid fill. CO heavy coal & shale w/ thick black wtr, CO to TD @ 3288'. LD DP sgls, pull into 7" csg. FLOW TEST: Duration = 1 hr, Test Method = pitot, MCF/D = 158, Csg Psi = 1oz, tbg Psi = 0 psi, Gas Type = Dry, Gas Disposition = non flaring, Choke Size = 2" open line. Secure well & location, turn well over to FB hand & AH for overnight cavitation. Cavitate from shoe w/ nat & energized surges, chase all surges w/ air-mist until returns are clean.

11-20-2007

SIP 375#, surge well to pit, returned lt coal dust & lt mist. PU DP sgls & check for fill, tagged bridge @ 3080', est circ, unloaded lt fine to 1/4" coal & shale about 50%. Tagged fill @ 3260' 28' of loose fill. CO med coal & shale w/ thick black wtr. CO to TD @ 3288'. Very slight drag going in hole. LD DP sgls, pull into 7" csg. Cavitate from shoe w/ nat & energized surges, chase all surges w/ air-mist until returns are clean.

11-21-2007

Cavitate from shoe w/ nat & energized surges. Returns lt coal fines, lt mist & lt dry gas. SIP 450#, surge well to pit, returned lt coal dust & lt mist. PU DP sgls & check for fill, tagged bridge @ 3155', est circ, unloaded lt fine to 1/4" coal & shale about 50%. Tagged fill @ 3271' 17' of loose fill. CO med coal & shale w/ thick black wtr. CO to TD @ 3288'. Very slight drag going in hole. LD DP sgls, pull into 7" csg. SD for Thanksgiving holiday until 11/23/07.

11-23-2007

SI from 15:00 11/21/07 until 7:00 11/23/07. SICP 550# = 1 hr SI, 15 min = 50 psi, 30 mins = 75 psi, 45 mins = 100 psi, 1 hr = 125 psi, cavitate from shoe w/ nat surges. Returns lt coal dust, lt mist & lt dry gas.

11-24-2007

Cavitate from shoe w/ nat surges. Returns lt coal dust, lt mist & lt dry gas.

11-25-2007

SICP 510#, surge well to pit returned lt dust, lt mist & dry gas. Thaw out fuel lines, air lines on rig & air package. PU DP sgls, tag fill @ 3280' 8' of loose fill. Circ w/ air-mist, work pipe & pump sweeps, CO to TD @ 3288'. Returned lt fine to 1/8" solids & heavy black wtr. LD DP sgls, pull into 7" csg. FLOW TEST: Duration = 1 hr, Test Method = pitot, MCF/D = 286, Csg Psi = 3.5 oz, tbg Psi = 0 psi, Gas Type = Dry, Gas Disposition = non flaring, Choke Size = 2" open line. Secure well & location, turn well over to FB hand, flow well overnight.

11-26-2007

PU DP sgls, tag bridge @ 3045', circ w/ air-mist, work pipe & pump sweeps, running heavy coal & shale w/ heavy torque on PS. Released csg crew & TIW toolhand @ 12:00 still 5 jts off bottom. CO to 3206' 3 jts off TD, well cont to unload heavy fine to 1/2" solids mostly shale. LD DP sgls, pull into 7" csg. Secure well, freeze protect equip & SION.

11-27-2007

SICP 500#, bleed well down @ 2" line. PU DP sgls, tag bridge @ 3194', circ w/ air-mist, work pipe & pump sweeps, CO solid bridge from 3194' to 3222', unloaded heavy coal & shale up to 2" dia., tagged fill @ 3276' 12' of fill. CO to TD @ 3288'. LD DP sgls, pull into 7" csg. Secure well & freeze protect equip, SION.

11-28-2007

SICP 500#, bleed well down @ 2" line. PU DP sgls, tag bridge @ 3194', circ w/ air-mist, work pipe & pump sweeps, unloaded heavy coal & shale, cleared bridge, tagged fill @ 3284' 4' of fill. LD 15 jts DP, hang back PS, TOH & standback DP & DC's. FLOW TEST: Duration = 1 hr, Test Method = pitot, MCF/D = 372, Csg Psi = 6oz, tbg Psi = 0 psi, Gas Type = Dry, Gas Disposition = non flaring, Choke Size = 2" open line, PU, MU & RIW as follows-LA set shoe, 8 jts, 5.5", 17#, N-80, EUE csg (365.06'), H-latch, TIW setting tool. RIW w/ liner assy & 93 jts AOH DP, tag @ 3194' 94' off TD, circ & rotate liner to 3204' free from there, release liner @ 3288' on TD. PBTD 3287'. Liner top @ 2920', liner bottom @ 3288' 94' overlap. RD & LD 2.5 PS, TOH & LD DP. Secure well & location, SWION.

11-29-2007

SICP 500#, bleed well down @ 2" line. LD DP & DC's, RU Basin WL, perf 5 1/2" liner as follows bottom to top, 3168' to 3032' 80' 320 shots @ 4 spf w/ 0.50" EHD. Tally, PU, MU & RIH as follows- 2 7/8" mud anchor, 2.28 F-nipple, 103 jts 2-7/8" J-55 tbg. Test tbg every 15 stands to 900 psig, hold for 15min, good test. RIW w/ overshot & sinker bar on sandline, fish standing valve. Parted sandline trying to pull standing valve, SION.

11-30-2007

SICP 550#, bleed well down @ 2" line. POOW & standback tbg, cut sandline each stand. Standing valve was stuck in the F-nipple, tbg OK. Sandline was parted @ 960'. RIH as follows- 2 7/8" mud anchor, 2.28 F-nipple, 96 jts 2-7/8" J-55 tbg. WO Dyna Coil, RD unneeded equip, release air package & load out. RU Dyna Coil, PU & RIW 7 jts tbg, attach Dyna Coil 1/4" chem line on top 7 jts 220'. PU tbg hanger, land tbg. EOT @ 3257, 30' off PBTD, 2.28 F-nipple @ 3231'. RD tongs & rig floor. ND BOP, ND Blooie lines. NU SR WH & SION.

12-01-2007

SICP 550#, bleed well down @ 2" line. PU MU & RIW as follows, gas anchor, 2 1/2" x 1 1/4" x 8 x 12 RHAC pump, 3 3/4 x 1 1/4" sinker rods, 125 -3/4" sucker rods, 1- 8' 1- 6' 1-4' & 1- 2' pony rods & 1-1/4" X 22' polished rod w/ 10' 1-1/2" liner. Energy Pump sent out the wrong size stuffing box, WO stuffing box. Install stuffing box, seat pump & space out pump, load tbg w/ produced wtr, test tbg & pump to 500 psig, release press & stroke pump to 500 psig, test ok. Secure well & location, SD until Monday.

12-03-2007

Lower derrick, RD equip, prepare for rig move. Load out equip & send to town, road rig to AWS yard.

ROSA UNIT #226A FRUITLAND COAL

Location:

1380' FNL and 890' FWL
SW/4 NW/4 Sec 12(E), T31N, R6W
Rio Arriba, New Mexico

Elevation: 6340' GR
API # 30-039-27817

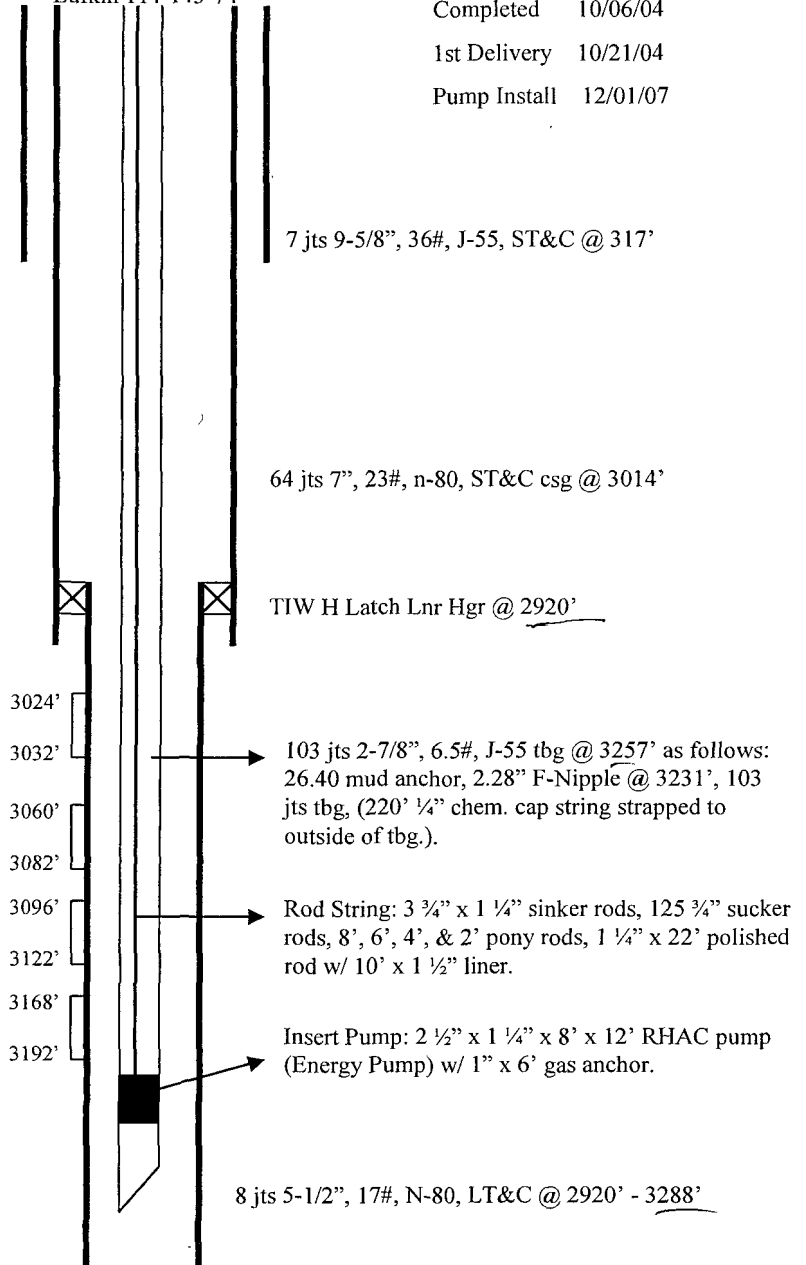
Top	Depth
Ojo Alamo	2408'
Kirtland	2534'
Fruitland	2938'
Pictured Cliffs	3191'

Pumping Unit
Lufkin 114-143-74

Spud 08/26/04
Completed 10/06/04
1st Delivery 10/21/04
Pump Install 12/01/07

0.50", 4 SPF,
320 holes total

Underream 6-1/4" to 9-1/2" from
3020' to 3190'



PBTB @ 3287'
TD @ 3288'

Hole Size	Casing	Cement	Volume	Top of Cmt
12-1/4"	9-5/8", 36#	416 sx	587 cu ft.	Surface
8-3/4"	7", 20#	500 sx	1006 cu ft	Surface
6-1/4"	5-1/2", 17#	Did Not Cmt		