

DISTRICT I  
1625 N. French Dr., Hobbs, N.M. 88240

DISTRICT II  
1301 West Grand Avenue, Artesia, N.M. 88210

DISTRICT III  
1000 Rio Brazos Rd., Aztec, N.M. 87410

DISTRICT IV  
1220 S. St. Francis Dr., Santa Fe, NM 87505

State of New Mexico  
Energy, Minerals & Natural Resources Department

OIL CONSERVATION DIVISION  
1220 South St. Francis Dr.  
Santa Fe, NM 87505

Form C-102  
Revised October 12, 2005

Submit to Appropriate District Office  
State Lease - 4 Copies  
Fee Lease - 3 Copies  
RCVD JAN 25 '08  
☐ AMENDED REPORT

WELL LOCATION AND ACREAGE DEDICATION PLAT

OIL CONS. DIV.  
DIST. 3

<sup>1</sup> API Number 30-039-30314	<sup>2</sup> Pool Code 71599/72319	<sup>3</sup> Pool Name BASIN DAKOTA/BLANCO MESAVERDE
<sup>4</sup> Property Code 7465	<sup>5</sup> Property Name SAN JUAN 29-7 UNIT	<sup>6</sup> Well Number 58N
<sup>7</sup> GRID No. 14538	<sup>8</sup> Operator Name BURLINGTON RESOURCES OIL AND GAS COMPANY LP	<sup>9</sup> Elevation 6334'

<sup>10</sup> Surface Location

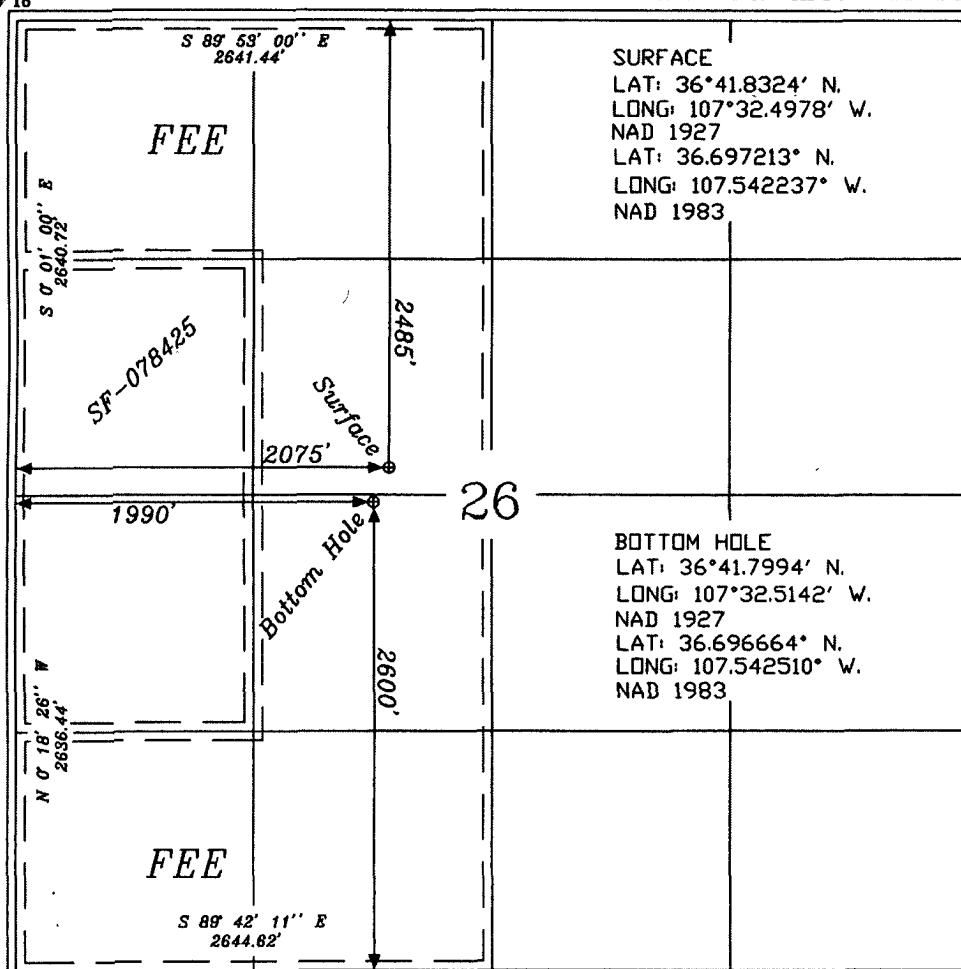
UL or lot no.	Section	Township	Range	Lot Idn	Feet from the	North/South line	Feet from the	East/West line	County
F	26	29-N	7-W		2485'	NORTH	2075'	WEST	RIO ARRIBA

<sup>11</sup> Bottom Hole Location If Different From Surface

UL or lot no.	Section	Township	Range	Lot Idn	Feet from the	North/South line	Feet from the	East/West line	County
K	26	29-N	7-W		2600'	SOUTH	1990'	WEST	RIO ARRIBA

<sup>12</sup> Dedicated Acres BD 320.0 ACRES W/2 MV 320.0 ACRES W/2	<sup>13</sup> Joint or Infill	<sup>14</sup> Consolidation Code	<sup>15</sup> Order No.
---	-------------------------------	----------------------------------	-------------------------

NO ALLOWABLE WILL BE ASSIGNED TO THIS COMPLETION UNTIL ALL INTERESTS HAVE BEEN CONSOLIDATED  
OR A NON-STANDARD UNIT HAS BEEN APPROVED BY THE DIVISION



<sup>17</sup> OPERATOR CERTIFICATION

I hereby certify that the information contained herein is true and complete to the best of my knowledge and belief, and that this organization either owns a working interest or unleased mineral interest in the land including the proposed bottom hole location or has a right to drill this well at this location pursuant to a contract with an owner of such a mineral or a working interest, or to a voluntary pooling agreement or a compulsory pooling order heretofore entered by the division.

*Tamra Sessions*  
Signature

*Tamra Sessions*  
Printed Name

1-24-08

<sup>18</sup> SURVEYOR CERTIFICATION

I hereby certify that the well location shown on this plat was plotted from field notes of actual surveys made by me or under my supervision, and that the same is true and correct to the best of my belief.

1-24-08  
Date of Survey

Signature and Seal of Professional Surveyor:

*Calvin W. Russell*  
Certificate Number 15703