

RECEIVED

Form 3160-3  
(February 2005)

JAN 28 2008

FORM APPROVED  
OMB No. 1004-0137  
Expires March 31, 2007UNITED STATES  
DEPARTMENT OF THE INTERIOR  
BUREAU OF LAND MANAGEMENT  
Farmington Field Office

## APPLICATION FOR PERMIT TO DRILL OR REENTER

1a Type of work: <input checked="" type="checkbox"/> DRILL <input type="checkbox"/> REENTER		5 Lease Serial No. NMN079319
1b. Type of Well: <input type="checkbox"/> Oil Well <input checked="" type="checkbox"/> Gas Well <input type="checkbox"/> Other <input type="checkbox"/> Single Zone <input checked="" type="checkbox"/> Multiple Zone		6. If Indian, Allottee or Tribe Name N/A
2 Name of Operator XTO Energy, Inc.		7 If Unit or CA Agreement, Name and No. N/A
3a Address 382 CR 3100 AZTEC, NM 87410		8. Lease Name and Well No. SCHWERTFEGER A #6G
3b. Phone No. (include area code) 505-333-3100		9 API Well No. 30-045- 34583
4 Location of Well (Report location clearly and in accordance with any State requirements.) At surface 1410' FSL x 2325' FWL At proposed prod. zone 1980' FSL x 660' FWL		10. Field and Pool, or Exploratory DK/MC/MV/CH
14. Distance in miles and direction from nearest town or post office* Approximately 18 miles Southeast of Bloomfield, NM post office		11. Sec., T R. M. or Blk. and Survey or Area (K) SEC 8, T27N, R8W
15 Distance from proposed* location to nearest property or lease line, ft. (Also to nearest drig unit line, if any) 660'	16. No. of acres in lease 2516.33	17. Spacing Unit dedicated to this well W/2DK320,SW/4MC160,W/2MV320,SW/4CH
18. Distance from proposed location* to nearest well, drilling, completed, applied for, on this lease, ft. 712'	19. Proposed Depth 7812'	20. BLM/BIA Bond No on file UTB-000138
21 Elevations (Show whether DF, KDB, RT, GL, etc.) 6757' Ground Elevation	22. Approximate date work will start* 03/13/2008	23. Estimated duration 2 weeks

## 24. Attachments

The following, completed in accordance with the requirements of Onshore Oil and Gas Order No 1, must be attached to this form:

- Well plat certified by a registered surveyor.
- A Drilling Plan
- A Surface Use Plan (if the location is on National Forest System Lands, the SUPO must be filed with the appropriate Forest Service Office).
- Bond to cover the operations unless covered by an existing bond on file (see item 20 above).
- Operator certification
- Such other site specific information and/or plans as may be required by the BLM.

25. Signature <i>Kyla Vaughan</i>	Name (Printed/Typed) Kyla Vaughan	Date 01/25/2008
Title Regulatory Compliance		

Approved by (Signature) <i>[Signature]</i>	Name (Printed/Typed) AFM	Date 4/1/08
Title FFO		

Application approval does not warrant or certify that the applicant holds legal or equitable title to those rights in the subject lease which would entitle the applicant to conduct operations thereon  
Conditions of approval, if any, are attached.

Title 18 U.S.C. Section 1001 and Title 43 U.S.C. Section 1212, make it a crime for any person knowingly and willfully to make to any department or agency of the United States any false, fictitious or fraudulent statements or representations as to any matter within its jurisdiction.

\*(Instructions on page 2)

This action is subject to technical and procedural review pursuant to 43 CFR 3165.3 and appeal pursuant to 43 CFR 3165.4

H<sub>2</sub>S POTENTIAL EXISTS

DRILLING OPERATIONS AUTHORIZED ARE  
SUBJECT TO COMPLIANCE WITH ATTACHED  
"GENERAL REQUIREMENTS"

NOTIFY AZTEC OCD 24 HRS.  
PRIOR TO CASING & CEMENT

Hold C104  
for Directional Survey  
and "As Drilled" plat  
+ open hole logs @ sometime  
**SEE ATTACHED FOR  
CONDITIONS OF APPROVAL**

# APD/ROW

INMOCD

APR 04 2008

AV

DISTRICT I  
1625 N. French Dr., Hobbs, N.M. 88240

DISTRICT II  
1301 W. Grand Ave., Artesia, N.M. 88210

DISTRICT III  
1000 Rio Brazos Rd., Aztec, N.M. 87410

DISTRICT IV  
1220 South St. Francis Dr., Santa Fe, NM 87505

State of New Mexico  
Energy, Minerals & Natural Resources Department

OIL CONSERVATION DIVISION  
1220 South St. Francis Dr.  
Santa Fe, NM 87505

RECEIVED  
JAN 28 2008  
Submit to Appropriate District Office  
State Lease - 4 Copies  
Fee Lease - 3 Copies  
Bureau of Land Management  
Farmington Field Office

Form C-102  
Revised October 12, 2005

☐ AMENDED REPORT

WELL LOCATION AND ACREAGE DEDICATION PLAT

<sup>1</sup> API Number 30-045-34583	<sup>2</sup> Pool Code 71599	<sup>3</sup> Pool Name Basin Dakota
<sup>4</sup> Property Code 22634	<sup>5</sup> Property Name SCHWERTFEGER A	<sup>6</sup> Well Number 6G
<sup>7</sup> OGRID No. 5380	<sup>8</sup> Operator Name XTO ENERGY INC.	<sup>9</sup> Elevation 6757

<sup>10</sup> Surface Location

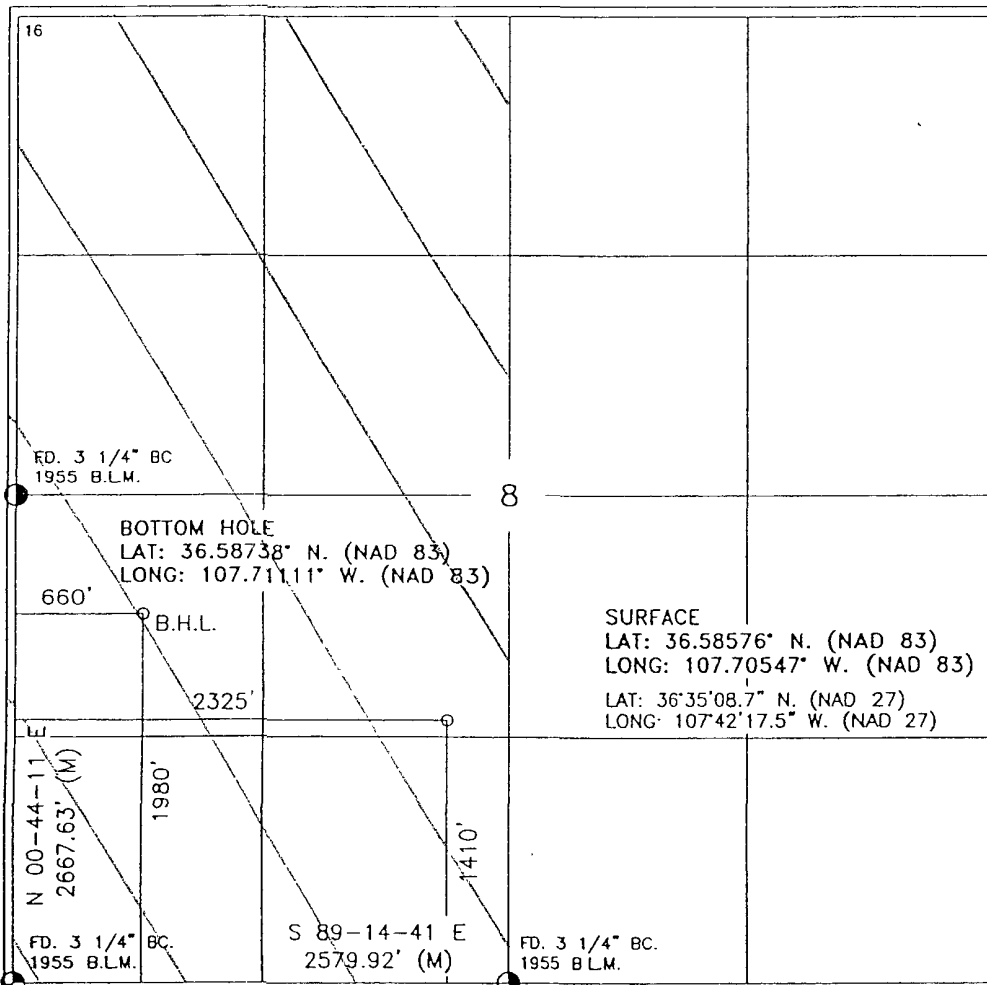
UL or lot no.	Section	Township	Range	Lot Idn	Feet from the	North/South line	Feet from the	East/West line	County
K	8	27-N	8-W		1410	SOUTH	2325	WEST	SAN JUAN

<sup>11</sup> Bottom Hole Location If Different From Surface

UL or lot no.	Section	Township	Range	Lot Idn	Feet from the	North/South line	Feet from the	East/West line	County
L	8	27-N	8-W		1980	SOUTH	660	WEST	SAN JUAN

<sup>12</sup> Dedicated Acres w/2 320	<sup>13</sup> Joint or Infill	<sup>14</sup> Consolidation Code	<sup>15</sup> Order No
--	-------------------------------	----------------------------------	------------------------

NO ALLOWABLE WILL BE ASSIGNED TO THIS COMPLETION UNTIL ALL INTERESTS HAVE BEEN CONSOLIDATED OR A NON-STANDARD UNIT HAS BEEN APPROVED BY THE DIVISION



17

OPERATOR CERTIFICATION

I hereby certify that the information contained herein is true and complete to the best of my knowledge and belief, and that this organization either owns a working interest or unleased mineral interest in the land including the proposed bottom hole location or has a right to drill this well at this location pursuant to a contract with an owner of such a mineral or working interest, or to a voluntary pooling agreement or a compulsory pooling order heretofore entered by the division.

Signature: S. Johnson Date: 8/15/07

Printed Name: S. Johnson

18

SURVEYOR CERTIFICATION

I hereby certify that the well location shown on this plat was plotted from field notes of actual surveys made by me or under my supervision, and that the same is true and correct to the best of my belief.

Date of Survey: MARCH 27, 2007

Signature and Seal of Professional Surveyor: [Signature]

Certificate Number: 8894

DISTRICT I  
1625 N. French Dr., Hobbs, N.M. 88240

DISTRICT II  
1301 W. Grand Ave., Artesia, N.M. 88210

DISTRICT III  
1000 Rio Brazos Rd., Aztec, N.M. 87410

DISTRICT IV  
1220 South St. Francis Dr., Santa Fe, NM 87505

State of New Mexico  
Energy, Minerals & Natural Resources Department

OIL CONSERVATION DIVISION  
1220 South St. Francis Dr.  
Santa Fe, NM 87505

Form C-102

Revised October 12, 2005

Submit to Appropriate District Office  
State Lease - 4 Copies  
Fee Lease - 3 Copies

☐ AMENDED REPORT

### WELL LOCATION AND ACREAGE DEDICATION PLAT

<sup>1</sup> API Number 30-045-34583	<sup>2</sup> Pool Code 97232	<sup>3</sup> Pool Name McBasin Mancos
<sup>4</sup> Property Code 22634	<sup>5</sup> Property Name SCHWERTFEGER A	<sup>6</sup> Well Number 6G
<sup>7</sup> GRID No. 5380	<sup>8</sup> Operator Name XTO ENERGY INC.	<sup>9</sup> Elevation 6757

#### <sup>10</sup> Surface Location

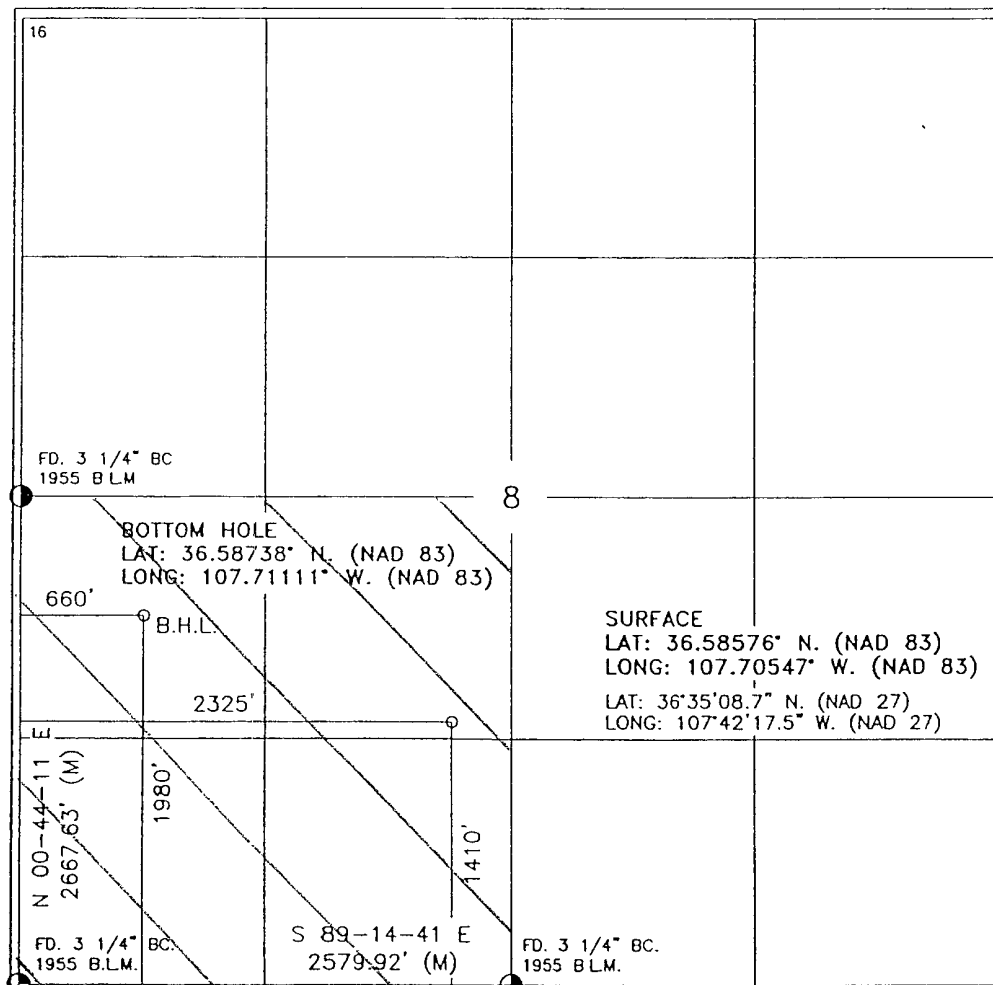
UL or lot no.	Section	Township	Range	Lot Idn	Feet from the	North/South line	Feet from the	East/West line	County
K	8	27-N	8-W		1410	SOUTH	2325	WEST	SAN JUAN

#### <sup>11</sup> Bottom Hole Location If Different From Surface

UL or lot no	Section	Township	Range	Lot Idn	Feet from the	North/South line	Feet from the	East/West line	County
L	8	27-N	8-W		1980	SOUTH	660	WEST	SAN JUAN

<sup>12</sup> Dedicated Acres SW 1/4 160	<sup>13</sup> Joint or Infill	<sup>14</sup> Consolidation Code	<sup>15</sup> Order No.
---	-------------------------------	----------------------------------	-------------------------

NO ALLOWABLE WILL BE ASSIGNED TO THIS COMPLETION UNTIL ALL INTERESTS HAVE BEEN CONSOLIDATED OR A NON-STANDARD UNIT HAS BEEN APPROVED BY THE DIVISION



<h4>17 OPERATOR CERTIFICATION</h4> <p>I hereby certify that the information contained herein is true and complete to the best of my knowledge and belief, and that this organization either owns a working interest or unleased mineral interest in the land including the proposed bottom hole location or has a right to drill this well at this location pursuant to a contract with an owner of such a mineral or working interest, or to a voluntary pooling agreement or a compulsory pooling order heretofore entered by the division.</p> <p>Signature: <i>[Signature]</i> Date: 8/15/07</p> <p>Printed Name: <i>[Signature]</i></p>
<h4>18 SURVEYOR CERTIFICATION</h4> <p>I hereby certify that the well location shown on this plat was plotted from field notes of actual surveys made by me or under my supervision, and that the same is true and correct to the best of my belief.</p> <p>Date of Survey: MARCH 27, 2007</p> <p>Signature and Seal of Professional Surveyor: <i>[Signature]</i></p> <p>Certificate Number: 8894</p>

DISTRICT I  
1625 N. French Dr., Hobbs, N.M. 88240

DISTRICT II  
1301 W. Grand Ave., Artesia, N.M. 88210

DISTRICT III  
1000 Rio Brazos Rd., Aztec, N.M. 87410

DISTRICT IV  
1220 South St. Francis Dr., Santa Fe, NM 87505

State of New Mexico  
Energy, Minerals & Natural Resources Department

OIL CONSERVATION DIVISION

1220 South St. Francis Dr.  
Santa Fe, NM 87505

Form C-102

Revised October 12, 2005

Submit to Appropriate District Office

State Lease - 4 Copies

Fee Lease - 3 Copies

☐ AMENDED REPORT

WELL LOCATION AND ACREAGE DEDICATION PLAT

<sup>1</sup> API Number 30-045-34583	<sup>2</sup> Pool Code 72319	<sup>3</sup> Pool Name Blanco Mesa Verde
<sup>4</sup> Property Code 22634	<sup>5</sup> Property Name SCHWERTFEGER A	<sup>6</sup> Well Number 6G
<sup>7</sup> OGRID No 5380	<sup>8</sup> Operator Name XTO ENERGY INC.	<sup>9</sup> Elevation 6757

<sup>10</sup> Surface Location

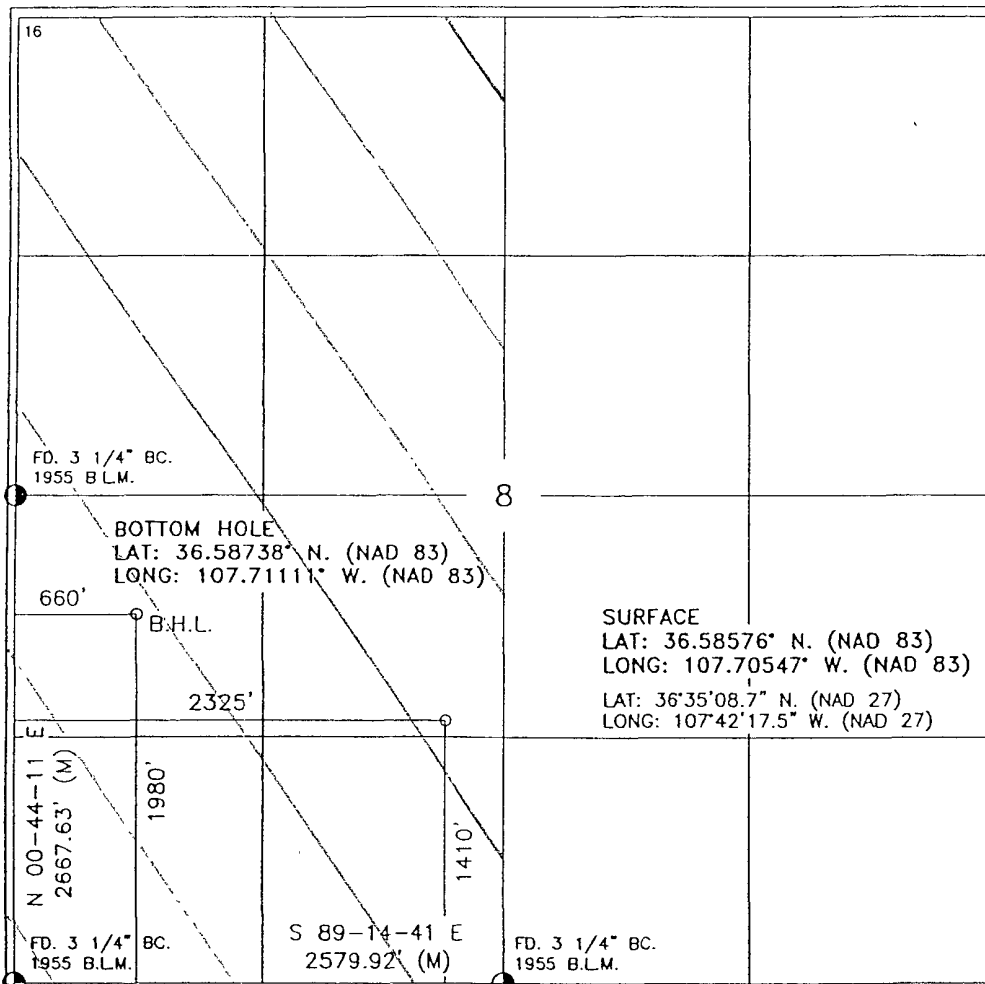
UL or lot no.	Section	Township	Range	Lot Idn	Feet from the	North/South line	Feet from the	East/West line	County
K	8	27-N	8-W		1410	SOUTH	2325	WEST	SAN JUAN

<sup>11</sup> Bottom Hole Location If Different From Surface

UL or lot no.	Section	Township	Range	Lot Idn	Feet from the	North/South line	Feet from the	East/West line	County
L	8	27-N	8-W		1980	SOUTH	660	WEST	SAN JUAN

<sup>12</sup> Dedicated Acres W/2 320	<sup>13</sup> Joint or Infill	<sup>14</sup> Consolidation Code	<sup>15</sup> Order No.
--	-------------------------------	----------------------------------	-------------------------

NO ALLOWABLE WILL BE ASSIGNED TO THIS COMPLETION UNTIL ALL INTERESTS HAVE BEEN CONSOLIDATED  
OR A NON-STANDARD UNIT HAS BEEN APPROVED BY THE DIVISION



<sup>17</sup> OPERATOR CERTIFICATION

I hereby certify that the information contained herein is true and complete to the best of my knowledge and belief, and that this organization either owns a working interest or unleased mineral interest in the land including the proposed bottom hole location or has a right to drill this well at this location pursuant to a contract with an owner of such a mineral or working interest, or to a voluntary pooling agreement or a compulsory pooling order heretofore entered by the division.

Signature: S. J. H. Date: 8/15/07

Printed Name: S. J. H.

<sup>18</sup> SURVEYOR CERTIFICATION

I hereby certify that the well location shown on this plat was plotted from field notes of actual surveys made by me or under my supervision, and that the same is true and correct to the best of my belief.

Date of Survey: MARCH 27, 2007

Signature and Seal of Professional Surveyor: [Signature]

Certificate Number: 8894

DISTRICT I  
1625 N. French Dr., Hobbs, N.M. 88240

DISTRICT II  
1301 W. Grand Ave., Artesia, N.M. 88210

DISTRICT III  
1000 Rio Brazos Rd., Aztec, N.M. 87410

DISTRICT IV  
1220 South St. Francis Dr., Santa Fe, NM 87505

State of New Mexico  
Energy, Minerals & Natural Resources Department

OIL CONSERVATION DIVISION

1220 South St. Francis Dr.  
Santa Fe, NM 87505

Form C-102

Revised October 12, 2005

Submit to Appropriate District Office

State Lease - 4 Copies

Fee Lease - 3 Copies

☐ AMENDED REPORT

WELL LOCATION AND ACREAGE DEDICATION PLAT

<sup>1</sup> API Number 30045-34583	<sup>2</sup> Pool Code 82329	<sup>3</sup> Pool Name Otero Chacra
<sup>4</sup> Property Code 22634	<sup>5</sup> Property Name SCHWERTFEGER A	<sup>6</sup> Well Number 6G
<sup>7</sup> OGRID No. 5380	<sup>8</sup> Operator Name XTO ENERGY INC.	<sup>9</sup> Elevation 6757

<sup>10</sup> Surface Location

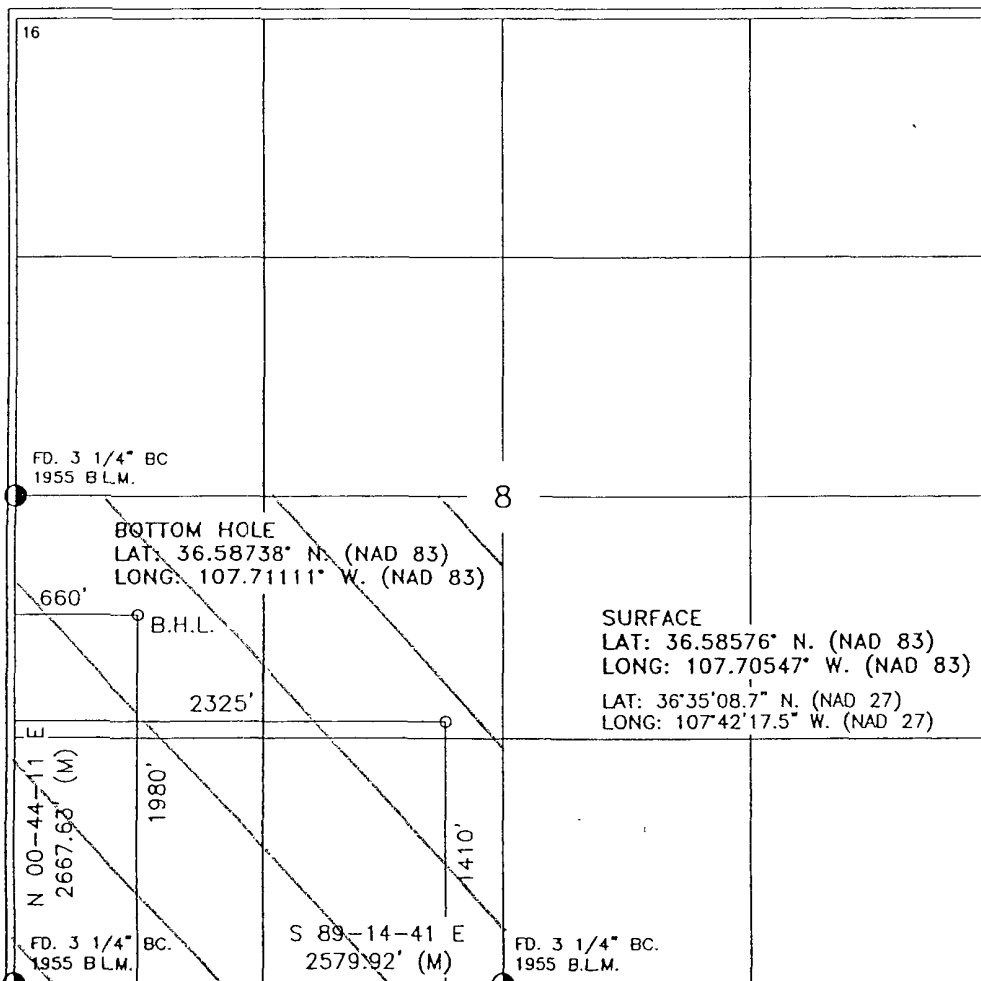
UL or lot no.	Section	Township	Range	Lot Idn	Feet from the	North/South line	Feet from the	East/West line	County
K	8	27-N	8-W		1410	SOUTH	2325	WEST	SAN JUAN

<sup>11</sup> Bottom Hole Location If Different From Surface

UL or lot no.	Section	Township	Range	Lot Idn	Feet from the	North/South line	Feet from the	East/West line	County
L	8	27-N	8-W		1980	SOUTH	660	WEST	SAN JUAN

<sup>12</sup> Dedicated Acres SW 1/4 160	<sup>13</sup> Joint or Infill	<sup>14</sup> Consolidation Code	<sup>15</sup> Order No.
---	-------------------------------	----------------------------------	-------------------------

NO ALLOWABLE WILL BE ASSIGNED TO THIS COMPLETION UNTIL ALL INTERESTS HAVE BEEN CONSOLIDATED  
OR A NON-STANDARD UNIT HAS BEEN APPROVED BY THE DIVISION



<p>16</p> <p>FD. 3 1/4" BC 1955 B.L.M.</p> <p>8</p> <p>BOTTOM HOLE LAT: 36.58738° N. (NAD 83) LONG: 107.71111° W. (NAD 83)</p> <p>B.H.L.</p> <p>660'</p> <p>2325'</p> <p>1980'</p> <p>1410'</p> <p>S 89-14-41 E 2579.92' (M)</p> <p>FD. 3 1/4" BC. 1955 B.L.M.</p>	<p>17</p> <p>OPERATOR CERTIFICATION</p> <p>I hereby certify that the information contained herein is true and complete to the best of my knowledge and belief, and that this organization either owns a working interest or unleased mineral interest in the land including the proposed bottom hole location or has a right to drill this well at this location pursuant to a contract with an owner of such a mineral or working interest, or to a voluntary pooling agreement or a compulsory pooling order heretofore entered by the division</p> <p>Signature: <u>[Signature]</u> Date: <u>8/15/07</u></p> <p>Printed Name: <u>Johnson</u></p>
	<p>18</p> <p>SURVEYOR CERTIFICATION</p> <p>I hereby certify that the well location shown on this plat was plotted from field notes of actual surveys made by me or under my supervision, and that the same is true and correct to the best of my belief</p> <p>Date of Survey: <u>MARCH 2007</u></p> <p>Signature and Seal of Professional Surveyor: <u>[Signature]</u></p> <p>Certificate Number: <u>8894</u></p>

Submit 3 Copies To Appropriate District  
Office  
District I  
1625 N. French Dr., Hobbs, NM 87240  
District II  
1301 W. Grand Ave., Artesia, NM 88210  
District III  
1000 Rio Brazos Rd., Aztec, NM 87410  
District IV  
1220 S. St. Francis Dr., Santa Fe, NM 87505

State of New Mexico  
Energy, Minerals and Natural Resources

Form C-103  
May 27, 2004

OIL CONSERVATION DIVISION  
1220 South St. Francis Dr.  
Santa Fe, NM 87505

WELL API NO. <b>30.045.34583</b>
5. Indicate Type of Lease STATE <input type="checkbox"/> FEE <input type="checkbox"/>
6. State Oil & Gas Lease No.
7. Lease Name or Unit Agreement Name: <b>SCHNEIDT/FEGER A</b>
8. Well Number <b>#6G</b>
9. OGRID Number <b>5380</b>
10. Pool name or Wildcat <b>DK/MC/MV/CH</b>

**SUNDRY NOTICES AND REPORTS ON WELLS**  
(DO NOT USE THIS FORM FOR PROPOSALS TO DRILL OR TO DEEPEN OR PLUG BACK TO A DIFFERENT RESERVOIR. USE "APPLICATION FOR PERMIT" (FORM C-101) FOR SUCH PROPOSALS.)

1. Type of Well: Oil Well <input type="checkbox"/> Gas Well <input checked="" type="checkbox"/> Other
2. Name of Operator <b>XTO Energy Inc.</b>
3. Address of Operator <b>382 CR 3100 AZTEC, NM 87410 505-333-3100</b>
4. Well Location Unit Letter <b>K</b> : <b>1410</b> feet from the <b>SOUTH</b> line and <b>2325</b> feet from the <b>WEST</b> line Section <b>8</b> Township <b>27N</b> Range <b>8W</b> NMPM <b>NMPM</b> County <b>SAN JUAN</b>
11. Elevation (Show whether DR, RKB, RT, GR, etc.) <b>6757' GROUND ELEVATION</b>
Pit or Below-grade Tank Application <input checked="" type="checkbox"/> or Closure <input type="checkbox"/> Pit type <b>DRILL</b> Depth to Groundwater <b>&gt;100</b> Distance from nearest fresh water well <b>&gt;1000</b> Distance from nearest surface water <b>&gt;1000</b> Pit Liner Thickness: <b>12</b> mil Below-Grade Tank: Volume <b>8000</b> bbls; Construction Material

12. Check Appropriate Box to Indicate Nature of Notice, Report, or Other Data

**NOTICE OF INTENTION TO:**

PERFORM REMEDIAL WORK ☐ PLUG AND ABANDON ☐  
TEMPORARILY ABANDON ☐ CHANGE PLANS ☐  
PULL OR ALTER CASING ☐ MULTIPLE COMPLETION ☐

OTHER: **PIT**

☒

**SUBSEQUENT REPORT OF:**

REMEDIAL WORK ☐ ALTERING CASING ☐  
COMMENCE DRILLING OPNS. ☐ PLUG AND ABANDONMENT ☐  
CASING TEST AND CEMENT JOB ☐

OTHER:

☐

13. Describe proposed or completed operations. (Clearly state all pertinent details, and give pertinent dates, including estimated date of starting any proposed work). SEE RULE 1103. For Multiple Completions: Attach wellbore diagram of proposed completion or recompletion.

**XTO Energy plans to construct a lined pit on location for drilling.**

I hereby certify that the information above is true and complete to the best of my knowledge and belief. I further certify that any pit or below-grade tank has been/will be constructed or closed according to NMOCD guidelines ☒ , a general permit ☐ or an (attached) alternative OCD-approved plan ☐

SIGNATURE Kyla Vaughan TITLE Regulatory Compliance DATE 01/25/2008  
E-mail address: kyla\_vaughan@xtoenergy.com  
Type or print name Kyla Vaughan Telephone No. 505-333-3159

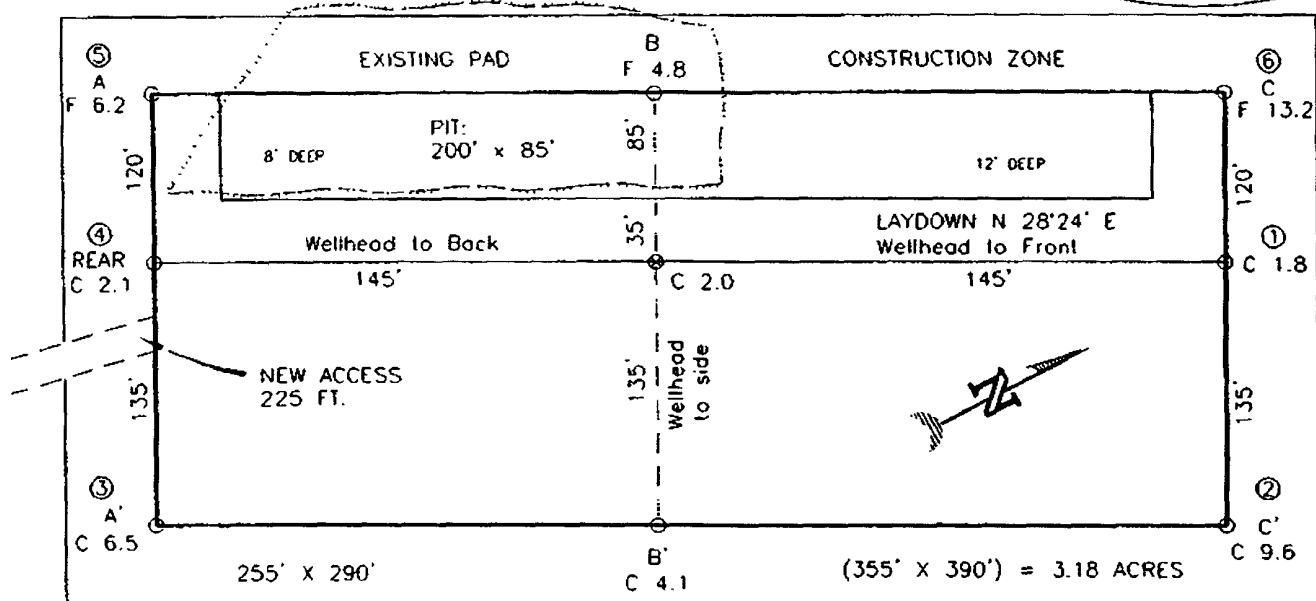
**For State Use Only**

APPROVED BY [Signature] TITLE Deputy Oil & Gas Inspector, District #3 DATE APR 04 2008  
Conditions of Approval, if any:

**EXHIBIT D**

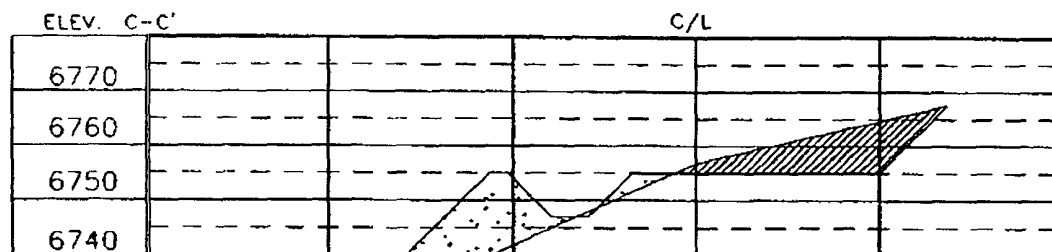
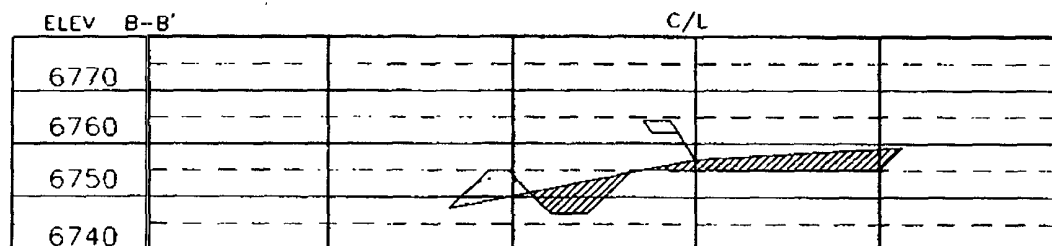
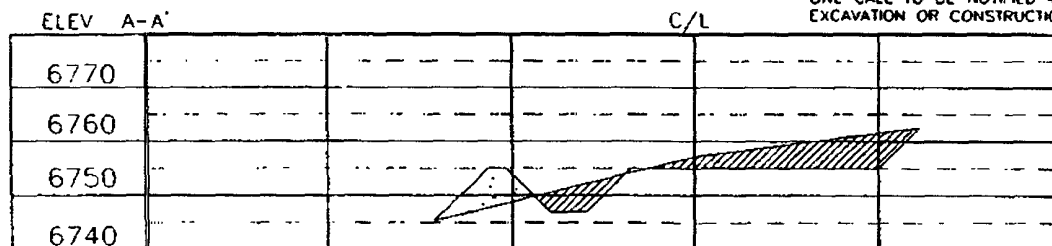
XTO ENERGY INC.  
 SCHWERTFEGER A No. 6G, 1410 FSL 2325 FWL  
 SECTION 8, T27N, R8W, N.M.P.M., SAN JUAN COUNTY, N.M.  
 GROUND ELEVATION: 6757' DATE: MARCH 27, 2007

NAD 83  
 LAT. = 36.58576° N  
 LONG. = 107.70547° W  
 NAD 27  
 LAT. = 36°35'08.7" N  
 LONG. = 107°42'17.5" W



RESERVE PIT DIKE: TO BE 8' ABOVE DEEP SIDE (OVERFLOW - 3' WIDE AND 1' ABOVE SHALLOW SIDE).  
 BLOW PIT OVERFLOW PIPE HALFWAY BETWEEN TOP AND BOTTOM AND TO EXTEND OVER PLASTIC LINER AND INTO BLOW PIT.

NOTE: DAGGETT ENTERPRISES, INC. IS NOT LIABLE FOR UNDERGROUND UTILITIES OR PIPELINES. NEW MEXICO ONE CALL TO BE NOTIFIED 48 HOURS PRIOR TO EXCAVATION OR CONSTRUCTION



NOTE: CONTRACTOR SHOULD CALL ONE-CALL FOR LOCATION OF ANY MARKED OR UNMARKED BURIED PIPELINES OR CABLES ON WELL PAD AND OR ACCESS ROAD AT LEAST TWO (2) WORKING DAYS PRIOR TO CONSTRUCTION

Daggett Enterprises, Inc.  
 Surveying and Oil Field Services  
 P. O. Box 15068 Farmington, NM 87401  
 Phone (505) 326-1772 • Fax (505) 326-6019  
 NEW MEXICO L.S. NO. 8894  
 CAPITAL CR864 PLB  
 DATE 07/19/07

EXHIBIT E

# XTO ENERGY INC.

Schwerdtfeger A #6G

APD Data

January 25, 2008

SHL Location: 1410' FSL x 2325' FWL Sec 8, T27N, R8W County: San Juan State: New Mexico  
BHL Location: 1980' FSL x 660' FWL Sec 8, T27N, R8W

GREATEST PROJECTED TD: 7812'

OBJECTIVE: Basin Dakota / Blanco Mesa Verde / Basin Mancos / Otero Chacra

APPROX GR ELEV: 6757'

Est KB ELEV: 6769' (12' AGL)

## 1. MUD PROGRAM:

INTERVAL	0' to 360'	360' to 2500'	2500' to 7812'
HOLE SIZE	12.25"	7.875"	7.875"
MUD TYPE	FW/Spud Mud	FW/Polymer	LSND / Gel Chemical
WEIGHT	8.6-9.0	8.4-8.8	8.6- 9.20
VISCOSITY	28-32	28-32	45-60
WATER LOSS	NC	NC	8-10

Remarks: Use fibrous materials as needed to control seepage and lost circulation. Pump high viscosity sweeps as needed for hole cleaning. Raise viscosity at TD for logging. Reduce viscosity after logging for cementing purposes.

## 2. CASING PROGRAM:

Surface Casing: 8.625" casing to be set at  $\pm 360'$  in a 12.25" hole filled with 9.20 ppg mud

Interval	Length	Wt	Gr	Cplg	Coll Rating (psi)	Burst Rating (psi)	Jt Str (M-lbs)	ID (in)	Drift (in)	SF Coll	SF Burst	SF Ten
0'-360'	360'	24.0#	J-55	ST&C	1370	2950	244	8.097	7.972	7.950	17.13	28.24

Production Casing: 5.5" casing to be set at TD ( $\pm 7812'$ ) in 7.875" hole filled with 9.20 ppg mud.

Interval	Length	Wt	Gr	Cplg	Coll Rating (psi)	Burst Rating (psi)	Jt Str (M-lbs)	ID (in)	Drift (in)	SF Coll	SF Burst	SF Ten
0'-7812	7812'	15.5#	J-55	ST&C	4040	4810	202	4.950	4.825	1.08	1.29	1.67

## 3. WELLHEAD:

- A. Casing Head: Larkin Fig 92 (or equivalent), 9" nominal, 2,000 psig WP (4,000 psig test) with 8-5/8" 8rnd thread on bottom and 11-3/4" 8rnd thread on top.
- B. Tubing Head: Larkin Fig 612 (or equivalent), 6.456" nominal, 2,000 psig WP (4,000 psig test), 5-1/2" 8rnd female thread on bottom (or slip-on, weld-on), 8-5/8" 8rnd thread on top.

EXHIBIT F



**4. CEMENT PROGRAM (Slurry design may change slightly, but the plan is to circulate cement to surface on both casing strings):**

A. Surface: 8.625", 24.0#, J-55, ST&C casing to be set at  $\pm 360'$  in 12-1/4" hole.

214 sx of Type III cement (or equivalent) typically containing accelerator and LCM, mixed at 14.5 ppg, 1.39 ft<sup>3</sup>/sk, & 6.70 gal wtr/sk.

*Total slurry volume is 297 ft<sup>3</sup>, 100% excess of calculated annular volume to 360'.*

B. Production: 5.5", 15.5#, J-55 (or K-55), ST&C casing to be set at  $\pm 7812'$  in 7.875" hole. DV Tool set @  $\pm 5400'$

1<sup>st</sup> Stage

LEAD:

$\pm 176$  sx of Premium Lite HS (Type III/Poz/Gel) or equivalent, with dispersant, fluid loss, accelerator, & LCM mixed at 12.5 ppg, 2.01 ft<sup>3</sup>/sk, 10.55 gal wtr/sx.

TAIL:

150 sx Type III or equivalent cement with bonding additive, LCM, dispersant, & fluid loss mixed at 14.2 ppg, 1.54 cuft/sx, 8.00 gal/sx.

2<sup>nd</sup> Stage

LEAD:

$\pm 465$  sx of Type III or equivalent cement with 8% gel & LCM mixed at 11.9 ppg, 2.54 ft<sup>3</sup>/sk, 15.00 gal wtr/sx.

TAIL:

100 sx Type III neat mixed at 14.5 ppg, 1.39 cuft/sx, 6.3 gal/sx.

*Total estimated slurry volume for the 5-1/2" production casing is 1905 ft<sup>3</sup>.*

*Note: The slurry design may change slightly based upon actual conditions. Final cement volumes will be determined from the caliper logs plus 40%. It will be attempted to circulate cement to the surface.*

**5. LOGGING PROGRAM:**

A. Mud Logger: None.

B. Open Hole Logs as follows: Run Array Induction/SFL/GR/SP fr/TD (7812') to the bottom of the surface csg. Run Neutron/Lithodensity/Pe/GR/Cal from TD (7812') to 3,000'.

**EXHIBIT F**

6. **FORMATION TOPS:**

Est. KB Elevation: 6769'

FORMATION	Sub-Sea	TVD	MD	FORMATION	Sub-Sea	TVD	MD
Ojo Alamo SS	4853	1948	2300	Gallup	434	6367	6609
Kirtland Shale	5215	1586	1589	Greenhorn	-332	7133	7357
Farmington SS				Graneros	-386	7187	7409
Fruitland Formation	4308	2493	2831	Dakota 1*	-421	7222	7443
Lower Fruitland Coal	3961	2840	3169	Dakota 2*	-453	7254	7475
Pictured Cliffs SS	3903	2898	3226	Dakota 3*	-497	7298	7518
Lewis Shale	3745	3056	3380	Dakota 4*	-552	7353	7571
Chacra SS	2944	3857	4161	Dakota 5*	-587	7388	7605
Cliffhouse SS*	2261	4540	4827	Dakota 6*	-638	7439	7655
Menefee**	2218	4583	4870	Burro Canyon	-675	7476	7692
Point Lookout SS*	1631	5170	5442	Morrison*	-727	7528	7742
Mancos Shale	1254	5547	5810	TD	-799	7600	7812

\* Primary Objective

\*\* Secondary Objective

\*\*\*\* Maximum anticipated BHP should be <2,000 psig ( <0.30 psi/ft) \*\*\*\*\*

7. **COMPANY PERSONNEL:**

Name	Title	Office Phone	Home Phone
Justin Niederhofer	Drilling Engineer	505-333-3199	505-320-0158
Jerry Lacy	Drilling Superintendent	505-333-3177	505-320-6543
John Klutsch	Project Geologist	817-885-2800	--

JN  
1/25/08

EXHIBIT F

**XTO Energy, Inc.**  
Planning Report

**Database:** EDM 2003 14 Single User Db  
**Company:** XTO Energy  
**Project:** San Juan Basin (NAD 83)  
**Site:** Schwerdtfeger A #6G  
**Well:** Schwerdtfeger A #6G  
**Wellbore:** Schwerdtfeger A #6G  
**Design:** Permitted Wellbore

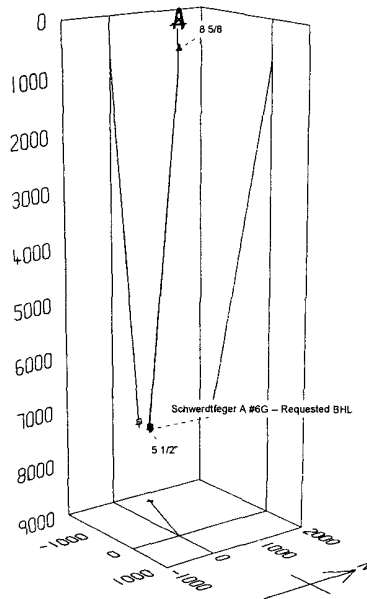
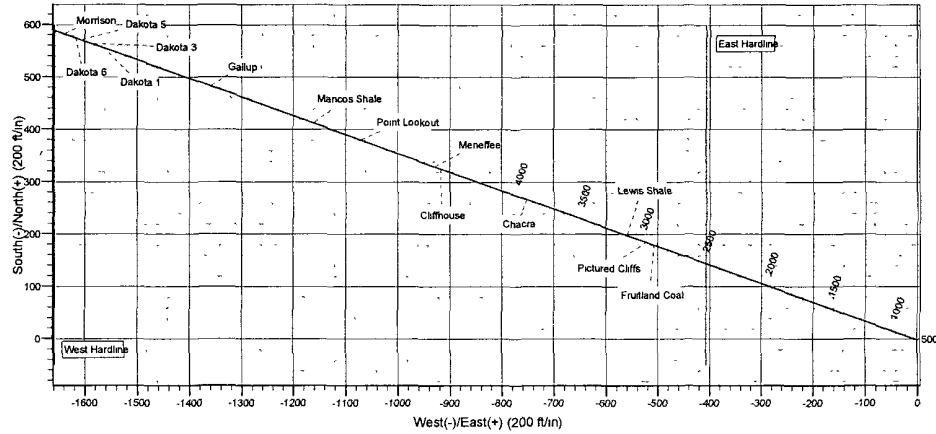
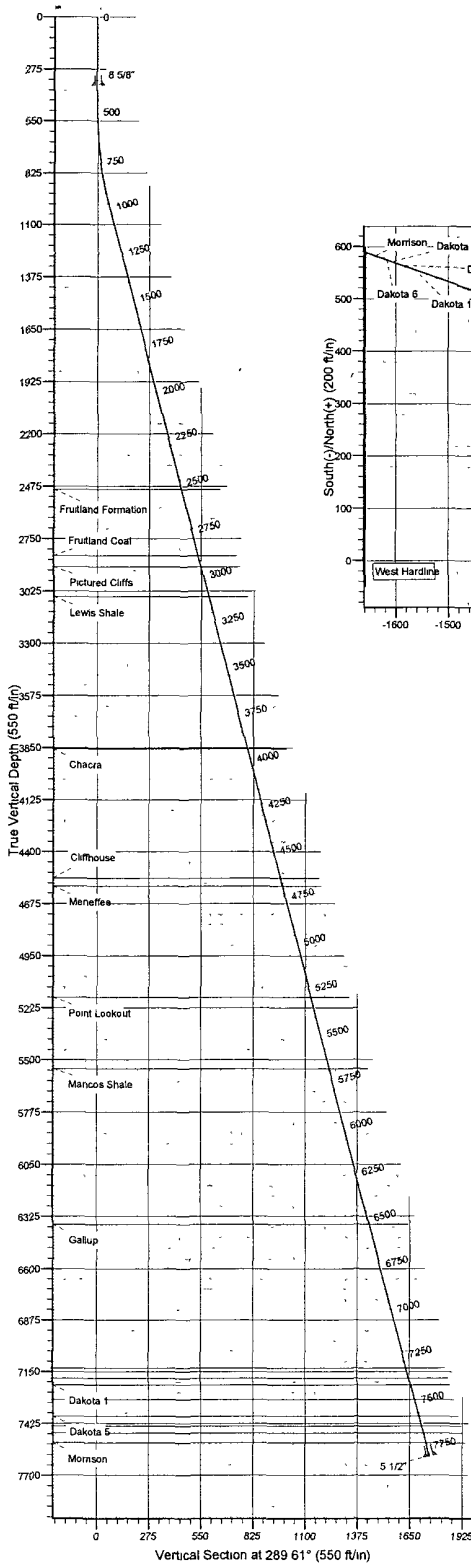
**Local Co-ordinate Reference:** Well Schwerdtfeger A #6G  
**TVD Reference:** Rig KB @ 6769.0ft (AWS #545)  
**MD Reference:** Rig KB @ 6769.0ft (AWS #545)  
**North Reference:** True  
**Survey Calculation Method:** Minimum Curvature

Formations					
Measured Depth (ft)	Vertical Depth (ft)	Name	Lithology	Dip (°)	Dip Direction (°)
2,547.1	2,493.0	Fruitland Formation		0.00	
2,905.3	2,840.0	Fruitland Coal	Coal	0.00	
2,965.2	2,898.0	Pictured Cliffs	Sandstone	0.00	
3,128.3	3,056.0	Lewis Shale	Shale	0.00	
3,955.2	3,857.0	Chacra	Sandstone	0.00	
4,660.2	4,540.0	Cliffhouse	Sandstone	0.00	
4,704.6	4,583.0	Meneffee		0.00	
5,310.6	5,170.0	Point Lookout		0.00	
5,699.8	5,547.0	Mancos Shale		0.00	
6,546.3	6,367.0	Gallup	Sandstone	0.00	
7,337.0	7,133.0	Greenhorn		0.00	
7,392.8	7,187.0	Graneros		0.00	
7,428.9	7,222.0	Dakota 1	Sandstone	0.00	
7,507.3	7,298.0	Dakota 3	Sandstone	0.00	
7,600.2	7,388.0	Dakota 5	Sandstone	0.00	
7,652.9	7,439.0	Dakota 6	Sandstone	0.00	
7,691.1	7,476.0	Burro Canyon		0.00	
7,744.8	7,528.0	Morrison		0.00	

# WELL DETAILS: Schwerdtfeger A #6G

Ground Level: 6757.0  
1410.0 FSL  
2325.0 FWL

Project: San Juan Basin (NAD 83)  
Site: Schwerdtfeger A #6G  
Well: Schwerdtfeger A #6G  
Wellbore: Schwerdtfeger A #6G  
Permitted Wellbore



## FORMATION TOP DETAILS

TVDPATH	MDPATH	FORMATION
2493.0	2547.1	Frutland Formation
2840.0	2905.3	Frutland Coal
2898.0	2965.2	Pictured Cliffs
3056.0	3128.3	Lewis Shale
3857.0	3955.2	Chacra
4540.0	4860.2	Cliffhouse
4583.0	4704.6	Meneffee
5170.0	5310.6	Point Lookout
5547.0	5699.8	Mancos Shale
6367.0	6546.3	Gallup
7133.0	7337.0	Greenhorn
7187.0	7392.8	Graneros
7222.0	7428.9	Dakota 1
7298.0	7507.3	Dakota 3
7388.0	7600.2	Dakota 5
7439.0	7652.9	Dakota 6
7476.0	7691.1	Burro Canyon
7528.0	7744.8	Morrison

## PROJECT DETAILS San Juan Basin (NAD 83)

Geodetic System: US State Plane 1983  
Datum: North American Datum 1983  
Ellipsoid: GRS 1980  
Zone: New Mexico Western Zone

System Datum: Mean Sea Level

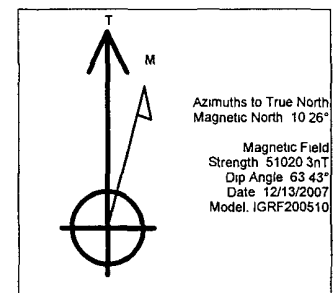
## CASING DETAILS

TVDPATH	MDPATH	NAME	SIZE
360.0	360.0	8 5/8"	8 5/8"
7596.0	7815.0	5 1/2"	5 1/2"

## SECTION DETAILS

Sec	MD	Inc	Azi	TVDPATH	+N/-S	+E/-W	DLeg	TFace	VSec	Target
1	0.0	0.00	0.00	0.0	0.0	0.0	0.00	0.00	0.0	
2	500.0	0.00	0.00	500.0	0.0	0.0	0.00	0.00	0.0	
3	979.1	14.37	289.61	974.1	20.1	-56.3	3.00	289.61	59.8	
4	7819.1	14.37	289.61	7600.0	589.8	-1655.8	0.00	0.00	1757.7	Schwerdtfeger A #6G -- Requested BHL

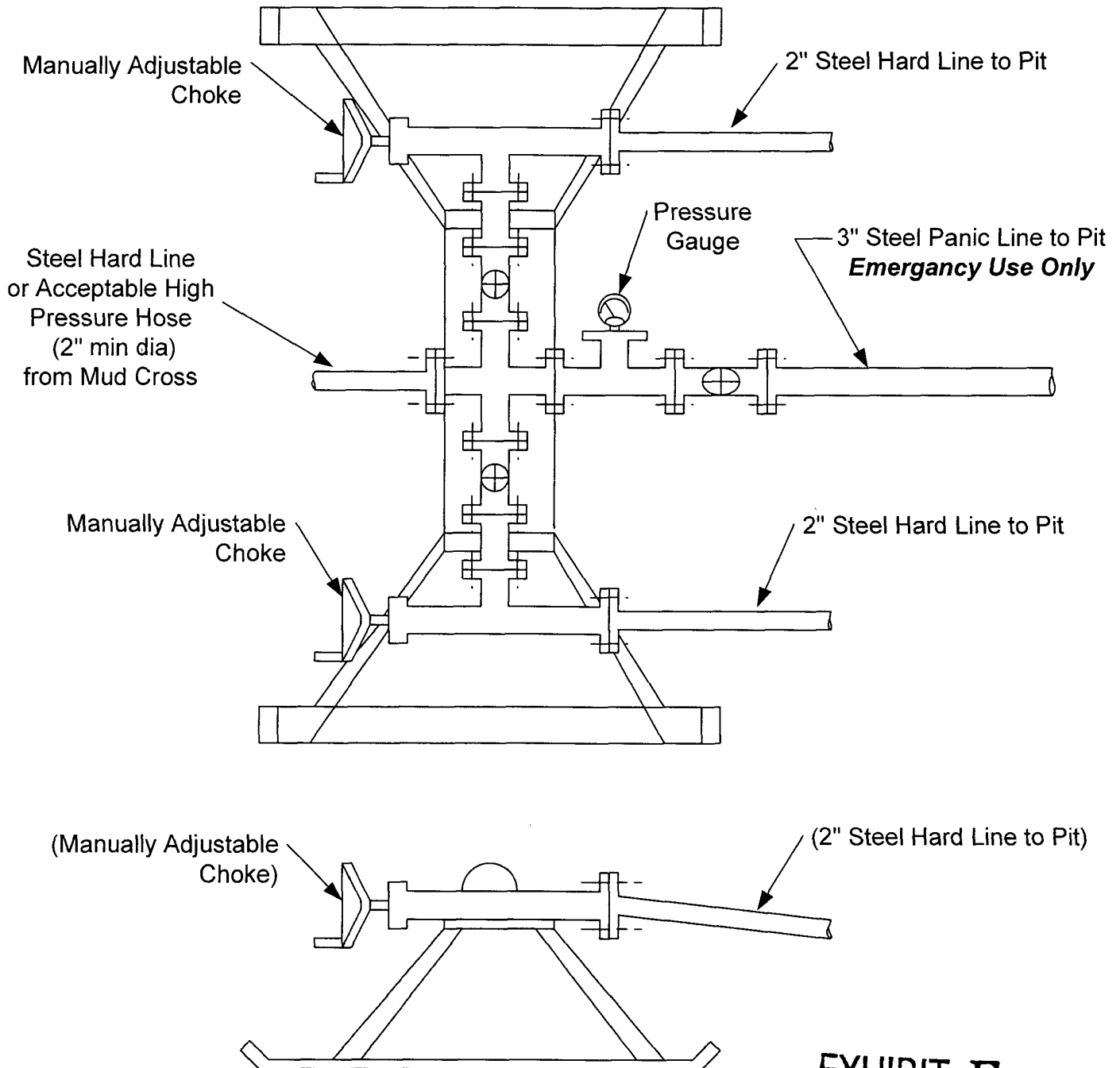
EXHIBIT F



# **CHOKE MANIFOLD SCHEMATIC FOR DRILLING OPERATIONS CLASS 1 (2M) NORMAL PRESSURE**

1. Stake all lines from choke manifold to pit.
2. Pressure test choke manifold after installation.
3. Pressure test manifold at the same time with the BOP Stack. Test manifold to the same test pressures.

## **TESTING PROCEDURE**



**EXHIBIT F**

# BOP SCHEMATIC FOR DRILLING OPERATIONS CLASS 1 (2M) NORMAL PRESSURE

## TESTING PROCEDURE

1. Test BOP after installation:  
Pressure test BOP to 200-300 psig (low pressure) for 10 min.  
  
Test BOP to Working Press or to 70% internal yield of surf csg (10 min) or which ever is less.
2. Test operation of (both) rams on every trip.
3. Check and record Accumulator pressure on every tour.
4. Re-pressure test BOP stack after changing out rams.
5. Have kelly cock valve with handle available.
6. Have safety valve and subs to fit all sizes of drill string on the rig floor and ready to go.

