

UNITED STATES  
DEPARTMENT OF THE INTERIOR  
GEOLOGICAL SURVEY

## APPLICATION FOR PERMIT TO DRILL, DEEPEN, OR PLUG BACK

## 1a. TYPE OF WORK

DRILL ☒DEEPEN ☐PLUG BACK ☐

## b. TYPE OF WELL

OIL  
WELL ☒GAS  
WELL ☐

OTHER

SINGLE  
ZONE ☒MULTIPLE  
ZONE ☐

## 2. NAME OF OPERATOR

Tenneco Oil Company

## 3. ADDRESS OF OPERATOR

Suite 1200 Lincoln Tower Building, Denver, Colo. 80203

## 4. LOCATION OF WELL (Report location clearly and in accordance with any State requirements.\*)

At surface

550 FNL &amp; 2370 FWL (NE/4 NW/4)

At proposed prod. zone

## 14. DISTANCE IN MILES AND DIRECTION FROM NEAREST TOWN OR POST OFFICE\*

## 15. DISTANCE FROM PROPOSED\*

LOCATION TO NEAREST  
PROPERTY OR LEASE LINE, FT.  
(Also to nearest drlg. unit line, if any)18. DISTANCE FROM PROPOSED LOCATION\*  
TO NEAREST WELL, DRILLING, COMPLETED,  
OR APPLIED FOR, ON THIS LEASE, FT.

## 21. ELEVATIONS (Show whether DF, RT, GR, etc.)

7048 GR

## 16. NO. OF ACRES IN LEASE

344

## 19. PROPOSED DEPTH

1657

17. NO. OF ACRES ASSIGNED  
TO THIS WELL

40

## 20. ROTARY OR CABLE TOOLS

Rotary

## 22. APPROX. DATE WORK WILL START\*

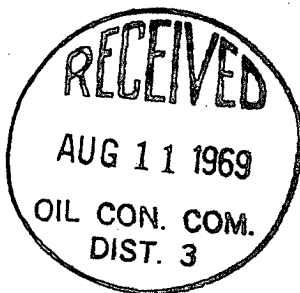
Upon Approval

## 23.

## PROPOSED CASING AND CEMENTING PROGRAM

SIZE OF HOLE	SIZE OF CASING	WEIGHT PER FOOT	SETTING DEPTH	QUANTITY OF CEMENT
13-3/4	10-3/4	32.75#	60	Sufficient to circulate
9-7/8	7	20#	1620	Sufficient to fill 500'
4-3/4	Open Hole		1657	

Above well will be a 1657' South Hospah Gallup Sand development well. Casing will be set above the Gallup, producing interval will be open hole completed and treated as necessary to establish commercial production.



RECEIVED

AUG 8 1969

U. S. GEOLOGICAL SURVEY  
FARMINGTON, N. M.

IN ABOVE SPACE DESCRIBE PROPOSED PROGRAM: If proposal is to deepen or plug back, give data on present productive zone and proposed new productive zone. If proposal is to drill or deepen directionally, give pertinent data on subsurface locations and measured and true vertical depths. Give blowout preventer program, if any.

## 24.

SIGNED

*Larry M. Rogers*

TITLE District Office Supervisor

DATE 8-6-69

(This space for Federal or State office use)

PERMIT NO.

APPROVAL DATE

APPROVED BY

*sq*

TITLE

DATE

CONDITIONS OF APPROVAL, IF ANY:

**NEW MEXICO OIL CONSERVATION COMMISSION  
WELL LOCATION AND ACERAGE DEDICATION PLAT**

All distances must be from the outer boundaries of the Section

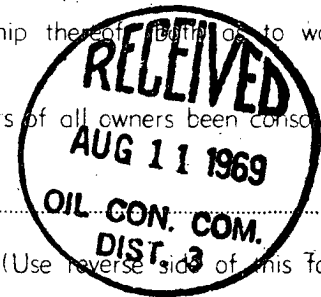
Operator <b>TENNECO OIL COMPANY</b>			Lease <b>HOSP AH</b>		Well No. <b>32</b>
Unit Letter <b>C</b>	Section <b>12</b>	Township <b>17 North</b>	Range <b>9 West</b>	County <b>McKinley</b>	
Actual Footage Location of Well: <div style="display: flex; justify-content: space-between;"> <span><b>550</b> feet from the <b>North</b> line and</span> <span><b>2370</b> feet from the <b>West</b> line</span> </div>					
Ground Level Elev. <b>7048' ungraded</b>		Producing Formation <b>Hospah Lower Sand</b>	Pool <b>Hospah, South (Lower Sand)</b>	Dedicated Acreage: <b>40</b> Acres	

1. Outline the acreage dedicated to the subject well by colored pencil or hachure marks on the plat below.
2. If more than one lease is dedicated to the well, outline each and identify the ownership thereof (both as to working interest and royalty).
3. If more than one lease of different ownership is dedicated to the well, have the interests of all owners been consolidated by communization, unitization, force-pooling, etc?

( ) Yes ( ) No If answer is "yes," type of consolidation \_\_\_\_\_

If answer is "no," list the owners and tract descriptions which have actually consolidated. (Use reverse side of this form if necessary.) \_\_\_\_\_

No allowable will be assigned to the well until all interests have been consolidated (by communization, unitization, forced-pooling, or otherwise) or until a non standard unit, eliminating such interests, has been approved by the Commission.



**CERTIFICATION**

I hereby certify that the information contained herein is true and complete to the best of my knowledge and belief.

Name Larry M. Riggs

Position District Office Supervisor

Company Tenneco Oil Company

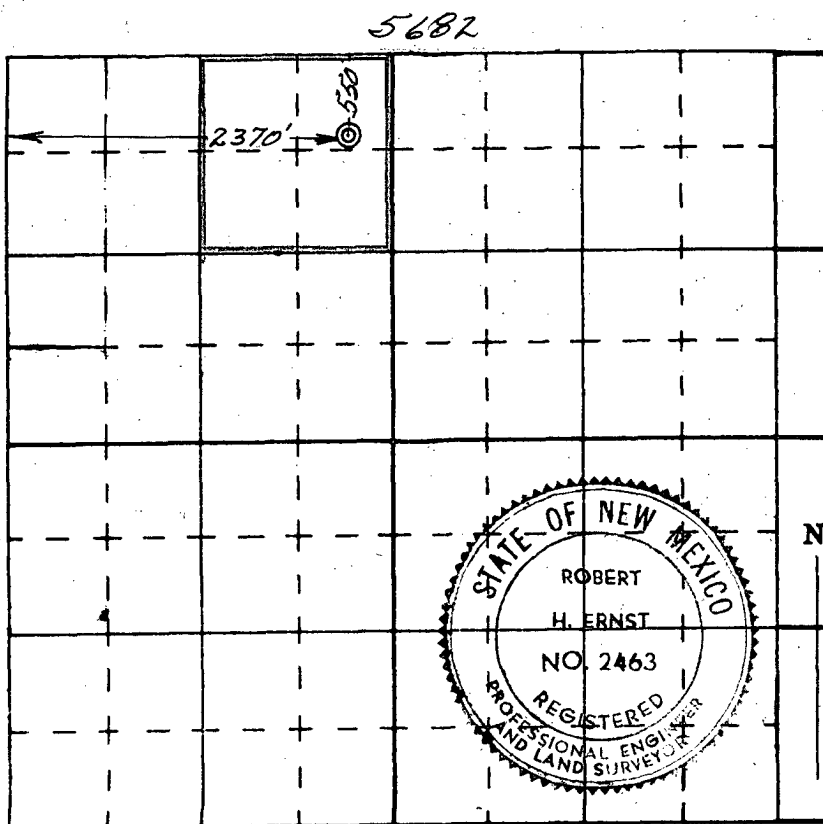
Date 8-6-69

I hereby certify that the well location shown on this plat was plotted from field notes of actual surveys made by me or under my supervision, and that the same is true and correct to the best of my knowledge and belief.

Date Surveyed 31 July 1969

Robert H. Ernst  
Registered Professional Engineer  
and/or Land Surveyor  
**Robert H. Ernst**  
**New Mexico PE & LS 2463**

Certificate No. \_\_\_\_\_



**Ernst Engineering Co.**  
**Durango, Colorado**