

**L. L. MCCONNELL NO. 14A**  
**PROCEDURE FOR REMEDIAL CEMENT**

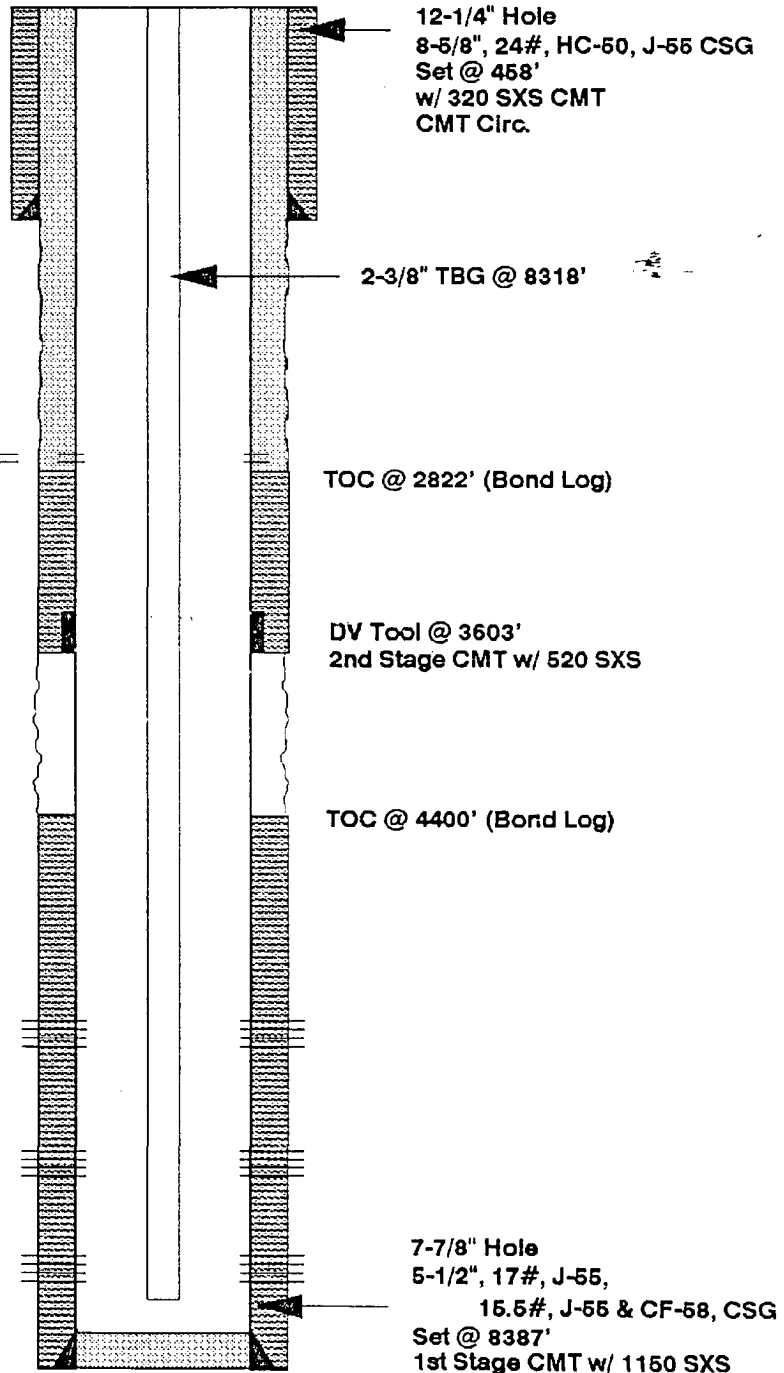
1. Insure necessary BLM sundry permit to cement are received and approved. Notify Mr. Albert Naquin of the Rio Puerco District BLM office 48 hours prior to commencing work. Contact L. N. Schlotterback to coordinate notifications.
2. RUPU. NDWH. NUBOP's. TOOH with 7/8" and 3/4" rods and 2 3/8" tubing from 8318'.
3. Rig up wireline and set a 5 1/2" CIBP at 3500' via wireline.
4. Perforate 4 squeeze holes, 90° phasing at 2800' using 3 1/8" HEG guns. TOOH and rig down wireline.
5. Establish rate to circulate down casing into perfs at 2800' and out bradenhead using fresh 2% Kcl water.
6. TIIH with workstring and 5 1/2" retainer to 2750' and set retainer.
7. Establish rate and pressure to circulate out the 8 5/8" - 5 1/2" casing annulus using water.
8. Squeeze through perforations with 650 sacks of Class G cement containing 2% CaCl and .5% D-60 fluid loss additive.
9. Once cement circulation is established, shut bradenhead valve and squeeze and additional 10 bbls into perforations.
10. Sting out of retainer and reverse circulate to clear workstring. TOOH with workstring. WOC.
11. Rig up reverse unit. TIIH with workstring, 4-6 drill collars and 3 1/8" bit and drill out cement retainer and cement.
12. Pressure test casing to 1000 psi.
13. TOOH with workstring and bit and lay down.
14. TIIH with production tubing and rods to 8318' and return to production.
15. Notify office/engineer of completion for sundry submittal.



# L. L. McCONNELL No. 14A Proposed Completion

LOCATION:  
790' FNL & 2310' FEL  
NW/NE, Sec. 29, T25N, R3W  
Rio Arriba County, NM  
SPUD DATE: 10/06/94

CMT to Surface  
thru  
SQZ Holes @ 2800'



GALLUP PERFS (1994)  
7240'-84' (176 Holes)  
Frac w/ 70,900# SND

U. DAKOTA PERFS (1994)  
8097'-8110' (72 Holes)  
Frac w/ 94,000 GALS.

L. DAKOTA PERFS (1994)  
8244'-70' (104 Holes)  
Frac w/ 69,000 GALS.

PBTD - 8373'  
TD - 8387'