

UNITED STATES
DEPARTMENT OF THE INTERIOR
BUREAU OF LAND MANAGEMENT

APPLICATION FOR PERMIT TO DRILL OR DEEPEN

1a. TYPE OF WORK

DRILL ☐DEEPEN ☐

96 FEB 14 AM 11:14

b. TYPE OF WELL

OIL
WELL ☐GAS
WELL ☐OTHER ☐SINGLE
ZONE ☐MULTIPLE
ZONE ☒

2. NAME OF OPERATOR

Conoco, Inc. 5073

(915) 686-6548

3. ADDRESS AND TELEPHONE NO.

10 Desta Dr. Ste 100W, Midland, TX 79705

4. LOCATION OF WELL (Report location clearly and in accordance with any State requirements.)

At surface

1605' FSL & 330' FEL

At proposed prod. zone 1605' FSL & 330' FEL

14. DISTANCE IN MILES AND DIRECTION FROM NEAREST TOWN OR POST OFFICE*

15. DISTANCE FROM PROPOSED*

LOCATION TO NEAREST
PROPERTY OR LEASE LINE, FT.
(Also to nearest drlg. unit line, if any)

16. NO. OF ACRES IN LEASE

17. NO. OF ACRES ASSIGNED
TO THIS WELL

E/2 - 320

18. DISTANCE FROM PROPOSED LOCATION*
TO NEAREST WELL, DRILLING, COMPLETED,
OR APPLIED FOR, ON THIS LEASE, FT.

19. PROPOSED DEPTH

20. ROTARY OR CABLE TOOLS

Rotary

21. ELEVATIONS (Show whether DF, RT, GR, etc.)

6656'

This action is subject to technical and
procedural review pursuant to 43 CFR 3165.3
and appeal pursuant to 43 CFR 3165.4.

22. APPROX. DATE WORK WILL START*

4/1/96

23. PROPOSED CASING AND CEMENTING PROGRAM

SIZE OF HOLE	GRADE SIZE OF CASING	WEIGHT PER FOOT	SETTING DEPTH	QUANTITY OF CEMENT
12-1/4"	9-5/8"	36#	250'	150 SXS
8-3/4"	7"	23#	3644'	575 SXS
6-1/4"	4-1/2"	11.6#	8128'	435 SXS

It is proposed to drill a vertical wellbore to be downhole commingled in the Blanco Mesaverde and Basin Dakota Pools following the acquisition of sufficient production test data for allocation purposes. Downhole commingling has already been approved by the BLM and by the state (Order R-10476). The well will be drilled and equipped according to the following attachments:

1. Well Location & Acreage Dedication Plat (C-102).
2. Proposed Well Plan Outline.
3. Cementing and Mud Programs.
4. Blowout Preventer Hookup.
5. Surface Use Plan with EXHIBITS A.1, A.2, B.1, B.2, & C.
6. Pipeline specifications (EXHIBIT D).

DRILLING OPERATIONS AUTHORIZED ARE
SUBJECT TO COMPLIANCE WITH ATTACHED
"GENERAL REQUIREMENTS"

This application includes ROW's for the well pad, access road, and pipeline.

*** NOTE: Application for NSL has been filed with the OCD

Archeological surveys have been completed for well pad, access road (LAC REPORT 9458) and for the pipeline (LAC REPORT 9548) and clearances recommended. The BLM on-site inspection has also been completed.

IN ABOVE SPACE DESCRIBE PROPOSED PROGRAM: If proposal is to deepen, give data on present productive zone and proposed new productive zone. If proposal is to drill or deepen directionally, give pertinent data on subsurface locations and measured and true vertical depths. Give blowout preventer program, if any.

24.

SIGNED

TITLE

Sr. Conservation Coordinator

DATE

1/30/96

(This space for Federal or State office use)

PERMIT NO.

APPROVAL DATE

Application approval does not warrant or certify that the applicant holds legal or equitable title to those rights in the subject lease which would entitle the applicant to conduct operations thereon.

CONDITIONS OF APPROVAL

APPROVED BY

TITLE

OIL CON. DIV.

*See Instructions On Reverse Side

Title 18 U.S.C. Section 1001 makes it a crime for any person knowingly and willfully to make to any Federal agency of the United States any false, fictitious or fraudulent statements or representations as to any matter within its jurisdiction.

Hold C-104 For NSL

NMCCD

APPROVED
AS AMENDED
APR 10 1996
DISTRICT MANAGER

District I
PO Box 1980, Hobbs, NM 88241-1980
District II
PO Drawer DD, Artesia, NM 88211-0719
District III
1000 Rio Hrazas Rd., Aztec, NM 87410
District IV
PO Box 2088, Santa Fe, NM 87504-2088

State of New Mexico
Energy, Minerals & Natural Resources Department

OIL CONSERVATION DIVISION
PO Box 2088
Santa Fe, NM 87504-2088

Form C-102
Revised February 21, 1994
Instructions on back
Submit to Appropriate District Office
State Lease - 4 Copies
Fee Lease - 3 Copies

96 FEB -1 PM 1:52

☐ AMENDED REPORT

WELL LOCATION AND ACREAGE DEDICATION PLAT

1 API Number <u>30-039-25572</u>		1 Pool Code 72319/71599		1 Pool Name Blanco Mesaverde/Basin Dakota	
1 Property Code 016608		1 Property Name San Juan 28-7 Unit			1 Well Number 159M
1 OCRID No. 005073		1 Operator Name Conoco Inc.			1 Elevation 6656'

10 Surface Location

UL or lot no.	Section	Township	Range	Lot Ida	Feet from the	North/South line	Feet from the	East/West line	County
I	22	28 N	7 W		1605	South	330	East	R.A.

11 Bottom Hole Location If Different From Surface

UL or lot no.	Section	Township	Range	Lot Ida	Feet from the	North/South line	Feet from the	East/West line	County

12 Dedicated Acres 320	13 Joint or Infill	14 Consolidation Code	15 Order No.
---------------------------	--------------------	-----------------------	--------------

NO ALLOWABLE WILL BE ASSIGNED TO THIS COMPLETION UNTIL ALL INTERESTS HAVE BEEN CONSOLIDATED
OR A NON-STANDARD UNIT HAS BEEN APPROVED BY THE DIVISION

16	5280.60'	22	RECEIVED APR 12 1996 OIL CON. DIV. DIST. 3	330'	1605'	5280.00'	17 OPERATOR CERTIFICATION	
	I hereby certify that the information contained herein is true and complete to the best of my knowledge and belief							
	Signature <u>Jerry W. Hoover</u>							
	Printed Name Sr. Conservation Coordinator							
Date 1/30/96							18 SURVEYOR CERTIFICATION	
Date of Survey 12-13-95							I hereby certify that the well location shown on this plat was plotted from field notes of actual surveys made by me or under my supervision, and that the same is true and correct to the best of my belief.	
Signature and Seal of Professional Surveyor <u>NEALE C. EDWARDS</u>							Certificate Number 8857	

5283.96'

PROPOSED WELL PLAN OUTLINE

EST. GL = +6656'

EST. KB = +6669'

WELL NAME: **SJ 28-7 UNIT No. 159M**

LOCATION: **SEC 22, UNIT I, T-28N, R-7W, RIO ARRIBA CO., NM**

TVD IN 1000'	MD	FORMATION TOPS & TYPE	DRILLING PROBLEMS	TYPE OF FORMATION EVALUATION	HOLE SIZE	CASING SIZE DEPTH	FRAC GRAD	FORMATION PRESSURE GRADIENT	MUD WT TYPE	DAYS
0					12-1/4"	9-5/8" 36# K-55 ST&C @ 250'		NORMAL	8.4 - 8.8# SPUD MUD	1
			NO H2S PROBLEMS HAVE BEEN ENCOUNTERED IN THIS AREA		8-3/4"			8.4 - 9.4#	8.4 - 9.4# GEL/WATER	
1										
2										
		OIAM @ 2514' KRLD @ 2618'	POSSIBLE WATER FLOW							
3		FRLD @ 2962' PCCF @ 3344' LEWS @ 3414'	POSSIBLE GAS FLOW POSSIBLE LOST RETURNS		8-3/4"	7" 23# K-55 LTC @ 3644'(special drift)		8.4 - 9.4#		5
4				MUDLOG F/INT. CSG. PT.	6-1/4"				AIR/AIR MIST	
5		CLFH/MV @ 4989' MENF @ 5133'	PROBABLE LOST RETURNS IF FLUID IN HOLE							
		PTLK @ 5538'								
6		MNCS @ 6003'								
		GLLP @ 6813'								
7										
		GRHN @ 7519' GRRS DKOT @ 7579'	POSSIBLE WATERFLOW POSSIBLE OVERPRESSURE IN DEEP DAKOTA	CASED HOLE LOGS	6-1/4"	4-1/2" 11.6# K-55 LTC @ 8128'		BHP = 2500 psi BHT = 175 deg F	AIR/AIR MIST	10
8		T.D. @ 8128'								

RECEIVED
FEB 14 1996
BUREAU OF LAND MANAGEMENT
FARMINGTON DISTRICT OFFICE

DATE: FEBRUARY 1996

CONOCO, INC
SAN JUAN 28-7 #159M
1605' FSL - 530' FEL
SEC. 22, T28N-R7W
RIO ARriba COUNTY, NM

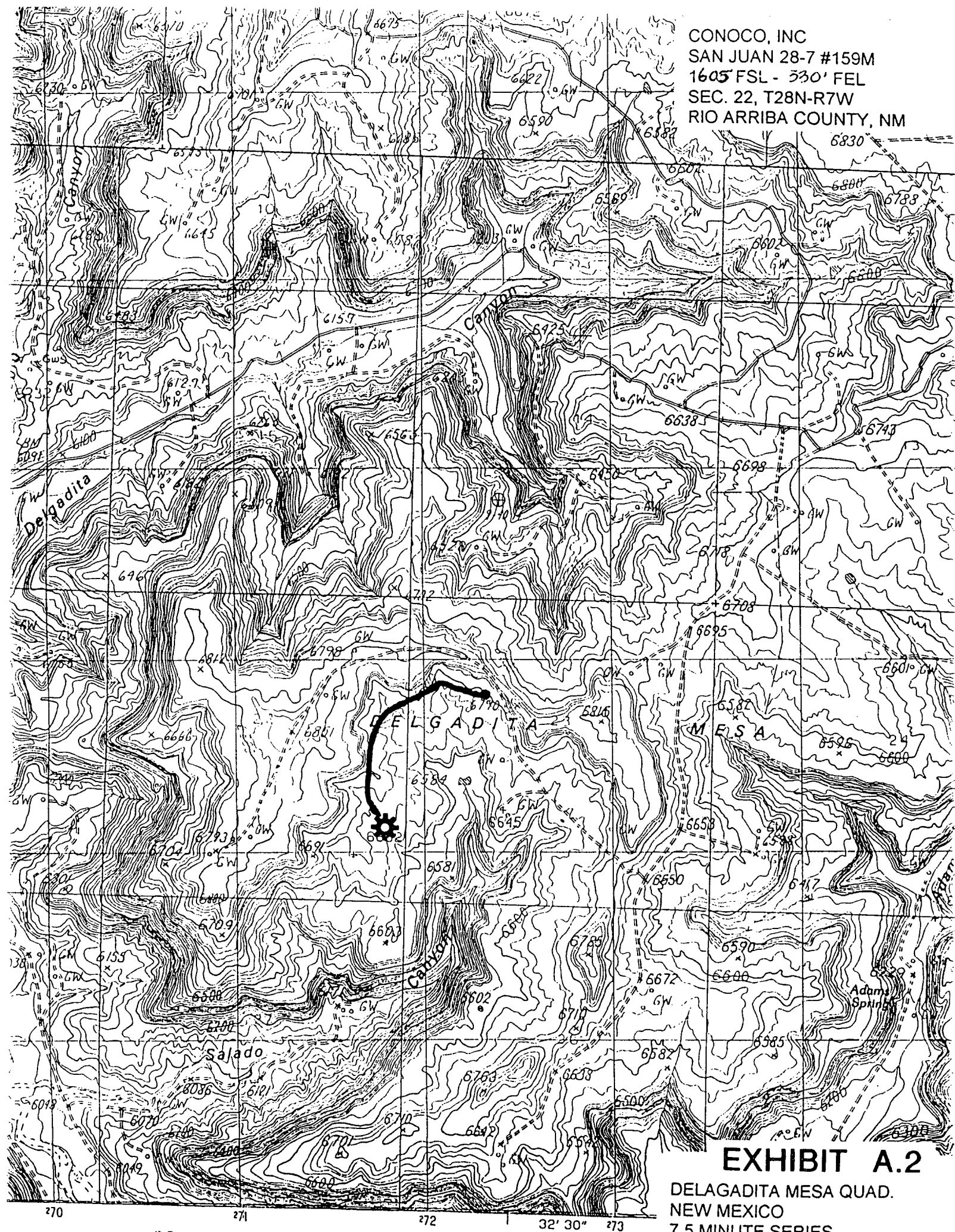


EXHIBIT A.2

DELAGADITA MESA QUAD.
NEW MEXICO
7.5 MINUTE SERIES

SCALE 1:24 000