

submitted in lieu of Form 3160-5

UNITED STATES  
DEPARTMENT OF THE INTERIOR  
BUREAU OF LAND MANAGEMENT

OIL CONSERVATION DIVISION  
RECEIVED

Sundry Notices and Reports on Wells

93 AUG 20 AM 9 25

1. Type of Well  
GAS

2. Name of Operator

**MERIDIAN OIL**

SOUTHLAND ROYALTY COMPANY

3. Address & Phone No. of Operator

PO Box 4289, Farmington, NM 87499 (505) 326-9700

4. Location of Well, Footage, Sec., T, R, M

810'FSL, 870'FEL Sec.15, T-28-N, R-13-W, NMPM

5. Lease Number  
NM-09979

6. If Indian, All. or  
Tribe Name

7. Unit Agreement Name

8. Well Name & Number  
Robinson #3

9. API Well No.

10. Field and Pool  
Basin Dakota

11. County and State  
San Juan Co, NM

12. CHECK APPROPRIATE BOX TO INDICATE NATURE OF NOTICE, REPORT, OTHER DATA

Type of Submission

Type of Action

☒ Notice of Intent

☒ Abandonment

☐ Change of Plans

☐ Subsequent Report

☐ Recompletion

☐ New Construction

☐ Final Abandonment

☐ Plugging Back

☐ Non-Routine Fracturing

☐ Casing Repair

☐ Water Shut off

☐ Altering Casing

☐ Conversion to Injection

☐ Other -

13. Describe Proposed or Completed Operations

It is intended to plug & abandon this well per the attached procedure and wellbore diagram.

RECEIVED  
AUG 17 1993  
OIL CON. DIV.  
DIST. 3

SEE ATTACHED FOR  
CONDITIONS OF APPROVAL

RECEIVED  
BLM  
93 JUL 20 PM 1:48  
070 FARMINGTON, NM

14. I hereby certify that the foregoing is true and correct.

Signed [Signature] (KAS) Title Regulatory Affairs Date 7/16/93

(This space for Federal or State Office use)

APPROVED BY \_\_\_\_\_ Title \_\_\_\_\_

CONDITION OF APPROVAL, if any:

APPROVED

Date Aug 16 1993

DISTRICT MANAGER

NMOCD

Robinson # 3D  
Recommend P&A Procedure  
Unit P Section 15 T28N R13W

- NOTE • 24 Hours before activity, notify BLM (326-6201) & NMOCD (327-5344).  
• Cement volumes are 100% excess outside pipe and across perforations & 50% excess inside pipe.

1. MOL and RU. Comply to all NMOCD, BLM and MOI rules & regulations. Hold safety meeting. ND wellhead. NU BOP. Blow well down, if necessary, kill with water.
2. TOOH w/ 6282' of 2-3/8" tbg. Visually inspect for and replace all bad jts. TIH w/ 4-1/2" 11.6# csg scraper and 3-3/4" bit and CO to 6230'. Load hole with water. TOOH.
3. TIH w/ 2-3/8" tubing & set 4-1/2" cmt ret @ 6220'. Plug # 1 from 6470' - 6170' w/ 36 sxs cmt (31 sxs below ret, 5 sxs on top of ret). Follow cmt with 24 bbls water. Pull tbg up 3 stands and reverse circ 2 tbg volumes.
4. Pump approx 17 bbls mud: 15# sodium bentonite w/ non fermenting polymer, 9# gal weight & 50 sec/qt vis or greater to fill hole from 6170' to 5445'. PU to 5445'. Plug # 2 from 5445' to 5345' w/ 10 sxs cmt. Follow w/ 21 bbls water. Pull tbg up 3 stands and reverse circ 2 tbg volumes. PU to 4500'. WOC.
5. RIH & tag Plug # 2. Pump approx 50 bbls mud: 15# sodium bentonite w/ non fermenting polymer, 9# gal weight & 50 sec/qt vis or greater to fill hole from 5345' to 3320'. TOOH. RU wireline and perf 4 sq holes @ 3320' (50' below the top of the Cliff House).
6. TIH w/ 5-1/2" cmt ret and set @ 3310'. Plug # 3 from 3320' - 3220' w/ 50 sxs cmt (40 sxs below ret, 10 sxs on top of ret). Follow cmt w/ 12 bbls water. Pull tbg up 3 stands and reverse circ 2 tbg volumes.
7. Pressure test csg to 500 psi. If pressure test fails use cmt ret for remaining plugs.
8. Pump approx 33 bbls mud: 15# sodium bentonite w/ non fermenting polymer, 9# gal weight & 50 sec/qt vis or greater to fill hole from 3220' to 1790'. TOOH.
9. RU wireline and perf 4 sq holes @ 1450'. Establish injection rate into perfs.
10. TIH to 1790' (50' below top of PC). Plug # 4 from 1790' - 1375' w/ 66 sxs cmt (46 sxs w/ pipe rams open followed by 20 sxs w/ pipe rams closed). Follow cmt with 7 bbls water. PU to 500' and reverse circ 2 tbg volumes.
11. WOC. RIH to 1375'. Tag Plug # 4. Pump approx 20 bbls mud: 15# sodium bentonite w/ non fermenting polymer, 9# gal weight & 50 sec/qt vis or greater to fill hole from 1375' to 530'.
12. TOOH w/ tbg. Perf 4 sq holes @ 530'. TIH w/ 5-1/2" cmt ret and set @ 320'. Open bradenhead and establish circulation. After circulation is established, Plug # 5 w/ 250 sxs (225 below retainer, and 25 sxs on top of retainer). Circulate cmt out bradenhead.
13. Cut off wellhead below surface casing flange, install dry hole marker and restore location according to Federal and State specifications.

Robinson # 3D  
Recommend P&A Procedure  
Unit P Section 15 T28N R13W  
Page 2

14. RD workover rig. MOL.

15. Contact pipeline company for removal of meter run and lines. Re-seed location.

Approve: \_\_\_\_\_  
J. B. Fraser

Concur: \_\_\_\_\_  
K. G. Johnson

VENDORS:

A-Plus Well Service: 325-2627

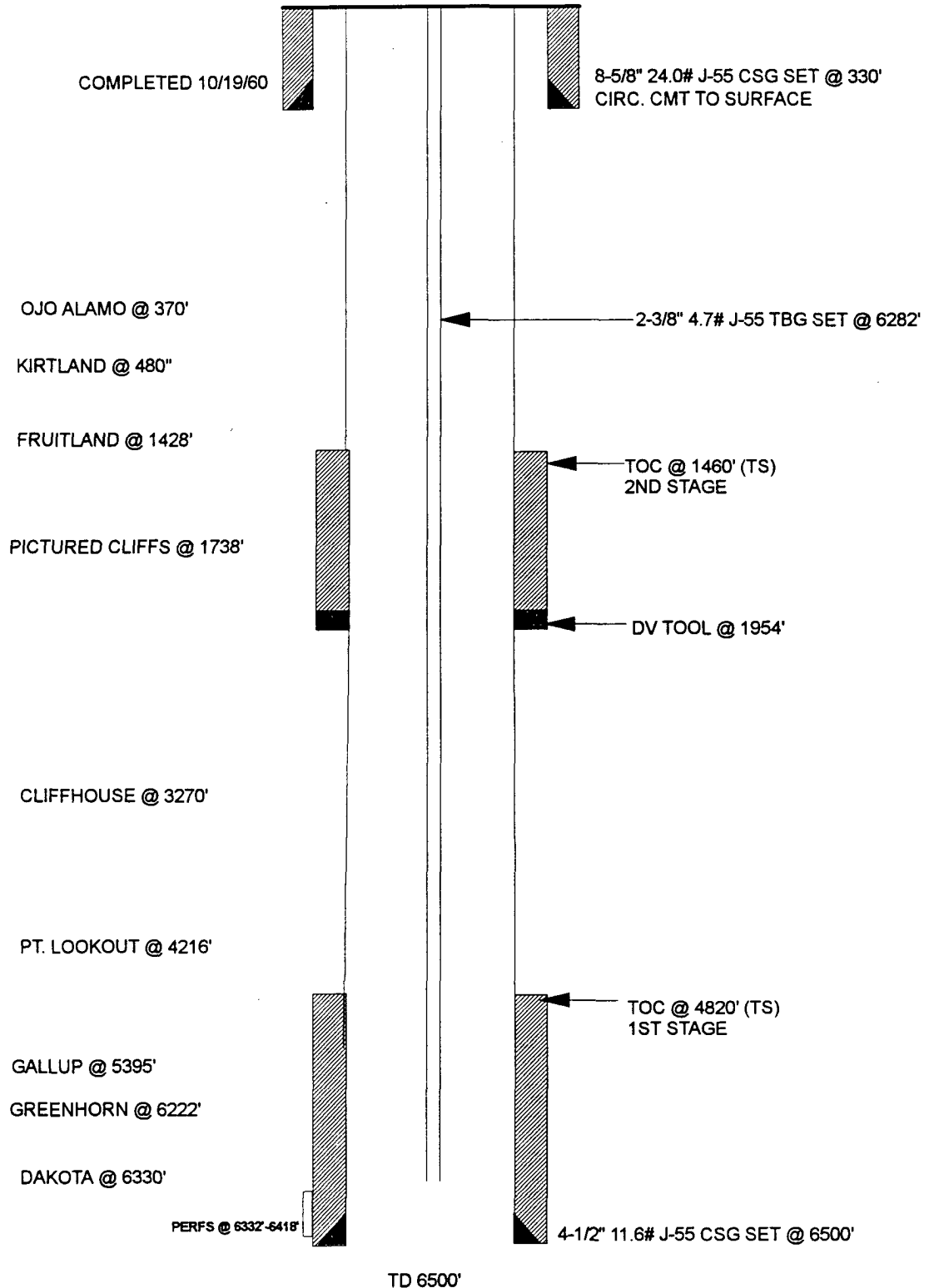
KAS:kas

# ROBINSON # 3D

CURRENT

BASIN DAKOTA

UNIT P, SEC 15, T28N, R13W, SAN JUAN COUNTY, NM



**ROBINSON # 3D**  
**PROPOSED**  
 BASIN DAKOTA  
 UNIT P, SEC 15, T28N, R13W, SAN JUAN COUNTY, NM

