

NEW MEXICO OIL CONSERVATION COMMISSION  
Santa Fe, New Mexico

Form C-101  
Revised (12/1/55)

MAIN OFFICE OCC

NOTICE OF INTENTION TO DRILL

Notice must be given to the District Office of the Oil Conservation Commission and approval obtained before drilling or recompletion begins. If changes in the proposed plan are considered advisable, a copy of this notice showing such changes will be returned to the sender. Submit this notice in **QUINTUPLICATE**. One copy will be returned following approval. See additional instructions in Rules and Regulations of the Commission. If State Land submit 6 Copies Attach Form C-128 in triplicate to first 3 copies of form C-101

Durango, Colorado

(Place)

March 10, 1961

(Date)

OIL CONSERVATION COMMISSION  
SANTA FE, NEW MEXICO

Gentlemen:

You are hereby notified that it is our intention to commence the Drilling of a well to be known as

Tennessee Gas Transmission Company

(Company or Operator)

Allen Dakota Gas Unit "A"

(Lease)

Well No. 1, in D The well is

(Unit)

located 790 feet from the North line and 790 feet from the

West

Line of Section 1, T. 29 N., R. 12 W., NMPM.

(GIVE LOCATION FROM SECTION LINE) Basin Dakota Pool, San Juan County

If State Land the Oil and Gas Lease is No.

If patented land the owner is Harold Allen

Address Bethesda, Maryland

We propose to drill well with drilling equipment as follows: Rotary tools  
from surface to total depth

The status of plugging bond is blanket

Drilling Contractor Great Western

We intend to complete this well in the Dakota formation at an approximate depth of 6700 feet.

CASING PROGRAM

We propose to use the following strings of Casing and to cement them as indicated:

Size of Hole	Size of Casing	Weight per Foot	New or Second Hand	Depth	Sacks Cement
12-1/4"	8-5/8"	24#	New	250'	120
7-7/8"	4-1/2"	9.5#	New	6700'	300

If changes in the above plans become advisable we will notify you immediately.

ADDITIONAL INFORMATION (If recompletion give full details of proposed plan of work.)

Production casing to be cemented in two stages. First stage to be cemented with 250 sacks 50-50 Pozmix. Stage collar to be set 50 feet below base of Pictured Cliff formation and cemented. Second stage cemented with 50 sacks 50-50 Pozmix.

Approved 3-13, 1961  
Except as follows:

Sincerely yours,

Tennessee Gas Transmission Company  
(Company or Operator)

By J. J. Lacey

Position District Production Engineer

Send Communications regarding well to

Name L. B. Plumb

Address P. O. Box 1714, Durango, Colorado

OIL CONSERVATION COMMISSION

By

NEW MEXICO OIL CONSERVATION COMMISSION  
WELL LOCATION AND ACREAGE DEDICATION PLAT

FORM C-128  
Revised 5/1/57

SEE INSTRUCTIONS FOR COMPLETING THIS FORM ON THE REVERSE SIDE

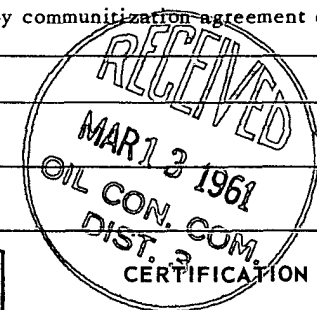
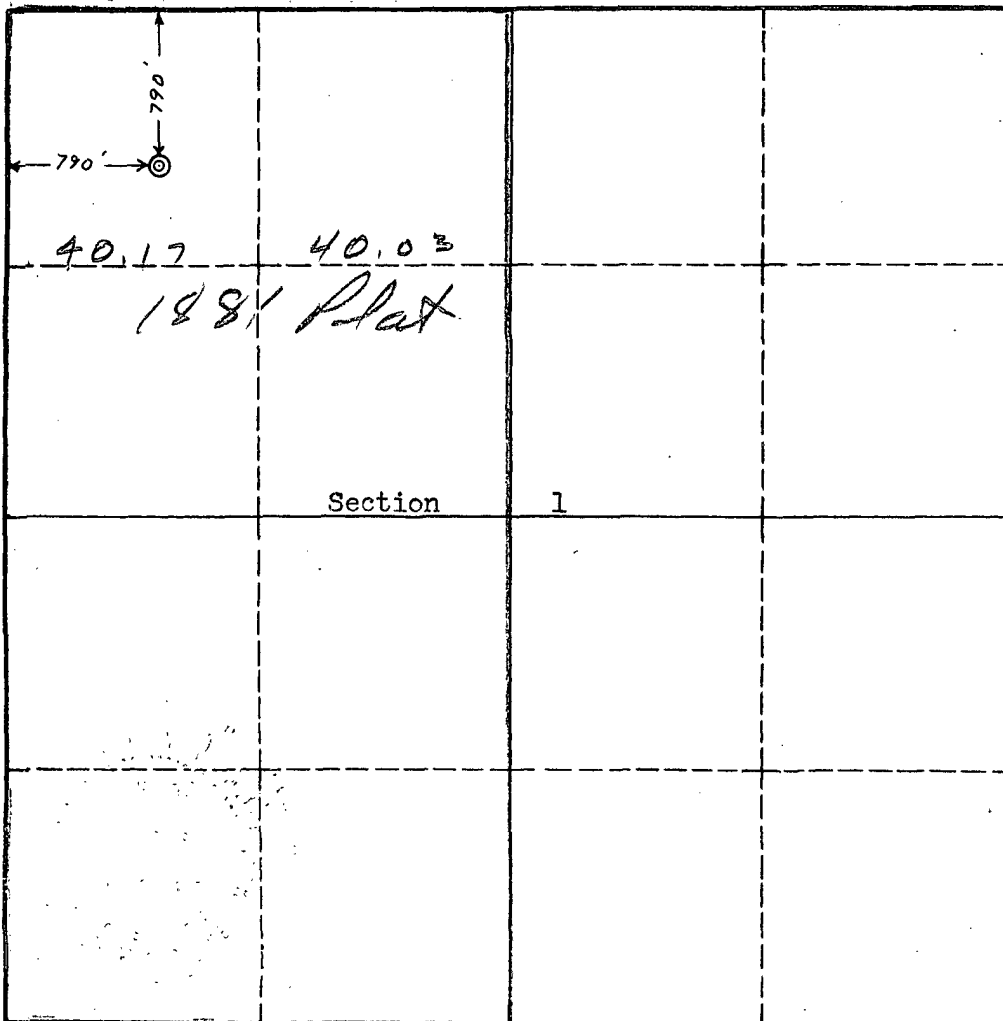
SECTION A

Operator <del>TENNESSEE GAS TRANSMISSION COMPANY</del>		Tennessee Gas Transmission Company		Lease Allen Dakota Gas Unit "A"	Well No. 1
Unit Letter	Section 1	Township 29 North	Range 12 West	County San Juan County	
Actual Footage Location of Well: 790 feet from the North line and 790 feet from the West line					
Ground Level Elev. 5905.5	Producing Formation Dakota		Pool Basin	Dedicated Acreage: 360.320.20 Acres	

1. Is the Operator the only owner in the dedicated acreage outlined on the plat below? YES X NO \_\_\_\_ . ("Owner" means the person who has the right to drill into and to produce from any pool and to appropriate the production either for himself or for himself and another. (65-3-29 (e) NMSA 1935 Comp.)
2. If the answer to question one is "no," have the interests of all the owners been consolidated by communization agreement or otherwise? YES \_\_\_\_ NO \_\_\_\_ . If answer is "yes," Type of Consolidation \_\_\_\_
3. If the answer to question two is "no," list all the owners and their respective interests below:

Owner	Land Description

SECTION B



I hereby certify that the information in SECTION A above is true and complete to the best of my knowledge and belief.

Name	J.J. Lacey
Position	District Petroleum Engineer
Company	Tennessee Gas Transmission
Date	March 10, 1961

I hereby certify that the well location shown on the plat in SECTION B was plotted from field notes of actual surveys made by me or under my supervision, and that the same is true and correct to the best of my knowledge and belief.

Date Surveyed	9 March 1961
Registered Professional Engineer and/or Land Surveyor	Robert K. Ernst
Certificate No.	PE & LS 2463

San Juan Engineering Co.