

Submit 3 Copies  
To Appropriate  
District Office  
**DISTRICT I**  
P.O. Box 1980, Hobbs, NM 88240

**DISTRICT II**  
811 South First, Artesia NM 88210

**DISTRICT III**  
1000 Rio Brazos Rd., Aztec, NM 87410

State of New Mexico  
Energy, Minerals and Natural Resources Department  
**OIL CONSERVATION DIVISION**  
2040 South Pacheco  
Santa Fe, NM 87505

Form C-103  
Revised 1-1-89

SUNDRY NOTICES AND REPORTS ON WELLS (DO NOT USE THIS FORM FOR PROPOSALS TO DRILL OR TO DEEPEN OR PLUG BACK TO A DIFFERENT RESERVOIR. USE "APPLICATION FOR PERMIT" (FORM C-101) FOR SUCH PROPOSALS)	
1. Type of Well: Oil Well <input type="checkbox"/> Gas Well <input checked="" type="checkbox"/> Other	7. Lease Name or Unit Agreement Name: NEW MEXICO 32-11 COM
2. Name of Operator WILLIAMS PRODUCTION COMPANY	8. Well No. #1B
3. Address of Operator P O BOX 3102, MS 25-4, TULSA, OK 74101	9. Pool name or Wildcat BLANCO MV
4. Well Location (Surface) Unit letter <u>J</u> : <u>1820</u> feet from the <u>SOUTH</u> line & <u>2380</u> feet from the <u>EAST</u> line Sec 20-32N-R11W SAN JUAN, NM	
10. Elevation (Show whether DF, RKB, RT, GR, etc. 6628' GR	

Check Appropriate Box to Indicate Nature of Notice, Report or Other Data

**NOTICE OF INTENTION TO:**

**SUBSEQUENT REPORT OF:**

PERFORM REMEDIAL  
WORK

PLUG AND ABANDON

REMEDIAL WORK

ALTERING CASING

TEMPORARILY ABANDON

CHANGE PLANS

COMMENCE DRILLING OPNS.

PLUG AND  
ABANDONMENT

PULL OR ALTER CASING

CASING TEST AND CEMENT JOB

OTHER:

X OTHER: C/O & COMMINGLE

12. Describe proposed or completed operations. (Clearly state all pertinent details, and give pertinent dates, including estimated date of starting any proposed work). Data below to satisfy NM OCD Rule 303.C.3 (b) (i)-(vii)

02-14-2008

Unable to move rig & equip due to weather conditions. Will move rig & equip Friday 2/15/08.

RCVD APR 14 '08

OIL CONS. DIV.

02-15-2008

Unable to move rig & equip due to weather conditions, heavy snow & muddy roads. SD until Monday 2/18/08.

DIST. 3

02-18-2008

Loaded out w/ R&E @ the Rosa #234, travel to the entrance to lease in the Glades, road too muddy to move rig & equip any further, SD and prepare to move in the morning on the freeze.

Please see attached sheets:

I hereby certify that the information above is true and complete to the best of my knowledge and belief.

SIGNATURE

*Rachel Lipperd*

TITLE: Engineering Technician

DATE: April 10, 2008

Type or print name Rachel Lipperd

Telephone No: (918) 573-3046

(This space for State use) APPROVED

BY

*Rachel Lipperd*

TITLE

Deputy Oil & Gas Inspector,  
District #3

DATE

APR 16 2008

Conditions of approval, if any:

4

02-19-2008

MIRU, NU w/ FB tank. Filled FT w/ 400 bbls 2% KCL. Braden head between 7" & 5 1/2" = 300#, csg = 300#, SS tbg = 280#, LS = 0#. Bled down & killed w/ 2% kcl. ND w/ xmas tree & NU w/ offset spool & BOP, function test same. Unland SS tbg & remove hanger. TDH, tag prod pkr @ 6010'. TOH w/ SS tbg, rec 186 sgls 2 1/16" tbg = 5923', tbg in good cond. ND w/ offset spool & changed pipe rams to center bore. Unlanded tbg & removed tbg hanger. MSFN, winterized pump & rig equip.

02-20-2008

LS tbg = 0#, csg = 320#, bled to FB tank. Work 2 1/16" LS tbg, pulled free @ 30,000#. TOH w/ LS tbg, meas & LD in sgls, rec 189 jts 2 1/16" tbg = 6010' plus 2' of the seal assembly. Seal assembly eaten by corrosion & parted below the second set of seals. Winterized pump & rig equip, MSFN. SD until Monday 2/25/08 due to muddy road conditions.

02-26-2008

SD until further notice due to muddy road conditions. The costs are stand by charges through today, Wednesday, 2/27/08.

02-29-2008

SD until further notice due to muddy road conditions.

03-03-2008

Load out & haul 2 1/16" long string & short string tbg to Tubascope yard. MI & off load 2 3/8" workstring tbg. RD until road dry up enough to blade & cover ruts.

03-06-2008

450 csg, bled to FB tank & kill w/ kcl. MU 2 jts 2 1/16" tbg & TIH w/ same on 2 3/8" WS tbg, meas & PU tbg in sgls. Tag @ 6010', packer set @ 6010', indicating seal bore assy stuck in packer. NU w/ air pack & PS. Broke circ w/ 10 bph air/soap/corrosion inhibitor no sand returns. Rotated & circ, solid set down. ND w/ PS & air pack. TOH w/ 2 3/8" WS tbg. Mule shoe indicated top of seal bore assy. MU 1.7" spear grapple w/ 1 jt 1 1/2" MT DP & TIH w/ same on 2 3/8" WS tbg. Tagged top of fish @ 6010'. Engaged fish & pulled 5000# over string wt, pulled free. TOH w/ fish assy, no fish. Spear was oval shaped w/ one side of grapple shucked half way down grapple w/ metal shavings in grapple. Top of fish appears to be lipped over on one side. Winterized pump & rig equip, MSFN & SD until Monday, 3/10/08.

03-10-2008

450# csg, bled to FB tank & kill w/ kcl. MU w/ 2 1/2" tapered mill, 2 1/4" DC, 2 7/8" jars & TIH w/ same on 2 3/8" WS tbg. Tag solid @ 6009'. NU w/ PS & air pack. Broke circ w/ 10 bph air/soap/corrosion inhibitor. Circ & rotate from 6009' to 6011', ranging from soft to hard milling, torque up, PU above packer top, unable to get back inside of packer w/ mill assy. ND w/ air pack & PS, TOH w/ tbg & mill assy, no junk on outside of mill. Mill indicated we were inside of packer 2' & bottom of mill pilot showed wear pattern. TIH w/ tbg & mill assy, hung off above all perfs. MSFN, ND, moved out w/ rig pump & pit. MI & spotted new Tri-Plex pump & pit.

03-11-2008

450# csg, bled to FB tank, kill w/ kcl. TDH w/ mill assy, tag up @ packer top. NU w/ PS & AP. Break circ w/ 10 bph air/soap/corrosion inhibitor. Work mill assy & got inside of packer. Rotate & circ, mill started cutting smoothly. Milled from 6011' to 6012', rec metal shavings & rubber seal rings. Dress top of fish & circ clean. ND w/ AP & PS, TOH w/ tbg & mill assy. Mill shoe indicated good smooth fish top looking up. MU 1.7" spear grapple, 1 jt 1 1/2" MT DP, 2 7/8" jars & TIH w/ same on 2 3/8" WS tbg.

03-12-2008

450 csg, bled to FB tank & kill w/ kcl. MU 1/7" spear grapple, 1 jt 1 1/2" MT DP & 2 7/8" jars. TIH w/ spear assy, stop solid @ 6012' top of fish. NU w/ air pack & PS, break circ w/ 10 bph air/soap/corr inhibitor. Unable to work inside fish w/ spear to engage spear, junk on top of fish. Circ & made soap sweep, TOH w/ spear assy, MU w/ 2 1/2" tapered mill, 2 1/4" DC, 2 7/8" jars. TIH w/ mill assy on 2 3/8" tbg, tag solid @ 6012'. NU w/ air pack & PS, break circ w/ 10 bph air/soap/corr inhibitor. Rotated & circ from 6012' to 6012.2', torque up unable to get mill to cut. Recovered some nickel size metal cuttings. Made soap sweep, ND w/ air pack & PS, TOH w/ tbg & tapered mill assy, mill indicated running on junk. Winterized rig & equip, MSFN.

03-13-2008

Csg = 450#, bled to FB tank & kill w/ 2% kcl. MU 2 1/2" concave mill, 2 1/4" DC, 2 7/8" jars (mill assy). TIH w/ mill assy on 2 3/8" WS tbg. Tagged up @ 6010.5' = 1.5' above fish, junk on top of fish. NU w/ air pack & PS, broke circ w/ 12 bph air/soap/corrosion inhibitor. Circ & rotated from 6010.5' to 6013', made soap sweeps while milling washing cuttings clear of hole. Rec heavy metal pieces & metal shavings. ND w/ PS & AP, TOH w/ mill assy, mill indicated good top looking up. MU 2 1/2" tapered mill, 2 1/4" DC & 2 7/8" jars. TIH w/ tapered mill assy on 2 3/8" tbg, tagged fish top @ 6013'. NU w/ air pack & PS. Broke circ w/ 12 bph air/soap/corr inhibitor. Circ & rotated, milling & dressing fish top from 6013' to 6013.5'. Made soap sweeps, ND w/ air pack & PS. TOH w/ mill assy & tbg. Mill indicated good fishing neck looking up. Winterized pump & equip, MSFN.

03-14-2008

Csg = 450#, bled to FB tank & kill w/ kcl. MU w/ 1.7" spear grapple, 1jt 1 1/2" MT DP, 2 7/8" jars & TIH w/ same on WS tbg. Tag up @ 6013' = fish top. NU w/ PS & AP. Break circ w/ 12 bph air/soap/ corrosion inhibitor. Work grapple & engaged fish, work @ 6000# over string wt, jumped free. Press build up indicating piece of fish on spear. ND w/ AP & PS, TOH w/ fish assy & tbg no fish recovery. Spear indicated we had a hole of fish w/ bottom of grapple. TIH w/ spear assy on WS tbg. Engaged fish @ 6013', set grapple w/ 20,000#. Worked fish setting off jars @ 36,000#, fish started moving up hole. Worked up hole 30' & started pulling freely. TOH w/ tbg & spear assy, recovered remaining sealbore assy = 1' & 64 jts 2 1/16" LS tbg = 1968', LD in sgls. Sent LS & SS tbg, 2 1/16" x 3.25# x IJ tbg = 435 jts = 13,908' to Tubascope for inspection. MSFN, winterized equip & SDFW.

03-17-2008

450 # csg, bled to FB tank & killed w/ 2% kcl. MU w/ 2 jts 2 1/16" IJ tbg & TIH w/ same on 2 3/8" WS tbg. Strung thru pkr @ 6010', pkr bore clear. TUH & hung tbg off above all perfs @ 5350'. MSFN, winterized pump & rig equip. Unable to get BJ equip until Tuesday 3/18/08, will pump sand in the morning.

03-18-2008

Csg = 450#, bled to FB tank & kill w/ kcl. TDH w/ open ended tbg. Stung thru pkr @ 6010', hung tbg open end @ 6050'. MIRU BJ Serv, press test lines @ 4000#. Blender lines froze, thawed same. Pump ahead w/ 1 bbl kcl, pump 8000# 20/40 Brady sand @ 3 PPG @ 6.5 BPM @ 110#. Flushed w/ 26 bbls kcl, went on vacuum. RD BJ Serv, TOH w/ 2 3/8" WS tbg. MU w/ 2.68" spear grapple, 4 3/4" shoe, 3 3/4" jars, 4 x 3 1/2" DC's. TIH w/ Knight pkr plucker assy on 2 3/8" work string tbg. Hung off above all perfs @ 5350'. MSFN, winterized pump & rig equip.

03-19-2008

TDH w/ pkr plucker assy, tag pkr @ 6012'. Sgl out w/ drlg line to 4, line string up, installed line wt indicator. NU w/ PS & air pack. Broke circ w/ 12 bph air/soap/corrosion inhibitor. Engaged pkr w/ Knight pkr plucker. Milled over pkr from 6012' to 6016', pkr moving down hole, worked pkr setting off jars @ 70,000#, pkr started moving up hole pulling freely above 4800'. ND w/ air pack & PS, sgl out w/ drlg line to 2 line string up. TOH w/ tbg & plucker assy. Rec pkr mandrel & some junk. MSFN, winterized pump & rig equip.

03-20-2008

Csg = 450#, bled to FB tank, kill w/ kcl. TDH w/ rev circ junk basket assy. Tag junk @ 7367'. Sgl out w/ drlg line, NU w/ PS & air pack. Break circ w/ 12 bph air/soap/corr inhib. Circ & rotated loading junk basket from 7367' to 7397'. Started building press, Circ clean & made soap sweeps. ND w/ air pack & PS. Doubled up drlg line to 2 line string up. TOH w/ junk basket & tbg. Rec 1 large slip segment & several small pieces of pkr. Dressed junk basket. MU junk basket and TIH w/ same on 2 3/8" WS tbg. Hung off tools & tbg above all perfs @ 4800' & MSFN.

03-24-2008

450# csg, bled to FB tank, kill w/ kcl. TDH w/ rev circ junk basket, tagged sand fill @ 7394' = 3' fill settled back on fish top. Sgl out w/ drl line to 4 line string up. NU w/ PS & air pack. Break circ w/ 12 bph air/soap/corr inhib. Circ & rotated w/ reverse circ junk basket assy from 7394' to top of liner hanger @ 7514'. Circ clean & made soap sweeps. ND w/ PS & air pack. Double up w/ drl line to 2 line string up. TOH w/ 2 3/8" tbg & junk basket assy. LD w/ 4 x 3 1/2" DC's & rev circ junk basket assy. MU w/ 3" junk mill, 18 sgls 1 1/2" MT DP = 570'. TIH w/ same on 2 3/8" WS tbg. Hung off above all perfs @ 4800' & MSFN.

03-25-2008

450# csg, bled to FB tank, kill w/ kcl. TDH w/ tbg & break circ w/ air @ 7000', displace 25 bbls form wtr. TDH w/ tbg & mill assy. Tag top sand fill @ 7516' = 5' inside 3 1/2" liner. Sgl out w/ drlg line to 4 line string up. NU w/ PS & air pack. Broke circ w/ 10 bph air/soap/corr inhib in 75 min @ 750#. Circ & rotated, CO sand fill from 7516' to 7701', recovered heavy frac sand & black sand w/ some metal cuttings. Circ WB clean & made soap sweeps. TUH out of liner w/ PS, TU hole w/ tbg & mill assy, hung off @ 6800' & MSFN.

03-26-2008

Csg = 450#, bled to FB tank & kill w/ 2% kcl. TDH w/ 2 7/8" mill assy on 2 3/8" tbg. Tag sand fill @ 7701', no sand entry overnight. NU w/ PS & air pack, break circ w/ 10 bph air/soap/ corr inhibitor in 30 min @ 750#. Circ & rotated from 7701' to 7956'. Mill stopping & milling off hard after getting into the perforations, believe the perforations are distorted, recovering metal shavings w/ heavy frac sand & black sand. Circ WB clean & made soap sweeps. PBTD @ 6062' = 49' to bottom of perms & 106' to PBTD. TUH out of liner pulled w/ PS, TUH & hung off @ 6800', MSFN.

03-27-2008

450# csg, bled to FB tank & kill w/ kcl. TDH w/ junk mill & workstring tbg. Tag top of sand fill @ 7956'. NU w/ PS & air pack. Broke circ w/ 10 bph air/soap/corr inhib. Circ heavy frac & black sand from 7956' to PBTD @ 8049' (top liner 7511' & pbtd @ 8049'). Circ w/ air & made soap sweeps @ PBTD, recovered heavy frac & black sand w/ some shale. Circ clean & made soap sweeps. TUH out of liner, pulled w/ PS & hung off @ 6800', MSFN.

03-28-2008

Csg = 450#, bled to FB tank & kill w/ 2% kcl. TDH w/ junk mill assy. Tag @ 8049', no fill overnight. NU w/ air pack & broke circ w/ 10 bph air/soap/corrosion inhibitor in 35 min @ 750#. Displaced 5 bbls formation wtr. Circ w/ air recovering 1/4 cup sand in 5 gal bkt test = 6 min to fill @ start of CO. Rec 1 tbsp sand in 5 gal bkt test = 6 min to fill @ end of CO. Pumping 10 bph kcl & rec 10 bph total wtr during CO, well not making wtr. Circ clean & made soap sweeps. TUH out of liner w/ mill assy, pulled w/ PS. ND w/ air pack & PS. Doubled up w/ drl line to 2 line string up. TOH w/ 2 3/8" WS tbg w/ 1 1/2" MT DP & mill assy, LD tbg & DP down in sgls, MSFN.

03-31-2008

450# on csg, bled to FB tank & kill w/ kcl. MU w/ 2 3/8" perf pup jt, 1.81" F-nipple, 7 jts 2 3/8" CS hydrill & TIH w/ same on 2 3/8" x 8-eue new prod string tbg, PU in sgls, meas & rabbited same. Spaced out tbg & landed OA@ 7501'. ND w/ work platform & BOP. NU w/ xmas tree & air pack, pump ahead w/ 3 bbls wtr. Pump off check @ 500 psi. Circ w/ air & rec load wtr. ND w/ air pack, load out w/ rig tools & LD w/ rig mast & cleaned location. Prepare to move in the morning to the Maddox #1.

# NEW MEXICO 32-11 COM #1B BASIN DAKOTA

## Location:

1820' FSL and 2380' FEL  
NW/4 SE/4 Sec 20(J), T32N R11W  
San Juan, New Mexico  
Elevation: 6628' GR

API: 30-045-32024

Spud: 03/30/04

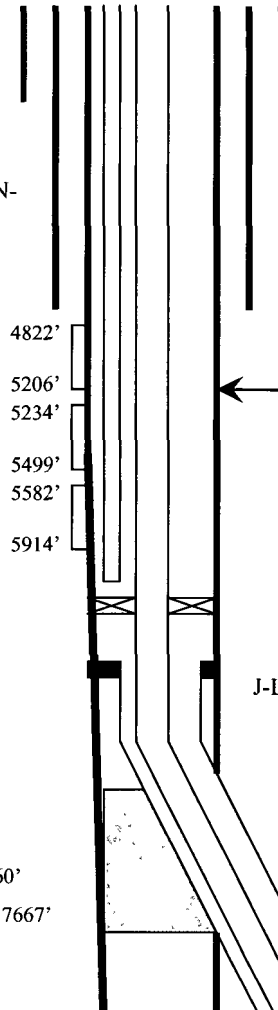
Completed: 04/30/04

Re-completed MV/DK: 9/2/2005

1st Delivery: 06/14/04

**7-5/8" Casing:** 66 jts, 26.4#, J-55, N-80 csg. Landed @ 2794'.

Top	Depth
Fruitland	2870
Pictured Cliffs	3290'
Cliff House	5058'
Menefee	5220'
Point Lookout	5600'
Mancos	5926'
Dakota	7788'



8 jts 10-3/4", 40.5#, J-55, ST&C csg.  
Landed @ 348'.

**MV tubing:** 186 jts 2-1/16", 3.25#, J-55 IJ tbhg with 6' orange peeled perforated sub on bottom and 1.25" ID SN @ 5917'. Landed tbhg @ 5923'.

Production packer model "D" packer @ 6010

**DK tubing:** 250 jts 2-1/16", 3.25#, J-55, IJ with 6' seal assembly set @ 6010.59', ran mule shoe on bottom, and 1.50" ID seating nipple @ 7959'. Landed tbhg @ 7978'. 189 jts including 6' tbhg pup above packer. 64 jts including 6' tbhg pup below packer.

J-LNR Hgr 3-1/2" x 5-1/2" w/ packoff @ 7526'

Top of Whipstock @ 7660'

Bottom of Whipstock @ 7667'

Perforated intervals 7792' - 8005' with 3 spf, 0.32" dia, 24.68" penetration w/ 120 deg phasing.

**5-1/2" Casing:** 186 jts, 17#, N-80 csg with 6-1/4" bit and X over on bottom. Set @ 7723'.

**Liner Casing:** 17 jts 3-1/2", 9.3#, FL4S, ran guide shoe, 9.7' shoe jt., float collar. Set @ 7526'-8024'.

## Stimulation:

Dakota; frac with 60,000 lbs 20/40 carbolite in 539 bbls 60Q foam

Point Lookout: frac with 9440 lbs liteprop 125 and 4240 lbs 20/40 brown in 98,406 gals slickwater

Menefee: frac with 10440 lbs liteprop 125 and 4240 lbs 20/40 brown in 76,696 gals slickwater

Cliff House; frac with 10660 lbs liteprop 125 and 4300 lbs 20/40 brown in 71,568 gals slickwater

## Sidetrack

Lost Hammer bit & retaining rings in hole when drilling 3-3/4" hole out of 5-1/2" casing. Set whipstock and sidetracked.

Hole Size	Casing	Cement	Volume
14-3/4"	10-3/4", 40.5#	280 sx	252.7 cu. ft.
9-7/8"	7-5/8", 26.4#	480 sx	937.6 cu. ft.
6-3/4"	5-1/2", 15.5#	270 sx	602 cu. Ft.
4-3/4"	3-1/2", 9.3#	50 sx	106 cu. ft.