

UNITED STATES  
DEPARTMENT OF THE INTERIOR  
BUREAU OF LAND MANAGEMENT

RECEIVED

FORM APPROVED  
OMB No 1004-0135  
Expires July 31, 1996

SUNDRY NOTICES AND REPORTS ON WELLS

APR 21 2008

Do not use this form for proposals to drill or reenter an abandoned well. Use Form 3160-3 (APD) for such proposals.

5. Lease Serial No.

NM-12233

6. If Indian, Allottee or Tribe Name

7. If Unit or CA/Agreement, Name and/or N

SUBMIT IN TRIPLICATE - Other instructions on reverse side

1.

☒ Oil Well ☐ Gas Well ☐ Other

2. Name of Operator

Elm Ridge Exploration Company, LLC

3a. Address

PO Box 156 Bloomfield, NM 87413

3b. Phone No. (include area code)

505-632-3476

4. Location of Well (Footage, Sec., T., R., M., or Survey Description)

Sec. 26-T24N-R8W

820' FNL X 1700' FEL

8. Well Name and No.

S. Blanco Federal 26-5

9. API Well No.

30-045-25218

10. Field and Pool, or Exploratory Area

Lybrook Gallup Ext.

11. County or Parish, State

San Juan County, NM

12. CHECK APPROPRIATE BOX(ES) TO INDICATE NATURE OF NOTICE, REPORT, OR OTHER DATA

TYPE OF SUBMISSION

TYPE OF ACTION

☒ Notice of Intent

☐ Subsequent Report

☐ Final Abandonment Notice

☐ Acidize

☐ Alter Casing

☐ Casing Repair

☐ Change Plans

☐ Convert to Injection

☐ Deepen

☐ Fracture Treat

☐ New Construction

☒ Plug and Abandon

☐ Plug Back

☐ Production (Start/Resume)

☐ Reclamation

☐ Recomplete

☐ Temporarily Abandon

☐ Water Disposal

☐ Water Shut-Off

☐ Well Integrity

☐ Other

13. Describe Proposed or Completed Operations (clearly state all pertinent details, including estimated starting date of any proposed work and approximate duration thereof. If the proposal is to deepen directionally or recomple horizontally, give subsurface locations and measured and true vertical depths of all pertinent markers and zones. Attach the Bond under which the work will be performed or provide the Bond No. on file with BLM/BIA. Required subsequent reports shall be filed within 30 days following completion of the involved operations. If the operation results in a multiple completion or recompleton in a new interval, a Form 3160-4 shall be filed once Testing has been completed. Final Abandonment Notices shall be filed only after all requirements, including reclamation, have been completed, and the operator has determined that the site is ready for final inspection.)

This well is incapable of production. Elm Ridge Exploration requests approval to plug and abandon this well according to the attached procedure.

RCVD APR 24 '08

OIL CONS. DIV.

DIST. 3

14. I hereby certify that the foregoing is true and correct

Name (Printed/Typed)

Amy Mackey

Title

Production Assistant

Signature

Date

April 16, 2008

THIS SPACE FOR FEDERAL OR STATE USE

Approved by

Original Signed: Stephen Mason

Title

Date

APR 23 2008

Conditions of approval, if any, are attached. Approval of this notice does not warrant or certify that the applicant holds legal or equitable title to those rights in the subject lease which would entitle the applicant to conduct operations thereon.

Office

Title 18 U.S.C. Section 1001, makes it a crime for any person knowingly and willfully to make to any department or agency of the United States any false, fictitious or fraudulent statements or representations as to any matter within its jurisdiction.

(Instructions on reverse)

NMOCD 8

### Plugging Program for South Blanco Federal 26-5:

- 1: Set 4-1/2" cement retainer at 5287'. Squeeze below retainer with 8 sacks to cover perfs. Spot 8 sacks on top of retainer to cover 50' over top of Gallup inside casing. PU and reverse circulate with 2 tubing volumes of water.
- 2: PU to 3482' Spot 12 sx balanced plug from <sup>2764' 2664'</sup>~~3482-3382~~' to cover top of Cliff House inside casing. PU and reverse circulate with 2 tubing volumes of water.
- 3: PU to 2390'. Spot 94 sx balanced plug from 2390' to 1201', to cover tops of Chacra (as required by NMOCD), Pictured Cliffs, Fruitland, and Ojo Alamo inside casing. PU and reverse circulate with 2 tubing volumes of water. TOOH.
- 4: PU to 342'. Pump 26 sx or sufficient volume to bring cement to surface inside casing.
- 5: Remediate location per conditions of approval.

# Elm Ridge Resources

## Pertinent Data Sheet

**Well Name:** South Blanco Federal 26 #5  
**Footage:** 820' FNL and 1700' FEL  
**Location:** Section 26, T24N, R8W  
**County:** San Juan County, NM  
**API#:** 30-045-25218

**Field:** Lybrook Gallup Ext.

**Elevation:** 6910' KB

**TD:** 5703' KB

**PBTD:** 5664' KB

**Completed:** 11/28/82

### **Casing Record:**

Hole Size	Casing Size	Wt.	Grade	Depth Set	Cement
12-1/4"	8-5/8"	24#	K-55	242'	200 sx (Circ. To Surface)
7-7/8"	4-1/2"	10.5#	K-55	5703'	Stg 1: 600 sx Stg 2: 450 sx (DV@3107') <sup>(1)</sup>

<sup>(1)</sup> 1<sup>st</sup> Stage: Cement to DV tool at 3107'. 2<sup>nd</sup> Stage: TOC: Circulated cement to surface

**Tubing Record:** None

**Rod Record:** None

### **Formation Tops:**

Nacimiento	Surface
Ojo Alamo	1251'
Kirtland-Fruitland	1368'
Pictured Cliffs	1937'
Lewis	1998'
Chacra	2340'
Cliff House	3432'
Menefee	3489'
Point Lookout	4170'
Mancos	4424'
Gallup	5287'

**Perforations:** Gallup: 5340-5563'

# Wellbore Diagram

South Blanco Federal 26-5  
NE/4 Sec. 26, T24N, R8W  
San Juan County Co., NM  
API #30-045-25218  
Before

Nacimiento-Surface

12-1/4" OH  
8-5/8" 24# K-55 set @ 242'  
Circulated cmt to surface

TOC: Circulated to surface

Ojo Alamo 1251'  
Kirtland-Fruitland 1368'

Pictured Cliffs 1937'  
Lewis 1998'

Chacra 2340'

4-1/2" DV Tool @ 3107'  
Cement to DV tool

Cliff House 3432'  
Menefee 3489'

Point Lookout 4170'

Mancos 4424'

Gallup 5287'

Gallup Perfs: 5340-5563'

PBTD: 5664'  
4-1/2" 10.5# K-55 Set @ 5703'  
TD: 5703'

S. Blanco Federal 26-5  
4/16/2008

# Wellbore Diagram

South Blanco Federal 26-5  
NE/4 Sec. 26, T24N, R8W  
San Juan County Co., NM  
API #30-045-25218  
After

Nacimiento-Surface

Ojo Alamo 1251'  
Kirtland-Fruitland 1368'

Pictured Cliffs 1937'  
Lewis 1998'

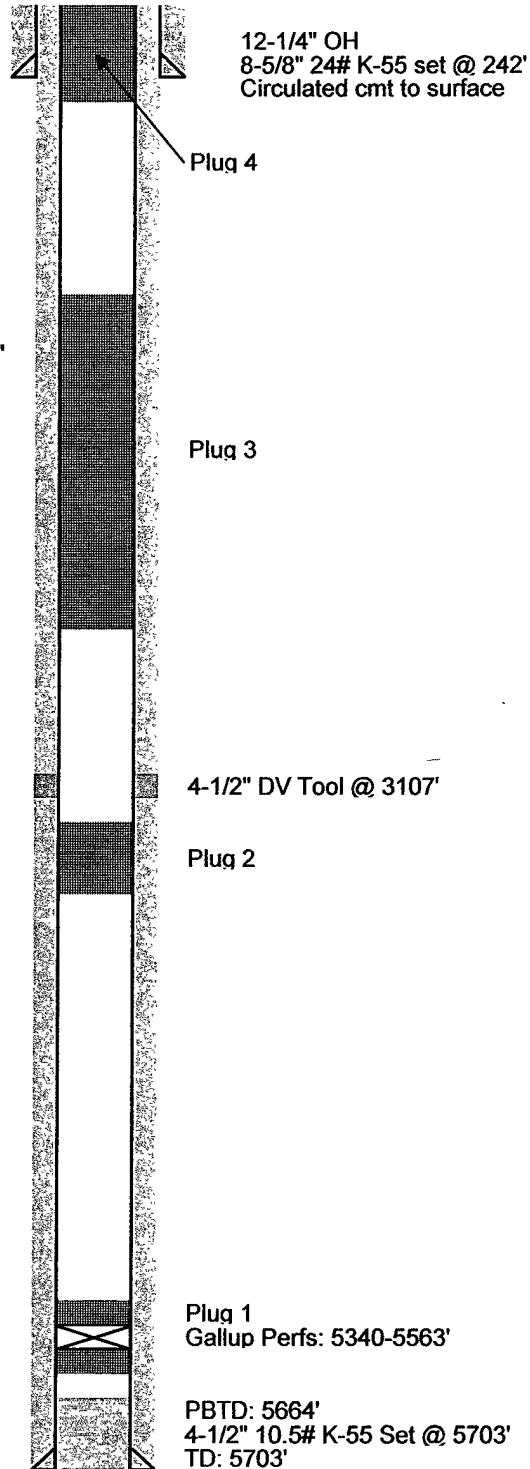
Chacra 2340'

Cliff House 3432'  
Menefee 3489'

Point Lookout 4170'

Mancos 4424'

Gallup 5287'



S. Blanco Federal 26-5  
4/16/2008

**UNITED STATES DEPARTMENT OF THE INTERIOR  
BUREAU OF LAND MANAGEMENT  
FARMINGTON DISTRICT OFFICE  
1235 LA PLATA HIGHWAY  
FARMINGTON, NEW MEXICO 87401**

Attachment to notice of  
Intention to Abandon:

Re: Permanent Abandonment  
Well: 5 South Blanco Federal 26

**CONDITIONS OF APPROVAL**

1. Plugging operations authorized are subject to the attached "General Requirements for Permanent Abandonment of Wells on Federal and Indian Lease."
2. Farmington Office is to be notified at least 24 hours before the plugging operations commence (505) 599-8907.
3. The following modifications to your plugging program are to be made:
  - a) Place the Mesaverde plug from 2764' – 2664'.

You are also required to place cement excesses per 4.2 and 4.4 of the attached General Requirements.

Office Hours: 7:45 a.m. to 4:30 p.m.