

RCVD JUN 9 '08

UNITED STATES
DEPARTMENT OF THE INTERIOR
BUREAU OF LAND MANAGEMENT

OIL CONS. DIV.

Sundry Notices and Reports on Wells

DIST. 3

1. Type of Well
GAS

2. Name of Operator

BURLINGTON

RESOURCES OIL & GAS COMPANY LP

3. Address & Phone No. of Operator

PO Box 4289, Farmington, NM 87499 (505) 326-9700

4. Location of Well, Footage, Sec., T, R, M
Sec., T--N, R--W, NMPM

Unit G (SWNE) 1820' FNL & 1580' FEL, Sec. 19, T32N, R14W NMPM

5. Lease Number
I-22-IND-2772

6. If Indian, All. or
Tribe Name

7. Unit Agreement Name

8. Well Name & Number

Ute Com 23

9. API Well No.

30-045-29548

10. Field and Pool

Barker Dome
~~WC Hermosa Group~~/Barker Dome
Desert Creek/Barker Dome Ismay

11. County and State
San Juan, NM

12. CHECK APPROPRIATE BOX TO INDICATE NATURE OF NOTICE, REPORT, OTHER DATA

Type of Submission

☒ Notice of Intent☐ Subsequent Report☐ Final Abandonment

Type of Action

☐ Abandonment☐ Recompletion☐ Plugging☐ Casing Repair☐ Altering Casing☐ Change of Plans☐ New Construction☐ Non-Routine Fracturing☐ Water Shut off☐ Conversion to Injection☒ Other Recomplete Lower Ismay, Upper Ismay, WC Hermosa

13. Describe Proposed or Completed Operations

Burlington Resources requests to recompleate the subject well in the following formations:

WC Hermosa

Lower Ismay

Upper Ismay

Please see attached procedure, wellbore diagram and plat.

RECEIVED

MAY 15 2008

Bureau of Land Management
Durango, Colorado

14. I hereby certify that the foregoing is true and correct.

Signed

*Tracey N. Monroe*Tracey N. Monroe Title Regulatory Technician Date 5/13/08

(This space for Federal or State Office use)

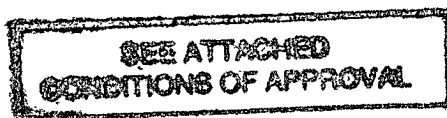
APPROVED BY

Title

Date

CONDITION OF APPROVAL, if any:

Title 18 U.S.C. Section 1001, makes it a crime for any person knowingly and willfully to make any department or agency of
the United States any false, fictitious or fraudulent statements or representations as to any matter within its jurisdiction



PIT, CLOSED LOOP SYSTEM, BELOW
GRADE TANK, PROPOSED
ALTERNATIVE METHOD OR CLOSURE
PLAN TO BE DESIGNED, CONSTRUCTED
& OPERATED PURSUANT TO NMOCD
RULE 19.15.17 EFFECTIVE 06/16/08

RECEIVED

Ute Com #23

Unit G, Section 19, Township 32N, Range 14W

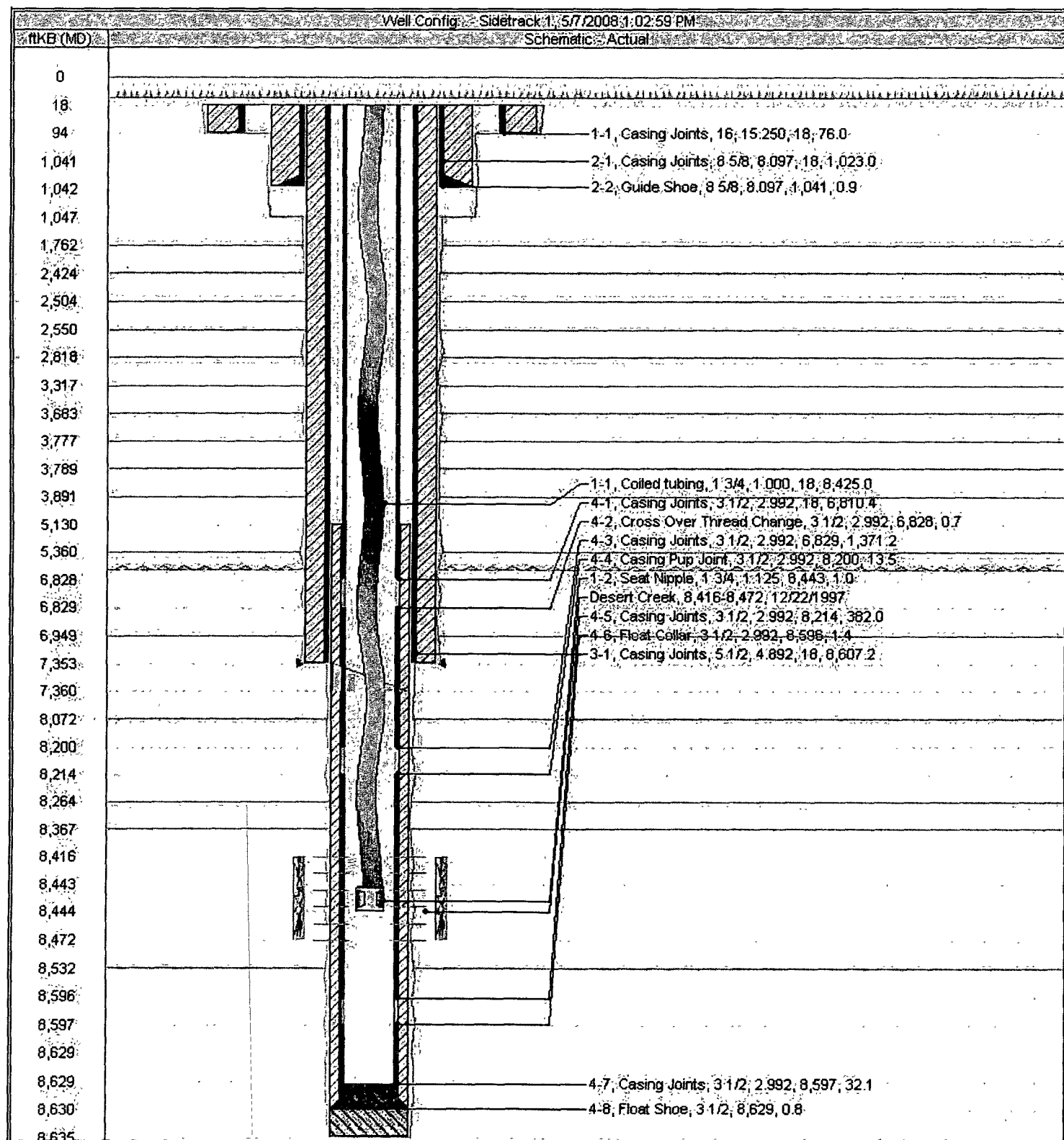
Lower Ismay, Upper Ismay and Hermosa Recomplete

5/7/2008

Procedure:

1. MIRU service rig TOOH with coil tubing.
2. Run GR/CCL/CBL log.
3. Re-acidize Desert Creek Formation with 14,000 gals of foamed 15% HCL.
4. Cleanup Desert Creek formation.
5. Flow test Desert Creek. Run in hole with Wireline set RBP.
6. Run in hole with perf gun and perforate the Lower Ismay.
7. Acidize Lower Ismay with 14,000 gals of foamed 15% HCL.
8. Cleanup Lower Ismay formation.
9. Flow test Lower Ismay. Run in hole with Wireline set RBP.
10. Run in hole with perf gun and perforate Upper Ismay.
11. Acidize Upper Ismay with 14,000 gals of foamed 15% HCL.
12. Cleanup Upper Ismay formation.
13. Flow test Upper Ismay. Run in hole with Wireline set RBP.
14. Run in hole with perf gun and perforate Hermosa.
15. Acidize Hermosa with 14,000 gals of foamed 15% HCL.
16. Cleanup Hermosa formation.
17. Flow test Hermosa. Run in hole with Wireline set RBP.
18. Shut-in well for a minimum of 7 days.
19. TIH and retrieve bridge plugs.
20. Run 2" flush joint production tubing.
21. Flow all zones to clean out, and recover any remaining load fluid, flow test.
22. Rig Down.

Ute Com #23 Current Wellbore



OIL CONSERVATION DIVISION
PO Box 2088
Santa Fe, NM 87504-2088

1000, NM 0234-1988
1000, NM 0234-1988
1000, NM 0234-1988
1000, NM 0234-1988
1000, NM 0234-1988
1000, NM 0234-1988

☐ AMENDED REI

WELL LOCATION AND ACREAGE DEDICATION PLAT

APN Number 30-045-29265	Field Code 71560/96354/97582	Field Name Barker Dome Desert Creek	Field Name Barker Dome Ismay
Property Code 17211	Property Name Ute Com.	Well Number 23	
OGUID No. 14538	Operator Name BURLINGTON RESOURCES OIL & GAS COMPANY LP	Direction 6259'	

Surface Location

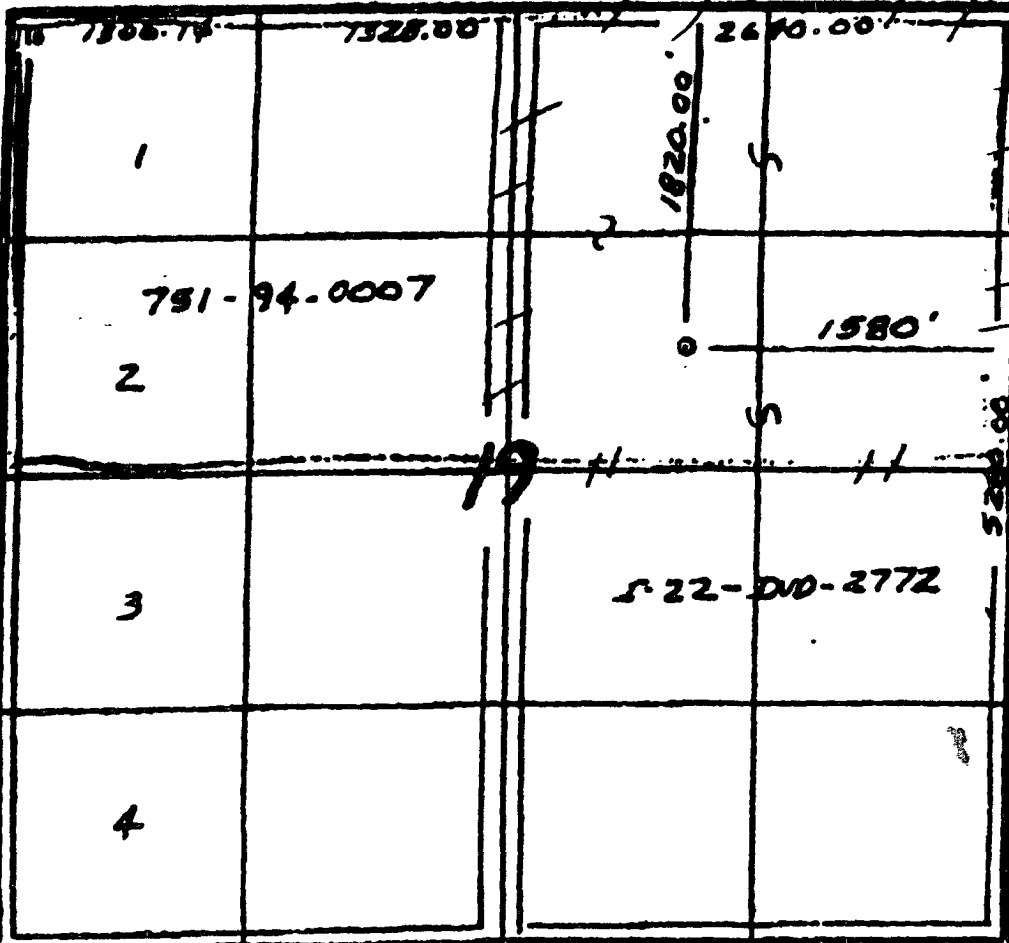
UT or lat. no.	Section	Township	Range	Lot No.	Feet from the	North/South line	Feet from the	East/West line	County
G	19	32N	14W		1820	North	1580	East	S.J.

Bottom Hole Location if Different From Surface

UT or lat. no.	Section	Township	Range	Lot No.	Feet from the	North/South line	Feet from the	East/West line	County

Wellhead Area: **3207160/160**
John or hole:
Consolidation Code:
Order No.:

NO ALLOWABLE WELL BE ASSIGNED TO THIS COMPLETION UNTIL ALL INTERESTS HAVE BEEN CONSOLIDATED
OR A NON-STANDARD UNIT HAS BEEN APPROVED BY THE DIVISION



OPERATOR CERTIFICATION

I hereby certify that the information contained herein is true and correct to the best of my knowledge and belief.

Signature: **Tracey N. Monroe**
Title: **Regulatory Technician**
Date: **May 13, 2008**

SURVEYOR CERTIFICATION

I hereby certify that the well location shown on this plat was placed from field notes of actual surveys made by me or under my supervision, and that the same is true and correct to the best of my belief.

Date of Survey: **11-4-94**
Signature: **HELEN C. EDWARDS**
Title: **Surveyor**
Date: **MAY 20 2008**

DD, Artesia, NM 88311-0719
101
Mile Dream Rd., Artesia, NM 87410
Level IV
PO Box 2088, Santa Fe, NM 87504-2088

OIL CONSERVATION DIVISION
PO Box 2088
Santa Fe, NM 87504-2088

☐ AMENDED REF

WELL LOCATION AND ACREAGE DEDICATION PLAT

API Number 30-045-29265	Pool Code 71560/96354/	Well Name Barker Creek Paradox/Barker/Dome Ismay/1932N14G
Property Code 17211	Property Name Ute Com.	Well Number 23
OCED No. 14538	Operator Name	Elevation 6259'

18 Surface Location

UL or lot no.	Section	Township	Range	Lot No.	Feet from the	North/South Line	Feet from the	East/West Line	County
G	19	32N	14W		1820	North	1580	East	S.J.

19 Bottom Hole Location If Different From Surface

UL or lot no.	Section	Township	Range	Lot No.	Feet from the	North/South Line	Feet from the	East/West Line	County

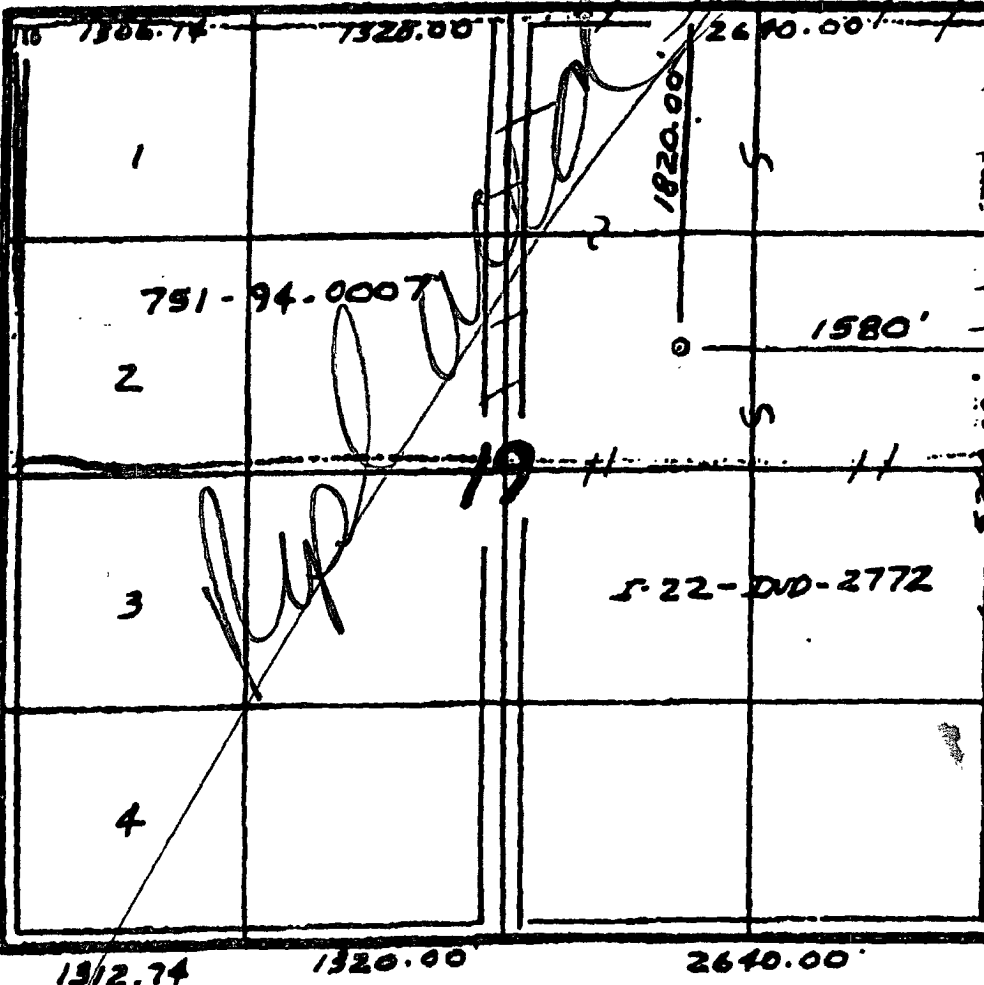
10 Dedicated Acres
3207160/160

11 John or Infill

12 Consolidation Code

13 Order No.

NO ALLOWABLE WILL BE ASSIGNED TO THIS COMPLETION UNTIL ALL INTERESTS HAVE BEEN CONSOLIDATED OR A NON-STANDARD UNIT HAS BEEN APPROVED BY THE DIVISION



17 OPERATOR CERTIFICATION

I hereby certify that the information contained herein is true and complete to the best of my knowledge and belief.

Tracey N. Monroe
Signature
Tracey N. Monroe
Regulatory Technician
Date
May 13, 2008

18 SURVEYOR CERTIFICATION

I hereby certify that the well location shown on this plat was plotted from field notes of actual surveys made by me or under my supervision, and that the same is true and correct to the best of my belief.

11-A-94
Date of Survey
Signature
HELEN C. EDWARDS
HELEN C. EDWARDS
6557
6557

Burlington Resources Oil & Gas Company
Tribal Lease: I-22-IND-2772
Well: Ute Mountain Ute #23
Location: 1820' FNL & 1580' FEL
Sec. 19, T. 32 N., R. 14 W.
San Juan County, New Mexico

3160

Conditions of Approval:

1. Approval of this sundry is based upon the understanding that **Only** the Ismay and the Honaker Trail formations will be opened to the wellbore. Any other formations opened to the wellbore will be considered a violation of the Orders of the Authorized Officer.
2. Shut-in bottom hole pressures for **All** zones and after frac flowrates for **All** zones must be reported to this office on the Sundry Notice, Subsequent Report submitted after the completion of this well. A spinner survey would be adequate. A Completion Report should be submitted within 30 days of the recompletion of this well. Provide an as-is wellbore diagram at this time.