

UNITED STATES
DEPARTMENT OF THE INTERIOR
BUREAU OF LAND MANAGEMENT

RCVD JUN 9 '08

OIL CONS. DIV.

DIST. 3

Sundry Notices and Reports on Wells

1. Type of Well

GAS

2. Name of Operator

BURLINGTON

RESOURCES OIL & GAS COMPANY LP

3. Address & Phone No. of Operator

PO Box 4289, Farmington, NM 87499 (505) 326-9700

4. Location of Well, Footage, Sec., T, R, M

Sec., T--N, R--W, NMPM

Unit L (NWSW) 2125' FSL & 1270' FWL, Sec. 16, T32N, R14W NMPM

5. Lease Number

I-22-IND-2772

6. If Indian, All. or

Tribe Name

Ute Mountain Ute

7. Unit Agreement Name

8. Well Name & Number

Ute #27

9. API Well No.

30-045-29276

10. Field and Pool

WC Hermosa/Barker DomeDesert
Creek/ Barker Dome Ismay

11. County and State

San Juan, NM

12. CHECK APPROPRIATE BOX TO INDICATE NATURE OF NOTICE, REPORT, OTHER DATA

Type of Submission

☒ Notice of Intent☐ Subsequent Report☐ Final Abandonment

Type of Action

☐ Abandonment☒ Recompletion☐ Plugging☐ Casing Repair☐ Altering Casing☐ Change of Plans☐ New Construction☐ Non-Routine Fracturing☐ Water Shut off☐ Conversion to Injection☒ Other Recomplete Barker Dome Ismay, WC Hermosa

13. Describe Proposed or Completed Operations

Burlington Resources requests to recomplete the subject well in the following formations:

WC Hermosa

Barker Dome Ismay

Please see attached procedure, wellbore diagram and plat.

RECEIVED

MAY 15 2008

Bureau of Land Management
Durango, Colorado

14. I hereby certify that the foregoing is true and correct.

Signed

Tracey N. Monroe

Tracey N. Monroe Title Regulatory Technician Date 5/14/08

(This space for Federal or State Office use)

APPROVED BY (S) DAN RABINOWITZ Title

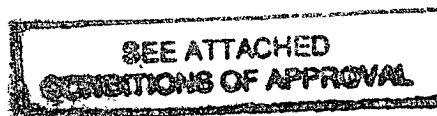
ACTING

MINERALS STAFF CHIEF

Date JUN 6 2008

CONDITION OF APPROVAL, if any:

Title 18 U.S.C. Section 1001, makes it a crime for any person knowingly and willfully to make any department or agency of the United States any false, fictitious or fraudulent statements or representations as to any matter within its jurisdiction.



PIT, CLOSED LOOP SYSTEM, BELOW
GRADE TANK, PROPOSED
ALTERNATIVE METHOD OR CLOSURE
PLAN TO BE DESIGNED, CONSTRUCTED
& OPERATED PURSUANT TO NMOCD
RULE 19.15.17 EFFECTIVE 06/16/08

MOCD

Hobbs, NM 88241-1988

State of New Mexico
Energy, Minerals & Natural Resources Department

Form
Revised February 2
Instructions
Submit to Appropriate District
State Lease - 4
Fee Lease - 3

DD, Artesia, NM 88211-0719

OIL CONSERVATION DIVISION
PO Box 2088
Santa Fe, NM 87504-2088

Brown Rd., Artesia, NM 87410

IV

10000, Santa Fe, NM 87504-2088

☐ AMENDED RI

WELL LOCATION AND ACREAGE DEDICATION PLAT

APN Number 30-045- 29276		Pool Code 96353/96354/	Pool Name Barker Dome Desert Creek/Barker Dome Ismay/ WC Hermosa 1632N14E
Property Code 7618	Property Name Ute		Well Number 27
OCRID No. 14538	Operator Name BURLINGTON RESOURCES OIL & GAS COMPANY LP		Elevation 6363'

10 Surface Location

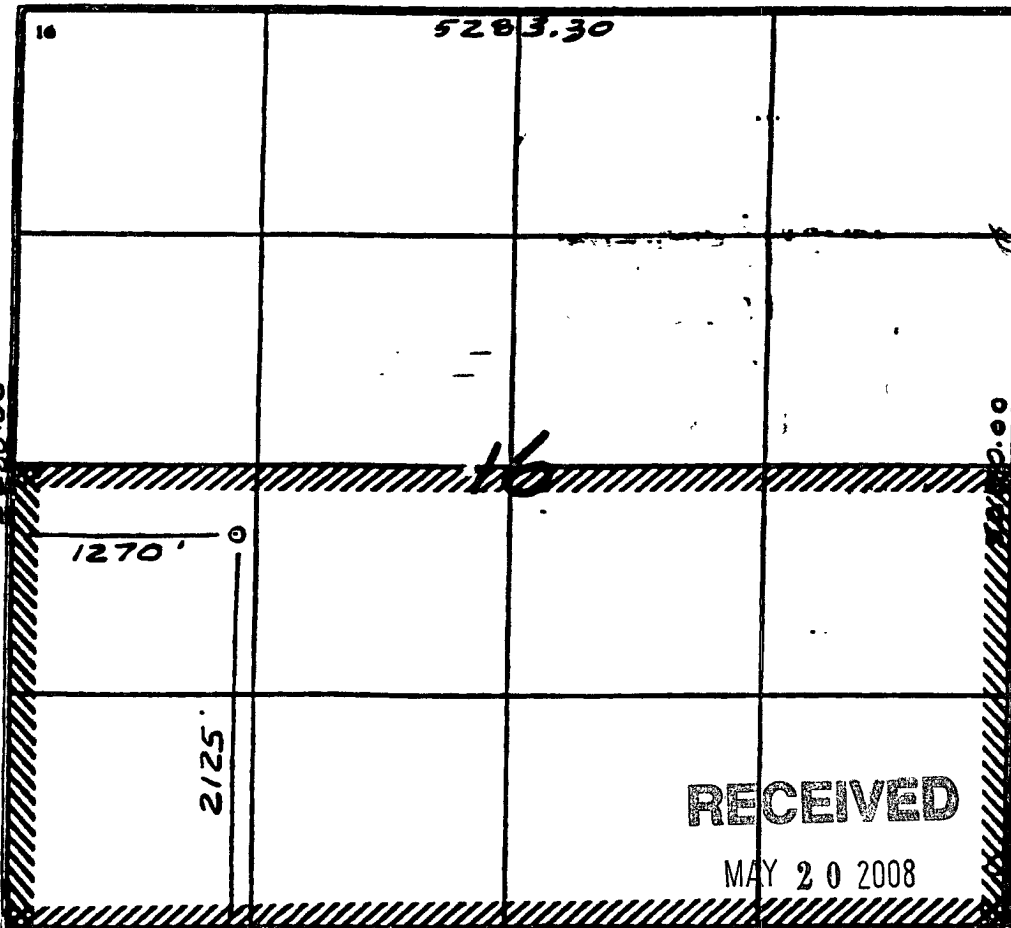
UL or lot no.	Section	Township	Range	Lot Idn	Feet from the	North/South line	Feet from the	East/West line	County
L	16	32N	14W		2125	South	1270	West	S.J.

11 Bottom Hole Location If Different From Surface

UL or lot no.	Section	Township	Range	Lot Idn	Feet from the	North/South line	Feet from the	East/West line	County

12 Dedicated Acres S/320 160 / 160	13 Joint or Infill	14 Consolidation Code	15 Order No.
--	--------------------	-----------------------	--------------

NO ALLOWABLE WILL BE ASSIGNED TO THIS COMPLETION UNTIL ALL INTERESTS HAVE BEEN CONSOLIDATED
OR A NON-STANDARD UNIT HAS BEEN APPROVED BY THE DIVISION



17 OPERATOR CERTIFICATE

I hereby certify that the information contained herein is true and complete to the best of my knowledge and

Tracey N. Monroe
Signature

Tracey N. Monroe
Printed Name

Regulatory Technician
Title

May 14, 2008
Date

18 SURVEYOR CERTIFICATE

I hereby certify that the well location shown on this plat was plotted from field notes of actual surveys made by me or under my supervision, and that the same is true and correct to the best of my belief.

11-4-94

Date of Survey

Signature and Seal of Surveyor

HERNANDEZ C. EDWARDS
8837
6457
Certificate Number

RECEIVED

MAY 20 2008

Bureau of Land Management
Durango, Colorado

Hobbs, NM 88241-1900

State of New Mexico
Energy, Minerals & Natural Resources Department

Form C-

Revised February 21, 1994

PO Box 2088, Santa Fe, NM 87504-2088

OIL CONSERVATION DIVISION

Submit to Appropriate District Office

PO Box 2088

Santa Fe, NM 87504-2088

State Lease - 4 Co

Fee Lease - 1 Co

☐ AMENDED REPORT

WELL LOCATION AND ACREAGE DEDICATION PLAT

' AFS Number 30-045- 29276	' Pool Code 96353/96354/	' Pool Name Barker Dome Desert Creek/Barker Dome Ismay/ WC Hermosa 1632N14E
' Property Code 7618	' Property Name Ute	' Well Number 27
' OGRID No. 14538	' Operator Name	' Elevation 6363'

10 Surface Location

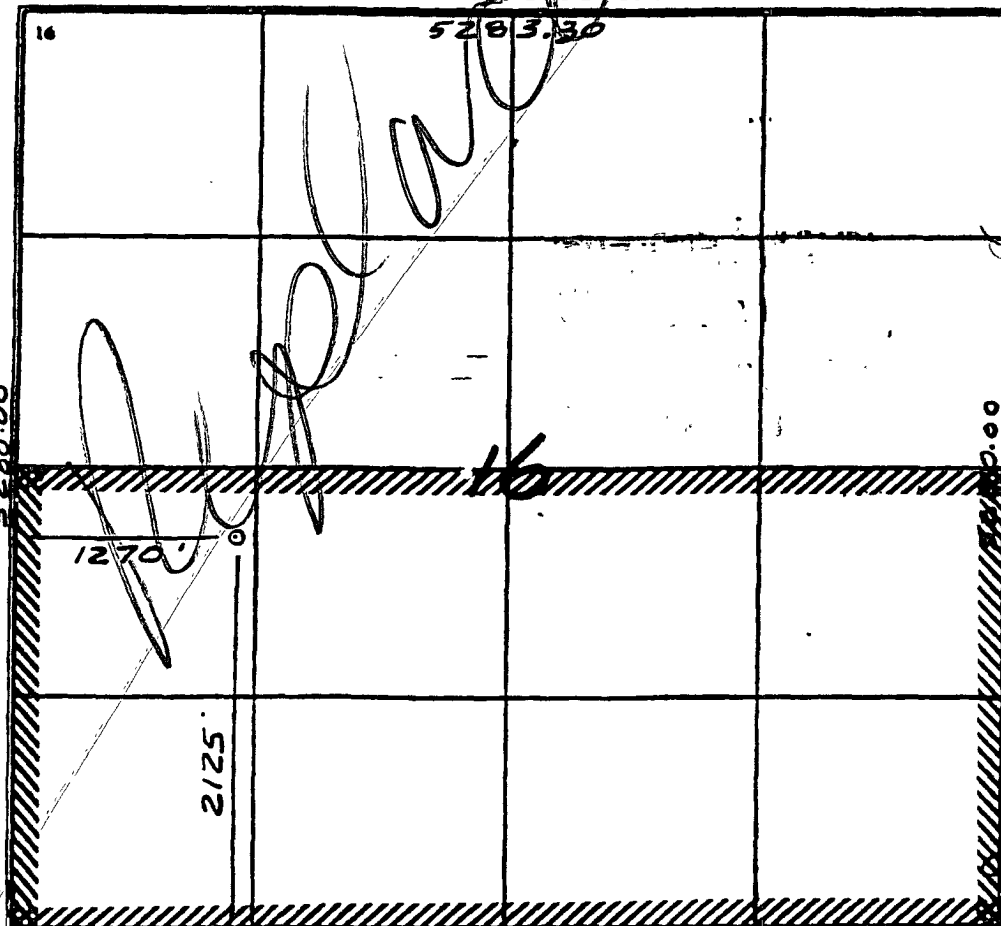
UL or lot no.	Section	Township	Range	Lot Idn	Feet from the	North/South line	Feet from the	East/West line	County
L	16	32N	14W		2125	South	1270	West	S.J.

11 Bottom Hole Location If Different From Surface

UL or lot no.	Section	Township	Range	Lot Idn	Feet from the	North/South line	Feet from the	East/West line	County

' Dedicated Acres S/320 S/320 160	' Joint or Infill	' Consolidation Code	' Order No.
---	-------------------	----------------------	-------------

NO ALLOWABLE WILL BE ASSIGNED TO THIS COMPLETION UNTIL ALL INTERESTS HAVE BEEN CONSOLIDATED OR A NON-STANDARD UNIT HAS BEEN APPROVED BY THE DIVISION



17 OPERATOR CERTIFICATION

I hereby certify that the information contained herein is true and complete to the best of my knowledge and belief.

Tracey N. Monroe
Signature

Tracey N. Monroe
Printed Name

Regulatory Technician
Title

May 14, 2008
Date

18 SURVEYOR CERTIFICATION

I hereby certify that the well location shown on this plat was plotted from field notes of actual surveys made by or under my supervision, and that the same is true and correct to the best of my belief.

11-4-94

Date of Survey

Signature and Seal of Surveyor

NEASE C. EDWARDS
NEASE C. EDWARDS
6857
6857
Certificate Number

Ute #27

Unit L, Section 16, Township 32N, Range 14W

Upper Ismay and Hermosa Recomplete

4/22/2008

Procedure:

1. MIRU service rig TOOH with tubing.
2. Run GR/CCL/CBL log.
3. RIH and set packer at +/- 8090'.
4. Re-acidize Desert Creek Formation with 14,000 gals of foamed 15% HCL down tubing.
5. Cleanup Desert Creek formation.
6. TOOH with packer.
7. Run in hole with Wireline set RBP. Flow test Desert Creek, shut-in by setting RBP @ +/- 8150'.
8. Run in hole with perf gun and perforate the Upper Ismay @ 8026' – 8046'.
9. RIH with a packer and set at +/- 7926'.
10. Acidize Upper Ismay with 14,000 gals of foamed 15% HCL down tubing.
11. Cleanup Upper Ismay formation.
12. TOOH with packer.
13. Run in hole with Wireline set RBP. Flow test Upper Ismay, shut-in by setting RBP @ +/- 8005'.
14. Run in hole with perf gun and perforate Hermosa 7980' – 7992', & 7922' – 7926'.
15. RIH with a packer and set at +/- 7822'.
16. Acidize Hermosa with 14,000 gals of foamed 15% HCL down tubing.
17. Cleanup Hermosa formation.
18. TOOH with packer.
19. Run in hole with Wireline set RBP. Flow test Hermosa, shut-in by setting RBP @ +/- 7872'.
20. Run in hole with perf gun and perforate Hermosa 7572 – 7584'.
21. RIH with a packer and set at +/- 7472'.
22. Acidize Hermosa with 14,000 gals of foamed 15% HCL down tubing.
23. Cleanup Hermosa formation.

24. TOOH with packer.

25. Run in hole with Wireline set RBP. Flow test Hermosa, shut-in by setting RBP @ +/- 7522'.

26. Shut-in well for a minimum of 7 days.

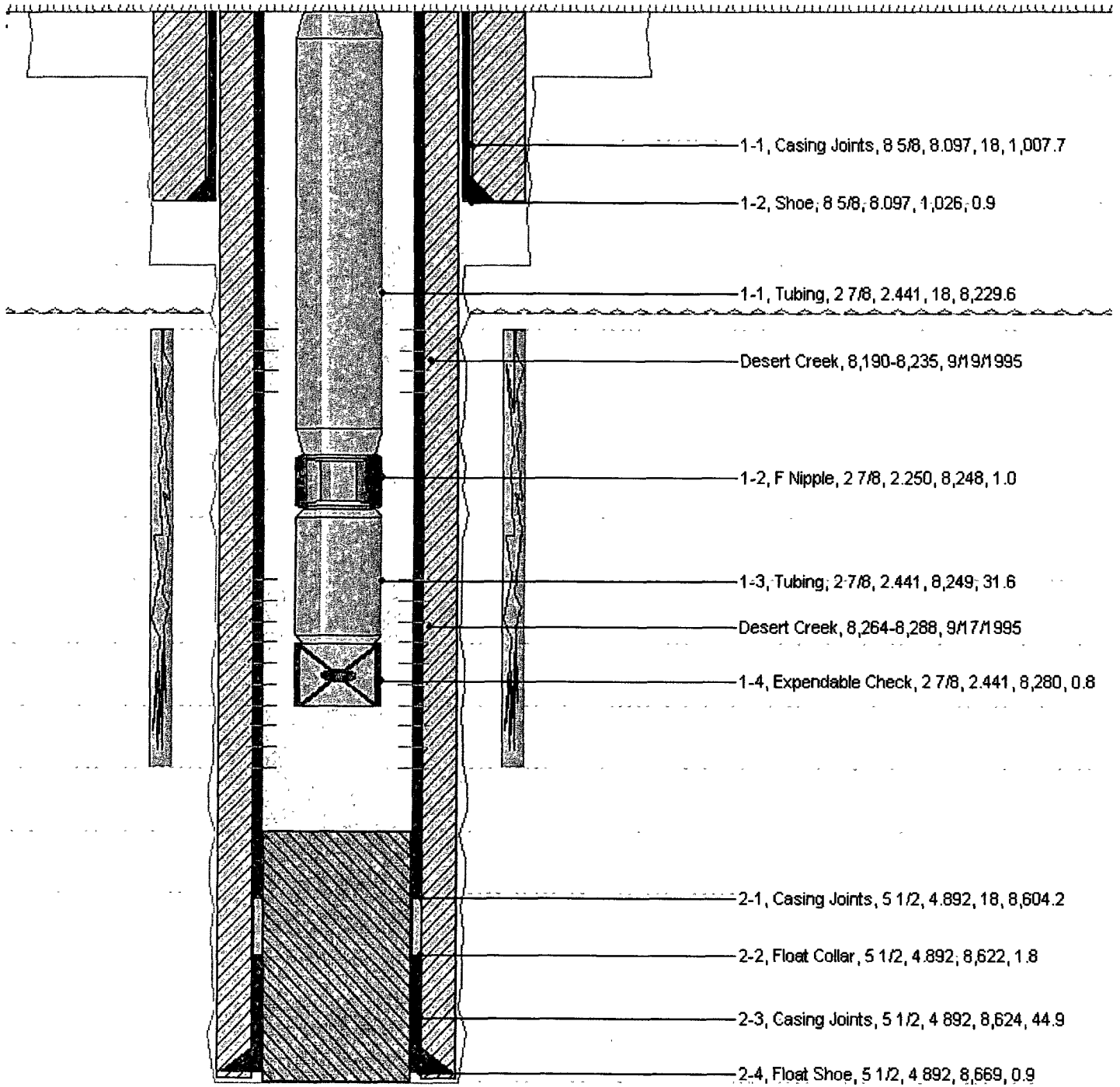
27. TIH and retrieve bridge plugs at 7522', 7872', 8005' and 8150'.

28. Run 2-7/8 Production Tubing set at 8281'.

29. Flow all zones to clean out, and recover any remaining load fluid, flow test.

30. Rig Down.

Ute #27 Current Wellbore



Burlington Resources Oil & Gas Company
Tribal Lease: I-22-IND-2772
Well: Ute Mountain Ute #27
Location: 2125' FSL & 1270' FWL
Sec. 16, T. 32 N., R. 14 W.
San Juan County, New Mexico

3160

Conditions of Approval:

1. Approval of this sundry is based upon the understanding that **Only** the Ismay and the Honaker Trail will be opened to the wellbore. Any other formations opened to the wellbore will be considered a violation of the Orders of the Authorized Officer.
2. Shut-in bottom hole pressures for **All** zones and after frac flowrates for **All** zones must be reported to this office on the Sundry Notice, Subsequent Report submitted after the completion of this well. A spinner survey would be adequate. A Completion Report should be submitted within 30 days of the recompletion of this well. Provide an as-is wellbore diagram at this time.