

District I
1625 N. French Dr., Hobbs, NM 88240

State of New Mexico
Energy Minerals and Natural Resources

Form C-144
June 16, 2008

District II
1301 W Grand Ave., Artesia, NM 88210

Department
Oil Conservation Division
1220 South St. Francis Dr.
Santa Fe, NM 87505

For temporary pits, closed-loop systems, and below-grade tanks, submit to the appropriate NMOCD District Office.

District III
1000 Rio Brazos Rd., Aztec, NM 87410

For permanent pits and exceptions submit to the Santa Fe Environmental Bureau office and provide a copy to the appropriate NMOCD District Office.

District IV
1220 S St Francis Dr., Santa Fe, NM 87505

**Pit, Closed-Loop System, Below-Grade Tank, or
Proposed Alternative Method Permit or Closure Plan Application**

Type of action: Permit of a pit, closed-loop system, below-grade tank, or proposed alternative method
 Closure of a pit, closed-loop system, below-grade tank, or proposed alternative method

Instructions: Please submit one application (Form C-144) per individual pit, closed-loop system, below-grade tank or alternative request

Please be advised that approval of this request does not relieve the operator of liability should operations result in pollution of surface water, ground water or the environment. Nor does approval relieve the operator of its responsibility to comply with any other applicable governmental authority's rules, regulations or ordinances.

Operator: ConocoPhillips Company	OGRID#: 217817
Address: PO Box 4289, Farmington, NM 87499	RCVD JUL 11 '08
Facility or well name: San Juan 30-5 Unit #247	OIL CONS. DIV.
API Number: 30-039-25297	OCD Permit Number: DIST. 3
U/L or Qtr/Qtr: G(SWNE) Section: 26 Township: 30N Range: 5W County: Rio Arriba	
Center of Proposed Design: Latitude: 36.78514' N Longitude: 107.32228' W NAD: <input type="checkbox"/> 1927 <input checked="" type="checkbox"/> 1983	
Surface Owner: <input checked="" type="checkbox"/> Federal <input type="checkbox"/> State <input type="checkbox"/> Private <input type="checkbox"/> Tribal Trust or Indian Allotment	

<input type="checkbox"/> Pit: Subsection F or G of 19.15.17.11 NMAC Temporary: <input type="checkbox"/> Drilling <input type="checkbox"/> Workover <input type="checkbox"/> Permanent <input type="checkbox"/> Emergency <input type="checkbox"/> Cavitation <input type="checkbox"/> Lined <input type="checkbox"/> Unlined Liner type: Thickness _____ mil <input type="checkbox"/> LLDPE <input type="checkbox"/> HDPE <input type="checkbox"/> PVC <input type="checkbox"/> Other _____ <input type="checkbox"/> String-Reinforced Seams: <input type="checkbox"/> Welded <input type="checkbox"/> Factory <input type="checkbox"/> Other _____ Volume: _____ bbl Dimensions: L _____ x W _____ x D _____	<input checked="" type="checkbox"/> Closed-loop Systems: Subsection H of 19.15.17.11 NMAC <input type="checkbox"/> Drying Pad <input checked="" type="checkbox"/> Tanks <input type="checkbox"/> Haul-off Bins <input type="checkbox"/> Other: _____ <input type="checkbox"/> Lined <input type="checkbox"/> Unlined Liner type: Thickness _____ mil <input type="checkbox"/> LLDPE <input type="checkbox"/> HDPE <input type="checkbox"/> PVC <input type="checkbox"/> Other: _____ Seams: <input type="checkbox"/> Welded <input type="checkbox"/> Factory <input type="checkbox"/> Other: _____ Volume: 120 bbl 25 yd ³ Dimensions: Length 20 x Width 10
---	--

<input type="checkbox"/> Below-grade tank: Subsection I of 19.15.17.11 NMAC Volume: _____ bbl Type of fluid: _____ Tank Construction Material: _____ <input type="checkbox"/> Secondary containment with leak detection <input type="checkbox"/> Visible sidewalls, liner, 6-inch lift and automatic overflow shut-off <input type="checkbox"/> Visible sidewalls and liner <input type="checkbox"/> Visible sidewalls only <input type="checkbox"/> Other: _____ Liner type: Thickness: _____ mil <input type="checkbox"/> HDPE <input type="checkbox"/> PVC <input type="checkbox"/> Other: _____	Fencing: Subsection D of 19.15.17.11 NMAC <input type="checkbox"/> Chain link, six feet in height, two strands of barbed wire at top <input type="checkbox"/> Four foot height, four strands of barbed wire evenly spaced between one and four feet Netting: Subsection E of 19.15.17.11 <input type="checkbox"/> Screen <input type="checkbox"/> Netting <input type="checkbox"/> Other _____ <input type="checkbox"/> Monthly inspections Signs: Subsection C of 19.15.17.11 NMAC <input type="checkbox"/> 12"x 24", 2" lettering, provided Operator's name, site location, and emergency telephone numbers <input checked="" type="checkbox"/> Signed in compliance with 19.15.3.103 NMAC
--	---

<input type="checkbox"/> Alternative Method: Submittal of an exception request is required. Exceptions must be submitted to the Santa Fe Environmental Bureau office for consideration of approval.	Administrative Approvals and Exceptions: Justifications and/or demonstrations of equivalency are required. Please refer to 19.15.17 NMAC for guidance. Please check a box if one or more of the following is requested, if not leave blank: <input type="checkbox"/> Administrative approval(s): Requests must be submitted to the appropriate division district or the Santa Fe Environmental Bureau office for consideration of approval. (Fencing in Design Plan) <input type="checkbox"/> Exception(s): Requests must be submitted to the Santa Fe Environmental Bureau office for consideration of approval.
---	--

Siting Criteria (regarding permitting): 19.15.17.10 NMAC

Instructions: The applicant must demonstrate compliance for each siting criteria below in the application. Recommendations of acceptable source material are provided below. Requests regarding changes to certain siting criteria may require administrative approval from the appropriate district office or may be considered an exception which must be submitted to the Santa Fe Environmental Bureau Office for consideration of approval. Applicant must attach justification for request. Please refer to 19.15.17.10 NMAC for guidance. Siting criteria does not apply to drying pads or above grade-tanks associated with a closed-loop system.

Ground water is less than 50 feet below the bottom of the temporary pit, permanent pit, or below-grade tank. Yes No
 - NM Office of the State Engineer - iWATERS database search; USGS; Data obtained from nearby wells

Within 300 feet of a continuously flowing watercourse, or 200 feet of any other watercourse, lakebed, sinkhole, or playa lake (measured from the ordinary high-water mark). Yes No
 - Topographic map; Visual inspection (certification) of the proposed site

Within 300 feet from a permanent residence, school, hospital, institution, or church in existence at the time of initial application. Yes No
(Applies to temporary, emergency, or cavitation pits and below-grade tanks)
 - Visual inspection (certification) of the proposed site; Aerial photo; Satellite image

Within 1000 feet from a permanent residence, school, hospital, institution, or church in existence at the time of initial application. Yes No
(Applied to permanent pits)
 - Visual inspection (certification) of the proposed site; Aerial photo; Satellite image

Within 500 horizontal feet of a private, domestic fresh water well or spring that less than five households use for domestic or stock watering purposes, or within 1000 horizontal feet of any other fresh water well or spring, in existence at the time of initial application. Yes No
 - NM Office of the State Engineer - iWATERS database search; Visual inspection (certification) of the proposed site.

Within incorporated municipal boundaries or within a defined municipal fresh water well field covered under a municipal ordinance adopted pursuant to NMSA 1978, Section 3-27-3, as amended Yes No
 - Written confirmation or verification from the municipality; Written approval obtained from the municipality

Within 500 feet of a wetland. Yes No
 - US Fish and Wildlife Wetland Identification map; Topographic map; Visual inspection (certification) of the proposed site

Within the area overlying a subsurface mine. Yes No
 - Written confirmation or verification or map from the NM EMNRD - Mining and Mineral Division

Within an unstable area. Yes No
 - Engineering measures incorporated into the design; NM Bureau of Geology & Mineral Resources; USGS; NM Geological Society; Topographic map

Within a 100-year floodplain Yes No
 - FEMA map

Temporary Pits, Emergency Pits, and Below-grade Tanks Permit Application Attachment Checklist: Subsection B of 19.15.17.9 NMAC

Instructions: Each of the following items must be attached to the application. Please indicate, by a check mark in the box, that the documents are attached.

Hydrogeologic Report (Below-grade Tanks) - based upon the requirements of Paragraph (4) of Subsection B of 19.15.17.9 NMAC

Hydrogeologic Data (Temporary and Emergency Pits) - based upon the requirements of Paragraph (2) of Subsection B of 19.15.17.9 NMAC

Siting Criteria Compliance Demonstrations - based upon the appropriate requirements of 19.15.17.10 NMAC

Design Plan - based upon the appropriate requirements of 19.15.17.11 NMAC

Operating and Maintenance Plan - based upon the appropriate requirements of 19.15.17.12 NMAC

Closure Plan - based upon the appropriate requirements of Subsection C of 19.15.17.9 NMAC and 19.15.17.13 NMAC

Previously Approved Design (attach copy of _____ API Number: _____ or Permit _____)

Closed-loop Systems Permit Application Attachment Checklist: Subsection B of 19.15.17.9 NMAC

Instructions: Each of the following items must be attached to the application. Please indicate, by a check mark in the box, that the documents are attached.

Geologic and Hydrogeologic Data (required for on-site closure) - based upon the requirements of Paragraph (3) of Subsection B of 19.15.17.9

Siting Criteria Compliance Demonstrations (required for on-site closure) - based upon the appropriate requirements of 19.15.17.10 NMAC

Design Plan - based upon the appropriate requirements of 19.15.17.11 NMAC

Operating and Maintenance Plan - based upon the appropriate requirements of 19.15.17.12 NMAC

Closure Plan - based upon the appropriate requirements of Subsection C of 19.15.17.9 NMAC and 19.15.17.13 NMAC

Previously Approved Design (attach copy of _____ API Number: _____)

Permanent Pits Permit Application Checklist: Subsection B of 19.15.17.9 NMAC

Instructions: Each of the following items must be attached to the application. Please indicate, by a check mark in the box, that the documents are attached.

- Hydrogeologic Report - based upon the requirements of Paragraph (I) of Subsection B of 19.15.17.9 NMAC
- Siting Criteria Compliance Demonstrations - based upon the appropriate requirements of 19.15.17.10 NMAC
- Climatological Factors Assessment
- Certified Engineering Design Plans - based upon the appropriate requirements of 19.15.17.11 NMAC
- Dike Protection and Structural Integrity Design: based upon the appropriate requirements of 19.15.17.11 NMAC
- Leak Detection Design - based upon the appropriate requirements of 19.15.17.11 NMAC
- Liner Specifications and Compatibility Assessment - based upon the appropriate requirements of 19.15.17.11 NMAC
- Quality Control/Quality Assurance Construction and Installation Plan
- Operating and Maintenance Plan - based upon the appropriate requirements of 19.15.17.12 NMAC
- Freeboard and Overtopping Prevention Plan - based upon the appropriate requirements of 19.15.17.11 NMAC
- Nuisance or Hazardous Odors, including H2S, Prevention Plan
- Emergency Response Plan
- Oil Field Waste Stream Characterization
- Monitoring and Inspection Plan
- Erosion Control Plan
- Closure Plan - based upon the appropriate requirements of Subsection C of 19.15.17.9 NMAC and 19.15.17.13 NMAC

Proposed Closure: 19.15.17.13 NMAC

- Type: Drilling Workover Emergency Cavitation Permanent Pit Below-grade Tank Closed-loop System Alternative
- Proposed Closure Waste Excavation and Removal
- On-site Closure Method (only for temporary pits and closed-loop
- In-place On-site Trench
- Alternative Closure Method (Exceptions must be submitted to the Santa Fe Environmental Bureau for

Siting Criteria (regarding on-site closure methods only): 19.15.17.10 NMAC

Instructions: Each siting criteria requires a demonstration of compliance in the closure plan. Recommendations of acceptable source material are provided below. Requests regarding changes to certain siting criteria may require administrative approval from the appropriate district office or may be considered an exception which must be submitted to the Santa Fe Environmental Bureau office for consideration of approval. Justification and/or demonstrations of equivalency are required. Please refer to 19.15.17.10 NMAC for guidance.

- Ground water is less than 50 feet below the bottom of the buried waste. Yes No
 - NM Office of the State Engineer - iWATERS database search; USGS; Data obtained from nearby wells NA
- Ground water is between 50 and 100 feet below the bottom of the buried waste. Yes No
 - NM Office of the State Engineer - iWATERS database search; USGS; Data obtained from nearby wells NA
- Ground water is more than 100 feet below the bottom of the buried waste. Yes No
 - NM Office of the State Engineer - iWATERS database search; USGS; Data obtained from nearby wells NA
- Within 300 feet of a continuously flowing watercourse, or 200 feet of any other watercourse, lakebed, sinkhole, or playa lal (measured from the ordinary high-water mark). Yes No
 - Topographic map; Visual inspection (certification) of the proposed site
- Within 300 feet from a permanent residence, school, hospital, institution, or church in existence at the time of initial Yes No
 - Visual inspection (certification) of the proposed site; Aerial photo; Satellite image
- Within 500 horizontal feet of a private, domestic fresh water well or spring that less than five households use for domestic or stock watering purposes, or within 1000 horizontal feet of any other fresh water well or spring, in existence at the time of initial application. Yes No
 - NM Office of the State Engineer - iWATERS database; Visual inspection (certification) of the proposed site
- Within incorporated municipal boundaries or within a defined municipal fresh water well field covered under a municipal ordinance adopted pursuant to NMSA 1978, Section 3-27-3, as amended Yes No
 - Written confirmation or verification from the municipality; Written approval obtained from the municipality
- Within 500 feet of a wetland. Yes No
 - proposed site
- Within the area overlying a subsurface mine. Yes No
 - Written confirmation or verification or map from the NM EMNRD - Mining and Mineral Division
- Within an unstable area. Yes No
 - Engineering measures incorporated into the design; NM Bureau of Geology & Mineral Resources; USGS; NM Geological Society; Topographic map
- Within a 100-year floodplain Yes No
 - FEMA map

Waste Excavation and Removal Closure Plan Checklist: (19.15.17.13 NMAC) *Instructions: Each of the following items must be attached to the closure plan. Please indicate, by a check mark in the box, that the documents are attached.*

- Protocols and Procedures - based upon the appropriate requirements of 19.15.17.13 NMAC
- Confirmation Sampling Plan (if applicable) - based upon the appropriate requirements of Subsection F of 19.15.17.13 NMAC
- Disposal Facility Name and Permit Number (for liquids, drilling fluids and drill cuttings)
- Soil Backfill and Cover Design Specifications - based upon the appropriate requirements of Subsection H of 19.15.17.13 NMAC
- Re-vegetation Plan - based upon the appropriate requirements of Subsection I of 19.15.17.13 NMAC
- Site Reclamation Plan - based upon the appropriate requirements of Subsection G of 19.15.17.13 NMAC

Waste Removal Closure for Closed-loop Systems That Utilize Haul-off Bins Only: (19.15.17.13 D NMAC) *Instructions: Please identify the facility or facilities for the disposal of liquids, drilling fluids and drill cuttings.*

Disposal Facility Name: Envirotech, Basin Disposal Disposal Facility Permit Number: NM-01-0011 & NM-01-005

On-Site Closure Plan Checklist: (19.15.17.13 NMAC) *Instructions: Each of the following items must be attached to the closure plan. Please indicate, by a check mark in the box, that the documents are attached.*

- Siting Criteria Compliance Demonstrations - based upon the appropriate requirements of 19.15.17.10 NMAC
- Proof of Surface Owner Notice - based upon the appropriate requirements of Subsection F of 19.15.17.13 NMAC
- Construction and Design of Burial Trench (if applicable) based upon the appropriate requirements of 19.15.17.11 NMAC
- Protocols and Procedures - based upon the appropriate requirements of 19.15.17.13 NMAC
- Confirmation Sampling Plan (if applicable) - based upon the appropriate requirements of Subsection F of 19.15.17.13 NMAC
- Waste Material Sampling Plan - based upon the appropriate requirements of Subsection F of 19.15.17.13 NMAC
- Disposal Facility Name and Permit Number (for liquids, drilling fluids and drill cuttings or in case on-site closure standards cannot be
- Soil Cover Design - based upon the appropriate requirements of Subsection H of 19.15.17.13 NMAC
- Re-vegetation Plan - based upon the appropriate requirements of Subsection I of 19.15.17.13 NMAC
- Site Reclamation Plan - based upon the appropriate requirements of Subsection G of 19.15.17.13 NMAC

Operator Application Certification:

I hereby certify that the information submitted with this application is true, accurate and complete to the best of my knowledge and belief.

Name (Print): Crystal Tafoya Title: Regulatory Technician
Signature: *Crystal Tafoya* Date: 7/10/2008
e-mail address: crystal.tafoya@conocophillips.com Telephone: 505-326-9837

OCD Approval: Permit Application (including closure plan) Closure Plan (only)

OCD Representative Signature: *B. Bell* Approval Date: 7/10/08

Title: Environ Spec OCD Permit Number: _____

Closure Report (required within 60 days of closure completion): Subsection K of 19.15.17.13 NMAC

Closure Completion Date: _____

Closure Method:

- Waste Excavation and Removal On-Site Closure Alternative Closure
- If different from approved plan, please explain

Closure Report Attachment Checklist: *Instructions: Each of the following items must be attached to the closure report. Please indicate, by a check mark in the box, that the documents are attached.*

- Proof of Closure Notice
- Proof of Deed Notice (if applicable)
- Plot Plan
- Confirmation Sampling Analytical Results
- Waste Material Sampling Analytical Results
- Disposal Facility Name and Permit Number
- Soil Backfilling and Cover Installation
- Re-vegetation Application Rates and Seeding Technique
- Site Reclamation (Photo Documentation)

On-site Closure Latitude: _____ Longitude: _____ NAD: 1927 1983

Operator Closure Certification:

I hereby certify that the information and attachments submitted with this closure report is true, accurate and complete to the best of my knowledge and belief. I also certify that the closure complies with all applicable closure requirements and conditions specified in the approved closure plan.

Name (Print): _____ Title: _____
Signature: _____ Date: _____
e-mail address: _____ Telephone: _____

Submit to Appropriate
District Office
State Lease - 4 copies
Fee Lease - 3 copies

OIL CONSERVATION DIVISION

RECEIVED
ELM

DISTRICT I
P.O. Box 1980, Hobbs, NM 88240

P.O. Box 2088
Santa Fe, New Mexico 7504-2088

20 JUL 20 AM 7:38

DISTRICT II
P.O. Drawer DD, Artesia, NM 88210

DISTRICT III
1000 Rio Brazos Rd., Aztec, NM 87410

WELL LOCATION AND ACREAGE DEDICATION PLAT

All Distances must be from the outer boundaries of the section

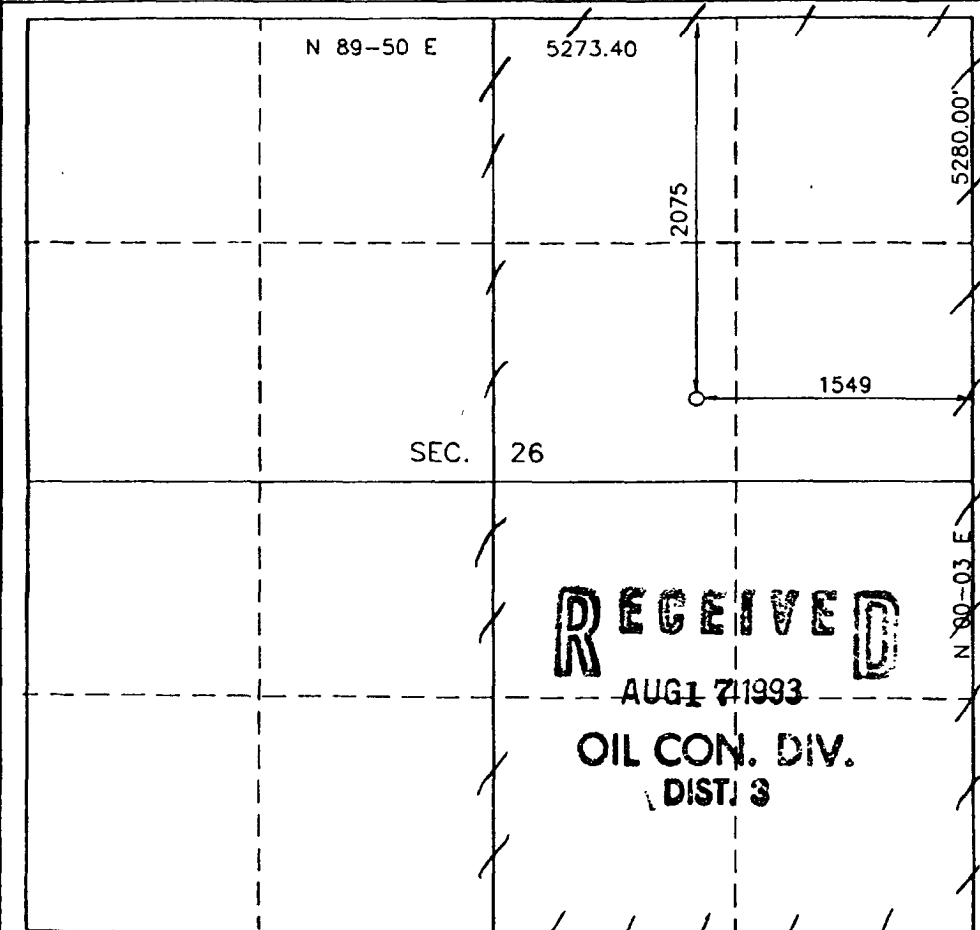
Operator PHILLIPS PETROLEUM		Lease SAN JUAN 30-5 UNIT		Well No. 247
Unit Letter G	Section 26	Township T.30 N.	Range R.5 W.	County RIO ARRIBA
Actual Footage Location of Well: 2075 feet from the NORTH line and 1549 feet from the EAST line				
Ground level Elev. 6942	Producing Formation Fruitland Coal	Pool Basin Fruitland Coal	Dedicated Acreage: 320 Acres	

- Outline the acreage dedicated to the subject well by colored pencil or hachue marks on the plat below.
- If more than one lease is dedicated to the well, outline each and identify the ownership thereof (both as to working interest and royalty).
- If more than one lease of different ownership is dedicated to the well, have the interest of all owners been consolidated by communitization, unitization, force-pooling, etc.?

Yes No If answer is "yes" type of consolidation Unitization

If answer is "no" list the owners and tract descriptions which have actually been consolidated. (Use reverse side of this form if necessary.)

No allowable will be assigned to the well until all interests have been consolidated (by communitization, unitization, forced-pooling, or otherwise) or until a non-standard unit, eliminating such interest, has been approved by the Division.



OPERATOR CERTIFICATION

I hereby certify that the information contained herein is true and complete to the best of my knowledge and belief.

Signature: *L. E. Robinson*

Printed Name: **L. E. Robinson**

Position: **Sr. Drlg. & Prod. Engineer**

Company: **Phillips Petroleum Company**

Date: **7-15-93**

SURVEYOR CERTIFICATION

I hereby certify that the well location shown on this plat was plotted from field notes of actual surveys made by me or under my supervision, and that the same is true and correct to the best of my knowledge and belief.

Date Surveyed: **APRIL 6, 1993**

Signature & Seal
Professional Survey

HENRY P. BROADBENT JR.

Certificate No. **11393**

REGISTERED PROFESSIONAL SURVEYOR

RECEIVED
AUG 7 1993
OIL CON. DIV.
DIST. 3

ConocoPhillips Company Closed-loop Plans

Closed-loop Design Plan

COPC's closed loop system will not entail a drying pad, temporary pit, below grade tank or sump. It will include an above ground tank suitable for holding the cuttings and fluids for rig operations. The tank will be sufficient volume to maintain a safe free board between disposal of the liquids and solids from rig operations.

1. Fencing is not required for an above ground closed-loop system
2. It will be signed in compliance with 19.15.3.103 NMAC
3. A frac tank will be on location to store fresh water

Closed-loop Operating and Maintenance Plan

COPC's closed-loop tank will be operated and maintained to contain liquids and solids in order to prevent contamination of fresh water sources, in order to protect public health and the environment. To ensure the operation is maintained the following steps will be followed:

1. The liquids will be vacuumed out and disposed of at the Basin Disposal facility (Permit # NM-01-005). Solids in the closed-loop tank will be vacuumed out and disposed of at Envirotech (Permit # NM-01-0011) on a periodic basis to prevent over topping.
2. No hazardous waste, miscellaneous solid waste or debris will be discharged into or stored in the tank. Only fluids or cutting used or generated by rig operations will be placed or stored in the tank.
3. The division district office will be notified within 48 hours of the discovery of compromised integrity of the closed-loop tank. Upon the discovery of the compromised tank, repairs will be enacted immediately
4. All of the above operations will be inspected and a log will be signed and dated. During rig operations the inspection will be daily.

Closed-loop Closure Plan

The closed-loop tank will be closed in accordance with 19.15.17.13. This will be done by transporting cuttings and all remaining sludges to Envirotech (Permit # NM-01-0011) immediately following rig operations. All remaining liquids will be transported and disposed of in the Basin Disposal facility (Permit # NM-01-005). The tanks will be removed from the location as part of the rig move. At time of well abandonment, the site will be reclaimed and re-vegetated to pre-existing conditions when possible.