

District I
1625 N. French Dr., Hobbs, NM 88240

State of New Mexico
Energy, Minerals & Natural Resources Department

Form C-102
Revised October 12, 2005

District II
1301 W. Grand Avenue, Artesia, NM 88210

Instructions on back
Submit to Appropriate District Office
State Lease - 4 Copies
Fee Lease - 3 Copies

District III
1000 Rio Brazos Rd., Aztec, NM 87410

OIL CONSERVATION DIVISION
1220 South St. Francis Dr.
Santa Fe, NM 87505

District IV
1220 S. St. Francis Dr., Santa Fe, NM 87505

AMENDED REPORT

30-045-34458

WELL LOCATION AND ACREAGE DEDICATION PLAT "As Drilled"

*API Number		*Pool Code		*Pool Name	
		72319 / 71599		BLANCO MESAVERDE / BASIN DAKOTA	
*Property Code		*Property Name		*Well Number	
17033		ROSA UNIT		88C	
*OGRID No.		*Operator Name		*Elevation	
120782		WILLIAMS PRODUCTION COMPANY		6218'	

¹⁰ Surface Location

UL or lot no.	Section	Township	Range	Lot Idn	Feet from the	North/South line	Feet from the	East/West line	County
B	8	31N	6W		1060	NORTH	2230	EAST	SAN JUAN

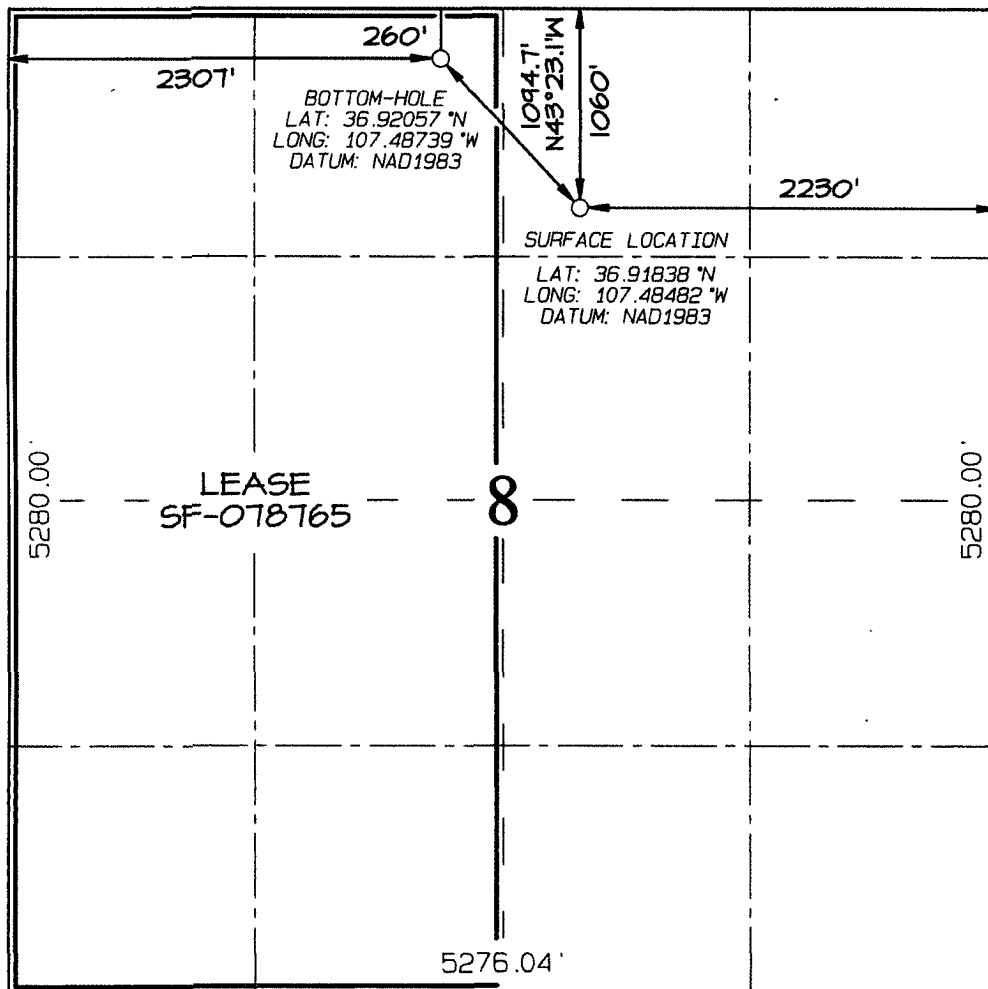
¹¹ Bottom Hole Location If Different From Surface

UL or lot no.	Section	Township	Range	Lot Idn	Feet from the	North/South line	Feet from the	East/West line	County
C	8	31N	6W		260	NORTH	2307	WEST	SAN JUAN

¹² Dedicated Acres	¹³ Joint or Infill	¹⁴ Consolidation Code	¹⁵ Order No.
320.0 Acres - (W/2)			RCVD JUL 16 '08 NSL 585 / OIL CONS. DIV.

NO ALLOWABLE WILL BE ASSIGNED TO THIS COMPLETION UNTIL ALL INTERESTS HAVE BEEN CONSOLIDATED OR A NON-STANDARD UNIT HAS BEEN APPROVED BY THE DIVISION

¹⁶ 2644.62' 2644.62' DIST. 3



¹⁷ OPERATOR CERTIFICATION
I hereby certify that the information contained herein is true and complete to the best of my knowledge and belief, and that this organization either owns a working interest or unleased mineral interest in the land including the proposed bottom-hole location or has a right to drill this well at this location pursuant to a contract with an owner of such a mineral or working interest, or to a voluntary pooling agreement or a compulsory pooling order heretofore entered by the division.

Heather Riley 7/15/08
Signature Date
Heather Riley, Regulatory Specialist
Printed Name

¹⁸ SURVEYOR CERTIFICATION
I hereby certify that the well location shown on this plat was plotted from field notes of actual surveys made by me or under my supervision, and that the same is true and correct to the best of my belief
Date of Survey: MARCH 26, 2007
Signature and Seal of Professional Surveyor



JASON C. EDWARDS
Certificate Number 15269

40

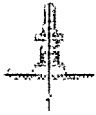


ROSA UNIT 88C
SAN JUAN COUNTY, NM
30-045-34458

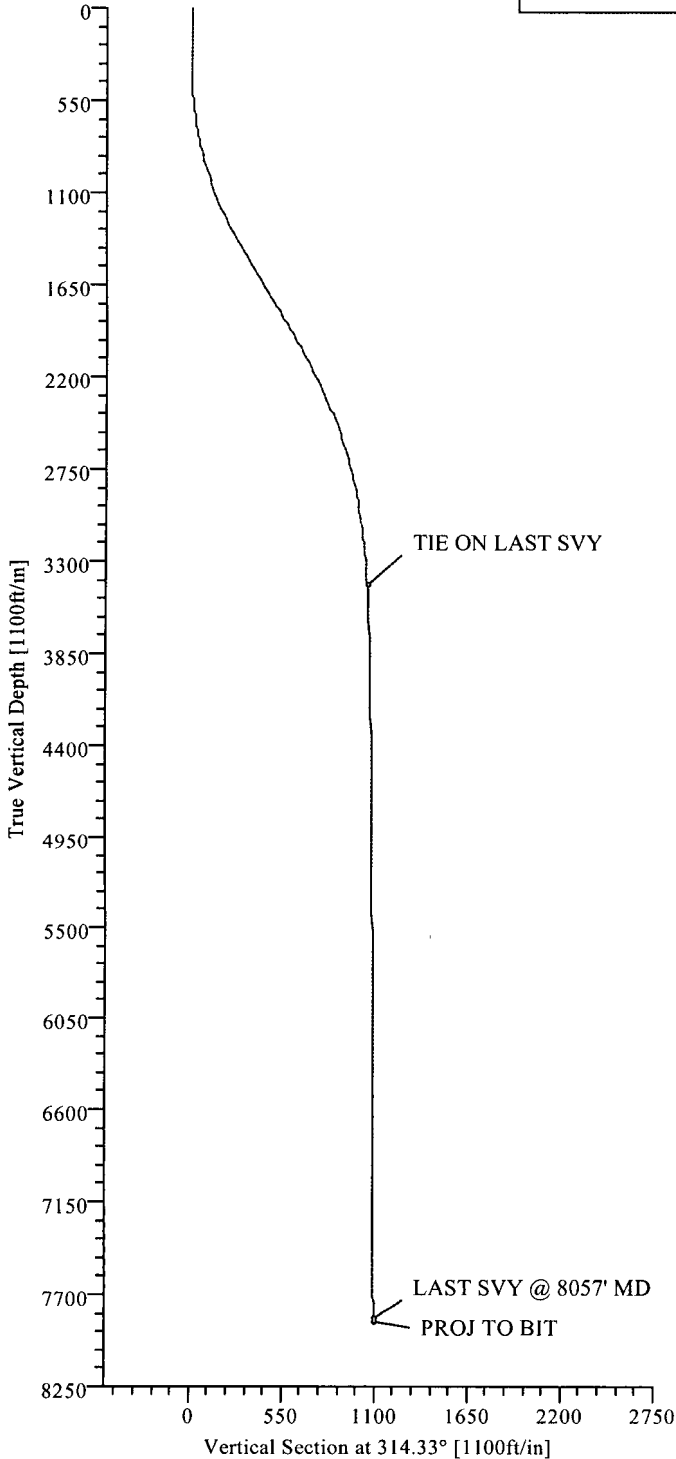
SECTION DETAILS										
Sec	MD	Inc	Azi	TVD	+N/-S	+E/-W	DLeg	TFace	VSec	Target
1	0.00	0.00	314.33	0.00	0.00	0.00	0.00	0.00	0.00	
2	400.00	0.00	314.33	400.00	0.00	0.00	0.00	0.00	0.00	
3	1400.00	30.00	314.33	1354.93	178.80	-183.04	3.00	314.33	255.76	
4	2211.92	30.00	314.33	2058.07	462.47	-473.43	0.00	0.00	661.54	
5	3697.82	0.00	314.33	3477.00	728.15	-745.41	2.02	180.00	1041.57	Csg Pt P2
6	8057.82	0.00	314.33	7837.00	728.15	-745.41	0.00	314.33	1041.57	P2

WELL DETAILS							
Name	+N/-S	+E/-W	Northing	Easting	Latitude	Longitude	Slot
Rosa Unit 88C	0.00	0.00	2153808.21	2824974.89	36°55'06.168N	107°29'05.352W	N/A

TARGET DETAILS							
Name	TVD	+N/-S	+E/-W	Latitude	Longitude	Shape	
None							

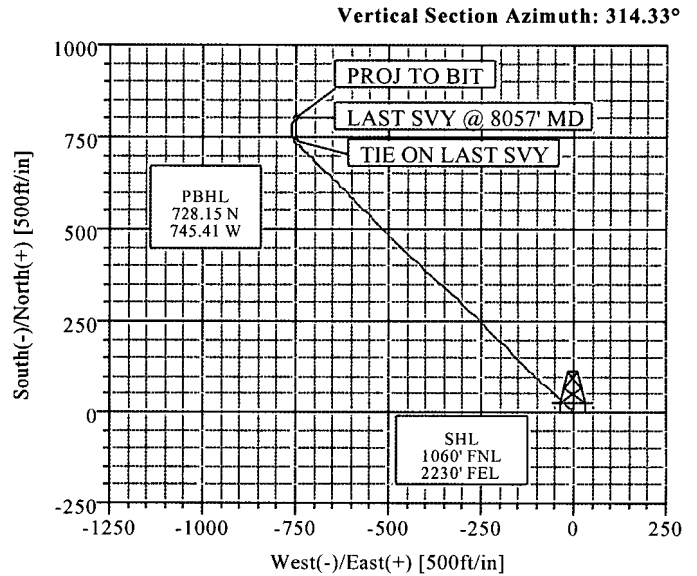


KB ELEV: 6232'
 GR ELEV: 6218'



RCVD JUL 16 '08
 OIL CONS. DIV.

DIST. 3



Azimuths to True North
 Magnetic North: 10.15°

Magnetic Field
 Strength: 51242nT
 Dip Angle: 63.75°
 Date: 7/4/2008
 Model: igrf2005

Total Correction to True North 10.15°

Survey: ST00 SVY (Rosa Unit 88C/ST 00)
 Created By: Lindsey Maddux Date: 7/9/2008



Weatherford International, Inc.

Survey Report



Company: WILLIAMS PRODUCTION	Date: 7/9/2008	Time: 14:10:27	Page: 1
Field: San Juan County, NM (NAD 83)	Co-ordinate(NE) Reference: Site: Rosa Unit 88C, True North		
Site: Rosa Unit 88C	Vertical (TVD) Reference: SITE 6232.0		
Well: Rosa Unit 88C	Section (VS) Reference: Well (0.00N,0.00E,314.33Azi)		
Wellpath: ST 00	Survey Calculation Method: Minimum Curvature	Db: Sybase	

Field: San Juan County, NM (NAD 83)		
Map System: US State Plane Coordinate System 1983	Map Zone: New Mexico, Western Zone	
Geo Datum: GRS 1980	Coordinate System: Site Centre	
Sys Datum: Mean Sea Level	Geomagnetic Model: igrf2005	

Site: Rosa Unit 88C Sect. 8 T31N R6W San Juan County, NM			
Site Position:	Northing: 2153808.21 ft	Latitude: 36 55 6.168 N	
From: Geographic	Easting: 2824974.89 ft	Longitude: 107 29 5.352 W	
Position Uncertainty: 0.00 ft		North Reference: True	
Ground Level: 6218 00 ft		Grid Convergence: 0.21 deg	

Well: Rosa Unit 88C				Slot Name:			
Well Position:	+N/-S 0 00 ft	Northing: 2153808.21 ft	Latitude: 36 55 6.168 N				
	+E/-W 0 00 ft	Easting: 2824974.89 ft	Longitude: 107 29 5.352 W				
Position Uncertainty:	0 00 ft						

Wellpath: ST 00				Drilled From: 1			
Current Datum: SITE		Height 6232.00 ft	Tie-on Depth: 3659.00 ft		Above System Datum: Mean Sea Level		
Magnetic Data: 7/4/2008			Declination: 10.15 deg		Mag Dip Angle: 63.75 deg		
Field Strength: 51242 nT			+E/-W		Direction		
Vertical Section: Depth From (TVD)		+N/-S	ft		deg		
	ft	ft					
	0.00	0 00		0.00	314.33		

Survey: ST00 SVY	Start Date: 7/4/2008
Company: Weatherford International, Inc	Engineer: Lindsey Maddux
Tool: MWD;MWD - Standard	Tied-to: From: Definitive Path

Survey: ST00 SVY

MD ft	Incl deg	Azim deg	TVD ft	+N/-S ft	+E/-W ft	VS ft	DLS deg/100ft	Build deg/100ft	Turn deg/100ft	Tool/Comment
3659.00	3.44	327.51	3437.62	737.15	-750.41	1051.90	0.00	0.00	0.00	TIE ON LAST SVY
3783.00	1.88	322.26	3561.49	741.89	-753.65	1057.54	1.27	-1.26	-4.23	MWD
3876.00	1.69	322.89	3654.44	744.19	-755.42	1060.40	0.21	-0.20	0.68	MWD
3970.00	1.44	330.76	3748.40	746.33	-756.83	1062.91	0.35	-0.27	8.37	MWD
4064.00	1.31	341.14	3842.38	748.38	-757.75	1065.00	0.30	-0.14	11.04	MWD
4159.00	1.38	336.76	3937.35	750.46	-758.56	1067.03	0.13	0.07	-4.61	MWD
4253.00	1.69	350.14	4031.32	752.86	-759.24	1069.20	0.50	0.33	14.23	MWD
4347.00	1.44	356.64	4125.28	755.41	-759.55	1071.19	0.33	-0.27	6.91	MWD
4441.00	1.19	355.89	4219.26	757.56	-759.69	1072.80	0.27	-0.27	-0.80	MWD
4537.00	1.31	8.26	4315.24	759.64	-759.60	1074.19	0.31	0.12	12.89	MWD
4632.00	0.88	11.39	4410.22	761.43	-759.30	1075.23	0.46	-0.45	3.29	MWD
4728.00	0.56	1.26	4506.21	762.62	-759.14	1075.95	0.36	-0.33	-10.55	MWD
4821.00	0.56	352.76	4599.21	763.53	-759.19	1076.61	0.09	0.00	-9.14	MWD
4916.00	0.63	347.76	4694.20	764.50	-759.36	1077.41	0.09	0.07	-5.26	MWD
5013.00	0.75	339.51	4791.19	765.61	-759.69	1078.43	0.16	0.12	-8.51	MWD
5109.00	0.69	346.51	4887.19	766.76	-760.05	1079.49	0.11	-0.06	7.29	MWD
5206.00	0.56	341.76	4984.18	767.78	-760.33	1080.41	0.14	-0.13	-4.90	MWD
5301.00	0.56	348.51	5079.18	768.68	-760.57	1081.20	0.07	0.00	7.11	MWD
5397.00	0.56	349.14	5175.17	769.60	-760.75	1081.98	0.01	0.00	0.66	MWD
5493.00	0.69	345.89	5271.17	770.62	-760.98	1082.85	0.14	0.14	-3.39	MWD
5586.00	0.94	336.01	5364.16	771.86	-761.43	1084.04	0.31	0.27	-10.62	MWD
5638.00	0.75	347.64	5416.15	772.58	-761.68	1084.72	0.49	-0.37	22.37	MWD
5740.00	0.63	344.89	5518.14	773.78	-761.97	1085.76	0.12	-0.12	-2.70	MWD
5876.00	0.56	131.26	5654.14	774.06	-761.66	1085.74	0.84	-0.05	107.63	MWD



Weatherford International, Inc.

Survey Report



Company: WILLIAMS PRODUCTION	Date: 7/9/2008	Time: 14:10:27	Page: 2
Field: San Juan County, NM (NAD 83)	Co-ordinate(NE) Reference:	Site: Rosa Unit 88C, True North	
Site: Rosa Unit 88C	Vertical (TVD) Reference:	SITE 6232.0	
Well: Rosa Unit 88C	Section (VS) Reference:	Well (0.00N,0.00E,314.33Azi)	
Wellpath: ST 00	Survey Calculation Method:	Minimum Curvature	Db: Sybase

Survey: ST00 SVY

MD ft	Incl deg	Azim deg	TVD ft	+N/-S ft	+E/-W ft	VS ft	DLS deg/100ft	Build deg/100ft	Turn deg/100ft	Tool/Comment
5972.00	0.56	359.76	5750.14	774.22	-761.31	1085.60	1.06	0.00	-136.98	MWD
6069.00	0.44	11.64	5847.13	775.06	-761.24	1086.14	0.16	-0.12	12.25	MWD
6165.00	0.38	15.51	5943.13	775.73	-761.08	1086.49	0.07	-0.06	4.03	MWD
6261.00	0.31	0.88	6039.13	776.29	-760.99	1086.82	0.12	-0.07	-15.24	MWD
6357.00	0.19	353.64	6135.13	776.71	-761.00	1087.12	0.13	-0.12	-7.54	MWD
6453.00	0.44	21.01	6231.13	777.21	-760.89	1087.39	0.30	0.26	28.51	MWD
6548.00	0.06	357.26	6326.13	777.60	-760.76	1087.57	0.41	-0.40	-25.00	MWD
6643.00	0.06	252.89	6421.13	777.64	-760.81	1087.63	0.10	0.00	-109.86	MWD
6738.00	0.06	227.51	6516.13	777.59	-760.89	1087.66	0.03	0.00	-26.72	MWD
6835.00	0.19	209.64	6613.13	777.42	-761.01	1087.62	0.14	0.13	-18.42	MWD
6932.00	0.38	198.89	6710.13	776.97	-761.19	1087.44	0.20	0.20	-11.08	MWD
7027.00	0.31	197.87	6805.12	776.43	-761.37	1087.19	0.07	-0.07	-1.07	MWD
7123.00	0.19	187.14	6901.12	776.02	-761.47	1086.98	0.13	-0.12	-11.18	MWD
7218.00	0.31	170.39	6996.12	775.61	-761.45	1086.68	0.15	0.13	-17.63	MWD
7315.00	0.31	161.01	7093.12	775.11	-761.32	1086.23	0.05	0.00	-9.67	MWD
7649.00	2.75	11.76	7427.00	782.10	-759.39	1089.74	0.90	0.73	-44.69	MWD
7681.00	2.25	12.76	7458.97	783.46	-759.10	1090.48	1.57	-1.56	3.12	MWD
7712.00	2.44	9.26	7489.95	784.71	-758.86	1091.18	0.77	0.61	-11.29	MWD
7743.00	2.81	1.89	7520.91	786.12	-758.73	1092.07	1.61	1.19	-23.77	MWD
7775.00	2.88	13.26	7552.87	787.68	-758.52	1093.01	1.77	0.22	35.53	MWD
7838.00	3.13	12.39	7615.79	790.90	-757.78	1094.74	0.40	0.40	-1.38	MWD
7869.00	3.00	22.64	7646.74	792.48	-757.29	1095.49	1.81	-0.42	33.06	MWD
7901.00	2.88	31.76	7678.70	793.94	-756.54	1095.97	1.51	-0.37	28.50	MWD
7932.00	2.69	34.26	7709.67	795.20	-755.73	1096.27	0.73	-0.61	8.06	MWD
7966.00	3.31	31.64	7743.62	796.69	-754.76	1096.62	1.87	1.82	-7.71	MWD
7995.00	2.75	36.01	7772.58	797.97	-753.91	1096.91	2.09	-1.93	15.07	MWD
8026.00	2.06	40.01	7803.55	799.00	-753.12	1097.06	2.29	-2.23	12.90	MWD
8057.00	1.31	54.67	7834.54	799.63	-752.47	1097.04	2.77	-2.42	47.29	LAST SVY @ 8057' MD
8082.00	0.71	66.49	7859.53	799.86	-752.10	1096.93	2.53	-2.40	47.28	PROJ TO BIT

Annotation

MD ft	TVD ft	
3659.00	3437.62	TIE ON LAST SVY
8057.00	7834.54	LAST SVY @ 8057' MD
8082.00	7859.53	PROJ TO BIT