

District I
1625 N French Dr, Hobbs, NM 88240
District II
1301 W. Grand Avenue, Artesia, NM 88210
District III
1000 Rio Brazos Road, Aztec, NM 87410
District IV
1220 S. St. Francis Dr, Santa Fe, NM 87505

State of New Mexico
Energy Minerals and Natural Resources
Department
Oil Conservation Division
1220 South St. Francis Dr.
Santa Fe, NM 87505

Form C-144
June 16, 2008

For temporary pits, closed-loop systems, and below-grade tanks, submit to the appropriate NMOCD District Office.
For permanent pits and exceptions submit to the Santa Fe Environmental Bureau office and provide a copy to the appropriate NMOCD District Office.

**Pit, Closed-Loop System, Below-Grade Tank, or
Proposed Alternative Method Permit or Closure Plan Application**

Type of action: ☒ Permit of a pit, closed-loop system, below-grade tank, or proposed alternative method
☐ Closure of a pit, closed-loop system, below-grade tank, or proposed alternative method

Instructions: Please submit one application (Form C-144) per individual pit, closed-loop system, below-grade tank or alternative request

Please be advised that approval of this request does not relieve the operator of liability should operations result in pollution of surface water, ground water or the environment. Nor does approval relieve the operator of its responsibility to comply with any other applicable governmental authority's rules, regulations or ordinances.

Operator: SG Interests I, Ltd. OGRID #: NA
Address: PO Box 2677, Durango, Colorado 81302
Facility or well name: Federal 21-6-26 #1
API Number: 30-043-21062 OCD Permit Number: None
U/L or Qtr/Qtr G Section 26 Township 21N Range 06W County: Sandoval
Center of Proposed Design: Latitude 36.02433*N Longitude 107.54419*W NAD: ☒ 1927 ☐ 1983
Surface Owner: ☒ Federal ☐ State ☐ Private ☐ Tribal Trust or Indian Allotment

ROVD JUL 18 '08
OIL CONG. DIV.
DIST. 3

☒ **Pit:** Subsection F or G of 19.15.17.11 NMAC
Temporary: ☒ Drilling ☐ Workover
☐ Permanent ☐ Emergency ☐ Cavitation
☒ Lined ☐ Unlined
Liner type: Thickness 20 mil ☒ LLDPE ☐ HDPE ☐ PVC
☐ Other _____ ☐ String-Reinforced
Seams: ☐ Welded ☒ Factory ☐ Other _____
Volume: 1000 bbl Dimensions: L 75' x W 10' x D 10'

☐ **Closed-loop System:** Subsection H of 19.15.17.11 NMAC
☐ Drying Pad ☐ Tanks ☐ Haul-off Bins ☐ Other _____
☐ Lined ☐ Unlined
Liner type: Thickness _____ mil ☐ LLDPE ☐ HDPE ☐ PVC
☐ Other _____
Seams: ☐ Welded ☐ Factory ☐ Other _____
Volume: _____ bbl _____ yd³
Dimensions: Length _____ x Width _____

☐ **Below-grade tank:** Subsection I of 19.15.17.11 NMAC
Volume: _____ bbl
Type of fluid: _____
Tank Construction material: _____
☐ Secondary containment with leak detection
☐ Visible sidewalls, liner, 6-inch lift and automatic overflow shut-off
☐ Visible sidewalls and liner
☐ Visible sidewalls only
☐ Other _____
Liner type: Thickness _____ mil ☐ HDPE ☐ PVC
☐ Other _____

Fencing: Subsection D of 19.15.17.11 NMAC
☐ Chain link, six feet in height, two strands of barbed wire at top
☒ Four foot height, four strands of barbed wire evenly spaced between one and four feet
Netting: Subsection E of 19.15.17.11 NMAC
☐ Screen ☐ Netting ☐ Other _____
☐ Monthly inspections
Signs: Subsection C of 19.15.17.11 NMAC
☐ 12"x24", 2' lettering, providing Operator's name, site location, and emergency telephone numbers
☒ Signed in compliance with 19.15.3.103 NMAC

☐ **Alternative Method:**
Submittal of an exception request is required. Exceptions must be submitted to the Santa Fe Environmental Bureau office for consideration of approval.

Administrative Approvals and Exceptions:
Justifications and/or demonstrations of equivalency are required. Please refer to 19.15.17 NMAC for guidance.
Please check a box if one or more of the following is requested, if not leave blank:
☒ Administrative approval(s): Requests must be submitted to the appropriate division district or the Santa Fe Environmental Bureau office for consideration of approval.
☐ Exception(s): Requests must be submitted to the Santa Fe Environmental Bureau office for consideration of approval.

Siting Criteria (regarding permitting): 19.15.17.10 NMAC

Instructions: The applicant must demonstrate compliance for each siting criteria below in the application. Recommendations of acceptable source material are provided below. Requests regarding changes to certain siting criteria may require administrative approval from the appropriate district office or may be considered an exception which must be submitted to the Santa Fe Environmental Bureau office for consideration of approval. Applicant must attach justification for request. Please refer to 19.15.17.10 NMAC for guidance. Siting criteria does not apply to drying pads or above-grade tanks associated with a closed-loop system.

Ground water is less than 50 feet below the bottom of the temporary pit, permanent pit, or below-grade tank.

- NM Office of the State Engineer - iWATERS database search; USGS; Data obtained from nearby wells

☐ Yes ☒ No

Within 300 feet of a continuously flowing watercourse, or 200 feet of any other watercourse, lakebed, sinkhole, or playa lake (measured from the ordinary high-water mark).

- Topographic map; Visual inspection (certification) of the proposed site

☐ Yes ☒ No

Within 300 feet from a permanent residence, school, hospital, institution, or church in existence at the time of initial application. (Applies to temporary, emergency, or cavitation pits and below-grade tanks)

- Visual inspection (certification) of the proposed site; Aerial photo; Satellite image

☐ Yes ☒ No
☐ NA

Within 1000 feet from a permanent residence, school, hospital, institution, or church in existence at the time of initial application. (Applies to permanent pits)

- Visual inspection (certification) of the proposed site; Aerial photo; Satellite image

☐ Yes ☐ No
☒ NA

Within 500 horizontal feet of a private, domestic fresh water well or spring that less than five households use for domestic or stock watering purposes, or within 1000 horizontal feet of any other fresh water well or spring, in existence at the time of initial application.

- NM Office of the State Engineer - iWATERS database search; Visual inspection (certification) of the proposed site

☐ Yes ☒ No

Within incorporated municipal boundaries or within a defined municipal fresh water well field covered under a municipal ordinance adopted pursuant to NMSA 1978, Section 3-27-3, as amended.

- Written confirmation or verification from the municipality; Written approval obtained from the municipality

☐ Yes ☒ No

Within 500 feet of a wetland.

- US Fish and Wildlife Wetland Identification map; Topographic map; Visual inspection (certification) of the proposed site

☐ Yes ☒ No

Within the area overlying a subsurface mine.

- Written confirmation or verification or map from the NM EMNRD-Mining and Mineral Division

☐ Yes ☒ No

Within an unstable area.

- Engineering measures incorporated into the design; NM Bureau of Geology & Mineral Resources; USGS; NM Geological Society; Topographic map

☐ Yes ☒ No

Within a 100-year floodplain.

- FEMA map

☐ Yes ☒ No

Temporary Pits, Emergency Pits, and Below-grade Tanks Permit Application Attachment Checklist: Subsection B of 19.15.17.9 NMAC

Instructions: Each of the following items must be attached to the application. Please indicate, by a check mark in the box, that the documents are attached.

- ☐ Hydrogeologic Report (Below-grade Tanks) - based upon the requirements of Paragraph (4) of Subsection B of 19.15.17.9 NMAC
☒ Hydrogeologic Data (Temporary and Emergency Pits) - based upon the requirements of Paragraph (2) of Subsection B of 19.15.17.9 NMAC
☒ Siting Criteria Compliance Demonstrations - based upon the appropriate requirements of 19.15.17.10 NMAC
☒ Design Plan - based upon the appropriate requirements of 19.15.17.11 NMAC
☒ Operating and Maintenance Plan - based upon the appropriate requirements of 19.15.17.12 NMAC
☒ Closure Plan - based upon the appropriate requirements of Subsection C of 19.15.17.9 NMAC and 19.15.17.13 NMAC

☐ Previously Approved Design (attach copy of design) API Number: _____ or Permit Number: _____

Closed-loop Systems Permit Application Attachment Checklist: Subsection B of 19.15.17.9 NMAC

Instructions: Each of the following items must be attached to the application. Please indicate, by a check mark in the box, that the documents are attached.

- ☐ Geologic and Hydrogeologic Data (required for on-site closure) - based upon the requirements of Paragraph (3) of Subsection B of 19.15.17.9 NMAC
☐ Siting Criteria Compliance Demonstrations (required for on-site closure) - based upon the appropriate requirements of 19.15.17.10 NMAC
☐ Design Plan - based upon the appropriate requirements of 19.15.17.11 NMAC
☐ Operating and Maintenance Plan - based upon the appropriate requirements of 19.15.17.12 NMAC
☐ Closure Plan - based upon the appropriate requirements of Subsection C of 19.15.17.9 NMAC and 19.15.17.13 NMAC

NMAC

☐ Previously Approved Design (attach copy of design) API Number: _____

Permanent Pits Permit Application Checklist: Subsection B of 19.15.17.9 NMAC

Instructions: Each of the following items must be attached to the application. Please indicate, by a check mark in the box, that the documents are attached.

- ☐ Hydrogeologic Report - based upon the requirements of Paragraph (1) of Subsection B of 19.15.17.9 NMAC
☐ Siting Criteria Compliance Demonstrations - based upon the appropriate requirements of 19.15.17.10 NMAC
☐ Climatological Factors Assessment
☐ Certified Engineering Design Plans - based upon the appropriate requirements of 19.15.17.11 NMAC
☐ Dike Protection and Structural Integrity Design - based upon the appropriate requirements of 19.15.17.11 NMAC
☐ Leak Detection Design - based upon the appropriate requirements of 19.15.17.11 NMAC
☐ Liner Specifications and Compatibility Assessment - based upon the appropriate requirements of 19.15.17.11 NMAC
☐ Quality Control/Quality Assurance Construction and Installation Plan
☐ Operating and Maintenance Plan - based upon the appropriate requirements of 19.15.17.12 NMAC
☐ Freeboard and Overtopping Prevention Plan - based upon the appropriate requirements of 19.15.17.11 NMAC
☐ Nuisance or Hazardous Odors, including H₂S, Prevention Plan
☐ Emergency Response Plan
☐ Oil Field Waste Stream Characterization
☐ Monitoring and Inspection Plan
☐ Erosion Control Plan
☐ Closure Plan - based upon the appropriate requirements of Subsection C of 19.15.17.9 NMAC and 19.15.17.13 NMAC

Proposed Closure: 19.15.17.13 NMAC

Type: ☒ Drilling ☐ Workover ☐ Emergency ☐ Cavitation ☐ Permanent Pit ☐ Below-grade Tank ☐ Closed-loop System ☐ Alternative

Proposed Closure Method: ☐ Waste Excavation and Removal

☒ On-site Closure Method (only for temporary pits and closed-loop systems)

☐ In-place Burial ☐ On-site Trench Burial

☐ Alternative Closure Method (Exceptions must be submitted to the Santa Fe Environmental Bureau for consideration)

Siting Criteria (regarding on-site closure methods only): 19.15.17.10 NMAC

Instructions: Each siting criteria requires a demonstration of compliance in the closure plan. Recommendations of acceptable source material are provided below. Requests regarding changes to certain siting criteria may require administrative approval from the appropriate district office or may be considered an exception which must be submitted to the Santa Fe Environmental Bureau office for consideration of approval. Justifications and/or demonstrations of equivalency are required. Please refer to 19.15.17.10 NMAC for guidance.

Ground water is less than 50 feet below the bottom of the buried waste.

- NM Office of the State Engineer - iWATERS database search; USGS; Data obtained from nearby wells

☐ Yes ☒ No
☐ NA

Ground water is between 50 and 100 feet below the bottom of the buried waste

- NM Office of the State Engineer - iWATERS database search; USGS; Data obtained from nearby wells

☐ Yes ☒ No
☐ NA

Ground water is more than 100 feet below the bottom of the buried waste.

- NM Office of the State Engineer - iWATERS database search; USGS; Data obtained from nearby wells

☒ Yes ☐ No
☐ NA

Within 300 feet of a continuously flowing watercourse, or 200 feet of any other watercourse, lakebed, sinkhole, or playa lake (measured from the ordinary high-water mark).

- Topographic map; Visual inspection (certification) of the proposed site

☐ Yes ☒ No

Within 300 feet from a permanent residence, school, hospital, institution, or church in existence at the time of initial application.

- Visual inspection (certification) of the proposed site; Aerial photo; Satellite image

☐ Yes ☒ No

Within 500 horizontal feet of a private, domestic fresh water well or spring that less than five households use for domestic or stock watering purposes, or within 1000 horizontal feet of any other fresh water well or spring, in existence at the time of initial application.

- NM Office of the State Engineer - iWATERS database; Visual inspection (certification) of the proposed site

☐ Yes ☒ No

Within incorporated municipal boundaries or within a defined municipal fresh water well field covered under a municipal ordinance adopted pursuant to NMSA 1978, Section 3-27-3, as amended.

- Written confirmation or verification from the municipality; Written approval obtained from the municipality

☐ Yes ☒ No

Within 500 feet of a wetland.

- US Fish and Wildlife Wetland Identification map; Topographic map; Visual inspection (certification) of the proposed site

☐ Yes ☒ No

Within the area overlying a subsurface mine.

- Written confirmation or verification or map from the NM EMNRD-Mining and Mineral Division

☐ Yes ☒ No

Within an unstable area.

- Engineering measures incorporated into the design; NM Bureau of Geology & Mineral Resources; USGS; NM Geological Society; Topographic map

☐ Yes ☒ No

Within a 100-year floodplain.

- FEMA map

☐ Yes ☒ No

Waste Excavation and Removal Closure Plan Checklist: (19.15.17.13 NMAC) *Instructions: Each of the following items must be attached to the closure plan. Please indicate, by a check mark in the box, that the documents are attached.*

- ☐ Protocols and Procedures - based upon the appropriate requirements of 19.15.17.13 NMAC
- ☐ Confirmation Sampling Plan (if applicable) - based upon the appropriate requirements of Subsection F of 19.15.17.13 NMAC
- ☐ Disposal Facility Name and Permit Number (for liquids, drilling fluids and drill cuttings)
- ☐ Soil Backfill and Cover Design Specifications - based upon the appropriate requirements of Subsection H of 19.15.17.13 NMAC
- ☐ Re-vegetation Plan - based upon the appropriate requirements of Subsection I of 19.15.17.13 NMAC
- ☐ Site Reclamation Plan - based upon the appropriate requirements of Subsection G of 19.15.17.13 NMAC

Waste Removal Closure For Closed-loop Systems That Utilize Haul-off Bins Only: (19.15.17.13.D NMAC) *Instructions: Please indentify the facility or facilities for the disposal of liquids, drilling fluids and drill cuttings.*

Disposal Facility Name: _____ Disposal Facility Permit Number: _____

On-Site Closure Plan Checklist: (19.15.17.13 NMAC) *Instructions: Each of the following items must be attached to the closure plan. Please indicate, by a check mark in the box, that the documents are attached.*

- ☒ Siting Criteria Compliance Demonstrations - based upon the appropriate requirements of 19.15.17.10 NMAC
- ☐ Proof of Surface Owner Notice - based upon the appropriate requirements of Subsection F of 19.15.17.13 NMAC
- ☐ Construction and Design of Burial Trench (if applicable) based upon the appropriate requirements of 19.15.17.11 NMAC
- ☒ Protocols and Procedures - based upon the appropriate requirements of 19.15.17.13 NMAC
- ☒ Confirmation Sampling Plan (if applicable) - based upon the appropriate requirements of Subsection F of 19.15.17.13 NMAC
- ☐ Waste Material Sampling Plan - based upon the appropriate requirements of Subsection F of 19.15.17.13 NMAC
- ☒ Disposal Facility Name and Permit Number (for liquids, drilling fluids and drill cuttings or in case on-site closure standards cannot be achieved)
- ☒ Soil Cover Design - based upon the appropriate requirements of Subsection H of 19.15.17.13 NMAC
- ☒ Re-vegetation Plan - based upon the appropriate requirements of Subsection I of 19.15.17.13 NMAC
- ☒ Site Reclamation Plan - based upon the appropriate requirements of Subsection G of 19.15.17.13 NMAC

Operator Application Certification:

I hereby certify that the information submitted with this application is true, accurate and complete to the best of my knowledge and belief.

Name (Print): William Schwab III Title: Registered Agent for SG Interests I, Ltd

Signature:  Date: 07/17/2008

e-mail address: tripp@nikaenergy.com Telephone: 970-259-2701

OCD Approval: ☒ Permit Application (including closure plan) ☐ Closure Plan (only)

OCD Representative Signature:  Approval Date: 7-28-08

Title: Enviro / spec OCD Permit Number: _____

Closure Report (required within 60 days of closure completion): Subsection K of 19.15.17.13 NMAC

☐ Closure Completion Date: _____

Closure Method:

- ☐ Waste Excavation and Removal ☐ On-Site Closure Method ☐ Alternative Closure Method
- ☐ If different from approved plan, please explain.

Closure Report Attachment Checklist: *Instructions: Each of the following items must be attached to the closure report. Please indicate, by a check mark in the box, that the documents are attached.*

- ☐ Proof of Closure Notice
- ☐ Proof of Deed Notice (if applicable)
- ☐ Plot Plan
- ☐ Confirmation Sampling Analytical Results
- ☐ Waste Material Sampling Analytical Results
- ☐ Disposal Facility Name and Permit Number
- ☐ Soil Backfilling and Cover Installation
- ☐ Re-vegetation Application Rates and Seeding Technique
- ☐ Site Reclamation (Photo Documentation)

On-site Closure Location: Latitude _____ Longitude _____ NAD: ☐ 1927 ☐ 1983

Operator Closure Certification:

I hereby certify that the information and attachments submitted with this closure report is true, accurate and complete to the best of my knowledge and belief. I also certify that the closure complies with all applicable closure requirements and conditions specified in the approved closure plan.

Name (Print): _____ Title: _____

Signature: _____ Date: _____

e-mail address: _____ Telephone: _____

ADMINISTRATIVE APPROVAL REQUEST

RE: Federal 21-7-26 #1 Temporary Drilling Pit Design

SGI is requesting administrative approval for the current pit design as applied for and approved by BLM and NMOCD under the current Federal APD. This design was applied for prior to the new pit rule effective date but was approved post effective date.

The design submitted is the same design used to drill all previous wells in this area without incident negatively affecting the Environment, the Health and Welfare of the surrounding residents, and the employees and contractors of SGI.

The request is for a variance concerning the rise to run slope of the pit walls. The current pit was designed with a 2' rise to 1' run in order to reduce the footprint of the drilling pad as requested by the BLM. All other new temporary drilling pit design criteria will be followed.

A 10'W x 10'H x 75'L pit with 1'H:2'V walls has a 2,271 Bbl capacity full. Subtracting a 2' freeboard there is a 1,676 Bbl capacity. This is 678 Bbls or 68% additional capacity of the 1000 Bbls needed to drill this well.

To address the issue of egress from the pit in case of an accidental ingress, a rope ladder will be installed. The rope ladder will be anchored at the surface outside the pit liner anchor ditch and will extend to the bottom of the pit. This will allow any personnel to escape from the pit. Please note: In the several years we have worked in the industry (30+ years) we have never seen or heard of any accidental fatalities concerning drowning in reserve pits.

Future temporary drilling pits will be applied for and constructed per the new pit rule guidelines.

Township: Range: Sections:
 NAD27 X: Y: Zone: CentralEastWest Search Radius:
 County: SABernalilloCatronChavesCibolaColfaxCurryDona AnaDe
 BacaEddyGrantGuadalupeHardingHidalgoLos
 AlamosLeaLincolnLunaMcKinleyMoraOteroQuayRio ArribaRooseveltSandovalSanta
 FeSierraSan JuanSan MiguelSocorroTaosTorranceUnionValencia Basin: A(
 Animas)B(Bluewater)C(Carlsbad)CC(Curry County)CD(CLOVERDALE)CL(CAUSEY
 LINGO)CP(Capitan)CR(Canadian River)CT(CLAYTON)E(Estancia)FS(Fort
 Sumner)G(Gallup)GSF(Gila-San Francisco)H(Hondo)HA(HACHITA)HC(HAGERMAN
 CANAL)HS(Hot Springs)HU(Hueco)J(Jal)L(Lea County)LA(Las Animas Creek)LRG(
 Lower Rio Grande)LV(Lordsburg Valley)M(Mimbres)MR(MOUNT RILEY)NH(
 Nutt-Hockett)P(Portales)PL(Playas)PN(Penasco)RA(Roswell Artesian)RG(Rio
 Grande)S(Sandia)SD(Surface Declaration)SJ(San Juan)SP(Surface Permit)SS(
 San Simon)ST(SALT BASIN)T(Tularosa)TU(Tucumcari)UP(Upper Pecos)VV(Virden
 Valley)Y(YAQUI) Number: Suffix:
 Owner Name: (First) (Last) Non-Domestic Domestic All
 POD / Surface Data ReportAvg Depth to Water ReportWater Column Report

AVERAGE DEPTH OF WATER REPORT 06/24/2008

Bsn	Tws	Rng	Sec	Zone	X	Y	wells	(Depth Water in Feet)		
								Min	Max	Avg
SJ	21N	07W	07				1	240	240	240

Record Count: 1

This is the only information available In T21N R6W.

There is no information available in any adjacent sections to sec 26, T21N, R7W.

Send To Printer Back To TerraServer Change to 11x17 Print Size Show Grid Lines Change to Landscape
USGS 132 km NE of Albuquerque, New Mexico, United States 13 Oct 1997

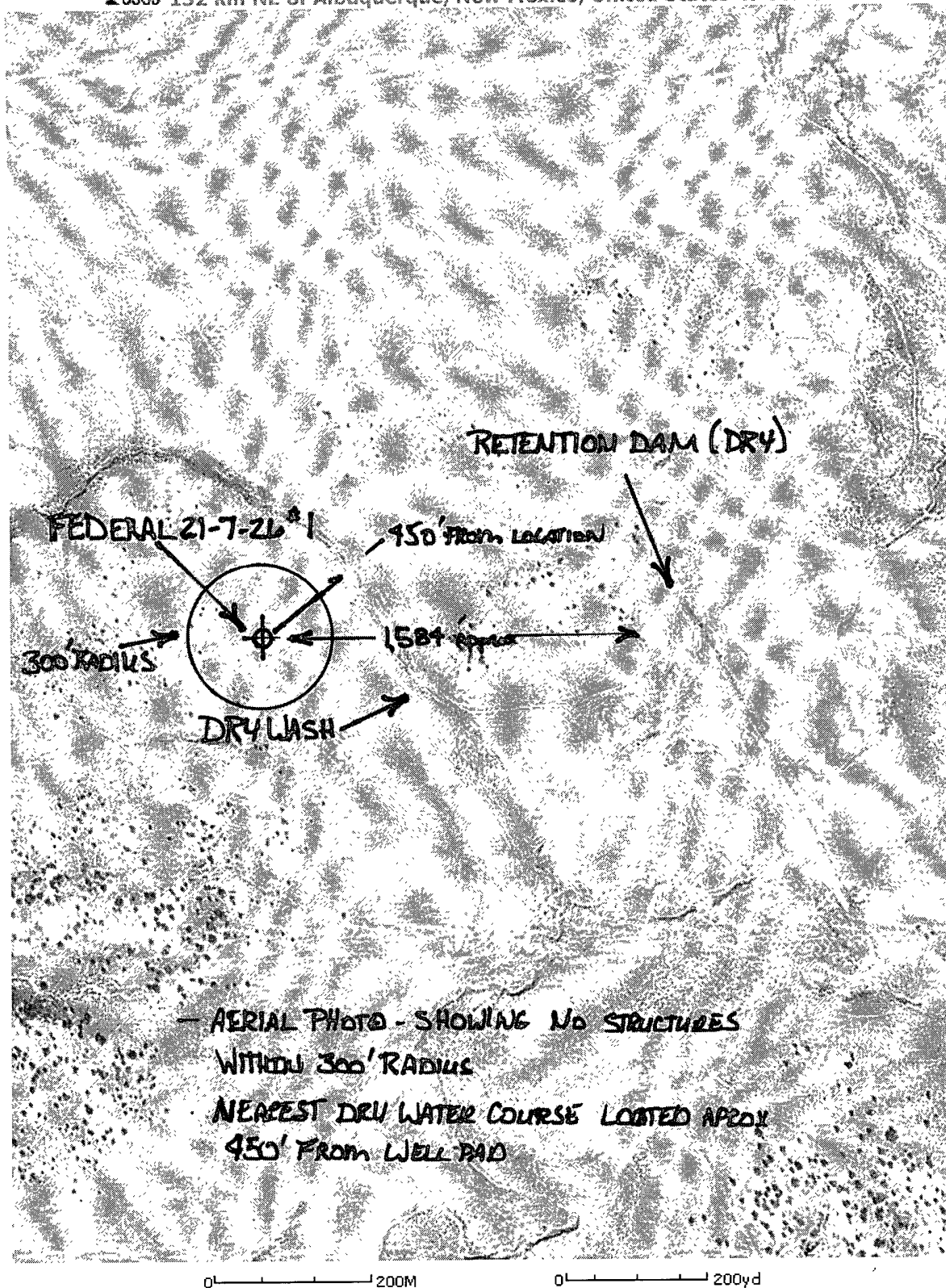
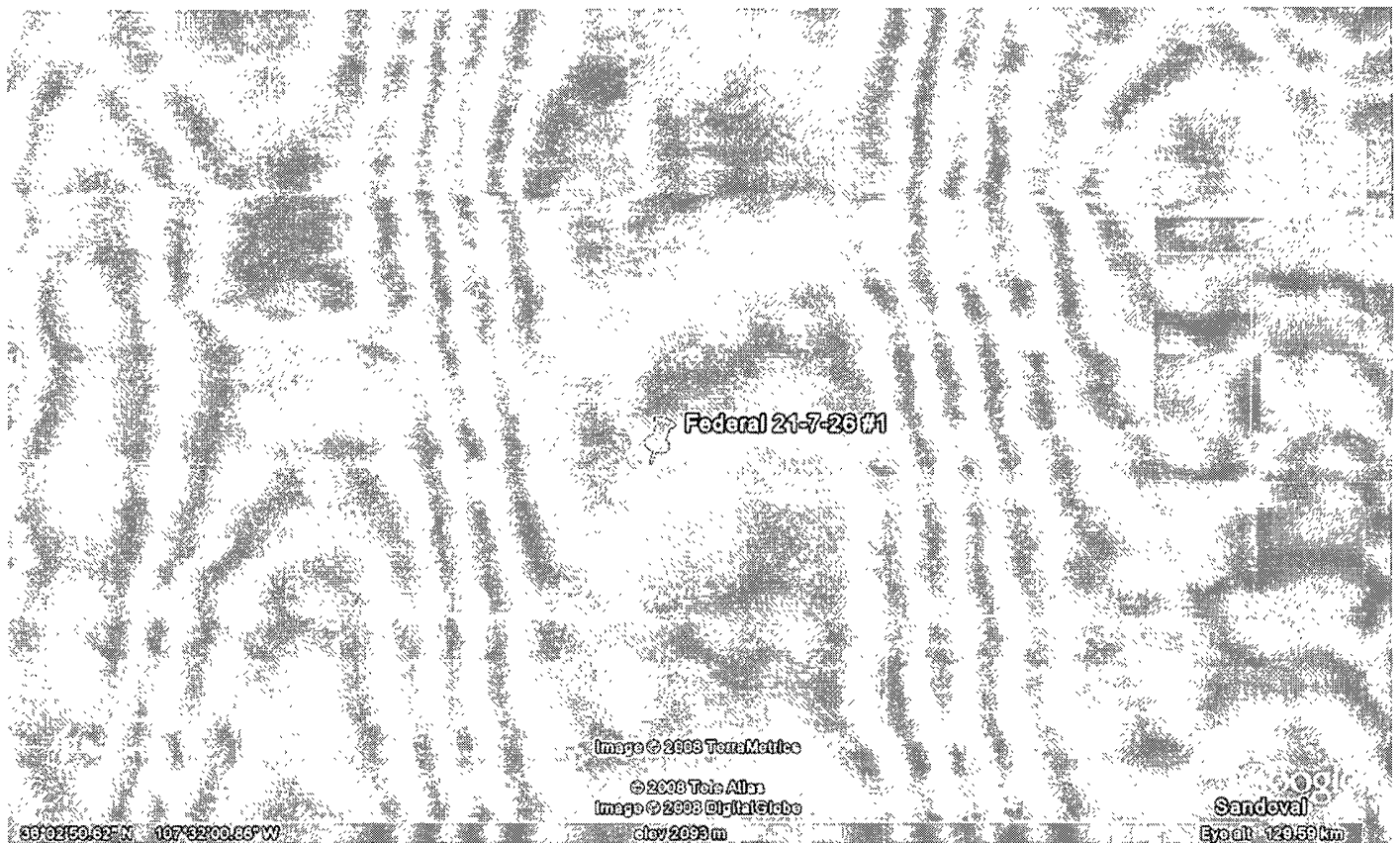


Image courtesy of the U.S. Geological Survey
© 2004 Microsoft Corporation. Terms of Use Privacy Statement



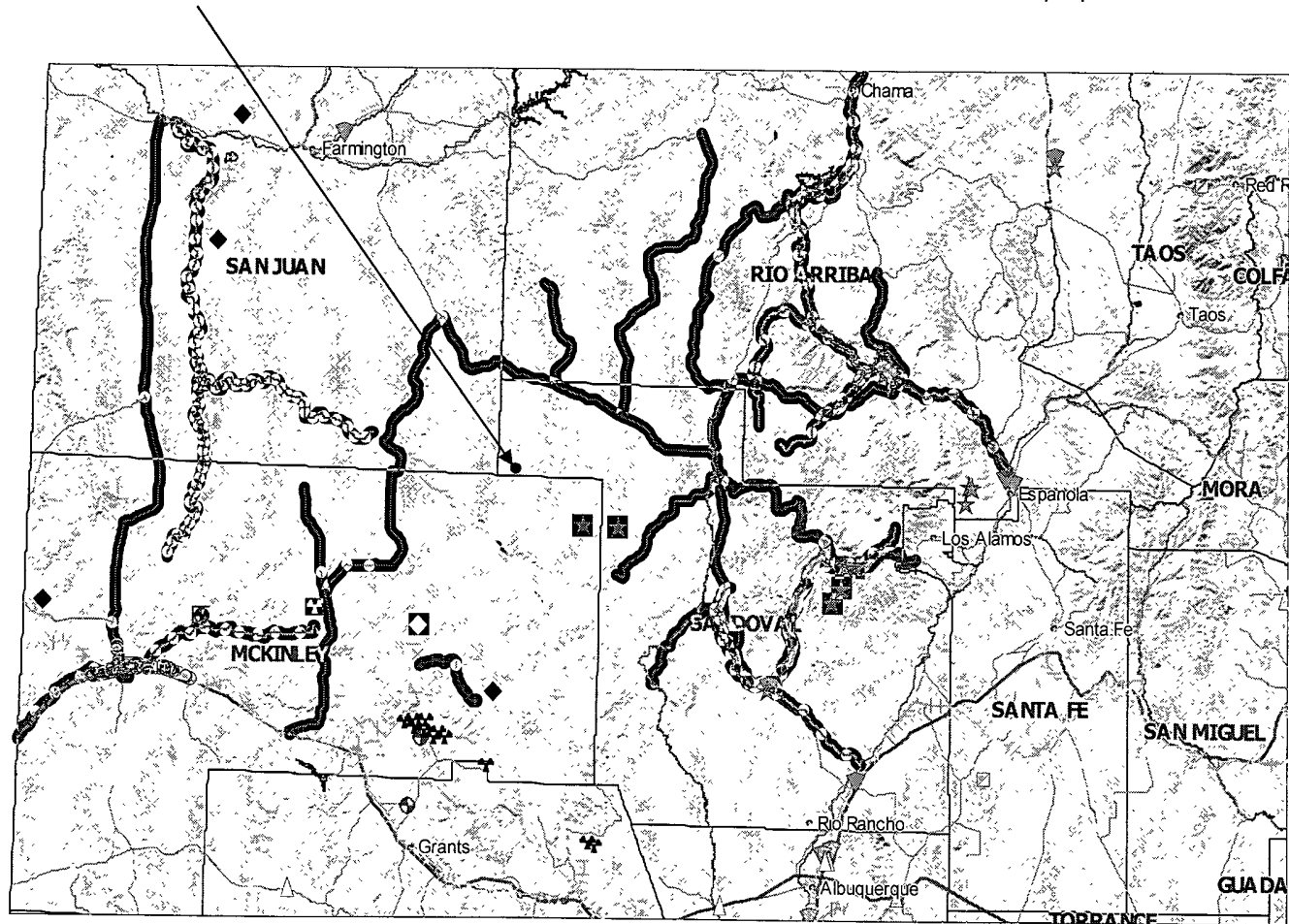
- Wetlands Not Available Digitally
- THERE IS NO WETLANDS WITH IN 1 MILE RADIUS OF PROPOSED PIT LOCATION

Map of Mining Sites in Area of Interest

Map from NM-EMNRD Website

Location of Proposed CBM Well.

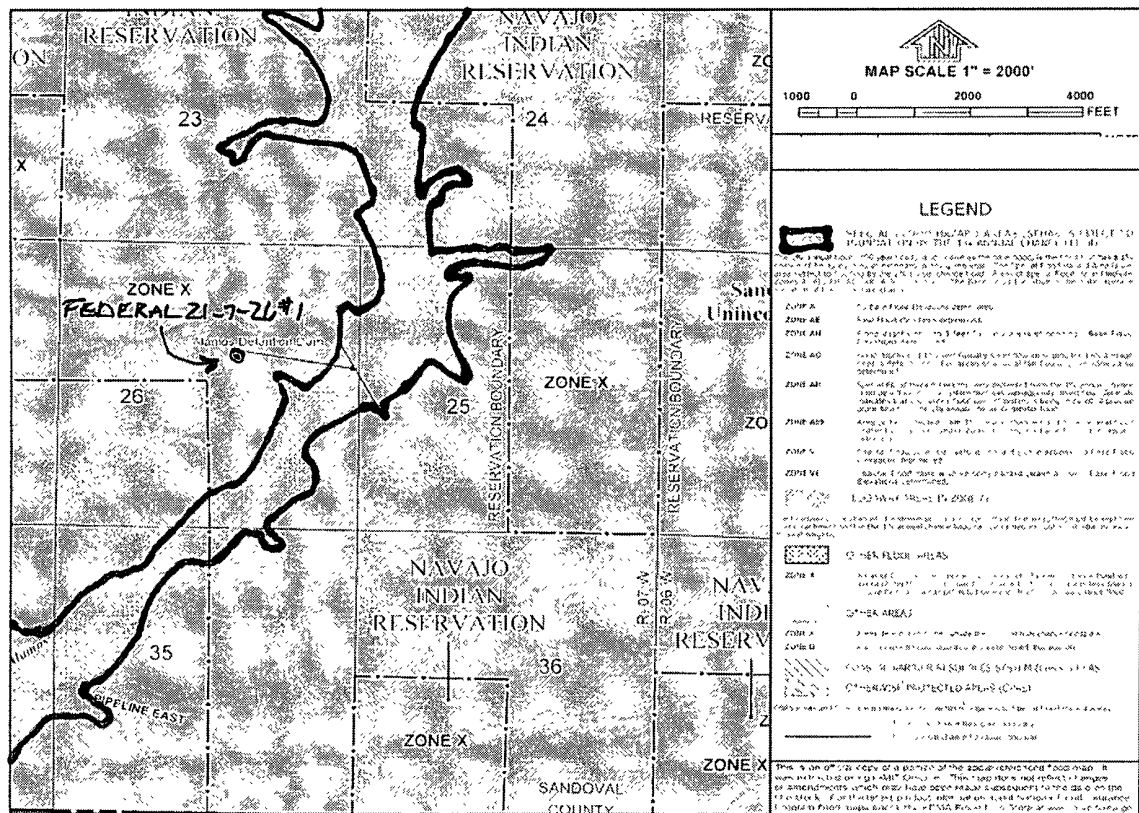
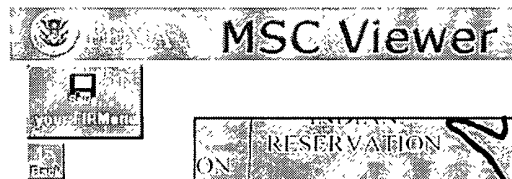
There are no underground mines around or under the proposed well.



Unstable Area

RE: Federal 21-7-26 #1

The well pad is not located near any surface mines or over any subsurface mines. The Soil consists of a clay sand mixture. The location has a 10' cut and a 10' fill. The temporary drilling pit will be located in the cut of the cut side of the location.



☐ - DENOTES THE 100 YR FLOOD PLAIN EVENT

HYDROGEOLOGIC DATA for the Federal 21-7-26 #1

The proposed well, Federal 21-7-26 #1, is located in the SWNE quarter-quarter of section 26 T21N- R7W. Only one well in this Township was identified using the iWaters Database from the Office of the State Engineers in section 7 (approximately 5 miles to the northwest). The following water parameters were determined for this well:

Average Well Depth:	680 feet
Average Depth of Water:	240 feet
Average Water Column:	440 feet

Additional wells in the surrounding townships were also included with the following results:

Average Well Depth:	276 feet
Average Depth of Water:	137 feet
Average Water Column:	407 feet

The closest well from the surrounding townships was approximately 4.5 miles to the southwest in section 16 of 20N 7W.

The aquifer in this area of the San Juan Basin primarily consists of the Ojo Alamo Sandstone. The top of the Ojo Alamo at this drill site is estimated to be approximately 253 feet below the surface. The Ojo Alamo is a permeable conglomerate and medium to very coarse sandstone interlayered with relatively impermeable shale. This aquifer contains fresh to moderately saline water. Dissolved-solids concentrations generally increase along the groundwater flow path from less than 1,000 milligrams per liter near recharge areas to about 4,000 as the formation is deeper into the basin.

Reference:

GROUND WATER ATLAS of the UNITED STATES

Arizona, Colorado, New Mexico, Utah, HA 730-C, USGS, S.G. Robson and E.R. Banta, 1995

iWaters (Waters Database), New Mexico Office of the State Engineer, 2007

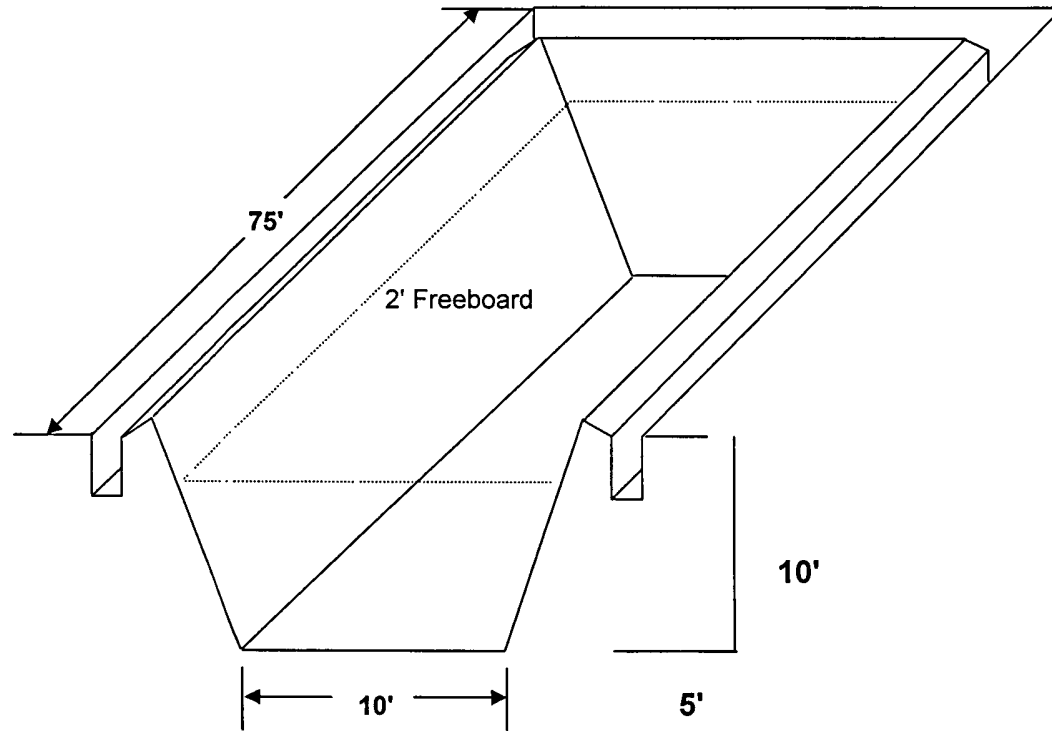
SG Interests I, Ltd.

Temporary Pit Design & Construction Plan

Re: Federal 21-7-26 #1

- 1 - SG Interests will design and construct a temporary pit to contain liquids, solids, prevent contamination of fresh water, and protect public health and environment.
- 2 - Prior to constructing the pit, topsoil will be stockpiled per APD for later use in reclamation.
- 3 - SGI will have sign on location in compliance with 19.15.3.103 NMAC.
- 4 - SGI shall construct all new fences utilizing 48" hog wire on bottom with a single strand of barbed wire on top. T-posts will be installed a minimum of every 12 feet and corners will be braced. Temporary pits will be fenced at all times except during drilling or workover operations when the rig side of the fence will be temporarily removed for operational purposes.
- 5 - SGI shall construct the temporary pit so the foundation and interior slopes are compact, free of rocks, debris, sharp edges and irregularities to prevent liner failure.
- 6 - SGI shall construct the pit so the slopes are no steeper than two horizontal feet to one vertical foot. Any other design will be submitted for administrative approval. *The Federal 21-7-26 #1 has submitted for administrative approval a slope of one horizontal foot to two vertical feet.*
- 7 - All temporary pits will be lined with a 20 mil string reinforced, LLDPE liner, complying with EPA SW-846 method 9090A requirements.
- 8 - Geotextile will be installed beneath the liner if integrity will be compromised from sharp edges or irregularities.
- 9 - Liner will be anchored in the bottom of a compacted earth filled trench at least eighteen inches deep.
- 10 - Liner seams will be minimized and oriented up and down, not cross slope. Factory seams will be used wherever possible. Field seams will be overlapped four to six inches and welded by qualified personnel. Seams will be minimized in corners and irregularly shaped areas.
- 11 - The liner shall be protected from any fluid force through the use of mud pit slides or a manifold system.
- 12 - Diversion ditches and berms will be used to prevent natural runoff from entering pit.
- 13 - Pit volume will not exceed 10 acre feet, including freeboard.
- 14 - Temporary blow pits will be constructed to allow fluid discharged to unlined pit, as allowed by Rule 19.15.17.11.F.11, to gravity flow into lined pit.
- 15 - Freestanding liquids will not be allowed in unlined portion of a temporary blow pit.

Temporary Pit Design - Federal 21-7-26 #1.xls



Pit to be lined with 20 mil LLDPE Material

Liner will be anchored in anchor ditch

SG Interests I, Ltd.

Temporary Pit - Maintenance & Operating Plan

Re: Federal 21-7-26 #1

- 1 - SG Interests will design and construct a temporary pit to contain liquids, solids, prevent contamination of fresh water, and protect public health and environment.
- 2 - SGI will dispose of drilling fluids at Basin Disposal Inc., Permit # NM-01-005.
- 3 - SGI will not dispose of or store any hazardous waste in any temporary pit.
- 4 - If the pit liner's integrity is compromised, or if any penetration of the liner occurs above the liquid surface, the NMOCD Aztec Division office will be notified by phone or e-mail within forty eight hours.
- 5 - If a leak develops below the liquid level SGI shall remove all liquids above the damaged liner within forty eight hours and repair the damage to the liner. For leaks less than 25 Bbls SGI shall notify the NMOCD Aztec office within forty eight hours of the discovery. For leaks greater than 25 Bbls SGI shall notify the NMOCD Aztec office within twenty four hours of the discovery. In addition verbal notification shall be given to the divisions Environmental Bureau Chief.
- 6 - The liner shall be protected from any fluid force through the use of mud pit slides or a manifold system.
- 7 - Diversion ditches and berms will be used to prevent natural runoff from entering pit.
- 8 - SGI shall immediately remove any visible layer of oil from the surface of the temporary pit. An oil absorbent boom will be used to contain and remove oil from the pits surface. An oil absorbent boom will be kept on-site until closure of pit.
- 9 - Only fluids generated during the drilling or completion process will be discharged into a temporary pit.
- 10 - The pit will be kept free of miscellaneous solid waste and or debris.
- 11 - During drilling or completion operations, SGI will inspect the temporary pit at least once daily to insure compliance with this plan. Inspections will be logged in the IADC reports and SGI daily drilling reports. These reports will be filed with the NMOCD Aztec Division office upon closure of the pit.
- 12 - After drilling or completion operations, SGI will inspect the temporary pit at least once weekly so long as liquids are present in the pit. Inspections will be logged as a continuation of the SGI daily drilling report and will be filed with the NMOCD Aztec Division office upon closure of the pit.
- 13 - The temporary pit shall always maintain a minimum of two feet of freeboard.
- 14 - Freestanding liquids will be removed from a temporary pit within 30 days from the date the drilling rig is released and removed as needed thereafter until the pit is closed.
- 15 - SGI will remove all freestanding liquids from a cavitation pit within 48 hours after completing a cavitation. SGI may request additional time to remove liquids from the NMOCD Aztec Division office if SGI is not able to remove liquids in 48 hours.

SG Interests I, Ltd.

Temporary Pit - Closure Plan

Re: Federal 21-7-26 #1

All closure activities will include proper documentation and be available for review upon request and will be submitted to the NMOCD Aztec Division office within 60 days of pit closure. Closure report will be filed on form C-144 and incorporate the following:

Details on capping and covering (where applicable)

Plot Plan (Pit Diagram)

Inspection Reports

Sampling Results

C-105

Copy of Deed Notice filed with County Clerk

- 1 - All freestanding liquids will be removed at the start of the pit closure process from the pit and disposed of in a division approved facility or recycle, re-use or reclaim the liquids in a manner that the appropriate division district office approves. SGI plans to dispose of drilling fluids at Basin Disposal Inc., Permit # NM-01-005, unless otherwise noted.
- 2 - The method of closure for all temporary pits will be on-site burial as long as all the criteria listed in sub-section B of 19.15.17.13 NMAC are met.
- 3 - The surface owner shall be notified of SGI closure plan using a means that provides proof of notice i.e., certified mail, return receipt requested or electronic mail with read receipt.
- 4 - Temporary pits will be closed, re-contoured, and re-seeded 6 months after drilling rig is released.
- 5 - "Notice of Closure" will be given to the NMOCD Aztec Division office within 72 hours of closure via electronic mail or verbally. The "Notification of Closure" will include:
 - i. Operators Name
 - ii. Location by Unit Letter, Section, Township, and Range
 - iii. Well Name and API number.
- 6 - A five point composite sample will be taken of the pit using sampling tools and tested per 19.15.17.13.B.1.b. NMAC. Maximum limits for on-site burial are listed below:

Components	Test Method	Limit (mg/kg)
Benzene	EPA SW-846 8021B or 8260B	0.2
BTEX	EPA SW 846 8021B or 8260B	50
TPH	EPA SW 846 418.1	2500
GRO/DRO	EPA SW 846 8015M	500
Chlorides	EPA 300.1	1000

In the event the criteria are not met all contents and remediation will be handled per 19.15.17.13.B.1 NMAC. If ground water is 50'-100' below the bottom of the buried waste all limits are the same except the chloride limit is reduced to 500 mg/kg.

The sampling can be taken prior to mixing but if the contents exceed the parameters then contents must be sampled after mixing and meet the criteria before closure.

- 7 - Pit contents shall be mixed with non waste containing earth material in order to achieve the solidification process. The solidification process will be accomplished using a combination of natural drying and mechanical mixing. Pit contents will be mixed with non waste, earth material to a consistency that is deemed safe and stable. The mixing ratio shall not exceed 3 parts clean soil to 1 part pit contents.
- 8 - Liner of temporary pit will be removed above "mud level" after stabilization. Liner will be cut and all excessive liner will be removed and taken to a licensed disposal facility.
- 9 - Upon completion of solidification and satisfactory test results the pit area will be backfilled and compacted with non-waste earth material. A minimum of four feet of cover with the top foot (or background thickness of topsoil whichever is greater) suitable to establish vegetation at the site.
- 10 - The pit cover will be re-contoured and re-vegetated complying with subsections G,H,&I of 19.15.17.13 NMAC.
- 11 - Notification will be sent to NMOCD Aztec Division office when reseedling is completed.
- 12 - SGI will seed the disturbed areas the first growing season after the operator closes the pit. Seeding will be accomplished by drilling on the contour whenever practical or by other division approved methods. APD stipulated seed mixes will be used on Federal lands. Vegetative cover will equal 70% of the native perennial vegetative cover (unimpacted) consisting of at least three native plant species, including at least one grass, but not including noxious weeds. Seed cover will be maintained thru two consecutive growing seasons. Repeat seeding or planting will be continued until successive vegetative growth occurs.
- 13 - The closed temporary pit will have a steel marker no less than four inches in diameter, extending four feet above mean ground level, extending and cemented in a hole three feet deep, in the center of the onsite burial upon completion of the closing. The marker will be permanently welded, stamped or engraved to include the operator name, lease name, well name and number, unit number, section, township, range, and indicator that the marker is an onsite burial location. SGI reserves the right to install a temporary flat plate marker, one foot by two feet, with the same information if it is deemed necessary for safe operation on the wellsite during the productive life of the well. A full size marker will then be installed upon final abandonment.

Figure 1 Vicinity Map
 SG Interest, I LTD.
 Federal 21-7-26 #1
 Section 26, T21N, R07W, N.M.P.M
 Sandoval County, New Mexico

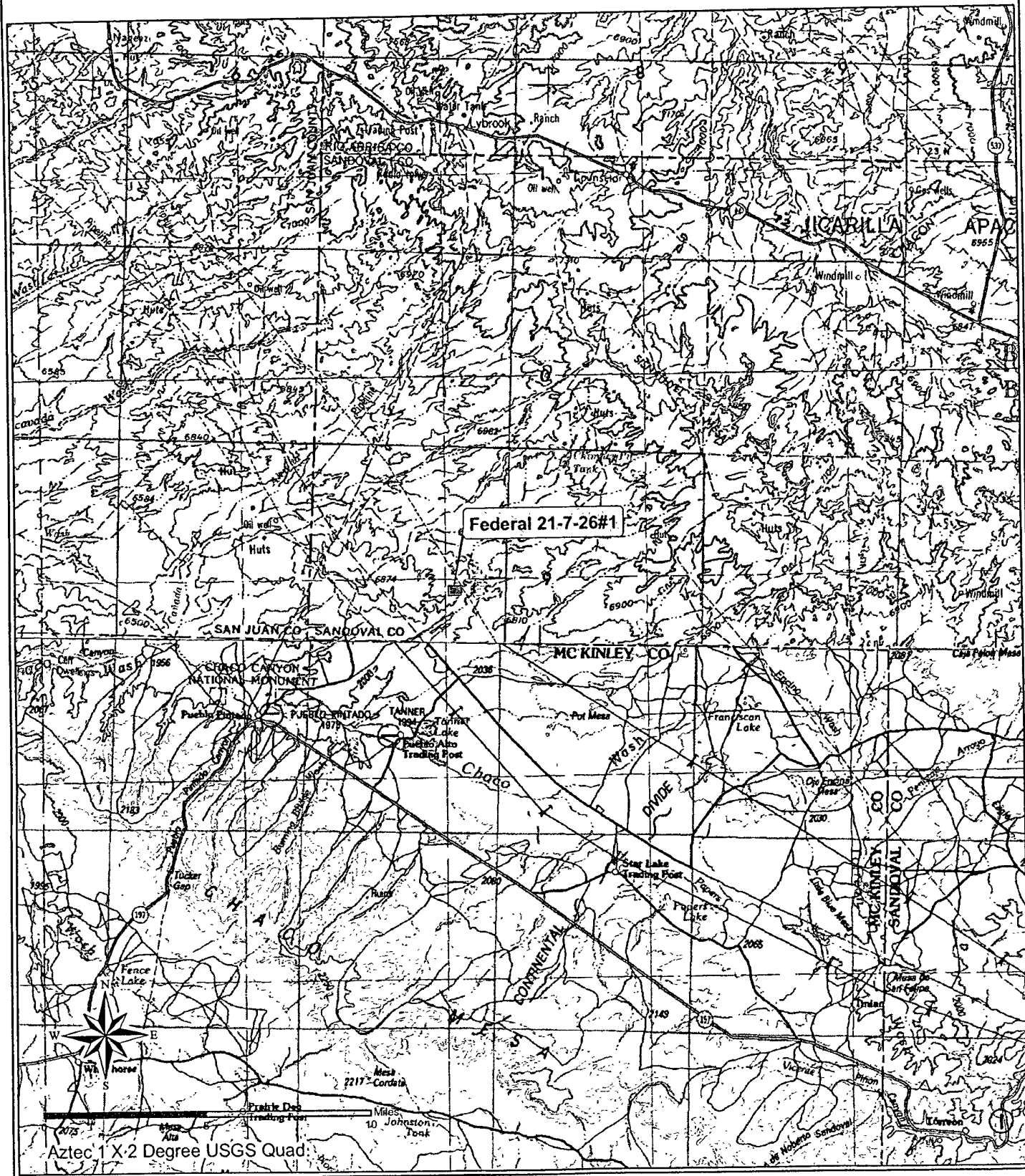
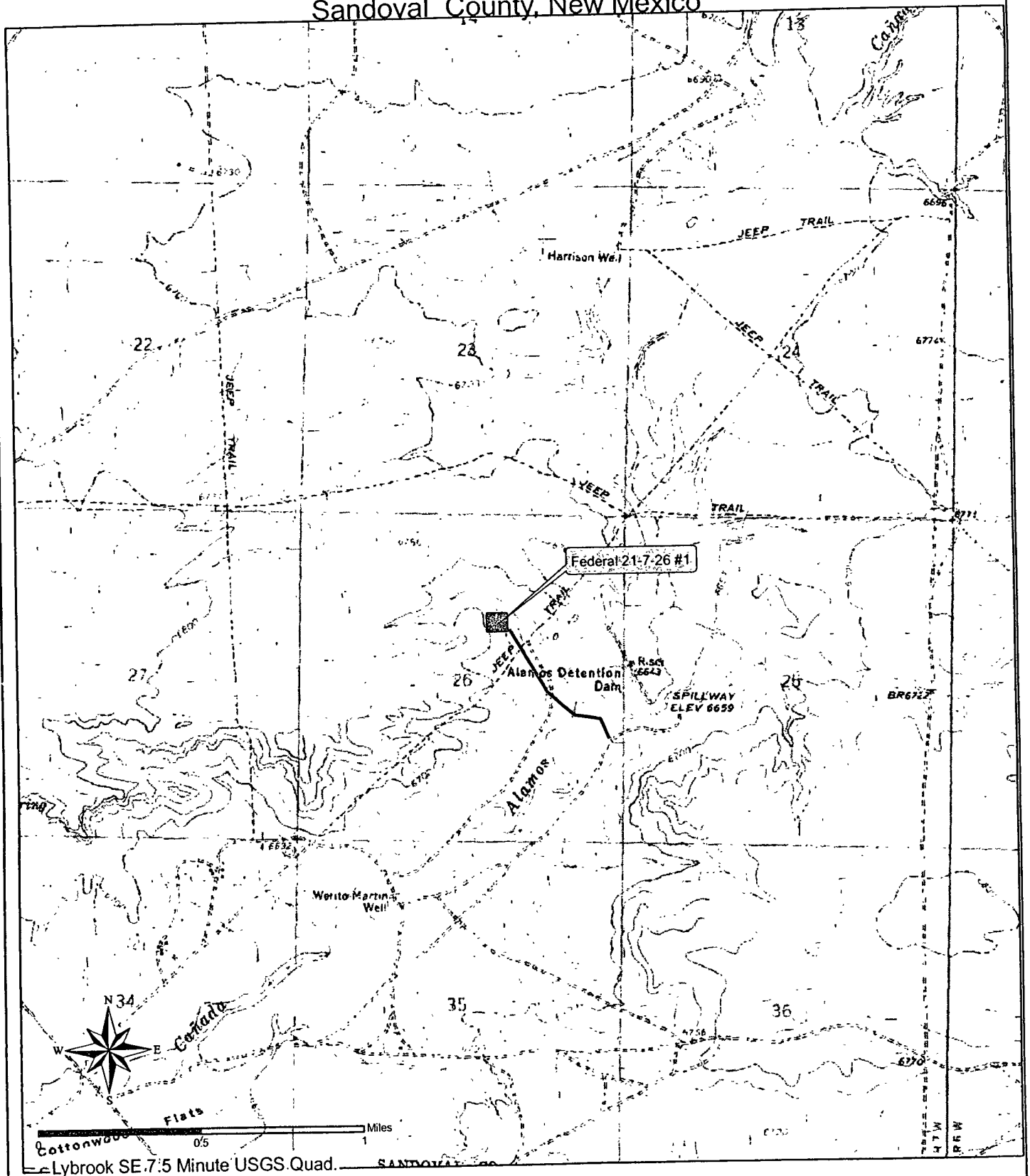


Figure 2 Project Area Map
SG Interests I, LTD
Proposed Federal 21-7-26 #1
T21N, R07W, Section 26, NMPM
Sandoval County, New Mexico



1625 N. French Dr., Hobbs, NM 88240
 District II
 1301 W. Grand Avenue, Artesia, NM 88210
 District III
 1089 Rio Bruces Rd., Aztec, NM 87410
 District IV
 1220 S. St. Francis Dr., Santa Fe, NM 87505

State of New Mexico
 Energy, Minerals & Natural Resources Department
OIL CONSERVATION DIVISION
 1220 South St. Francis Dr.
 Santa Fe, NM 87505

Form C-102
 Revised October 12, 2005
 Submit to Appropriate District Office
 State Lease - 4 Copies
 Fee Lease - 3 Copies

☐ AMENDED REPORT

WELL LOCATION AND ACREAGE DEDICATION PLAT

1 API Number		2 Pool Code		3 Pool Name	
4 Property Code		5 Property Name FEDERAL 21-7-26			6 Well Number 1
7 OGRID No.		8 Operator Name SG INTERESTS I, LTD.			9 Elevation 6681

10 Surface Location

UL or lot no.	Section	Township	Range	Lot Idn	Feet from the	North/South line	Feet from the	East/West line	County
G	26	21N	7W	1860		North	1970	East	Sandoval

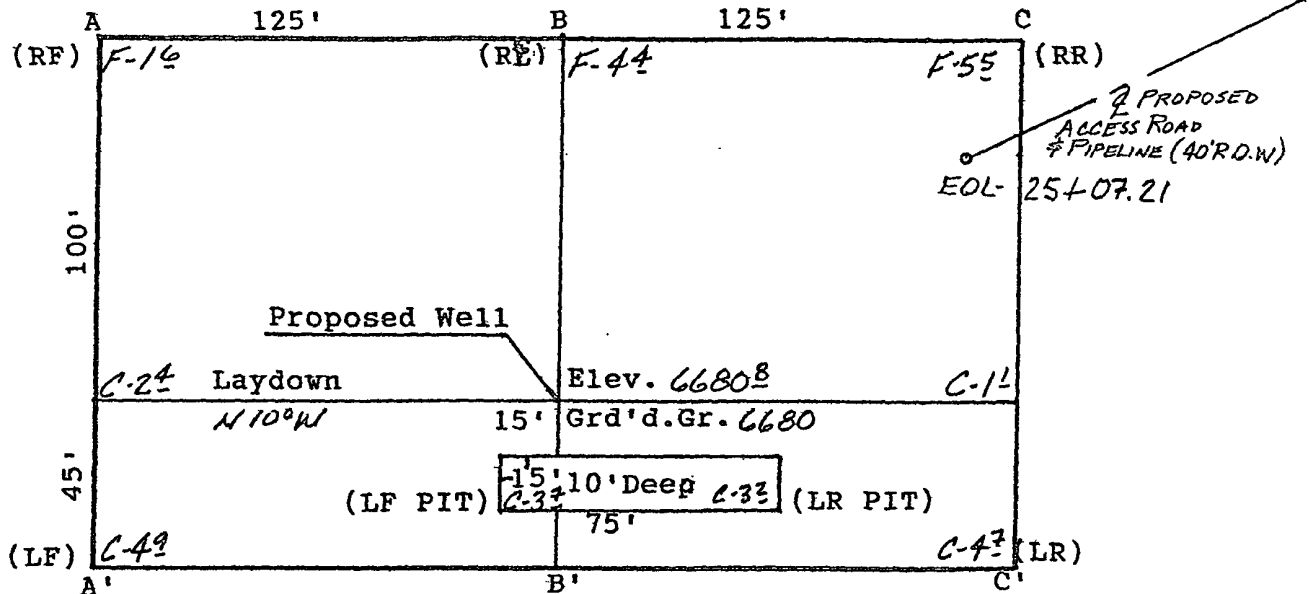
11 Bottom Hole Location If Different From Surface

UL or lot no.	Section	Township	Range	Lot Idn	Feet from the	North/South line	Feet from the	East/West line	County
12 Dedicated Acres 320.62									
13 Joint or Infill 14 Consolidation Code 15 Order No.									

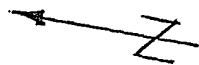
No allowable will be assigned to this completion until all interests have been consolidated or a non-standard unit has been approved by the division.

16 N 89°43' W 80.65 Ch. 1860' 79.97 Ch. 80.66 Ch. 1970' Sec. Lat. 36.02433° N Long. 107.54419° W 26 N 89°44' W 79.90 Ch.	17 OPERATOR CERTIFICATION I hereby certify that the information contained herein is true and complete to the best of my knowledge and belief, and that this organization either owns a working interest or a leased mineral interest in the land including the proposed bottom hole location or has a right to drill this well at this location pursuant to a contract with an owner of such a mineral or working interest, or to a voluntary pooling agreement or a compulsory pooling order heretofore entered by the division. Signature: <u>William Schwab</u> Date: <u>4/25/2008</u> Printed Name: <u>William Schwab</u>	
	18 SURVEYOR CERTIFICATION I hereby certify that the well location shown on this plat was plotted from field notes of actual surveys made by me or under my supervision, and that the same is true and correct to the best of my belief. Date of Survey: <u>05 Dec 2007</u> Signature and Seal of Professional Surveyor: <u>William E. Mahnke II</u> Certificate Number: <u>8466</u>	

SG INTERESTS I, LTD.
 FEDERAL 21-7-26 #1
 1860' FNL & 1970' FEL
 Sec. 26, T21N, R7W, NMPM
 Sandoval Co., NM

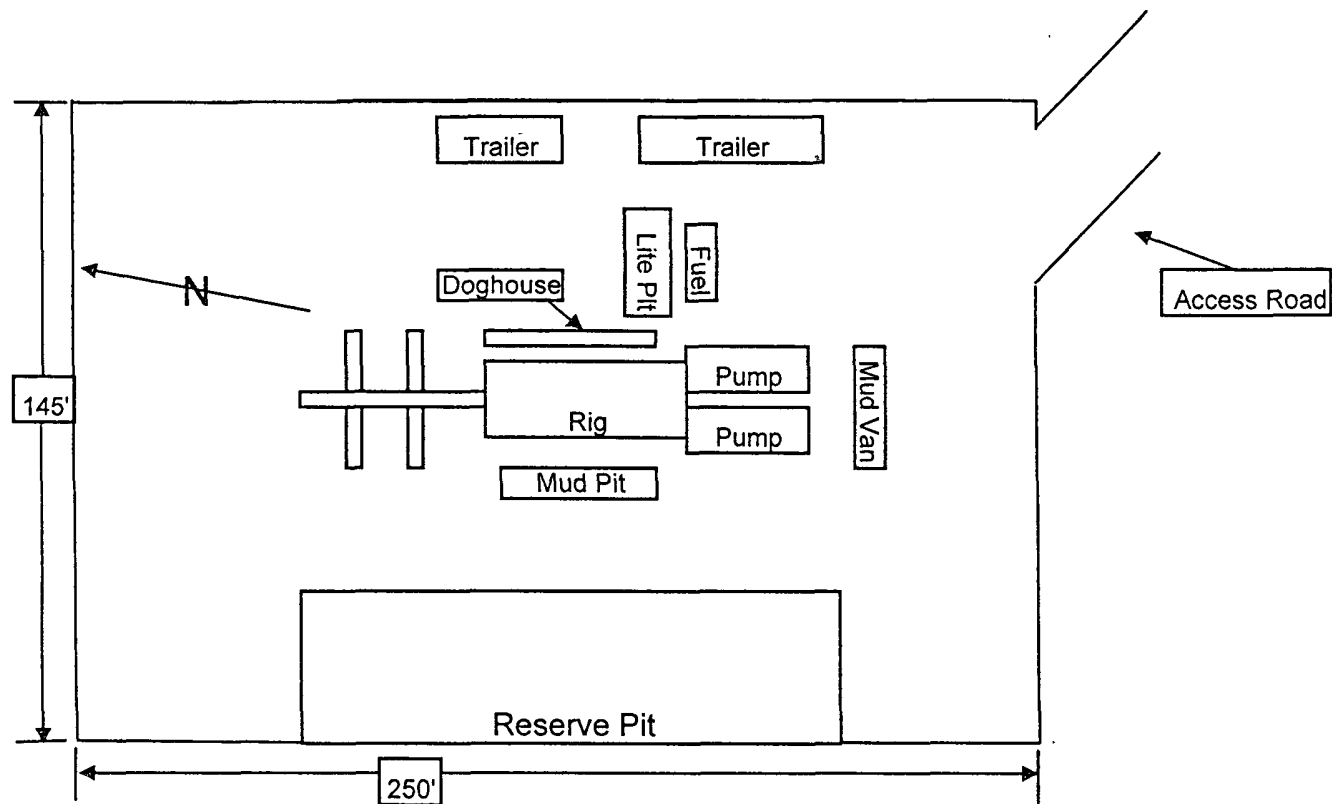


Scale: 1"=50'



A-A'	Vert.: 1"=30'	Horiz.: 1"=50'	C/L
6685	-----	-----	-----
6675	-----	-----	-----
	-----	-----	-----
B-B'			
6685	-----	-----	-----
6675	-----	-----	-----
	-----	-----	-----
C-C'			
6685	-----	-----	-----
6675	-----	-----	-----
	-----	-----	-----

Drilling Site Layout-Federal 21-7-26 #1



Tripp Schwab

From: Tripp Schwab [tripp@nikaenergy.com]
Sent: Thursday, July 17, 2008 9:27 AM
To: Bill Liess (bill_liess@nm.blm.gov)
Subject: Federal 21-6-26 #1 - API# 30-043-21062

Bill,

The requirements of the new OCD pit rule 17 requires notification to the surface owner that we are planning to open a temporary drilling pit on the subject location. Aware that SGI has an approved APD with this information in it I am still covering my bases. Please let me know if you have any questions or if this e-mail notification needs to be directed to someone else. Thank you for your time.

Tripp Schwab
Nika Energy Operating
Agent for SG Interests I, Ltd.
970-259-2701 off
970-385-1598 fax

7/17/2008

Tripp Schwab

From: Tripp Schwab [tripp@nikaenergy.com]
Sent: Thursday, July 17, 2008 9:49 AM
To: Bill Liess (bill_liess@nm.blm.gov)
Subject: FW: Federal 21-6-26 #1 - API# 30-043-21062

Bill,

The requirements of the new OCD pit rule 17 requires notification to the surface owner that we are planning to close a temporary drilling pit on the subject location after drilling operations cease. SGI plans to close the temporary pit per approved APD and NMOCD rules. Please let me know if you have any questions or if this e-mail notification needs to be directed to someone else. Thank you for your time.

Tripp Schwab
Nika Energy Operating
Agent for SG Interests I, Ltd.
970-259-2701 off
970-385-1598 fax

7/17/2008

Nika Energy Operating

Bill Liess
Bureau Of Land Management, DOI
Farmington Field Office
1235 La Plata Highway, Suite A
Farmington, NM 87401

RE: Federal 21-7-26 #1, API # 30-043-21062

Bill,

This is a follow up certified letter as per the requirements of the new OCD pit rule 17 requiring notification to the surface owner that we are planning to close a temporary drilling pit on the subject location. After drilling operations cease, SGI plans to close the temporary pit per the approved APD and the new NMOCD rules.

Please let me know if you have any questions or if this notification needs to be directed to someone else.

Thank you for your time.



Tripp Schwab
President
Nika Energy Operating, LLC
Agent for SG Interests.

U.S. Postal Service™ CERTIFIED MAIL™ RECEIPT (Domestic Mail Only; No Insurance Coverage Provided)	
For delivery information visit our website at www.usps.com	
OFFICIAL USE	
Postage \$	
Certified Fee	
Return Receipt Fee (Endorsement Required)	
Restricted Delivery Fee (Endorsement Required)	
Total	Attn: Mr. Bill Liess
Sent to	BLM, DOI
Street or PO	Farmington Field Office
City	1235 La Plata Highway, Suite A
	Farmington, NM 87401

PS Form 3800, August 2005 See Reverse for Instructions

7006 2150 0001 7642 7459

8002 17 7411 2112

DURANGO CO