

UNITED STATES  
DEPARTMENT OF INTERIOR  
BUREAU OF LAND MANAGEMENT

RECEIVED

FORM APPROVED  
Budget Bureau No. 1004-0135  
Expires: March 31, 1993

SUNDRY NOTICE AND REPORTS ON WELLS JUL 23 2008

Do not use this form for proposals to drill or to deepen or reentry to a different reservoir. Use "APPLICATION TO DRILL" for permit for such proposals Bureau of Land Management Farmington Field Office

5. Lease Designation and Serial No.  
NMSF-078764

6. If Indian, Allottee or Tribe Name

7. If Unit or CA, Agreement Designation  
Rosa Unit

8. Well Name and No.  
Rosa Unit #321A

9. API Well No.  
30-039-29881

10. Field and Pool, or Exploratory Area  
Basin Fruitland Coal

11. County or Parish, State  
Rio Arriba, New Mexico

SUBMIT IN TRIPLICATE

1. Type of Well  
Oil Well Gas Well X Other

2. Name of Operator  
WILLIAMS PRODUCTION COMPANY

3. Address and Telephone No.  
PO Box 640 Aztec, NM 87410-0640

4. Location of Well (Footage, Sec., T., R., M., or Survey Description)  
Sur: 1935' FSL & 480' FWL / BHL 2310' FNL & 330' FWL Sec 20, T31N, R5W  
NMMPM

CHECK APPROPRIATE BOX(S) TO INDICATE NATURE OF NOTICE, REPORT, OR OTHER DATA

TYPE OF SUBMISSION

TYPE OF ACTION

Notice of Intent

X Subsequent Report

Final Abandonment

Abandonment

Recompletion

Plugging Back

Casing Repair

Altering Casing

X Other Completion

Change of Plans

New Construction

Non-Routine Fracturing

Water Shut-Off

Conversion to Injection

Dispose Water

(Note. Report results of multiple completion on Well Completion or Recompletion Report and Log form.)

RCVD JUL 31 '08

OIL CONS. DIV.  
DIST. 3

06-25-2008

Recap: MIRU, set in air package, lay air lines & SDFN.

06-26-2008

Recap: Replace fall restraint system, new one didn't work, WO another one from AWS, replace w/ new one. Raise derrick, ND WH, NU BOPE, NU bloore lines, RU rig pump to csg valve, test 7" csg & blind rams to 1500 psi hold for 30min, good test. RU rig floor & tongs. Tally, PU, MU & RIW as follows- 6-1/4" RR bit, bit sub, eight 4-3/4 DC's, X-over sub & 95 jts 2-7/8" AOH DP. Tagged cmt @ 3231'. Secure well & loc, SDFN.

06-27-2008

Recap. RU rig pump & rig pit, PU & RU 3.5 PS, tie back drlg line. Tag @ 3231', break circ w/ prod coal wtr, begin drlg cmt. DO float collar @ 3238', DO 7" csg shoe @ 3288'. Begin drlg open hole @ 3288'. DO to 3419'. Circ bottoms up, LD 4 jts DP, pull into 7" csg. Secure well & loc, SDFN

06-28-2008

Recap. PU & RIW 5 jts DP, break circ w/ prod coal wtr, begin drlg open hole @ 3419', Choquette ML on loc. TD well @ 3560'. Coal packages, 3323' 1', 3327' 1', 3338' to 3354' 16', 3376' 1' 3384' to 3388' 4', 3425' to 3460' 35' Total 58'. Circ hole bottoms up, drop Totco survey tool, TOH & standback DC's & DP, recover survey tool, survey tool didn't register on survey chart. PU, MU Weatherford under reamer, bit sub, 8 4 3/4" DC's & 97 jts DP, set under reamer @ 3268'. Secure well & loc, SDFN.

14. I hereby certify that the foregoing is true and correct

Signed

Larry Higgins

Title Drilling C.O.M.

Date 7-23-08

(This space for Federal or State office use)

Approved by

Title

Date

JUL 29 2008

Conditions of approval, if any:

FARMINGTON FIELD OFFICE

BY T. Salves

Title 18 U.S.C. Section 1001, makes it a crime for any person knowingly and willfully to make to any department or agency of the United States any false, fictitious or fraudulent statements or representations as to any matter within its jurisdiction.

NMOCD

## Page 2 – RU #321A

06-29-2008

Recap: RIW w/ jt 97 to 3298', open under reamer arms, break circ w/ 16 bph air/mist w/ 1 gal foamer, 1/2 gal shale treat & 1/2 gal corrosion inhibitor per 20 bbl prod coal, begin under reaming open hole 6-1/4" to 9-1/2". UR to TD @ 3560'. Circ well bottoms up, pump 5 bbl soap sweep. TOH & LD 10 jts DP, hang off 3.5 PS, std back 3 stds DP, pull into 7" csg, set under reamer @ 3074'. Change out top pipe rams to 2-7/8", secure well & equip, SDFN.

06-30-2008

Recap: Bleed well down @ 2" line, SICP 540#. TOH, standback DP & DC's, hvy drag for 3 stds then freed up. LD Weatherford under reamer. One cone was broke off UR arm & wedged in body of UR. FLOW TEST: Duration = 1 hr, Test Method = pitot, MCF/D = 217 mcf/d, Csg Psi = 2 ozs, Tbg Psi = 0 psi due to exp chk, Gas Type = dry, Gas Disposition = non flaring, Choke Size = 2" open line, one hr pressure buildup test, 15 min = 50 psi, 30 min = 80 psi, 45 min = 130 psi, 60 min = 180 psi. TIH as follows- 6-1/4 bit, bit sub, eight 4-3/4" DC's, X-over sub & 96 jts 2-7/8" AOH DP. Set bit at 3261'. Build surge to 1200 psi, turn well over to FB & air hand for overnight cavitation. Cavitate well at shoe w/ natural & energized surges.

07-01-2008

Recap: Cavitate from shoe w/ energized surges. SICP 100 psi, blow well down @ blooie line. PU & RU 3.5 PS, PU DP sgls, ck for fill, tagged bridge @ 3325'. Break circ clear bridge, returns med coal fines, tagged bridge @ 3388' returns med coal fines. Work pipe & pump sweeps as needed, CO to TD @ 3560', returns were med coal fines & lt black wtr. LD 10 jts DP, pull into 7" csg. Hang off 3.5 PS, RU to surge from shoe. Build surges w/ air-mist to 1200 psi, soak for 1 hr, chase surges w/ air-mist. Cavitate well @ shoe w/ natural & energized surges.

07-02-2008

Recap: Cavitate from shoe w/ nat & energized surges SICP 500 psi, blow well down @ blooie line. Lt black dust & no wtr. PU & RU 3.5 PS, PU DP sgls ck for fill, tagged bridge @ 3325'. Break circ w/ 10 bph air-mist, clear bridge returns hvy fine to 1/4" coal, tagged bridge @ 3388' returns med fine to 1/8" coal. Stuck @ 3450', equalize down backside & worked free, unloaded very hvy fine to 1" coal, LD 2 jts DP, cont to CO, work pipe & pump sweeps as needed, CO to TD @ 3560'. Hang back PS, LD 10 jts DP pull into 7" csg. Hyd line broke on rig while pulling up to 7", repair hyd line. FLOW TEST: Duration = 1 hr, Test Method = pitot, MCF/ROMD = 404 mcf/romd, Csg Psi = 7 ozs, Tbg Psi = 0 psi due, Gas Type = dry, Gas Disposition = non flaring, Choke Size = 2" open line, build surge to 900 psi, turn well over to FB hand & air hand for overnight cavitation.

07-03-2008

Recap: Cavitate from shoe w/ nat & energized surges. SICP 550 psi, surge well to pit @ blooie line. Med black dust & no wtr. PU & RU 3.5 PS, PU DP sgls ck for fill, tagged fill @ 3445'. Break circ w/ 10 bph air-mist, per 20 bbl prod wtr, CO to 3460', making hvy fine to 1/2" coal. Hyd motor on PS locked up, unable to rotate, cont to circ hole w/ air mist. Change out power tongs, Hopper Specialty can't have mechanic out until Mon. Hang off PS, LD 7 jts of DP & pull into 7" csg. SD rig oper until Monday morning, suspend surging operations until Sunday morning.

07-06-2008

Recap: Cavitate from shoe w/ nat & energized surges, SICP 400 psi, surge to pit lt dust & no wtr, built surge to 900 psi in 15 min, well appears to be bridged off, surge to pit w/ lt fines & no wtr. Built surge to 1200 psi, surged to pit, unloaded hvy fine to 1/4" coal & lt black wtr, chased surge w/ air mist for 30 min, returns were hvy black fines & hvy black wtr. Cont surges to 900 psi.

07-07-2008

Recap: SICP 550#, surge well to pit, returned lt dust & no wtr. PU DP sgls, tag bridge @ 3262' 26' inside 7" csg, break circ w/ 10 bph air-mist, clear bridge. Well is heaving hvy fine to 1/2" coal w/ hvy torque on PS. Work pipe & pump sweeps as needed, CO to 3513', 47' off TD @ 3560'. Got stuck @ 3513' unable to pull free, equalized down backside & got free. LD 7 jts of DP pulling hard to 3320' unload hvy fine to 1/2" coal for 30 min. Pull into 7" csg, secure well & equip, turn over to FB hand & air hand for overnight cavitation. FLOW TEST Duration = 1 hr, Test Method = pitot, MCF/D = 539 mcf/d, Csg Psi = 12 ozs, Tbg Psi = 0 psi, Gas Type = dry, Gas Disposition = non flaring, Choke Size = 2" open line. Cavitate from shoe w/ 4 hr nat surges.

07-08-2008

Recap: Cavitate from shoe w/ natural surges. SICP 550 psi, surge well to pit. Med black dust & no wtr. PU & RU 3.5 PS, PU DP sgls check for fill, tagged bridge @ 3325'. Break circ w/ 10 bph air-mist, clear bridge returns hvy fine to 1/4" coal, tagged bridge @ 3372' returns hvy fine to 1/2" coal. CO to 3420', work pipe & pump sweeps as needed, CO to 3460', well cont to make very hvy coal & lt wtr. LD 7 jts DP & pull into 7" csg, turn well over to FB hand & air hand for overnight cavitation.

07-09-2008

Recap: Cavitate from shoe w/ nat surges. SICP 550 psi, surge well to pit. Med black dust & no wtr. PU & RU 3.5 PS, PU DP sgls check for fill, tagged bridge @ 3300'. Break circ w/ 10 bph air-mist, 1 gal foamer, 1/2 gal shale treat & 1/2 gal corrosion inhibitor per 20 bbl prod wtr, clear bridge returns hvy fine to 1/4" coal, tagged bridge @ 3388' returns hvy fine to 1/4" coal. CO to 3450'. Tagged hard fill @ 3450' returns hvy fines, hvy torque on PS, hole is very tight at this point. Work pipe & pump sweeps as needed. CO down to 3480'. LD 8 jts DP, pull into 7" csg, secure well & equip, turn well over to FB hand & air hand for overnight cavitation. Cavitate from shoe w/ nat surges.

07-10-2008

Recap: Cavitate from shoe w/ natural surges. SICP 550 psi, surge well to pit, med black dust & no wtr. PU & RU 3.5 PS, PU DP sgls check for fill, tagged bridge @ 3320'. Break circ, clear bridge returns hvy fine to 1/4" coal, tagged bridge @ 3388' returns hvy fine to 1/4" coal. CO to 3450'. Tagged hard fill @ 3450', returns hvy fines, hvy torque on PS, hole is very tight at this point. Work pipe & pump sweeps as needed. CO down to 3480', 80' off TD @ 3560'. LD 8 jts DP, TOH & standback DP & DC's. Secure well & equip, SIWFN.

07-11-2008

Recap: SICP 550#, bleed well down @ 2" line. PU 6-1/4" tooth bit, TIH w/ DC's & DP, tagged fill @ 3450', break circ w/ 12 bph air-mist, returns hvy fines, hvy torque on PS, hole is very tight at this point. Work pipe & pump sweeps as needed. CO down to 3460', 60' off TD @ 3560'. Bit quit making any hole, began pressuring up to 1500 psi when any weight was set on.

07-12-2008

Recap: SICP 550#, bleed well down @ 2" line. TOH & standback 1 std DP & 3 stds of DC, DC #7 was twisted off at the pin, DC #8, bit sub & bit were left in the hole. Top of fish @ 3467' (7' into rathole). Decision not to attempt recovery of DC. TIH w/ 3 stds of DC's, TOH & LD 6 DC's. WO replacement DC's. Pitot test well while waiting. FLOW TEST: Duration = 5.5 hr, Test Method = pitot, MCF/ROMD = 970 mcf/romd, Csg Psi = 40 ozs, Tbg Psi = 0 psi, Gas Type = dry, Gas Disposition = non flaring, Choke Size = 2" open line. Unload 8 DC's & load out 6 DC's to send in to Knight Oil Tools. Tally, PU, MU & RIW eight 4-3/4" DC's & 1 std of DP. SI & secure well & equip, SD rig operations until Monday AM.

### Page 3 – RU #321A

07-13-2008

Recap: SICP 500 psi, surge well to pit. Med black dust & no water. One hr press build up test, 15 min = 180#, 30 min = 280#, 45 min = 340#, 60 min = 400#. Cavitate from 313' w/ 3 hr nat surges, flow well for 30 min after each surge & SIFN.

07-14-2008

Recap: SICP 600 psi, surge well to pit. Med black dust & no wtr. TIH w/ DC's & DP, tag top of fish @ 3467', break circ w/ 8 bph air-mist, 1 gal foamer, 1/2 gal shale treat & 1/2 gal corrosion inhibitor, per 20 bbl prod wtr. Returned hvy fine coal for about 10 min then returns were clean. Clean off top of fish. Circ & wait for WL. RU Basin WL, RIW w/ Scientific Drlg Gyro, survey well from surface to survey depth 26 degrees @ 3430' & RD WL. **FLOW TEST: Duration = 1 hr, Test Method = pitot, MCF/D = 990 mcf/d, Csg Psi = 42 ozs, Tbg Psi = 0 psi, Gas Type = dry, Gas Disposition = non flaring, Choke Size = 2" open line.** Unload & tally 5-1/2" liner. SI & secure well & equip, SDFN.

07-15-2008

Recap: SICP 600 psi, bleed well down @ 2" line. TIH w/ DC's & DP, tag fill @ 3465', 2' of fill. Break circ w/ 8 bph air-mist, 1 gal foamer, 1/2 gal shale treat & 1/2 gal corrosion inhibitor, per 20 bbl prod wtr, returned hvy fine coal for about 10 min then returns were clean. Clean off top of fish @ 3467'. LD 7 jts DP, hang off PS. TOH & standback DP & DC's. **RU San Juan Csg, PU, MU & RIW as follows-LA set shoe, 6 jts 5-1/2", 17#, N-80, EUE csg (278.07'), H-latch, TIW setting tool. RD San Juan Csg. RIW w/ liner assy & 95 jts AOH DP. PU DP sgls run in slow, tag @ 3465' 2' of fill, break circ & clean off top of fish. Release liner @ 3467', PBTD 3466', 7" shoe @ 3288'. Liner top @ 3189', liner bottom @ 3467' 99' overlap. RD & LD 3.5 PS, TOH & LD DP & DC's.** Secure well & equip, SION.

07-16-2008

Recap: SICP 600 psi, bleed well down @ 2" line. **RU WL, perf 5-1/2" liner w/ 11 gram charge .53 holes, 4 spf, as follows bottom to top; 3420' to 3460' 40' 160 shots, 3375' to 3390' 15' 60 shots, 3338' to 3358' 20' 80 shots, 3323' to 3328' 5' 20 shots, total 80' 320 shots, RD Basin WL. Tally, PU, rabbit, MU & RIW as follows; 2-7/8" half muleshoe w/ exp ck, 2.28 ID F-nipple w/ standing valve, & 106 jts 2-7/8", 6.5#, J-55, EUE, 8rd tbg, test tbg every 35 jts to 1000 psig, good test. Fish standing valve w/ sandline. Tie air into tbg string, circ well until returns are clean, LD 2 jts tbg & standback 52 stds. Secure well & equip, SION.**

07-17-2008

Recap: SICP 550 psi, bleed well down @ 2" line. **RU BJ Dynacoil, TIH w/ prod tbg as follows; 2-7/8" mud anchor, 2-7/8" tbg screen, 2.28 ID F-nipple, 103 jts 6.50#, J-55, EUE 8rd tbg, one 8' X 2-7/8" pup jt, one 6' X 2-7/8" pup jt, one jt 6.50#, J-55, EUE 8rd tbg, one jt 6.50#, J-55, EUE 8rd tbg. Attach chem cap string @ top of tbg screen, run cap string to surface, total 3437' of 1/4" SS cap string. PU & MU tbg hanger, RD Dynacoil, land tbg. EOT @ 3464', 2' off PBTD, 2.28" ID F-nipple @ 3437'. PU MU & RIW as follows, gas anchor, 2-1/2" X 1-1/4" X 8 X 12 RHAC pump, 3 -3/4 X 1-1/4" sinker rods, 95 -3/4" API D rods, 38- 3/4" API D 2-1/2 guided rods, 1- 8' pony rod, 1- 6' pony rod, 2- 4' pony rods & 1-1/4" X 22' polished rod w/ 10' X 1-1/2" liner, install stuffing box, seat pump & space out pump, load tbg w/ prod wtr, test tbg & pump to 500 psig, release press & stroke pump to 500 psig, test ok. Secure well & loc.**

07-18-2008

Recap: RD surface equip, lower derrick, prepare for rig move to Rosa #378A. FINAL REPORT

**ROSA UNIT #321A  
BASIN FRUITLAND COAL**

Surface Location:

1935' FSL and 480' FWL  
NW/4 SW/4 Sec 20(L), T31N, R5W  
Rio Arriba, NM

Spud: 06/8/08

Completed: 07/17/08

1<sup>st</sup> Delivered: 00/00/00

Bottom Hole Location:

2310' FNL and 330' FWL  
SW/4 NW/4 Sec 20(E), T31N, R5W  
Rio Arriba, NM

Elevation: 6339' GR  
API # 30-039-29881

Top	MD Depth
Ojo Alamo	2433'
Kirtland	2558'
Fruitland	2958'

3 -3/4 X 1-1/4" sinker rods, 95 -3/4" API D rods,  
38- 3/4" API D 2-1/2 guided rods, 1- 8' pony rod, 1-  
6' pony rod, 2- 4' pony rods & 1-1/4" X 22' polished  
rod w/ 10' X 1-1/2" liner

0.53", 4SPF  
320 holes total

3323' - 3328'

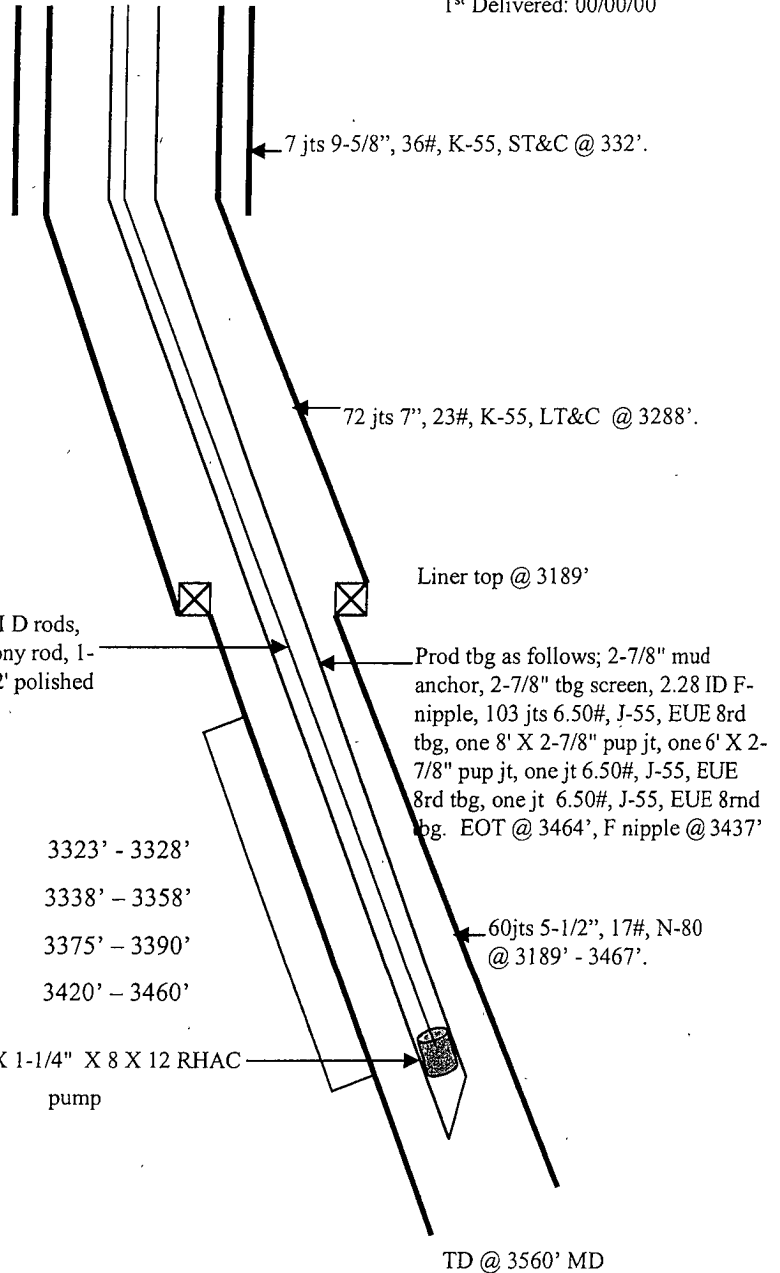
3338' - 3358'

3375' - 3390'

3420' - 3460'

2-1/2" X 1-1/4" X 8 X 12 RHAC  
pump

Open hole from 6-1/4" to 9-1/2"  
from 3298' to 3560'



Hole Size	Casing	Cement	Volume	Top of Cmt
12-1/4"	9-5/8", 36#	155 sxs	219 cu.ft	Surface
8-3/4"	7", 23#	499 sxs	961 cu ft.	Surface
6-1/4"	5-1/2", 17#	Did Not Cmt		