

In Lieu of  
Form 3160-4  
(July 1992)

**RECEIVED**  
JUL 23 2008  
UNITED STATES  
DEPARTMENT OF THE INTERIOR  
BUREAU OF LAND MANAGEMENT  
Farmington Field Office

SUBMIT IN  
DUPLICATE

FORM APPROVED  
OMB NO. 1004-0137  
Expires February 28, 1995

5 LEASE DESIGNATION AND LEASE NO.  
NMSF-078764

6 IF INDIAN, ALLOTTEE OR

7 UNIT AGREEMENT NAME

Rosa Unit

**NMM-78407D-FC**

8 FARM OR LEASE NAME, WELL NO  
Rosa Unit #321A

9 API WELL NO  
30-039-29881-0051

10. FIELD AND POOL, OR WILDCAT  
Basin Fruitland Coal

11 SEC, T, R, M, OR BLOCK AND  
SURVEY OR AREA  
SEC 20-31N-5W

12 COUNTY OR  
Rio Arriba

13 STATE  
New Mexico

19 ELEVATION CASINGHEAD

14 PERMIT NO

DATE ISSUED

18 ELEVATIONS (DK, RKB, RT, GR, ETC)\*  
6339' GR

15 DATE  
SPUDDED  
6-5-08

16 DATE T D  
REACHED  
6-16-08

17 DATE COMPLETED (READY TO PRODUCE)  
7-17-08

20 TOTAL DEPTH, MD & TVD  
3560' MD

21 PLUG, BACK T D, MD & TVD  
3560'

22 IF MULTICOMP,  
HOW MANY

23 INTERVALS  
DRILLED BY

ROTARY TOOLS  
x

CABLE TOOLS

24 PRODUCING INTERVAL(S), OF THIS COMPLETION - TOP, BOTTOM, NAME (MD AND TVD)\*  
Basin Fruitland Coal. 3323' - 3460'

25. WAS DIRECTIONAL SURVEY MADE  
YES

26 TYPE ELECTRIC AND OTHER LOGS RUN

27 WAS WELL CORED  
NO

28 CASING REPORT (Report all strings set in well)

CASING SIZE/GRADE	WEIGHT, LB / FT	DEPTH SET (MD)	HOLE SIZE	TOP OF CEMENT, CEMENTING RECORD	AMOUNT PULLED
9-5/8", K-55	36.0#	332'	12-1/4"	155 SX - SURFACE	
7", K-55	23.0#	3288'	8-3/4"	499 SX - SURFACE	

29 LINER RECORD

SIZE	TOP (MD)	BOTTOM (MD)	SACKS CEMENT*	SCREEN (MD)	SIZE	DEPTH SET (MD)	PACKER SET (MD)
5-1/2", 17#, N-80	3189'	3467'	0 SX		2-7/8", 6.5#, J-55	3464'	

31. PERFORATION RECORD (Interval, size, and number)

32 ACID, SHOT, FRACTURE, CEMENT SQUEEZE, ETC.

DEPTH INTERVAL  
(MD)

AMOUNT AND KIND OF MATERIAL USED

Basin Fruitland Coal - 3323' - 3460'

Well was not fraced or acidized

**RCVD JUL 31 '08  
OIL CONS. DIV.**

**DIST. 3**

33 PRODUCTION

DATE OF FIRST PRODUCTION		PRODUCTION METHOD (Flowing, gas lift, pumping-size and type of pump)				WELL STATUS (PRODUCING OR SI)	
		Flowing				SI - waiting on the in	
DATE OF TEST	TESTED	CHOKE SIZE	PROD'N FOR TEST PERIOD	OIL - BBL	GAS - MCF	WATER - BBL	GAS-OIL RATIO
7-14-08	10 hrs	2"					
FLOW TBG PRESS	CASING PRESSURE	CALCULATED 24-HOUR RATE		OIL - BBL	GAS - MCF	WATER - BBL	OIL GRAVITY-API (CORR )
0 oz	42' oz				990 p/day		

34 DISPOSITION OF GAS (Sold, used for fuel, vented, etc ) TO BE SOLD

TEST WITNESSED BY: Al Rector

35 LIST OF ATTACHMENTS SUMMARY OF POROUS ZONES, WELLBORE DIAGRAM

36 I hereby certify that the foregoing and attached information is complete and correct as determined from all available records

SIGNED Larry Higgins TITLE Drig COM DATE 7-23-08

**NMOCD**

ACCEPTED FOR RECORD

**JUL 29 2008**

FARMINGTON FIELD OFFICE  
BY T. Salyers

[illegible]

**ROSA UNIT #321A  
BASIN FRUITLAND COAL**

Surface Location:  
1935' FSL and 480' FWL  
NW/4 SW/4 Sec 20(L), T31N, R5W  
Rio Arriba, NM

Spud: 06/8/08  
Completed: 07/17/08  
1<sup>st</sup> Delivered. 00/00/00

Bottom Hole Location  
2310' FNL and 330' FWL  
SW/4 NW/4 Sec 20(E), T31N, R5W  
Rio Arriba, NM

Elevation: 6339' GR  
API # 30-039-29881

Top	MD Depth
Ojo Alamo	2433'
Kirtland	2558'
Fruitland	2958'

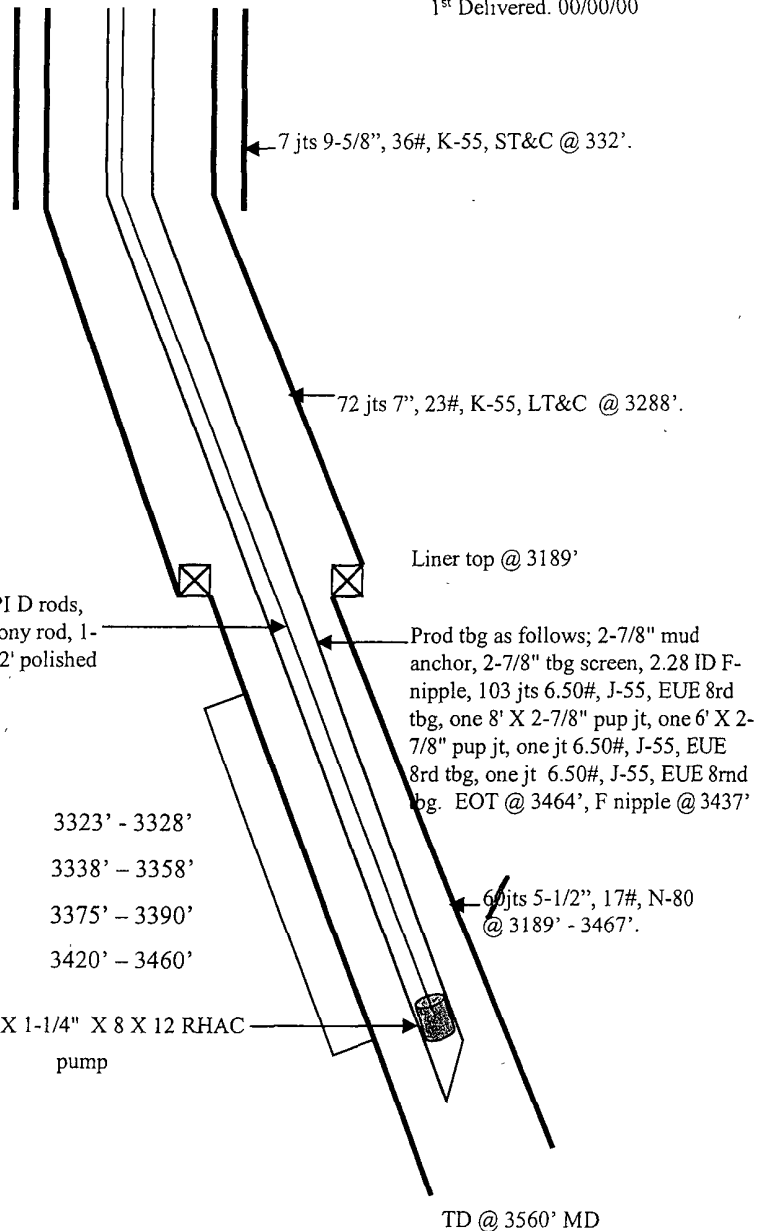
3 -3/4 X 1-1/4" sinker rods, 95 -3/4" API D rods,  
38- 3/4" API D 2-1/2 guided rods, 1- 8' pony rod, 1-  
6' pony rod, 2- 4' pony rods & 1-1/4" X 22' polished  
rod w/ 10' X 1-1/2" liner

0.53", 4SPF  
320 holes total

3323' - 3328'  
3338' - 3358'  
3375' - 3390'  
3420' - 3460'

2-1/2" X 1-1/4" X 8 X 12 RHAC  
pump

Open hole from 6-1/4" to 9-1/2"  
from 3298' to 3560'



Hole Size	Casing	Cement	Volume	Top of Cmt
12-1/4"	9-5/8", 36#	155 sxs	219 cu.ft.	Surface
8-3/4"	7", 23#	499 sxs	961 cu.ft.	Surface
6-1/4"	5-1/2", 17#	Did Not Cmt		