

RECEIVED

submitted in lieu of Form 3160-5

UNITED STATES
DEPARTMENT OF THE INTERIOR
BUREAU OF LAND MANAGEMENT

AUG 06 2008

Bureau of Land Management
Farmington Field Office

Sundry Notices and Reports on Wells

- | | |
|------------------------------------------------------------------------------------------------------------------------------------------------------------------------------------------------------------------------------------------------------------------------------------------------------------------------------|-----------------------------------------------------------------------------------------------------------------------------------------------------------------------------------------------------------------------------------------------------------------------------------------------------------------------------------------------------------------|
| <p>1. Type of Well
GAS</p> <p>2. Name of Operator
CONOCOPHILLIPS COMPANY</p> <p>3. Address & Phone No. of Operator
PO Box 4289, Farmington, NM 87499 (505) 326-9700</p> <p>4. Location of Well, Footage, Sec., T, R, M
Unit G (SWNE), 1885' FNL & 1165' FEL, Section 25, T29N, R05W, NMPM</p> | <p>5. Lease Number
NMSF-078917</p> <p>6. If Indian, All. or
Tribe Name</p> <p>7. Unit Agreement Name
San Juan 29-5 Unit</p> <p>8. Well Name & Number
San Juan 29-5 Unit 100</p> <p>9. API Well No.
30-039-22534</p> <p>10. Field and Pool
Blanco Mesaverde
Gobernador PC</p> <p>11. County and State
Rio Arriba Co., NM</p> |
|------------------------------------------------------------------------------------------------------------------------------------------------------------------------------------------------------------------------------------------------------------------------------------------------------------------------------|-----------------------------------------------------------------------------------------------------------------------------------------------------------------------------------------------------------------------------------------------------------------------------------------------------------------------------------------------------------------|

12. CHECK APPROPRIATE BOX TO INDICATE NATURE OF NOTICE, REPORT, OTHER DATA

Type of Submission	Type of Action
<input checked="" type="checkbox"/> Notice of Intent	<input type="checkbox"/> Abandonment <input type="checkbox"/> Change of Plans <input checked="" type="checkbox"/> Other - Commingle
<input type="checkbox"/> Subsequent Report	<input type="checkbox"/> Recompletion <input type="checkbox"/> New Construction
<input type="checkbox"/> Final Abandonment	<input type="checkbox"/> Plugging <input type="checkbox"/> Non-Routine Fracturing
	<input type="checkbox"/> Casing Repair <input type="checkbox"/> Water Shut off
	<input type="checkbox"/> Altering Casing <input type="checkbox"/> Conversion to Injection

13. Describe Proposed or Completed Operations

ConocoPhillips wishes to replace previous commingle sundry dated 3/13/2003 and commingle per the attached procedures and DHC 1155AZ.

SEE ATTACHED FOR
CONDITIONS OF APPROVAL

RCVD AUG 11 '08
OIL CONS. DIV.

DIST. 3

14. I hereby certify that the foregoing is true and correct.

Signed Tamra Sessions Tamra Sessions Title Regulatory Technician Date 8/05/2008

(This space for Federal or State Office use)

APPROVED BY [Signature] Title Reg. Eng. Date 8/8/08

CONDITION OF APPROVAL, if any:

Title 18 U.S.C. Section 1001, makes it a crime for any person knowingly and willfully to make any department or agency of the United States any false, fictitious or fraudulent statements or representations as to any matter within its jurisdiction

NMOCD

ConocoPhillips
San Juan 29-5 Unit #100 (PC/MV)
Commingle

Lat 36° 41' 55.14" N Long 107° 18' 21.244" W

Prepared By: **Jessie Kolesar** Date: **7/3/2008**
Production Engineering Peer review/approved By: Date: / /

Scope of work: The intent of this procedure is to commingle the PC and MV. By removing the packer a plunger will be able to lift the produced fluids. This will allow both zones to produce more effectively. Uplift is estimated at 70 Mcfd, and the payout is estimated at 19 months.

Est. Rig Days: 6

WELL DATA:

API: 300392253400
Location: 1885' FNL & 1165' FEL, Section 25- T 29 N - R 05 W
PBTD: 6118' **TD:** 6197'
Perforations: 5610'-6070' (MV); 3638'-3795' (PC)

Casing:	OD	Wt., Grade	Connection	ID/Drift (in)	Depth
	9-5/8"	32.3#, H-40	ST&C	9.001/8.845	211'
	7"	20.0#, J-55	-	6.456/6.331	4080'
Liner:	5-1/2"	15.5#, K-55	-	4.950/4.825	3884' - 6195'
Tubing:	1-1/4"	2.30#, J-55	EUE	1.380/1.286	3699'
F Nipple:	1-1/4"	2.30#, J-55	-	1.062	3698'
Tubing:	2-3/8"	4.70#, J-55	EUE	1.995/1.901	5902'
F Nipple:	2-3/8"	4.70#, J-55	-	1.81	5894'

Well History/ Justification: This well was spud April 1981 and completed June 1981. In 1995, both tubing strings were pulled and replaced. Currently the MV and PC strings have to be blown to the tanks frequently for the well to produce.

B2 Adapters are required on all wells other than pumping wells.

Artificial lift on well (type): None

Est. Reservoir Pressure (psig): 1100 (MV) 400 (PC)

Well Failure Date: none

Current Rate (Mcfd): 60 **Est. Rate Post Remedial (Mcfd):** 130

Earthen Pit Required: NO

Special Requirements: Updated facilities: Separator, Plunger, Tank, Pit, Offset spool, Slip grip elevators.

ConocoPhillips
San Juan 29-5 Unit #100 (PC/MV)
Comminge

Lat 36° 41' 55.14" N Long 107° 18' 21.244" W

PROCEDURE:

1. Hold safety meeting. Comply with all NMOCD, BLM and company safety and environmental regulations. Test rig anchors prior to moving in rig.
2. MIRU. Check casing and tubing pressures and record in WellView. RU relief line and blow well down. Kill well with 2% KCl water, if necessary. ND wellhead, NU BOP.
3. Release tubing hanger. **Short string** of Tubing is landed @ **3699'**, Packer is @ **3852'** (**Baker packer; model F1 production packer**). Tag for fill. Record the fill depth in Wellview.
4. TOOH laying down short string of tubing (PC). **From top to bottom:**
 - 1 – 1.900" EUE x 1.900" EUE Mandrel
 - 1 – 1.660" IJ x 1.900" XO
 - 109 jts 1-1/4" 2.3# Tubing
 - 1 – 1.062" Seating Nipple
 - 1 – 1-1/4" Seat Joint
5. Visually inspect tubing, record findings in WellView, make note of corrosion or scale. Change out joints as necessary.
6. TOOH laying down **Long string** tubing (MV). Release seal assembly from the Baker Packer. If seal assembly will not come free, then cut tubing above the packer and fish with overshot and jars. TOOH with MV tubing (**set @ 5902'**). Visually inspect tubing for corrosion and replace any bad joints, Check tubing for scale build up and notify Operation Engineer. **From top to bottom:**
 - 1 – 7-1/16" Dual Hanger
 - 1 – 2-3/8" 4.7# J-55 Landing Joint
 - 3 – 2-3/8" x 5' 4.7# J-55 Pup Joint
 - 114 jts – 2-3/8" 4.7# J-55 Tubing
 - 10 jts – 2-3/8" 4.7# N-80 Tubing
 - 1 – 2-3/8" x 6' Pup Joint
 - 1 – Mod G-22 Locator
 - 68 jts – 2-3/8" 4.7# J-55 Tubing
 - 1 – 3.063" 1.81 F Nipple
 - 1 – 2-3/8"x5' Mule Shoe joint
7. Pick up 2 3/8 tubing. RIH with packer mill and packer plucker. Retrieve complete packer assembly.
8. TIH and clean out to **PBTD @ 6118'**. If scale is on the tubing, spot acid. Contact senior rig superintendent or Production Engineer for acid volume, concentration, and displacement volume. TOOH.

9. TIH with tubing (detail below). Broach tubing while tripping back in hole (Well will be on plunger lift). Recommended landing depth is **+/-5900'** (plus or minus 5')
 - 1 – 2-3/8" Mule shoe/expendable check
 - 1 – 2-3/8" x 1.780" F Nipple
 - 1 – 2-3/8" 4.7# J-55 tubing joint
 - 1 – 2-3/8" x 2' 4.7# J-55 Pup Joint
 - +/-195 – 2-3/8" 4.7# EUE Tubing
 - Pup joints as needed to surface.
10. Run standing valve on shear tool, load tubing, and pressure test to 1000 psig. Pull standing valve.
11. ND BOP. NU wellhead. Pump off expendable check. Reverse up tubing to verify flow up tubing. Make swab run if necessary to kick off well. Notify lease operator that well is ready to be returned to production. RD, MOL.

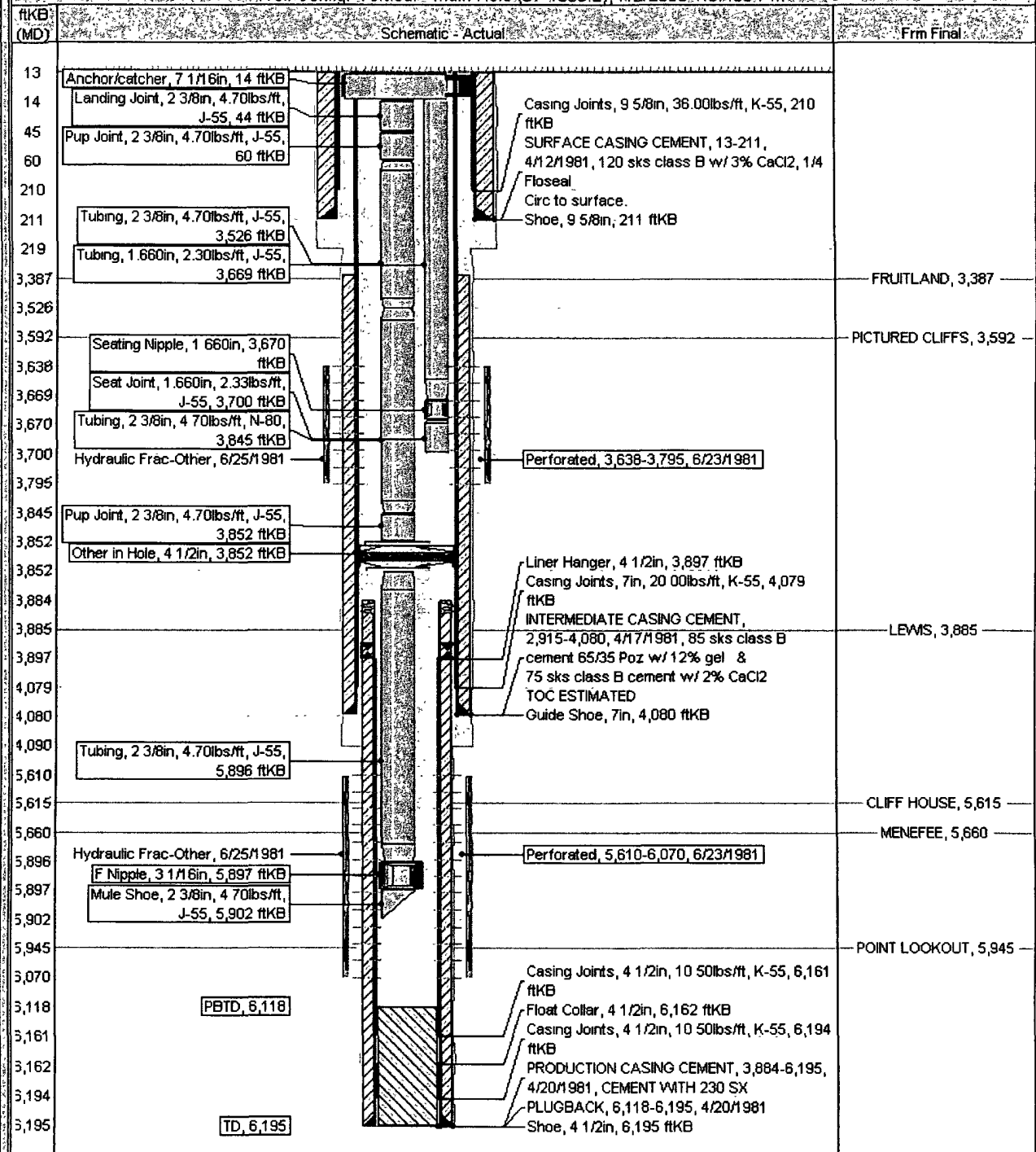
Current Schematic

ConocoPhillips

Well Name: SAN JUAN 29-5 UNIT #100

API/UTM	Surface Legal Location	Field Name	License No.	State/Province	Well Configuration Type	Edit
300392253400	NMPM-29N-05W-25-G	PC/MV DUAL		NEW MEXICO	Vertical	
Gross Elevation (ft)	Original K&RT Elevation (ft)	K&RT Ground Distance (ft)	K&RT Casing Flange Distance (ft)	K&RT Tubing Hanger Distance (ft)		
6,795.00	6,808.00	13.00				

Well Config: Vertical - Main Hole (0 - 1888.2), 7/2/2008 1:57:55 PM



BLM CONDITIONS OF APPROVAL

Workover and Recompletion Operations:

- 1. A properly functioning BOP and related equipment must be installed prior to commencing workover and/or recompletion operations.**
- 2. If this well is in a Seasonal Closure Area, adhere to the closure requirements and timeframes.**
- 3. If casing repairs are required, contact this office to obtain prior approval before conducting casing repair operations.**

SURFACE USE OPERATIONS:

The following Stipulations will apply to this well unless a particular Surface Managing Agency or private surface owner has supplied to BLM and operator a contradictory environmental stipulation. The failure of operator to comply with these requirements may result in assessments or penalties pursuant to 43 CFR 3163.1 or 3163.2. A copy of these conditions of approval shall be present on location during construction, drilling and reclamation activity.

An agreement between operator and fee landowner will take precedence over BLM surface stipulations unless (in reference to 43 CFR Part 3160) 1) BLM determines that operator's actions will affect adjacent Federal or Indian surface, or 2) operator does not maintain well area and lease premises in a workmanlike manner with due regard for safety, conservation and appearance, or 3) no such agreement exists, or 4) in the event of well abandonment, minimal Federal restoration requirements will be required.

STANDARD STIPULATIONS: All surface areas disturbed during work-over activities and not in use for production activities will be reseeded. This should occur in the first 90 days after completion of work-over activities.

SPECIAL STIPULATIONS:

- 1. Pits will be fenced during work-over operation.**
- 2. All disturbance will be kept on existing pad.**
- 3. All pits will be pulled and closed immediately upon completion of the work-over activities.**
- 4. Pits will be lined with an impervious material at least 12 mils thick.**