

DISTRICT II
1301 W. Grand Avenue, Artesia, N.M. 88210

DISTRICT III
1000 Rio Brazos Rd., Aztec, N.M. 87410

DISTRICT IV
1220 S. St. Francis Dr., Santa Fe, NM 87505

OIL CONSERVATION DIVISION
1220 South St. Francis Dr.
Santa Fe, NM 87505

Submit to Appropriate District Office
State Lease - 4 Copies
Fee Lease - 3 Copies
RCVD AUG 19 '08
OIL CONS. DIV.

WELL LOCATION AND ACREAGE DEDICATION PLAT

DIST. 2

*API Number 30-039-30159		*Pool Code 72400	*Pool Name PICTURED CLIFF
*Property Code 21994	*Property Name SAN JUAN 30-4 UNIT		*Well Number 62
*OGRID No. 162920	*Operator Name ENERGEN RESOURCES CORPORATION		*Elevation 7094'

¹⁰ Surface Location

UL or lot no.	Section	Township	Range	Lot Idn	Feet from the	North/South line	Feet from the	East/West line	County
F	18	30N	4W		1375'	NORTH	665'	WEST	RIO ARRIBA

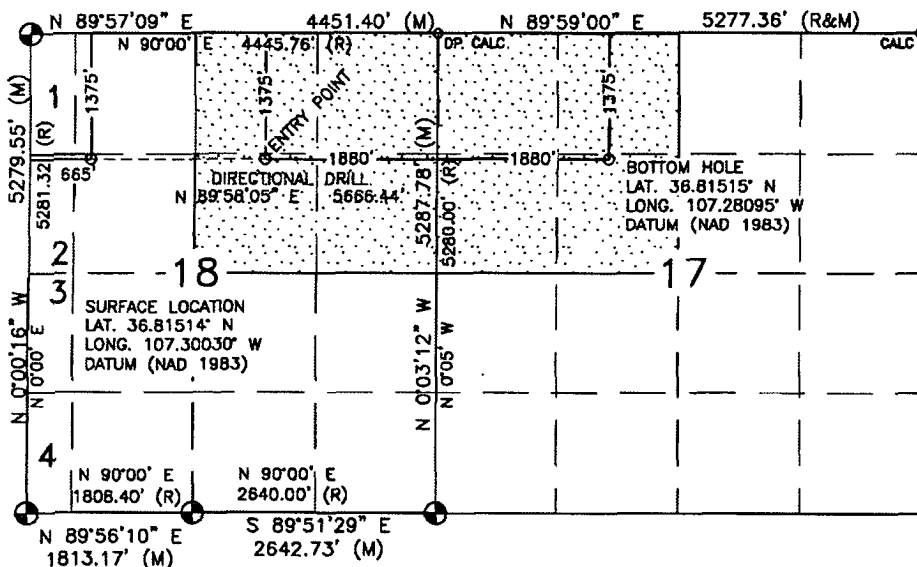
¹¹ Bottom Hole Location If Different From Surface

UL or lot no.	Section	Township	Range	Lot Idn	Feet from the	North/South line	Feet from the	East/West line	County
F	17	30N	4W		1375'	NORTH	1880'	WEST	RIO ARRIBA

¹⁸ Dedicated Acres 160 Acres - (NE/4, SEC.18) 160 Acres - (NW/4, SEC.17)	¹⁹ Joint or Infill	²⁰ Consolidation Code	²¹ Order No.
---	-------------------------------	----------------------------------	-------------------------

NO ALLOWABLE WILL BE ASSIGNED TO THIS COMPLETION UNTIL ALL INTERESTS HAVE BEEN CONSOLIDATED
OR A NON-STANDARD UNIT HAS BEEN APPROVED BY THE DIVISION

16



17	OPERATOR CERTIFICATION
----	------------------------

I hereby certify that the information contained herein is true and complete to the best of my knowledge and belief, and that this organization either owns a working interest or unleased mineral interest in the land including the proposed bottom hole location or has a right to drill this well at this location pursuant to a contract with an owner or a compulsory pooling order heretofore entered by the division.

Signature Nathan S. H. Date 8/19/08

Nathan Smith
Printed Name

18 SURVEYOR CERTIFICATION

I hereby certify that the well location shown on this plat was plotted from field notes of actual surveys made by me or under my supervision, and that the same is true and correct to the best of my belief.

MAY 30, 2006

Date of Survey _____

Signature and Seal of Professional Surveyor.

Del R Russell

