

DISTRICT I  
1625 N. French Dr., Hobbs, N.M. 88240

State of New Mexico  
Energy, Minerals & Natural Resources Department

Form C-102  
Revised October 12, 2005

DISTRICT II  
1301 W. Grand Avenue, Artesia, N.M. 88210

DISTRICT III  
1000 Rio Brazos Rd., Aztec, N.M. 87410

DISTRICT IV  
1220 S. St. Francis Dr., Santa Fe, NM 87605

OIL CONSERVATION DIVISION  
1220 South St. Francis Dr.  
Santa Fe, NM 87505

Submit to Appropriate District Office  
State Lease - 4 Copies  
Fee Lease - 3 Copies  
RCVD AUG 19 '08  
OIL CONS. DIV.

WELL LOCATION AND ACREAGE DEDICATION PLAT

DIST. 3

*API Number 30-039-30159		*Pool Code 72400		*Pool Name PICTURED CLIFF	
*Property Code 21994		*Property Name SAN JUAN 30-4 UNIT			*Well Number 62
*GRID No. 162928		*Operator Name ENERGEN RESOURCES CORPORATION			*Elevation 7094'

<sup>10</sup> Surface Location

UL or lot no.	Section	Township	Range	Lot Idn	Feet from the	North/South line	Feet from the	East/West line	County
F	18	30N	4W		1375'	NORTH	665'	WEST	RIO ARRIBA

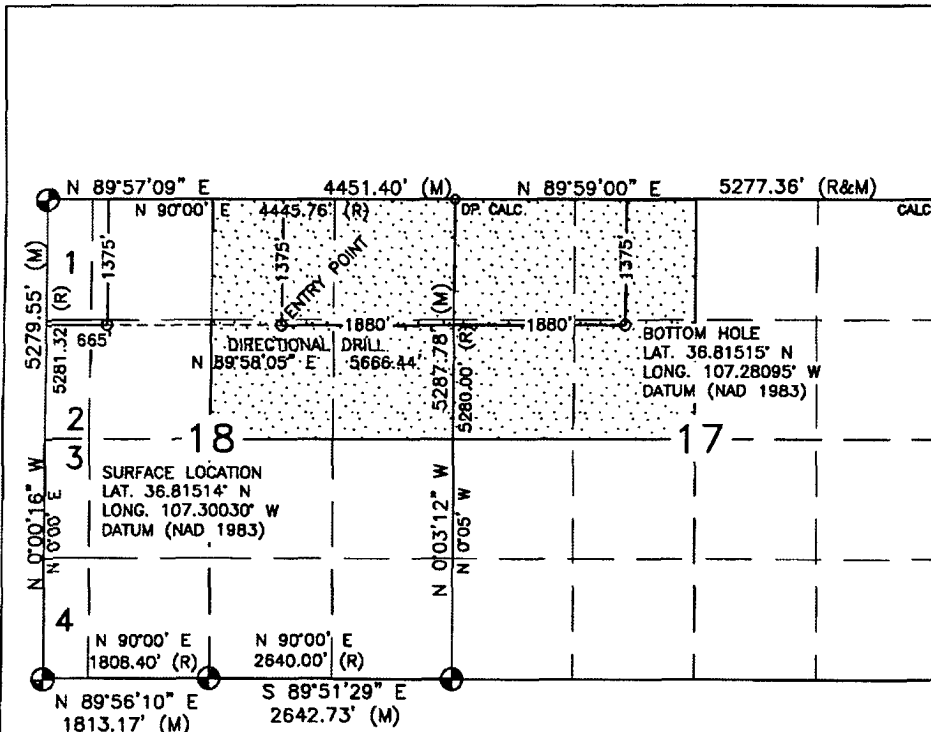
<sup>11</sup> Bottom Hole Location If Different From Surface

UL or lot no.	Section	Township	Range	Lot Idn	Feet from the	North/South line	Feet from the	East/West line	County
F	17	30N	4W		1375'	NORTH	1880'	WEST	RIO ARRIBA

<sup>12</sup> Dedicated Acres 160 Acres - (NE/4, SEC.18) 160 Acres - (NW/4, SEC.17)		<sup>13</sup> Joint or Infill	<sup>14</sup> Consolidation Code	<sup>15</sup> Order No.
---	--	-------------------------------	----------------------------------	-------------------------

NO ALLOWABLE WILL BE ASSIGNED TO THIS COMPLETION UNTIL ALL INTERESTS HAVE BEEN CONSOLIDATED  
OR A NON-STANDARD UNIT HAS BEEN APPROVED BY THE DIVISION

16



<sup>17</sup> OPERATOR CERTIFICATION

I hereby certify that the information contained herein is true and complete to the best of my knowledge and belief, and that this organization either owns a working interest or unleased mineral interest in the land including the proposed bottom hole location or has a right to drill this well at this location pursuant to a contract with an owner or a compulsory pooling order heretofore entered by the division.

*Nathan Smith* 8/19/08  
Signature Date

Nathan Smith  
Printed Name

<sup>18</sup> SURVEYOR CERTIFICATION

I hereby certify that the well location shown on this plat was plotted from field notes of actual surveys made by me or under my supervision, and that the same is true and correct to the best of my belief.

MAY 30, 2006

Date of Survey

Signature and Seal of Professional Surveyor:

*David R. Russell*

