

UNITED STATES
DEPARTMENT OF THE INTERIOR
BUREAU OF LAND MANAGEMENT

RECEIVED

JUN 05 2008

Bureau of Land Management
Farmington Field Office

RCVD AUG 19 '08
OIL CONS. DIV.
DIST. 3

APPLICATION FOR PERMIT TO DRILL, DEEPEN, OR PLUG BACK

1a. Type of Work DRILL	5. Lease Number NMSF-078201-A Unit Reporting Number	
1b. Type of Well GAS	6. If Indian, All. or Tribe	
2. Operator BURLINGTON RESOURCES Oil & Gas Company, LP	7. Unit Agreement Name	
3. Address & Phone No. of Operator PO Box 4289, Farmington, NM 87499 (505) 326-9700	8. Farm or Lease Name Riddle A 9. Well Number #2B	
4. Location of Well Surf: Unit B(NWNE), 895' FNL & 1485' FEL <i>Lot 6</i> Surf: Latitude 36.757909° N Longitude 107.725257° W	10. Field, Pool, Wildcat Blanco Mesaverde 11. Sec., Twn, Rge, Mer. (NMPM) Sec. 1, T29N, R9W API # 30-045-34736	
14. Distance in Miles from Nearest Town 18.9 Miles/Bloomfield, NM	12. County San Juan	13. State NM
15. Distance from Proposed Location to Nearest Property or Lease Line 895'		
16. Acres in Lease 972.050	17. Acres Assigned to Well 332.05 (E/2)	
18. Distance from Proposed Location to Nearest Well, Drig, Compl, or Applied for on this Lease 662' from Riddle A #4 - PC		
19. Proposed Depth 5415'	20. Rotary or Cable Tools Rotary	
21. Elevations (DF, FT, GR, Etc.) 6339' GR	22. Approx. Date Work will Start BLM'S APPROVAL OR ACCEPTANCE OF THIS ACTION DOES NOT RELIEVE THE LESSEE AND OPERATOR FROM OBTAINING ANY OTHER AUTHORIZATION REQUIRED FOR OPERATIONS ON FEDERAL AND INDIAN LANDS 6/4/08 Date	
23. Proposed Casing and Cementing Program See Operations Plan attached		
24. Authorized by: <i>Crystal Tafoya</i> Crystal Tafoya (Regulatory Technician)		

PERMIT NO.

APPROVAL DATE

APPROVED BY

TITLE

DATE

Archaeological Report attached

Threatened and Endangered Species Report attached

NOTE: This format is issued in lieu of U.S. BLM Form 3160-3

Title 18 U.S.C. Section 1001, makes it a crime for any person knowingly and willfully to make to any department or agency of the United States any false, fictitious or fraudulent statements or presentations as to any matter within its jurisdiction.

Example Master Plan Type 3

Bond Numbers NMB-000015 and NMB-000089

A COMPLETE C-144 MUST BE SUBMITTED TO AND APPROVED BY THE NMOC FOR: A PIT, CLOSED LOOP SYSTEM, BELOW GRADE TANK, OR PROPOSED ALTERNATIVE METHOD, PURSUANT TO NMOC PART 19.15.17, PRIOR TO THE USE OR CONSTRUCTION OF THE ABOVE APPLICATIONS.

NMOC

AUG 21 2008

NOTIFY AZTEC OCD 24 HRS.
PRIOR TO CASING & CEMENT

This action is subject to technical and procedural review pursuant to 43 CFR 3165.3 and appeal pursuant to 43 CFR 3165.4

District I

1625 N. French Dr., Hobbs, NM 88240

District II

1301 W. Grand Avenue, Artesia, NM 88210

District III

1000 Rio Brazos Rd., Aztec, NM 87410

District IV

1220 S. St. Francis Dr., Santa Fe, NM 87505

State of New Mexico
Energy, Minerals & Natural Resources Department
OIL CONSERVATION DIVISION
1220 South St. Francis Dr.
Santa Fe, NM 87505

RECEIVED
JUN 05 2008
Bureau of Land Management
Farmington Field Office

Form C-102

Revised October 12, 2005

Submit to Appropriate District Office

State Lease - 7 Copies

Fee Lease - 3 Copies

☐ AMENDED REPORT

WELL LOCATION AND ACREAGE DEDICATION PLAT

¹ API Number 30-045- 34736	² Pool Code 72319	³ Pool Name BLANCO MESAVERDE
⁴ Property Code 7425	⁵ Property Name RIDDLE A	⁶ Well Number 2B
⁷ OGRID No. 14538	⁸ Operator Name BURLINGTON RESOURCES OIL & GAS COMPANY LP	⁹ Elevation 6339

¹⁰ SURFACE LOCATION

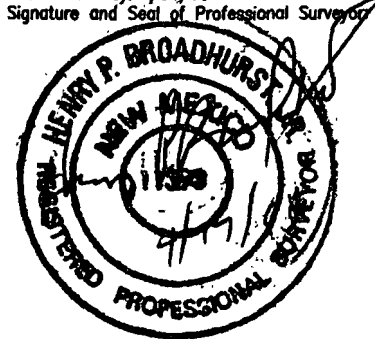
UL or lot no. B	Section 1	Township 29-N	Range 9-W	Lot Idn (6)	Feet from the 895	North/South line NORTH	Feet from the 1485	East/West line EAST	County SAN JUAN
--------------------	--------------	------------------	--------------	----------------	----------------------	---------------------------	-----------------------	------------------------	--------------------

¹¹ Bottom Hole Location If Different From Surface

UL or lot no. B	Section	Township	Range	Lot Idn	Feet from the	North/South line	Feet from the	East/West line	County
--------------------	---------	----------	-------	---------	---------------	------------------	---------------	----------------	--------

¹² Dedicated Acres 332.05 (E/2)	¹³ Joint or Infill	¹⁴ Consolidation Code	¹⁵ Order No.
---	-------------------------------	----------------------------------	-------------------------

NO ALLOWABLE WILL BE ASSIGNED TO THIS COMPLETION UNTIL ALL INTERESTS HAVE BEEN
CONSOLIDATED OR A NON-STANDARD UNIT HAS BEEN APPROVED BY THE DIVISION

¹⁶ BLM 1951 N 88°29'18" W N 88°22'00" W	6	5 6010.2' (M) 6000.7' (R) 1950	GLO 1950	¹⁷ OPERATOR CERTIFICATION I hereby certify that the information contained herein is true and complete to the best of my knowledge and belief, and that this organization either owns a working interest or unleased mineral interest in the land including the proposed bottom hole location or has a right to drill this well at this location pursuant to a contract with an owner of such a mineral or working interest, or to a voluntary pooling agreement or a compulsory pooling order heretofore entered by the division. <i>Crystal Walker</i> 4/18/08 Signature Crystal Walker Printed Name Regulatory Technician Title and E-mail Address April 18, 2008 Date
	11	WELL FLAG 12 NAD 83 LAT: 36.757909° N LONG: 107.725257° W NAD 27 LAT: 36°45.474274' N LONG: 107°43.478578' W		¹⁸ SURVEYOR CERTIFICATION I hereby certify that the well location shown on this plat was plotted from field notes of actual surveys made by me or under my supervision, and that the same is true and correct to the best of my belief. Date of Survey: 4/04/08 Signature and Seal of Professional Surveyor  Certificate Number: NM 11393
	J	E/2 DEDICATED ACREAGE USA SF-078201-A SECTION 1, T-29-N, R-9-W		
	O	P	N 2°55'00" E N 2°51'58" E	

COMPANY
Charge Code
WELL NAME
DUAL WELL
TRIPLE WELL

BURLINGTON RESOURCES		
WAN.RFE.PD07.ID		
RIDDLE A # 2 B	DATE	4/21/2008
WELL NAME		
WELL NAME		

COORDINATES

SEC	TNSHP	RANGE	LATITUDE	LONGITUDE
B 1	29 N	9 W	36 45.474274 N	107 43.478578 W

COUNTY

SAN JUAN

	SIZE	NEEDED	EXISTING	1 PHASE	3 PHASE
<u>RECTIFIER</u>	30/12	X			
<u>SOLAR</u>					
<u>GROUND BED</u>		X			
<u>240 V METER POLE</u>					
<u>480 V METER POLE</u>					
<u>D C CABLES</u>	# 8	200'			
<u>A C CABLES</u>	# 8	850'			
<u>PRIMARY POWER</u>				CITY OF FMN	
<u>DISTANCE TO POWER</u>				900'	
<u>UNDERGROUND</u>					
<u>PUMPJACK</u>					
<u>WATER PUMP</u>					

COMMENTS

install Breaker - plow UGAC to loc(900 ft - install load center at entrance for other well
(not drillid) - install rectifier system - some sandstone on road way -
install load center at takeoff loc (OR) come from existing meter pole
NOTE additional line crossings

BURLINGTON RESOURCES OIL AND GAS COMPANY LP
RIDDLE A 2B

895' FSL, 1485' FEL

SECTION 1, T-29-N, R-9-W, N.M.P.M.,
SAN JUAN COUNTY, NEW MEXICO

NAD 83 LAT.: 36.757909°N LONG.: 107.725257° W

ELEV.: 6339 NAVD88

NEW ACCESS 180.9'

DRIVING DIRECTIONS TO BROG RIDDLE A 2B.

DRIVING DIRECTIONS START FROM BLOOMFIELD, N.M. AT
INTERSECTION OF HWY. 64 AND HWY. 550.

- GO 16.8 MI. EAST ON HWY. 64, TURN LEFT AT TOP OF
MANZANARES CANYON.
- GO 0.2 MI. NORTH EAST, TURN LEFT, TOWARDS
WILLIAMS BOOSTER STATION.
- GO 2.7 MI. NORTH, THEN WEST ALONG TOP OF MESA,
TURN RIGHT.
- GO 0.3 MI. NORTH, TURN LEFT AT WELL PAD.
- GO 0.2 MI. NORTH TO BEGINNING OF 180.9' NEW ACCESS
ROAD AND TO PROPOSED WELL STAKE.

N:\BURLINGTON\

PROJECT PROPOSAL - New Drill / Sidetrack

RIDDLE A 2B

DEVELOPMENT

Lease:		AFE #: WAN.CDR.7386		AFE \$: 533,320.58	
Field Name: hBR_SAN JUAN		Rig: H&P Rig 282		State: NM	County: SAN JUAN
Geologist:		Phone:		Geophysicist: Phone:	
Geoscientist: Riley, Brook		Phone: +1 505-324-6108		Prod. Engineer: Phone:	
Res. Engineer: McKee, Cory J		Phone: +1 505-326-9826		Proj. Field Lead: Phone:	

Primary Objective (Zones):

Zone	Zone Name
RON	BLANCO MESAVERDE (PRORATED GAS)

Location: Surface Datum Code: NAD 27

Latitude: 36.757904	Longitude: -107.724643	X:	Y:	Section: 01	Range: 009W
Footage X: 1485 FEL	Footage Y: 895 FNL	Elevation: 6339	(FT)	Township: 029N	
Tolerance:					

Location Type: Restricted Start Date (Est.): 1/1/2008 Completion Date: Date In Operation:

Formation Data: Assume KB = 6354 Units = FT

Formation Call & Casing Points	Depth (TVD in Ft)	SS (Ft)	Depletion (Yes/No)	BHP (PSIG)	BHT	Remarks
Surface Casing	200	6154	<input type="checkbox"/>			12-1/4" hole. 200', 9 5/8" 32.3 ppf, H-40, STC casing. Cement with 159 cuft. Circulate cement to surface.
OJO ALAMO	1836	4518	<input type="checkbox"/>			
KIRTLAND	2026	4328	<input type="checkbox"/>			
FRUITLAND	2529	3825	<input type="checkbox"/>			Possible Gas
PICTURED CLIFFS	3001	3353	<input type="checkbox"/>			
LEWIS	3196	3158	<input type="checkbox"/>			
Intermediate Casing	3296	3058	<input type="checkbox"/>			8 3/4" Hole. 7", 20 ppf, J-55, STC Casing. Cement with 745 cuft. Circulate cement to surface.
HUERFANITO BENTONITE	3736	2618	<input type="checkbox"/>			
CHACRA	3964	2390	<input type="checkbox"/>			
MASSIVE CLIFF HOUSE	4597	1757	<input type="checkbox"/>	277		Gas
MENEFEE	4777	1577	<input type="checkbox"/>			
MASSIVE POINT LOOKOUT	5185	1169	<input type="checkbox"/>			
MANCOS	5349	1005	<input type="checkbox"/>			
Total Depth	5415	939	<input type="checkbox"/>			6-1/4" Hole. 4-1/2" 10.5, J-55, STC/LTC casing. Cement with 294 cuft. Circulate a minimum of 100' inside the previous casing string.

Reference Wells:

Reference Type	Well Name	Comments
Intermediate	State COM R 14A	
Intermediate	RiddleA #717	

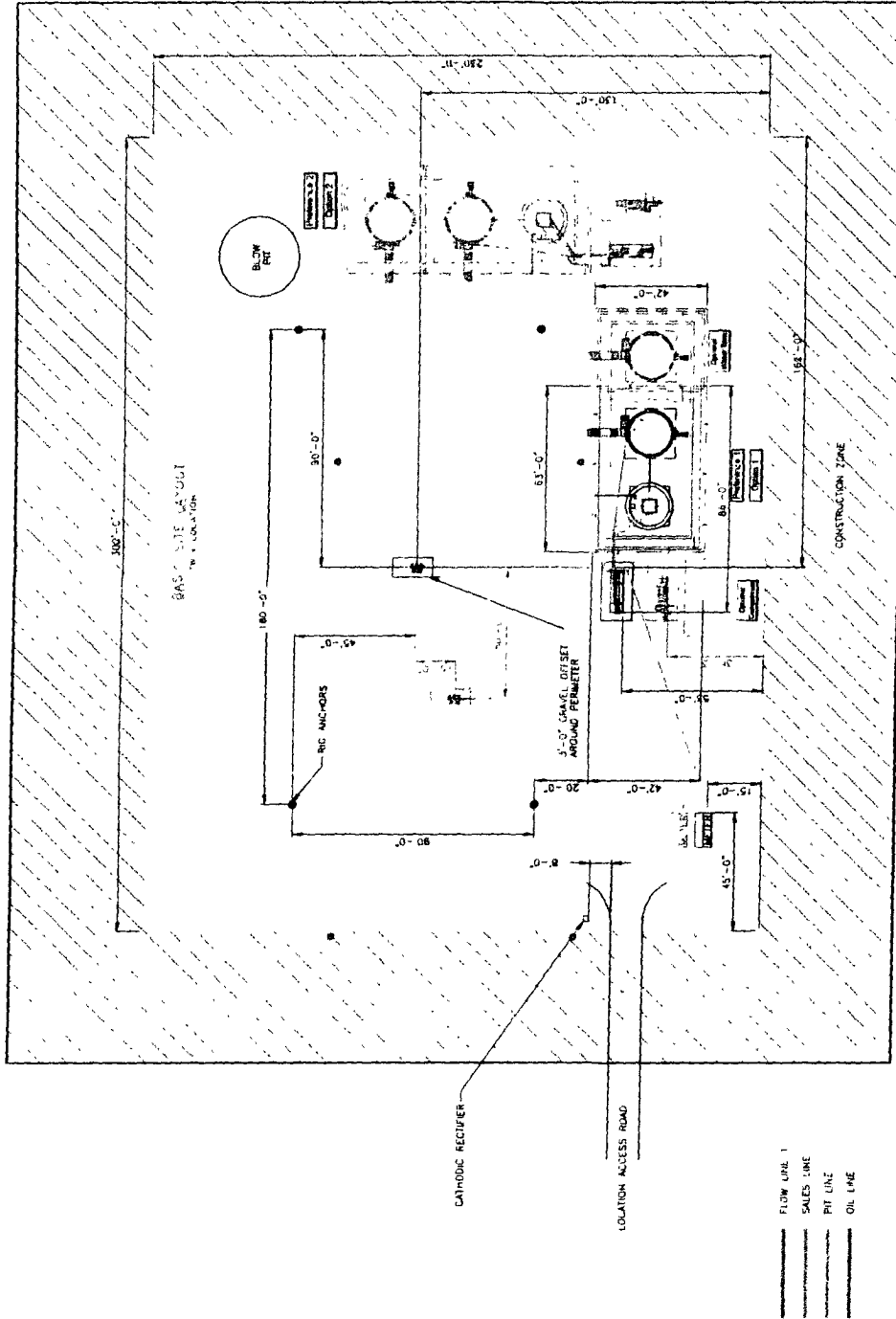
Logging Program:

Intermediate Logs: ☐ Log only if show ☐ GR/ILD ☐ Triple Combo

TD Logs: ☐ Triple Combo ☐ Dipmeter ☐ RFT ☐ Sonic ☐ VSP ☐ TDT ☒ Other

Additional Information:

Printed on: 6/4/2008 1:08:04 PM



SHEET 1 OF 5

CONOCO/Phillips HIGH PRESSURE 3 PHASE FACILITY DIAGRAM- SITE LAYOUT										CONOCO/Phillips SAN JUAN BUSINESS UNIT HP 3 PHASE - REV1									
REFERENCE DRAWINGS										DATE									
DESCRIPTION										DATE									
PROCESS										DATE									
BY CHANGE										DATE									
BY										DATE									
BY										DATE									
BY										DATE									
BY										DATE									
BY										DATE									
BY										DATE									
BY										DATE									
BY										DATE									
BY										DATE									
BY										DATE									
BY										DATE									
BY										DATE									
BY										DATE									
BY										DATE									
BY										DATE									
BY										DATE									
BY										DATE									
BY										DATE									
BY										DATE									
BY										DATE									
BY										DATE									
BY										DATE									
BY										DATE									
BY										DATE									
BY										DATE									
BY										DATE									
BY										DATE									
BY										DATE									
BY										DATE									
BY										DATE									
BY										DATE									
BY										DATE									
BY										DATE									
BY										DATE									
BY										DATE									
BY										DATE									
BY										DATE									
BY										DATE									
BY										DATE									
BY										DATE									
BY										DATE									
BY										DATE									
BY										DATE									
BY										DATE									
BY										DATE									
BY										DATE									
BY										DATE									
BY										DATE									
BY										DATE									
BY										DATE									
BY										DATE									
BY										DATE									
BY										DATE									
BY										DATE									
BY										DATE									
BY										DATE									
BY										DATE									
BY										DATE									
BY										DATE									
BY										DATE									
BY										DATE									
BY										DATE									
BY										DATE									
BY										DATE									
BY										DATE									
BY										DATE									
BY										DATE									
BY										DATE									
BY										DATE									
BY										DATE									
BY										DATE									
BY										DATE									
BY										DATE									
BY										DATE									
BY										DATE									
BY										DATE									
BY										DATE									
BY										DATE									
BY										DATE									
BY										DATE									
BY										DATE									
BY										DATE									
BY										DATE									
BY										DATE									
BY										DATE									
BY										DATE									
BY										DATE									
BY										DATE									
BY										DATE									
BY										DATE									
BY										DATE									
BY										DATE									
BY										DATE									
BY										DATE									
BY										DATE									
BY										DATE									
BY										DATE									
BY										DATE									
BY										DATE									
BY										DATE									
BY										DATE									
BY										DATE									
BY										DATE									
BY										DATE									
BY										DATE									
BY										DATE									
BY										DATE									
BY										DATE									
BY										DATE									
BY										DATE									
BY										DATE									
BY										DATE									
BY										DATE									
BY										DATE									
BY										DATE									
BY										DATE									
BY										DATE									
BY										DATE									
BY										DATE									
BY										DATE									
BY										DATE									
BY										DATE									
BY										DATE									
BY										DATE									
BY										DATE									
BY										DATE									
BY										DATE									
BY										DATE									
BY										DATE									
BY										DATE									
BY										DATE									
BY										DATE									
BY										DATE									
BY										DATE									
BY										DATE									
BY										DATE									
BY										DATE									
BY										DATE									
BY										DATE									
BY										DATE									
BY										DATE									
BY										DATE									
BY										DATE									
BY										DATE									
BY										DATE									
BY										DATE									
BY										DATE									
BY										DATE									
BY										DATE									
BY										DATE									
BY										DATE									
BY										DATE									
BY										DATE									
BY										DATE									
BY										DATE									
BY										DATE									
BY										DATE									
BY										DATE									
BY										DATE									
BY										DATE									
BY										DATE									
BY										DATE									
BY										DATE									
BY										DATE									
BY										DATE									
BY										DATE									
BY										DATE									
BY										DATE									
BY										DATE									
BY										DATE									
BY										DATE									
BY										DATE									
BY										DATE									
BY										DATE									
BY										DATE									
BY										DATE									
BY										DATE									
BY										DATE									
BY										DATE									
BY										DATE									
BY										DATE									
BY										DATE									
BY										DATE									
BY										DATE									
BY										DATE									
BY										DATE									
BY										DATE									
BY										DATE									
BY										DATE									
BY										DATE									
BY										DATE									
BY										DATE									
BY										DATE									
BY										DATE									
BY										DATE									
BY										DATE									
BY										DATE									
BY										DATE									
BY										DATE									
BY										DATE									
BY</																			

BURLINGTON RESOURCES OIL AND GAS COMPANY LP

RIDDLE A 2B
895' FSL, 1485' FEL
SECTION 1, T-29-N, R-9-W, N.M.P.M.,
SAN JUAN COUNTY, NEW MEXICO
NAD 83 LAT.: 36.757909°N LONG.: 107.725257° W
ELEV.: 6339 NAVD88
NEW ACCESS 180.9'

DRIVING DIRECTIONS TO BROG RIDDLE A 2B.

DRIVING DIRECTIONS START FROM BLOOMFIELD, N.M. AT
INTERSECTION OF HWY. 64 AND HWY. 550.

- GO 16.8 MI. EAST ON HWY. 64, TURN LEFT AT TOP OF MANZANARES CANYON.
- GO 0.2 MI. NORTH EAST, TURN LEFT, TOWARDS WILLIAMS BOOSTER STATION.
- GO 2.7 MI. NORTH, THEN WEST ALONG TOP OF MESA, TURN RIGHT.
- GO 0.3 MI. NORTH, TURN LEFT AT WELL PAD.
- GO 0.2 MI. NORTH TO BEGINNING OF 180.9' NEW ACCESS ROAD AND TO PROPOSED WELL STAKE.