

UNITED STATES  
DEPARTMENT OF INTERIOR  
BUREAU OF LAND MANAGEMENT

RCVD SEP 12 '08  
OIL CONS. DIV.  
DIST. 3

FORM APPROVED  
Budget Bureau No. 1004-0135  
Expires: March 31, 1993

SEP 08 2008  
FARMINGTON

SUNDRY NOTICE AND REPORTS ON WELLS

Do not use this form for proposals to drill or to deepen or reentry to a different reservoir. Use "APPLICATION FOR PERMIT TO DRILL" for permit for such proposals

5. Lease Designation and Serial No.  
Rosa Unit #233A  
6. If Indian, Allottee or Tribe Name

7. If Unit or CA, Agreement Designation

SUBMIT IN TRIPLICATE

1. Type of Well  
Oil Well ☒ Gas Well ☐ Other ☐

8. Well Name and No.  
ROSA UNIT #233A

2. Name of Operator  
WILLIAMS PRODUCTION COMPANY

9. API Well No.  
30-039-29501

3. Address and Telephone No.  
PO BOX 3102 MS 25-4, TULSA, OK 74101 (918) 573-3046

10. Field and Pool, or Exploratory Area  
BASIN FRUITLAND COAL

4. Location of Well (Footage, Sec., T., R., M., or Survey Description)  
1920' FSL & 1530' FEL, NW/4 SE/4 SEC 30-T31N-R05W

11. County or Parish, State  
RJO ARRIBA, NM

CHECK APPROPRIATE BOX(s) TO INDICATE NATURE OF NOTICE, REPORT, OR OTHER DATA

TYPE OF SUBMISSION

TYPE OF ACTION

Notice of Intent

X Subsequent Report

Final Abandonment

Abandonment  
Recompletion  
Plugging Back  
Casing Repair  
Altering Casing  
Other PUMP REPAIR

Change of Plans  
New Construction  
Non-Routine Fracturing  
Water Shut-Off  
Conversion to Injection  
Dispose Water  
(Note: Report results of multiple completion on Well Completion or Recompletion Report and Log form.)

13. Describe Proposed or Completed Operations (Clearly state all pertinent details, and give pertinent dates, including estimated date of starting any proposed work. If well is directionally drilled, give subsurface locations and measured and true vertical depths for all markers and zones pertinent to this work.)\*

08-26-2008

RD R&E from Rosa 100E to Rosa 233A, MIRU. Set up w/ rig mast. NU w/ circ pmp. ND w/ pump jack. Stacked out w/ rods & attempted to fill tbg w/ fluid. Unable to fill. Unseated pump -- pump drug for first 7'. Attempted to reseat pump - pump would not go back down hole -- indicating fill inside tubing. TOH w/ pump & rods. Pmp travel freely w/ thin mud like coating on outside. Bled dwn csg. ND w/ prod head. NU w/ BOP and work platform. Function tst BOP. Unland tbg & remove tbg hgr. TOH w/ 5 stds tbg - removed SS chem cap tubing from outside of tbg. TDH w/ tbg -- tag for fill. Tagged at 3315' = 5' fill. Tbg was landed at 3317' and pbtd @ 3320'. TUH w/ 5 stds tbg & made well safe for night.

08-27-2008

Csg = 300 psi - BD to FB tnk. TOH w/ 27/8" PS tbg - meas out of hole. Recovered 100 jts 27/8 x 8-eue tbg = 3260'. Tbg has some corrosion at btm of pins - just below threads. Made up notched collar - f-nipple w/ ret standing valve in seat. TIH w/ PS tbg - press testing at 1000# -- loc 5 leaks in the first 10 jts of tbg tested. Ordered out float to lay down tbg & new PS tbg. TOH w/ tbg & ret standing valve. TIH w/ PS tbg, wait on float from Farmington. Float arrived, TOH w/ old 27/8" PS tbg - laid down in sgls. Wait on new PS tbg -- 2 1/2 hour wait at Tubascope yard. Tbg arrived, made up 27/8" notched collar - TIH w/ same on new 27/8" PS tbg - picked tbg up in singles - meas and rabbited same. Hung tbg off at 3200', made well safe for night.

08-28-2008

300# csg - BD to FB tank. TDH w/ tbg - tag fill @ 3315' = 5' fill. NU w/ AP - brk circ w/ 10BPH A/S/CI in 25 min @ 400#, disp 20 bbls form wtr w/ air. Circ coal fines from 3315' to PBTD @ 3320' - circ clean & made SS. ND w/ AP, TOH w/ NC and tbg, made up MA w/ 2.28" F-Nip & TIH w/ same on new 2 7/8" PS tbg. Strapped 1/4" SS chem cap tbg to outside of top 225' PS tbg. Inst Chem adap tbg hgr & land tbg, OA at 3317' = 3' off PBTD. ND w/ WP & BOP, NU w/ B1 flange & prod head. Rig for rods, TIH w/ new 2 1/2" x 1 1/4" pump & rods, space pump. Fill tbg w/ wtr, press test @ 500# - solid. Stroke pump to 500# - good action, NU w pump jack. Hung on for prod, LD w/ rig mast & clean loc. Load out w/ all rig equip. Move off loc w/ rig & equip.

14. I hereby certify that the foregoing is true and correct

Signed

Rachel Lippert

Title Engineering Technician

Date September 2, 2008

(This space for Federal or State office use)

Approved by

Title

Date

Conditions of approval, if any:

ACCEPTED FOR RECORD

SEP 10 2008

FARMINGTON FIELD OFFICE

NMOCD

**ROSA UNIT #233A  
BASIN FRUITLAND COAL**

Surface Location:

1920' FSL and 1530' FEL  
NW/4 SE/4 Sec 30(J), T31N, R05W  
Rio Arriba, NM

Bottom Hole Location:

1979' FSL and 1002' FEL  
NE/4 SE/4 Sec 30(I), T31N, R05W  
Rio Arriba, NM

Elevation: 6398' GR  
API # 30-039-29501

Spud: 05/15/05

Completed: 07/21/05

1<sup>st</sup> Delivered: 07/29/05

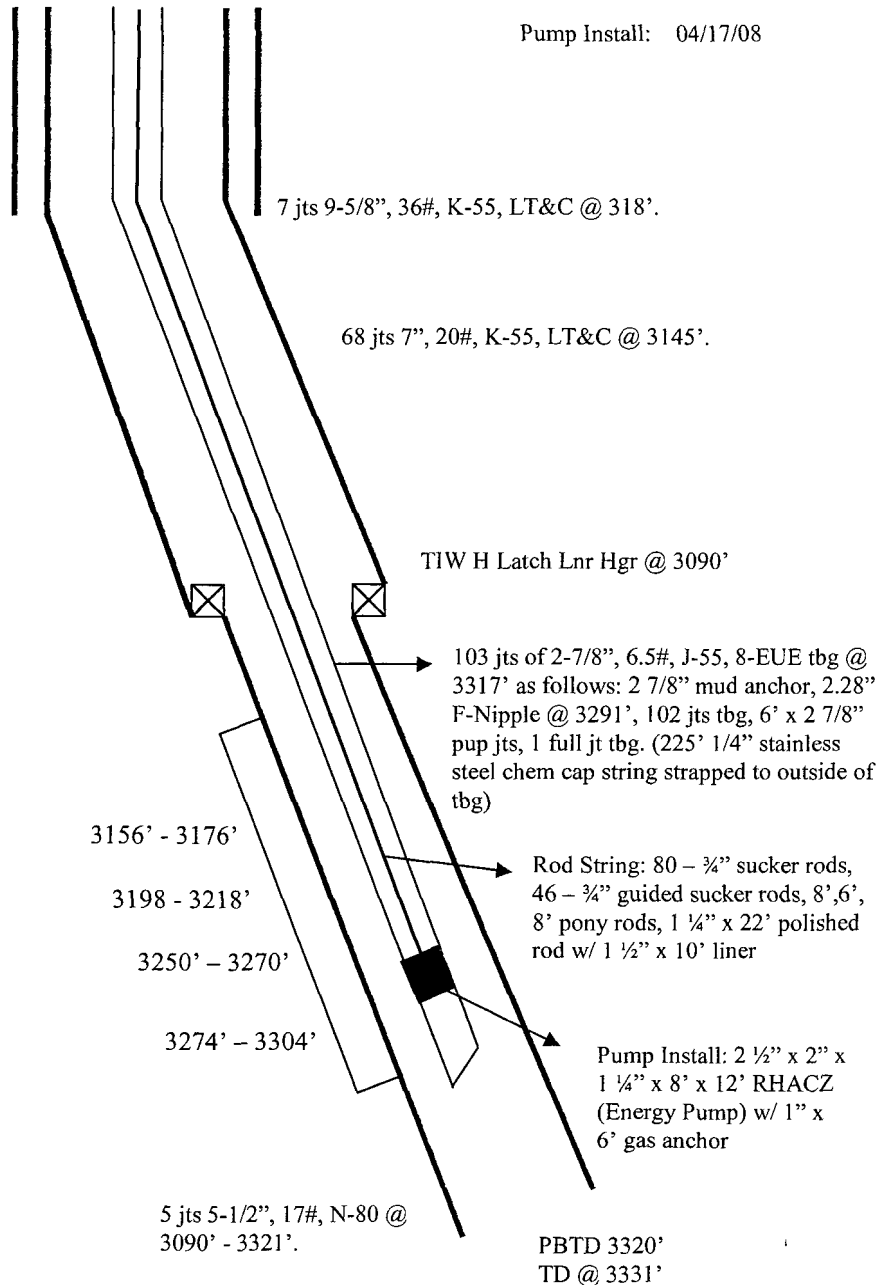
Pump Install: 04/17/08

Pumping Unit  
Lufkin 114-143-64

Top	MD Depth	TVD Depth
Ojo Alamo	2580'	2535'
Kirtland	2688'	2640'
Fruitland	3080'	3025'
Base of Coal	3310'	3255'
Pictured Cliffs	3315'	3260'

0.45", 4 spf  
360 holes total

Open hole from 6-1/4" to 9-1/2"  
from 3150' to 3322'



Hole Size	Casing	Cement	Volume	Top of Cmt
12-1/4"	9-5/8", 36#	165 sx	233 cu. ft.	Surface
8-3/4"	7", 20#	550 sx	1120 cu. ft.	Surface
6-1/4"	5-1/2", 17#	Did Not Cmt		