

**UNITED STATES
DEPARTMENT OF THE INTERIOR
BUREAU OF LAND MANAGEMENT**

RECEIVED**AUG 27 2008**Bureau of Land Management
Farmington Field Office

Sundry Notices and Reports on Wells

- | | |
|--|---|
| <p>1. Type of Well
GAS</p> <p>2. Name of Operator
Burlington Resources Oil & Gas Company LP</p> <p>3. Address & Phone No. of Operator
PO Box 4289, Farmington, NM 87499 (505) 326-9700</p> <p>4. Location of Well, Footage, Sec., T, R, M

Unit C (NENW), 990' FNL & 1650' FWL, Section 19, T27N R9W, NMPM</p> | <p>5. Lease Number
NM-02861</p> <p>6. If Indian, All. or Tribe Name</p> <p>7. Unit Agreement Name</p> <p>8. Well Name & Number</p> <p>9. Lodewick #9
API Well No.
30-045-06422</p> <p>10. Field and Pool
Basin Dakota</p> <p>11. County and State
San Juan Co., NM</p> |
|--|---|

12. CHECK APPROPRIATE BOX TO INDICATE NATURE OF NOTICE, REPORT, OTHER DATA**Type of Submission**☒ Notice of Intent☐ Subsequent Report☐ Final Abandonment**Type of Action**☐ Abandonment☐ Recompletion☐ Plugging☐ Casing Repair☐ Altering Casing☐ Change of Plans☐ New Construction☐ Non-Routine Fracturing☐ Water Shut off☐ Conversion to Injection☒ Other - P & A

RCVD SEP 2 '08
OIL CONS. DIV.
DIST. 3

13. Describe Proposed or Completed Operations

Burlington Resources requests to Plug and Abandon the subject well according to the attached procedure.

Attached - WB diagram

14. I hereby certify that the foregoing is true and correct.Signed Tracey N. Monroe Tracey N. Monroe Title Staff Regulatory Technician Date 8/27/08

(This space for Federal or State Office use)

APPROVED BY Original Signed: Stephen Mason Title _____ Date AUG 29 2008

CONDITION OF APPROVAL, if any:

Title 18 U.S.C. Section 1001, makes it a crime for any person knowingly and willfully to make any department or agency of the United States any false, fictitious or fraudulent statements or representations as to any matter within its jurisdiction

NMOC

ConocoPhillips
Lodewick 9 (DK)
Plug and Abandon
Lat 36° 33' 54.00" N Long 107° 49' 55.85" W

Prepared By: A. Bari

Date: 8/25/2008

Scope of work: Due to poor integrity of the casing and multiple casing leaks, it is recommended to Plug and Abandon the entire wellbore in the Lodewick 9 well.

WELL DATA:

API: 300-450-6422

Location: 990' FNL and 1650' FWL, Unit C, Section 19, T 27N – R 09W

PBTD: 6965' **ID:** 7057' currently CIBP set at 6772'

Perforations: 6822' – 6944' (DK)

<u>Casing:</u>	<u>OD</u>	<u>Wt., Grade</u>	<u>Connection</u>	<u>ID/Drift (in)</u>	<u>Depth</u>
	10-3/4"	35.75#	-	10.136/9.98	332'
	5-1/2"	17#, J-55	-	4.892/4.767	7057'

Well History/Justification: The Lodewick 9 well was drilled in 1959 as a Dakota producer. In April 2008, a completions rig moved on this well to remove the tubing, set a composite bridge plug @ 6532', and hold pressure while completing the Lodewick 13S (FC) well on the same pad. In June 2008, after completing Lodewick 13S well, the completions rig moved back on Lodewick 9 and detected bad casing from 2530' – 4605', and isolated casing leaks between 2505' – 3470'. The rig was able to drillout CBP @ 6532', and chased it down to 6812'. On June 28, 2008, BLM was notified regarding casing leak and received verbal approval to set a CIBP 50' +/- above the top Dakota perforations. In July 2008, a CIBP was set at 6772', which is 50' above the top Dakota perforations.

PLUG AND ABANDONMENT PROCEDURE

August 25, 2008

Lodewick 9

Basin Dakota

990' FNL and 1650' FWL, (Unit C) Section 19, T27N, R9W

San Juan County, New Mexico / API 300-450-6422

Lat 36° 33' 54.00" N Long 107° 49' 55.85" W

Note: All cement volumes use 100% excess outside pipe and 50' excess inside. The stabilizing wellbore fluid will be 8.3 ppg, sufficient to balance all exposed formation pressures. All cement will be Class B, mixed at 14.8 ppg with a 1.18 cf/sx yield.

1. This project requires the Operator to obtain an approved NMOCD C-144 CLEZ Closed-Loop System Permit for the use of an A-Plus steel tank to handle waste fluids circulated from the well and cement wash up.
2. Install and test location rig anchors. Comply with all NMOCD, BLM, and Operator safety regulations. MOL and RU daylight pulling unit. Conduct safety meeting for all personnel on location. Record casing, tubing and bradenhead pressures. NU relief line and blow down well. Kill well with water as necessary and at least pump tubing capacity of water down the tubing. ND wellhead and NU BOP. Function test BOP.
3. Rods: Yes____, No X, Unknown____.
Tubing: Yes____, No X, Unknown____, Size____, Length____.
Packer: Yes____, No X, Unknown____, Type____.
If this well has rods or a packer, then modify the work sequence in step #2 as appropriate.
4. **Plug #1 (Dakota perforations and top, 6772' – 6672')**: RIH with tubing and tag existing CIBP at 6772'. Load casing with water and circulate well clean. Note: casing will not pressure test, leaks. Mix and pump 17 sxs Class B cement and spot a balanced plug above CR to isolate the Dakota interval. PUH.
6073' 5973'
5. **Plug #2 (Gallup top, 5961' – 5861')**: Mix 17 sxs Class B cement and spot a balanced plug inside casing to cover the Gallup top. PUH.
3988' 3888'
6. **Plug #3 (Mesaverde top, 4000' – 3900')**: Mix 17 sxs Class B cement and spot a balanced plug inside casing to cover the Mesaverde top. PUH.
7. **Plug #4 (Pictured Cliffs and Fruitland tops, 2420' – 2054')**: Mix 48 sxs Class B cement and spot a balanced plug inside casing only to cover the PC and Fruitland tops. POOH. Do not plug outside the casing across Pictured Cliffs and Fruitland Coal to protect the reserves and avoid formation damage on the Lodewick 13S well, which was recently drilled and completed on the same pad.
1648' 1390'
8. **Plug #5 (Kirtland and Ojo Alamo tops, 1558' – 1260')**: Mix 40 sxs Class B cement and spot a balanced plug inside casing to cover Kirtland and Ojo Alamo tops. PUH

9. **Plug #6 (9.625" casing shoe, 382' – 0')**: Connect the pump line to the bradenhead valve. Pressure test the BH annulus to 300#; note the fluid volume to load. If the BH annulus tests, then mix 50 sxs Class B cement and spot a balanced plug inside the 5.5" casing to cover surface casing shoe, circulate cement to surface out the casing valve. TOH and LD the tubing. If the BH annulus does not test, then perforate at the appropriate depth to fill the bradenhead annulus to surface. TOH and LD tubing. Shut in well and WOC.
10. ND BOP and cut off wellhead below surface casing flange. Install P&A marker with cement to comply with regulations. RD, MOL and cut off anchors. Restore location per BLM stipulations.

Thank you

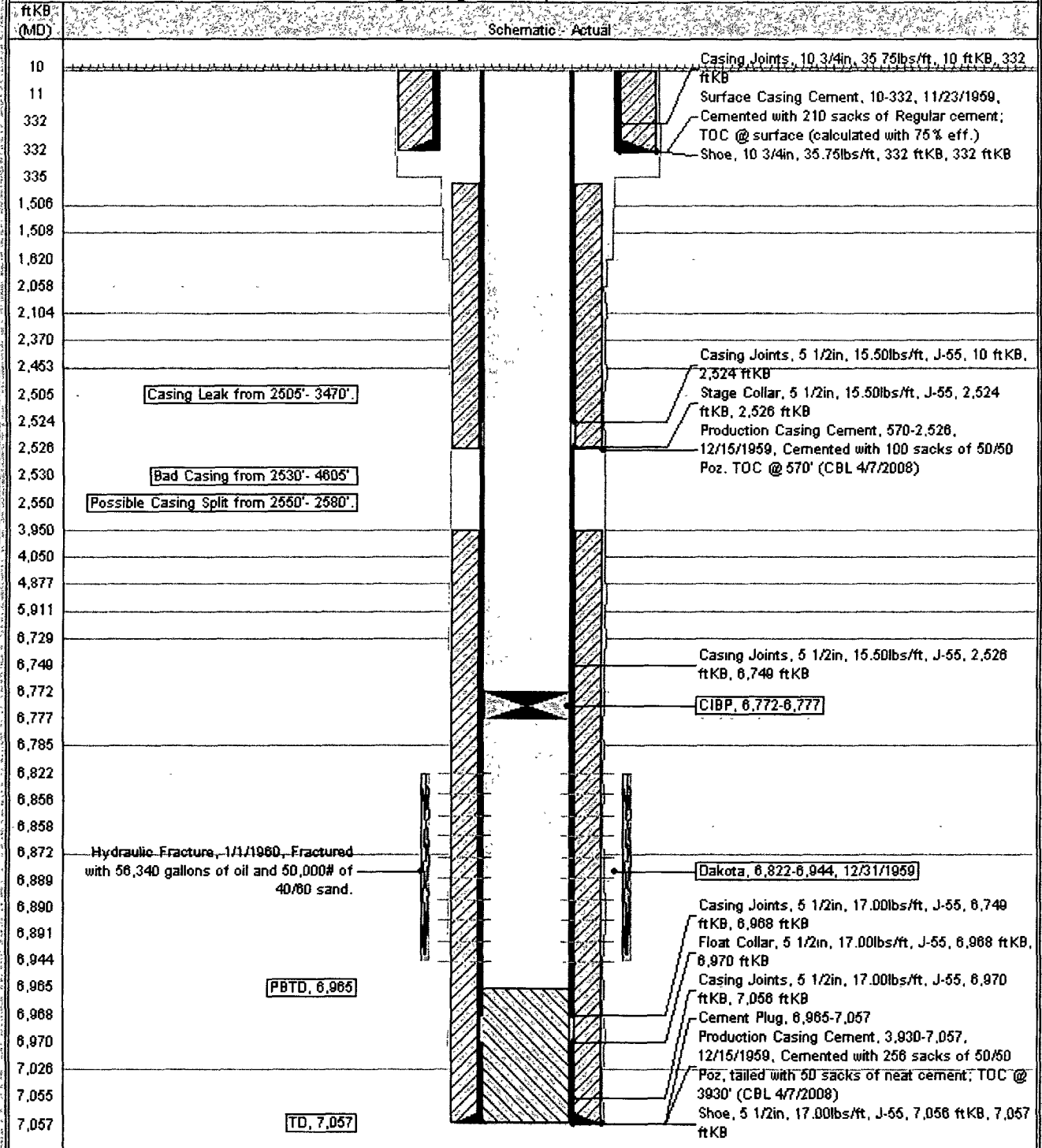
Current Schematic - Revised

ConocoPhillips

Well Name: LODEWICK #9

API# 0001	Surface Legal Location	Field Name	License No.	State/Province	Well Configuration Type	Edit
3004506422	NMPM,019-027N-009W	LODEWICK-PRODUCED GAS		NEW MEXICO		
Ground Elevation (ft)	Original KB/RT Elevation (ft)	KB-Ground Distance (ft)	KB-Casing Hanger Distance (ft)	KB-Subsiding Hanger Distance (ft)		
6,519.00	6,529.00	10.00				

Well Config: - Original Hole, 8/25/2008 3:37:55 PM



**UNITED STATES DEPARTMENT OF THE INTERIOR
BUREAU OF LAND MANAGEMENT
FARMINGTON DISTRICT OFFICE
1235 LA PLATA HIGHWAY
FARMINGTON, NEW MEXICO 87401**

Attachment to notice of
Intention to Abandon:

Re: Permanent Abandonment
Well: 9 Lodewick

CONDITIONS OF APPROVAL

1. Plugging operations authorized are subject to the attached "General Requirements for Permanent Abandonment of Wells on Federal and Indian Lease."
2. Farmington Office is to be notified at least 24 hours before the plugging operations commence (505) 599-8907.
3. The following modifications to your plugging program are to be made:
 - a) Place the Gallup plug from 6073' – 5973'.
 - b) Place the Mesaverde plug from 3988' – 3888'.
 - c) Place the Kirtland/Ojo Alamo plug from 1648' – 1390'.

You are also required to place cement excesses per 4.2 and 4.4 of the attached General Requirements.

Office Hours: 7:45 a.m. to 4:30 p.m.