

ROSA UNIT #187C

BLANCO MV/BASIN MANCOS/BASIN DK

Spud: 7-20-08

Completed: 9-18-08

1st Delivery: 9-22-08

Surface Location:

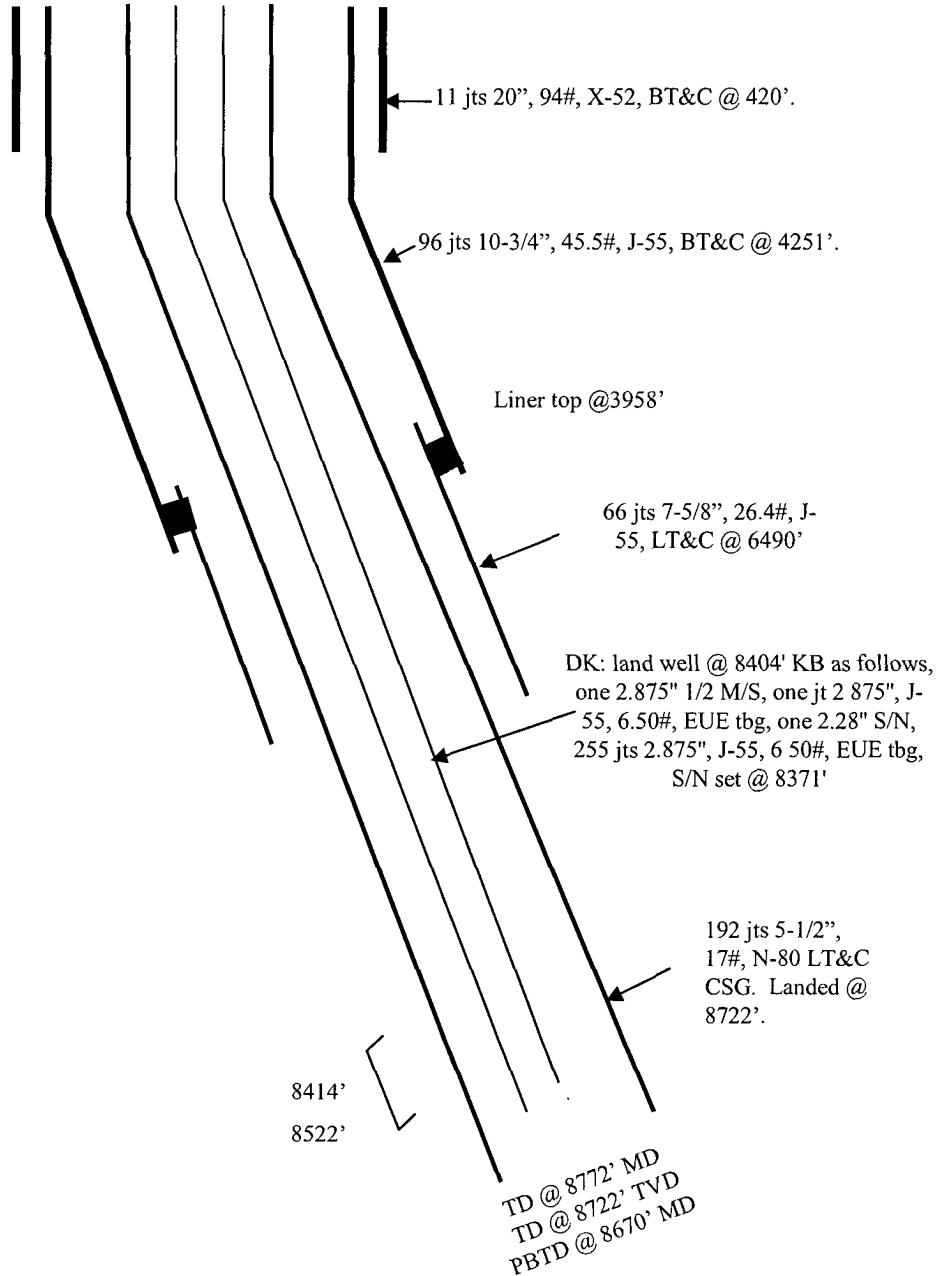
1090' FSL and 1145' FWL
SW/4 SW/4 Sec 21(M), T31N, R05W
Rio Arriba, NM

Bottom Hole Location:

1724' FSL and 922' FWL
NW/4 SW/4 Sec 21(L), T31N, R05W
Rio Arriba, NM

Elevation: 6801' GR
API # 30-039-30185

Top	MD Depth	TVD Depth
Pictured Cliffs	3728'	3681'
Lewis	4016'	3968'
Cliffhouse Ss.	5936'	5888'
Menefee	5980'	5932'
Point Lookout	6185'	6137'
Mancos	6687'	6639'
Dakota	8413'	8364'



Stimulation:

NOTE: Dakota only completed at this time

Dakota: 8414' – 8522' (54, 0.37" holes)
Frac with 9900# Lite Prop 108 14/40,
follow with 3080# Tempered LC 20/40.

Hole Size	Casing	Cement	Volume	Top of Cmt
26"	20", 94#	750 sxs	1207 cu. Ft.	Surface
14-3/4"	10-3/4", 45.5#	2660 sxs	5395 cu.ft.	Surface
9-7/8"	7-5/8", 26.4#	850 sxs	1068 cu.ft.	3958'
6-3/4"	5-1/2", 17#	408 sxs	956 cu.ft.	4000'