

UNITED STATES
DEPARTMENT OF INTERIOR
BUREAU OF LAND MANAGEMENT
Bureau of Land Management
Farmington Field Office

RECEIVED

OCT 29 2008

FORM APPROVED
Budget Bureau No. 1004-0135
Expires March 31, 1993

SUNDRY NOTICE AND REPORTS ON WELLS

Do not use this form for proposals to drill or to deepen or reentry to a different reservoir. Use "APPLICATION TO DRILL" for permit for such proposals

SUBMIT IN TRIPLICATE		5	Lease Designation and Serial No NMSF-078770
		6.	If Indian, Allottee or Tribe Name
		7	If Unit or CA, Agreement Designation Rosa Unit
1	Type of Well Oil Well Gas Well X Other	8.	Well Name and No. Rosa Unit 6C
2	Name of Operator WILLIAMS PRODUCTION COMPANY	9.	API Well No. 30-039-30181
3	Address and Telephone No. PO Box 640 Aztec, NM 87410-0640	10	Field and Pool, or Exploratory Area BLANCO MV/BASIN DK
4	Location of Well (Footage, Sec., T., R., M., or Survey Description) Sur 755' FSL & 880' FWL / BHL. 1650' FSL & 2310' FWL, Sec 27, T31N, R5W NMPM	11	County or Parish, State Rio Arriba, New Mexico

CHECK APPROPRIATE BOX(s) TO INDICATE NATURE OF NOTICE, REPORT, OR OTHER DATA

TYPE OF SUBMISSION	TYPE OF ACTION
<input checked="" type="checkbox"/> Notice of Intent	Abandonment
<input checked="" type="checkbox"/> Subsequent Report	Recompletion
<input type="checkbox"/> Final Abandonment	Plugging Back
	Casing Repair
	Altering Casing
	<input checked="" type="checkbox"/> Other <u>Completion</u>
	Change of Plans
	New Construction
	Non-Routine Fracturing
	Water Shut-Off
	Conversion to Injection
	Dispose Water
	(Note. Report results of multiple completion on Well Completion or Recompletion Report and Log form)

13 Describe Proposed or Completed Operations (Clearly state all pertinent details, and give pertinent dates, including estimated date of starting any proposed work. If well is directionally drilled, give subsurface locations and measured and true vertical depths for all markers and zones pertinent to this work)*

10-04-2008

Recap: AWS RIG #544 - Load out & road R&E from Rosa # 343-A to ROSA 6-C. Move in spot R&E Set up rig mast. ND w/ Xmas tree. NU w/ BOP - test rams & csg @ 1500# - solid 15 min test. MI & spot 27/8" PS tbg. TIH w/ 43/4" tri-cone bit on 27/8" PS tbg - picked up in sgls - meas & rabbited same, hung tubing off 8500', made well safe for night. RIG DOWN UNTIL MONDAY 10/6/08.

RCUD NOV 4 '08

OIL CONS. DIV.

DIST. 3

10-05-2008

Recap: Press test csg & BOP @ 1500# - solid 30 min test. Comp TIH w/ bit. Tag cmt @ 8850', NU w/ PS, break circ w/ KCL. Drill solid cmt to FC @ 8858'. Drill FC & cmt to 8894' = 9' above FS. Press test csg & BOP at 2000# - solid 30 min test. Circ clean. Clean rig pit of cmt. Fill pit w/ 2% KCL. Disp wellbore fluid w/ 210 bbls 2% KCL, ND w/ PS

10-06-2008

Recap: Csg = 0 psi. TOH w/ 27/8" prod string tbg -- laid down in singles. ND w/ working platform and BOP, NU w/ frac valve, SDFN. Loaded out with rig tools, LD with rig mast and cleaned location. Loaded out w/ rig and equipment, moved rig and equipment off location, moved to Rosa 375-A. FINAL REPORT FOR RIG 544

14 I hereby certify that the foregoing is true and correct

Signed

Larry Higgins

Title Drilling C O M

Date 10-29-08

ACCEPTED FOR RECORD

(This space for Federal or State office use)

Approved by

Title

Date
FARMINGTON FIELD OFFICE

Conditions of approval, if any

NMOC

Page 2 – RU #6C

10-13-2008

Recap: AWS RIG #656 - Load well w/ 20 bbls & Psi test csg & WH @ 5000 psi, Perf DK bttm up 3 SPF w/ 3 3/8" SFG f/ (8770' to 8878'), .34" Dia, 21" Pen & 10 Grm Chgs, 19 loc w/ 57 holes, all shots fired, BD DK @ 2695 psi, pump 2000 gals 15% HCL, 119 bbl pad, 2000 gals CL gel, Frac DK w/ 7500 lbs 100 mesh WS @ .25, .5 & .50 ppg, followed w/ 118,400 lbs 40/70 WS @ .50, .75, 1.0 & 1.25 ppg, prop carried in slick wtr, MIR = 50 bpm, AIR = 48.5 bpm, MTP = 4602 psi, ATP = 3707 psi, ISIP = 3043 psi, 5 min SI = 2845 psi, 10 min = 2780 psi, 15 min SI = 2692 psi, total fluid to recover = 3928 bbls, total FRW-14 = 147 gals, RD BJ Services, SICIP @ 16:00 hrs = 2400 psi, flow well to FB tank on 8/64" choke.

10-14-2008

Recap: Flow well to FB tank on 8/64" choke & record FB data, TRVL f/ Farmington to Rosa # 276, HTGSM, load out surface equip, Mobe rig f/ Rosa # 276 to location, approx 100 mile rig move due to bridge restrictions, spot in equip & rig ramp, try to get rig on ramp but loc was to muddy & rig kept slipping off, SD turn well over to FB crew, Flow well on 16/64" choke, @ midnight well had flowed 410 total bbls & Psi has climbed to 650 psi (see FB record above).

10-15-2008

Recap: Flow well to FB tank on 16/64" choke & record FB data, TRVL to loc, HTGSM, spot rig on ramp & RU over well, RU pump, pit & all hardline, ND frac Y & NUBOP stack, RU rig floor & prepare to TIH when well allows us, turn over to FB crew, flow well to FB tank on 16/64" choke f/ 0:00 to 18:00 hrs well had flowed 296 bbls & Psi = 750, we swapped chokes out & installed a 20/64" choke, @ midnight well had flowed 85 bbls, (approx 14 bph flow rate) pressure was @ 840 psi, last daily total = 410 bbls, 24 hr recovery = 377 bbls, total recovery = 787 bbls, total bbls to recover = 3928 bbls, left to recover = 3147 bbls.

10-16-2008

Recap: Flow well to FB tank on 20/64" choke, record FB data, TRVL to loc, HTGSM, perform maintenance on rig & equipment, wait to see if pressure drops & allows us to TIH, swap out to 24/64" choke @ 9:00, release rig crew & turn over to FB crew, last daily total = 787 bbls, 24 hr recovery = 204 bbls, total recovered = 991 bbls, total to recover = 3928 bbls, left to recover = 2937 bbls

10-17-2008

Recap: Flow well to FB tank on a 24/64" choke, record FB data, swap choke to 32/64" choke @ 9:00 = 135 psi @ csg, open well to 2" open line to FB tank, @ 11:00 - 65 psi, MU 1/2 M/S-Exp Chk, one jt 2 7/8" tbg & one 2.28" S/N, tally, rabbit & TIH w/ 191 jts (6110'), unload wtr off well @ 750 psi, TIH w/ 88 jts, (280 total jts) tag fill @ 8885', 8' below bottom perf, break circ w/ air only @ 1300 psi, unload wtr off well, TOO H w/ 4 stds tbg, dragging on weight indicator @ 80,000 lbs, set 1/2 M/S @ 8651', turn well over to FB crew, last daily total = 991 bbls, 24 hr recovery = 81 bbls, total recovered = 1072 bbls, total to recover = 3928 bbls, left to recover = 2856 bbls, flowing well to FB tank on 32/64" choke

10-18-2008

Recap: Flow well to FB tank on 32/64" choke, when checking choke for wash out it looks like it could be making some drip, pressure varied f/ 110 psi to 170 psi through out the night, last daily total = 1072 bbls, 24 hr recovery = 18 bbls, total recovered = 1090 bbls, total to recover = 3928 bbls, left to recover = 2838 bbls.

10-19-2008

Recap: Flow well to FB tank on 32/64" choke, when checking choke for wash out it looks like it could be making some drip, pressure varied f/ 110 psi to 170 psi through out the night, last daily total = 1090 bbls, 24 hr recovery = 63 bbls, total recovered = 1153 bbls, total to recover = 3928 bbls, left to recover = 2775 bbls.

10-20-2008

Recap: Flow well to FB tank on 32/64" choke & record FB data, TRVL to loc, HTGSM, unload wtr off well w/ air only @ 950 psi, tie back to single line & TIH w/ 4 stds tbg, set Exp Chk @ 8842', RU 2.5" P/S & PU 1 jt tbg, try to break circ w/ 12 bph a/s mist & popped off @ 2000 psi, RD P/S & TOO H w/ 30 jts tbg, try to break circ again w/ same results, TOO H w/ tbg & last 7 jts tbg were plugged w/ rust & sand, C/O tbg & Exp Chk, MU 1/2 M/S - Exp Chk, one jt tbg & one 2.28" S/N, TIH w/ 126 stds tbg (8015'), tie back to single line, TIH w/ 7 stds tbg (8460'), turn over to FB crew, flow well to FB tank on 32/64" choke & record FB data.

10-21-2008

Recap: Flow well to FB tank on 32/64" choke, TRVL to loc, HTGSM, unload wtr off well w/ air only @ 1100 psi, M/S is set @ 8460' & top perf is @ 8770', TIH w/ 10 singles & set 1/2 M/S @ 8770', tbg is dragging @ 40,000#, SW is 57,000#, RU 2.5" P/S & prepare to C/O fill, try to break circ w/ 12 bph a/s mist & foam unit popped off @ 2000 psi, contact Engineer about tbg drag in this crooked hole, decide to LD 1/2 of the J-55 tbg & replace w/ N-80 on top of string, Rd P/S, TOO H w/ tbg & LD 140 jts J-55 on float, watch WI for string weight differences, Exp Chk was plugged w/ approx 15' of rust & sand, MU 1/2 M/S w/o Exp Chk, one jt 2.875", J-55, 6.50#, EUE tbg, one 2.28" S/N, tally in derrick & TIH w/ 20 stds 2.875", J-55, 6.5#, EUE tbg, Flow well to FB tank on 32/64" choke.

10-22-2008

Recap: Flow well to FB tank on 32/64" choke & record FB data, SU equip, tally 2.875", J-55; 6.50# EUE tbg in derrick (140 total), start to PU N-80 tbg & floor hand dislocated middle finger, SD & do paper work & discuss incident w/ safety man, incident is 1st aid, tally, rabbit & TIH w/ old 2 7/8" N-80 WS (80 jts), set 1/2 M/S @ 7060', break circ w/ 12 bph a/s mist & extra corrosion inhibitor due to rust in pipe, unload wtr off well, TIH w/ 48 jts tbg & stack out @ 8605', try to PU on tbg & pull to 100,000 & would not come free, pump 15 bbls 2% KCL down csg & work tbg, pull free & LD 4 jts tbg, drain up pumps & lines, SDFN.

10-23-2008

Recap: SICIP = 750 psi, blow well down, RU 2.5" P/S, unload wtr off well @ 1300 psi, PU 4 jts 2 7/8" N-80 tbg & tag something @ 8605', break circ w/ 12 bph a/s mist w/ Corrosion Inhibitor, C/O 190' of fill f/ 8605' to 8795', work tbg after each jt & weight coming up = 100,000 lbs & going down = 40,000 lbs, after working each jt 4 or 5 times weight would = 90,000 & 45,000 lbs, pump 5 bbl to 7 bbl pad @ each connection to kill tbg, approx 45 min to break circ @ each connection, approx 1.5 hrs for each jt, 2.5" P/S will barely turn tbg while traveling up or down, PU 1 jt off bottom & run two 7 bbl sweeps, try to LD 5 jts & was pulling 100,000 +, pump 20 bbls down csg, install TIW valve & pull to 100,000 lbs.

10-24-2008

Recap TRVL to loc, HTGSM, SICIP = 1400 psi, SITP = 750 psi, blow well to FB tank Try to pull tbg & tbg was stuck @ 8761', unload wtr off well w/ air only @ 850 psi, start 12 bph a/s mist & work tbg @ 100,000 lbs for appr 1 hr & tbg started to move, LD 1 jt & tbg was stuck again, 2 5" P/S is not rotating due to crooked hole, break circ again & pull 11 jts startinn @ 100,000 lbs & ending @ 90,000 lbs, RD P/S & TOO H w/ 96 jts (5761'), weight dropped f/ 72,000 lbs to 56,000 lbs, change over to 2 lines & TOO H w/ 236 total jts, appr every 30 stds we would pump 10 bbl kill down tbg & well would unload every 40 mins, set 1/2 M/S @ 1310', install TIW, shut & lock rams, turn well over to FB crew, flow well to FB tank on 32/64" choke, record FB data

10-25-2008

Recap: Flow well to FB tank on a 32/64" choke, csg Psi = 150 psi, making very little wtr

Page 3 – RU #6C

10-26-2008

Recap: Flow well to FB tank on a 32/64" choke, csg Psi = 150 psi, making very little wtr

10-27-2008

Recap: Flow well to FB tank, TRVL to loc, HTGSM, TOO H w/ 17 stds tbg & inspect BHA, TIH w/ production string, flush sand out of S-curve three times while TIH, (for details see hourly report), TIH w/ 140 jts 2.875", J-55, 6.5#, EUE tbg & 132 jts 2.875" N-80 EUE tbg & tag fill or tight spot @ 8756', RU 2.5" P/S & break circ w/ air only @ 1350 psi, start up 12 bph a/s mist, C/O to 8890', run three 5 bbl sweeps, LD 16 jts N-80 tbg & blow well dry, **FLOW TEST: Duration = 1 hr, Test Method = pitot, 550 mcf p/day, Csg Psi = 12.5 oz, Tbg Psi = 0 psi, Gas Type = Dry, Gas Disposition = non flaring, Choke Size = 2" open line, all samples were dry, Land well @ 8376' KB as follows, one 1/2 M/S, one jt 2.875" J-55 tbg, one 2.28" S/N, 139 jts 2.875" J-55 tbg, 120 jts 2.875" N-80 tbg (260 total jts), S/N set @ 8343', RD rig floor, NDBOP stack & NUWH & test @ 3000 psi, unload wtr off well w/ air only @ 1400 psi, RD rig, pump, pit & all hardline, police location & SIWFN, TURN WELL OVER TO PRODUCTION,**

NOTE: DAKOTA ONLY COMPLETED AT THIS TIME

**ROSA UNIT #6C
BLANCO MV/BASIN DK**

Spud: 09/07/08
Completed: 10/27/08
1st Delivery: 0/0/00

Surface Location:
755' FSL and 880' FWL
SW/4 SW/4 Sec 27 (M), T31N, R05W
Rio Arriba, NM

Bottom Hole Location:
1714' FSL and 2424' FWL
NE/4 SW/4 Sec 27 (K), T31N, R05W
Rio Arriba, NM

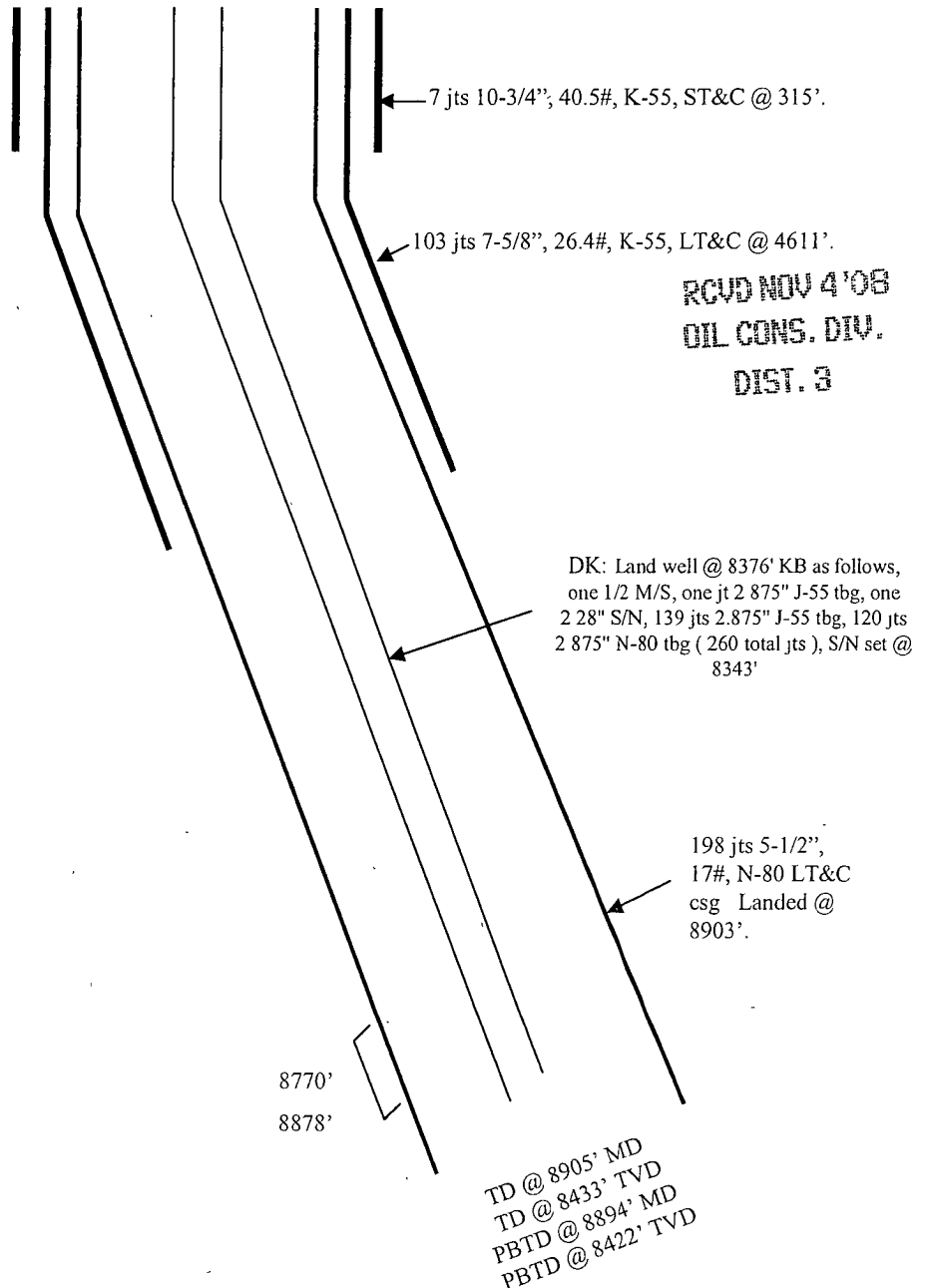
Elevation: 3782' GR
API # 30-039-30181

Top	MD Depth	TVD Depth
Pictured Cliffs	4143'	3674'
Lewis	4420'	3949'
Cliffhouse Ss.	6322'	5851'
Menefee	6366'	5895'
Point Lookout	6567'	6096'
Mancos	7034'	6563'
Dakota	8782'	8310'

Stimulation:

NOTE: Dakota only completed at this time

Dakota: 8770' – 8878' (57, 0.34" holes)
Frac with 7500# 100 mesh WS, follow
with 118,400# 40/70 WS.



RCVD NOV 4 '08
OIL CONS. DIV.
DIST. 3

Hole Size	Casing	Cement	Volume	Top of Cmt
14-3/4"	10-3/4", 40.5#	250 sxs	347 cu.ft.	Surface
9-7/8"	7-5/8", 26.4#	825 sxs	1669 cu.ft.	Surface
6-3/4"	5-1/2", 17#	180 sxs	443 cu.ft.	5200' CBL