

UNITED STATES
DEPARTMENT OF THE INTERIOR
BUREAU OF LAND MANAGEMENT

RECEIVED

APPLICATION FOR PERMIT TO DRILL, DEEPEN, OR PLUG BACK

1a. Type of Work DRILL	5. Lease Number NMSF081155 Unit Reporting Number 070 Farmington, NM
1b. Type of Well GAS	6. If Indian, All. or Tribe
2. Operator BURLINGTON RESOURCES Oil & Gas Company	7. Unit Agreement Name Allison Unit
3. Address & Phone No. of Operator PO Box 4289, Farmington, NM 87499 (505) 326-9700	8. Farm or Lease Name Allison Unit 9. Well Number 102S
4. Location of Well 2175' FSL, 1455' FEL Latitude 36° 56.9783'N, Longitude 107° 28.6613'W	10. Field, Pool, Wildcat Basin Fruitland Coal 11. Sec., Twn, Rge, Mer. (NMPM) J# Sec. 29, T-32-N, R-6-W API # 30-045- 31881
14. Distance in Miles from Nearest Town Ignacio 21 miles, Allison 9 miles	12. County San Juan 13. State NM
15. Distance from Proposed Location to Nearest Property or Lease Line 1455'	
16. Acres in Lease	17. Acres Assigned to Well 320 E/2
18. Distance from Proposed Location to Nearest Well, Drig, Compl, or Applied for on this Lease 1400'	
19. Proposed Depth 3357'	20. Rotary or Cable Tools Rotary
21. Elevations (DF, FT, GR, Etc.) 6430' GR	22. Approx. Date Work will Start
23. Proposed Casing and Cementing Program See Operations Plan attached	
24. Authorized by: <u><i>Reggie Cole</i></u> Regulatory/Compliance Supervisor	Date <u>8-19-03</u>

PERMIT NO. *Charlie Beecher* APPROVAL DATE
APPROVED BY *Charlie Beecher* TITLE ACTING AFM DATE 11/6/03

Archaeological Report to be submitted

Threatened and Endangered Species Report to be submitted

NOTE: This format is issued in lieu of U.S. BLM Form 3160-3

Title 18 U.S.C. Section 1001, makes it a crime for any person knowingly and willfully to make to any department or agency of the United States any false, fictitious or fraudulent statements or presentations as to any matter within its jurisdiction.

DRILLING OPERATIONS AUTHORIZED ARE
SUBJECT TO COMPLIANCE WITH ATTACHED
"GENERAL REQUIREMENTS".

OPERATOR

This action is subject to technical and
procedural review pursuant to 43 CFR 3165.3
and appeal pursuant to 43 CFR 3165.4

District I
Box 1980, Hobbs, NM 88241-1980
District II
PO Drawer DD, Artesia, NM 88211-0719

District III
1000 Rio Brazos Rd., Aztec, NM 87410

District IV
PO Box 2088, Santa Fe, NM 87504-2088

State of New Mexico
Energy, Minerals & Natural Resources Department

OIL CONSERVATION DIVISION
PO Box 2088
Santa Fe, NM 87504-2088

Form C-102
Revised February 21, 1994
Instructions on back
Submit to Appropriate District Office
State Lease - 4 Copies
Fee Lease - 3 Copies

☐ AMENDED REPORT

WELL LOCATION AND ACREAGE DEDICATION PLAT

*API Number 30-045- <u>31881</u>		*Pool Code 71629	*Pool Name Basin Fruitland Coal
*Property Code 6784	*Property Name ALLISON UNIT		*Well Number 102S
*OGRID No. 14538	*Operator Name BURLINGTON RESOURCES OIL & GAS COMPANY, LP		*Elevation 6430'

¹⁰ Surface Location

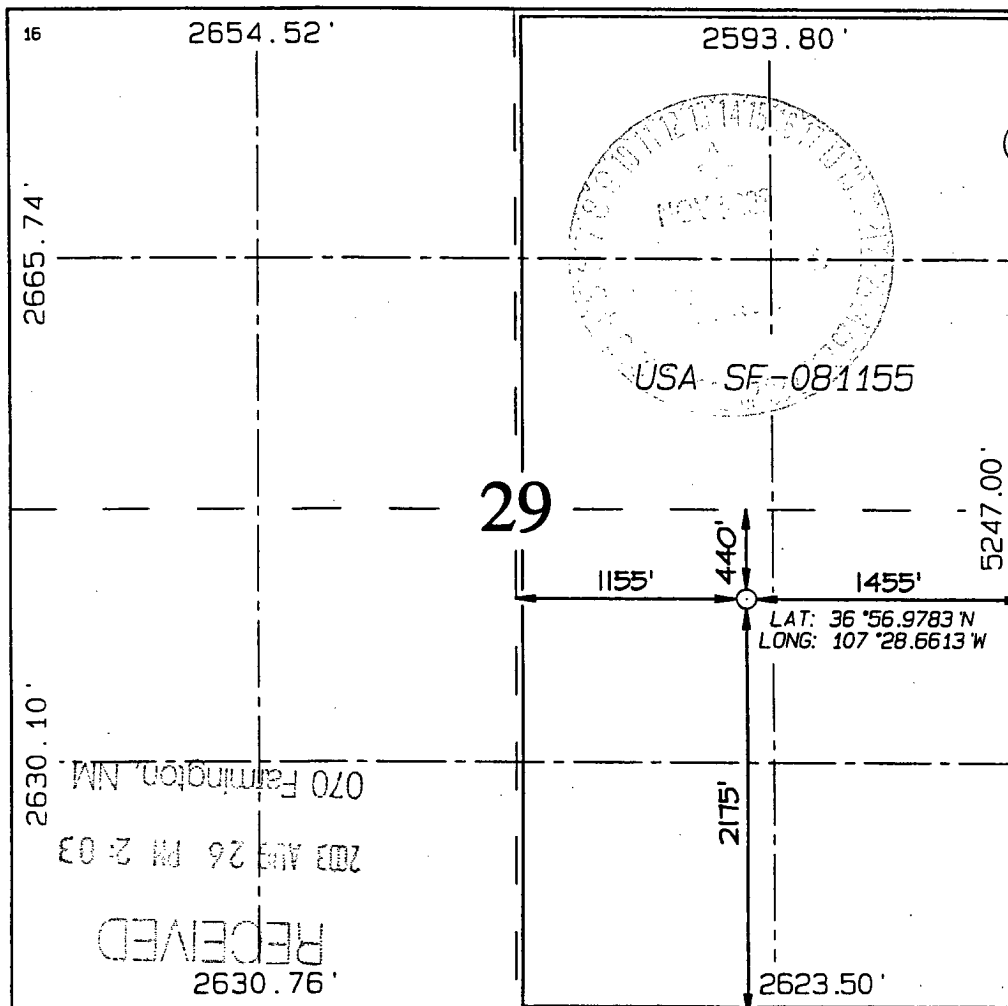
UL or lot no.	Section	Township	Range	Lot Idn	Feet from the	North/South line	Feet from the	East/West line	County
J	29	32N	6W		2175	SOUTH	1455	EAST	SAN JUAN

¹¹ Bottom Hole Location If Different From Surface

UL or lot no.	Section	Township	Range	Lot Idn	Feet from the	North/South line	Feet from the	East/West line	County

¹² Dedicated Acres E/320	¹³ Joint or Infill	¹⁴ Consolidation Code	¹⁵ Order No.
--	-------------------------------	----------------------------------	-------------------------

NO ALLOWABLE WILL BE ASSIGNED TO THIS COMPLETION UNTIL ALL INTERESTS HAVE BEEN CONSOLIDATED
OR A NON-STANDARD UNIT HAS BEEN APPROVED BY THE DIVISION



¹⁷ OPERATOR CERTIFICATION

I hereby certify that the information contained herein is true and complete to the best of my knowledge and belief

Peggy Cole
Signature

Peggy Cole

Printed Name
Regulatory Supervisor

Title
8-19-03

Date

¹⁸ SURVEYOR CERTIFICATION

I hereby certify that the well location shown on this plat was plotted from field notes of actual surveys made by me or under my supervision, and that the same is true and correct to the best of my belief.

Survey Date: SEPTEMBER 16, 2002

Signature and Seal of Professional Surveyor



JASON C. EDWARDS
Certificate Number 15269

OPERATIONS PLAN

Well Name: Allison Unit #102S
Location: 2175' FSL, 1455' FEL Section 29, T-32-N, R-6-W
Latitude 36° 56.9783' N, Longitude 107° 28.6613' W
San Juan County, NM
Formation: Basin Fruitland Coal
Elevation: 6430' GR

Formation:	Top	Bottom	Contents
Surface	San Jose	2304'	
Ojo Alamo	2304'	2430'	aquifer
Kirtland	2430'	2823'	
Fruitland	2823'	3048'	
Intermediate TD	3018'		
Fruitland Coal	3048'	3354'	gas
B/Basal Coal	3354'	3355'	gas
Pictured Cliffs	3355'		
Total Depth	3357'		

Logging Program: none
Mudlog: from 7" to TD
Coring Program: none

Mud Program:

Interval	Type	Weight	Vis.	Fluid Loss
0- 120'	Spud	8.4-9.0	40-50	no control
120-3018'	Non-dispersed	8.4-9.0	30-60	no control
3018-3357'	Air/Mist			

Casing Program (as listed, the equivalent, or better):

Hole Size	Depth Interval	Csg. Size	Wt.	Grade
12 1/4"	0' - 120'	9 5/8"	32.3#	H-40
8 3/4"	0' - 3018'	7"	20.0#	J-55
6 1/4"	3018' - 3357'	open hole		

Alternate Casing Program (as listed, the equivalent, or better):

Hole Size	Depth Interval	Csg. Size	Wt.	Grade
12 1/4"	0' - 120'	9 5/8"	32.3#	H-40
8 3/4"	0' - 3018'	7"	20.0#	J-55
6 1/4"	2978' - 3357'	5 1/2"	15.5#	J-55

Tubing Program:

0' - 3357'	2 3/8"	4.7#	J-55
------------	--------	------	------

Float Equipment: 9 5/8" surface casing - saw tooth guide shoe. Centralizers will be run in accordance with Onshore Order #2.

7" intermediate casing - guide shoe and self-fill float collar. Standard centralizers run every other joint above shoe. Two turbolizing type centralizers - one below and one into the base of the Ojo Alamo @ 2304'. Standard centralizers thereafter every fourth joint up to the base of the surface pipe.

Wellhead Equipment: 9 5/8" x 7" x 2 3/8" x 11" 2000 psi xmas tree assembly.

Cementing:

9 5/8" surface casing - cement with 27 sx Type III cement w/2% calcium chloride, and 0.25 pps celloflake (38 cu.ft. of slurry, bring cement to surface through 3/4" line) or equivalent. WOC 24 hours for pre-set holes or 8 hours for conventionally set holes before pressure testing or drilling out from under surface casing.

7" intermediate casing - lead w/261 sacks Premium Lite with 3% calcium chloride, 5 pps LCM-1, and 1/4#/sack flocele, 0.4% FL-52, & 0.4% SMS. Tail with 90 sacks Type III cmt with 1% calcium chloride, 1/4#/sack flocele and 0.2% FL-52 (680 cu.ft., 50% excess to circulate to surface).

5 1/2" liner - will not be cemented if run.

Note: If open hole logs are run, cement volumes will be based on 25% excess over caliper volumes.

BOP and tests:

Surface to intermediate TD - 11" 2000 psi (minimum) double gate BOP stack (Reference Figure #1). Prior to drilling out surface casing, test ~~rams~~ ^{BOP} to 600#/30 min.

Intermediate TD to Total Depth - 7 1/6" 2000 psi (minimum) double gate BOP stack (Reference Figure #2). Prior to drilling out intermediate casing, test blind rams and casing to 1500 psi for 30 minutes; all ~~pipe rams~~ ^{BOP} and casing to 1500 psi for 30 minutes each.

From surface to TD - choke manifold (Reference Figure #3).

Pipe rams will be actuated at least once each day and blind rams actuated once each trip to test proper functioning. An upper kelly cock valve with handle and drill string safety valves to fit each drill string will be maintained and available on the rig floor.

Additional information:

- * The Fruitland Coal formation will be completed.
- * Anticipated pore pressure for the Fruitland is less than 500 psi.
- * This gas is dedicated.
- * The east half of section 29 is dedicated to the Fruitland Coal.

Date: 8-22-2003

Drilling Engineer: James M. McCarthy

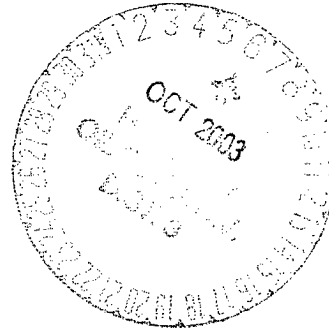
BURLINGTON RESOURCES

SAN JUAN DIVISION

September 5, 2003

(Certified Mail – Return Receipt Requested)

Re: Allison Unit #102S
Basin Fruitland Coal
2175'FSL, 1455'FEL Section 29, T-32-N, R-6-W
San Juan County, New Mexico



To the Affected Persons:

Burlington Resources Oil & Gas Company LP is submitting the enclosed Application for Permit to Drill to the appropriate regulatory agency(s) for approval. This well is located inside the High Productivity Area of the Basin-Fruitland Coal Pool as indicated on the attached plat. Notice is being made pursuant to New Mexico Oil Conservation Commission Order R-8768-F dated July 17, 2003.

The affected parties have twenty (20) days from receipt of this notice in which to file with the District Office of the New Mexico Oil Conservation Division written objection to the proposed Application for Permit to Drill.

Sincerely,

A handwritten signature in cursive script that reads "Tammy Wimsatt".

Tammy Wimsatt
Regulatory Specialist

7110 6605 9590 0006 8649

RETURN RECEIPT SERVICE	POSTAGE	\$0.37	POSTMARK OR DATE
	RESTRICTED DELIVERY FEE	\$0.00	
	CERTIFIED FEE	\$2.30	
	RETURN RECEIPT FEE	\$1.75	
	TOTAL POSTAGE AND FEE	\$4.42	
SENT TO:			
8/26/2003 1:39 PM		Code: FTC HPA Infill File:	
Williams Production Company One Williams Center PO BOX 3102 MS25-3 PO BOX 3102 MS25-3 Tulsa, OK 74101			
Allison Unit #1025			

PS FORM 3800



RECEIPT FOR CERTIFIED MAIL
NO INSURANCE COVERAGE PROVIDED
 NOT FOR INTERNATIONAL MAIL
 (SEE OTHER SIDE)