

UNITED STATES
DEPARTMENT OF THE INTERIOR
BUREAU OF LAND MANAGEMENT

Sundry Notices and Reports on Wells

1. Type of Well
GAS

202 OCT 31 PM 2:52

070 Farmington, NM

2. Name of Operator

BURLINGTON

RESOURCES OIL & GAS COMPANY LP

3. Address & Phone No. of Operator

PO Box 4289, Farmington, NM 87499 (505) 326-9700

4. Location of Well, Footage, Sec., T, R, M

2485' FNL, 2445' FWL, Sec.8, T-27-N, R-5-W, NMPM

5. Lease Number
NMSF-0793916. If Indian, All. or
Tribe Name

7. Unit Agreement Name

San Juan 27-5 Unit
8. Well Name & Number
San Juan 27-5 U #112F
9. API Well No.
30-039-26614
10. Field and Pool
Blanco MV/Basin DK
11. County and State
Rio Arriba Co, NM

12. CHECK APPROPRIATE BOX TO INDICATE NATURE OF NOTICE, REPORT, OTHER DATA

Type of Submission

Type of Action

☒ Notice of Intent☐ Abandonment☐ Change of Plans☐ Subsequent Report☒ Recompletion☐ New Construction☐ Final Abandonment☐ Plugging Back☐ Non-Routine Fracturing☐ Casing Repair☐ Water Shut off☐ Altering Casing☐ Conversion to Injection☒ Other - Commingle

13. Describe Proposed or Completed Operations

It is intended to recomple the subject well to the Mesaverde formation as follows:

1. Move in and rig up. Pull out of hole with production tubing.
2. Trip in hole with CIBP, set at 5800' to isolate Dakota perforations.
3. Perforate Point Lookout at approximately 5498'-5720'.
4. Fracture stimulate the Point Lookout with 100,000# of sand and 60 quality slick water foam. TOOH.
5. Trip in hole with CIBP, set at 5474' to isolate Point Lookout perforations.
6. Perforate the Cliff House and Menefee at approximately 4950'-5450'.
7. Fracture stimulate the Cliff House and Menefee with 100,000# of sand and 60 quality slick water foam.
8. Trip in hole with tubing, mill, and bit to drill out plugs and clean out to PBTD. TOOH.
9. Trip in hole with production tubing. Rig down.

Well will be completed as a Mesaverde and Dakota commingle. A down hole commingle application will be submitted.

CONDITIONS OF APPROVAL

Adhere to previously issued stipulations.

14. I hereby certify that the foregoing is true and correct.

Signed Nancy Olten Title Senior Staff Specialist Date 10/30/03

(This space for Federal or State Office use)

APPROVED BY Jim Loh Title Petr. Eng Date 11/4/03

CONDITION OF APPROVAL, if any:

District II
PO Drawer DD, Artesia, NM 88211-0719

OIL CONSERVATION DIVISION
PO Box 2088
Santa Fe, NM 87504-2088

District III
1000 Rio Brazos Rd., Aztec, NM 87410

District IV
PO Box 2088, Santa Fe, NM 87504-2088

☐ AMENDED REPORT

WELL LOCATION AND ACREAGE DEDICATION PLAT

API Number 30-039-26614		Pool Code 72319/71599	Pool Name Blanco Mesaverde/Basin Dakota
Property Code 7454	Property Name SAN JUAN 27-5 UNIT		Well Number 112F
OGRID No. 14538	Operator Name BURLINGTON RESOURCES OIL & GAS COMPANY		Elevation 6599

¹⁰ Surface Location

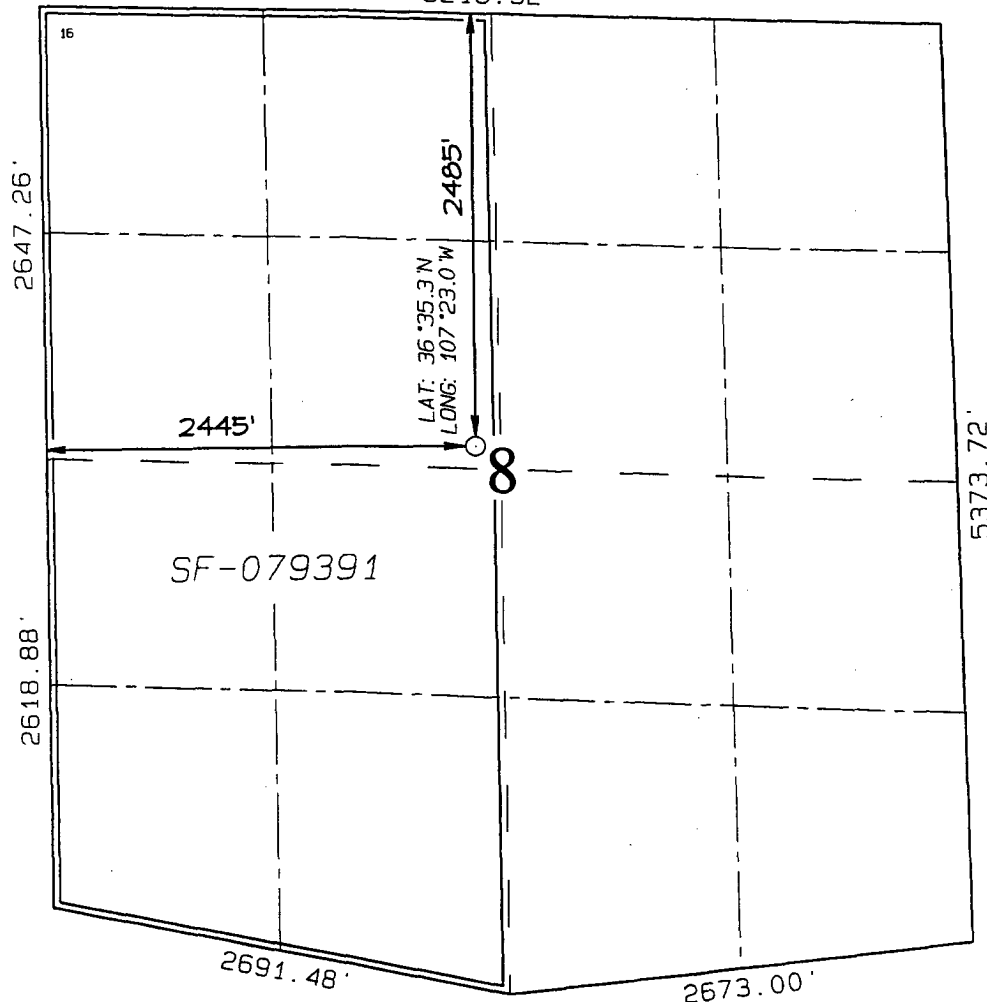
UL or lot no.	Section	Township	Range	Lot Idn	Feet from the	North/South line	Feet from the	East/West line	County
F	8	27N	5W		2485	NORTH	2445	WEST	RIO ARriba

¹¹ Bottom Hole Location If Different From Surface

UL or lot no.	Section	Township	Range	Lot Idn	Feet from the	North/South line	Feet from the	East/West line	County
¹² Dedicated Acres MV-W/320 DK-W/320		¹³ Joint or Infill		¹⁴ Consolidation Code		¹⁵ Order No.			

NO ALLOWABLE WILL BE ASSIGNED TO THIS COMPLETION UNTIL ALL INTERESTS HAVE BEEN CONSOLIDATED
OR A NON-STANDARD UNIT HAS BEEN APPROVED BY THE DIVISION

5215.32'



¹⁷ OPERATOR CERTIFICATION

I hereby certify that the information contained herein is true and complete to the best of my knowledge and belief

Nancy Oltmanns
Signature

Nancy Oltmanns
Printed Name

Senior Staff Specialist
Title

10-30-03
Date

18 SURVEYOR CERTIFICATION

I hereby certify that the well location shown on this plat was plotted from field notes of actual surveys made by me or under my supervision and that the same is true and correct to the best of my belief.

SEPTEMBER 19, 2000
Date of Survey

Signature and Seal of Professional Surveyor

NEALE C. EDWARDS
NEW MEXICO
6857
REGISTERED PROFESSIONAL SURVEYOR

Certificate Number 6857