

**UNITED STATES  
DEPARTMENT OF THE INTERIOR  
BUREAU OF LAND MANAGEMENT**

**RECEIVED**

DEC 01 2008

Sundry Notices and Reports on Wells

Bureau of Land Management  
Farmington Field Office1. Type of Well  
GAS5. Lease Number  
SF-078463-A6. If Indian, All. or  
Tribe Name

7. Unit Agreement Name

2. Name of Operator

**BURLINGTON**

RESOURCES OIL &amp; GAS COMPANY LP

3. Address &amp; Phone No. of Operator

PO Box 4289, Farmington, NM 87499 (505) 326-9700

8. Well Name & Number  
Lea Federal 1E

9. API Well No.

30-045-25980

4. Location of Well, Footage, Sec., T, R, M

Surf: Unit C (NENW), 830' FNL &amp; 1758' FWL, Section 34, T31N, R13W, NMPM

10. Field and Pool

11. Basin Fruitland Coal  
County and State  
San Juan Co, NM**12. CHECK APPROPRIATE BOX TO INDICATE NATURE OF NOTICE, REPORT, OTHER DATA**

## Type of Submission

☒ Notice of Intent☐ Subsequent Report☐ Final Abandonment

## Type of Action

☐ Abandonment☒ Recompletion☐ Plugging☐ Casing Repair☐ Altering Casing☐ Change of Plans☐ New Construction☐ Non-Routine Fracturing☐ Water Shut off☐ Conversion to Injection

Other - \_\_\_\_\_

**13. Describe Proposed or Completed Operations**

Burlington Resources wishes to recomplate this TA'd well to the Basin Fruitland Coal and produce as a standalone Fruitland Coal. Please see the attached procedure, wellbore diagram and FC plat.

RCVD DEC 4 '08

OIL CONS. DIV.

DIST. 3

**14. I hereby certify that the foregoing is true and correct.**Signed Tamra Sessions Title Staff Regulatory Technician Date 12/01/2008

(This space for Federal or State Office use)

APPROVED BY Original Signed: Stephen Mason Title \_\_\_\_\_Date DEC 03 2008

CONDITION OF APPROVAL, if any:

Title 18 U.S.C. Section 1001, makes it a crime for any person knowingly and willfully to make any department or agency of the United States any false, fictitious or fraudulent statements or representations as to any matter within its jurisdiction

NMOCD 12/4

## **Lea Federal #1E**

Unit C, Section 34, Township 31N, Range 13W

API#: 3004525980

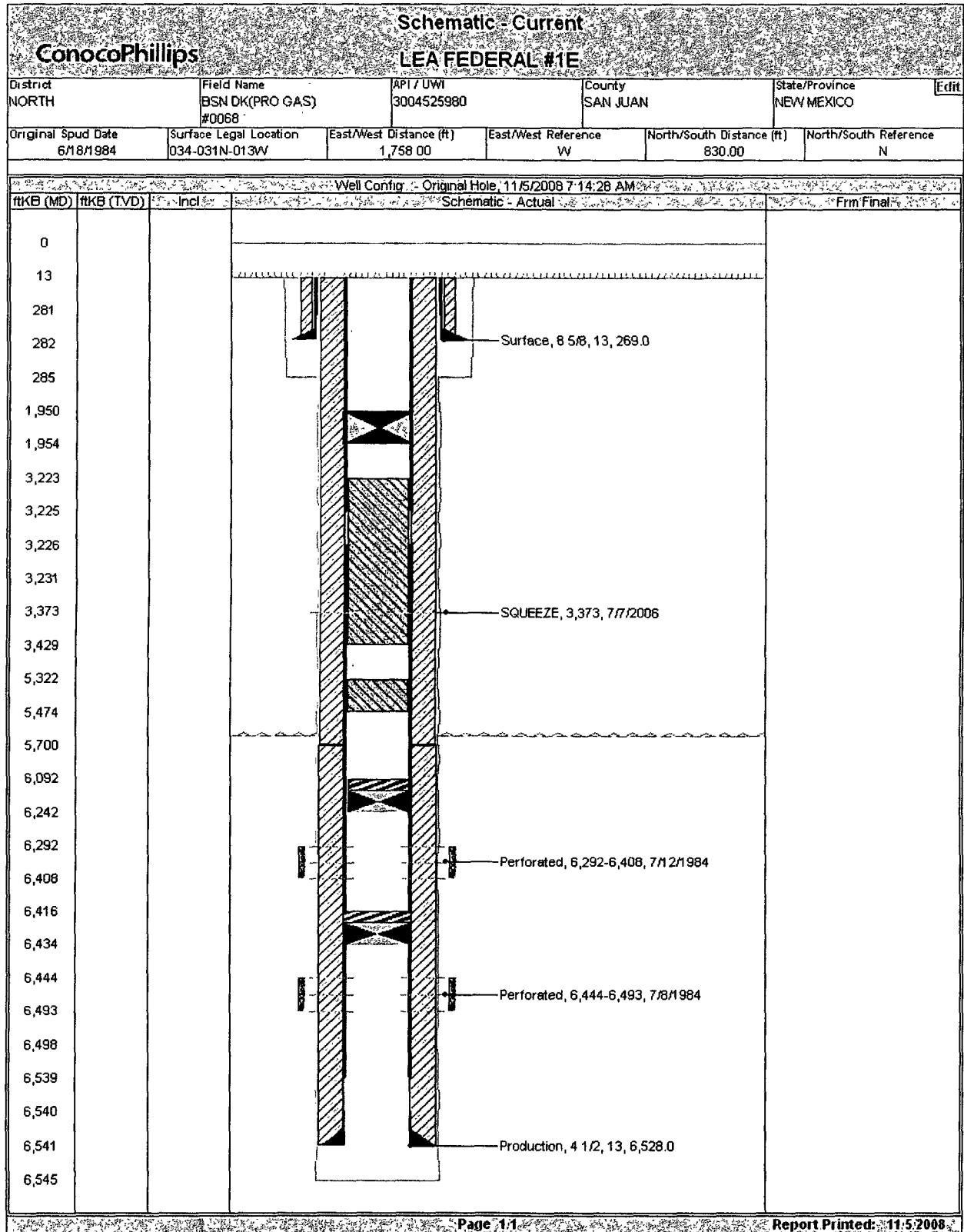
### **Fruitland Coal Recompletion Sundry**

**10/30/2008 (rev. 12/1/08)**

#### **Procedure:**

1. MIRU wireline. Run a GR/CCL/CNL correlation log.
2. RIH and perforate the Fruitland Coal interval.
3. Fracture stimulate the Fruitland Coal with 75Q N2 Foamed 25# linear guar gel.
4. Flow back frac on clean-up to a steel pit.
5. MIRU wireline. RIH and set a composite bridge plug 50ft above top perf. POOH.
6. MIRU completion rig. TIH with a mill and drill out composite plug. Clean out to CIBP @ 1950'.
7. Shut-in the well overnight. MIRU slickline unit to run a dip-in test. RDMO slickline unit.
8. TIH and land production tubing. Flow test entire wellbore.
9. Release service rig and turn over to production.

## Current Wellbore Diagram



District I

1625 N. French Dr., Hobbs, NM 88240  
Phone (505) 393-6161 Fax (505) 393-0720

District II

1301 W. Grand Ave., Artesia, NM 88210  
Phone (505) 748-1283 Fax (505) 748-9720

District III

1000 Rio Brazos Rd., Aztec, NM 87410  
Phone (505) 334-6178 Fax (505) 334-6170

District IV

1220 S. St Francis Dr., Santa Fe, NM 87505  
Phone (505) 476-3470 Fax (505) 476-3462

**State of New Mexico**  
**Energy, Minerals and Natural Resources**

**Oil Conservation Division**  
**1220 S. St Francis Dr.**  
**Santa Fe, NM 87505**

Form C-102  
Permit 84666

**WELL LOCATION AND ACREAGE DEDICATION PLAT**

1 API Number <b>30-045-25980</b>	2 Pool Code 71629	3 Pool Name BASIN FRUITLAND COAL (GAS)
4. Property Code 7253	5. Property Name LEA FEDERAL	6. Well No. 001E
7. OGRID No. 14538	8 Operator Name BURLINGTON RESOURCES OIL & GAS COMPANY LP	9 Elevation 5618

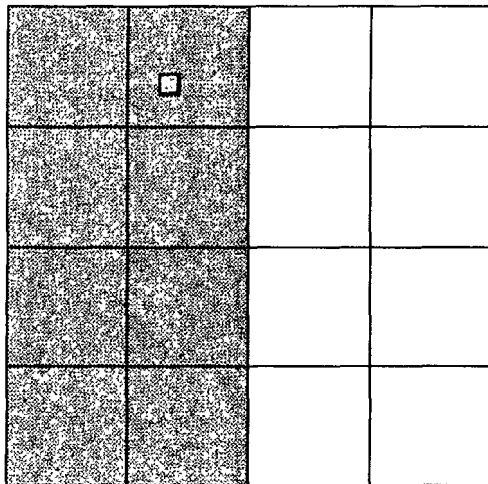
**10. Surface Location**

UL - Lot C	Section 34	Township 31N	Range 13W	Lot Idn	Feet From 830	N/S Line N	Feet From 1758	E/W Line W	County SAN JUAN
---------------	---------------	-----------------	--------------	---------	------------------	---------------	-------------------	---------------	--------------------

**11. Bottom Hole Location If Different From Surface**

UL - Lot	Section	Township	Range	Lot Idn	Feet From	N/S Line	Feet From	E/W Line	County
12 Dedicated Acres 320.00	13. Joint or Infill	14 Consolidation Code	15. Order No.						

**NO ALLOWABLE WILL BE ASSIGNED TO THIS COMPLETION UNTIL ALL INTERESTS HAVE BEEN CONSOLIDATED OR A NON-STANDARD UNIT HAS BEEN APPROVED BY THE DIVISION**

**OPERATOR CERTIFICATION**

*I hereby certify that the information contained herein is true and complete to the best of my knowledge and belief, and that this organization either owns a working interest or unleased mineral interest in the land including the proposed bottom hole location(s) or has a right to drill this well at this location pursuant to a contract with an owner of such a mineral or working interest, or to a voluntary pooling agreement or a compulsory pooling order heretofore entered by the division.*

E-Signed By: *Tamara Lesinski*  
Title: **Staff Regulatory Technician**  
Date: **11/5/2008**

**SURVEYOR CERTIFICATION**

*I hereby certify that the well location shown on this plat was plotted from field notes of actual surveys made by me or under my supervision, and that the same is true and correct to the best of my belief.*

Surveyed By: Michael Daly  
Date of Survey: 10/10/1983  
Certificate Number: 5992