

UNITED STATES  
DEPARTMENT OF THE INTERIOR  
BUREAU OF LAND MANAGEMENT

RECEIVED

APPLICATION FOR PERMIT TO DRILL, DEEPEN, OR PLUG BACK

1a. Type of Work DRILL	5. Lease Number NMSFO78604 Unit Reporting Number 070 Farmington, NM
1b. Type of Well GAS	6. If Indian, All. or Tribe
2. Operator <b>BURLINGTON RESOURCES</b> Oil & Gas Company	7. Unit Agreement Name
3. Address & Phone No. of Operator PO Box 4289, Farmington, NM 87499 (505) 326-9700	8. Farm or Lease Name Scott Com
4. Location of Well 695' FNL, 1570' FEL Latitude 36° 56, Longitude 107° 52.1	9. Well Number 103
	10. Field, Pool, Wildcat Basin Fruitland Coal
	11. Sec, Twn, Rge, Mer. (NMPM) Sec. 3, T-31-N, R-10-W AP# 30-045- 31582
14. Distance in Miles from Nearest Town 2 miles from Cedar Hill	12. County San Juan
	13. State NM
15. Distance from Proposed Location to Nearest Property or Lease Line 695'	
16. Acres in Lease	17. Acres Assigned to Well 299.50 N2
18. Distance from Proposed Location to Nearest Well, Drig, Compl, or Applied for on this Lease 250'	
19. Proposed Depth 2803'	20. Rotary or Cable Tools Rotary
21. Elevations (DF, FT, GR, Etc.) 5946' GR	22. Approx. Date Work will Start
23. Proposed Casing and Cementing Program See Operations Plan attached	
24. Authorized by: <u>[Signature]</u> Regulatory/Compliance Supervisor	Date <u>3-24-03</u>

PERMIT NO.

APPROVAL DATE

APPROVED BY David J. Markiewicz

TITLE

DATE NOV 13 2003

Archaeological Report to be submitted TR 1882 received 4-7-00  
Threatened and Endangered Species Report to be submitted 6-26-00

NOTE: This format is issued in lieu of U.S. BLM Form 3160-3

Title 18 U.S.C. Section 1001, makes it a crime for any person knowingly and willfully to make to any department or agency of the United States any false, fictitious or fraudulent statements or presentations as to any matter within its jurisdiction.

This action is subject to technical and procedural review pursuant to 43 CFR 3165.3 and appeal pursuant to 43 CFR 3165.4

DRILLING OPERATIONS AUTHORIZED ARE SUBJECT TO COMPLIANCE WITH ATTACHED "GENERAL REQUIREMENTS".

NMOCD

District I  
PO Box 1980, Hobbs, NM 88241-1980

State of New Mexico  
Energy, Minerals & Natural Resources Department

Form C-102  
Revised February 21, 1994

District II  
PO Drawer DD, Artesia, NM 88211-0719

OIL CONSERVATION DIVISION  
PO Box 2088  
Santa Fe, NM 87504-2088

Submit to Appropriate District Office  
State Lease - 4 Copies  
Fee Lease - 3 Copies

District III  
1000 Rio Brazos Rd., Aztec, NM 87410

District IV  
PO Box 2088, Santa Fe, NM 87504-2088

☐ AMENDED REPORT

WELL LOCATION AND ACREAGE DEDICATION PLAT

*API Number 30-045- 3/582		*Pool Code 71629	*Pool Name Basin Fruitland Coal
*Property Code 7495	*Property Name SCOTT COM		*Well Number 103
*OGRID No. 14538	*Operator Name BURLINGTON RESOURCES OIL & GAS COMPANY		*Elevation 5946'

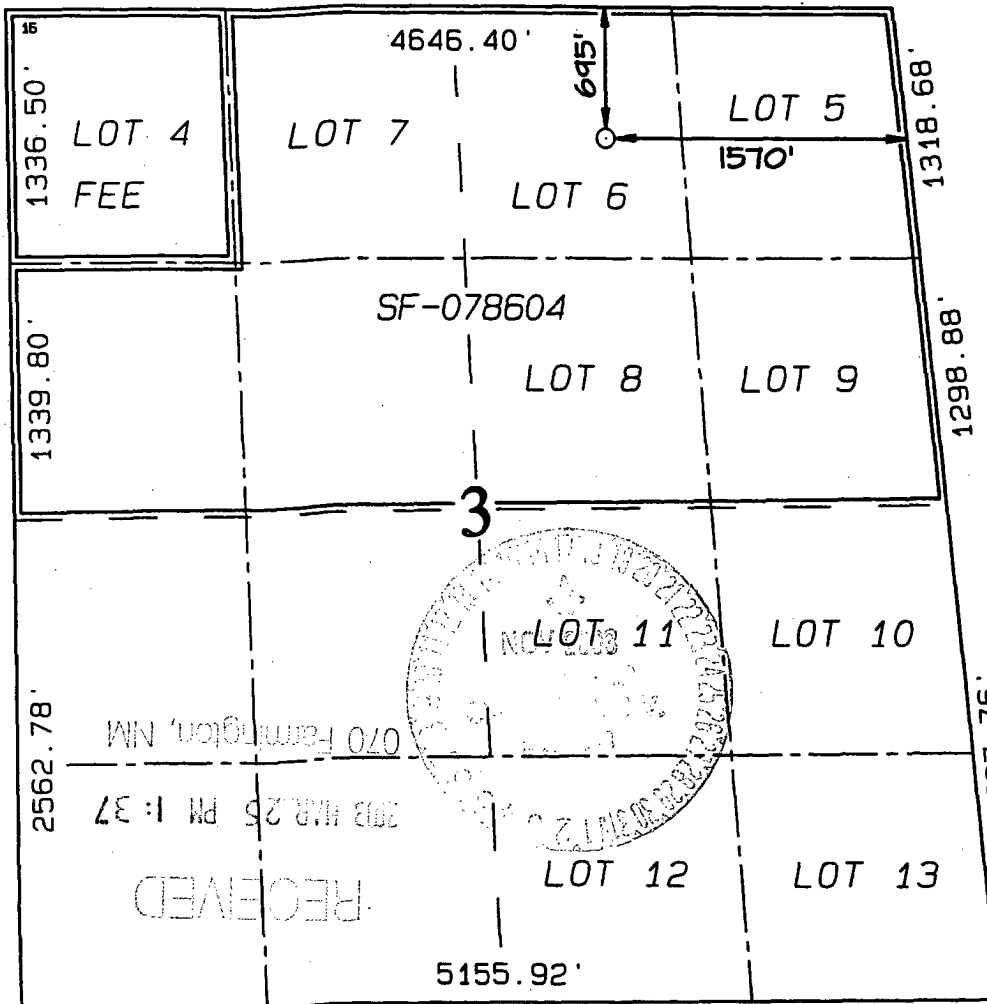
<sup>10</sup> Surface Location

UL or lot no.	Section	Township	Range	Lot Idn	Feet from the	North/South line	Feet from the	East/West line	County
B	3	31N	10W		695	NORTH	1570	EAST	SAN JUAN

<sup>11</sup> Bottom Hole Location If Different From Surface

UL or lot no.	Section	Township	Range	Lot Idn	Feet from the	North/South line	Feet from the	East/West line	County
<sup>12</sup> Dedicated Acres N/299.50		<sup>13</sup> Joint or Infill		<sup>14</sup> Consolidation Code		<sup>15</sup> Order No.			

NO ALLOWABLE WILL BE ASSIGNED TO THIS COMPLETION UNTIL ALL INTERESTS HAVE BEEN CONSOLIDATED OR A NON-STANDARD UNIT HAS BEEN APPROVED BY THE DIVISION



<sup>17</sup> OPERATOR CERTIFICATION

I hereby certify that the information contained herein is true and complete to the best of my knowledge and belief.

*Peggy Cole*  
Signature  
Peggy Cole  
Printed Name  
Regulatory Administrator  
Title  
3-13-03

Date

<sup>18</sup> SURVEYOR CERTIFICATION

I hereby certify that the well location shown on this plat was plotted from field notes of actual surveys made by me or under my supervision and that the same is true and correct to the best of my belief.

FEBRUARY 1, 2000

Date of Survey

Signature and Seal  
*NEALEC. EDWARDS*  
NEALEC. EDWARDS  
NEW MEXICO  
6857  
Professional Surveyor  
Certificate Number 6857

### OPERATIONS PLAN

**Well Name:** Scott Com #103  
**Location:** 695' FNL, 1570' FEL Section 3, T-31-N, R-10-W  
Latitude 36° 56.0, Longitude 107° 52.1  
San Juan County, NM  
**Formation:** Basin Fruitland Coal  
**Elevation:** 5946' GL

Formation:	Top	Bottom	Contents
Surface	San Jose	1281'	
Ojo Alamo	1281'	1306'	aquifer
Kirtland	1306'	2337'	
Fruitland	2337'	2753'	gas
Fruitland Coal	2753'	2758'	gas
Pictured Cliffs	2758'	2803'	gas
Total Depth	2803'		

**Logging Program:** Platform express TD-surface.  
**Mud log:** 2 man unit from Kirtland to TD  
**Coring Program:** none

**Mud Program:**

Interval	Type	Weight	Vis.	Fluid Loss
0- 120'	Spud	8.4-9.0	40-50	no control
120-2803'	Non-dispersed	8.4-9.5	30-60	no control

**Casing Program (as listed, the equivalent, or better):**

Hole Size	Depth Interval	Csg. Size	Wt.	Grade
8 3/4"	0' - 120'	7"	20.0#	J-55
6 1/4"	0' - 2803'	4 1/2"	10.5#	J-55

**Tubing Program:**

0' - 2803'	2 3/8"	4.7#	J-55
------------	--------	------	------

**Float Equipment:** 7" surface casing - saw tooth guide shoe. Centralizers will be run in accordance with Onshore Order #2.

4 1/2" production casing - guide shoe and self-fill float collar. Standard centralizers run every other joint above shoe. Two turbolizing type centralizers - one below and one into the base of the Ojo Alamo @ 1306'. Standard centralizers thereafter every fourth joint up to the base of the surface pipe.

**Wellhead Equipment:** 7" x 4 1/2" x 2 3/8" x 11" 2000 psi screw on independent wellhead.

**Cementing:**

7" surface casing - cement with 38 sx Class "B" Type III cement with 0.25 pps Celloflake and 3% calcium chloride (54 cu.ft. of slurry, 200% excess to circulate to surface). WOC 24 hours for pre-set holes or 8 hours for conventionally set holes before pressure testing or drilling out from under surface casing. Test casing to 600 psi for 30 minutes.

4 1/2" production casing - Lead w/144 sx Premium Lite cement w/3% calcium chloride, 1/4 pps Cello-flake, 5 pps LCM-1, 0.4% FL-52, and 0.4% SMS. Tail w/90 sx Type III cement w/1% calcium chloride, 1/4 pps Cello-flake, and 0.2% FL-52 (431 cu.ft. of slurry, 50% excess to circulate to surface.) If cement is not circulated to surface, a temperature survey or CBL will be run during drilling or completion operations to determine TOC.

4-1/2" production casing alternative two stage - Stage collar @ 2237'. First stage: cement with 63 sxs Type III cmt w/1% calcium chloride, 0.25 pps flocele, 0.2% fluid loss. Second stage: 162 sxs Premium Lite cmt w/3% calcium chloride, 0.25 pps Flocele, 5 pps LCM-1, 0.4% fluid loss, 0.4% SMS (431 cu.ft. of slurry, 50% excess to circulate to surface).

Note: If open hole logs are run, cement volumes will be based on 25% excess over caliper volumes.

**BOP and tests:**

Surface to TD - 11" 2000 psi (minimum double gate BOP stack (Reference Figure #1). Prior to drilling out surface casing, test rams to 600 psi/30 min.

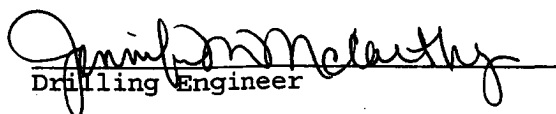
Completion - 7 1/16" 2000 psi (minimum) double gate BOP stack (Reference Figure #2). Prior to completion operations, test rams and casing to 2000 psi/15 min.

From surface to TD - choke manifold (Reference Figure #3).

Pipe rams will be actuated at least once each day and blind rams actuated once each trip to test proper functioning. An upper kelly cock valve with handle and drill string safety valves to fit each drill string will be maintained and available on the rig floor.

**Additional information:**

- \* The Fruitland Coal formation will be completed and commingled.
- \* Anticipated pore pressure for the Fruitland is 500 psi.
- \* This gas is dedicated.
- \* The north half of Section 3 is dedicated to the Fruitland Coal.

  
Drilling Engineer

3/17/03  
Date