

UNITED STATES
DEPARTMENT OF THE INTERIOR
BUREAU OF LAND MANAGEMENT

SUNDRY NOTICES AND REPORTS ON WELLS
*Do not use this form for proposals to drill or to re-enter an
Abandoned well. Use Form 3160-3 (APD) for such proposals.*

RECEIVED

DEC 18 2008

FORM APPROVED
OMB No. 1004-0135
Expires July 31, 2010

5. Lease Serial No

NM-010989

6. If Indian, Allottee or tribe Name

7. If Unit or CA/Agreement, Name and/or No.

SUBMIT IN TRIPLICATE - Other instructions on reverse side

1. Type of Well

☐ Oil Well ☒ Gas Well ☐ Other

8. Well Name and No.

Fields LS # 9

2. Name of Operator

BP America Production Company Attn: Kristen Holder

9. API Well No.

30-045-21176

3a. Address

P.O. Box 3092 Houston, TX 77253

3b. Phone No. (include area code)

281-504-0921

10. Field and Pool, or Exploratory Area

Pictured Cliffs

4. Location of Well (Footage, Sec., T., R., M., or Survey Description)

1810' FNL 1540 FEL Sec 34 T32N & R 11W

11. County or Parish, State

San Juan, New Mexico

12. CHECK APPROPRIATE BOX(ES) TO INDICATE NATURE OR NOTICE, REPORT, OR OTHER DATA

TYPE OF SUBMISSION

- ☒ Notice of Intent
☐ Subsequent Report
☐ Final Abandonment Notice

TYPE OF ACTION

- ☐ Acidize ☐ Deepen ☐ Production (Start/Resume) ☐ Water shut-Off
☐ Alter Casing ☐ Fracture Treat ☐ Reclamation ☐ Well Integrity
☐ Casing Repair ☐ New Construction ☐ Recomplete ☐ Other
☐ Change Plans ☒ Plug and Abandon ☐ Water Disposal
☐ Convert to Injection ☐ Plug Back

13. Describe Proposed or Completed Operation (clearly state all pertinent details, including estimated starting date of any proposed work and approximate duration thereof. If the proposal is to deepen directionally or recomplete horizontally, give subsurface locations and measured and true vertical depths of all pertinent markers and zones. Attach the Bond under which the work will be performed or provide the Bond No. on file with BLM/BIA. Required subsequent reports shall be filed within 30 days following completion of the involved operations. If the operation results in a multiple completion or recompletion in a new interval, a Form 3160-4 shall be filed once testing has been completed. Final Abandonment Notices shall be filed only after all requirements, including reclamation, have been completed, and the operator has determined that the site is ready for final inspection.

After Evaluation of the above mentioned well BP America respectfully request to P&A the entire well. Please see the attached procedure.

RCVD JAN 7 '09
OIL CONS. DIV.
DIST. 3

14. I hereby certify that the foregoing is true and correct
Name (Printed/typed)

Kristen Holder

Title Regulatory Analyst

Signature

Kristen Holder

Date 12/16/08

THIS SPACE FOR FEDERAL OR STATE OFFICE USE

Approved by

Suph M mm

Title

PE

Date

JAN 05 2009

Conditions of approval, if any, are attached. Approval of this notice does not warrant or Certify that the applicant holds legal or equitable title to those rights in the subject lease which would entitle the applicant to conduct operations thereon.

Office

1-06

Title 18 U.S.C. Section 1001 and Title 43 U.S.C. Section 1212, make it a crime for any person knowingly and willfully to make to any department or agency of the United States any false, fictitious or fraudulent statements or representations as to any matter within its jurisdiction

NMOCD

48

SJ Basin Well Work Procedure

API #: 30-045-21176

Well Name: Fields LS 009 -PC
Repair Type: P&A
Location: T32N-R11W-Sec34
County: San Juan **FlacWell:** 979221
State: New Mexico **Meter #:** 87725
Horizon: Pictured Cliffs **Engr:** Anne Hansford
 Office 281-366-8619

Objective: P&A entire wellbore.

1. Pump lower cement plug to TOC.
2. Perforate casing 100' above CBL documented TOC
3. Set cement retainer and squeeze cement behind 2-7/8" casing to surface
4. Fill tubular space with cement above retainer to surface
5. Cut off wellhead and install dry hole marker.

Pertinent Information: Gas BTU content for this well is 1145; Sp gr. is 0.6559; CO₂ = 0.879. All tested 9-4-08. Venting and Flaring document needs to be followed if BTU content is above 950.

Procedure: Notify BLM and NMOCD 24 hours prior to beginning P&A operations.

1. Perform pre-rig site inspection. Check for: size of location, Gas Taps, other wells, other operators, running equipment, wetlands, wash (dikes req.), H₂S, barriers needed for equipment, Landowner issues, location of pits (buried lines in pits), Raptor nesting, critical location, check anchors. Check ID wellhead; if earth pit is required have One Call made 48 hours prior to digging.
2. Perform second site visit after lines are marked to ensure all lines clear marked pit locations. Planning and scheduling to ready location for rig.
3. Prior to rig up a full history should be obtained for the coil tubing unit. This should include the remaining coil tubing fatigue life, the position of all welds, and the fluid exposure history, all items should be documented for the reel.
4. Hold pre-job safety meeting and discuss all JSA's with all BP and third party personnel. The Pre-job safety meeting should cover: heavy lifts, pinch points, location hazards, pressure hazards, and proper PPE.
5. Check and record casing and bradenhead pressures (Tubingless completion). Ensure production casing has double casing valves installed. Double valve all casing strings.
6. LOTO all necessary equipment including but not limited to: meter run, automation, separator, cathodic protections, and water lines.
7. RU slickline unit prior to moving coil rig on location. Pressure test slickline lubricator and BOP's to 500psig. Tag PBTD for future reference.

8. Set CIBP @ 2824' with WL. Roll hole with fluid and pressure test casing. If no fluid or pressure loss is apparent run CBL from 2824' to surface. Expect top of cement @ 1990' behind 2-7/8" casing. RD WL.
9. Move in and RU. Pressure test BOP's.
10. RIH with 1-1/4" 2824' and mix correct batch of G-Class cement using the CBL report results and the volume gradients in next STEP (11) to spot plugs inside 2-7/8" casing.
11. The CBL report will tell where we need to perforate and squeeze cement behind 2-7/8" casing – expect TOC @ 1990'. We will spot cement plug from 2824' (top of CIBP) to 100' below TOC documented in CBL report. Calculate cement volume to mix and pump using the following unit gradients – 0.0325cu. ft./ ft or 0.00579bbl/ft. Example: TOC @ 1990' pump cement volume to fill 934' (430.355 cu. ft) (2824' CIBP - 19900' TOC- 100' depth control safety factor). Do not over mix or pump cement batch above required volumetric amount.
12. Circulate water thru before POOH.
13. POOH.
14. RU WL and tag TOC inside 2-7/8" – document in DIMS report. RIH with perforating gun and shot holes ~~50' above document TOC from CBL report.~~ RD WL.
@ 1150'
15. RIH with 1-1/4" with a 2-7/8" cement retainer and set retainer 50' above perforated interval. Establish water circulation with surface, if possible, and circulate cement to surface. If circulation not possible squeeze interval with 69.02 cu. ft. to fill 200' of annular space behind 2-7/8" casing + 100' of tubular space below the retainer.
16. If cement circulation to surface behind 2-7/8" casing was completed in previous step spot G-Class cement on top of retainer to surface and skip next step (17).
17. If cement circulation to surface was not possible in step (15) complete squeeze then sting out of cement retainer spot cement on top of retainer to 230' – mix cement using tubular volume gradient of 0.0325cu ft/ ft. Repeat steps 12, 13, 14 (perforate @ 200'), and step 15 except RIH w/ packer to 150' and cover the 8-5/8" casing shoe to surface behind 2-7/8" casing. Then spot cement to surface inside 2-7/8" casing above perforations. POOH.
18. Perform underground disturbance and hot work permits. Cut off tree. **If cement cannot be seen on all annulus and casing strings remedial cementing will be required from surface.**
19. Install well marker and identification plate per NMOCD requirements.
20. RD and release all equipment. Remove all LOTO equipment.
21. Ensure all reports are loaded into DIMS. Print out summary of work and place in Well file. Notify Sherri Bradshaw (326-9260) of completed P&A and Cherry Hlava.

Fields LS 009 - PC

Sec 34, T32N, R11W

API # 30-045-21176

GL: 6139'

History:

Completed 5-25-73

8-5/8", 24# KS @ 127'

107 sxs cmt

circulated cement to surface

TOC @ 1990'

PC Perforations

2874-2894 20 shots/zone

2904-2918 32k#

2938-2950

2-7/8", 6.5# JS @ 3010'

340 sxs cmt

PBTD: 3001'

TD: 3010'

Formation tops:

PC 2872'

Ojo Alamo 1700'

updated: 11/5/08 AH

Proposed P&A diagram:

Fields LS 009 - PC

Sec 34, T32N, R11W

API # 30-045-21176

GL: 6139'

History:

Completed 5-25-73

PC Perforations

2874-2894 20 shots/zone

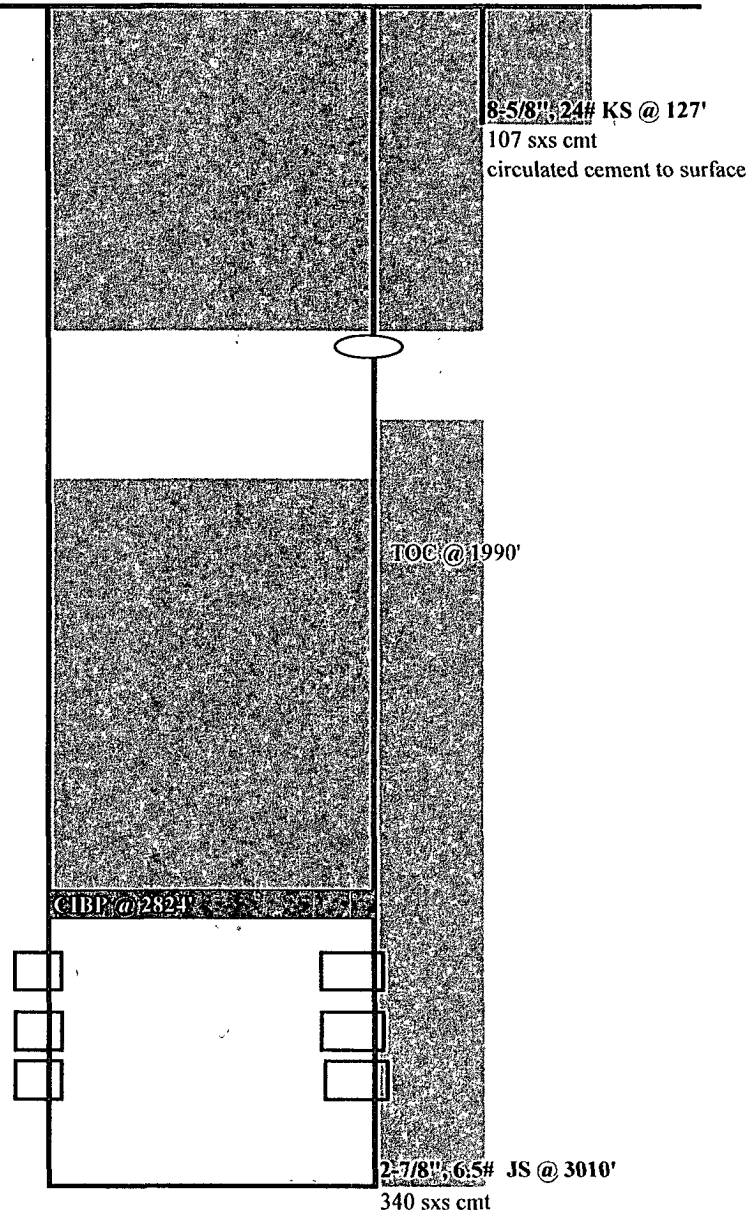
2904-2918 32k#

2938-2950

Formation tops:

PC 2872'

Ojo Alamo 1700'



updated: 11/5/08 AH

**UNITED STATES DEPARTMENT OF THE INTERIOR
BUREAU OF LAND MANAGEMENT
FARMINGTON DISTRICT OFFICE
1235 LA PLATA HIGHWAY
FARMINGTON, NEW MEXICO 87401**

Attachment to notice of
Intention to Abandon:

Re: Permanent Abandonment
Well: 9 Fields LS

CONDITIONS OF APPROVAL

1. Plugging operations authorized are subject to the attached "General Requirements for Permanent Abandonment of Wells on Federal and Indian Lease."
2. Farmington Office is to be notified at least 24 hours before the plugging operations commence (505) 599-8907.
3. The following modifications to your plugging program are to be made:
 - a) Perforate for the second plug @ 1150' to cover the Kirtland Top @ 1100'.

You are also required to place cement excesses per 4.2 and 4.4 of the attached General Requirements.

Office Hours: 7:45 a.m. to 4:30 p.m.