

District I  
1625 N French Dr, Hobbs, NM 88240

District II  
1301 W. Grand Ave., Artesia, NM 88210

District III  
1000 Rio Brazos Rd, Aztec, NM 87410

District IV  
1220 S. St. Francis Dr, Santa Fe, NM 87505

State of New Mexico  
Energy Minerals and Natural Resources

Department  
Oil Conservation Division  
1220 South St. Francis Dr.  
Santa Fe, NM 87505

Form C-144  
July 21, 2008

For temporary pits, closed-loop systems, and below-grade tanks, submit to the appropriate NMOCD District Office

For permanent pits and exceptions submit to the Santa Fe Environmental Bureau office and provide a copy to the appropriate NMOCD District Office

2900

Pit, Closed-Loop System, Below-Grade Tank, or  
Proposed Alternative Method Permit or Closure Plan Application

- Type of action:
- ☐ Permit of a pit, closed-loop system, below-grade tank, or proposed alternative method
  - ☐ Closure of a pit, closed-loop system, below-grade tank, or proposed alternative method
  - ☐ Modification to an existing permit
  - ☒ Closure plan only submitted for an existing permitted or non-permitted pit, closed-loop system, below-grade tank, or proposed alternative method

**Instructions: Please submit one application (Form C-144) per individual pit, closed-loop system, below-grade tank or alternative request**

Please be advised that approval of this request does not relieve the operator of liability should operations result in pollution of surface water, ground water or the environment. Nor does approval relieve the operator of its responsibility to comply with any other applicable governmental authority's rules, regulations or ordinances.

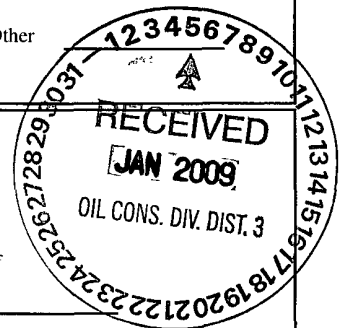
1	
Operator: <b>Burlington Resources Oil &amp; Gas Company, LP</b>	OGRID#: <b>14538</b>
Address: <b>PO Box 4289, Farmington, NM 87499</b>	
Facility or well name: <b>Valdez 7N</b>	
API Number: <b>30-039-30491</b>	OCD Permit Number: _____
U/L or Qtr/Qtr: <b>F(SENW)</b>	Section: <b>28</b> Township: <b>28N</b> Range: <b>4W</b> County: <b>Rio Arriba</b>
Center of Proposed Design: Latitude: <b>36.633694' N</b>	Longitude: <b>107.260166' W</b> NAD: <input type="checkbox"/> 1927 <input checked="" type="checkbox"/> 1983
Surface Owner: <input checked="" type="checkbox"/> Federal <input type="checkbox"/> State <input type="checkbox"/> Private <input type="checkbox"/> Tribal Trust or Indian Allotment	

2	
<input checked="" type="checkbox"/> <b>Pit:</b> Subsection F or G of 19.15.17.11 NMAC	
Temporary: <input checked="" type="checkbox"/> Drilling <input type="checkbox"/> Workover	
<input type="checkbox"/> Permanent <input type="checkbox"/> Emergency <input type="checkbox"/> Cavitation <input type="checkbox"/> P&A	
<input checked="" type="checkbox"/> Lined <input type="checkbox"/> Unlined Liner type: Thickness <b>12</b> mil <input checked="" type="checkbox"/> LLDPE <input type="checkbox"/> HDPE <input type="checkbox"/> PVC <input type="checkbox"/> Other _____	
<input checked="" type="checkbox"/> String-Reinforced	
Liner Seams: <input checked="" type="checkbox"/> Welded <input checked="" type="checkbox"/> Factory <input type="checkbox"/> Other _____ Volume: <b>4400</b> bbl Dimensions L <b>65'</b> x W <b>45'</b> x D <b>10'</b>	

3	
<input type="checkbox"/> <b>Closed-loop System:</b> Subsection H of 19.15.17.11 NMAC	
Type of Operation: <input type="checkbox"/> P&A <input type="checkbox"/> Drilling a new well <input type="checkbox"/> Workover or Drilling (Applies to activities which require prior approval of a permit or notice of intent)	
<input type="checkbox"/> Drying Pad <input type="checkbox"/> Above Ground Steel Tanks <input type="checkbox"/> Haul-off Bins <input type="checkbox"/> Other _____	
<input type="checkbox"/> Lined <input type="checkbox"/> Unlined Liner type: Thickness _____ mil <input type="checkbox"/> LLDPE <input type="checkbox"/> HDPE <input type="checkbox"/> PVD <input type="checkbox"/> Other _____	
Liner Seams: <input type="checkbox"/> Welded <input type="checkbox"/> Factory <input type="checkbox"/> Other _____	

4	
<input type="checkbox"/> <b>Below-grade tank:</b> Subsection I of 19.15.17.11 NMAC	
Volume: _____ bbl	Type of fluid: _____
Tank Construction material: _____	
<input type="checkbox"/> Secondary containment with leak detection <input type="checkbox"/> Visible sidewalls, liner, 6-inch lift and automatic overflow shut-off	
<input type="checkbox"/> Visible sidewalls and liner <input type="checkbox"/> Visible sidewalls only <input type="checkbox"/> Other _____	
Liner Type: _____	Thickness _____ mil <input type="checkbox"/> HDPE <input type="checkbox"/> PVC <input type="checkbox"/> Other _____

5	
<input type="checkbox"/> <b>Alternative Method:</b>	
Submittal of an exception request is required. Exceptions must be submitted to the Santa Fe Environmental Bureau office for consideration of approval.	



6

**Fencing:** Subsection D of 19.15.17.11 NMAC (*Applies to permanent pit, temporary pits, and below-grade tanks*)

☐

Chain link, six feet in height, two strands of barbed wire at top (*Required if located within 1000 feet of a permanent residence, school, hospital, institution or church*)

☐

Four foot height, four strands of barbed wire evenly spaced between one and four feet

☐

Alternate. Please specify \_\_\_\_\_

7

**Netting:** Subsection E of 19.15.17.11 NMAC (*Applies to permanent pits and permanent open top tanks*)

☐

Screen

☐

Netting

☐

Other

\_\_\_\_\_

☐

Monthly inspections (*If netting or screening is not physically feasible*)

8

**Signs:** Subsection C of 19.15.17.11 NMAC

☐

12" X 24", 2" lettering, providing Operator's name, site location, and emergency telephone numbers

☒

Signed in compliance with 19.15.3.103 NMAC

9

**Administrative Approvals and Exceptions:**

Justifications and/or demonstrations of equivalency are required. Please refer to 19.15.17 NMAC for guidance.

*Please check a box if one or more of the following is requested, if not leave blank:*

☐

Administrative approval(s): Requests must be submitted to the appropriate division district of the Santa Fe Environmental Bureau office for consideration of approval

☐

Exception(s): Requests must be submitted to the Santa Fe Environmental Bureau office for consideration of approval.

10

**Siting Criteria (regarding permitting):** 19.15.17.10 NMAC

*Instructions: The applicant must demonstrate compliance for each siting criteria below in the application. Recommendations of acceptable source material are provided below. Requests regarding changes to certain siting criteria may require administrative approval from the appropriate district office or may be considered an exception which must be submitted to the Santa Fe Environmental Bureau Office for consideration of approval. Applicant must attach justification for request. Please refer to 19.15.17.10 NMAC for guidance. Siting criteria does not apply to drying pads or above grade-tanks associated with a closed-loop system.*

**Ground water is less than 50 feet below the bottom of the temporary pit, permanent pit, or below-grade tank.**

- NM Office of the State Engineer - iWATERS database search, USGS; Data obtained from nearby wells

☐

Yes

☐

No

**Within 300 feet of a continuously flowing watercourse, or 200 feet of any other watercourse, lakebed, sinkhole, or playa lake (measured from the ordinary high-water mark).**

- Topographic map; Visual inspection (certification) of the proposed site

☐

Yes

☐

No

**Within 300 feet from a permanent residence, school, hospital, institution, or church in existence at the time of initial application.**

*(Applies to temporary, emergency, or cavitation pits and below-grade tanks)*

- Visual inspection (certification) of the proposed site; Aerial photo; Satellite image

☐

Yes

☐

No

☐

NA

**Within 1000 feet from a permanent residence, school, hospital, institution, or church in existence at the time of initial application.**

*(Applied to permanent pits)*

- Visual inspection (certification) of the proposed site; Aerial photo; Satellite image

☐

Yes

☐

No

☐

NA

**Within 500 horizontal feet of a private, domestic fresh water well or spring that less than five households use for domestic or stock watering purposes, or within 1000 horizontal feet of any other fresh water well or spring, in existence at the time of initial application.**

- NM Office of the State Engineer - iWATERS database search; Visual inspection (certification) of the proposed site.

☐

Yes

☐

No

**Within incorporated municipal boundaries or within a defined municipal fresh water well field covered under a municipal ordinance adopted pursuant to NMSA 1978, Section 3-27-3, as amended**

- Written confirmation or verification from the municipality; Written approval obtained from the municipality

☐

Yes

☐

No

**Within 500 feet of a wetland.**

- US Fish and Wildlife Wetland Identification map; Topographic map; Visual inspection (certification) of the proposed site

☐

Yes

☐

No

**Within the area overlying a subsurface mine.**

- Written confirmation or verification or map from the NM EMNRD - Mining and Mineral Division

☐

Yes

☐

No

**Within an unstable area.**

- Engineering measures incorporated into the design; NM Bureau of Geology & Mineral Resources; USGS; NM Geological Society; Topographic map

☐

Yes

☐

No

**Within a 100-year floodplain**

- FEMA map

☐

Yes

☐

No

11

**Temporary Pits, Emergency Pits and Below-grade Tanks Permit Application Attachment Checklist:** Subsection B of 19.15.17.9 NMAC  
*Instructions: Each of the following items must be attached to the application. Please indicate, by a check mark in the box, that the documents are attached.*

- ☐ Hydrogeologic Report (Below-grade Tanks) - based upon the requirements of Paragraph (4) of Subsection B of 19.15.17.9 NMAC
- ☐ Hydrogeologic Data (Temporary and Emergency Pits) - based upon the requirements of Paragraph (2) of Subsection B of 19.15.17.9 NMAC
- ☐ Siting Criteria Compliance Demonstrations - based upon the appropriate requirements of 19.15.17.10 NMAC
- ☐ Design Plan - based upon the appropriate requirements of 19.15.17.11 NMAC
- ☐ Operating and Maintenance Plan - based upon the appropriate requirements of 19.15.17.12 NMAC
- ☐ Closure Plan (Please complete Boxes 14 through 18, if applicable) - based upon the appropriate requirements of Subsection C of 19.15.17.9 NMAC and 19.15.17.13 NMAC

☐ Previously Approved Design (attach copy of design) API \_\_\_\_\_ or Permit \_\_\_\_\_

12

**Closed-loop Systems Permit Application Attachment Checklist:** Subsection B of 19.15.17.9 NMAC

*Instructions: Each of the following items must be attached to the application. Please indicate, by a check mark in the box, that the documents are attached.*

- ☐ Geologic and Hydrogeologic Data (only for on-site closure) - based upon the requirements of Paragraph (3) of Subsection B of 19.15.17.9 NMAC
- ☐ Siting Criteria Compliance Demonstrations (only for on-site closure) - based upon the appropriate requirements of 19.15.17.10 NMAC
- ☐ Design Plan - based upon the appropriate requirements of 19.15.17.11 NMAC
- ☐ Operating and Maintenance Plan - based upon the appropriate requirements of 19.15.17.12 NMAC
- ☐ Closure Plan (Please complete Boxes 14 through 18, if applicable) - based upon the appropriate requirements of Subsection C of 19.15.17.9 NMAC and 19.15.17.13 NMAC

☐ Previously Approved Design (attach copy of design) API \_\_\_\_\_

☐ Previously Approved Operating and Maintenance Plan API \_\_\_\_\_

13

**Permanent Pits Permit Application Checklist:** Subsection B of 19.15.17.9 NMAC

*Instructions: Each of the following items must be attached to the application. Please indicate, by a check mark in the box, that the documents are attached.*

- ☐ Hydrogeologic Report - based upon the requirements of Paragraph (I) of Subsection B of 19.15.17.9 NMAC
- ☐ Siting Criteria Compliance Demonstrations - based upon the appropriate requirements of 19.15.17.10 NMAC
- ☐ Climatological Factors Assessment
- ☐ Certified Engineering Design Plans - based upon the appropriate requirements of 19.15.17.11 NMAC
- ☐ Dike Protection and Structural Integrity Design: based upon the appropriate requirements of 19.15.17.11 NMAC
- ☐ Leak Detection Design - based upon the appropriate requirements of 19.15.17.11 NMAC
- ☐ Liner Specifications and Compatibility Assessment - based upon the appropriate requirements of 19.15.17.11 NMAC
- ☐ Quality Control/Quality Assurance Construction and Installation Plan
- ☐ Operating and Maintenance Plan - based upon the appropriate requirements of 19.15.17.12 NMAC
- ☐ Freeboard and Overtopping Prevention Plan - based upon the appropriate requirements of 19.15.17.11 NMAC
- ☐ Nuisance or Hazardous Odors, including H<sub>2</sub>S, Prevention Plan
- ☐ Emergency Response Plan
- ☐ Oil Field Waste Stream Characterization
- ☐ Monitoring and Inspection Plan
- ☐ Erosion Control Plan
- ☐ Closure Plan - based upon the appropriate requirements of Subsection C of 19.15.17.9 NMAC and 19.15.17.13 NMAC

14

**Proposed Closure:** 19.15.17.13 NMAC

*Instructions: Please complete the applicable boxes, Boxes 14 through 18, in regards to the proposed closure plan.*

Type: ☒ Drilling ☐ Workover ☐ Emergency ☐ Cavitation ☐ P&A ☐ Permanent Pit ☐ Below-grade Tank ☐ Closed-loop System  
☐ Alternative

Proposed Closure Method: ☐ Waste Excavation and Removal  
☐ Waste Removal (Closed-loop systems only)  
☒ On-site Closure Method (only for temporary pits and closed-loop systems)  
☒ In-place Burial ☐ On-site Trench  
☐ Alternative Closure Method (Exceptions must be submitted to the Santa Fe Environmental Bureau for consideration)

15

**Waste Excavation and Removal Closure Plan Checklist:** (19.15.17.13 NMAC) *Instructions: Each of the following items must be attached to the closure plan. Please indicate, by a check mark in the box, that the documents are attached.*

- ☐ Protocols and Procedures - based upon the appropriate requirements of 19.15.17.13 NMAC
- ☐ Confirmation Sampling Plan (if applicable) - based upon the appropriate requirements of Subsection F of 19.15.17.13 NMAC
- ☐ Disposal Facility Name and Permit Number (for liquids, drilling fluids and drill cuttings)
- ☐ Soil Backfill and Cover Design Specifications - based upon the appropriate requirements of Subsection H of 19.15.17.13 NMAC
- ☐ Re-vegetation Plan - based upon the appropriate requirements of Subsection I of 19.15.17.13 NMAC
- ☐ Site Reclamation Plan - based upon the appropriate requirements of Subsection G of 19.15.17.13 NMAC

**Waste Removal Closure For Closed-loop Systems That Utilize Above Ground Steel Tanks or Haul-off Bins Only:** (19.15 17.13.D NMAC)

*Instructions: Please identify the facility or facilities for the disposal of liquids, drilling fluids and drill cuttings. Use attachment if more than two facilities are required*

Disposal Facility Name: \_\_\_\_\_ Disposal Facility Permit #: \_\_\_\_\_

Disposal Facility Name: \_\_\_\_\_ Disposal Facility Permit #: \_\_\_\_\_

Will any of the proposed closed-loop system operations and associated activities occur on or in areas that *will not* be used for future service and operations?

☐ Yes (If yes, please provide the information) ☐ No

*Required for impacted areas which will not be used for future service and operations:*

☐ Soil Backfill and Cover Design Specification - based upon the appropriate requirements of Subsection H of 19.15 17.13 NMAC

☐ Re-vegetation Plan - based upon the appropriate requirements of Subsection I of 19.15.17.13 NMAC

☐ Site Reclamation Plan - based upon the appropriate requirements of Subsection G of 19.15.17.13 NMAC

**Siting Criteria (Regarding on-site closure methods only):** 19.15.17 10 NMAC

*Instructions: Each siting criteria requires a demonstration of compliance in the closure plan. Recommendations of acceptable source material are provided below. Requests regarding changes to certain siting criteria may require administrative approval from the appropriate district office or may be considered an exception which must be submitted to the Santa Fe Environmental Bureau office for consideration of approval. Justifications and/or demonstrations of equivalency are required. Please refer to 19.15 17 10 NMAC for guidance*

Ground water is less than 50 feet below the bottom of the buried waste.

- NM Office of the State Engineer - iWATERS database search; USGS Data obtained from nearby wells

☐ Yes ☒ No

☐ N/A

Ground water is between 50 and 100 feet below the bottom of the buried waste

- NM Office of the State Engineer - iWATERS database search; USGS Data obtained from nearby wells

☐ Yes ☒ No

☐ N/A

Ground water is more than 100 feet below the bottom of the buried waste.

- NM Office of the State Engineer - iWATERS database search; USGS Data obtained from nearby wells

☒ Yes ☐ No

☐ N/A

Within 300 feet of a continuously flowing watercourse, or 200 feet of any other significant watercourse or lakebed, sinkhole, or playa lake (measured from the ordinary high-water mark)

- Topographic map; Visual inspection (certification) of the proposed site

☐ Yes ☒ No

Within 300 feet from a permanent residence, school, hospital, institution, or church in existence at the time of initial application.

- Visual inspection (certification) of the proposed site; Aerial photo, satellite image

☐ Yes ☒ No

☐ Yes ☒ No

Within 500 horizontal feet of a private, domestic fresh water well or spring that less than five households use for domestic or stock watering purposes, or within 1000 horizontal feet of any other fresh water well or spring, in existence at the time of the initial application.

- NM Office of the State Engineer - iWATERS database; Visual inspection (certification) of the proposed site

☐ Yes ☒ No

Within incorporated municipal boundaries or within a defined municipal fresh water well field covered under a municipal ordinance adopted pursuant to NMSA 1978, Section 3-27-3, as amended.

- Written confirmation or verification from the municipality; Written approval obtained from the municipality

☐ Yes ☒ No

Within 500 feet of a wetland

- US Fish and Wildlife Wetland Identification map; Topographic map; Visual inspection (certification) of the proposed site

☐ Yes ☒ No

Within the area overlying a subsurface mine.

- Written confirmation or verification or map from the NM EMNRD-Mining and Mineral Division

☐ Yes ☒ No

Within an unstable area.

- Engineering measures incorporated into the design; NM Bureau of Geology & Mineral Resources; USGS; NM Geological Society; Topographic map

☐ Yes ☒ No

Within a 100-year floodplain.

- FEMA map

☐ Yes ☒ No

**On-Site Closure Plan Checklist:** (19.15 17.13 NMAC) *Instructions: Each of the following items must be attached to the closure plan. Please indicate, by a check mark in the box, that the documents are attached.*

☒ Siting Criteria Compliance Demonstrations - based upon the appropriate requirements of 19.15.17.10 NMAC

☒ Proof of Surface Owner Notice - based upon the appropriate requirements of Subsection F of 19.15.17.13 NMAC

☐ Construction/Design Plan of Burial Trench (if applicable) based upon the appropriate requirements of 19.15.17.11 NMAC

☐ Construction/Design Plan of Temporary Pit (for in place burial of a drying pad) - based upon the appropriate requirements of 19.15.17.11 NMAC

☒ Protocols and Procedures - based upon the appropriate requirements of 19.15.17.13 NMAC

☐ Confirmation Sampling Plan (if applicable) - based upon the appropriate requirements of Subsection F of 19.15.17.13 NMAC

☒ Waste Material Sampling Plan - based upon the appropriate requirements of Subsection F of 19.15.17.13 NMAC

☒ Disposal Facility Name and Permit Number (for liquids, drilling fluids and drill cuttings or in case on-site closure standards cannot be achieved)

☒ Soil Cover Design - based upon the appropriate requirements of Subsection H of 19.15.17 13 NMAC

☒ Re-vegetation Plan - based upon the appropriate requirements of Subsection I of 19.15.17.13 NMAC

☒ Site Reclamation Plan - based upon the appropriate requirements of Subsection G of 19.15.17.13 NMAC

19

**Operator Application Certification:**

I hereby certify that the information submitted with this application is true, accurate and complete to the best of my knowledge and belief.

Name (Print): Crystal Tafoya Title: Regulatory Technician  
 Signature: *Crystal Tafoya* Date: 1/2/09  
 e-mail address: crystal.tafoya@conocophillips.com Telephone: 505-326-9837

20

**OCD Approval:** ☒ Permit Application (including closure plan) ☐ Closure Plan (only) ☐ OCD Conditions (see attachment)

**OCD Representative Signature:** *Brandon Paul* **Approval Date:** 1-13-08

**Title:** Enviro Spec **OCD Permit Number:** \_\_\_\_\_

21

**Closure Report (required within 60 days of closure completion):** Subsection K of 19 15 17 13 NMAC

*Instructions: Operators are required to obtain an approved closure plan prior to implementing any closure activities and submitting the closure report. The closure report is required to be submitted to the division within 60 days of the completion of the closure activities. Please do not complete this section of the form until an approved closure plan has been obtained and the closure activities have been completed.*

☐ **Closure Completion Date:** \_\_\_\_\_

22

**Closure Method:**

- ☐ Waste Excavation and Removal ☐ On-site Closure Method ☐ Alternative Closure Method ☐ Waste Removal (Closed-loop systems only)  
☐ If different from approved plan, please explain.

23

**Closure Report Regarding Waste Removal Closure For Closed-loop Systems That Utilize Above Ground Steel Tanks or Haul-off Bins Only:**

*Instructions: Please identify the facility or facilities for where the liquids, drilling fluids and drill cuttings were disposed. Use attachment if more than two facilities were utilized.*

Disposal Facility Name: \_\_\_\_\_ Disposal Facility Permit Number: \_\_\_\_\_

Disposal Facility Name: \_\_\_\_\_ Disposal Facility Permit Number: \_\_\_\_\_

Were the closed-loop system operations and associated activities performed on or in areas that *will not* be used for future service and operations?

☐ Yes (If yes, please demonstrate compliance to the items below) ☐ No

*Required for impacted areas which will not be used for future service and operations:*

- ☐ Site Reclamation (Photo Documentation)  
☐ Soil Backfilling and Cover Installation  
☐ Re-vegetation Application Rates and Seeding Technique

24

**Closure Report Attachment Checklist:** *Instructions: Each of the following items must be attached to the closure report. Please indicate, by a check mark in the box, that the documents are attached.*

- ☐ Proof of Closure Notice (surface owner and division)  
☐ Proof of Deed Notice (required for on-site closure)  
☐ Plot Plan (for on-site closures and temporary pits)  
☐ Confirmation Sampling Analytical Results (if applicable)  
☐ Waste Material Sampling Analytical Results (if applicable)  
☐ Disposal Facility Name and Permit Number  
☐ Soil Backfilling and Cover Installation  
☐ Re-vegetation Application Rates and Seeding Technique  
☐ Site Reclamation (Photo Documentation)

On-site Closure Location: Latitude: \_\_\_\_\_ Longitude: \_\_\_\_\_ NAD ☐ 1927 ☐ 1983

25

**Operator Closure Certification:**

*I hereby certify that the information and attachments submitted with this closure report is true, accurate and complete to the best of my knowledge and belief. I also certify that the closure complies with all applicable closure requirements and conditions specified in the approved closure plan*

Name (Print): \_\_\_\_\_ Title: \_\_\_\_\_

Signature: \_\_\_\_\_ Date: \_\_\_\_\_

e-mail address: \_\_\_\_\_ Telephone: \_\_\_\_\_

**New Mexico Office of the State Engineer**  
**POD Reports and Downloads**

Township:  Range:  Sections:

NAD27 X:  Y:  Zone:  Search Radius:

County:  Basin:  Number:  Suffix:

Owner Name: (First)  (Last)  ☐ Non-Domestic ☐ Domestic ☒ All

[POD / Surface Data Report](#)

[Avg Depth to Water Report](#)

[Water Column Report](#)

[Clear Form](#)

[iWATERS Menu](#)

[Help](#)

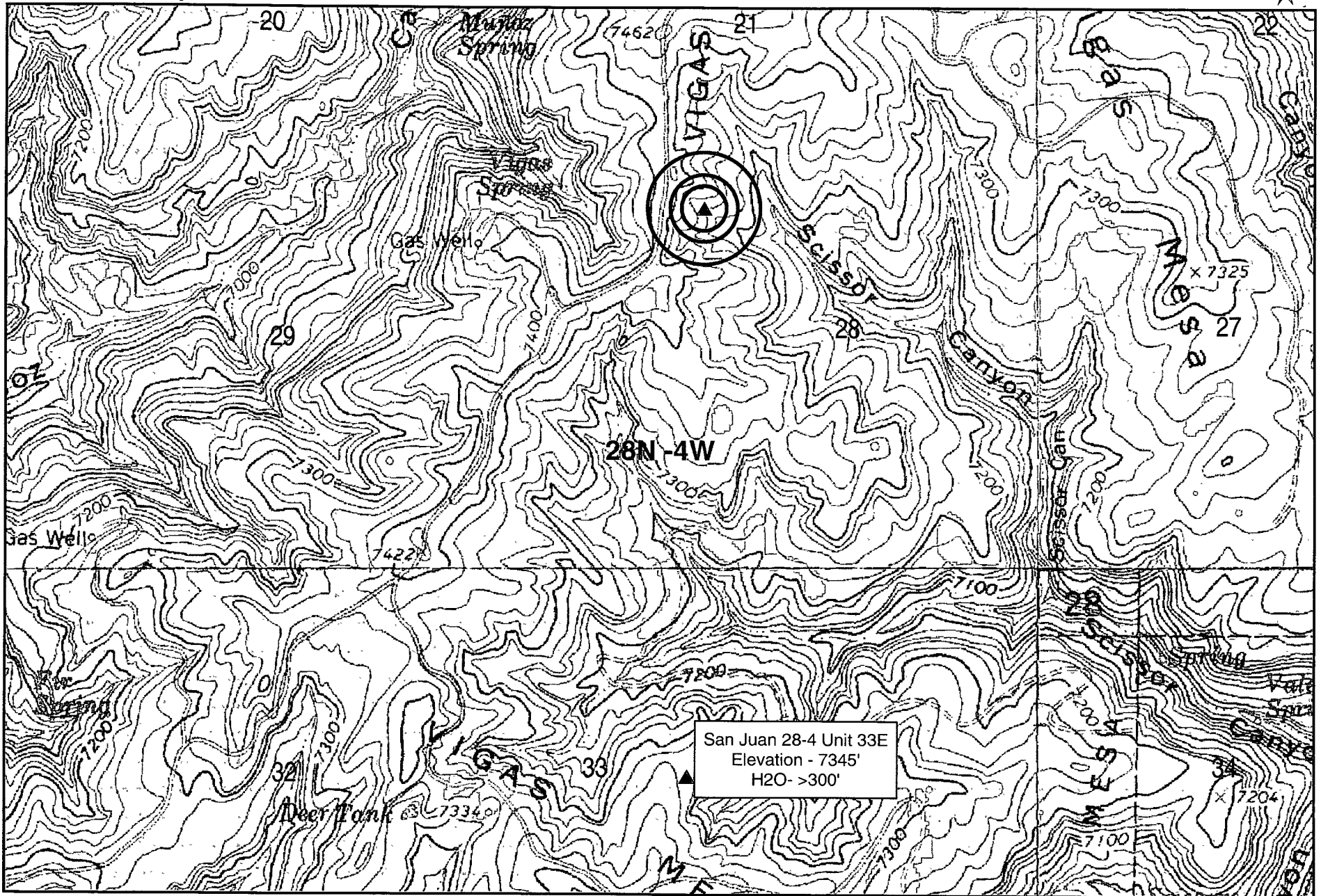
**WATER COLUMN REPORT 12/15/2008**

(quarters are 1=NW 2=NE 3=SW 4=SE)

(quarters are biggest to smallest)

POD Number	Tws	Rng	Sec	q	q	q	Zone	X	Y	Depth Well	Depth Water	Water (in feet) Column
------------	-----	-----	-----	---	---	---	------	---	---	---------------	----------------	---------------------------

No Records found, try again



Wetlands data aquired from U.S. Fish and Wildlife  
<http://wetlandswms.er.usgs.gov>

**Ground Water**

- + iWaters
- + COP

**Buffers**

- 200ft
- 300ft
- 500ft
- Wetlands

0 500 1,000 Feet  
 1:13,340

NAD\_1983\_StatePlane\_ NMWest\_FIPS\_3003  
 8/08

**TIERRA CORROSION CONTROL, INC.**  
**DRILLING LOG**

COMPANY: Conoco Phillips  
LOCATION: San Juan 28-4 #33E  
STATE: NM  
BIT SIZE: 7 7/8"  
LBS COKE BACKFILL: 2,600#  
ANODE TYPE: 3" X 60" Duriron

DATE: August 21, 2008  
LEGALS: Sec33 T28N r4W  
DRILLER: Gilbert Peck  
CASING SIZE/TYPE: 8" X 20' PVC  
VENT PIPE: 300'  
ANODE AMOUNT: 10

COUNTY: Rio Arriba  
DEPTH: 300'  
COKE TYPE: Asbury  
PERF PIPE: 140'  
BOULDER DRILLING: None

DEPTH	DRILLER'S LOG	AMPS	DEPTH	DRILLER'S LOG	AMPS
20	Casing	2	310		
25	Sand	.3	315		
30	↓	.2	320		
35		.2	325		
40		.2	330		
45		.2	335		
50	↓	6	340		
55	Gray Shale	10	345		
60		16	350		
65		1.0	355		
70	Sandstone	.3	360		
75	↓	3	365		
80		.4	370		
85	↓	9	375		
90	Gray Shale	1.4	380		
95	↓	1.3	385		
100		1.5	390		
105	↓	1.5	395		
110	Sandstone	.4	400		
115		.9	405		
120	Gray Shale	1.2	410		
125	Sandstone	.7	415		
130		6	420		
135		6	425		
140	Gray Shale	2.2	430		
145	↓	2.0	435		
150		1.4	440		
155	↓	1.1	445		
160	Sandstone	.9	450		
165	↓	.7	455		
170		.6	460		
175		.7	465		
180		.7	470		
185		.8	475		
190	↓	9	480		
195	Gray Shale	1.1	485		
200		1.5	490		
205		1.6	495		
210		2.0	500		
215		2.2			
220		2.4			
225		2.3			
230		2.2			
235		1.6			
240		1.5			
245		1.2			
250		1.1			
255		1.2			
260		1.4			
265		1.9			
270		2.0			
275		1.6			
280		1.5			
285		1.2			
290	↓	1.1			
295	Sandstone	.9			
300		td			
305					

ANODE #	DEPTH	NO COKE	COKE
1	290	1.1	4.1
2	280	1.5	4.7
3	270	2.0	5.1
4	260	1.4	4.8
5	250	1.1	3.1
6	240	1.5	5.3
7	230	2.2	5.6
8	220	2.4	5.6
9	210	2.0	4.9
10	200	1.5	3.1
11			
12			
13			
14			
15			
16			
17			
18			
19			
20			
21			
22			
23			
24			
25			
26			
27			
28			
29			
30			

WATER DEPTH: None  
ISOLATION PLUGS:  
LOGGING VOLTS: 12.23  
VOLT SOURCE: AUTO BATTERY  
TOTAL AMPS: 12.3  
TOTAL GB RESISTANCE: .99  
REMARKS:

UNITED STATES  
DEPARTMENT OF THE INTERIOR  
BUREAU OF LAND MANAGEMENT

SUBMIT IN DUPLICATE

(See other in-  
structions on  
reverse side)

FOR APPROVED  
OMB NO. 1004-0137

Expires: December 31, 1991

5. LEASE DESIGNATION AND SERIAL NO.  
NMSF-079731A

6. IF INDIAN, ALLOTTEE OR TRIBE NAME

7. UNIT AGREEMENT NAME

San Juan 28-4 Unit N4N4-0784104

8. FARM OR LEASE NAME, WELL NO.

#33E

9. API WELL NO.

30-039-293700002

10. FIELD AND POOL, OR WILDCAT

Blanco MV/ Basin DK

11. SEC., T., R., M., OR BLOCK AND SURVEY  
OR AREA

Sec. 33, T28N, R4W, NMPM

WELL COMPLETION OR RECOMPLETION REPORT AND LOG\*

1a. TYPE OF WELL:

OIL WELL ☐ GAS WELL ☒ DRY ☐ Other ☐

b. TYPE OF COMPLETION:

NEW WELL ☒ WORK OVER ☐ DEEP-EN ☐ PLUG BACK ☐ DIFF. RESVR ☐ Other ☐

2. NAME OF OPERATOR

BURLINGTON RESOURCES OIL & GAS COMPANY LP

3. ADDRESS AND TELEPHONE NO.

PO Box 4289, Farmington, NM 87499 (505) 326-8700

4. LOCATION OF WELL (Report location clearly and in accordance with any State requirements)\*

At surface

Unit E (SWNW), 1460' FNL & 1040' FWL,

At top prod. interval reported below

SAME

At total depth

SAME

14. PERMIT NO.

DATE ISSUED

12. COUNTY OR  
PARISH

13. STATE

Rio Arriba

New Mexico

15. DATE SPUNDED

6/25/06

16. DATE T.D. REACHED

7/4/06

17. DATE COMPL. (Ready to prod.)

9/14/06

18. ELEVATIONS (DF, RKB, RT, BR, ETC.)

KB - 7345'; GL - 7333'

19. ELEV. CASINGHEAD

20. TOTAL DEPTH, MD & TVD

8717'

21. PLUG, BACK T.D., MD & TVD

8715'

22. IF MULTIPLE COMPL.,  
HOW MANY\*

2

23. INTERVALS  
DRILLED BY

ROTARY TOOLS

CABLE TOOLS

X

24. PRODUCTION INTERVAL (S) OF THIS COMPLETION-TOP, BOTTOM, NAME (MD AND TVD)\*

Blanco Mesaverde -5868' - 6596'

25. WAS DIRECTIONAL  
SURVEY MADE  
Yes

26. LOGS

Gamma Ray/CCL Acoustic Cement Bond Log

27. WAS WELL CORED  
No

CASING RECORD (Report all strings set in well)

CASING SIZE/GRADE	WEIGHT, LB./FT.	DEPTH SET (MD)	HOLE SIZE	TOP OF CEMENT, CEMENTING RECORD	AMOUNT PULLED
9-5/8" H-40	32.3#	319'	12-1/4"	TOC- SURF'; 271 sx (347 cf)	38 bbls
7" J-55	20#	4493'	8-3/4"	TOC- SURF'; 653 sx (1337 cf)	Stage tool @ 3822; Circ. 81 bbls
4-1/2" L-80	11.6#	8717'	6-1/4"	TOC -2850'; 319 sx (638 cf)	

LINER RECORD				TUBING RECORD		
SIZE	TOP (MD)	BOTTOM (MD)	SACKS CEMENT*	SIZE	DEPTH SET (MD)	PACKER SET (MD)
				2-3/8" 4.7# J-55	8621'	

31. PERFORATION RECORD (Interval, size and number)

Mesaverde @ .34" holes  
PT/LKT - 6384' - 6596' = 31 holes  
MNF - CLH - 5868' - 6348' = 34 holes

Total 65 holes

32. ACID, SHOT, FRACTURE, CEMENT SQUEEZE, ETC.

DEPTH INTERVAL (MD)	AMOUNT AND KIND OF MATERIAL USED
6384' - 6596'	10 bbls 15% HCL; 47,502 gal 60% Slickwater N2 foam
	w/100,000# 20/40 Brady sand & 1,297,000 scf N2
5868' - 6348'	10 bbls 15% HCL; 39,816 gal 65% Slickwater N2 foam
	w/100,000# 20/40 Brady sand & 1,426,000 scf N2

33. PRODUCTION		WELL STATUS (Producing or shut-in)	
DATE FIRST PRODUCTION	PRODUCTION METHOD (Flowing, gas lift, pumping—size and type of pump)	SI	SI
9/12/06	flowing		
DATE OF TEST	HOURS TESTED	CHOKE SIZE	PROD'N FOR TEST PERIOD
9/12/06	1 hr	2"	0
FLOW, TUBING PRESS.	CASING PRESSURE	CALCULATED 24-HOUR RATE	OIL-BBL GAS-MCF WATER-BBL
SI - 977#	SI - 880#	0	1598 mctd
			1-1/2 bbls

34. DISPOSITION OF GAS (Sold, used for fuel, vented, etc.)

To be sold

TEST WITNESSED BY

35. LIST OF ATTACHMENTS

This is a DK/MV commingled well per order DHC 2217AZ

36. I hereby certify that the foregoing and attached information is complete and correct as determined from all available records

SIGNED

TITLE

Sr. Regulatory Specialist

DATE

9/29/06

\*(See Instructions and Spaces for Additional Data on Reverse Side)

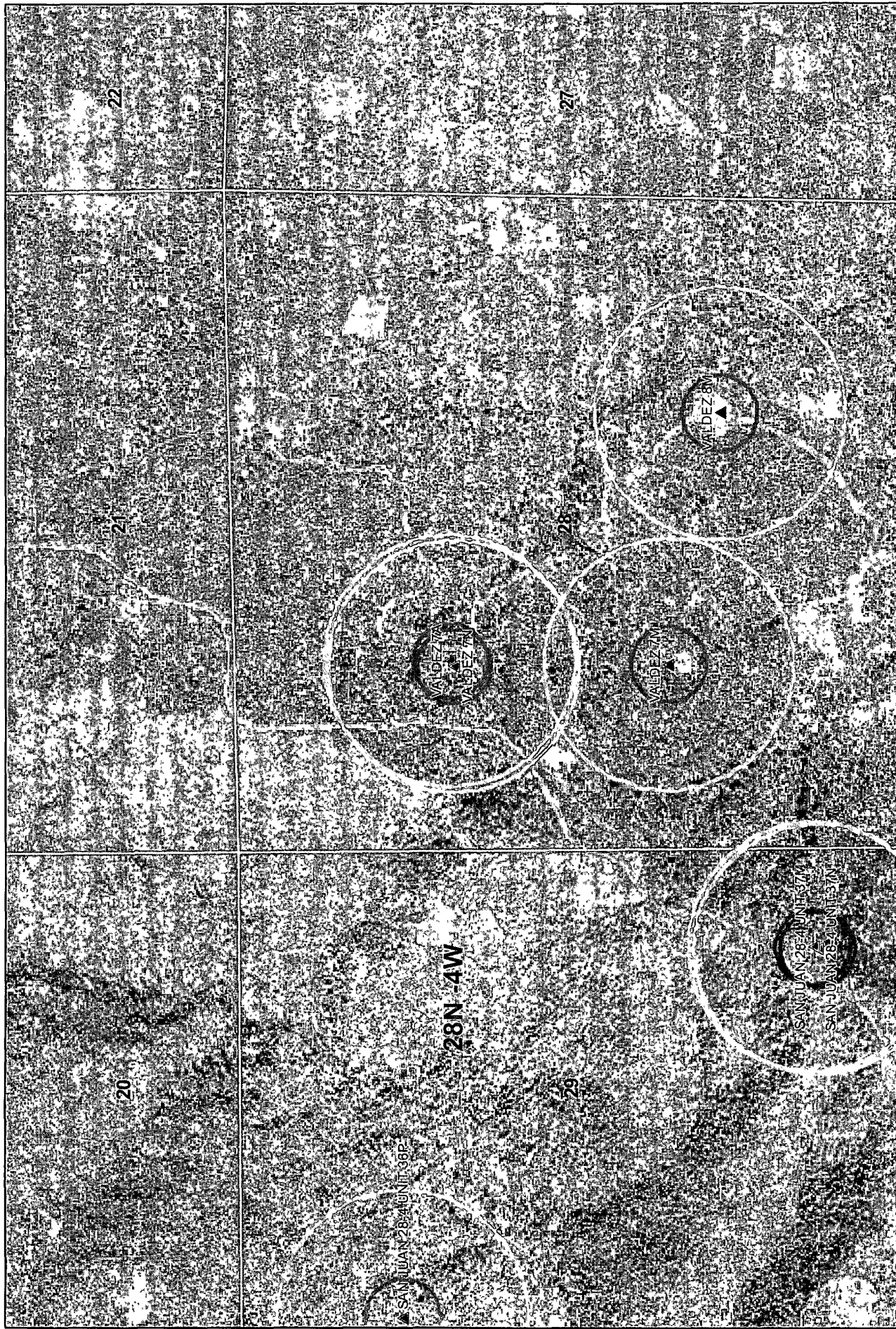
Title 18 U.S.C. Section 1001, makes it a crime for any person knowingly and willfully to make to any department or agency of the United States any false, fictitious or fraudulent statements or representations as to any matter within its jurisdiction.

ACCEPTED FOR RECORD

OCT 04 2006

FARMINGTON FIELD OFFICE  
BY JH Salyers

NMOCD



Data Source  
Aerial flown locally Sedgewick in 2005.

1000ft 300ft

0 500 1,000 Feet  
1:12,000

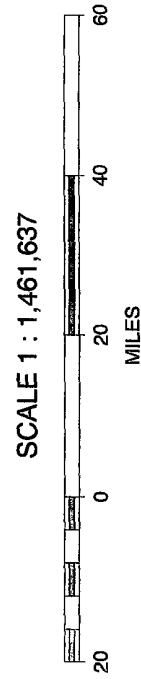
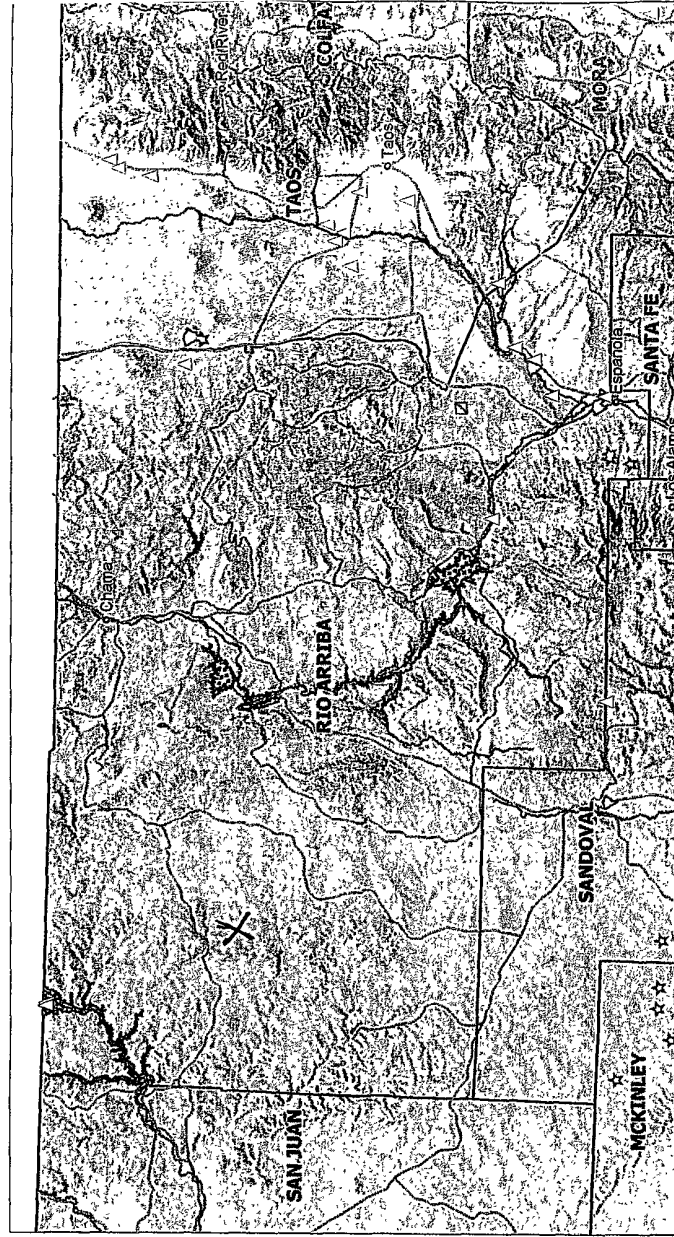
NAD 1983 SP  
NM West\_FIPS\_3003  
Aug 27, 2008

# MMQonline Public Version Map

**Mines, Mills & Quarries Commodity Groups**  
 △ Aggregate & Stone Mines  
 ◆ Coal Mines  
 ☆ Industrial Minerals Mines  
 ▽ Industrial Minerals Mills  
 ▣ Metal Mines and Mill Concentrate  
 ▤ Potash Mines & Refineries  
 ∴ Smelters & Refinery Ops.  
 ⚙ Uranium Mines  
 ⊕ Uranium Mills

**Population**  
 ● Cities - major

**Transportation**  
 — Railways



## ***Hydrogeological report for Valdez 7N***

### **Regional Hydrogeological context:**

The San Jose Formation of Eocene age occurs in New Mexico and Colorado, and its outcrop forms the land surface over much of the eastern half of the central basin. It overlies the Nacimiento Formation in the area generally south of the Colorado-New Mexico State line and overlies the Animas Formation in the area generally north of the State line.

The San Jose Formation was deposited in various fluvial-type environments. In general, the unit consists of an interbedded sequence of sandstone, siltstone, and variegated shale. Thickness of the San Jose Formation generally increases from west to east (200 feet in the west and south to almost 2,700 feet in the center of the structural basin).

Ground water is associated with alluvial and fluvial sandstone aquifers. Thus, the occurrence of ground water is mainly controlled by the distribution of sandstone in the formation. The distribution of such sandstone is the result of original depositional extent plus any post-depositional modifications, namely erosion and structural deformation. Transmissivity data for San Jose Formation are minimal. Values of 40 and 120 feet squared per day were determined from two aquifer tests (Stone et al, 1983, table 5). The reported or measured discharge from 46 water wells completed in San Jose Formation ranges from 0.15 to 61 gallons per minute and the median is 5 gallons per minute. Most of the wells provide water for livestock and domestic use.

The San Jose Formation is a very suitable unit for recharge from precipitation because soils that form on the unit are sandy and highly permeable and therefore readily adsorb precipitation. However, low annual precipitation, relatively high transpiration and evaporation rates, and deep dissection of the San Jose Formation by the San Juan River and its tributaries all tend to reduce the effective recharge to the unit.

Stone et al., 1983, Hydrogeology and Water Resources of the San Juan Basin, New Mexico: Socorro, New Mexico Bureau of Mines and Mineral Resources Hydrologic Report 6, 70 p.

## **Siting Criteria Compliance Demonstration & Hydro Geologic Analysis**

The Valdez 7N is not located in an unstable area. The location is not over a mine and is not on the side of a hill as indicated on the Mines, Mills and Quarries Map and Topographic Map. The location of the excavated pit material will not be located within 300' of any continuously flowing watercourse or 200' from any other watercourse as indicated on the Topographic Map. The FEMA Map for the subject well is unavailable due to its location being in the forest. FEMA does not provide floodplain information for Forest Service land. This well is not located near a wash or watercourse and is not in 100 year floodplain as visible on the topographic map. The Cathodic well data from the San Juan 28-4 Unit 33E has an elevation of 7345' and groundwater depth of greater than 300'. The subject well has an elevation of 7338' which is 7' less than the San Juan 28-4 Unit 33E, therefore the groundwater depth is greater than 300'. There are no iWATERS data points located in the area as indicated on the TOPO Map. The hydro geologic analysis indicates the groundwater depth and the San Jose formation will create a stable area for this new location.

## Tafoya, Crystal

---

**From:** Tafoya, Crystal  
**Sent:** Wednesday, December 31, 2008 3:02 PM  
**To:** 'mark\_kelly@nm.blm.gov'; 'jreidinger@fs.fed.us'  
**Cc:** Tafoya, Crystal  
**Subject:** Valdez 7N

The subject well has a temporary pit that will be closed on-site. Please let me know if you have any questions.

Thanks,

Crystal L. Tafoya  
Regulatory Technician  
**ConocoPhillips Company**  
San Juan Business Unit  
Phone: (505) 326-9837  
Email: Crystal.Tafoya@conocophillips.com

District I

1625 N. French Dr., Hobbs, NM 88240

District II

1301 W. Grand Avenue, Artesia, NM 88210

District III

1000 Rio Brazos Rd., Aztec, NM 87410

District IV

1220 S. St. Francis Dr., Santa Fe, NM 87505

State of New Mexico  
Energy, Minerals & Natural Resources Department  
OIL CONSERVATION DIVISION  
1220 South St. Francis Dr.  
Santa Fe, NM 87505

FEB 22 2008

Form C-102

Revised October 12, 2005

Submit to Appropriate District Office

State Lease - 4 Copies

Fee Lease - 3 Copies

☐ AMENDED REPORT

## WELL LOCATION AND ACREAGE DEDICATION PLAT

<sup>1</sup> API Number 30-039-30491	<sup>2</sup> Pool Code 71599/72319	<sup>3</sup> Pool Name Blanco	<sup>4</sup> Basin MESAVERDE / DAKOTA
<sup>5</sup> Property Code 7620	<sup>6</sup> Property Name VALDEZ		<sup>7</sup> Well Number 7N
<sup>8</sup> OGRID No. 14538	<sup>9</sup> Operator Name BURLINGTON RESOURCES OIL AND GAS COMPANY		<sup>10</sup> Elevation 7338

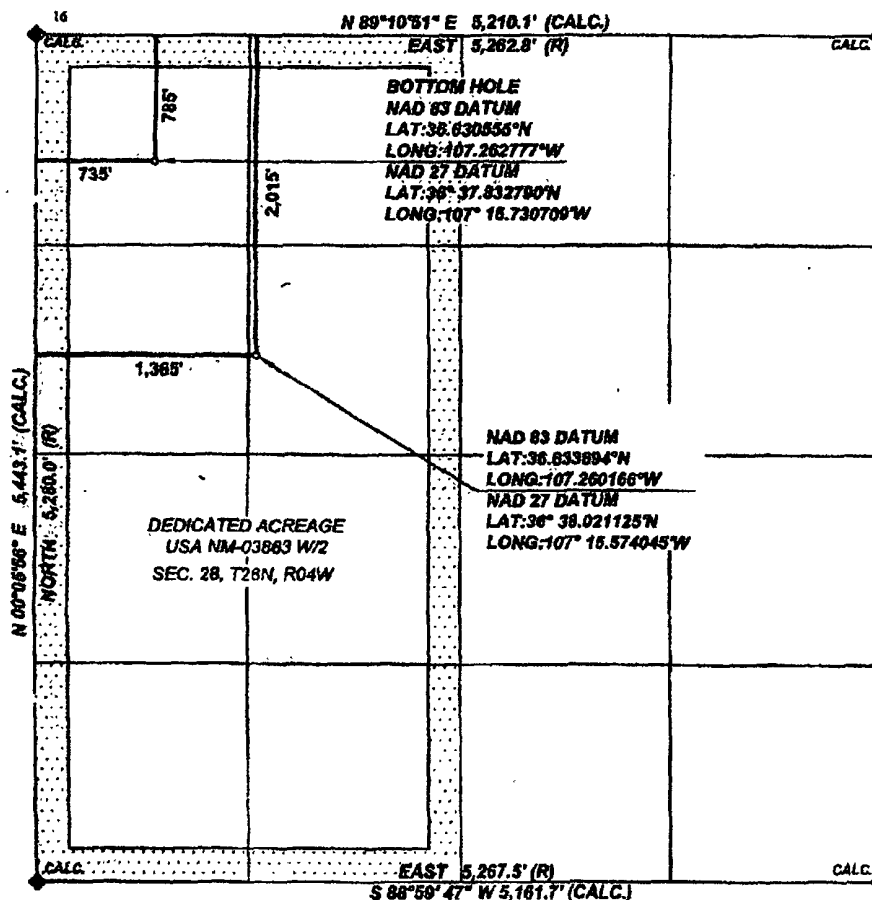
<sup>10</sup> SURFACE LOCATION

UL or lot no.	Section	Township	Range	Lot 1/4	Feet from the	North/South line	Feet from the	East/West line	County
F	28	28	4		2015	NORTH	1365	WEST	RIO ARRIBA

<sup>11</sup> Bottom Hole Location If Different From Surface

UL or lot no.	Section	Township	Range	Lot 1/4	Feet from the	North/South line	Feet from the	East/West line	County
D	28	28	4		785	NORTH	735	WEST	RIO ARRIBA

<sup>12</sup> Dedicated Acres 320 acres	<sup>13</sup> Joint or Infill (W2)	<sup>14</sup> Consolidation Code	<sup>15</sup> Order No.
--	---------------------------------------	----------------------------------	-------------------------

NO ALLOWABLE WILL BE ASSIGNED TO THIS COMPLETION UNTIL ALL INTERESTS HAVE BEEN  
CONSOLIDATED OR A NON-STANDARD UNIT HAS BEEN APPROVED BY THE DIVISION<sup>17</sup> OPERATOR CERTIFICATION

I hereby certify that the information contained herein is true and correct to the best of my knowledge and belief, and that this organization either owns a working interest or unleased mineral interest in the land including the proposed bottom hole location or has a right to drill this well at this location pursuant to a contract with an owner of such a mineral or working interest, or to a voluntary pooling agreement or a compulsory pooling order heretofore entered by the division.

Sasha Spangler

Signature

Sasha Spangler

Printed Name

Regulatory Technician

Title and E-mail Address

12-12-07

Date

<sup>18</sup> SURVEYOR CERTIFICATION

I hereby certify that the well location shown on this plat was plotted from field notes of actual surveys made by me or under my supervision, and that the same is true and correct to the best of my belief.

Date of Survey: 12/14/06

Signature and Seal of Professional Surveyor:



Certificate Number: NM 11393

# **Burlington Resources Oil & Gas Company, LP**

## **San Juan Basin**

### **Closure Plan**

In accordance with Rule 19.15.17.12 NMAC the following information describes the closure requirements of temporary pits on Burlington Resources Oil & Gas Company, LP (BR) locations. This is BR's standard procedure for all temporary pits. A separate plan will be submitted for any temporary pit which does not conform to this plan.

All closure activities will include proper documentation and be available for review upon request and will be submitted to OCD within 60 days of closure of pit closure. Closure report will be filed on C-144 and incorporate the following:

- Details on Capping and Covering, where applicable.
- Plot Plan (Pit Diagram)
- Inspection Reports
- Sampling Results
- C-105
- Copy of Deed Notice will be filed with County Clerk

#### **General Plan:**

1. All free standing liquids will be removed at the start of the pit closure process from the pit and disposed of in a division-approved facility or recycle, reuse or reclaim the liquids in a manner that the appropriate division district office approves. The facilities to be used will be Basin Disposal (Permit #NM-01-005) and Envirotech Land Farm (Permit #NM-01-011).
2. The preferred method of closure for all temporary pits will be on-site burial, assuming that all the criteria listed in sub-section (B) of 19.15.17.13 are met.
3. The surface owner shall be notified of BR's closing of the temporary pit prior to closure as per the approved closure plan via certified mail, return receipt requested.
4. Within 6 months of the Rig Off status occurring BR will ensure that temporary pits are closed, re-contoured, and reseeded.
5. Notice of Closure will be given prior to closure to the Aztec Division office between 72 hours and one week via email, or verbally. The notification of closure will include the following:
  - i. Operator's name
  - ii. Location by Unit Letter, Section, Township, and Range. Well name and API number.
6. Liner of temporary pit shall be removed above "mud level" after stabilization. Removal of liner will consist of manually or mechanically cutting liner at mud level and removing all remaining liner. Care will be taken to remove "All" of the liner i.e., edges of liner entrenched or buried. All excessive liner will be disposed of at the San Juan County Landfill located on CR 3100.
7. Pit contents shall be mixed with non-waste containing, earthen material in order to achieve the solidification process. The solidification process will be accomplished using a combination of natural drying and mechanically mixing. Pit contents will be mixed with non-waste, earthen material to a consistency that is deemed a safe and stable. The mixing ratio shall not exceed 3 parts clean soil to 1 part pit contents.
8. A five point composite sample will be taken of the pit using sampling tools and all samples tested per Subsection B of 19.15.17.13(B)(1)(b). In the event that the criteria are not met, all contents will be handled per Subparagraph (a) of Paragraph (1) of Subsection B of 19.15.17.13 i.e., Dig and haul.

Components	Tests Method	Limit (mg/Kg)
Benzene	EPA SW-846 8021B or 8260B	0.2
BTEX	EPA SW-846 8021B or 8260B	50
TPH	EPA SW-846 418.1	2500
GRO/DRO	EPA SW-846 8015M	500
Chlorides	EPA 300.1	1000/500

9. Upon completion of solidification and testing standards being passed, the pit area will be backfilled with compacted, non-waste containing, earthen material. A minimum of four feet of cover shall be achieved and the cover shall include one foot of suitable material to establish vegetation at the site, or the background thickness of topsoil, whichever is greater. If standard testing fails BR will dig and haul all contents pursuant to 19.15.17.13.i.a. After doing such, confirmation sampling will be conducted to ensure a release has not occurred.
10. During the stabilization process if the liner is ripped by equipment the Aztec OCD office will be notified within 48 hours and the liner will be repaired if possible. If the liner can not be repaired then all contents will be excavated and removed.
11. Dig and Haul Material will be transported to the Envirotech Land Farm located 16 miles south of Bloomfield on Angel Peak Road, CR 7175. Permit # NM010011
12. Re-contouring of location will match fit, shape, line, form and texture of the surrounding. Re-shaping will include drainage control, prevent ponding, and prevent erosion. Natural drainages will be unimpeded and water bars and/or silt traps will be place in areas where needed to prevent erosion on a large scale. Final re-contour shall have a uniform appearance with smooth surface, fitting the natural landscape.
13. Notification will be sent to OCD when the reclaimed area is seeded.
14. BR shall seed the disturbed areas the first growing season after the operator closes the pit. Seeding will be accomplished via drilling on the contour whenever practical or by other division-approved methods. Forest Service stipulated seed mixes will used on federal lands. Vegetative cover will equal 70% of the native perennial vegetative cover (un-impacted) consisting of at least three native plant species, including at least one grass, but not including noxious weeds, and maintain that cover through two successive growing seasons. Repeat seeding or planting will be continued until successful vegetative growth occurs.

<b>Forest Service Seed Mix</b>	<b>Variety</b>	<b>Pounds/Acre</b>
Indian ricegrass	Paloma	1.0
Western wheatgrass	Arriba	2.0
Blue Gramma	Hacheta or Alma	1.0
Antelope Bitterbrush	Unknown	.10
Four-wing saltbush	Unknown	.25
Pubescent wheatgrass	Luna	2.0
Intermediate wheatgrass	Oahe	2.0
Small burnet	Delar	1.0

15. The temporary pit will be located with a steel marker, no less than four inches in diameter, cemented in a hole three feet deep in the center of the onsite burial upon the abandonment of all the wells on the pad. The marker will be flush with the ground to allow access of the active well pad and for safety concerns. The marker will include a threaded collar to be used for future abandonment. The top of the marker will contain a welded steel 12" square plate that indicates the onsite burial of the temporary pit. The plate will be easily removable and a four foot tall riser will be threaded into the top of the collar marker and welded around the base with the operator's information at the time of all wells on the pad are abandoned. The operator's information will include the following: Operator Name, Lease Name, Well Name and number, Unit Number, Section, Township, Range and an indicator that the marker is an onsite burial location.