

**UNITED STATES
DEPARTMENT OF THE INTERIOR
BUREAU OF LAND MANAGEMENT**

RECEIVED

DEC 11 2008

Bureau of Land Management
Farmington Field Office

Sundry Notices and Reports on Wells

1. **Type of Well**
GAS

2. **Name of Operator**

BURLINGTON

RESOURCES OIL & GAS COMPANY LP

3. **Address & Phone No. of Operator**

PO Box 4289, Farmington, NM 87499 (505) 326-9700

4. **Location of Well, Footage, Sec., T, R, M**

Unit J (NWSE), 1450' FSL & 1450' FEL, Section 15, T31N, R12W, NMPM

5. **Lease Number**
SF-077651

6. **If Indian, All. or
Tribe Name**

7. **Unit Agreement Name**

8. **Well Name & Number**
Richardson 12A

9. **API Well No.**
30-045-21880

10. **Field and Pool**
Blanco Mesaverde
Aztar Blanco Pictured Cliffs

11. **County and State**
San Juan Co., NM

12. CHECK APPROPRIATE BOX TO INDICATE NATURE OF NOTICE, REPORT, OTHER DATA**Type of Submission**☒ Notice of Intent☐ Subsequent Report☐ Final Abandonment**Type of Action**☐ Abandonment ☐ Change of Plans☒ Recompletion ☐ New Construction☐ Plugging ☐ Non-Routine Fracturing☐ Casing Repair ☐ Water Shut off☐ Altering Casing ☐ Conversion to Injection☐ Other**13. Describe Proposed or Completed Operations**

Burlington Resources wishes to recomplate this well in the Pictured Cliffs and down hole commingle with the existing Mesaverde. Please see attached procedure, wellbore diagram and PC plat.

RCVD JAN 12 '09
OIL CONS. DIV.

DIST. 3

0 AC 2998 A2

14. I hereby certify that the foregoing is true and correct.

Signed Tamra Sessions Title Staff Regulatory Technician Date 12/11/2008

(This space for Federal or State Office use)

APPROVED BY [Signature] Title Petr. Eng. Date 1/7/09

CONDITION OF APPROVAL, if any:

Title 18 U.S.C. Section 1001, makes it a crime for any person knowingly and willfully to make any department or agency of the United States any false, fictitious or fraudulent statements or representations as to any matter within its jurisdiction

NMOCD

by

(DHC order amended to Aztec PC)
by A. Hayden

Richardson #12A

**Unit J, Section 15, Township 31N, Range 12W
San Juan Co., NM
API#: 30-045-21880**

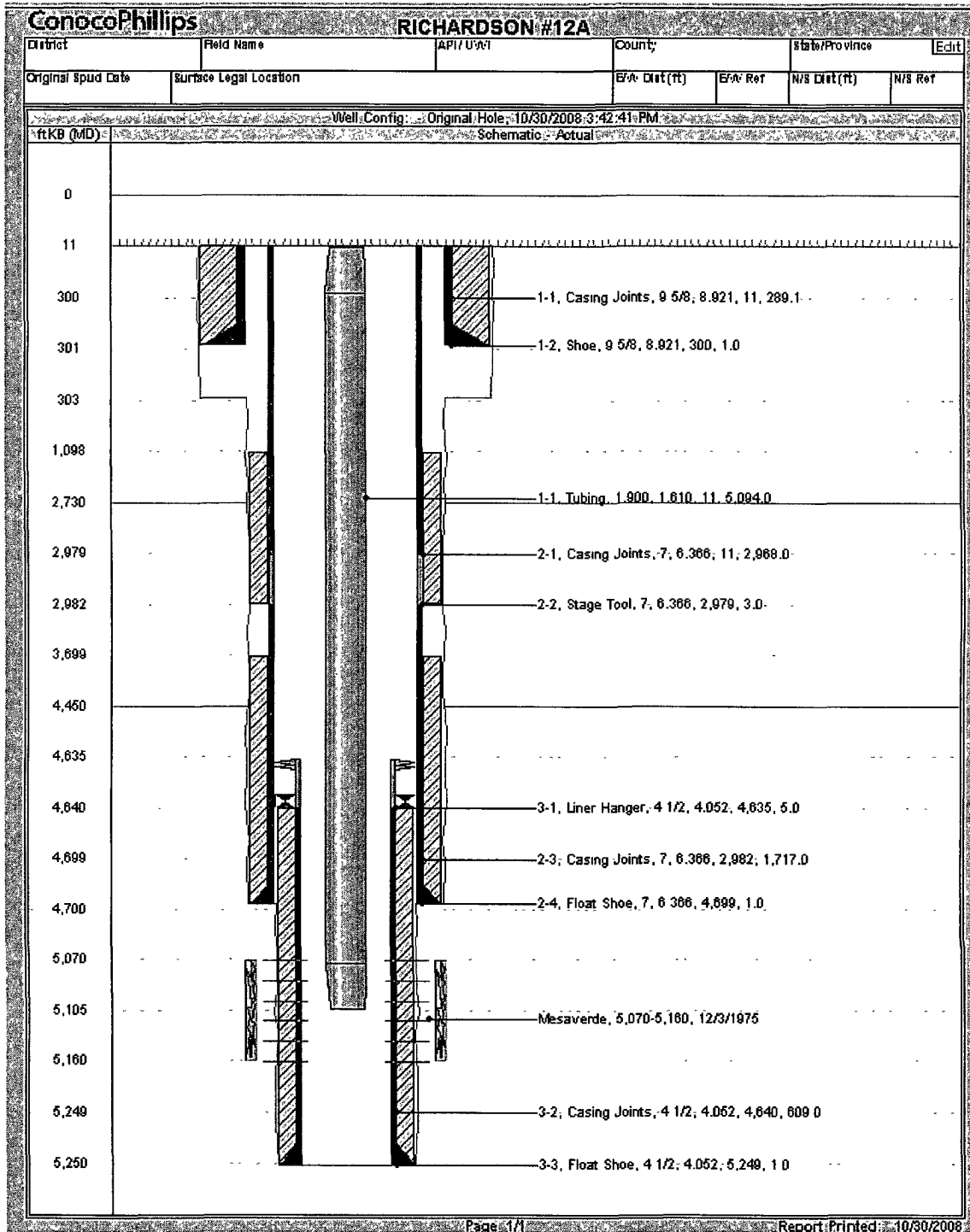
Pictured Cliffs Recompletion Sundry

10/30/2008

Procedure:

1. MIRU service rig. TOOH with current tubing string.
2. MIRU wireline unit. RIH with a gauge ring. POOH. RIH with a composite bridge plug and set at +/- 2,900'.
3. MIRU wireline to run a GR/CCL/CBL/GSL log from the CBP to surface.
4. Perforate and frac the Pictured Cliffs with 100,000# of 20/40 Arizona sand in a 70Q 20# linear gel.
5. Open well to flow back frac on clean-up.
6. RIH with tubing / mill assembly. Clean out to the CBP.
7. Flowtest Pictured Cliffs up the annulus on a 1/2" choke to atmosphere.
8. Once test is complete RIH and drill out the CBP with air / mist. Clean out to liner hanger @ 4635'. TOOH with mill.
9. TIH and cleanout to PBTD @ 5250. Land production tubing and obtain a commingled flowrate up annulus on a 1/2" choke.
10. Release service rig and turn over to production.

CURRENT SCHEMATIC



District I

1625 N. French Dr., Hobbs, NM 88240
Phone:(505) 393-6161 Fax:(505) 393-0720

District II

1301 W. Grand Ave., Artesia, NM 88210
Phone:(505) 748-1283 Fax:(505) 748-9720

District III

1000 Rio Brazos Rd., Aztec, NM 87410
Phone:(505) 334-6178 Fax:(505) 334-6170

District IV

1220 S. St Francis Dr., Santa Fe, NM 87505
Phone:(505) 476-3470 Fax:(505) 476-3462

State of New Mexico
Energy, Minerals and Natural Resources

Oil Conservation Division

1220 S. St Francis Dr.

Santa Fe, NM 87505

Form C-102
Permit 84652

WELL LOCATION AND ACREAGE DEDICATION PLAT

1. API Number 30-045-21880	2. Pool Code 72359 71280	3. Pool Name Aztec BLANCO PICTURED CLIFFS (GAS)
4. Property Code 7422	5. Property Name RICHARDSON	6. Well No. 012A
7. OGRID No. 14538	8. Operator Name BURLINGTON RESOURCES OIL & GAS COMPANY LP	9. Elevation 6278

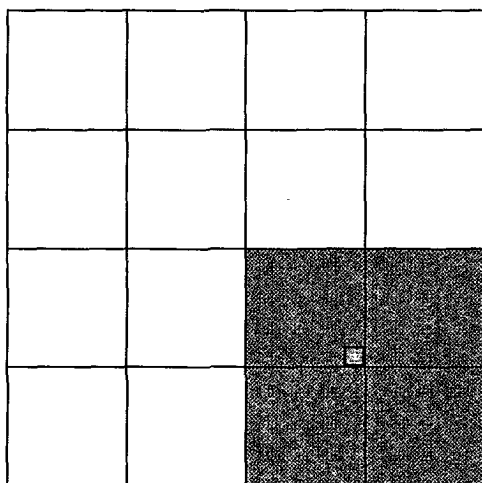
10. Surface Location

UL - Lot J	Section 15	Township 31N	Range 12W	Lot Idn 6	Feet From 1450	N/S Line S	Feet From 1450	E/W Line E	County SAN JUAN
----------------------	----------------------	------------------------	---------------------	---------------------	--------------------------	----------------------	--------------------------	----------------------	---------------------------

11. Bottom Hole Location If Different From Surface

UL - Lot	Section	Township	Range	Lot Idn	Feet From	N/S Line	Feet From	E/W Line	County
12. Dedicated Acres 141.36	13. Joint or Infill	14. Consolidation Code	15. Order No.						

NO ALLOWABLE WILL BE ASSIGNED TO THIS COMPLETION UNTIL ALL INTERESTS HAVE BEEN CONSOLIDATED OR A NON-STANDARD UNIT HAS BEEN APPROVED BY THE DIVISION



OPERATOR CERTIFICATION

I hereby certify that the information contained herein is true and complete to the best of my knowledge and belief, and that this organization either owns a working interest or unleased mineral interest in the land including the proposed bottom hole location(s) or has a right to drill this well at this location pursuant to a contract with an owner of such a mineral or working interest, or to a voluntary pooling agreement or a compulsory pooling order heretofore entered by the division.

E-Signed By: *Tamara Sessions*
Title: **Staff Regulatory Technician**
Date: **11/04/2008**

SURVEYOR CERTIFICATION

I hereby certify that the well location shown on this plat was plotted from field notes of actual surveys made by me or under my supervision, and that the same is true and correct to the best of my belief.

Surveyed By: **Fred B. Kerr Jr.**
Date of Survey: **6/10/1975**
Certificate Number: **3950**

Submit new plat ~

6

BLM CONDITIONS OF APPROVAL

CASING REPAIR, WORKOVER AND RECOMPLETION OPERATIONS:

- 1. If casing repair operations are needed, obtain prior approval from this office before commencing repairs.**
- 2. A properly functioning BOP and related equipment must be installed prior to commencing casing repair, workover and/or recompletion operations.**
- 3. If this well is in a Seasonal Closure Area, adhere to closure stipulations.**

SURFACE USE OPERATIONS:

The following Stipulations will apply to this well unless a particular Surface Managing Agency or private surface owner has supplied to BLM and operator a contradictory environmental stipulation. The failure of operator to comply with these requirements may result in assessments or penalties pursuant to 43 CFR 3163.1 or 3163.2. A copy of these conditions of approval shall be present on location during construction, drilling and reclamation activity.

An agreement between operator and fee landowner will take precedence over BLM surface stipulations unless (in reference to 43 CFR Part 3160) 1) BLM determines that operator's actions will affect adjacent Federal or Indian surface, or 2) operator does not maintain well area and lease premises in a workmanlike manner with due regard for safety, conservation and appearance, or 3) no such agreement exists, or 4) in the event of well abandonment, minimal Federal restoration requirements will be required.

STANDARD STIPULATIONS: All surface areas disturbed during work-over activities and not in use for production activities will be reseeded. This should occur in the first 90 days after completion of work-over activities.

SPECIAL STIPULATIONS:

- 1. Pits will be fenced during work-over operation.**
- 2. All disturbance will be kept on existing pad.**
- 3. All pits will be pulled and closed immediately upon completion of the work-over activities.**
- 4. Pits will be lined with an impervious material at least 12 mils thick.**