

UNITED STATES
DEPARTMENT OF THE INTERIOR
BUREAU OF LAND MANAGEMENT

SUNDRY NOTICES AND REPORTS ON WELLS
*Do not use this form for proposals to drill or to re-enter an
Abandoned well. Use Form 3160-3 (APD) for such proposals.*

FORM APPROVED
OMB No 1004-0135
Expires July 31, 2010

5 Lease Serial No

6 If Indian, Allottee or tribe Name

7 If Unit or CA/Agreement, Name and/or No

8 Well Name and No.

9 API Well No.

10 Field and Pool, or Exploratory Area

11 County or Parish, State

NMSF 078096

JAN 23 2009

Bureau of Land Management
Farmington Field Office

Mudge B 1R

30-045-10481

Blanco Mesaverde

San Juan County, New Mexico

SUBMIT IN TRIPLICATE - Other instructions on reverse side

1. Type of Well

☐ Oil Well

☒ Gas Well

☐ Other

2. Name of Operator

BP America Production Company Attn: Cherry Hlava

3a Address

P.O. Box 3092 Houston, TX 77253

3b. Phone No. (include area code)

281-366-4081

4. Location of Well (Footage, Sec., T., R., M., or Survey Description)

1450' FSL & 1190' FWL Sec. 21 T31N, R11W NWSW

12 CHECK APPROPRIATE BOX(ES) TO INDICATE NATURE OR NOTICE, REPORT, OR OTHER DATA

TYPE OF SUBMISSION

☒ Notice of Intent

☐ Subsequent Report

☐ Final Abandonment Notice

TYPE OF ACTION

☐

Acidize

☐

Deepen

☐

Production (Start/Resume)

☐

Water shut-Off

☐

Alter Casing

☐

Fracture Treat

☐

Reclamation

☐

Well Integrity

☐

Casing Repair

☐

New Construction

☐

Recomplete

☐

Other

☐

Change Plans

☒

Plug and Abandon

☐

Water Disposal

☐

Convert to Injection

☐

Plug Back

13 Describe Proposed or Completed Operation (clearly state all pertinent details, including estimated starting date of any proposed work and approximate duration thereof. If the proposal is to deepen directionally or recomplete horizontally, give subsurface locations and measured and true vertical depths of all pertinent markers and zones. Attach the Bond under which the work will be performed or provide the Bond No. on file with BLM/BIA. Required subsequent reports shall be filed within 30 days following completion of the involved operations. If the operation results in a multiple completion or recompletion in a new interval, a Form 3160-4 shall be filed once testing has been completed. Final Abandonment Notices shall be filed only after all requirements, including reclamation, have been completed, and the operator has determined that the site is ready for final inspection.

FEBRUARY COMPLIANCE WELL

BP has reviewed the above mentioned well and finds no further potential in the Mesaverde. BP does not have operator rights in the Fruitland Coal.

We respectfully request permission to plug the entire wellbore of said well.

RCVD JAN 28 '09

OIL CONS. DIV.

DIST. 3

14 I hereby certify that the foregoing is true and correct

Name (Printed/typed)

Cherry Hlava

Title Regulatory Analyst

Signature *Cherry Hlava*

Date 01/22/2009

THIS SPACE FOR FEDERAL OR STATE OFFICE USE

Approved by

Original Signed: Stephen Mason

Title

Date

JAN 27 2009

Conditions of approval, if any, are attached. Approval of this notice does not warrant or Certify that the applicant holds legal or equitable title to those rights in the subject lease which would entitle the applicant to conduct operations thereon.

Office

Title 18 U.S.C. Section 1001 and Title 43 U.S.C. Section 1212, make it a crime for any person knowingly and willfully to make to any department or agency of the United States any false, fictitious or fraudulent statements or representations as to any matter within its jurisdiction

NMOCD

Well Name: Mudge B 1R - MV
Date: January 13, 2009
Location: T31N-R11W-Sec21
County: San Juan
State: New Mexico
Horizon: MV
H2S: no recent readings (shut in well!)
Engr: Anne Hansford
Ph (281) 366-8619
Cell: (713) 540-3386

1. Well is an H2S well that has been shut in
2. TOH with completion.
3. Ensure wellbore is clean of obstructions.
4. Pump cement plugs and remove wellhead. **ALL DEPTHS IN MD**

1. Perform pre-rig site inspection. Check for: size of location, Gas Taps, other wells, other operators, running equipment, wetlands, wash (dikes req.), H2S, barriers needed for equipment, Landowner issues, location of pits (buried lines in pits), Raptor nesting, critical location, check anchors. Check ID wellhead; if earth pit is required have One Call made 48 hours prior to digging.
2. Perform second site visit after lines are marked to ensure all lines clear marked pit locations. Planning and scheduling to ready location for rig.
3. Check and record tubing, casing, and bradenhead pressures. Ensure production casing has double casing valves installed. Double valve all casing strings.
4. Notify BLM and NMOCD 24 hours prior to beginning operations.
Kelly Roberts @ (505) 334-6178, Ext. 16 or Charlie Perrin (ext 11).
BLM Contact (505) 599-8907
5. MIRU workover rig. LOTO all necessary equipment including but not limited to: meter run, automation, separator, and water line.
6. Blow down casing to pit or flowback tank.
7. Rig up water pump. Remove horsehead.
8. Blow down well.
9. Rig down polish rod and trip out of hole

10. RU WL unit. Pressure test lubricator and equipment with shut-in wellhead gas pressure. TIH and set two barriers (profile plugs, CIBPs or G-packoffs) for isolation of tubing string and to comply with DWOP double barriers.
11. Check all casing strings to ensure no pressure exist on any annulus. **The operations of removal of wellhead and installation of BOP's will be performed under a dispensation for one (1) barrier on the backside.**
12. Nipple down tree. NU BOPs and diversion spool with 3" outlets and 3" pipe to the blow tank.
13. Install stripping rubber, pull tubing hanger and shut pipe rams. Strip tubing hanger out of hole.
14. TOOH and LD 2-3/8" production tubing currently set at 5102'.
→ *Gallop plug from 6131' - 6031'*
15. RIH with workstring and set CIBP @ 4074'. Load well with fluid and pressure test casing. If casing does not pressure test, contact engineer for squeeze.
16. Pump and displace 500' plug on top of CIBP (+/- 4074'). POOH. WOC. This should place cement over the Mesaverde/Chacra formation. *4074' - 3156'*
17. RIH and perf 4-1/2" casing at 2750'. POOH. Attempt to establish circulation from between 4-1/2" and 7-5/8" casing if possible. RIH and set EZSV at 2700'. POOH. RIH with workstring and stab into EZSV @ 2700' and pump and displace 100' plug in 4-1/2" x 7-5/8" annulus. Pull out of EZSV and pump and displace 100' cement plug on top of EZSV. This should put cement across the 7-5/8" shoe.
2557'
18. RIH and perf 4-1/2" casing at ~~2500'~~ 2557'. POOH. Attempt to establish circulation from between the 4-1/2" and 7-5/8" if possible. RIH and set EZSV at 2450'. POOH with setting tool. RIH with workstring and stab into EZSV @ 2450' and pump and displace 510' plug in 4-1/2" x 7-5/8" annulus. Pull out EZSV and pump and displace 510' cement plug on top of EZSV. This should place cement across the PC and FT formations.
224'
19. RIH and perf 4-1/2" casing at ~~1035'~~ 1035'. POOH. Attempt to establish circulation from between the 4-1/2" and 7-5/8" if possible. RIH and set EZSV at ~~985'~~ 985'. POOH. RIH with workstring and stab into EZSV @ 985' and pump and displace 235' plug in 4-1/2" x 7-5/8" annulus. Pull out of EZSV and pump and displace 235' cement plug on top of EZSV. This should place cement across the Ojo Alamo and Kirtland Formation.
20. RIH and perf 4-1/2" casing at 367'. Establish circulation from 367' to surface through 4-1/2" casing x 7-5/8" casing annulus. Also, establish circulation between 7-5/8" and 10-3/4" casing annulus to surface. Pump and displace a 367' plug from 367' to surface both inside and outside of the 4-1/2" casing and in 7-5/8" and 10-3/4" annulus. This should put cement across surface casing shoe all the way to surface and in all annuli from 367' to surface.
21. Perform ground disturbance and hot work permits. Cut off wellhead.

22. If cement cannot be seen on all annulus and casing strings remedial cementing will be required from surface.
23. Install 4' well marker and identification plate per NMOCD requirements.
24. RD and release all equipment. Remove all LOTO equipment.
25. Ensure all reports are loaded into DIMS. Print out summary of work and place in Wellfile. Notify Sherri Bradshaw and Cherry Hlava of completed P&A.

Mudge B #1R

T31N, R11W, Sec 21

API # 30-045-10481

GL 5931'

HISTORY

06/1961 Spudded well
 06/1961 Completed DK
 06/1961 SITP = 1852 psi
 11/1994 Recompleted PNLK
 11/1994 SITP = 1228 psi
 07/2004 Payadd CLFH
 01/2006 Well servicing - pump change

MESAVERDE

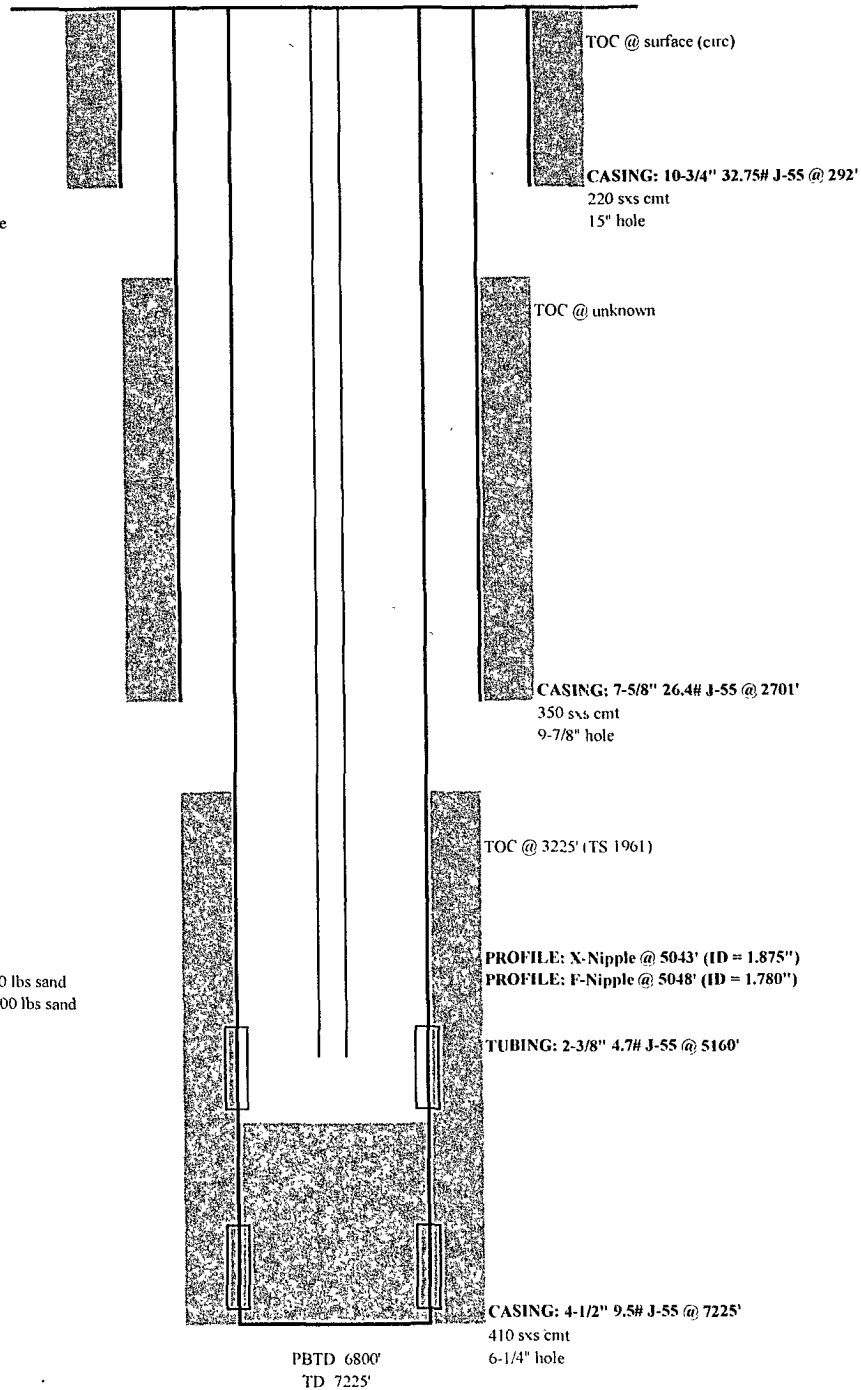
CLFH 4124' - 4224', frac'd w/ 90,000 lbs sand
 PNLK 4773' - 5054', frac'd w/ 149,600 lbs sand

DAKOTA

6900' - 7065'
 70,000 lbs sand
 P.A'd with 50 sxs

NOTES

Ojo Alamo 812'
 Kurland 937'
 Ft 1991'
 PC 2479'
 Top of Cliffhouse @ 4122'
 Top of Menefee @ 4200'
 Top of Point Lookout @ 4823'
 Top of Gallup @ 6082'
 Top of Dakota @ 6966'



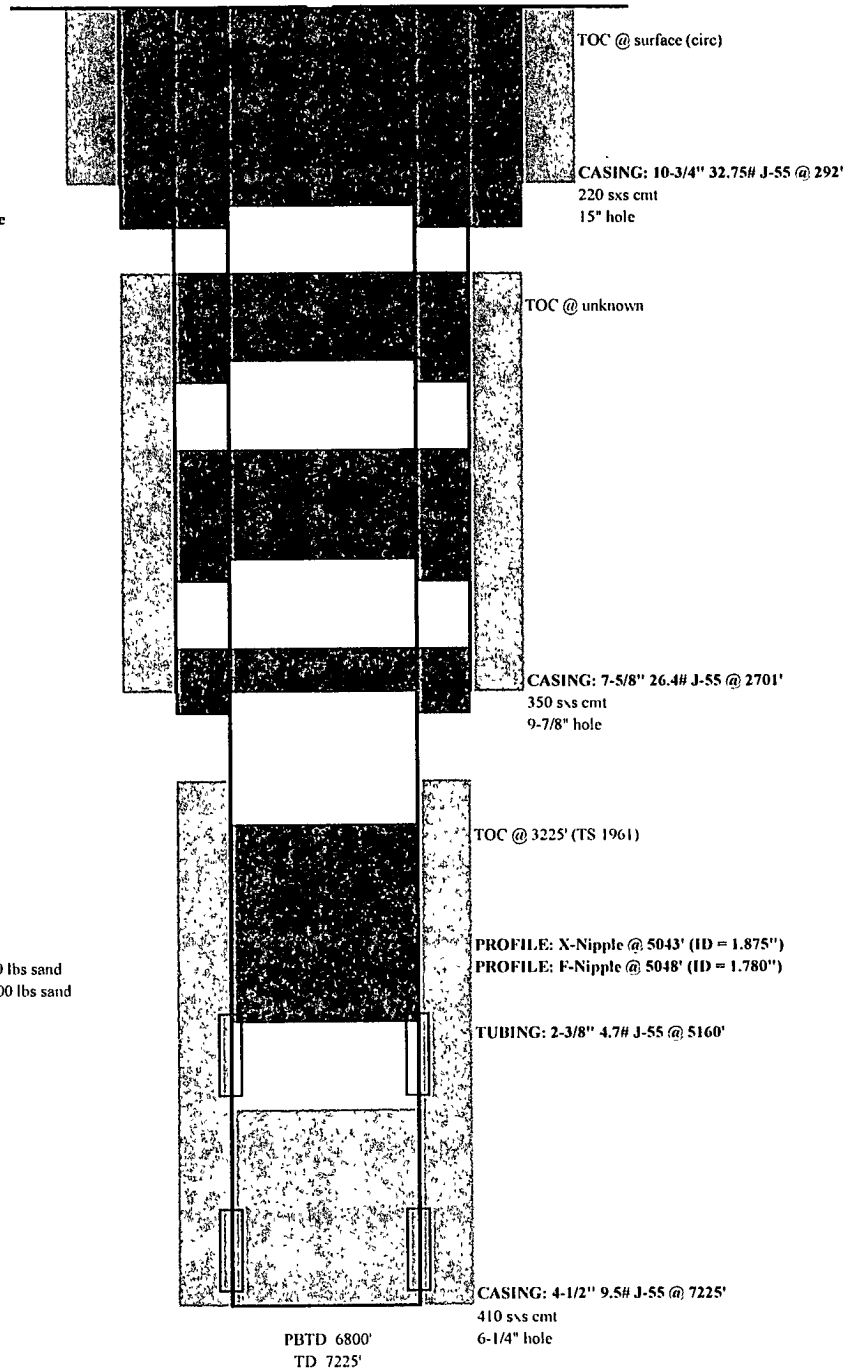
1/13/09 AH

Mudge B #1R
T31N, R11W, Sec 21
API # 30-045-10481

GL 5931'

HISTORY

06/1961 Spudded well
06/1961. Completed DK
06/1961. SITP = 1852 psi
11/1994. Recompleted PNLK
11/1994. SITP = 1228 psi
07/2004 Payadd CLFH
01/2006 Well servicing - pump change



MESAVERDE

CLFH 4124' - 4224', frac'd w/ 90,000 lbs sand
PNLK 4773' - 5054', frac'd w/ 149,600 lbs sand

DAKOTA

6900' - 7065'
70,000 lbs sand
PNA'd with 50 sxs

NOTES

Ojo Alamo 812'
Kirtland 937'
Ft 1991'
PC 2479'
Top of Cliffhouse @ 4122'
Top of Menefee @ 4200'
Top of Point Lookout @ 4823'
Top of Gallup @ 6082'
Top of Dakota @ 6966'

1/13/09 AH

**UNITED STATES DEPARTMENT OF THE INTERIOR
BUREAU OF LAND MANAGEMENT
FARMINGTON DISTRICT OFFICE
1235 LA PLATA HIGHWAY
FARMINGTON, NEW MEXICO 87401**

Attachment to notice of
Intention to Abandon:

Re: Permanent Abandonment
Well: 1R Mudge B

CONDITIONS OF APPROVAL

1. Plugging operations authorized are subject to the attached "General Requirements for Permanent Abandonment of Wells on Federal and Indian Lease."

2. Farmington Office is to be notified at least 24 hours before the plugging operations commence (505) 599-8907.

3. The following modifications to your plugging program are to be made:

a) Place a cement plug from 6131' – 6031' to cover the Gallup top @ 6081'.

b) Bring the top of the Mesaverde/Chacra plug to 3136'.

b') Or place the Mesaverde plug from 4074' - 3874' and the Chacra plug from 3236' – 3136'.

c) Place the Pictured Cliffs/Fruitland plug from 2557' - 2097' inside and outside the 4 ½" casing.

d) Place the Kirtland/Ojo Alamo plug from 994' – 844' inside and outside the 4 ½" casing and if no cement is behind the 7" casing.

e) Since the well has a history of H₂S, monitoring equipment and personal must be on location during plugging operations.

You are also required to place cement excesses per 4.2 and 4.4 of the attached General Requirements.

Office Hours: 7:45 a.m. to 4:30 p.m.