

UNITED STATES  
DEPARTMENT OF THE INTERIOR  
BUREAU OF LAND MANAGEMENT

2001 NOV 13 PM 3:17

APPLICATION FOR PERMIT TO DRILL, DEEPEN, OR PLUG BACK

1a. Type of Work 070 Farm DRILL	5. Lease Number SF-077107A Unit Reporting Number	
1b. Type of Well GAS	6. If Indian, All. or Tribe	
2. Operator <b>BURLINGTON RESOURCES</b> Oil & Gas Company	7. Unit Agreement Name	
3. Address & Phone No. of Operator PO Box 4289, Farmington, NM 87499 (505) 326-9700	8. Farm or Lease Name Hancock B Well Number 8R	
4. Location of Well 775' FNL, 1495' FWL  Latitude 36° 38.3, Longitude 107° 06' 15.0	9. Field, Pool, Wildcat Basin Fruitland Coal/ Aztec Pictured Cliffs 11. Sec., Twn, Rge, Mer. (NMPM) C Sec. 27, T-28-N, R-9-W API # 30-045-30929	
14. Distance in Miles from Nearest Town 18.1 miles from Blanco	12. County San Juan	13. State NM
15. Distance from Proposed Location to Nearest Property or Lease Line 775'		
16. Acres in Lease	17. Acres Assigned to Well FC - 320 W/2 PC - 160 NW	
18. Distance from Proposed Location to Nearest Well, Drig, Compl, or Applied for on this Lease 940'		
19. Proposed Depth 3317'	20. Rotary or Cable Tools Rotary	
21. Elevations (DF, FT, GR, Etc.) 6907' GR	22. Approx. Date Work will Start	
23. Proposed Casing and Cementing Program See Operations Plan attached	DRILLING OPERATIONS AUTHORIZED ARE SUBJECT TO COMPLIANCE WITH ATTACHED "GENERAL REQUIREMENTS"	
24. Authorized by: <u><i>David J. Markiewicz</i></u> Regulatory/Compliance Supervisor	<u>10-31-01</u> Date	

PERMIT NO. \_\_\_\_\_ APPROVAL DATE \_\_\_\_\_  
APPROVED BY /s/ David J. Markiewicz TITLE \_\_\_\_\_  
DATE NOV 25 2003

Archaeological Report to be submitted

Threatened and Endangered Species Report to be submitted

NOTE: This format is issued in lieu of U.S. BLM Form 3160-3

Title 18 U.S.C. Section 1001, makes it a crime for any person knowingly and willfully to make to any department or agency of the United States any false, fictitious or fraudulent statements or presentations as to any matter within its jurisdiction.

NMOCU

DISTRICT I  
1625 N. French Dr., Hobbs, N.M. 88240

DISTRICT II  
611 South First, Artesia, N.M. 88210

DISTRICT III  
1000 Rio Brazos Rd., Aztec, N.M. 87410

DISTRICT IV  
2040 South Pacheco, Santa Fe, NM 87505

State of New Mexico  
Energy, Minerals & Natural Resources Department

Form C-102  
Revised August 15, 2000

Submit to Appropriate District Office  
State Lease - 4 Copies  
Fee Lease - 3 Copies

OIL CONSERVATION DIVISION

2040 South Pacheco  
Santa Fe, NM 87505

☐ AMENDED REPORT

WELL LOCATION AND ACREAGE DEDICATION PLAT

<sup>1</sup> API Number 30-045-30929	<sup>2</sup> Pool Code 71280/71629	<sup>3</sup> Pool Name Aztec Pictured Cliffs/Basin Fruitland Coal
<sup>4</sup> Property Code 7078	<sup>5</sup> Property Name HANCOCK B	<sup>6</sup> Well Number 8R
<sup>7</sup> GRID No. 14538	<sup>8</sup> Operator Name BURLINGTON RESOURCES OIL & GAS, INC.	<sup>9</sup> Elevation 6907'

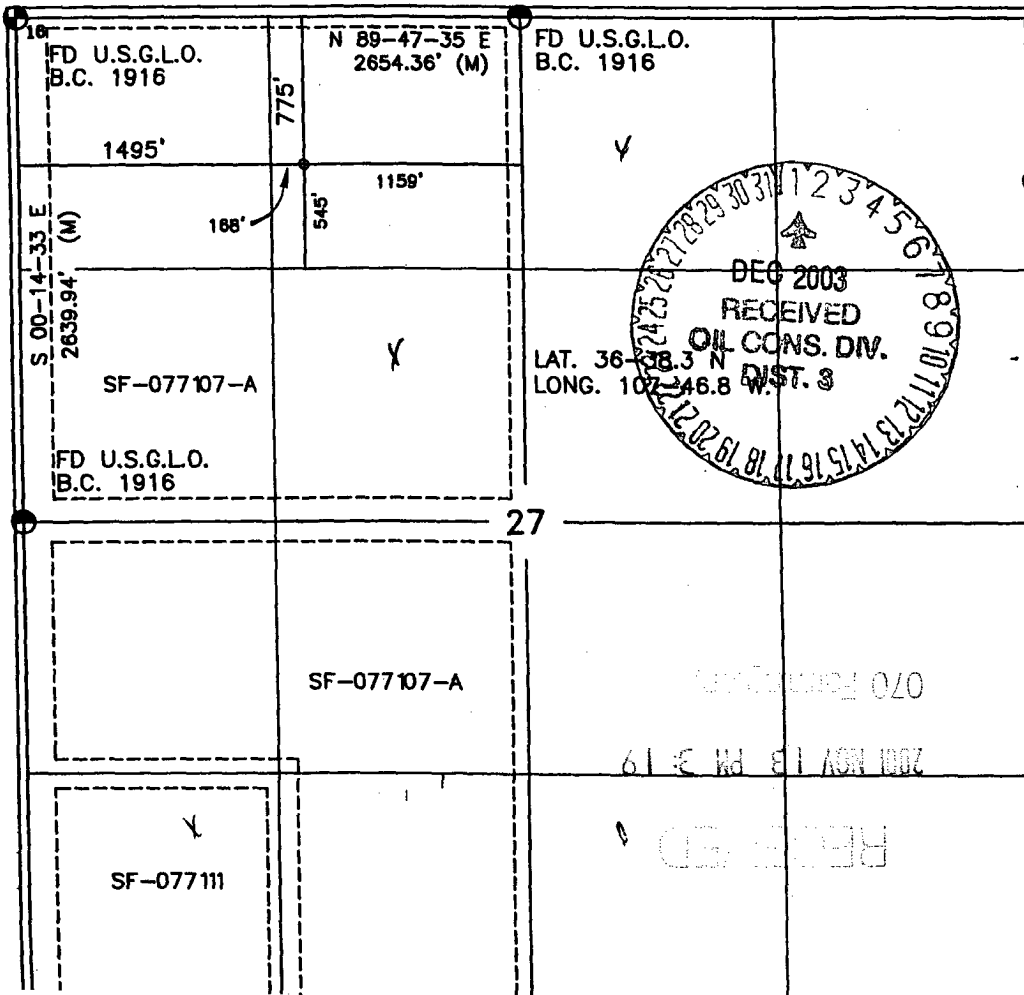
<sup>10</sup> Surface Location

UL or lot no.	Section	Township	Range	Lot Idn	Feet from the	North/South line	Feet from the	East/West line	County
C	27	28-N	9-W		775	NORTH	1495	WEST	SAN JUAN

<sup>11</sup> Bottom Hole Location If Different From Surface

UL or lot no.	Section	Township	Range	Lot Idn	Feet from the	North/South line	Feet from the	East/West line	County
<sup>12</sup> Dedicated Acres FC 320 W/2 PC 160 NW					<sup>13</sup> Joint or Infill		<sup>14</sup> Consolidation Code		<sup>15</sup> Order No.

NO ALLOWABLE WILL BE ASSIGNED TO THIS COMPLETION UNTIL ALL INTERESTS HAVE BEEN CONSOLIDATED  
OR A NON-STANDARD UNIT HAS BEEN APPROVED BY THE DIVISION



17 OPERATOR CERTIFICATION

I hereby certify that the information contained herein is true and complete to the best of my knowledge and belief.

*Peggy Cole*  
Signature

Peggy Cole  
Printed Name

Regulatory Supervisor  
Title

10/31/01  
Date

18 SURVEYOR CERTIFICATION

I hereby certify that the well location shown on this plat was plotted from field notes of actual surveys made by me or under my supervision, and that the same is true and correct to the best of my belief.

6-6-01  
Date of Survey  
Signature and Seal of Professional Surveyor  
8894  
Certificate Number

UNITED STATES  
DEPARTMENT OF THE INTERIOR  
BUREAU OF LAND MANAGEMENT

## Sundry Notices and Reports on Wells

1. Type of Well  
GAS

2. Name of Operator

**BURLINGTON  
RESOURCES**

OIL & GAS COMPANY

3. Address & Phone No. of Operator

PO Box 4289, Farmington, NM 87499 (505) 350-9700

4. Location of Well, Footage, Sec., T, R, M

775' FNL, 1495' FWL, Sec. 27, T-28-N, R-9-W, NMPM

5. Lease Number  
SF-077107A

6. If Indian, All. or  
Tribe Name

7. Unit Agreement Name

8. Well Name & Number  
Hancock B #8R

9. API Well No.

30-045- 30929

10. Field and Pool  
Basin Fruitland Coal/  
Aztec Pictured Cliffs

11. County and State  
San Juan Co, NM

12. CHECK APPROPRIATE BOX TO INDICATE NATURE OF NOTICE, REPORT, OTHER DATA

Type of Submission

☒ Notice of Intent  
☐ Subsequent Report  
☐ Final Abandonment

Type of Action

☐ Abandonment ☒ Change of Plans  
☐ Recompletion ☐ New Construction  
☐ Plugging Back ☐ Non-Routine Fracturing  
☐ Casing Repair ☐ Water Shut off  
☐ Altering Casing ☐ Conversion to Injection  
☒ Other -

13. Describe Proposed or Completed Operations

After reviewing the submitted formation tops for the subject well, please change them to:

Ojo Alamo	2150'
Kirtland	2259'
Fruitland	2782'
Base of Basal Coal	3091'
Pictured Cliffs	3117'

Total depth for the well will stay the same @ 3317'.

Open hole logs will be run as follows:

Platform Express - TD to surface  
Mud log - TD to 2259'

14. I hereby certify that the foregoing is true and correct.

Signed David J. Markiewicz Title Regulatory Supervisor Date 2/25/02  
no

(This space for Federal office use)

APPROVED BY David J. Markiewicz Title \_\_\_\_\_ Date NOV 25 2003

CONDITION OF APPROVAL, if any:

## OPERATIONS PLAN

**Well Name:** Hancock B #8R  
**Location:** 775' FNL, 1495' FWL, Section 27, T-28-N, R-9-W  
San Juan County, New Mexico  
Latitude 36° 38.3, Longitude 107° 46.8  
**Formation:** Basin Fruitland Coal/Aztec Pictured Cliffs  
**Elevation:** 6907' GL

<b>Formation:</b>	<b>Top</b>	<b>Bottom</b>	<b>Contents</b>
Surface	San Jose	2150'	
Ojo Alamo	2150'	2259'	aquifer
Kirtland	2259'	2654'	gas
Fruitland	2654'	3117'	gas
Pictured Cliffs	3117'		gas
Total Depth	3317'		

**Logging Program:**

Cased hole - Surface to TD - CBL-CCL-GR

**Coring Program:** None

**Mud Program:**

<u>Interval</u>	<u>Type</u>	<u>Weight</u>	<u>Vis.</u>	<u>Fluid Loss</u>
0- 200'	Spud	8.4-9.0	40-50	no control
200-3317'	FW	8.4-9.0	32-45	no control

**Casing Program (as listed, equivalent, or better):**

<u>Hole Size</u>	<u>Depth Interval</u>	<u>Csg. Size</u>	<u>Wt.</u>	<u>Grade</u>
8 3/4"	0 - 200'	7"	20.0#	J-55
6 1/4"	0 - 3317'	4 1/2"	10.5#	K-55

**Float Equipment:** 7" surface casing - saw tooth guide shoe.  
Centralizers will be run in accordance with Onshore Order #2.

4 1/2" production casing - float shoe on bottom. Three centralizers run every other joint above shoe. Seven centralizers run every 3rd joint to the base of the Ojo Alamo @ 2259'. Two turbolizing type centralizers - one below and one into the base of the Ojo Alamo @ 2259'. Standard centralizers thereafter every fourth joint up to the base of the surface pipe.

**Wellhead Equipment:** 7" x 4 1/2" x 2 3/8" 2000 psi screw on independent wellhead.

**Cementing:**

7" surface casing - cement with 76 sx Class B cement w/3% calcium chloride and 0.25 pps Flocele (90 cu.ft. of slurry, circulate cement to surface). WOC 8 hrs. Test casing to 600 psi for 30 minutes.

4 1/2" production casing - Lead w/261 sx Premium Lite cement w/3% calcium chloride, 1/4 pps Flocele, 5 pps LCM-1, 0.4% FL-52, 0.4% SMS. Tail w/90 sx Type III cement w/1% calcium chloride, 1/4 pps Flocele, and 0.2% FL-52 (681 cu.ft. of slurry, 100% excess to circulate to surface).

Note: If open hole logs are run, cement volumes will be based on 25% excess over caliper volumes.

**BOP and tests:**

Surface to TD - 11" 2000 psi (minimum double gate BOP stack (Reference Figure #1). Prior to drilling out surface casing, test rams to 600 psi/30 min.

Completion - 6" 2000 psi (minimum) double gate BOP stack (Reference Figure #2). Prior to completion operations, test rams and casing to 2000 psi/15 min.

From surface to TD - choke manifold (Reference Figure #3).

Pipe rams will be actuated to least once each day and blind rams actuated once each trip to test proper functioning. An upper kelly cock valve with handle and drill string safety valves to fit each drill string will be maintained and available on the rig floor.

**BOP and tests (if a coiled tubing drilling rig is utilized):**

Surface to TD: 7 1/16" 2000 psi (minimum) Torus annular BOP stack (Reference Figure #1B). Prior to drilling out surface casing, test annular BOP to 600 psi/30 minutes.

Completion: 7 1/16" 2000 psi (minimum) double gate BOP stack (Reference Figure #2). Prior to completion operations, test blind rams and casing to 1500 psi/30 minutes; all pipe rams and casing to 1500 psi/30 minutes each.

From surface to TD: choke manifold (Reference Figure #3).

The annular BOP will be actuated to close on drill pipe (coiled tubing) at least once each day and to close on open hole once each trip to test proper functioning.

**Additional information:**

- \* The Fruitland Coal and Pictured Cliffs formation will be completed and commingled.
- \* Anticipated pore pressure for the Pictured Cliffs is 500 psi.
- \* This gas is dedicated.
- \* The west half of Section 27 is dedicated to the Fruitland Coal and the northwest quarter of Section 27 is dedicated to the Pictured Cliffs.

Erin J. Siles  
Drilling Engineer

11/5/01  
Date