

UNITED STATES  
DEPARTMENT OF THE INTERIOR  
BUREAU OF LAND MANAGEMENT

FORM APPROVED  
OMB No. 1004-0136  
Expires November 30, 2000

APPLICATION FOR PERMIT TO DRILL OR REENTER

1a. Type of Work: <input checked="" type="checkbox"/> DRILL <input type="checkbox"/> REENTER		5. Lease Serial No. SF-078604
1b. Type of Well: <input type="checkbox"/> Oil Well <input checked="" type="checkbox"/> Gas Well <input type="checkbox"/> Other <input checked="" type="checkbox"/> Single Zone <input type="checkbox"/> Multiple Zone		6. If Indian, Allottee or Tribe Name
2. Name of Operator ENERGEN RESOURCES CORPORATION Contact: VICKI DONAGHEY E-Mail: vdonaghe@energen.com		7. If Unit or CA Agreement, Name and No. 21397
3a. Address 2198 BLOOMFIELD HIGHWAY FARMINGTON, NM 87401	3b. Phone No. (include area code) Ph: 505.325.6800 Ext: 238 Fx: 505.326.6112	8. Lease Name and Well No. SCOTT 13R
4. Location of Well (Report location clearly and in accordance with any State requirements.) At surface SWNW 1515FNL 1135FWL At proposed prod. zone		9. API Well No. 30 045 31282
14. Distance in miles and direction from nearest town or post office* 9 MILES NORTHEAST OF AZTEC, NM		10. Field and Pool, or Exploratory BLANCO PICTURED CLIFFS
15. Distance from proposed location to nearest property or lease line, ft. (Also to nearest drig. unit line, if any) 1135'	16. No. of Acres in Lease 160.15	11. Sec., T., R., M., or Blk. and Survey or Area Sec 3 T31N R10W Mer NMP
18. Distance from proposed location to nearest well, drilling, completed, applied for, on this lease, ft. 50'	19. Proposed Depth 2990 MD	12. County or Parish SAN JUAN
21. Elevations (Show whether DF, KB, RT, GL, etc.) 5907 GL	22. Approximate date work will start 11/01/2003	13. State NM
23. Estimated duration 5 DAYS		17. Spacing Unit dedicated to this well 160.15 / 55.85 NW/4

24. Attachments

The following, completed in accordance with the requirements of Onshore Oil and Gas Order No. 1, shall be attached to this form:

1. Well plat certified by a registered surveyor.
2. A Drilling Plan.
3. A Surface Use Plan (if the location is on National Forest System Lands, the SUPO shall be filed with the appropriate Forest Service Office).
4. Bond to cover the operations unless covered by an existing bond on file (see item 20 above).
5. Operator certification
6. Such other site specific information and/or plans as may be required by the authorized officer.

25. Signature (Electronic Submission)	Name (Printed/Typed) DOUG THOMAS Ph: 505.325.6800 Ext: 226	Date 12/11/2002
Title DRILLING & COMPLETION FOREMAN		
Approved by (Signature) <i>[Signature]</i>	Name (Printed/Typed)	Date NOV 20 2003
Title	Office	

Application approval does not warrant or certify the applicant holds legal or equitable title to those rights in the subject lease which would entitle the applicant to conduct operations thereon.  
Conditions of approval, if any, are attached.

Title 18 U.S.C. Section 1001 and Title 43 U.S.C. Section 1212, make it a crime for any person knowingly and willfully to make to any department or agency of the United States any false, fictitious or fraudulent statements or representations as to any matter within its jurisdiction.

Additional Operator Remarks (see next page)

Electronic Submission #16842 verified by the BLM Well Information System  
For ENERGEN RESOURCES CORPORATION, sent to the Farmington

DRILLING OPERATIONS AUTHORIZED ARE  
SUBJECT TO COMPLIANCE WITH ATTACHED  
"GENERAL REQUIREMENTS".

This action is subject to technical and  
procedural review pursuant to 43 CFR 3165.3  
and appeal pursuant to 43 CFR 3165.4

NMOC

HOLD C104 FOR Change in Status to Scott #13

\*\* ORIGINAL \*\* ORIGINAL \*\* ORIGINAL \*\* ORIGINAL \*\* ORIGINAL \*\* ORIGINAL \*\* ORIGINAL \*\*

District I  
PO Box 1980, Hobbs, NM 88241-1980

District II  
PO Drawer 00, Artesia, NM 88211-0719

District III  
1000 Rio Brazos Rd., Aztec, NM 87410

District IV  
PO Box 2088, Santa Fe, NM 87504-2088

State of New Mexico  
Energy, Minerals & Natural Resources Department

OIL CONSERVATION DIVISION  
PO Box 2088  
Santa Fe, NM 87504-2088

Form C-102  
Revised February 21, 1994  
Instructions on back  
Submit to Appropriate District Office  
State Lease - 4 Copies  
Fee Lease - 3 Copies

☐ AMENDED REPORT

WELL LOCATION AND ACREAGE DEDICATION PLAT

*API Number 30045-31282		*Pool Code 72359	*Pool Name BLANCO PICTURED CLIFFS
*Property Code 21397	*Property Name SCOTT		*Well Number 13R
*GRID No. 162928	*Operator Name ENERGEN RESOURCES CORPORATION		*Elevation 5907'

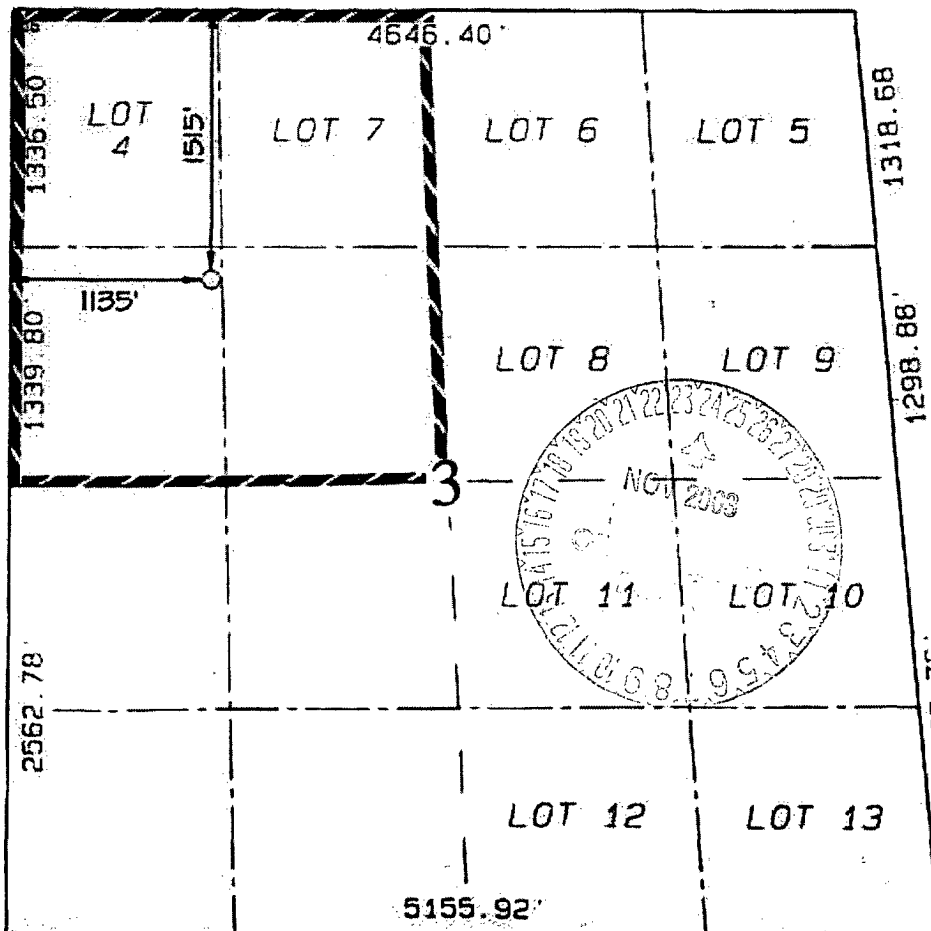
<sup>10</sup> Surface Location

UL or lot no.	Section	Township	Range	Lot 34	Feet from line	North/South line	Feet from line	East/West line	County
E	3	31N	10W		1515	NORTH	1135	WEST	SAN JUAN

<sup>11</sup> Bottom Hole Location If Different From Surface

UL or lot no.	Section	Township	Range	Lot 34	Feet from line	North/South line	Feet from line	East/West line	County
*Dedicated Acres 160.15					*Joint or Infill		*Consolidation Code		*Order No.

NO ALLOWABLE WILL BE ASSIGNED TO THIS COMPLETION UNTIL ALL INTERESTS HAVE BEEN CONSOLIDATED  
OR A NON-STANDARD UNIT HAS BEEN APPROVED BY THE DIVISION



<sup>12</sup> OPERATOR CERTIFICATION

I hereby certify that the information  
contained herein is true and complete  
to the best of my knowledge and belief

*Don Graham*  
Signature

Don Graham

Printed Name

Production Superintendent

Title

9-20-01

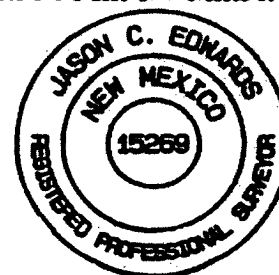
Date

<sup>13</sup> SURVEYOR CERTIFICATION

I hereby certify that the well location  
shown on this plat was plotted from field  
notes of actual surveys made by me or under  
my supervision, and that the same is true  
and correct to the best of my belief.

Date of Survey: AUGUST 27, 2001

Signature and Seal of Professional Surveyor



*Jason C. Edwards*  
Certificate Number 15269

## OPERATIONS PLAN

WELL NAME: Scott 13R

LOCATION: 1515'' FNL, 1135' FWL, Section 3, T31N, R10W, San Juan County, NM

FIELD: Blanco Pictured Cliffs

ELEVATION: 5907' GL

### FORMATION TOPS:

Surface	San Jose
Ojo Alamo	957
Kirtland	1162
Fruitland	2617
Pictured Cliffs	2713

Total Depth 2990

### LOGGING PROGRAM:

Open Hole Logs:

Surface to TD: None

Mud Logs: None

Coring: None

Natural Gauges: None

MUD PROGRAM: Fresh water low solids mud from surface to T. D. 9.0-9.2 PPG.

### CASING PROGRAM:

<u>HOLE SIZE</u>	<u>DEPTH</u>	<u>CSG SIZE</u>	<u>WT.</u>	<u>GRADE</u>
12 ¼"	300'	9 5/8"	36#	J-55
7 7/8"	2990'	4- ½"	10.5#	J-55

### TUBING PROGRAM:

2900	.-1/2"	4.7#	J-55
------	--------	------	------

WELLHEAD: 9 5/8" 2000 x 4 ½" Larkin Fig. 92 casing head. 4 ½" 2000 x 2" tubing head.

### BOP SPECIFICATIONS:

An 11" 2000 psi minimum double gate BOP stack (Figure 1) will be used following nipple up of casing head. During air drilling operations, a Shaffer Type 50 or equivalent rotating head will be installed on top of the stack. A 2" nominal, 2000 psi minimum choke manifold will be used. An upper Kelly Cock valve with handle available and drill string valve to fit each drill string will be available on the rig floor during drilling operations.

**CEMENTING:**

9 5/8" surface casing - Cement with 160 sks Class B Cement with 1/4# flocele/sk and 2% calcium chloride (188 cu. ft. of slurry, 100% excess to circulate to surface). WOC 12 hrs. Test casing to 600# for 30 minutes.

Texas Pattern Guide Shoe on bottom

4 1/2" production casing:

Cement with 530 sks 65/35 Class B Poz with 6% gel, 2% calcium chloride, 10% gilsonite, and 1/4# flocele/sk. Tail with 50 sks Class B w/2% calcium chloride, 10% gilsonite and 1/4# flocele/sk. (1022 cu. ft. of slurry, 50% excess to circulate to surface). WOC 12 hrs.

Cement nose guide shoe on bottom with a self-fill insert float valve on top of shoe joint. 8 bow spring centralizers spaced every 3rd joint off bottom. One bow spring centralizer below and eight above stage tool at 3700. Two turbolating centralizers at the base of the Ojo Alamo.

**OTHER INFORMATION:**

- 1) No abnormal temperatures or pressures are anticipated.
- 2) If lost circulation is encountered, sufficient LCM will be added to the mud system to maintain well control.
- 3) This gas is dedicated.
- 4) Anticipated pore pressure for the Fruitland is 700 psi and the Pictured Cliffs is 800 psi.