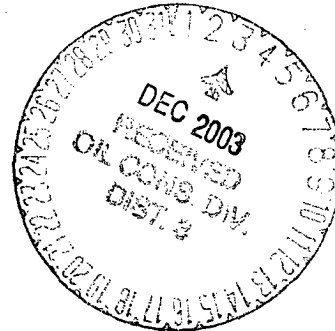


# BURLINGTON RESOURCES

New Mexico Oil Conservation Division  
1000 Rio Brazos Road  
Aztec, New Mexico 87410

Re: Davis #8E  
SENE, Section 11, T-31-N, R-12-W  
30-045-23759  
San Juan County, New Mexico



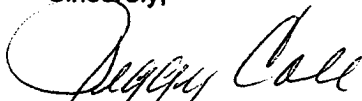
Gentlemen:

The above referenced well is a Mesaverde/Dakota commingle. Attached is a copy of the allocation for the commingling of the subject well completed on September 7, 2001. DHC-204az was issued for this well.

Gas:	Mesa Verde	52%
	Dakota	48%
 Oil:	Mesa Verde	0%
	Dakota	100%

The gas percentages are based upon reserves assigned to each formation founded on production from the respective formations before and after workover operations. Because condensate production did not increase with the addition of the Mesaverde formation, the oil has been allocated solely to the Dakota formation. Please let me know if you have any questions.

Sincerely,

  
Peggy Cole  
Regulatory Supervisor

Xc: NMOCD - Santa Fe  
Bureau of Land Management

## Production Allocation Documentation

### Davis #8E

Production Allocation

Based on Remaining Reserves

Mesaverde Recomplete September 2001

### GAS

	<u>RR</u>	<u>Allocation %</u>
Dakota	808.8	48%

All	<u>1678.5</u>	
-----	---------------	--

Mesaverde	869.7	52%
-----------	-------	-----

### Condensate

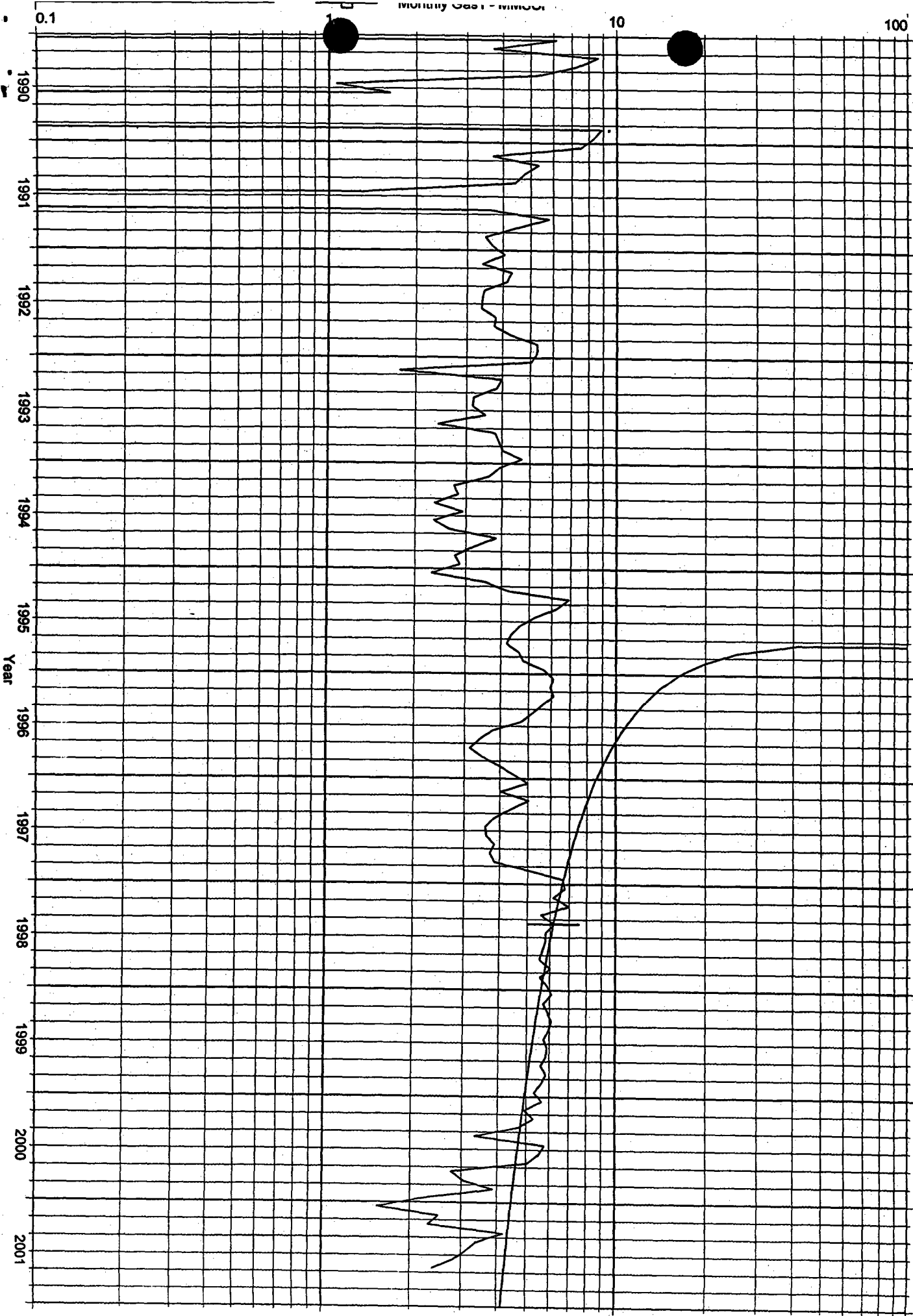
Because condensate did not increase with the addition of the Mesaverde formation, condensate has been allocated solely to the Dakota formation.

Operator: BURLINGTON RESOURCES OG CO LP  
Field: BASIN DAKOTA (PRORATED GAS)

Zone:  
Type: Gas  
Group: Well: 28, 5LW

dk (Rate-Time)  
qt: 6.20925 MMSCF, May, 1998  
qt: 0.456994 MMSCF, Mar, 2042  
dl(Hyp): 14  
RR: 808.787 MMSCF

Production Cums  
Oil: 0 MSTB  
Gas: 1559.43 MMSCF  
Water: 0 MSTB  
Cond: 0 MSTB



DAVID DE ALB (UNAVISUM)

Operator: BURLINGTON RESOURCES OG CO LP  
Field:  
Zone:  
Type: Gas  
Group: Well: 28 SLW

all (Rate-Time)  
qt: 17,045 MMSCF, Dec, 2001  
qt: 0.45686 MMSCF, Dec, 2053  
di(hyp): 40  
RR: 1678.47 MMSCF

Production Cums  
Oil: 0 MSTB  
Gas: 97 MMSCF  
Water: 0 MSTB  
Cond: 0 MSTB

