

**UNITED STATES
DEPARTMENT OF THE INTERIOR
BUREAU OF LAND MANAGEMENT**

RECEIVED

APR 15 2009

Sundry Notices and Reports on Wells

Bureau of Land Management
Farmington Field Office1. Type of Well
GAS5. Lease Number
NM-1119216. If Indian, All. or
Tribe Name

7. Unit Agreement Name

2. Name of Operator

BURLINGTON**RESOURCES OIL & GAS COMPANY LP**

3. Address & Phone No. of Operator

PO Box 4289, Farmington, NM 87499 (505) 326-9700

8. Well Name & Number

Negro Canyon 5

9. API Well No.

30-045-34717

4. Location of Well, Footage, Sec., T, R, M

10. Field and Pool

Basin DK/Blanco MV**Unit L (NWSW) 2350' FSL & 1106' FWL, Sec. 12, T31N, R8W NMPM****Unit G (SWNE) 1875' FNL & 2390' FEL, Sec. 12, T31N, R8W**

11. County and State

San Juan Co., NM

12. CHECK APPROPRIATE BOX TO INDICATE NATURE OF NOTICE, REPORT, OTHER DATA

Type of Submission

☒ Notice of Intent☐ Subsequent Report☐ Final Abandonment

Type of Action

☐ Abandonment☐ Recompletion☐ Plugging☐ Casing Repair☐ Altering Casing☐ Change of Plans☐ New Construction☐ Non-Routine Fracturing☐ Water Shut off☐ Conversion to Injection☒ Other - Move Surface Location**RCVD APR 20 '09****OIL CONS. DIV.****DIST. 3**

13. Describe Proposed or Completed Operations

Burlington Resources wishes to move the surface location of the subject well due to operation restrictions and disturbance constraints. The approved footages were **Unit L (NWSW) 2345' FSL & 1125' FWL, Sec. 12, T31N, 8W** and the Bottomhole of **Unit G (SWNE) 1875' FNL & 2390' FEL, Sec. 12, T31N, R8W**. The new surface location will be **Unit L (NWSW) 2350' FSL & 1106' FEL, Sec 12, T31N, R8W** and the Bottomhole will remain the same. The edge of disturbance did not change. The new plat, pad diagram, cut & fill is attached.

14. I hereby certify that the foregoing is true and correct.

Signed Crystal Tafoya Crystal Tafoya Title Regulatory Technician Date 04/15/2009

(This space for Federal or State Office use)

APPROVED BY [Signature] Title Branch Chief Date 4/15/09

CONDITION OF APPROVAL, if any:

Title 18 U.S.C. Section 1001, makes it a crime for any person knowingly and willfully to make any department or agency of the United States any false, fictitious or fraudulent statements or representations as to any matter within its jurisdiction

NMOC

DISTRICT I
1625 N. French Dr., Hobbs, N.M. 88240

State of New Mexico
Energy, Minerals & Natural Resources Department

Form C-102
Revised October 12, 2005

DISTRICT II
1301 W. Grand Avenue, Artesia, N.M. 88210

DISTRICT III
1000 Rio Brazos Rd., Aztec, N.M. 87410

OIL CONSERVATION DIVISION
1220 South St. Francis Dr.
Santa Fe, NM 87505

Submit to Appropriate District Office
State Lease - 4 Copies
Fee Lease - 3 Copies

DISTRICT IV
1220 S. St. Francis Dr., Santa Fe, NM 87505

☐ AMENDED REPORT

WELL LOCATION AND ACREAGE DEDICATION PLAT

¹ API Number 30-045-34717	² Pool Code 71599/72319	³ Pool Name BASIN DAKOTA/BLANCO MESAVERDE
⁴ Property Code 34287	⁵ Property Name NEGRO CANYON	⁶ Well Number 5
⁷ GRID No. 14538	⁸ Operator Name BURLINGTON RESOURCES OIL & GAS COMPANY LP	⁹ Elevation 6905'

¹⁰ Surface Location

UL or lot no. L	Section 12	Township 31N	Range 8W	Lot Idn	Feet from the 2350'	North/South line SOUTH	Feet from the 1106'	East/West line WEST	County SAN JUAN
--------------------	---------------	-----------------	-------------	---------	------------------------	---------------------------	------------------------	------------------------	--------------------

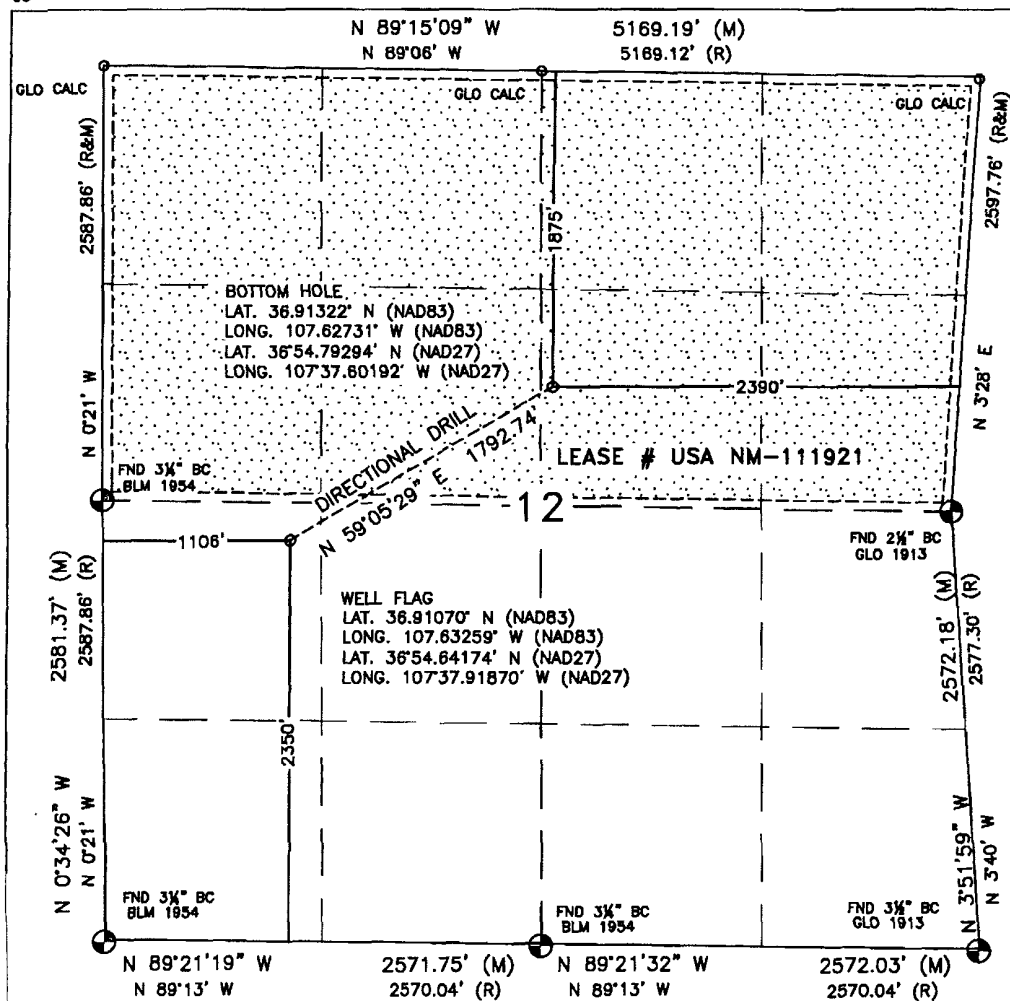
¹¹ Bottom Hole Location If Different From Surface

UL or lot no. G	Section 12	Township 31N	Range 8W	Lot Idn	Feet from the 1875'	North/South line NORTH	Feet from the 2390'	East/West line EAST	County SAN JUAN
--------------------	---------------	-----------------	-------------	---------	------------------------	---------------------------	------------------------	------------------------	--------------------

¹² Dedicated Acres 320.00 Acres - (N/2)	¹³ Joint or Infill	¹⁴ Consolidation Code	¹⁵ Order No.
-------------------------------------------------------	-------------------------------	----------------------------------	-------------------------

NO ALLOWABLE WILL BE ASSIGNED TO THIS COMPLETION UNTIL ALL INTERESTS HAVE BEEN CONSOLIDATED
OR A NON-STANDARD UNIT HAS BEEN APPROVED BY THE DIVISION

16



17 OPERATOR CERTIFICATION

I hereby certify that the information contained herein is true and complete to the best of my knowledge and belief, and that this organization either owns a working interest or unleased mineral interest in the land including the proposed bottom hole location or has a right to drill this well at this location pursuant to a contract with an owner or a compulsory pooling order heretofore entered by the division.

Crystal Tafoya 4/15/2009
Signature Date

Crystal Tafoya 4-15-09

Printed Name

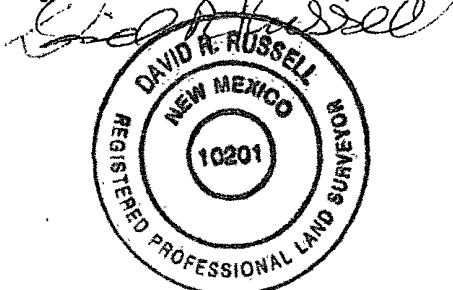
18 SURVEYOR CERTIFICATION

I hereby certify that the well location shown on this plat was plotted from field notes of actual surveys made by me or under my supervision, and that the same is true and correct to the best of my belief.

APRIL 2, 2009

Date of Survey

Signature and Seal of Professional Surveyor:



DAVID RUSSELL

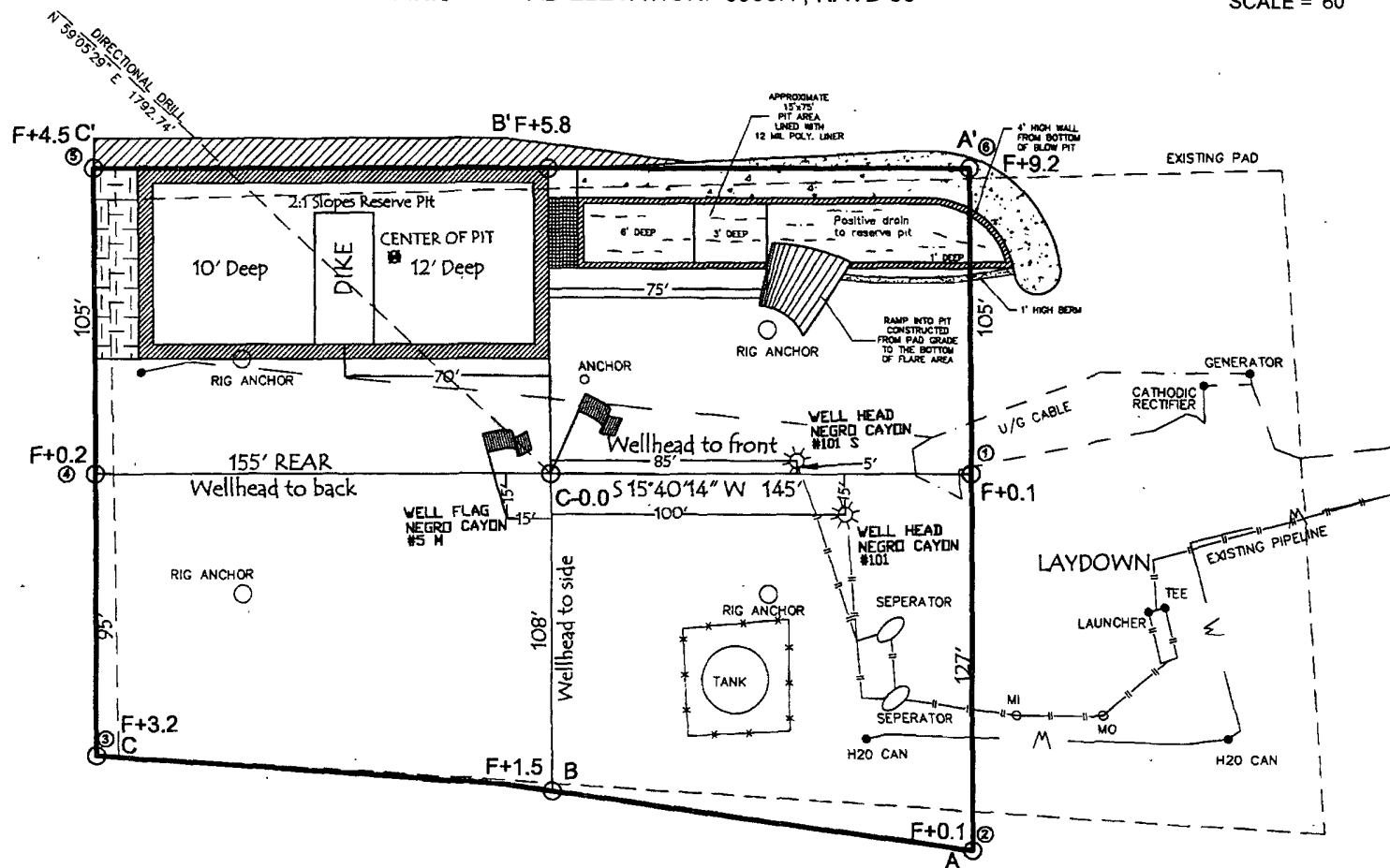
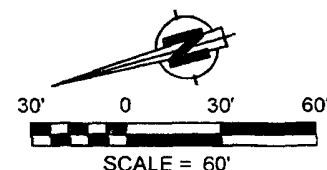
Certificate Number 10201

WELL FLAG

LATITUDE: 36.91070°N
LONGITUDE: 107.63259°W
CENTER OF PIT
LATITUDE: 36.91075°N
LONGITUDE: 107.63263°W
ELEVATION: 6893.1'
DATUM: NAD83 & NAVD88

BURLINGTON RESOURCES OIL & GAS COMPANY LP

NEGRO CANYON #5
2350' FSL & 1106' FWL
LOCATED IN THE NW/4 SW/4 OF SECTION 12,
T31N, R8W, N.M.P.M.,
SAN JUAN COUNTY, NEW MEXICO
GROUND ELEVATION: 6905', NAVD 88
FINISHED PAD ELEVATION: 6905.1', NAVD 88



1.47 ACRES OF DISTURBANCE
SCALE: 1" = 60'
JOB No.: COPC153_REV1
DATE: 04/03/09

NOTE:
RESERVE PIT DIKE: TO BE 8' ABOVE DEEP SIDE (OVERFLOW - 3' WIDE AND 1' ABOVE SHALLOW SIDE).
RUSSELL SURVEYING, INC. IS NOT LIABLE FOR UNDERGROUND UTILITIES OR PIPELINES.
CONTRACTOR SHOULD CALL ONE-CALL FOR LOCATION OF ANY MARKED OR UNMARKED, BURIED PIPELINES OR CABLES ON WELL PAD, IN CONSTRUCTION ZONE AND/OR ACCESS ROAD AT LEAST TWO (2) WORKING DAYS PRIOR TO CONSTRUCTION.

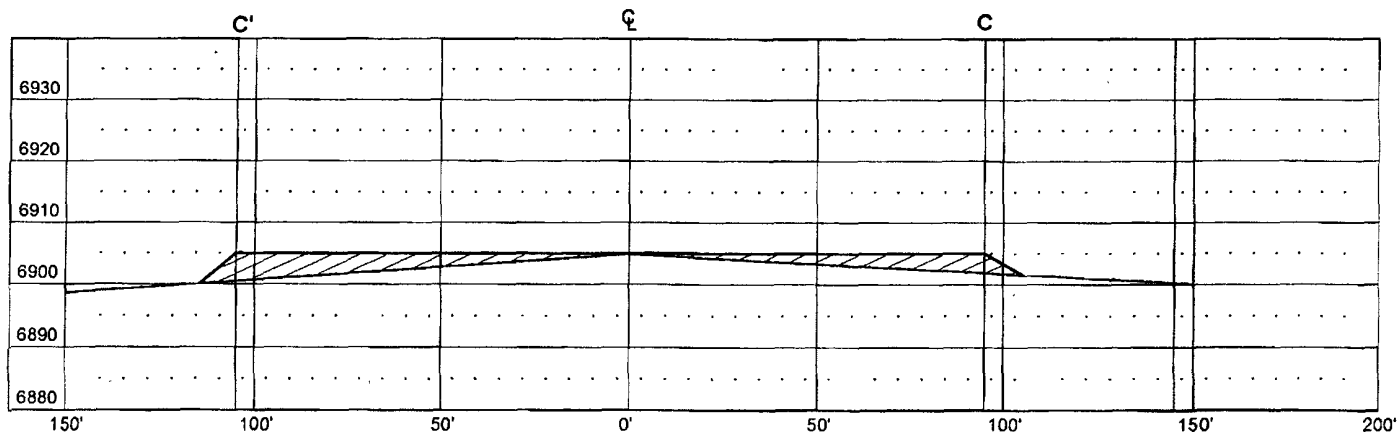
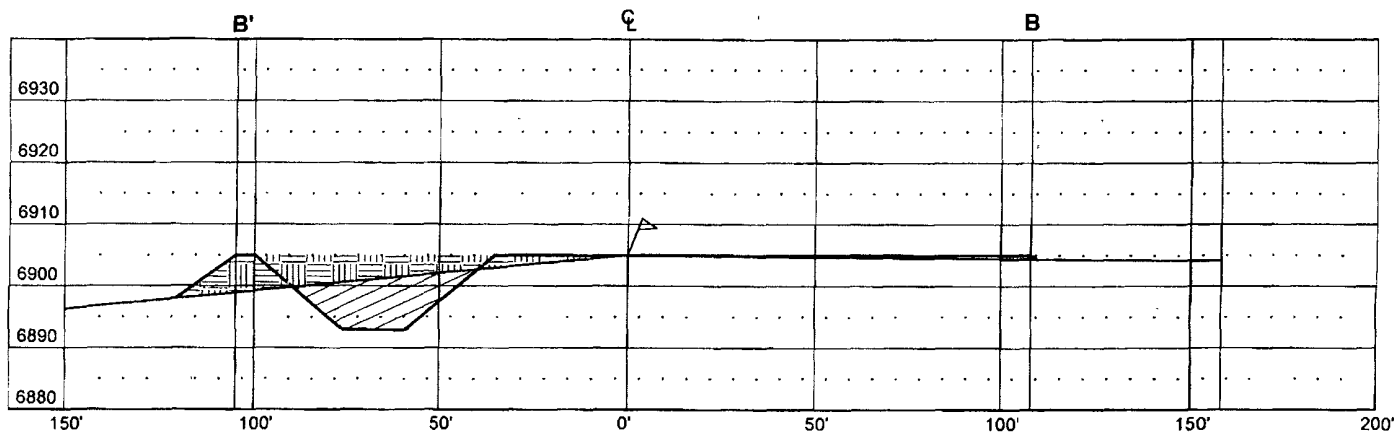
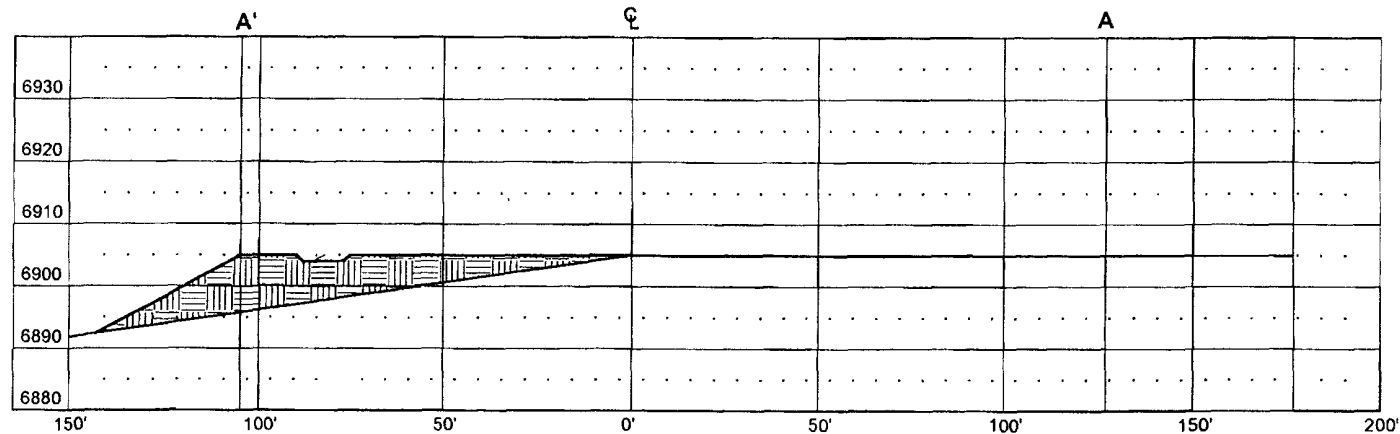


Russell Surveying
1409 W. Aztec Blvd. #2
Aztec, New Mexico 87410
(505) 334-8637

LATITUDE: 36.91070°N
LONGITUDE: 107.63259°W
DATUM: NAD 83

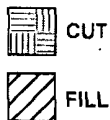
BURLINGTON RESOURCES OIL & GAS COMPANY LP

NEGRO CANYON #5
2350' FSL & 1106' FWL
LOCATED IN THE NW/4 SW/4 OF SECTION 12,
T31N, R8W, N.M.P.M.,
SAN JUAN COUNTY, NEW MEXICO
GROUND ELEVATION: 6905', NAVD 88
FINISHED PAD ELEVATION: 6905.1', NAVD 88



THIS DIAGRAM IS AN ESTIMATE OF DIRT BALANCE AND IS NOT INTENDED TO BE AN EXACT MEASURE OF VOLUME

VERT. SCALE: 1" = 30'
HORZ. SCALE: 1" = 50'
JOB No.: COPC153_REV1
DATE: 04/03/09

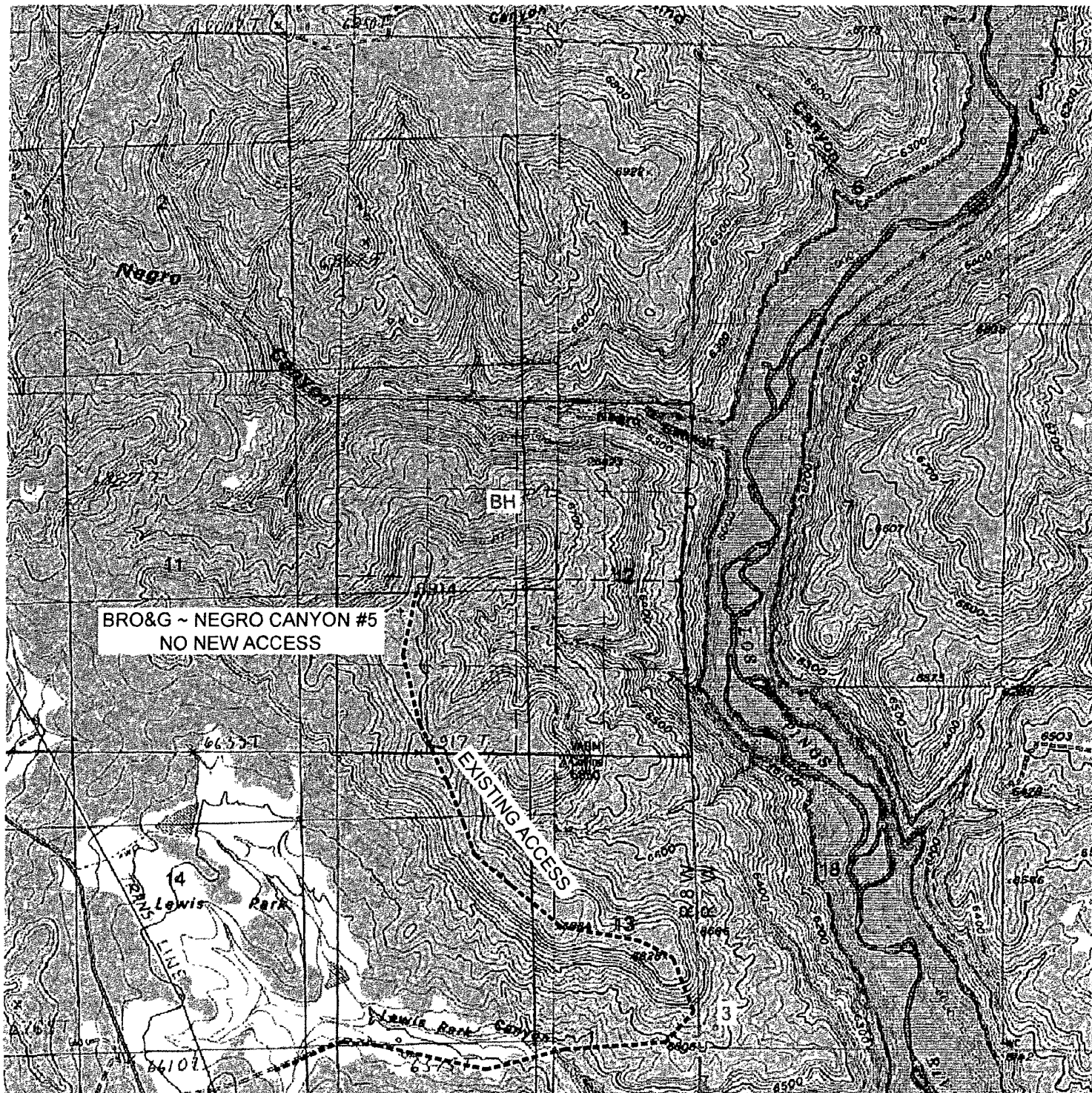


Russell Surveying
1409 W. Aztec Blvd. #2
Aztec, New Mexico 87410
(505) 334-8637

LATITUDE: 36.91070°N
LONGITUDE: 107.63259°W
DATUM: NAD 83

BURLINGTON RESOURCES OIL & GAS COMPANY LP

NEGRO CANYON #5
2350' FSL & 1106' FWL
LOCATED IN THE NW/4 SW/4 OF SECTION 12,
T31N, R8W, N.M.P.M.,
SAN JUAN COUNTY, NEW MEXICO
GROUND ELEVATION: 6905', NAVD 88
NO NEW ACCESS



U.S.G.S. QUAD: ANASTACIO SPRING
SCALE: 1" = 2000' (1:24,000)
JOB No.: COPC153_REV1
DATE: 04/03/09

NEW OR RECONSTRUCTED ROADS MUST MEET
SMA DESIGN STANDARDS
INSTALL CULVERTS AS NEEDED



Russell Surveying
1409 W. Aztec Blvd. #2
Aztec, New Mexico 87410
(505) 334-8637

BURLINGTON RESOURCES OIL & GAS COMPANY LP

NEGRO CANYON #5
2350' FSL & 1106' FWL
LOCATED IN THE NW/4 SW/4 OF SECTION 12,
T31N, R8W, N M.P.M.,
SAN JUAN COUNTY, NEW MEXICO

DIRECTIONS

- 1) FROM HWY 511 AT MP 20.5, GO NORTHEASTERLY 0.7 MILES.
- 2) STAY LEFT AND GO 0.7 MILES TO TOP OF HILL.
- 3) TURN LEFT, GO 1.0 MILES TO LOCATION.

WELL FLAG LOCATED AT LAT. 36.91070°N LONG. 107.63259°W (NAD 83)

