

UNITED STATES
DEPARTMENT OF THE INTERIOR
BUREAU OF LAND MANAGEMENT

RECEIVED

MAY 18 2009

Sundry Notices and Reports on Wells

Bureau of Land Management
Farmington Field Office

1. Type of Well
GAS

5. Lease Number
NMSF-080781

6. If Indian, All. or
Tribe Name

7. Unit Agreement Name

2. Name of Operator

BURLINGTON

RESOURCES OIL & GAS COMPANY LP

3. Address & Phone No. of Operator

P.O. Box 4289, Farmington, NM 87499

8. Well Name & Number
Cain 16E

9. API Well No.

30-045-25740

4. Location of Well, Footage, Sec., T, R, M

Unit 1 (NESE), 1555' FSL & 1210' FEL, Section 30, T29N, R9W, NMPM

10. Field and Pool
Basin Dakota

11. County and State
San Juan Co., NM

12. CHECK APPROPRIATE BOX TO INDICATE NATURE OF NOTICE, REPORT, OTHER DATA

Type of Submission

Type of Action

☐ Notice of Intent☐ Abandonment☐ Change of Plans☒ Other - BH Repair☒ Subsequent Report☐ Recompletion☐ New Construction☐ Final Abandonment☐ Plugging☐ Non-Routine Fracturing☐ Casing Repair☐ Water Shut off☐ Altering Casing☐ Conversion to Injection

13. Describe Proposed or Completed Operations

See attached for repair detail

RCVD MAY 18 '09

OIL CONS. DIV.

DIST. 3

14. I hereby certify that the foregoing is true and correct.

Signed Tracey N. Monroe Tracey N. Monroe Title Staff Regulatory TechnicianDate 5/11/09

ACCEPTED FOR RECORD

(This space for Federal or State Office use)

APPROVED BY _____ Title _____ Date _____

CONDITION OF APPROVAL, if any:

Title 18 U.S.C. Section 1001. makes it a crime for any person knowingly and willfully to make any department or agency of the United States any false, fictitious or fraudulent statements or representations as to any matter within its jurisdiction

MAY 14 2009

FARMINGTON FIELD OFFICE

BY [Signature]

NMOCD

76

de

Cain #16E
API # 30-045-25740
BH Repair Report

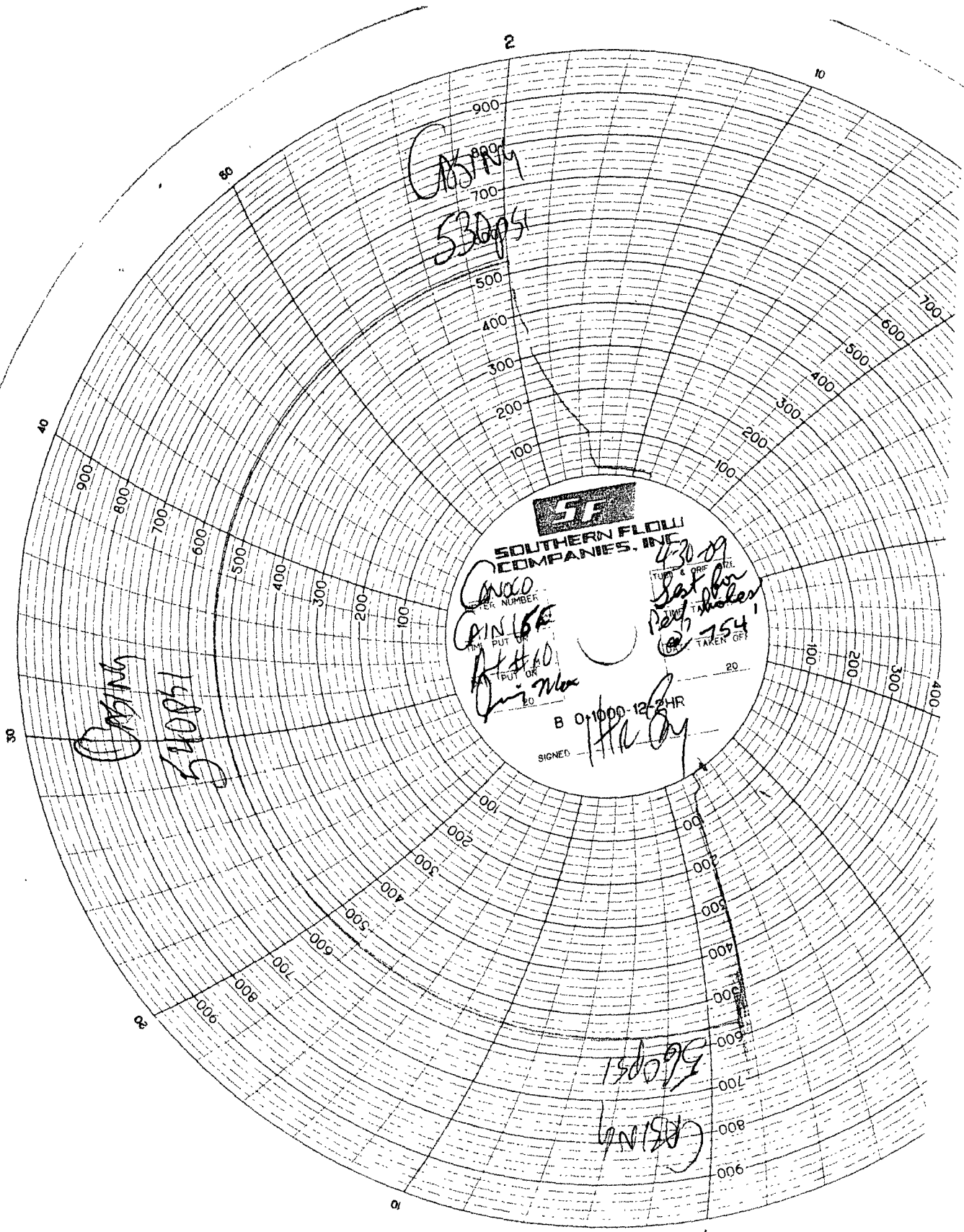
4/8/09 MIRU A-Plus #10. 4/9/09 Kill well w/20% KCL. ND WH, NU BOP-PT-OK. TOH w/2-3/8", tbg. 4/13/09 RIH w/csg scraper to 64 05'. TOO H w/scraper. RU WL, RIH & set CIBP @ 63 71'. RD WL. Load and PT casing to 600#/30 min. Good test. 4/14/09 RU WL & ran logged well from 4250' to surface w/500# pressure on csg. TOC @ 4180' w/Free pipe from 4180' to 2460' & ratty cement from 2460' to 710' with free pipe again from 710' to surface.

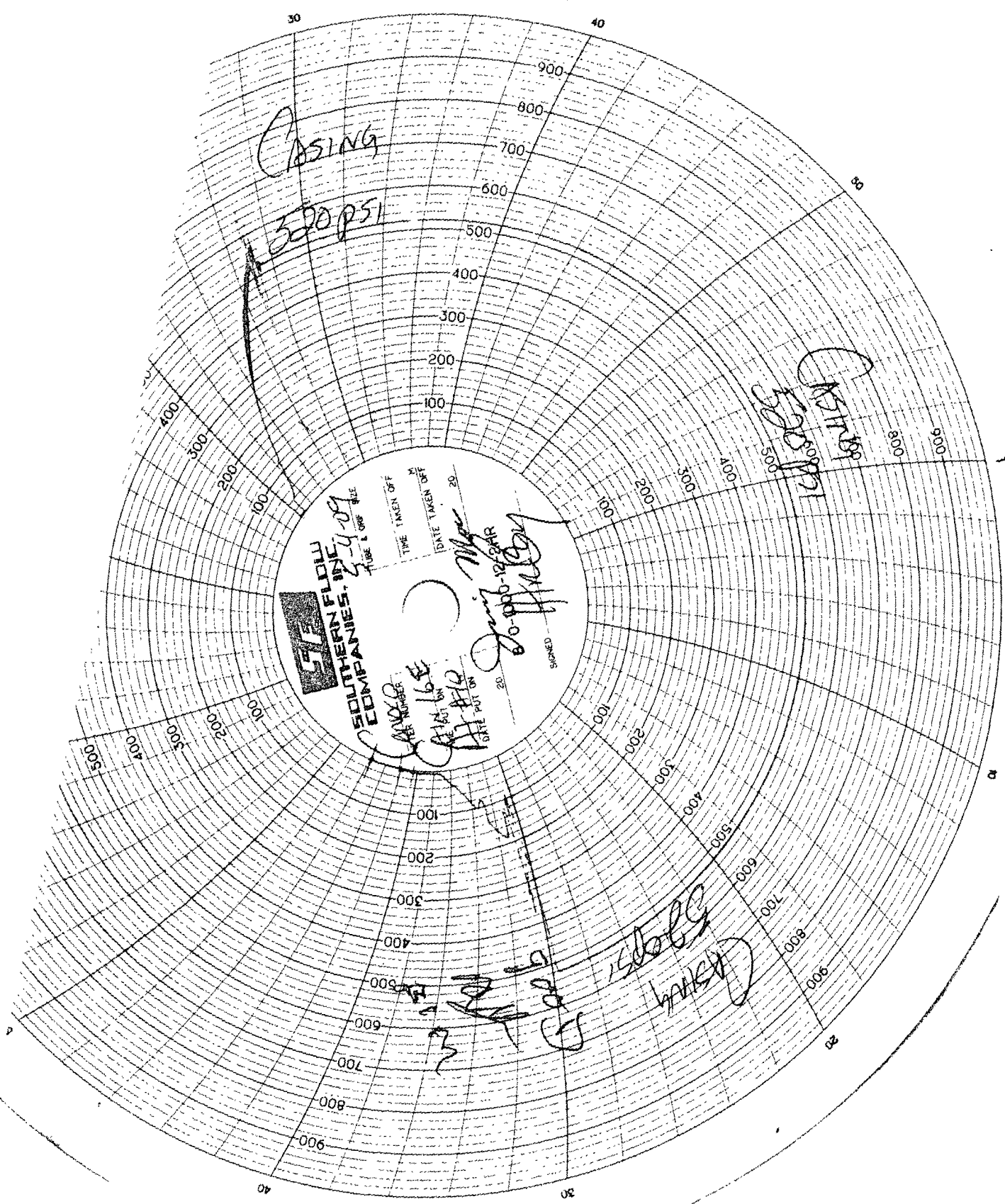
4/14/09 Received approval to perf @ 1050' and squeeze & circ to cement surface to isolate the Ojo @ 889-1070' by Jim Lovato (BLM) & Kelly Roberts (OCD). RD WL. Opened BH & flowed water and found H2S gas. 4/15/09 Shoot 2 squeeze hole @ 1050'. Tried to establish injection rate. Not able to. 4/15/09 Received verbal approval from Jim Lovato & Kelly Roberts to block squeeze @ 1050' & perf @ 750' & try to squeeze cement through new perfs. Also received approval to pump H2S scavenger. TIH to 1117'. Pumped cement plug from 1117' - 949' w/19_sx Class B cement. TOH. Load csg w/2-1/2" bbls FW & PU casing to 1000#. SI w/pressure on it. 4/16/09 TIH tagged cement @ 976'. RU WL & perf'd 3 perfs holes @ 754' - RD WL. Pumped 2 bbls red dye pre-flush w/75 bbls Scavenger BE6 Micro Biocide & Circ. dye out BH valve. Displaced Micro Biocide in csg w/15 bbls 2% KCL. Closed BH valve & displaced w/3 more bbls 2% KCL to perfs. SI w/500# pressure. WOC. RIH w/CR & set @ 683'. PT tbg to 1500# - OK. Break circ out BH valve. Press casing up to 500#. Pumped cement squeeze @ 754' - surface w/343 sx Class B cement. Circ good cement out BH valve. Closed BH valve & squeezed 12 sx outside csg. Pressured to 800# & held. Sting out of retainer & reversed out w/5 bbls, (no cement returned). TOH.

4/20/09 TIH w/bit & tagged cement retainer @ 683'. PT casing, 500#/30 min. Good test. D/O cement retainer & cement from 683' - 762' & chased stringers to 837'. Attempt to PT to 600#/30 min. Test failed. Dropped 150# in 30 min. PU casing scraper & Ran to 810'. TOH w/scraper. RIH w/packer & set @ 788'. PT casing from 788' - 976' good test. Reset packer @ 723' PT casing to 600# from 728' to surface. Good test. Attempt to PT casing below packer Test failed. Casing leaking @ perf holes @ 754'. **4/22/09 Verbal approval received from Jim Lovato & Kelly Roberts to hesitate squeeze leak @ 754'.** TOH w/packer. 4/23/09 Received approval to hesitate squeeze - RU pump & lines. Pumped plug w/15 sx Class B cement from 776' to 644'. TOH. Start hesitation squeeze - pumped .3 bbls @ 750#. PT to 650#/30 min. Held for 30 min. SIWFN. 4/27/09 Check BH, tbg & csg pressures - all zero. TIH w/bit & tagged TOC @ 693'. D/O cement from 693' to 781' & fell thru. CK strings to 837'. RD drilling equipment & RU tbg equipment. PT casing to 680# - test failed.

4/27/09 Received approval from Jim Lovato & Kelly Roberts again to Hesitate squeeze. 4/28/09 RU Halliburton & pumped 20_sx of Micro Matrix cement @ 776' - 555'. TOH w/tbg. Start hesitation squeeze. Squeezed w total of .2 bbls cement & shut in well @ 1200#. Drilled cement & circ. down to TOC @ 976'. D/O cement from 976' to 1119' & checked for stringers to 1179'. 5/4/09 RD drlg equip. RU High Tech - PT casing to 520#/30 min. Good test on chart. RIH w/bit & D/O CIBP 6371' & C/Q to 6613' (PBTD). TOH w/bit. Land 209 jts. 2-3/8", 4.7# J-55 tbg & land @ 6549' w/ND @ 6548'. ND BOP, NU WH. Pumped off check. RD & released rig 5/6/09.

PRINTED IN U.S.A.





Test