

In Lieu of
Form 3160-4
(July 1992)

UNITED STATES
DEPARTMENT OF THE INTERIOR
BUREAU OF LAND MANAGEMENT

SUBMIT IN
DUPLICATE

(See other instructions on
reverse side)

FORM APPROVED
OMB NO 1004-0137
Expires February 28, 1995

WELL COMPLETION OR RECOMPLETION REPORT AND LOG

RECEIVED

APR 01 2009

Bureau of Land Management
Farmington Field Office

1a	TYPE OF WELL	OIL WELL	<input checked="" type="checkbox"/> GAS WELL	DRY	OTHER			
b	TYPE OF COMPLETION	<input checked="" type="checkbox"/> NEW WELL	WORKOVER	DEEPEN	PLUG BACK	DIFF RESVR	OTHER	
2	NAME OF OPERATOR	WILLIAMS PRODUCTION COMPANY						
3	ADDRESS AND TELEPHONE NO	P O Box 640, Aztec, NM 87410 (505) 634-4208						
4	LOCATION OF WELL (Report location clearly and in accordance with any State requirements)*	At Surface: 1980' FSL & 660' FWL, Sec 29 (L), T27N, R3W At top production interval reported below: Same At total depth: Same						
9	API WELL NO	30-039-29935 - 0051						
10	FIELD AND POOL, OR WILDCAT	Blanco Mesa Verde						
11	SEC., T., R., M., OR BLOCK AND SURVEY OR AREA	Sec 29, T27N, R3W						
12	COUNTY OR	Rio Arriba				13 STATE	New Mexico	
14	PERMIT NO	DATE ISSUED				15 ELEVATION CASINGHEAD		
15	DATE SPUDDED	16	DATE T D REACHED	17	DATE COMPLETED (READY TO PRODUCE)	18	ELEVATIONS (DK, RKB, RT, GR, ETC)*	
1-16-09		1-29-09		3-26-09		7209' GR		
20	TOTAL DEPTH, MD & TVD	21	PLUG BACK T D, MD & TVD	22	IF MULTICOMP, HOW MANY	23	INTERVALS DRILLED BY	
6600' MD		6457' MD						
24	PRODUCING INTERVAL(S), OF THIS COMPLETION - TOP, BOTTOM, NAME (MD AND TVD)*						25	WAS DIRECTIONAL SURVEY MADE
Blanco Mesa Verde. 5707' - 6280'						NO		
26	TYPE ELECTRIC AND OTHER LOGS RUN						27	WAS WELL CORED
Array Induction, Gamma Ray-Density-Neutron, Compensated Dual Neutron; CBL's 2/26, 3/5, 3/7, 3/10						NO		

28 CASING REPORT (Report all strings set in well)								
CASING SIZE/GRADE	WEIGHT LB/FT	DEPTH SET (MD)	HOLE SIZE	TOP OF CEMENT, CEMENTING RECORD	AMOUNT PULLED			
10-3/4", K-55	40 5#	334'	14-3/4"	250 SX - SURFACE				
7-5/8", J-55 & P-110	26 4# & 29.7#	6576'	9-7/8"	855 SX - 5370' (CBL)				
29 LINER RECORD								
SIZE	TOP (MD)	BOTTOM (MD)	SACKS CEMENT*	SCREEN (MD)	30 TUBING RECORD			
					SIZE	DEPTH SET (MD)	PACKER SET (MD)	
					2-7/8", 6 5# J-55	6276'		
31 PERFORATION RECORD (Interval, size, and number)				32 ACID, SHOT, FRACTURE, CEMENT SQUEEZE, ETC				
CH/MEN 5707'-6002' Total of 40, 0 34" holes				DEPTH INTERVAL (MD)				AMOUNT AND KIND OF MATERIAL USED
PLO 6074'-6280', Total of 54, 0 34" holes				5707' - 6002' CH/MEN				Fraced with 1303# 20/40 brown sand followed with 4948# Mono Prop
				6074' - 6280' PLO				Fraced with 1193# 20/40 brown sand followed with 4423# Mono Prop
								RCVD APR 7 '09
								OIL CONS. DIV.
								DIST. 3

33 PRODUCTION							
DATE OF FIRST PRODUCTION	PRODUCTION METHOD (Flowing, gas lift, pumping-size and type of pump)	WELL STATUS (PRODUCING OR SI)					
		SI - waiting on evaluation of well					
DATE OF TEST	TESTED	CHOKE SIZE	PROD'N FOR TEST PERIOD	OIL - BBL	GAS - MCF	WATER - BBL	GAS-OIL RATIO
3-23-09	0.5 hrs	2"					
FLOW TBG PRESS	CASING PRESSURE	CALCULATED 24-HOUR RATE		OIL - BBL	GAS - MCF	WATER - BBL	OIL GRAVITY-API (CORR)
0 oz	1/2 oz				112 p/day		
34 DISPOSITION OF GAS (Sold, used for fuel, vented, etc) TO BE SOLD						TEST WITNESSED BY Weldon Huggins	

35 LIST OF ATTACHMENTS	SUMMARY OF POROUS ZONES, WELLBORE DIAGRAM
------------------------	---

36 I hereby certify that the foregoing and attached information is complete and correct as determined from all available records
SIGNED <u>Weldon Huggins</u> TITLE <u>Drilg COM</u> DATE <u>4-1-09</u>

NMOCD

ACCEPTED FOR RECORD
APR 03 2009
FARMINGTON FIELD OFFICE
BY <u>J. Salvendy</u>

37 SUMMARY OF POROUS ZONES (Show all important zones of porosity and contents thereof, cored intervals, and all drill-stem tests, including depth interval tested, cushion used, time tool open, flowing and shut-in pressures, and recoveries)					38 GEOLOGIC MARKERS			
FORMATION	TOP	BOTTOM	DESCRIPTION, CONTENTS, ETC		NAME	TOP		
						NAME	MEASURED DEPTH	TRUE VERTICAL DEPTH
						KIRTLAND	3698'	
						PICTURED CLIFFS	3971'	
						CLIFFHOUSE	5690'	
						MENEFEE	5812'	
						POINT LOOKOUT	6106'	
						MANCOS	6452'	

Jicarilla 92 #2B
Blanco Mesa Verde

Spud Date 01-16-09
Completed 03-26-09
1st Delivered 00-00-00

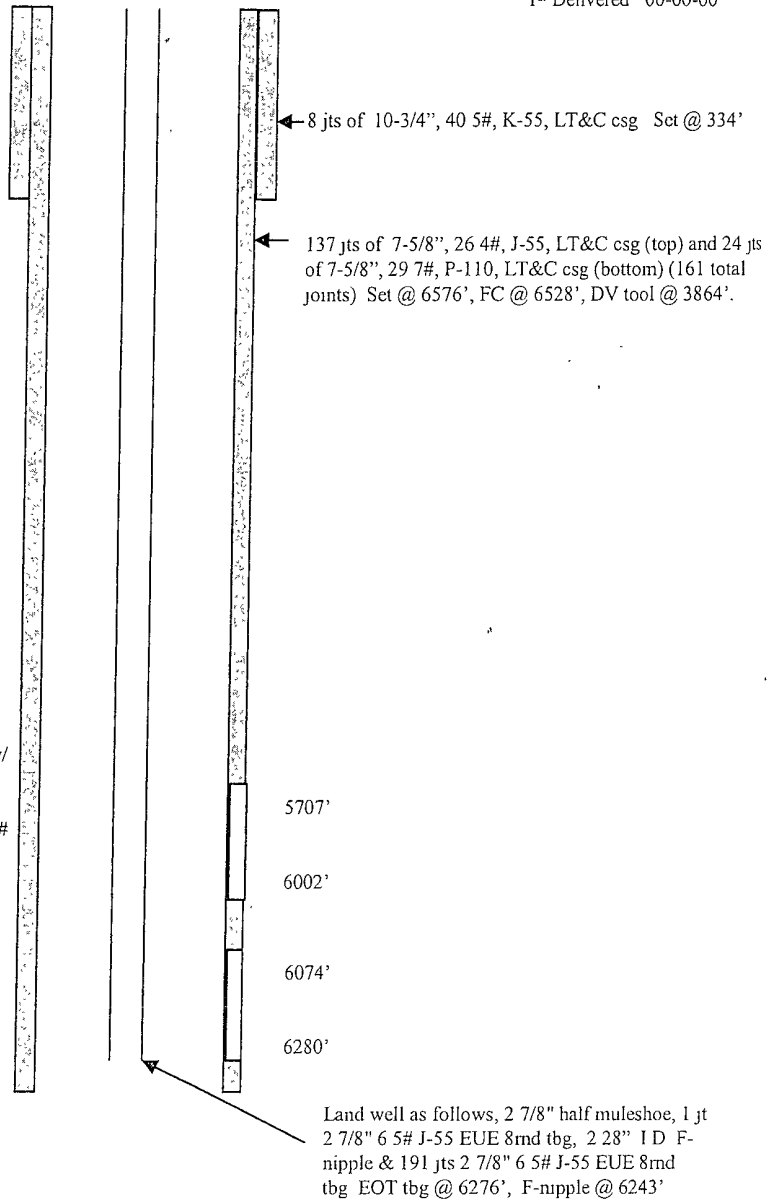
Location:
1980' FSL & 660' FWL
NW/4 SW/4 Section 29 (L), T27N, R03W
Rio Arriba Co, NM

Elevation: 7209' GR
API #: 30-039-29935

<u>Tops</u>	<u>Depth</u>
Fruitland	3738'
Pictured Cliffs	3971'
Cliff House	5690'
Menefee	5812'
Point Lookout	6106'
Mancos	6452'

CliffHouse/Menefee 5707'-6002' (40, 0 34" holes) Frac w/
1303# 20/40 Brown Sand followed with 4948# Mono Prop

Point Lookout 6074'-6280' (54, 0 34" holes) Frac w/ 1193#
20/40 Brown Sand followed with 4423# Mono Prop



<i>HOLE SIZE</i>	<i>CASING</i>	<i>CEMENT</i>	<i>CU. FT.</i>	<i>CMT TOP</i>
14-3/4"	10-3/4", 40.5#	250 s xs	348 cu.ft.	surface
9-7/8"	7-5/8", 26.4# & 29.7#	855 s xs	1912 cu.ft.	5350' (CBL)