

UNITED STATES  
DEPARTMENT OF THE INTERIOR  
BUREAU OF LAND MANAGEMENT

SUBMIT IN DUPLICATE\*  
(See other instructions on reverse side)

FOR APPROVED  
OMB NO. 1004-0137

Expires December 31, 1991

WELL COMPLETION OR RECOMPLETION REPORT AND LOG\*

1a TYPE OF WELL: OIL WELL ☐ GAS WELL ☒ DRY ☐ Other ☐

b TYPE OF COMPLETION:

NEW WELL ☐ WORK OVER ☐ DEEP-EN ☐ PLUG BACK ☐ DIFF RESVR ☐ Other ☐ Recomplete

2 NAME OF OPERATOR

BURLINGTON RESOURCES OIL & GAS COMPANY, LP

3 ADDRESS AND TELEPHONE NO.

PO BOX 4289, Farmington, NM 87499

4 LOCATION OF WELL (Report location clearly and in accordance with any State requirements)\*

At surface Unit G (SWNE) 1820' FNL & 1580' FEL

At top prod. interval reported below Unit H (SENE) 2254' FNL & 1308' FEL

At total depth Unit H (SENE) 2416' FNL & 1234' FEL

5 LEASE DESIGNATION AND SERIAL NO.

I-22-IND-2772

6 IF INDIAN, ALLOTTEE OR TRIBE NAME

Ute Mountain Ute

7 UNIT AGREEMENT NAME

(TIGHT HOLE)

8 FARM OR LEASE NAME, WELL NO

Ute Com 23

9 API WELL NO.

30-045-29265

10. FIELD AND POOL, OR WILDCAT

Barker Dome Desert Creek

11. SEC., T., R., M., OR BLOCK AND SURFACE AREA

Sec. 19 T32N R14W, NMPM

RCVD MAY 20 2009  
OIL CONS. DIV.

DIST. 3

14. PERMIT NO. DATE ISSUED

12. COUNTY OR PARISH  
San Juan

13 STATE

New Mexico

15 DATE SPUNDED  
7/7/95

16. DATE T D REACHED  
12/12/97

17 DATE COMPL (Ready to prod)  
1/2/98

18 ELEVATIONS (DF, RKB, RT, BR, ETC)\*  
GL 6259' KB 6273'

19 ELEV CASINGHEAD

20. TOTAL DEPTH, MD & TVD  
8372'  
8635' TMD/8603' TVD

21 PLUG, BACK T D., MD & TVD  
8388' TMD/8356' TVD

22 IF MULTIPLE COMPL, HOW MANY\*  
1

23. INTERVALS DRILLED BY

ROTARY TOOLS

CABLE TOOLS

yes

24. PRODUCTION INTERVAL (S) OF THIS COMPLETION-TOP, BOTTOM, NAME (MD AND TVD)\*

Barker Dome Desert Creek 8416' - 8472'

25. WAS DIRECTIONAL SURVEY MADE  
No

26 TYPE ELECTRIC AND OTHER LOGS RUN

GR, CCL

27 WAS WELL CORED

No

CASING RECORD (Report all strings set in well)

CASING SIZE/GRADE	WEIGHT, LB/FT	DEPTH SET (MD)	HOLE SIZE	TOP OF CEMENT, CEMENTING RECORD	AMOUNT PULLED
8 5/8"	24#	1042'	12 1/4"	844 cf	
5 1/2"	17#	8718'	7 7/8"	4959 cf	
3 1/2"	9.2/9.3#	8628'		196 cf	

29. LINER RECORD

SIZE	TOP (MD)	BOTTOM (MD)	SACKS CEMENT*	SCREEN (MD)

30. TUBING RECORD

SIZE	DEPTH SET (MD)	PACKER SET (MD)

31 PERFORATION RECORD (Interval, size and number)

@ 1 SPF

8416' - 8446', 8454' - 8459' = 35 holes

8466' - 8472' = 6

Total holes = 41

32 ACID, SHOT, FRACTURE, CEMENT SQUEEZE, ETC.

8416' - 8472' A/4000 gals 15% FE acid, w/1091 bbls VCA 15% HCL

33 PRODUCTION

DATE FIRST PRODUCTION		PRODUCTION METHOD (Flowing, gas lift, pumping--size and type of pump)				WELL STATUS (Producing or shut-in)	
SI-w/o facilities		Flowing				SI	
DATE OF TEST	HOURS TESTED	CHOKE SIZE	PROD'N FOR TEST PERIOD	OIL--BBL	GAS--MCF	WATER--BBL	GAS-OIL RATIO
1/3/98	1	1/2"	→	0 boph	83 mcf/h	4 bwph	
FLOW TUBING PRESS.	CASING PRESSURE	CALCULATE 24-HOUR RATE	OIL--BBL	GAS--MCF	WATER--BBL	OIL GRAVITY-API (CORR.)	
	SI - 750#	→	0 boph	2000 mcf/d	96 bwph		

34. DISPOSITION OF GAS (Sold, used for fuel, vented, etc)

To be sold.

35 LIST OF ATTACHMENTS

This well is a Barker Dome Desert Creek stand-alone

36 I hereby certify that the foregoing and attached information is complete and correct as determined from all available records.

SIGNED Chondra Page TITLE Regulatory Technician

DATE 3/9/09

\*(See Instructions and Spaces for Additional Data on Reverse Side)

Title 18 U.S.C. Section 1001, makes it a crime for any person knowingly and willfully to make to any department or agency of the United States any false, fictitious or fraudulent statements or representations as to any matter within its jurisdiction.

Bureau of Land Management  
Durango Colorado

RECEIVED

MAILED

District I  
PO Box 1980, Hobbs, NM 88240-1980  
District II  
PO Drawer DD, Artesia, NM 88211-0719  
District III  
1000 Rio Grande Rd., Aztec, NM 87410  
District IV  
PO Box 2088, Santa Fe, NM 87504-2088

State of New Mexico  
Energy, Minerals & Natural Resources Department

OIL CONSERVATION DIVISION  
PO Box 2088  
Santa Fe, NM 87504-2088

Form C-102  
Revised February 21, 1994  
Instructions on back  
Submit to Appropriate District Office  
State Lease - 4 Copies  
Fee Lease - 3 Copies

"as drilled plat"

☐ AMENDED REPORT

RCVD MAY 20 '09  
OIL CONS. DIV.

WELL LOCATION AND ACREAGE DEDICATION PLAT

' API Number 30-045-29265	' Pool Code 96353	' Pool Name Barker Dome Desert Creek	DIST. 3
' Property Code 17211	' Property Name Ute Com.		' Well Number 23
' OGRID No. 14538	' Operator Name Burlington Resources Oil & Gas Company		' Division 6259'

10 Surface Location

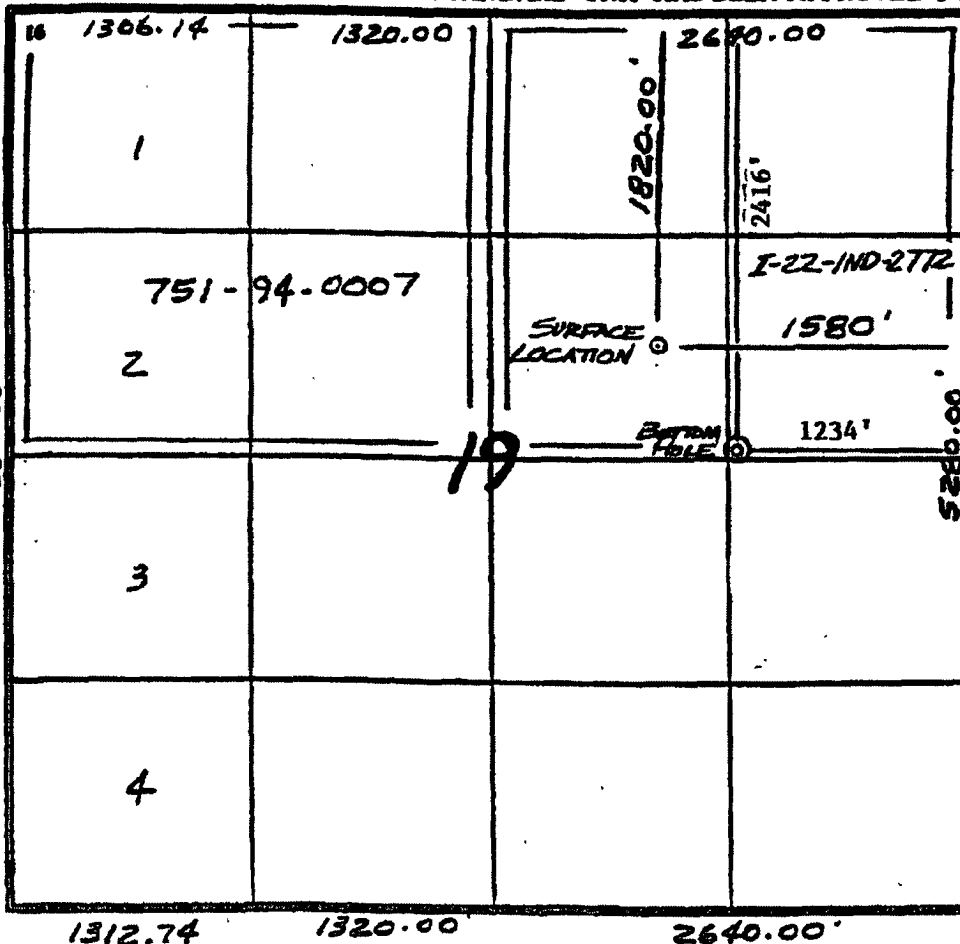
UL or lot no.	Section	Township	Range	Lot Ids	Feet from the	North/South line	Feet from the	East/West line	County
G	19	32N	14W		1820	North	1580	East	S.J.

11 Bottom Hole Location If Different From Surface

UL or lot no.	Section	Township	Range	Lot Ids	Feet from the	North/South line	Feet from the	East/West line	County
H	19	32N	14W		2416	North	1234	East	S.J.

' Dedicated Acres N=320	' Joint or Infill	' Consolidation Code	' Order No.
----------------------------	-------------------	----------------------	-------------

NO ALLOWABLE WILL BE ASSIGNED TO THIS COMPLETION UNTIL ALL INTERESTS HAVE BEEN CONSOLIDATED  
OR A NON-STANDARD UNIT HAS BEEN APPROVED BY THE DIVISION



17 OPERATOR CERTIFICATION

I hereby certify that the information contained herein is true and complete to the best of my knowledge and belief, and that this organization either owns a working interest or unleased mineral interest in the land including the proposed bottom hole location or has a right to drill this well in this location pursuant to a contract with an owner of such a mineral or working interest, or to a voluntary pooling agreement or a compulsory pooling order heretofore entered by the division.

*Tamra Sessions* 10/8/08  
Signature Date

Tamra Sessions  
Printed Name

18 SURVEYOR CERTIFICATION

I hereby certify that the well location shown on this plat was plotted from field notes of actual surveys made by me or under my supervision, and that the same is true and correct to the best of my belief.

8/04/1997

Date of Survey

Signature and Seal of Professional Surveyor:

6857

Certificate Number