

UNITED STATES
DEPARTMENT OF THE INTERIOR
BUREAU OF LAND MANAGEMENT

RECEIVED

Sundry Notices and Reports on Wells

JUN 04 2009

Bureau of Land Management
Farmington Field Office

1. Type of Well
GAS

6. Lease Number
SF-080712A
If Indian, All. or
Tribe Name

2. Name of Operator
BURLINGTON
RESOURCES OIL & GAS COMPANY LP

7. Unit Agreement Name

3. Address & Phone No. of Operator

PO Box 4289, Farmington, NM 87499 (505) 326-9700

8. San Juan 30-6 Unit
Well Name & Number
San Juan 30-6 Unit 135

4. Location of Well, Footage, Sec., T, R, M

Surf: Unit O (SWSE), 885' FSL & 1555' FEL, Section 27, T30N, R6W, NMPM

9. API Well No.
30-039-26448

10. Field and Pool

11. Basin Dakota
County and State
Rio Arriba Co., NM

12. CHECK APPROPRIATE BOX TO INDICATE NATURE OF NOTICE, REPORT, OTHER DATA

Type of Submission
☒ Notice of Intent
☐ Subsequent Report
☐ Final Abandonment

Type of Action
☒ Abandonment
☐ Recompletion
☐ Plugging
☐ Casing Repair
☐ Altering Casing

Change of Plans
☐ New Construction
☐ Non-Routine Fracturing
☐ Water Shut off
☐ Conversion to Injection

Other -

RCVD JUN 12 '09
OIL CONS. DIV.
DIST. 3

13. Describe Proposed or Completed Operations

Burlington Resources wishes to P&A this well per the attached procedures and well bore schematics. Work to be completed once internal and external approval has been obtained.

14. I hereby certify that the foregoing is true and correct.

Signed Tracey N. Monroe Tracey N. Monroe Title Staff Regulatory Technician Date 6/3/09

(This space for Federal or State Office use)

APPROVED BY Original Signed: Stephen Mason Title _____ Date JUN 10 2009

CONDITION OF APPROVAL, if any:

Title 18 U.S.C. Section 1001, makes it a crime for any person knowingly and willfully to make any department or agency of the United States any false, fictitious or fraudulent statements or representations as to any matter within its jurisdiction

NMOCD

6/29

pc

PLUG AND ABANDONMENT PROCEDURE

April 17, 2009

San Juan 30-6 Unit #135

Basin Dakota
885' FSL and 1555' FEL, Section 27, T30N, R6W
Rio Arriba County, New Mexico / API 30-039-26448
Lat: N 36°46'43.32" / Long: W 107°26'45.924"

Note: All cement volumes use 100% excess outside pipe and 50' excess inside. The stabilizing wellbore fluid will be 8.3 ppg, sufficient to balance all exposed formation pressures. All cement will be Class B, mixed at 15.8 ppg with a 1.18 cf/sx yield.

1. This project requires a NMOCD C-144 CLEZ Closed-Loop System Permit for the use of an A-Plus steel tank to handle waste fluids circulated from the well and cement wash up.
2. Install and test location rig anchors. Comply with all NMOCD, BLM, and Operator safety regulations. MOL and RU daylight pulling unit. Conduct safety meeting for all personnel on location. Record casing, tubing and bradenhead pressures. NU relief line and blow down well. Kill well with water as necessary and at least pump tubing capacity of water down the tubing. ND wellhead and NU BOP. Function test BOP.
3. Rods: Yes ☐ , No ☒ , Unknown ☐ ;
Tubing: Yes ☒ , No ☐ , Unknown ☐ , Size 2.375" , Length 8023' ;
Packer: Yes ☐ , No ☒ , Unknown ☐ , Type ☐ .
If this well has rods or a packer, then modify the work sequence in step #2 as appropriate. TOH with the tubing and tally.
4. **Plug #1 (Dakota perforations and top, 8080' – 7980')**: TIH and tag existing CIBP at 8080'. Pressure test the 4.5" casing to 800 PSI. *If the casing does not test, then spot or tag the subsequent plugs as appropriate.* Do not circulate the well clean if the casing is filled with corrosion inhibited water. Mix 12 sxs Class B cement and spot a balanced plug inside casing. PUH.

6805' 6705'
5. **Plug #2 (Gallup top, ~~6923'~~ – ~~6823'~~)**: Mix 12 sxs Class B cement and spot a balanced plug inside casing to cover Gallup top. TOH with the tubing.

5710 5610
6. **Plug #3 (Mesaverde top, ~~5416'~~ – ~~5316'~~)**: Run a wireline gauge ring to 5500'. Perforate 3 HSC holes at 5416'. Establish an injection rate into the squeeze holes. TIH and set a 4.5" CR at 5366'. Mix 30 sxs Class B cement, squeeze 18 sxs outside the casing and leave 12 sxs inside to cover the Mesaverde top. TOH with tubing.
7. **Plug #4 (Chacra top, 4557' – 4457')**: Perforate 3 HSC holes at 4557'. Establish an injection rate into the squeeze holes. TIH and set a 4.5" CR at 4507'. Mix 30 sxs Class B cement, squeeze 18 sxs outside the casing and leave 12 sxs inside to cover the Chacra top. TOH with tubing.

8. Perforate the 4.5' casing at 4200'. Attempt to establish circulation to surface out the intermediate casing valve with water. If the 4.5" x 7" annulus circulates, then ND the BOP and the tubing head. Then weld a slip on collar onto the 4.5" casing stub with two side straps. Pick up on the 4.5" casing and then jet cut it at approximately 4190'. NU the tubing head and BOP; install 4.5" rams. Pull and LD the 4.5" casing. Install the 2.375" BOP rams.
9. **Plug #5 (7" Casing shoe, 4250' – 4080')**: Round trip a 7" casing scraper or wireline gauge ring to 4140'. TIH and set a 7" CR at 4130'. Load the 7" casing with water and circulate the well clean. Pressure test the casing to 800 PSI. *If the casing does not test, then spot or tag the subsequent plugs as appropriate.* Establish rate below the CR. Mix 45 sxs Class B cement, pump 25 sxs below the CR to cover the 4.5" casing stub and the 7" casing shoe; then leave 20 sxs above the CR. TOH with tubing.
3825 3376
10. **Plug #6 (Pictured Cliffs and Fruitland top, 3740' – 3450')**: Mix 76 sxs Class B cement and spot a balanced plug inside casing. PUH with the tubing.
11. **Plug #7 (Kirtland and Ojo Alamo tops, 3070' – 2736')**: Mix 74 sxs Class B cement and spot a balanced plug inside casing. PUH with the tubing.
1633 1533
12. **Plug #8 (Nacimiento top, 1650' – 1550')**: Mix 29 sxs Class B cement and spot a balanced plug inside casing. PUH with the tubing.
13. **Plug #9 (Surface casing, 288' – Surface)**: Attempt to pressure test the bradenhead annulus to 300#. If the BH annulus holds pressure, then establish circulation out casing valve with water. Mix approximately 60 sxs Class B cement and spot a balanced plug from 288' to surface, circulate good cement out casing valve. TOH and LD tubing. Shut well in and WOC. If the BH annulus does not test, then perforate at the appropriate depth and attempt to circulate cement to surface filling the casing and the annulus.
14. ND BOP and cut off wellhead below surface casing flange. Install P&A marker with cement to comply with regulations. RD, MOL and cut off anchors. Restore location per BLM stipulations.

San Juan 30-6 Unit #135

Current

Basin Dakota

885' FSL, 1555' FEL Section 27, T-30-N, R-6-W, Rio Arriba County, NM

API #30-039-26448 / Lat: N 36°46'43.32" / Long: W 107°26'45.924"

Today's Date: 4/17/09

Spud: 6/12/00

Completed: 10/23/00

Elevation: 6850' GL
6862' KB

12.25" hole

Nacimiento @ 1600' *
estimate

Ojo Alamo @ 2786' *
estimate

Kirtland @ 3020' *
estimate

Fruitland @ 3450' *
estimate

Pictured Cliffs @ 3690' *
estimate

8.75" Hole

Chacra @ 4507'

Mesaverde @ 5366'

Gallup @ 6873'

Dakota @ 8125'

6.25 " Hole

TD 8423'
PBTD 8416'

7" TOC at Surface,
circulated 40 bbls cement.

9.625" 32.3#, H-40 Casing set @ 238'
Cement with 236 cf, circ to surface.

2.375" tubing at 8023'
(256 joints, 4.7#, J-55)

RCVD JUN 12 '09

OIL CONS. DIV.

DIST. 3

DV Tool @ 3566'
Cement with 1170 cf, circulated
40 bbls cement to surface

7" 20#, J-55 Casing set @ 4183'
Cement with 216 cf;
circulated 8 bbls to surface

4.5" TOC @ 6128' (CBL, 2000)

CIBP set at 8080' (2004)

Dakota Perforations:
8126' - 8340'

CIBP set at 8266' (2004)

CIBP set at 8290' (2001)

4.5" 10.5#, J-55 Casing set @ 8416'
Cement with 613 cf

RCVD JUN 12 '09

OIL CONS. DIV.

DIST. 3

San Juan 30-6 Unit #135

Proposed P&A

Basin Dakota

885' FSL, 1555' FEL Section 27, T-30-N, R-6-W, Rio Arriba County, NM

API #30-039-26448 / Lat: N 36°46'43.32" / Long: W 107°26'45.924"

Today's Date: 4/17/09

Spud: 6/12/00

Completed: 10/23/00

Elevation: 6850' GL
6862' KB

12.25" hole

Nacimientos @ 1600' *
estimate

Ojo Alamo @ 2786' *
estimate

Kirtland @ 3020' *
estimate

Fruitland @ 3450' *
estimate

Pictured Cliffs @ 3690' *
estimate

Cut Casing @ 4190'

Perforate @ 4200'

Chacra @ 4507'

Set CR @ 4507'

Perforate @ 4557'

Mesaverde @ 5366'

Set CR @ 5366'

Perforate @ 5416'

Gallup @ 6873'

Dakota @ 8125'

6.25" Hole

TD 8423'
PBTD 8416'

7" TOC Surface

Plug #9: 288' – 0'
Class B cement, 60 sxs

9.625" 32.3#, H-40 Casing set @ 238'
Cement with 236 cf, circ to surface.

Plugs #7, 8 & 9
may be inside outside
depending on the TOC

Plug #8: 1650' – 1550'
Class B cement, 29 sxs

Plug #7: 3070' – 2736'
Class B cement, 74 sxs

Plug #6: 3740' – 3450'
Class B cement, 76 sxs

DV Tool @ 3566'
Cement with 1170 cf,
circulated 40 bbls

Set CR @ 4130'

Plug #5: 4250' – 4080'
Class B cement, 45 sxs:
25 sxs below CR
and 20 above

7" 20#, J-55 Casing set @ 4183'
Cement with 216 cf;
circulated 8 bbls to surface

Plug #4: 4557' – 4457'
Class B cement, 30 sxs:
12 inside and 18 outside

Plug #3: 5416' – 5316'
Class B cement, 30 sxs:
12 inside and 18 outside

4.5" TOC @ 6128'
(CBL, 2000)

Plug #2: 6923' – 6823'
Class B cement, 12 sxs

CIBP set at 8080' (2004)

Plug #1: 8080' – 7980'
Class B cement, 12 sxs

Dakota Perforations:
8126' – 8340'

CIBP set at 8266' (2004)

CIBP set at 8290' (2001)

4.5" 10.5#, J-55 Casing set @ 8416'
Cement with 613 cf

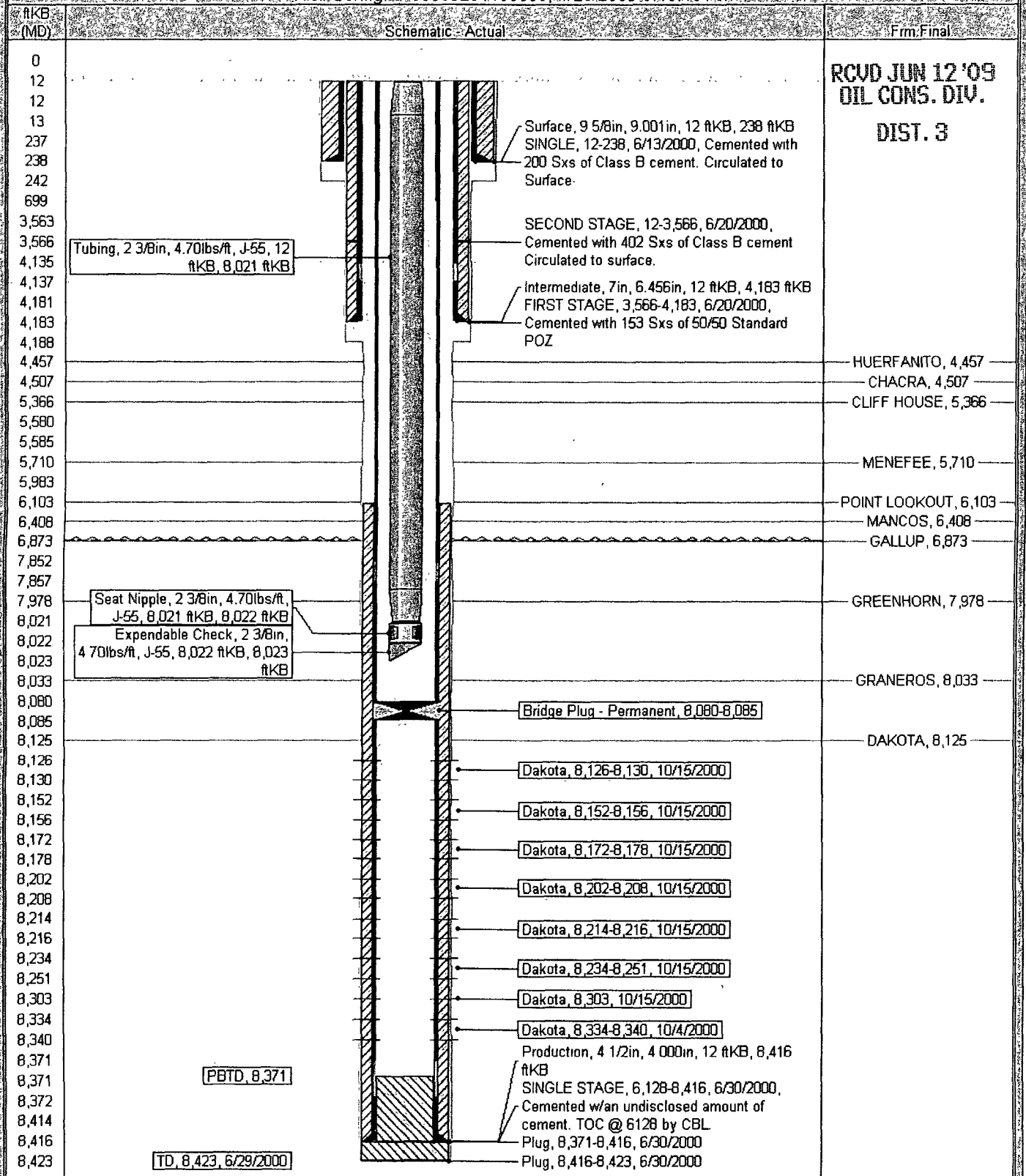
Current Schematic - Revised

ConocoPhillips

Well Name: SAN JUAN 30-6 UNIT #135

API / UWI 3003926448	Surface Legal Location NMPM.027-030N-006W	Field Name BASIN DAKOTA (PRORATED GAS)	License No	State/Province NEW MEXICO	Well Configuration Type	Edit
Ground Elevation (ft) 6,838.00	Original KB/RT Elevation (ft) 6,850.00	KB Ground Distance (ft) 12.00	KB Casing Flange Distance (ft) 6,850.00	KB Tubing Hanger Distance (ft) 6,850.00		

Well Config: 30039264480000, 4/28/2009 8:18:16 AM



**UNITED STATES DEPARTMENT OF THE INTERIOR
BUREAU OF LAND MANAGEMENT
FARMINGTON DISTRICT OFFICE
1235 LA PLATA HIGHWAY
FARMINGTON, NEW MEXICO 87401**

Attachment to notice of
Intention to Abandon:

Re: Permanent Abandonment
Well: 135 San Juan 30-6 Unit

CONDITIONS OF APPROVAL

1. Plugging operations authorized are subject to the attached "General Requirements for Permanent Abandonment of Wells on Federal and Indian Lease."
2. Farmington Office is to be notified at least 24 hours before the plugging operations commence (505) 599-8907.
3. The following modifications to your plugging program are to be made:
 - a) Place the Gallup plug from 6805' – 6705'.
 - b) Place the Mesaverde plug from 5710' – 5610' inside and outside the 4 ½" casing.
 - c) Place the Pictured Cliffs/Fruitland plug from 3825' – 3396'.
 - d) Place the Nacimiento plug from 1633' – 1533'.

You are also required to place cement excesses per 4.2 and 4.4 of the attached General Requirements.

Office Hours: 7:45 a.m. to 4:30 p.m.