

In Lieu of
Form 3160
(June 1990)

UNITED STATES
DEPARTMENT OF INTERIOR
BUREAU OF LAND MANAGEMENT

RECEIVED

JUN 25 2009

FORM APPROVED
Budget Bureau No. 1004-0135
Expires: March 31, 1993

SUNDRY NOTICE AND REPORTS ON WELL ABANDONMENT
Do not use this form for proposals to drill or to deepen or reentry to a different reservoir
TO DRILL" for permit for such proposals

5. Lease Designation and Serial No.
NMSF-078763
6. If Indian, Allottee or Tribe Name
N/A
7. If Unit or CA, Agreement Designation
Rosa Unit
8. Well Name and No.
Rosa Unit #350A
9. API Well No.
30-039-29789
10. Field and Pool, or Exploratory Area
Basin Fruitland Coal
11. County or Parish, State
Rio Arriba, NM

SUBMIT IN TRIPLICATE

1. Type of Well
Oil Well ☒ Gas Well ☐ Other ☐
2. Name of Operator
WILLIAMS PRODUCTION COMPANY
3. Address and Telephone No.
PO BOX 640 Aztec, NM 87410-0640
4. Location of Well (Footage, Sec., T., R., M., or Survey Description)
Surface: 615' FNL & 15' FWL / BHL: 710' FNL & 722' FWL Sec. 10, T31N, R5W

CHECK APPROPRIATE BOX(s) TO INDICATE NATURE OF NOTICE, REPORT, OR OTHER DATA

TYPE OF SUBMISSION	TYPE OF ACTION
Notice of Intent	Abandonment
<input checked="" type="checkbox"/> Subsequent Report	Recompletion
Final Abandonment	Plugging Back
	Casing Repair
	Altering Casing
	Other - Cavitation/Casing
	Change of Plans
	New Construction
	Non-Routine Fracturing
	Water Shut-Off
	Conversion to Injection
	Dispose Water
	(Note: Report results of multiple completion on Well Completion or Recompletion Report and Log form.)

13. Describe Proposed or Completed Operations (Clearly state all pertinent details, and give pertinent dates, including estimated date of starting any proposed work. If well is directionally drilled, give subsurface locations and measured and true vertical depths for all markers and zones pertinent to this work)*

06-01-2009

Recap: LO equip on Triple S & road rig & equip from Rosa # 311A to Rosa # 350A. MIRU, WO Vaughn roustabout to take out tank berm to spot equip on back opposite side of rig. SICP 620 psi, bleed csg down @ 2" line. ND SR WH, NU BOPE. RU rig floor, PU & RU tongs & equip. Secure well & equip, SWIFN.

06-02-2009

Recap: Ck & SU equip, SICP 800 psi, bleed down well @ 2" line to pit. POOW w/ tbg hanger & un-land well. TOOH & std back 105 jts 2-7/8" 6.5# J-55 EUE 8rd IJ tbg, 2.28" F-nipple, & 2-7/8" 6.5# J-55 EUE 8rd IJ tbg, 2-7/8" mule shoe. Vaughn Oilfield Serv on loc to NU blooie lines. PU & RU manual tongs, tally, PU, MU & RIW as follows, 6-1/4" button bit, bit sub, eight 4-3/4" DC's, XO sub & 102 jts 2-7/8" AOH DP. Secure well & equip, SWIFN.

06-03-2009

Recap: Ck & SU equip, SICP 800 psi, bleed well down @ 2" line to pit. PU DP sgls ck for fill, tagged fill @ 3648', 12' of fill, break circ w/ 10 bph air-mist w/ 1 gal foamer, 1/2 gal shale treat & 1/2 gal corrosion inhibitor per 20 bbls prod wtr, break circ w/ air-mist CO to TD @ 3660', returned light line to 1/8" coal & hvy black wtr. Blow well dry w/ air. LD 8 jts DP, pull into 7" csg. Hang back 3.5 PS. FLOW TEST: Duration = 1hr, Test Method = Pitot, MCF/D = 158 mcf/d, Csg PSI = 10z, Gas Type = dry, Gas Disposition = non-flaring, Choke Size = 2" open line. SIW for 1hr press build up test. Turn well over to FB & air hand for cavitation. Cavitate well w/ energized surges to 1200 psi, spray FW across mufflers when surges are released.

RCVD JUL 1 '09
OIL CONS. DIV.

14. I hereby certify that the foregoing is true and correct

Signed

Larry Higgins

Title Drilling COM

Date 6-25-09

DIST. 3

ACCEPTED FOR RECORD

(This space for Federal or State office use)

Approved by

Title

Date

Conditions of approval, if any:

JUN 29 2009
FARMINGTON FIELD OFFICE

NRMOCD

Title 18 U.S.C. Section 1001, makes it a crime for any person knowingly and willfully to make to any department or agency of the United States any false, fictitious or fraudulent statements or representations as to any matter within its jurisdiction.

Rosa Unit #350A – Page 2

06-04-2009

Recap: FB & air hand cavitate well w/ energized surges to 1200 psi, spray FW across mufflers when surges are released. Ck & SI equip, 4 hr SICP 600 psi, bleed well down @ blooie line to pit. PU DP sgls ck for fill, tagged fill @ 3520' 140' of fill, break circ w/ 10 bph air-mist, w/ 1 gal foamer, 1/2 gal shale treat & 1/2 gal corrosion inhibitor per 20 bbls prod wtr. Break circ w/ air-mist CO to TD @ 3660', returned hvy 1/2" to fine coal & hvy black wtr. Blow well dry w/ air. LD 8 jts DP, pull into 7" csg. Hang back 2.5-PS. Turn over to FB & air hand for cavitation w/ energized surges to 1200 psi, spray FW across mufflers when surges are released.

06-05-2009

Recap: FB & air hand cavitate well w/ energized surges to 1200 psi, spray FW across mufflers when surges are released. Ck & SU equip, 4 hr SICP 110 psi, bleed well down @ blooie line to pit. PU DP sgls ck for fill, tagged fill @ 3433', bridge, break circ w/ 10 bph air-mist, w/ 1 gal foamer, 1/2 gal shale treat & 1/2 gal corrosion inhibitor per 20 bbls prod wtr. Break circ w/ air-mist CO to TD @ 3660', returned hvy fine to 2" coal, med amount of fine to 1/4" & hvy black wtr. Blow well dry w/ air. LD 8 jts DP, pull into 7" csg, hang back swivel. Flow well for 1 hr get air out of well for Pitot. FLOW TEST: Duration = 1hr, Test Method = Pitot, MCF/D = 217 mcf/d, Csg PSI = 2oz, Tbg PSI = 0 psi, Gas Type = Dry, Gas Disposition = non-flaring, Choke Size = 2" open line. Turn well over to FB & air hand for cavitation w/ energized surges to 1000 psi, spray FW across mufflers when surges are released.

06-06-2009

Recap: FB & air hand cavitate well w/ energized surges to 1000 psi, spray FW across mufflers when surges are released.

06-07-2009

Recap: FB & air hand cavitate well w/ energized surges to 1000 psi/1200 psi, spray FW across mufflers when surges are released.

06-08-2009

Recap: FB & air hand cavitate well w/ energized surges to 1200 psi, spray FW across mufflers when surges are released. Ck & SU equip, 4 hr SICP 690 psi, bleed well down @ blooie line to pit. PU, DP sgls ck for fill, tagged fill @ 3434', 226' of fill. Break circ w/ 10 bph air-mist, w/ 1gal foamer, 1/2gal shale treat, & 1/2 gal corrosion inhibitor per 20 bbls prod wtr. Break circ w/ air-mist CO to TD @ 3660', returned hvy fine to 1/2" coal, light amounts shale fines & hvy black wtr. Run sweeps as needed. Blow well dry w/ air, LD 8 jts DP, pull into 7" csg, hand back swivel. Flow well for 1 hr get air out of well for pitot. FLOW TEST: Duration = 1 hr, Test Method = Pitot, MCF/D = 372 mcf/d, Csg PSI = 6oz, Tbg PSI = 0 psi, Gas Type = dry, Gas Disposition = non-flaring, Choke Size = 2" open line. Turn well over to FB & air hand for cavitation of well w/ energized surges to 1400 psi, spray FW across mufflers when surges are released.

06-09-2009

Recap: FB & air hand cavitate well w/ energized surges to 1200 psi, spray FW across mufflers when surges are released. Ck & SU equip, 4 hr SICP 810 psi, bleed well down @ blooie line to pit. PU DP sgls ck for fill, tagged fill @ 3400', 260' of fill inside of csg. Break circ w/ 10 bph air-mist w/ 1gal foamer, 1/2 gal shale treat & 1/2 gal corrosion inhibitor per 20 bbls prod wtr, tight spot @ 3500', break circ w/ air-mist CO to TD @ 3660', returned hvy fine to 2" coal & hvy black wtr. Run sweeps as needed. LD 8 jts DP, pull into 7" csg, hang back swivel. Secure well, turn over to FB & air hand for cavitation w/ energized surges to 1400 psi, spray FW across mufflers when surges are released.

06-10-2009

Recap: FB & air hand cavitate well w/ energized surges to 1200 psi, spray FW across mufflers when surges are released. Ck & SU equip, 4 hr SICP 520 psi, bleed well down @ blooie line to pit. PU DP sgls, ck for fill tagged fill @ 3400', 260' of fill, break circ w/ 10 bph air-mist, w/ 1gal foamer, 1/2 gal shale treat, 1/2 gal corrosion inhibitor per 20 bbls prod wtr, tight spot @ 3500' to 3542', break circ w/ air-mist CO to TD @ 3660', returned hvy fine to 1/8" coal & shale & hvy black wtr. Run sweeps as needed. Blow well dry w/ air, LD 8 jts DP, pull into 7" csg, hang back swivel. Flow well for 1 hr get air out of well for Pitot. FLOW TEST: Duration = 1hr, Test Method = Pitot, MCF/D = 309 mcf/d, Csg PSI = 4 oz, Tbg PSI = 0 psi, Gas Type = dry, Gas Disposition = non-flaring, Choke Size = 2" open line. Turn well over to FB & air hand for cavitation w/ energized surges, spray FW across mufflers when surges are released.

06-11-2009

Recap: FB & air hand cavitate well w/ energized surges to 1200 psi, spray FW across mufflers when surges are released. Ck & start equip, 4 hr SICP 700 psi, bleed well down @ blooie line to pit. PU DP sgls ck for fill, tagged fill @ 3446', 214' of fill. Break circ w/ 10 bph air-mist, w/ 1 gal foamer, 1/2 gal shale treat, 1/2 gal corrosion inhibitor, per 20 bbls prod wtr, tight spot @ 3465' to 3500' break circ w/ air-mist CO to TD @ 3660', returned hvy fine to 1/8" coal, shale mix & hvy black wtr. Run sweeps as needed. Blow well dry w/ air, LD 8 jts DP, pull into 7" csg, hang back swivel. Secure well, turn over to FB & air hand for cavitation of well w/ energized surges, spray FW across mufflers when surges are released.

06-12-2009

Recap: FB & air hand cavitate well w/ energized surges, spray FW across mufflers when surges are released. Ck & SU equip, 4 hr SICP 520 psi, bleed well down @ blooie line to pit. PU DP sgls ck for fill, tagged fill @ 3480', 180' bridges/fill, break circ w/ 10 bph air-mist w/ 1 gal foamer, 1/2 gal shale treat, 1/2 gal corrosion inhibitor per 20 bbls prod wtr, tight spot @ 3542' & 3625', work pipe, CO to TD @ 3660', returned hvy fine to 1/8" coal & shale mix & hvy black wtr. Run sweeps as needed. Blow well dry w/ air LD 8 jts DP, pull into 7" csg, hang back swivel, flow well for 1hr get air out of well for Pitot. FLOW TEST: Duration = 1hr, Test Method = Pitot, MCF/D = 309mcf/d, Csg PSI = 4oz, Tbg PSI = 0 psi, Gas Type = dry, Gas disposition = Non-flaring, Choke Size = 2" open line. Turn over to FB & air hand for cavitation of well w/ energized surges, spray FW across mufflers when surges are released.

06-13-2009

Recap: FB & air hand cavitate well w/ energized surges to 1200 psi, follow surges w/ air-mist, NF well for 30 min, spray FW across mufflers when surges are released to keep dust down.

06-14-2009

Recap: FB & air hand cavitate well w/ energized surges to 1200 psi, follow surges w/ air-mist, NF well for 30 min, spray FW across mufflers when surges are released to keep dust down.

Rosa Unit #350A – Page 3

06-15-2009

Recap: FB & air hand cavitate well w/ energized surges, spray FW across mufflers when surges are released. Ck & SU equip, 4 hr SICP 945 psi, bleed well down @ blooie line to pit. PU DP sgls ck for fill, tagged fill @ 3500', 200' of bridges/fill, break circ w/ 10 bph air-mist w/ 1 gal foamer, 1/2 gal shale treat, 1/2 gal corrosion inhibitor per 20 bbls prod wtr. Tight spot @ 3530' to 3580', work pipe, CO to TD @ 3660', returned hvy fine to 1/4" coal, shale mix, & hvy black wtr. Run sweeps as needed. Blow well dry w/ air, LD 8 jts DP, pull into 7" csg, hang back swivel. Flow well for 1 hr get air out of well for Pitot. FLOW TEST: Duration = 1 hr, Test Method = Pitot, MCF/D = 309 mcf/d, Csg PSI = 4 oz, Tbg PSI = 0 psi, Gas Type = dry, Gas Disposition = non-flaring, Choke Size = 2" open line. Turn well over to FB & air hand for cavitation of well w/ NS, spray FW across mufflers when surges are released.

06-16-2009

Recap: FB & air hand cavitate well w/ NS, spray FW across mufflers when surges are released. Ck & SU equip, 4 hr SICP 500 psi, bleed well down @ blooie line to pit. PU DP sgls ck for fill, tagged fill @ 3440', 220' bridge/fill, break circ w/ 10 bph air-mist w/ 1 gal foamer, 1/2 gal shale treat, & 1/2 gal corrosion inhibitor, per 20 bbls produced wtr, tight spot @ 3460' to 3500' break circ w/ air-mist CO to TD @ 3660', returned hvy fine coal, shale mix & hvy black wtr, run sweeps as needed. LD 8 jts DP, pull into 7" csg, hang back swivel. Secure well, turn over to FB & air hand for cavitation of well w/ NS, spray FW across mufflers when surges are released.

06-17-2009

Recap: Flow back & air hand cavitate well w/ natural surges, spray fresh water across mufflers when surges are released. -- Travel to location from Aztec Yard to Rosa 350A. -- SM w/ all personnel on location. Check & start equipment. 4 hr SICP 500 PSI, bleed well down @ 2" line to pit. -- PU DP singles check for fill, tagged fill @ 3449', 211' of bridges/fill, break circ w/ 13 bph air-mist w/ 3 gal foamer, 1/2 gal shale treat & 1/2 gal corrosion inhibitor per 20 bbls produced water. Tight spot @ 3449' to 3570', work pipe, cleanout to TD @ 3660', returned hvy fine to 1/4" coal, shale mix, & hvy black wtr. Run sweeps as needed. -- Blow well dry w/ air. LD 8 Jts DP, pull into 7" csg, hang back swivel, flow well for 1 hr get air out of well for Pitot. -- FLOW TEST: Duration = 1hr, Test Method = Pitot, MCF/D = 309mcf/d, Csg PSI = 4oz, Tbg PSI = 0 psi, Gas Type = Dry, Gas Disposition = Non-flaring, Choke Size = 2" open line. -- Turn well over to Flow back & air hand to flow well overnight.

06-18-2009

Recap: Flow back & air hand flow well overnight. -- Travel to location from Aztec Yard to Rosa 350A. -- SM w/ all personnel on location. Check & start equipment. -- PU DP Singles check for fill, tagged fill @ 3440', 220' bridge/fill, break circ w/ 10 bph air-mist w/ 1 gal foamer, 1/2 gal shale treat, 1/2 gal corrosion inhibitor, per 20 bbls produced wtr, tight spot @ 3440', to 3500', break circ w/ air-mist cleaned out to TD @ 3660', returned hvy fine coal, shale mix, & hvy blk wtr. Run sweeps as needed. -- LD 8 Jts DP, pull into 7" csg, hang back swivel. Secure well. -- Turn well over to flow back & air hand, to flow well overnight.

06-19-2009

Recap: Flow back & air hand flow well overnight. -- Travel to location from Aztec Yard to Rosa 350A. -- SM w/ all personnel on location. Check & start equipment. -- PU DP singles check for fill, break circ w/ 10 bph air-mist w/ 1 gal foamer, 1.2 gal shale treat, 1/2 gal corrosion inhibitor, per 20 bbls prod. water. Tight spot @ 3500' to 3660', tight coming down, free coming up, returned hvy fine coal shale mix, & hvy black wtr. -- TOOH w/ 8 Jts DP into 7" csg, TIH w/ 8 Jts DP to TD pipe was free. -- Blow well dry w/ air. LD 8 Jts DP, pull into 7" csg, hang back swivel. Secure well. -- Turn well over to air hand to flow well over night.

06-20-2009

Recap: Air hand flow well to atmosphere. -- SM w/ rig crew & air hand, check & start equipment. -- PU & MU DP sgls, check for fill, well was free to TD 3660'. -- LD 12 Jts DP sgls, pull into 7" csg, hang back 3.5 PS, Stand back 48 stands DP, & 4 stands of Drill Collers. -- RU Casing equipment, PU, MU and RIW as Follows - LA Set shoe, 9 Jts 5-1/2" 17# N-80 EUE csg (352.42), H-latch, jTIW setting tool. -- RIW w/ liner assembly & 99 Jts AOH DP. PU 7 DP sgls run in slow, tag @ 3520' circ rotate to 3660'. Release liner @ 3660', PBTD @ 3660'. 7" shoe @ 3433', Liner top @ 3304', Liner bottom @ 3660', 129' overlap. -- RD & LD 3.5 PS. TOOH & LD DP. -- Secure well & Equipment. SIFW. No Accidents Reported.

06-22-2009

Recap: Travel from Aztec Yard to Rosa 350A. -- SM W/ all personnel on location. Check and Start Equipment. SICP 1050 PSI. -- Bleed down well to Pit @ 2" open line. LD Drill Collers. RD 3.5 PS, send to AWS 656. RD all DP/DC equipment. Clean up location. Wash trees w/ Fresh Water. -- Secure well. SDFN. No Accidents Reported. Next Day Proposed Operations: Perf. Coal Zone w/ Wireline. TIH w/ Production Tbg, CO w/ air-mist

06-23-2009

Recap: Crew travel to location from Aztec Yard to Rosa Unit 350A. -- SICP 1050 PSI. Bleed off down 2" line to pit. SM w/ crew, air hand, and Basin Wireline, RU Wireline. -- TIH w/ wireline guns and perforate 5-1/2" liner w/ 11 grams charge, 0.53 inch holes, 4 shots per foot, as follows bottom to top, 3558' to 3578', (20'), 80 shots, 3465' to 3501', (35'), 140 shots, 3440' to 3460', (20'), 80 shots, total feet 75', and 300 shots. -- RD wireline, RU Tubing equipment. -- Tally, TIW w/ 2-7/8" Tbg as follows - 2-7/8" half mule shoe, String float, 113 Jts 2-7/8" 6.5#, J-55, EUE 8RD Tbg. -- Tie air onto tbg string, circulate well until returns are clean. -- TOOH w/ Tbg stand back tbg. -- TIH w/ Mud Anchor, Screen, F-Nipple, 2-7/8" 6.5# J-55, EUE 8RD Production Tbg as follows: 1- 2-7/8" 6.5#, J-55, EUE 8RD Mud Anchor & Screen, 1- 2-7/8" X 2.28 X2-7/8" "F"-Nipple, 1- 10' 2-7/8" 6.5# J-55 EUE 8RD Pup Jt, 110 - 2-7/8", 6.5#, J-55 EUE 8RD Prod. Tbg. EOT @ 3597', - 2.28 I.D. F-Nipple @ 3571'. -- Secure well & Equipment, SIFN, No Accidents Reported. Next Day's Proposed Operations: Test Tbg, Land Well, NU BOP's, TIH w/ Rods.

06-24-2009

Recap: Crew travel to location from Aztec Yard to Rosa Unit 350A. -- SICP 1050 PSI. Bleed off down 2" line to pit. SM w/ all Personnel. -- Test Tbg to 1000 PSI, Test good. TIH w. sand line fish standing valve. Air hands RD equipment. -- TOOH w/ 3 stands. Run 200' Chem. Cap String. PU Tbg Hanger and land well as follows - Mud Anchor, Screen, F-Nipple, 2-7/8" 6.5# J-55, EUE 8RD Production Tbg as follows: 1- 2-7/8" 6.5#, J-55, EUE 8RD Mud Anchor & Screen, 1- 2-7/8" X 2.28 X2-7/8" "F"-Nipple, 1- 10' 2-7/8" 6.5# J-55 EUE 8RD Pup Jt, 110 - 2-7/8", 6.5#, J-55 EUE 8RD Prod. Tbg. EOT @ 3597', - 2.28 I.D. F-Nipple @ 3571'. -- RD Floor and NU BOP's. MU SR head. Test Head, Test good per Antelope. -- Haul Equipment no longer needed to town, Triple S Rig Up Trucks Loading equipment. -- PU MU & RIW as follows, 1" X6' gas anchor, 2-1/2" X 1-1/4" X 8 X 12 RHAC pump, 6 - 1-1/2" API Grade "C" sinker bars, 136 - 3/4" Type 54, API Grade "D" rods, 1 - 4' x 3/4" Pony Rod & 1-1/4" X 22' Polished Rod w/ 10' X 1-1/2" liner. -- Install stuffing box, seat pump & space out pump, load tbg w/ production water, test tbg & pump to 500 Psig, release pressure, Stroke pump to 500 psig. Test good. -- Secure well & Equipment, SIFN, No Accidents Reported. FINAL REPORT Next Day's Proposed Operations: Drop Derrick, Move Rig to New location Rosa 378.

**ROSA UNIT #350A
BASIN FRUITLAND COAL**

Surface Location:

615' FNL and 15' FWL
NW/4 NW/4 Sec 10 (D), T31N, R5W
Rio Arriba, NM

Bottom Hole Location:

710' FSNL and 722' FWL
NW/4 NW/4 Sec 10 (D), T31N, R5W
Rio Arriba, NM

Elevation: 6683' GR
API # 30-039-29789

Spud: 07/31/08

Completed: 09/05/08

Cavitation: 06/24/09

1st Delivered: 09/06/08

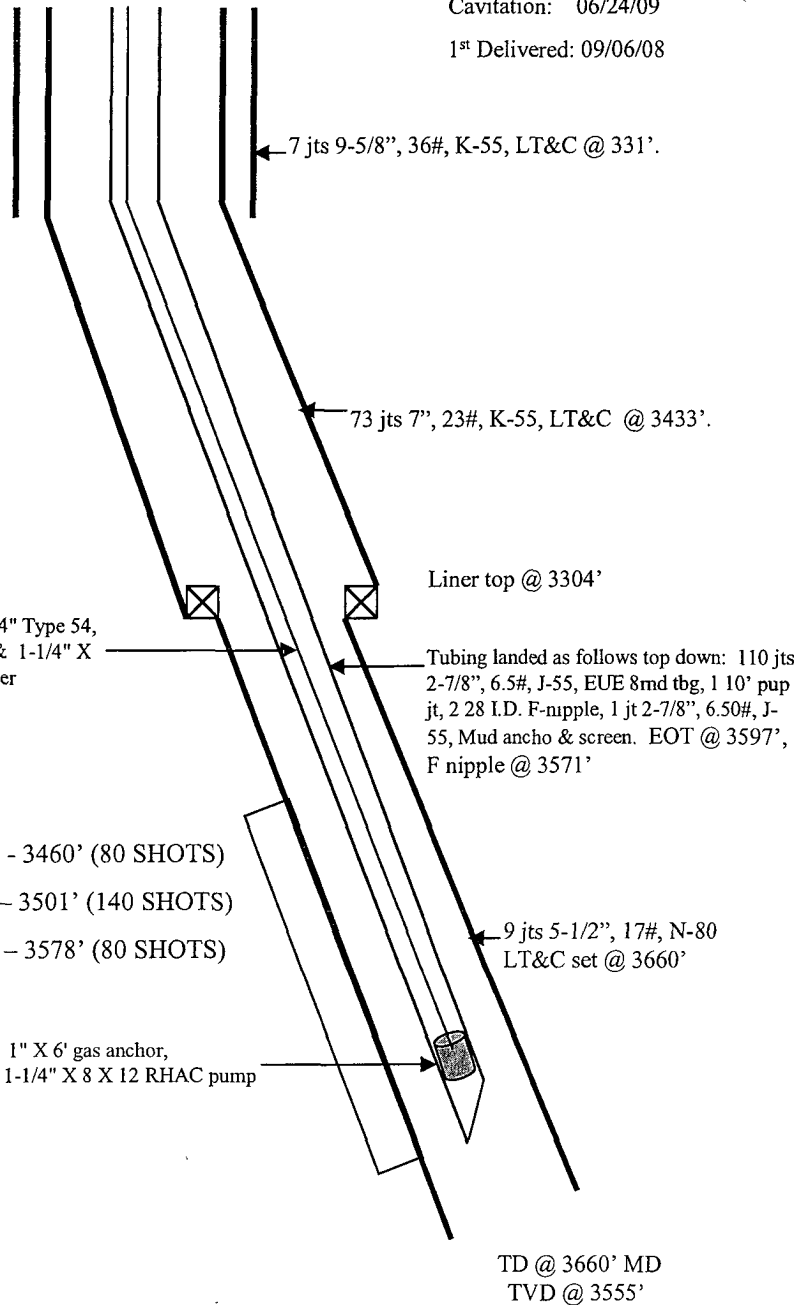
<u>Top</u>	MD	TVD
Ojo Alamo	2,861'	2,807'
Kirtland	2,978'	2,917'
Fruitland	3,371'	3,277'

6 - 1-1/2" API Grade "C" sinker bars, 136 - 3/4" Type 54,
API Grade "D" rods, 1 - 4' X 3/4" Pony Rod & 1-1/4" X
22' Polished Rod w/ 10' X 1-1/2" liner

0.53", 4SPF
300 holes total
3440' - 3460' (80 SHOTS)
3465' - 3501' (140 SHOTS)
3558' - 3578' (80 SHOTS)

1" X 6' gas anchor,
2-1/2" X 1-1/4" X 8 X 12 RHAC pump

Open hole from 6-1/4" to 9-1/2"
from 3,440' to 3,660'



Hole Size	Casing	Cement	Volume	Top of Cmt
12-1/4"	9-5/8", 36#	165 sxs	226 cu.ft.	Surface
8-3/4"	7", 23#	533 sxs	1060 cu.ft.	Surface
6-1/4"	5-1/2", 17#	Did Not Cmt		