

UNITED STATES  
DEPARTMENT OF THE INTERIOR  
BUREAU OF LAND MANAGEMENT

RECEIVED

(See other instructions on  
reverse side)  
JUL 16 2009

FORM APPROVED  
OMB NO 1004-0137  
Expires February 28, 1995

WELL COMPLETION OR RECOMPLETION REPORT AND LOG

Bureau of Land Management  
Farmington Field Office

5 LEASE DESIGNATION AND LEASE NO  
NMSF-078764

6 IF INDIAN, ALLOTTEE OR

7 UNIT AGREEMENT NAME  
Rosa Unit

Report to lease

8 FARM OR LEASE NAME, WELL NO  
Rosa Unit #162C

9 API WELL NO  
30-039-30719-0001

10 FIELD AND POOL, OR WILDCAT  
Basin Dakota

11 SEC, T, R, M OR BLOCK AND  
SURVEY OR AREA  
Sec 30, T31N, R5W

12 COUNTY OR  
Rio Arriba

13 STATE  
New Mexico

19 ELEVATION CASINGHEAD

ROTARY TOOLS  
x

CABLE TOOLS

25 WAS DIRECTIONAL SURVEY MADE  
No

27 WAS WELL CORED  
No

1a TYPE OF WELL ☐ OIL WELL ☒ GAS WELL ☐ DRY ☐ OTHER

b TYPE OF COMPLETION  
☒ NEW WELL ☐ WORKOVER ☐ DEEPEN ☐ PLUG BACK ☐ DIFF RESVR ☐ OTHER

2 NAME OF OPERATOR  
WILLIAMS PRODUCTION COMPANY

3 ADDRESS AND TELEPHONE NO  
P.O. Box 640, Aztec, NM 87410 (505) 634-4208

4 LOCATION OF WELL (Report location clearly and in accordance with any State requirements)\*  
At Surface 935' FSL & 2200' FEL, sec 30, T31N, R5W  
At top production interval reported below. Same  
At total depth Same

15 DATE  
SPUDDED  
5-8-09

16 DATE T D  
REACHED  
5-16-09

17 DATE COMPLETED (READY TO PRODUCE)  
7-13-09

14 PERMIT NO  
DATE ISSUED  
6432' GR

20 TOTAL DEPTH, MD & TVD  
8044'

21 PLUG, BACK T D, MD & TVD  
8037' MD

22 IF MULTICOMP,  
HOW MANY  
3\*

23 INTERVALS  
DRILLED BY

24 PRODUCING INTERVAL(S), OF THIS COMPLETION - TOP, BOTTOM, NAME (MD AND TVD)\*  
BASIN DAKOTA 7922' - 8019' MD - MV/DK commingled per AZT-3182 - \* Mancos to be completed at later date

26 TYPE ELECTRIC AND OTHER LOGS RUN

Array Induction, Compensated GR-Density-Neutron, Temperature, Ultra Sonic Gas Detector and CBL

28 CASING REPORT (Report all strings set in well)

CASING SIZE/GRADE	WEIGHT, LB/FT	DEPTH SET (MD)	HOLE SIZE	TOP OF CEMENT, CEMENTING RECORD	AMOUNT PULLED
10-3/4", J-55	40 5#	322'	14-3/4"	290 SX - SURFACE	
7-5/8", J-55	26.4#	3750'	9-7/8"	630 SX - SURFACE	
5-1/2", N-80	17 0#	8044'	6-3/4"	335 SX - 3756' (CBL) ✓	

29 LINER RECORD

SIZE	TOP (MD)	BOTTOM (MD)	SACKS CEMENT*	SCREEN (MD)	SIZE	DEPTH SET (MD)	PACKER SET (MD)
					2 3/8", 4.7#, J-55, EUE 8rd	7991	none

31 PERFORATION RECORD (Interval, size, and number)

Dakota 7922-8019' Total of 78, 0 3/4" holes ✓

32 ACID, SHOT, FRACTURE, CEMENT SQUEEZE, ETC

DEPTH INTERVAL (MD) AMOUNT AND KIND OF MATERIAL USED

7922' - 8019'

Fraced with 5005# 100 mesh BASF followed with 110,867# 40/70 mesh Ottawa sand ✓

RCVD JUL 17 '09

OIL CONS. DIV.

33 PRODUCTION NOTE: Dakota to be commingled with Mesa Verde - AZT-3182

DIST. 3

DATE OF FIRST PRODUCTION		PRODUCTION METHOD (Flowing, gas lift, pumping-size and type of pump)				WELL STATUS (PRODUCING OR SI)	
		Flowing				SI - waiting on tie-in ✓	
DATE OF TEST	TESTED	CHOKE SIZE	PROD'N FOR TEST PERIOD	OIL - BBL	GAS - MCF	WATER - BBL	GAS-OIL RATIO
6-11-09	1 hr	2"					
FLOW TBG PRESS	CASING PRESSURE	CALCULATED 24-HOUR RATE		OIL - BBL	GAS - MCF	WATER - BBL	OIL GRAVITY-API (CORR)
0	2 lb.				869 mcf/d ✓		

34 DISPOSITION OF GAS (Sold, used for fuel, vented, etc) TO BE SOLD

TEST WITNESSED BY Buddy Banks

35 LIST OF ATTACHMENTS SUMMARY OF POROUS ZONES, WELLBORE DIAGRAM

36 I hereby certify that the foregoing and attached information is complete and correct as determined from all available records

SIGNED Larry Higgins TITLE Drlg COM DATE 7-13-09

NMOC

8/21

ACCEPTED FOR RECORD

JUL 16 2009

FARMINGTON FIELD OFFICE  
BY T. Saliers

37 SUMMARY OF POROUS ZONES (Show all important zones of porosity and contents thereof, cored intervals, and all drill-stem, tests, including depth interval tested, cushion used, time tool open, flowing and shut-in pressures, and recoveries).					38 GEOLOGIC MARKERS			
FORMATION	TOP	BOTTOM	DESCRIPTION, CONTENTS, ETC		NAME	TOP		
						NAME	MEASURED DEPTH	TRUE VERTICAL DEPTH
						PICTURED CLIFFS	3266'	
						CLIFFHOUSE	5443'	
						MENEFEE	5495'	
						POINT LOOKOUT	5669'	
						MANCOS	6160'	
						DAKOTA	7918'	

**ROSA UNIT #162C**  
**BLANCO MV/BASIN MANCOS/BASIN DK**

**Location:** 935' FSL & 2200' FEL  
 SW/4 SE/4 Section 30 (O), T31N, R05W  
 Rio Arriba Co, NM

**Elevation:** 6432' GR  
**API #:** 30-039-30719

Spud Date 5-8-09  
 Completed 7-10-09  
 1<sup>st</sup> Delivered 00-00-00 MV  
 00-00-00 MC  
 00-00-00DK

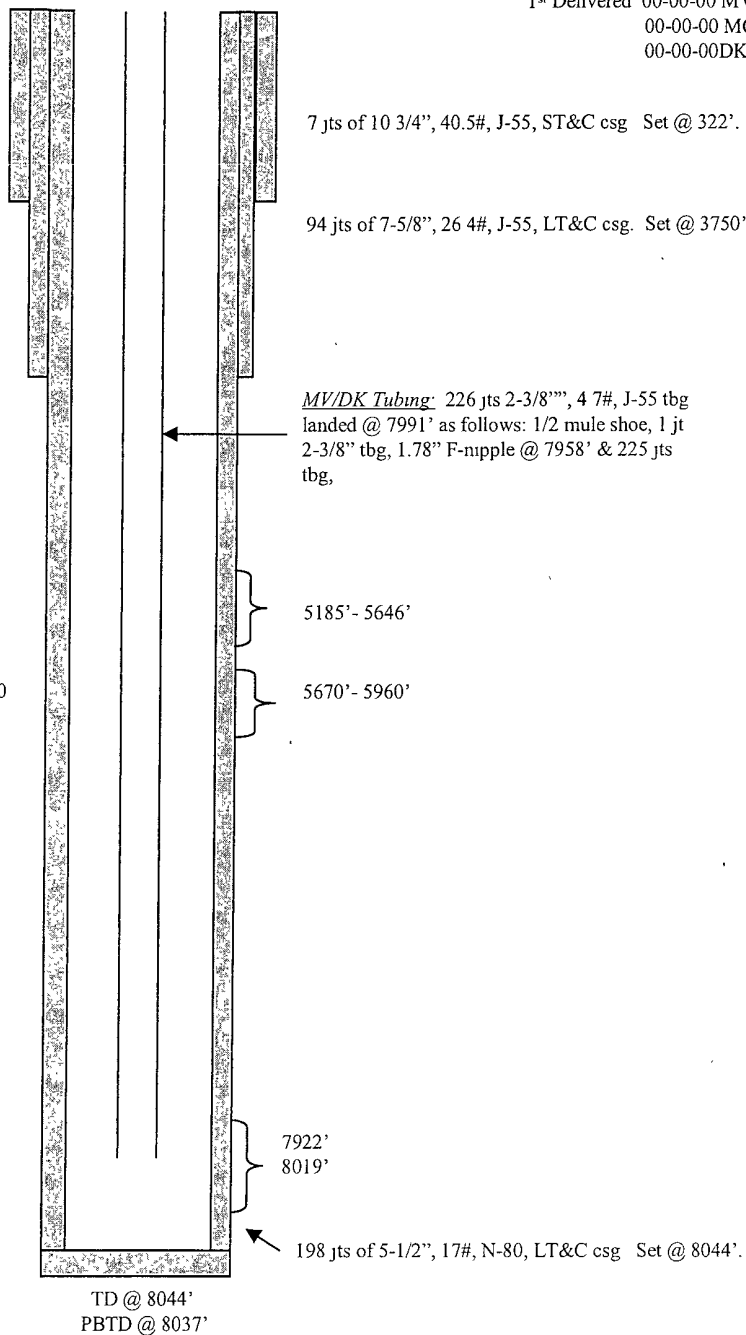
<u>Tops</u>	<u>Depth</u>
Kirtland	2664'
Pictured Cliffs	3266'
Cliff House	5443'
Menefee	5495'
Point Lookout	5669'
Mancos	6160'
Dakota	7918'

CH/MEN: 5185'-5646' (45, 0.34" holes) Frac with 6849#  
 20/40 BASF followed with 57603# 20/40 BASF

PLO: 5670'-5960' (59, 0.34" holes) Frac with 6849# 20/40  
 BASF followed with 101,898# 20/40 BASF

**NOTE:** Mesa Verde and Dakota only  
 Completed at this time. Mancos will  
 be completed at a later date

Dakota: 7922'-8019' (78, 0.34" holes) Frac w/ 5005#  
 100 mesh BASF followed with 110,867# 40/70 mesh  
 Ottawa sand



HOLE SIZE	CASING	CEMENT	CU. FT.	CMT TOP
14 3/4"	10 3/4", 40.5#	290 sxs	521 cu.ft.	surface
9 7/8"	7 5/8", 26.4#	630 sxs	1561 cu.ft.	surface
6 3/4"	5 1/2", 17#	335 sxs	468 cu.ft.	3756' - CBL

In Lieu of  
Form 3160-4  
(July 1992)

UNITED STATES  
DEPARTMENT OF THE INTERIOR  
BUREAU OF LAND MANAGEMENT

SUBMIT IN  
DUPLICATE

FORM APPROVED  
OMB NO 1004-0137  
Expires: February 28, 1995

RECEIVED

JUL 13 2009

(See other instructions on  
reverse side)

Bureau of Land Management  
Farmington Field Office

WELL COMPLETION OR RECOMPLETION REPORT AND LOG\*

1a	TYPE OF WELL	1 OIL WELL	<input checked="" type="checkbox"/> GAS WELL	DRY	OTHER		
b	TYPE OF COMPLETION	<input checked="" type="checkbox"/> NEW WELL	WORKOVER	DEEPEN	PLUG BACK	DIFF RESVR	OTHER
2	NAME OF OPERATOR					WILLIAMS PRODUCTION COMPANY	
3	ADDRESS AND TELEPHONE NO					P O Box 640, Aztec, NM 87410 (505) 634-4208	
4	LOCATION OF WELL (Report location clearly and in accordance with any State requirements)* At Surface: 935' FSL & 2200' FEL, sec 30, T31N, R5W At top production interval reported below: Same At total depth: Same					8 FARM OR LEASE NAME, WELL NO Rosa Unit #162C	
					9 API WELL NO 30-039-30719-0002		
					10 FIELD AND POOL, OR WILDCAT Blanco Mesa Verde		
					11 SEC., T., R., M. OR BLOCK AND SURVEY OR AREA Sec 30, T31N, R5W		
					12 COUNTY OR Rio Arriba		
					13 STATE New Mexico		
15	DATE SPUDDED 5-8-09	16	DATE T D REACHED 5-16-09	17	DATE COMPLETED (READY TO PRODUCE) 7-10-09	18	ELEVATIONS (DK, RKB, RT, GR, ETC)* 6432' GR
20	TOTAL DEPTH, MD & TVD 8044'		21	PLUG, BACK T D, MD & TVD 8037' MD		22	IF MULTICOMP, HOW MANY 3*
					23	INTERVALS DRILLED BY	
24					25		
PRODUCING INTERVAL(S), OF THIS COMPLETION - TOP, BOTTOM, NAME (MD AND TVD)* Blanco Mesa Verde 5185' - 5960' MD - MV/DK commingled per AZT-3182 - * Mancos to be completed at later date					WAS DIRECTIONAL SURVEY MADE No		
26					27		
TYPE ELECTRIC AND OTHER LOGS RUN Array Induction, Compensated GR-Density-Neutron, Temperature, Ultra Sonic Gas Detector and CBL					WAS WELL CORED No		

28 CASING REPORT (Report all strings set in well)						
CASING SIZE/GRADE	WEIGHT, LB/FT	DEPTH SET (MD)	HOLE SIZE	TOP OF CEMENT, CEMENTING RECORD	AMOUNT PULLED	
10-3/4", J-55	40 5#	322'	14-3/4"	290 SX - SURFACE		
7-5/8", J-55	26 4#	3750'	9-7/8"	630 SX - SURFACE		
5-1/2", N-80	17 0#	8044'	6-3/4"	335 SX - 3756' (CBL) ✓		

29 LINER RECORD					30 TUBING RECORD		
SIZE	TOP (MD)	BOTTOM (MD)	SACKS CEMENT*	SCREEN (MD)	SIZE	DEPTH SET (MD)	PACKER SET (MD)
					2 3/5", 4.7#, J-55, EUE 8rd	7991	none

31 PERFORATION RECORD (Interval, size, and number)			32 ACID, SHOT, FRACTURE, CEMENT SQUEEZE, ETC			
CH/MEN 5185' - 5646' Total of 45, 0 34" holes			DEPTH INTERVAL (MD)	AMOUNT AND KIND OF MATERIAL USED		
			5185' - 5646'	Fraced with 6849# 20/40 mesh BASF followed with 57,603# 20/40 BASF ✓		
			5670' - 5960'	Fraced with 6849# 20/40 mesh BASF followed with 101,898# 20/40 BASF ✓		

33 PRODUCTION NOTE. Mesa Verde to be commingled with Dakota - AZT-3182

DATE OF FIRST PRODUCTION		PRODUCTION METHOD (Flowing, gas lift, pumping-size and type of pump)				WELL STATUS (PRODUCING OR SI)	
		Flowing				SI - waiting on tie-in ✓	
DATE OF TEST	TESTED	CHOKE SIZE	PROD'N FOR TEST PERIOD	OIL - BBL	GAS - MCF	WATER - BBL	GAS-OIL RATIO
6-23-09	1 hr	2"					
FLOW TBG PRESS	CASING PRESSURE	CALCULATED 24-HOUR RATE		OIL - BBL	GAS - MCF	WATER - BBL	OIL GRAVITY-API (CORR)
0	22 lb.				3042 mcf/d ✓		

34 DISPOSITION OF GAS (Sold, used for fuel, vented, etc) TO BE SOLD

TEST WITNESSED BY: Buddy Banks

35 LIST OF ATTACHMENTS SUMMARY OF POROUS ZONES, WELLBORE DIAGRAM

36 I hereby certify that the foregoing and attached information is complete and correct as determined from all available records

SIGNED Larry Haggard NMOC DIST. Drlg COM DATE 7-13-09

ACCEPTED FOR RECORD

JUL 16 2009

FARMINGTON FIELD OFFICE  
BY T. Salvo

7/21

37 SUMMARY OF POROUS ZONES (Show all important zones of porosity and contents thereof, cored intervals, and all drill-stem tests, including depth interval tested, cushion used, time tool open, flowing and shut-in pressures, and recoveries)

38 GEOLOGIC MARKERS

FORMATION	TOP	BOTTOM	DESCRIPTION, CONTENTS, ETC		NAME	TOP		
						NAME	MEASURED DEPTH	TRUE VERTICAL DEPTH
						PICTURED CLIFFS	3266'	
						CLIFFHOUSE	5443'	
						MENEFEE	5495'	
						POINT LOOKOUT	5669'	
						MANCOS	6160'	
						DAKOTA	7918'	

**ROSA UNIT #162C**  
**BLANCO MV/BASIN MANCOS/BASIN DK**

**Location:** 935' FSL & 2200' FEL  
 SW/4 SE/4 Section 30 (O), T31N, R05W  
 Rio Arriba Co., NM

**Elevation:** 6432' GR  
**API #:** 30-039-30719

Spud Date 5-8-09  
 Completed 7-10-09  
 1<sup>st</sup> Delivered 00-00-00 MV  
 00-00-00 MC  
 00-00-00DK

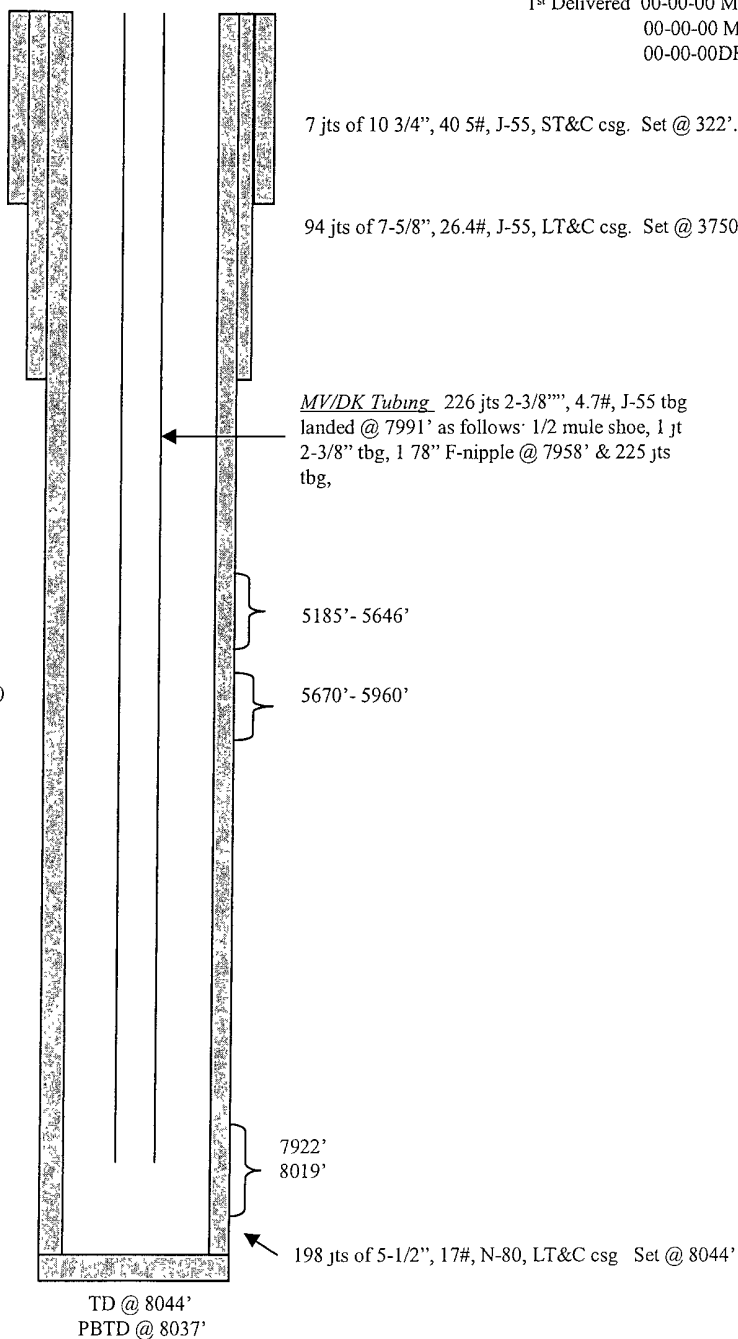
<u>Tops</u>	<u>Depth</u>
Kirtland	2664'
Pictured Cliffs	3266'
Cliff House	5443'
Menefee	5495'
Point Lookout	5669'
Mancos	6160'
Dakota	7918'

CH/MEN 5185'-5646' (45, 0 3/4" holes) Frac with 6849#  
 20/40 BASF followed with 57603# 20/40 BASF

P.L.O. 5670'-5960' (59, 0.34" holes) Frac with 6849# 20/40  
 BASF followed with 101,898# 20/40 BASF

**NOTE:** Mesa Verde and Dakota only  
 Completed at this time. Mancos will  
 be completed at a later date

Dakota 7922'-8019' (78, 0 3/4" holes) Frac w/ 5005#  
 100 mesh BASF followed with 110,867# 40/70 mesh  
 Ottawa sand



HOLE SIZE	CASING	CEMENT	CU. FT.	CMT TOP
14 3/4"	10 3/4", 40.5#	290 sxs	521 cu.ft.	surface
9 7/8"	7 5/8", 26.4#	630 sxs	1561 cu.ft.	surface
6 3/4"	5 1/2", 17#	335 sxs	468 cu.ft.	3756' - CBL