

District I
1625 N French Dr., Hobbs, NM 88240
District II
1301 W Grand Avenue, Artesia, NM 88210
District III
1000 Rio Brazos Road, Aztec, NM 87410
District IV
1220 S. St. Francis Dr., Santa Fe, NM 87505

State of New Mexico
Energy Minerals and Natural Resources

Oil Conservation Division
1220 South St. Francis Dr.
Santa Fe, NM 87505

Su

APPLICATION FOR PERMIT TO DRILL, RE-ENTER, DEEPEN, PLUGBACK, OR ADD A ZONE

¹ Operator Name and Address Williams Production Company, LLC P.O. Box 640 Aztec, NM 87410-0640		² OGRID Number 120782	
³ Property Code 17033		⁴ API Number 30 - 039-30795	
⁵ Property Name Rosa Unit		⁶ Well No 181D	
⁹ Proposed Pool 1 Blanco Mesa Verde		¹⁰ Proposed Pool 3 Basin Dakota	

⁷ Surface Location

UL or lot no	Section	Township	Range	Lot Idn	Feet from the	North/South line	Feet from the	East/West line	County
A	15	31N	6W		1230	North	730	East	Rio Arriba

⁸ Proposed Bottom Hole Location If Different From Surface

UL or lot no	Section	Township	Range	Lot Idn	Feet from the	North/South line	Feet from the	East/West line	County
O	10	31N	6W		100	South	1400	LineEast	Rio Arriba

Additional Well Information

¹¹ Work Type Code N	¹² Well Type Code G	¹³ Cable/Rotary C	¹⁴ Lease Type Code P	¹⁵ Ground Level Elevation 6268'
¹⁶ Multiple Yes	¹⁷ Proposed Depth 8511'	¹⁸ Formation Basin Dakota	¹⁹ Contractor	²⁰ Spud Date 8-10-09

²¹ Proposed Casing and Cement Program

Hole Size	Casing Size	Casing weight/foot	Setting Depth	Sacks of Cement	Estimated TOC
14.750"	10.750"	40.5#	300'	290	Surface
9.875"	7.625"	26.4#	3971'	625	Surface
6.750"	5.500"	17.0#	8511'	375	3821'

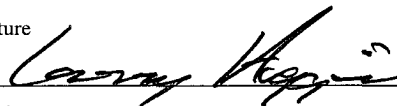
²² Describe the proposed program. If this application is to DEEPEN or PLUG BACK, give the data on the present productive zone and proposed new productive zone
Describe the blowout prevention program, if any Use additional sheets if necessary.

This well will be drilled and completed in the Basin Dakota, Basin Mancos and Blanco Mesa Verde formations.
This well will be drilled with fresh water to intermediate casing depth and then drilled to TD with air.
A 2000# Double Ram BOP system will be used

RCVD JUL 21 '09
OIL CONS. DIV.
DIST. 3

²³ I hereby certify that the information given above is true and complete to the best of my knowledge and belief.

Signature



Printed name.

Larry Higgins

Title: Drilling COM

E-mail Address:

Larry.higgins@williams.com

Date:

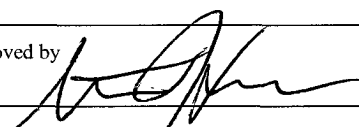
7-20-09

Phone:

(505) 634-4208

OIL CONSERVATION DIVISION

Approved by



Title:

DEPUTY OIL & GAS INSPECTOR, DIST. 3

Approval Date:

JUL 27 2009

Expiration Date:

JUL 27 2011

Conditions of Approval Attached ☐

Hold C104

for Directional Survey
and "As Drilled" plat

JUL 27 2009



NOTIFY AZTEC OCD 24 HRS.
PRIOR TO CASING & CEMENT

HOLD C104 FOR

Mancos &
Dakota
NSL

District I
1625 N French Dr., Hobbs, NM 88240

District II
1301 W Grand Avenue, Artesia, NM 88210

District III
1000 Rio Brazos Rd., Aztec, NM 87410

District IV
1220 S. St Francis Dr., Santa Fe, NM 87505

State of New Mexico
Energy, Minerals & Natural Resources Department

OIL CONSERVATION DIVISION
1220 South St. Francis Dr.
Santa Fe, NM 87505

Form C-102
Revised October 12, 2005
Instructions on back
Submit to Appropriate District Office
State Lease - 4 Copies
Fee Lease - 3 Copies

☐ AMENDED REPORT

WELL LOCATION AND ACREAGE DEDICATION PLAT

¹ API Number 30-039-30795	² Pool Code 97232 / 72319 / 71599	³ Pool Name p.a. BASIN MANCOS / BLANCO MESAVERDE / BASIN DAKOTA
⁴ Property Code 17033	⁵ Property Name ROSA UNIT	⁶ Well Number 181D
⁷ OGRID No. 120782	⁸ Operator Name WILLIAMS PRODUCTION COMPANY	⁹ Elevation 6268'

¹⁰ Surface Location

UL or lot no	Section	Township	Range	Lot Idn	Feet from the	North/South line	Feet from the	East/West line	County
A	15	31N	6W		1230	NORTH	730	EAST	RIO ARriba

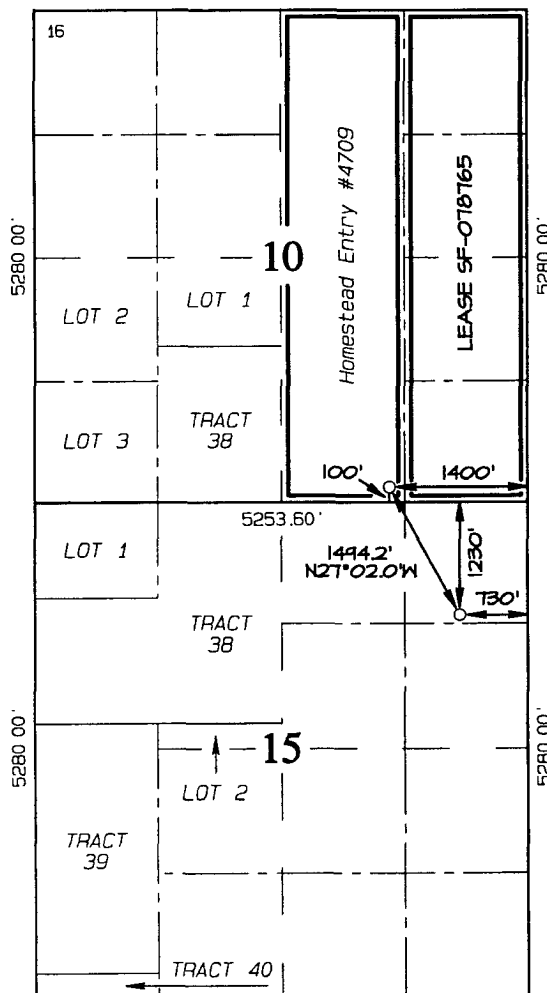
¹¹ Bottom Hole Location If Different From Surface

UL or lot no	Section	Township	Range	Lot Idn	Feet from the	North/South line	Feet from the	East/West line	County
0	10	31N	6W		100	SOUTH	1400	EAST	RIO ARriba

¹² Dedicated Acres 320.0 Acres E/2 Section 10	¹³ Joint or Infill	¹⁴ Consolidation Code	¹⁵ Order No
--	-------------------------------	----------------------------------	------------------------

NO ALLOWABLE WILL BE ASSIGNED TO THIS COMPLETION UNTIL ALL INTERESTS HAVE BEEN CONSOLIDATED OR A NON-STANDARD UNIT HAS BEEN APPROVED BY THE DIVISION

5252.28'



BOTTOM-HOLE
LAT: 36.90720°N
LONG: 107.44602°W
DATUM: NAD1983

SURFACE LOCATION
LAT: 36.90354°N
LONG: 107.44372°W
DATUM: NAD1983

¹⁷ OPERATOR CERTIFICATION

I hereby certify that the information contained herein is true and complete to the best of my knowledge and belief, and that this organization either owns a working interest or unleased mineral interest in the land including the proposed bottom-hole location or has a right to drill this well at this location pursuant to a contract with an owner of such a mineral or working interest, or to a voluntary pooling agreement or a compulsory pooling order heretofore entered by the division

Larry Higgins 7-20-09
Signature Date

LARRY HIGGINS
Printed Name

¹⁸ SURVEYOR CERTIFICATION

I hereby certify that the well location shown on this plat was plotted from field notes of actual surveys made by me or under my supervision, and that the same is true and correct to the best of my belief

Date of Survey: MAY 24, 2009

Signature and Seal of Professional Surveyor

Jason C. Edwards
Certificate Number 15269