

UNITED STATES  
DEPARTMENT OF INTERIOR  
BUREAU OF LAND MANAGEMENT

FORM APPROVED  
Budget Bureau No 1004-0135  
Expires March 31, 1993

SUNDRY NOTICE AND REPORTS ON WELLS

Do not use this form for proposals to drill or to deepen or reentry to a different reservoir. Use "APPLICATION TO DRILL" for permit for such proposals

5 Lease Designation and Serial No.  
NMSF-078764

6. If Indian, Allottee or Tribe Name

SUBMIT IN TRIPLICATE

RECEIVED

SEP 01 2009

Bureau of Land Management  
Farmington Field Office

1. Type of Well  
Oil Well ☒ Gas Well ☐ Other ☐

2 Name of Operator  
WILLIAMS PRODUCTION COMPANY

3 Address and Telephone No  
PO Box 640 Aztec, NM 87410-0640

4 Location of Well (Footage, Sec., T, R, M, or Survey Description)  
Sur. 685' FNL & 835' FEL / BHL 2340' FNL & 254' FEL Sec 20; T31N, R5W NMPM

8. Well Name and No.  
Rosa Unit #85C

API Well No  
30-039-30220

10 Field and Pool, or Exploratory Area  
BLANCO MV/BASIN MC

11 County or Parish, State  
Rio Arriba, New Mexico

CHECK APPROPRIATE BOX(s) TO INDICATE NATURE OF NOTICE, REPORT, OR OTHER DATA

TYPE OF SUBMISSION

TYPE OF ACTION

Notice of Intent

X Subsequent Report

Final Abandonment

Abandonment

Recompletion

Plugging Back

Casing Repair

Altering Casing

X Other MV/Mancos completion

Change of Plans

New Construction

Non-Routine Fracturing

Water Shut-Off

Conversion to Injection

Dispose Water

(Note: Report results of multiple completion on Well Completion or Recompletion Report and Log form )

13. Describe Proposed or Completed Operations (Clearly state all pertinent details, and give pertinent dates, including estimated date of starting any proposed work. If well is directionally drilled, give subsurface locations and measured and true vertical depths for all markers and zones pertinent to this work )\*

6-22-09 – MIRU AWS #442 for Mancos completion and testing and MV completion

6-26-09 – Set 5-1/2" CBP @ 7970'. Perf Mancos 1<sup>st</sup> stage from 7685' to 7895' with 42, 0.34" holes

6-29-09 – Frac Mancos 1<sup>st</sup> stage with 6080# 100 mesh followed with 51,120# 40/70 mesh BASF

6-30-09 thru 7-12-09 – Test Mancos 1<sup>st</sup> stage

7-13-09 – Set 5-1/2" CBP @ 7660'. Perf Mancos 2<sup>nd</sup> stage from 7445' to 7615' with 42, 0.34" holes

7-15-09 – Frac Mancos 2<sup>nd</sup> stage with 5100# 100 mesh followed with 100,000# 40/70 mesh BASF

7-16 thru 7-22-09 – Test Mancos 2<sup>nd</sup> stage

RCVD SEP 3 '09  
OIL CONS. DIV.

DIST. 3

14. I hereby certify that the foregoing is true and correct

Signed Larry Higgins  
Larry Higgins

Title Drilling C.O.M.

Date 8-31-09

ACCEPTED FOR RECORD

(This space for Federal or State office use)

Approved by \_\_\_\_\_

Title \_\_\_\_\_

Date SEP 02 2009

FARMINGTON FIELD OFFICE

Conditions of approval, if any.

Title 18 U.S.C. Section 1001, makes it a crime for any person knowingly and willfully to make to any department or agency of the United States any false, fictitious or fraudulent statements or representations as to any matter within its jurisdiction

NMOCD

**Rosa Unit #85C – Page 2**

**7-23-09** – Set 5-1/2" CBP @ 7380'. Perf Mancos 3<sup>rd</sup> stage from 7135' to 7235' with 33, 0.34" holes

**7-24-09** – Frac Mancos 3<sup>rd</sup> stage with 5700# 100 mesh followed with 101,100# 40/70 mesh BASF

**7-25 thru 7-30-09** – Test Mancos 3<sup>rd</sup> stage

**7-31-09** – Set 5-1/2" CBP @ 5950'. Shoot 3 squeeze hole @ 5850'. Set cement retainer @ 5726'

**8-1-09** – Squeeze perfs # 5850' with 150 sxs LT followed with 50 sxs Neat

**8-3-09** – DO cement & retainer @ 5726'

**8-4-09** – DO cmt & CO to top of BP @ 5950'. Run CBL under 500# pressure, TOC @ 5426'

**8-7-09** – DO BPs @ 5950' & 7380'

**8-8-09** – DO BP @ 7660'

**8-9-09** – DO BP @ 7970'

**8-11-09** – Set CBP @ 6220'. Perf Menefee with 22, 0.34" holes from 6104' to 6124'. Frac Menefee with 30,900# 20/40 mesh BASF

**8-12-09 thru 8-18-09** – Attempt to clean up Menefee. Formation too wet too produce, decision made to squeeze off.

**8-19-09** – Set cmt retainer @ 5737', squeeze 3 perfs @ 5850' and 22 perfs @ 6104' – 6124' with lead of 100 sxs class V Standard followed with tail of 100sxs class V Standard

**8-21-09** – DO cement & cement retainer @ 5737'

**8-22-09** – Pressure test casing and MV squeeze job to 500# for 30 min with no leak off

**8-23-09** – DO CBP @ 6220'

**8-24-09** - FLOW TEST: Duration = 1 hr, Test Method, choke = 250 lbs, MCF/D = 1497 MCFD, Csg Psi = , Tbg Psi = 0 psi , Gas Type = wet, Gas Disposition = non flaring, Choke Size = 1/2" choke

**8-26-09** - Land well as follows, 2-3/8" half muleshoe, 1 jt 2-3/8" J-55 tbg, 1.78 I.D. F-nipple, 143 jts 2-3/8" 4.70# J-55 EUE tbg, & 123 jts 2-3/8" 4.70# N-80 EUE tbg, EOT @ 8543' F-nipple @ 8510'

**ROSA UNIT #85C**  
**Basin MC / Basin DK**

Spud 09/12/08  
 Completed: 11/18/08  
 1<sup>st</sup> Delivery: 0/0/00

Surface Location:

685' FNL and 835' FEL  
 NE/4 NE/4 Sec 20 (A), T31N, R05W  
 Rio Arriba, NM

Bottom Hole Location:

2430' FNL and 254' FEL  
 SE/4 NE/4 Sec 20 (H), T31N, R05W  
 Rio Arriba, NM

Elevation: 6429' GR  
 API # 30-039-30220

Top	MD Depth	TVD Depth
Pictured Cliffs	3837'	3318'
Lewis	4134'	3610'
Cliffhouse Ss	6038'	5513'
Menefee	6094'	5569'
Point Lookout	6272'	5747'
Mancos	6698'	6173'
Dakota	8492'	7965'

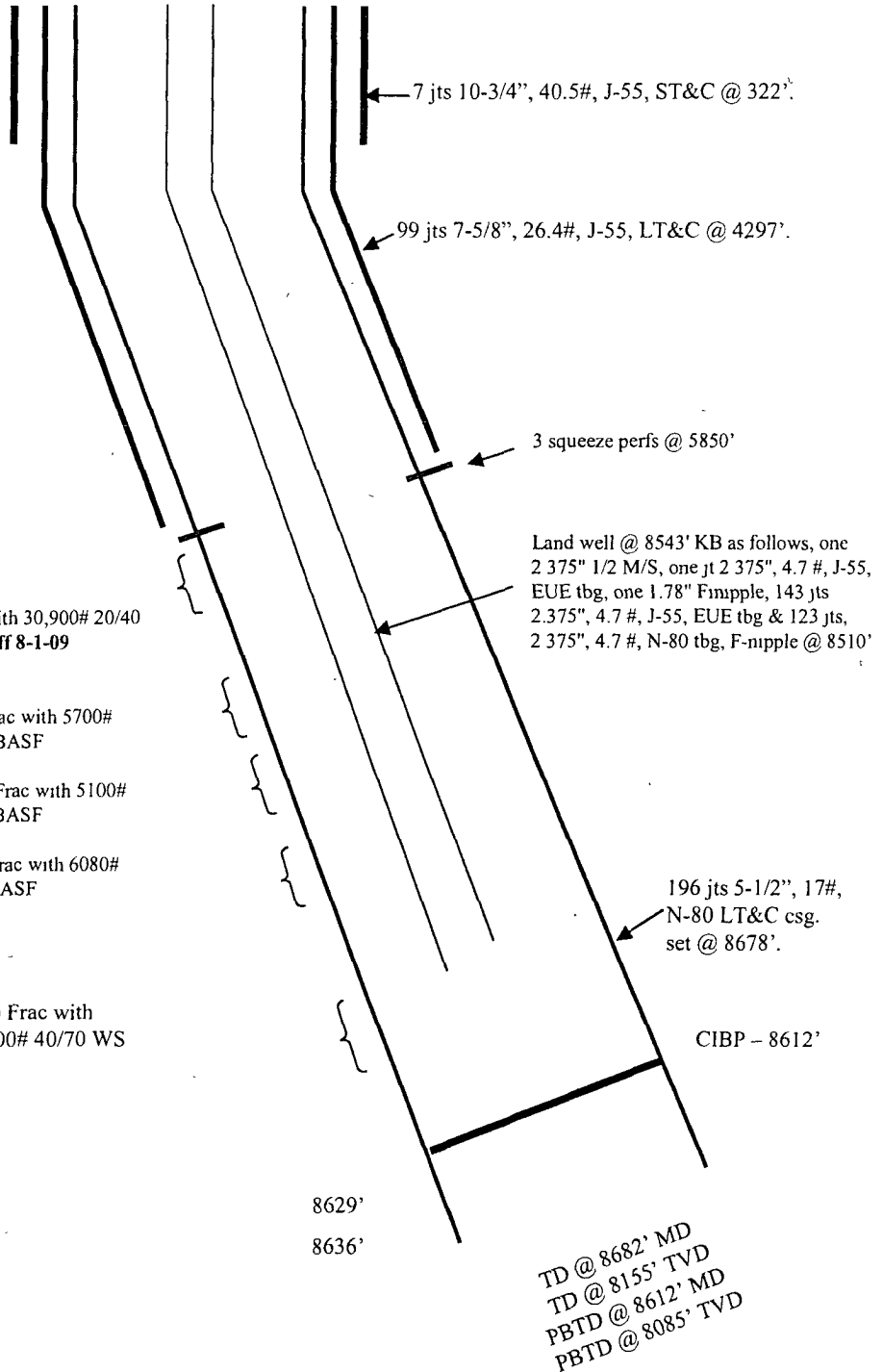
MEN: 6104'-6124' (22, 0.34" holes) Frac with 30,900# 20/40 mesh BASF -NOTE: This zone squeezed off 8-1-09

Mancos 3<sup>rd</sup>: 7135'-7235' (33, 0.34" holes) Frac with 5700# 100 mesh followed w/101,100# 40/70 mesh BASF

Mancos 2<sup>nd</sup>: 7445'-7615' (42, 0.34" holes) Frac with 5100# 100 mesh followed w/100,000# 40/70 mesh BASF

Mancos 1<sup>st</sup>: 7685'-7895' (42, 0.34" holes) Frac with 6080# 100 mesh followed w/ 51,120# 40/70 mesh BASF

Dakota: 8494' - 8596' (54, 0.34" holes) Frac with 7920# 100 mesh WS, follow with 117,100# 40/70 WS



Hole Size	Casing	Cement	Volume	Top of Cmt
14-3/4"	10-3/4", 40.5#	250 sxs	345 cu.ft.	Surface
9-7/8"	7-5/8", 26.4#	710 sxs	1426 cu.ft.	Surface
6-3/4"	5-1/2", 17#	185 sxs	456 cu.ft.	5426' CBL