

RECEIVED

In Lieu of  
Form 3160-4  
(July 1992)

UNITED STATES  
DEPARTMENT OF THE INTERIOR  
BUREAU OF LAND MANAGEMENT

SUBMIT IN  
SEP 09 2009  
ORIGINAL

FORM APPROVED  
OMB NO 1004-0137  
Expires: February 28, 1995

(See other instructions on  
reverse side)  
Bureau of Land Management  
Farmington Field Office

WELL COMPLETION OR RECOMPLETION REPORT AND LOG\*

1a. TYPE OF WELL. <input type="checkbox"/> OIL WELL <input checked="" type="checkbox"/> GAS WELL <input type="checkbox"/> DRY <input type="checkbox"/> OTHER	7. UNIT AGREEMENT NAME Rosa Unit
b. TYPE OF COMPLETION NEW WELL <input type="checkbox"/> WORKOVER <input type="checkbox"/> DEEPEN <input type="checkbox"/> PLUG BACK <input type="checkbox"/> DIFF RESVR <input checked="" type="checkbox"/> OTHER <i>Recomplete</i>	8 FARM OR LEASE NAME, WELL NO Rosa Unit #153C
2. NAME OF OPERATOR WILLIAMS PRODUCTION COMPANY	9 API WELL NO 30-039-30197
3. ADDRESS AND TELEPHONE NO P.O. Box 640, Aztec, NM 87410 (505) 634-4222	10 FIELD AND POOL, OR WILDCAT Blanco Mesaverde
4. LOCATION OF WELL (Report location clearly and in accordance with any State requirements)* At Surface: 1115' FNL & 1745' FWL, sec 17, T31N, R5W At top production interval reported below : 1676' FNL & 2222' FEL, sec 17, T31N, R5W At total depth: Same	11 SEC., T, R, M., OR BLOCK AND SURVEY OR AREA Sec 17, T31N, R5W
15 DATE SPUDDED 10-2-08	16 DATE T.D. REACHED 10-25-08
17 DATE COMPLETED (READY TO PRODUCE) 9-3-09	18. ELEVATIONS (DK, RKB, RT, GR, ETC)* 6208' GR
20 TOTAL DEPTH, MD & TVD 8323' MD / 7970' TVD	21. PLUG, BACK T D, MD & TVD 8240' MD / 7878' TVD
22 IF MULTICOMP, HOW MANY 3*	23 INTERVALS DRILLED BY
24 PRODUCING INTERVAL(S). OF THIS COMPLETION - TOP, BOTTOM, NAME (MD AND TVD)* Blanco Mesaverde 6134'-6164' MD To be commingled with MC & DK	25 WAS DIRECTIONAL SURVEY MADE YES
26 TYPE ELECTRIC AND OTHER LOGS RUN Array Induction, Gamma Ray-Density-Neutron, Compensated Dual Neutron and CBL	27 WAS WELL CORED No

28 CASING REPORT (Report all strings set in well)					
CASING SIZE/GRADE	WEIGHT, LB/FT	DEPTH SET (MD)	HOLE SIZE	TOP OF CEMENT, CEMENTING RECORD	AMOUNT PULLED
10-3/4", K-55	40.5#	326'	14-3/4"	250 SX - SURFACE	
7-5/8", K-55	26.4#	3931'	9-7/8"	750 SX - SURFACE	
5-1/2", N-80	17.0#	8314'	6-3/4"	195 SX - 5102' (CBL)	

29 LINER RECORD				30 TUBING RECORD			
SIZE	TOP (MD)	BOTTOM (MD)	SACKS CEMENT*	SCREEN (MD)	SIZE	DEPTH SET (MD)	PACKER SET (MD)
					2 875", 4.7#, J-55, EUE 8rd	8200'	none

31 PERFORATION RECORD (Interval, size, and number)				32 ACID, SHOT, FRACTURE, CEMENT SQUEEZE, ETC	
				DEPTH INTERVAL (MD)	AMOUNT AND KIND OF MATERIAL USED
<u>Mesaverde</u> . Total of 16, 0.34" holes				6134'-6164'	Fraced with 19,300# 20/40 BASE

33 PRODUCTION							
DATE OF FIRST PRODUCTION		PRODUCTION METHOD (Flowing, gas lift, pumping-size and type of pump)				WELL STATUS (PRODUCING OR SI)	
		Flowing				SI - waiting on tie-in	
DATE OF TEST	TESTED	CHOKE SIZE	PROD'N FOR TEST PERIOD	OIL - BBL	GAS - MCF	WATER - BBL	GAS-OIL RATIO
8/25/09	1 hr	2"					
FLOW TBG PRESS	CASING PRESSURE	CALCULATED 24-HOUR RATE		OIL - BBL	GAS - MCF	WATER - BBL	OIL GRAVITY-API (CORR)
0	2 oz.				217 mcf/d		

34 DISPOSITION OF GAS (Sold, used for fuel, vented, etc) TO BE SOLD	TEST WITNESSED BY Cary Spohn
---	------------------------------

35 LIST OF ATTACHMENTS	SUMMARY OF POROUS ZONES, WELLBORE DIAGRAM NSL-5701-A
------------------------	--

36 I hereby certify that the foregoing and attached information is complete and correct as determined from all available records

SIGNED [Signature] TITLE Regulatory Specialist DATE 9-8-09

ACCEPTED FOR RECORD

SEP 14 2009

NMOCD

FARMINGTON FIELD OFFICE

37 SUMMARY OF POROUS ZONES (Show all important zones of porosity and contents thereof, cored intervals, and all drill-stem tests, including depth interval tested, cushion used, time tool open, flowing and shut-in pressures, and recoveries)					38 GEOLOGIC MARKERS			
FORMATION	TOP	BOTTOM	DESCRIPTION, CONTENTS, ETC		NAME	TOP		
						NAME	MEASURED DEPTH	TRUE VERTICAL DEPTH
						PICTURED CLIFFS	3431'	3085'
						LEWIS	3730'	3379'
						CLIFFHOUSE	5611'	5260'
						MENEFEE	5656'	5305'
						POINT LOOKOUT	5886'	5535'
						MANCOS	6334'	5983'
						DAKOTA	8115'	7762'
				</				

# ROSA UNIT #153C

## BLANCO MV/BASIN MANCOS/BASIN DK

### Surface Location:

1115' FNL and 1745' FWL  
NW/4 NW/4 Sec 17 (C), T31N, R05W  
Rio Arriba, NM

### Bottom Hole Location:

1676' FNL and 2222' FEL  
SW/4 NE/4 Sec 17 (G), T31N, R05W  
Rio Arriba, NM

Elevation: 6208' GR

API # 30-039-30197

Spud: 10/02/08

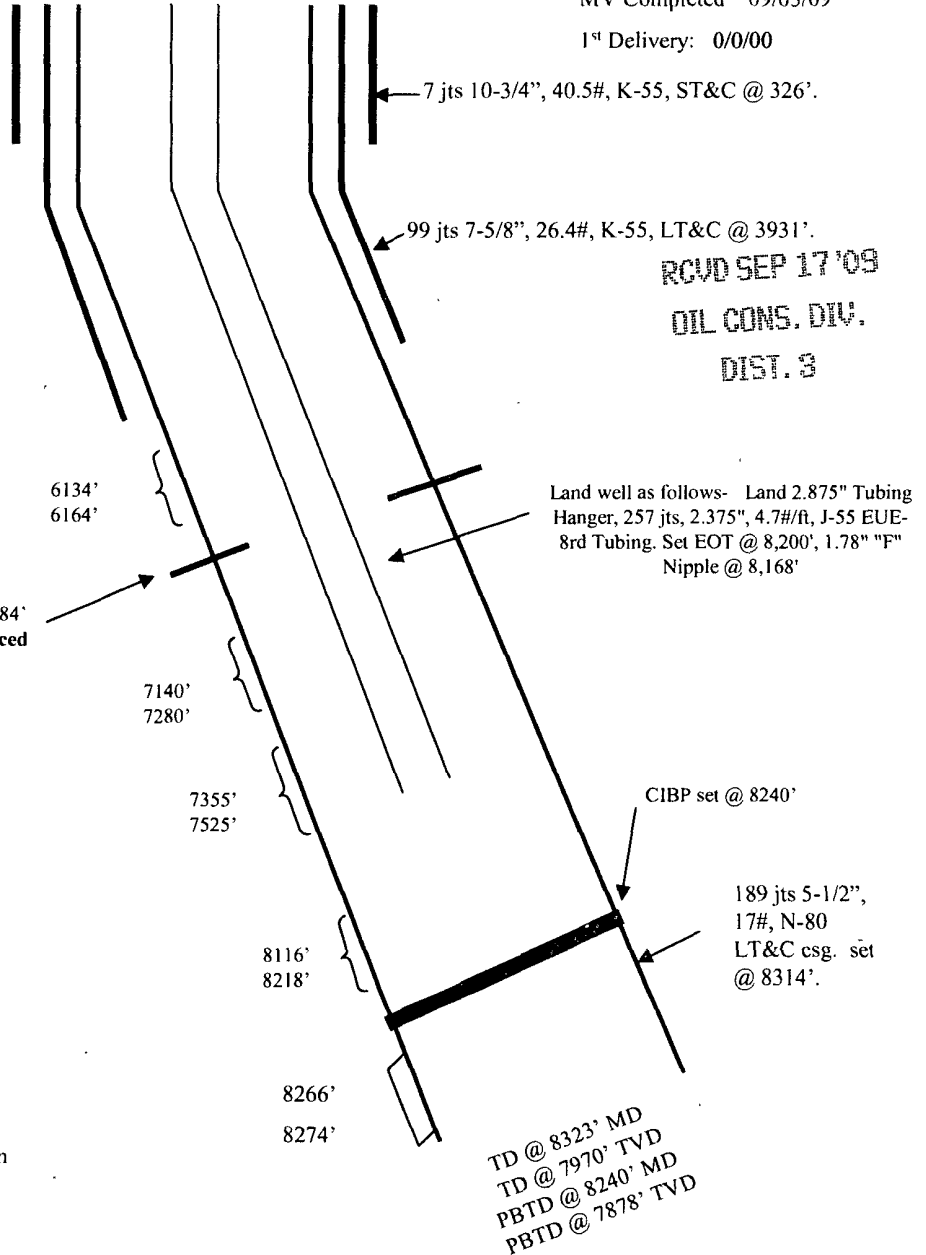
DK Completed: 11/20/08

MC Completed: 06/19/09

MV Completed 09/03/09

1<sup>st</sup> Delivery: 0/0/00

Top	MD Depth	TVD Depth
Pictured Cliffs	3431'	3085'
Lewis	3730'	3379'
Cliffhouse Ss.	5611'	5260'
Menefee	5656'	5305'
Point Lookout	5886'	5535'
Mancos	6334'	5983'
Dakota	8115'	7762'



RCVD SEP 17 '09  
OIL CONS. DIV.  
DIST. 3

### Stimulation:

Mesaverde: 6134'-6164' (16, 0.34" holes)  
Frac with 19,300# 20/40 BASF

Mancos 2<sup>nd</sup>: 7140'-7280' (30, .34" holes)  
Frac with 5140# 100 mesh, follow with  
201,100# 40/70 Ottawa sand

Mancos 1<sup>st</sup>: 7355'-7525' (39 .34" holes)  
Frac with 5000# 100 mesh BASF, follow  
with 188,200# 40/70 mesh BASF

Dakota: 8116' - 8218' (51, 0.34" holes)  
Frac with 8000# 100 mesh WS, follow with  
116,500# 40/70 WS.

Hole Size	Casing	Cement	Volume	Top of Cmt
14-3/4"	10-3/4", 40.5#	250 sxs	345 cu.ft.	Surface
9-7/8"	7-5/8", 26.4#	750 sxs	1511 cu.ft.	Surface
6-3/4"	5-1/2", 17#	195 sxs	442 cu.ft.	5102' CBL