

District I  
1625 N French Dr, Hobbs, NM 88240  
District II  
1301 W Grand Avenue, Artesia, NM 88210  
District III  
1000 Rio Brazos Road, Aztec, NM 87410  
District IV  
1220 S. St. Francis Dr., Santa Fe, NM 87505

State of New Mexico  
Energy Minerals and Natural Resources  
Department  
Oil Conservation Division  
1220 South St. Francis Dr.  
Santa Fe, NM 87505

Form C-144  
July 21, 2008

**For temporary pits, closed-loop systems, and below-grade tanks,** submit to the appropriate NMOCD District Office.  
**For permanent pits and exceptions** submit to the Santa Fe Environmental Bureau office and provide a copy to the appropriate NMOCD District Office.

1350

Pit, Closed-Loop System, Below-Grade Tank, or  
Proposed Alternative Method Permit or Closure Plan Application

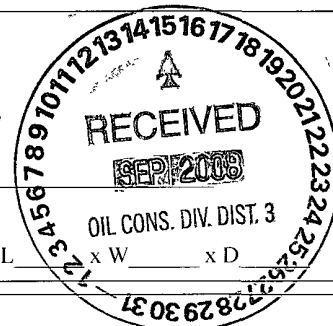
- Type of action: ☒ Permit of a pit, closed-loop system, below-grade tank, or proposed alternative method  
☐ Closure of a pit, closed-loop system, below-grade tank, or proposed alternative method  
☐ Modification to an existing permit  
☐ Closure plan only submitted for an existing permitted or non-permitted pit, closed-loop system, below-grade tank, or proposed alternative method

**Instructions: Please submit one application (Form C-144) per individual pit, closed-loop system, below-grade tank or alternative request**

Please be advised that approval of this request does not relieve the operator of liability should operations result in pollution of surface water, ground water or the environment. Nor does approval relieve the operator of its responsibility to comply with any other applicable governmental authority's rules, regulations or ordinances.

1.  
Operator: Koch Exploration Company, LLC OGRID #: 12807  
Address: PO Box 489, Aztec, NM 87410  
Facility or well name: Gonzales 1  
API Number: 30-045-24487 OCD Permit Number: \_\_\_\_\_  
U/L or Qtr/Qtr P Section 01 Township 29N Range 08W County: San Juan  
Center of Proposed Design: Latitude 36° 45' 00" N Longitude 107° 37' 21" W NAD: ☐ 1927 ☒ 1983  
Surface Owner: ☒ Federal ☐ State ☐ Private ☐ Tribal Trust or Indian Allotment

2.  
☐ **Pit:** Subsection F or G of 19.15.17.11 NMAC  
Temporary: ☐ Drilling ☐ Workover  
☐ Permanent ☐ Emergency ☐ Cavitation ☐ P&A  
☐ Lined ☐ Unlined Liner type: Thickness \_\_\_\_\_ mil ☐ LLDPE ☐ HDPE ☐ PVC ☐ Other \_\_\_\_\_  
☐ String-Reinforced  
Liner Seams: ☐ Welded ☐ Factory ☐ Other \_\_\_\_\_ Volume: \_\_\_\_\_ bbl Dimensions: L \_\_\_\_\_ x W \_\_\_\_\_ x D \_\_\_\_\_



3.  
☐ **Closed-loop System:** Subsection H of 19.15.17.11 NMAC  
Type of Operation: ☐ P&A ☐ Drilling a new well ☐ Workover or Drilling (Applies to activities which require prior approval of a permit or notice of intent)  
☐ Drying Pad ☐ Above Ground Steel Tanks ☐ Haul-off Bins ☐ Other \_\_\_\_\_  
☐ Lined ☐ Unlined Liner type: Thickness \_\_\_\_\_ mil ☐ LLDPE ☐ HDPE ☐ PVC ☐ Other \_\_\_\_\_  
Liner Seams: ☐ Welded ☐ Factory ☐ Other \_\_\_\_\_

4.  
☒ **Below-grade tank:** Subsection I of 19.15.17.11 NMAC  
Volume: 80 bbl Type of fluid: produced water  
Tank Construction material: Steel open-top with expanded metal cover  
☐ Secondary containment with leak detection ☐ Visible sidewalls, liner, 6-inch lift and automatic overflow shut-off  
☐ Visible sidewalls and liner ☐ Visible sidewalls only ☒ Other Visible sidewalls, 6-inch lift, and automatic overflow shut-off  
Liner type: Thickness \_\_\_\_\_ mil ☐ HDPE ☐ PVC ☒ Other See Attachment Section 3.9 – Design and Construction Plan

5.  
☐ **Alternative Method:**  
Submittal of an exception request is required. Exceptions must be submitted to the Santa Fe Environmental Bureau office for consideration of approval.

6.

**Fencing:** Subsection D of 19.15.17.11 NMAC (*Applies to permanent pits, temporary pits, and below-grade tanks*)

- ☐ Chain link, six feet in height, two strands of barbed wire at top (*Required if located within 1000 feet of a permanent residence, school, hospital, institution or church*)
- ☐ Four foot height, four strands of barbed wire evenly spaced between one and four feet
- ☒ Alternate. Please specify 4 foot hog wire with top rail-this design keeps out smaller livestock and wildlife that barbed wire would not

7.

**Netting:** Subsection E of 19.15.17.11 NMAC (*Applies to permanent pits and permanent open top tanks*)

- ☐ Screen ☐ Netting ☒ Other Expanded metal top
- ☐ Monthly inspections (If netting or screening is not physically feasible)

8.

**Signs:** Subsection C of 19.15.17.11 NMAC

- ☐ 12"x 24", 2" lettering, providing Operator's name, site location, and emergency telephone numbers
- ☒ Signed in compliance with 19.15.3.103 NMAC

9.

**Administrative Approvals and Exceptions:**

Justifications and/or demonstrations of equivalency are required. Please refer to 19.15.17 NMAC for guidance.

**Please check a box if one or more of the following is requested, if not leave blank:**

- ☒ Administrative approval(s): **Fencing** Requests must be submitted to the appropriate division district or the Santa Fe Environmental Bureau office for consideration of approval.
- ☐ Exception(s): Requests must be submitted to the Santa Fe Environmental Bureau office for consideration of approval.

10.

**Siting Criteria (regarding permitting):** 19.15.17.10 NMAC

**Instructions:** The applicant must demonstrate compliance for each siting criteria below in the application. Recommendations of acceptable source material are provided below. Requests regarding changes to certain siting criteria may require administrative approval from the appropriate district office or may be considered an exception which must be submitted to the Santa Fe Environmental Bureau office for consideration of approval. Applicant must attach justification for request. Please refer to 19.15.17.10 NMAC for guidance. Siting criteria does not apply to drying pads or above-grade tanks associated with a closed-loop system.

Ground water is less than 50 feet below the bottom of the temporary pit, permanent pit, or below-grade tank. - NM Office of the State Engineer - iWATERS database search; USGS; Data obtained from nearby wells	<input type="checkbox"/> Yes <input checked="" type="checkbox"/> No
Within 300 feet of a continuously flowing watercourse, or 200 feet of any other significant watercourse or lakebed, sinkhole, or playa lake (measured from the ordinary high-water mark). - Topographic map; Visual inspection (certification) of the proposed site	<input type="checkbox"/> Yes <input checked="" type="checkbox"/> No
Within 300 feet from a permanent residence, school, hospital, institution, or church in existence at the time of initial application. (Applies to temporary, emergency, or cavitation pits and below-grade tanks) - Visual inspection (certification) of the proposed site; Aerial photo; Satellite image	<input type="checkbox"/> Yes <input checked="" type="checkbox"/> No <input type="checkbox"/> NA
Within 1000 feet from a permanent residence, school, hospital, institution, or church in existence at the time of initial application. (Applies to permanent pits) - Visual inspection (certification) of the proposed site; Aerial photo; Satellite image	<input type="checkbox"/> Yes <input type="checkbox"/> No <input checked="" type="checkbox"/> NA
Within 500 horizontal feet of a private, domestic fresh water well or spring that less than five households use for domestic or stock watering purposes, or within 1000 horizontal feet of any other fresh water well or spring, in existence at the time of initial application. - NM Office of the State Engineer - iWATERS database search; Visual inspection (certification) of the proposed site	<input type="checkbox"/> Yes <input checked="" type="checkbox"/> No
Within incorporated municipal boundaries or within a defined municipal fresh water well field covered under a municipal ordinance adopted pursuant to NMSA 1978, Section 3-27-3, as amended. - Written confirmation or verification from the municipality; Written approval obtained from the municipality	<input type="checkbox"/> Yes <input checked="" type="checkbox"/> No
Within 500 feet of a wetland. - US Fish and Wildlife Wetland Identification map; Topographic map; Visual inspection (certification) of the proposed site	<input type="checkbox"/> Yes <input checked="" type="checkbox"/> No
Within the area overlying a subsurface mine. - Written confirmation or verification or map from the NM EMNRD-Mining and Mineral Division	<input type="checkbox"/> Yes <input checked="" type="checkbox"/> No
Within an unstable area. - Engineering measures incorporated into the design; NM Bureau of Geology & Mineral Resources; USGS; NM Geological Society; Topographic map	<input type="checkbox"/> Yes <input checked="" type="checkbox"/> No
Within a 100-year floodplain. - FEMA map	<input type="checkbox"/> Yes <input checked="" type="checkbox"/> No

11.

**Temporary Pits, Emergency Pits, and Below-grade Tanks Permit Application Attachment Checklist:** Subsection B of 19.15.17.9 NMAC**Instructions:** Each of the following items must be attached to the application. Please indicate, by a check mark in the box, that the documents are attached.

- ☒ Hydrogeologic Report (Below-grade Tanks) - based upon the requirements of Paragraph (4) of Subsection B of 19.15.17.9 NMAC
- ☐ Hydrogeologic Data (Temporary and Emergency Pits) - based upon the requirements of Paragraph (2) of Subsection B of 19.15.17.9 NMAC
- ☒ Siting Criteria Compliance Demonstrations - based upon the appropriate requirements of 19.15.17.10 NMAC
- ☒ Design Plan - based upon the appropriate requirements of 19.15.17.11 NMAC
- ☒ Operating and Maintenance Plan - based upon the appropriate requirements of 19.15.17.12 NMAC
- ☒ Closure Plan (Please complete Boxes 14 through 18, if applicable) - based upon the appropriate requirements of Subsection C of 19.15.17.9 NMAC and 19.15.17.13 NMAC

☐ Previously Approved Design (attach copy of design)      API Number: \_\_\_\_\_ or Permit Number: \_\_\_\_\_

12.

**Closed-loop Systems Permit Application Attachment Checklist:** Subsection B of 19.15.17.9 NMAC**Instructions:** Each of the following items must be attached to the application. Please indicate, by a check mark in the box, that the documents are attached.

- ☐ Geologic and Hydrogeologic Data (only for on-site closure) - based upon the requirements of Paragraph (3) of Subsection B of 19.15.17.9
- ☐ Siting Criteria Compliance Demonstrations (only for on-site closure) - based upon the appropriate requirements of 19.15.17.10 NMAC
- ☐ Design Plan - based upon the appropriate requirements of 19.15.17.11 NMAC
- ☐ Operating and Maintenance Plan - based upon the appropriate requirements of 19.15.17.12 NMAC
- ☐ Closure Plan (Please complete Boxes 14 through 18, if applicable) - based upon the appropriate requirements of Subsection C of 19.15.17.9 NMAC and 19.15.17.13 NMAC

☐ Previously Approved Design (attach copy of design)      API Number: \_\_\_\_\_

☐ Previously Approved Operating and Maintenance Plan      API Number: \_\_\_\_\_ (Applies only to closed-loop system that use above ground steel tanks or haul-off bins and propose to implement waste removal for closure)

13.

**Permanent Pits Permit Application Checklist:** Subsection B of 19.15.17.9 NMAC**Instructions:** Each of the following items must be attached to the application. Please indicate, by a check mark in the box, that the documents are attached.

- ☐ Hydrogeologic Report - based upon the requirements of Paragraph (1) of Subsection B of 19.15.17.9 NMAC
- ☐ Siting Criteria Compliance Demonstrations - based upon the appropriate requirements of 19.15.17.10 NMAC
- ☐ Climatological Factors Assessment
- ☐ Certified Engineering Design Plans - based upon the appropriate requirements of 19.15.17.11 NMAC
- ☐ Dike Protection and Structural Integrity Design - based upon the appropriate requirements of 19.15.17.11 NMAC
- ☐ Leak Detection Design - based upon the appropriate requirements of 19.15.17.11 NMAC
- ☐ Liner Specifications and Compatibility Assessment - based upon the appropriate requirements of 19.15.17.11 NMAC
- ☐ Quality Control/Quality Assurance Construction and Installation Plan
- ☐ Operating and Maintenance Plan - based upon the appropriate requirements of 19.15.17.12 NMAC
- ☐ Freeboard and Overtopping Prevention Plan - based upon the appropriate requirements of 19.15.17.11 NMAC
- ☐ Nuisance or Hazardous Odors, including H<sub>2</sub>S, Prevention Plan
- ☐ Emergency Response Plan
- ☐ Oil Field Waste Stream Characterization
- ☐ Monitoring and Inspection Plan
- ☐ Erosion Control Plan
- ☐ Closure Plan - based upon the appropriate requirements of Subsection C of 19.15.17.9 NMAC and 19.15.17.13 NMAC

14.

**Proposed Closure:** 19.15.17.13 NMAC**Instructions:** Please complete the applicable boxes, Boxes 14 through 18, in regards to the proposed closure plan.

Type: ☐ Drilling ☐ Workover ☐ Emergency ☐ Cavitation ☐ P&A ☐ Permanent Pit ☒ Below-grade Tank ☐ Closed-loop System

☐ Alternative

Proposed Closure Method: ☒ Waste Excavation and Removal

☐ Waste Removal (Closed-loop systems only)

☐ On-site Closure Method (Only for temporary pits and closed-loop systems)

☐ In-place Burial ☐ On-site Trench Burial

☐ Alternative Closure Method (Exceptions must be submitted to the Santa Fe Environmental Bureau for consideration)

15.

**Waste Excavation and Removal Closure Plan Checklist:** (19.15.17.13 NMAC) **Instructions:** Each of the following items must be attached to the closure plan. Please indicate, by a check mark in the box, that the documents are attached.

- ☒ Protocols and Procedures - based upon the appropriate requirements of 19.15.17.13 NMAC
- ☒ Confirmation Sampling Plan (if applicable) - based upon the appropriate requirements of Subsection F of 19.15.17.13 NMAC
- ☐ Disposal Facility Name and Permit Number (for liquids, drilling fluids and drill cuttings)
- ☒ Soil Backfill and Cover Design Specifications - based upon the appropriate requirements of Subsection H of 19.15.17.13 NMAC
- ☒ Re-vegetation Plan - based upon the appropriate requirements of Subsection I of 19.15.17.13 NMAC
- ☒ Site Reclamation Plan - based upon the appropriate requirements of Subsection G of 19.15.17.13 NMAC

16.

**Waste Removal Closure For Closed-loop Systems That Utilize Above Ground Steel Tanks or Haul-off Bins Only:** (19.15.17.13.D NMAC)**Instructions:** Please identify the facility or facilities for the disposal of liquids, drilling fluids and drill cuttings. Use attachment if more than two facilities are required.

Disposal Facility Name: \_\_\_\_\_ Disposal Facility Permit Number: \_\_\_\_\_

Disposal Facility Name: \_\_\_\_\_ Disposal Facility Permit Number: \_\_\_\_\_

Will any of the proposed closed-loop system operations and associated activities occur on or in areas that *will not* be used for future service and operations?
☐ Yes (If yes, please provide the information below) ☐ No
*Required for impacted areas which will not be used for future service and operations:*

- ☐ Soil Backfill and Cover Design Specifications - based upon the appropriate requirements of Subsection H of 19.15.17.13 NMAC
- ☐ Re-vegetation Plan - based upon the appropriate requirements of Subsection I of 19.15.17.13 NMAC
- ☐ Site Reclamation Plan - based upon the appropriate requirements of Subsection G of 19.15.17.13 NMAC

17.

**Siting Criteria (regarding on-site closure methods only):** 19.15.17.10 NMAC**Instructions:** Each siting criteria requires a demonstration of compliance in the closure plan. Recommendations of acceptable source material are provided below. Requests regarding changes to certain siting criteria may require administrative approval from the appropriate district office or may be considered an exception which must be submitted to the Santa Fe Environmental Bureau office for consideration of approval. Justifications and/or demonstrations of equivalency are required. Please refer to 19.15.17.10 NMAC for guidance.

- |   |  |
|---|--|
| Ground water is less than 50 feet below the bottom of the buried waste.   | <input type="checkbox"/> Yes <input type="checkbox"/> No |
| - NM Office of the State Engineer - iWATERS database search; USGS; Data obtained from nearby wells  | <input type="checkbox"/> NA                              |
| Ground water is between 50 and 100 feet below the bottom of the buried waste  | <input type="checkbox"/> Yes <input type="checkbox"/> No |
| - NM Office of the State Engineer - iWATERS database search; USGS; Data obtained from nearby wells  | <input type="checkbox"/> NA                              |
| Ground water is more than 100 feet below the bottom of the buried waste.  | <input type="checkbox"/> Yes <input type="checkbox"/> No |
| - NM Office of the State Engineer - iWATERS database search; USGS; Data obtained from nearby wells  | <input type="checkbox"/> NA                              |
| Within 300 feet of a continuously flowing watercourse, or 200 feet of any other significant watercourse or lakebed, sinkhole, or playa lake (measured from the ordinary high-water mark).   | <input type="checkbox"/> Yes <input type="checkbox"/> No |
| - Topographic map; Visual inspection (certification) of the proposed site   |  |
| Within 300 feet from a permanent residence, school, hospital, institution, or church in existence at the time of initial application.   | <input type="checkbox"/> Yes <input type="checkbox"/> No |
| - Visual inspection (certification) of the proposed site; Aerial photo; Satellite image   |  |
| Within 500 horizontal feet of a private, domestic fresh water well or spring that less than five households use for domestic or stock watering purposes, or within 1000 horizontal feet of any other fresh water well or spring, in existence at the time of initial application. | <input type="checkbox"/> Yes <input type="checkbox"/> No |
| - NM Office of the State Engineer - iWATERS database; Visual inspection (certification) of the proposed site  |  |
| Within incorporated municipal boundaries or within a defined municipal fresh water well field covered under a municipal ordinance adopted pursuant to NMSA 1978, Section 3-27-3, as amended.  | <input type="checkbox"/> Yes <input type="checkbox"/> No |
| - Written confirmation or verification from the municipality; Written approval obtained from the municipality   |  |
| Within 500 feet of a wetland.   | <input type="checkbox"/> Yes <input type="checkbox"/> No |
| - US Fish and Wildlife Wetland Identification map; Topographic map; Visual inspection (certification) of the proposed site  |  |
| Within the area overlying a subsurface mine.  | <input type="checkbox"/> Yes <input type="checkbox"/> No |
| - Written confirmation or verification or map from the NM EMNRD-Mining and Mineral Division   |  |
| Within an unstable area.  | <input type="checkbox"/> Yes <input type="checkbox"/> No |
| - Engineering measures incorporated into the design; NM Bureau of Geology & Mineral Resources; USGS; NM Geological Society; Topographic map   |  |
| Within a 100-year floodplain.   | <input type="checkbox"/> Yes <input type="checkbox"/> No |
| - FEMA map  |  |

18.

**On-Site Closure Plan Checklist:** (19.15.17.13 NMAC) **Instructions:** Each of the following items must be attached to the closure plan. Please indicate, by a check mark in the box, that the documents are attached.

- ☐ Siting Criteria Compliance Demonstrations - based upon the appropriate requirements of 19.15.17.10 NMAC
- ☐ Proof of Surface Owner Notice - based upon the appropriate requirements of Subsection F of 19.15.17.13 NMAC
- ☐ Construction/Design Plan of Burial Trench (if applicable) based upon the appropriate requirements of 19.15.17.11 NMAC
- ☐ Construction/Design Plan of Temporary Pit (for in-place burial of a drying pad) - based upon the appropriate requirements of 19.15.17.11 NMAC
- ☐ Protocols and Procedures - based upon the appropriate requirements of 19.15.17.13 NMAC
- ☐ Confirmation Sampling Plan (if applicable) - based upon the appropriate requirements of Subsection F of 19.15.17.13 NMAC
- ☐ Waste Material Sampling Plan - based upon the appropriate requirements of Subsection F of 19.15.17.13 NMAC
- ☐ Disposal Facility Name and Permit Number (for liquids, drilling fluids and drill cuttings or in case on-site closure standards cannot be achieved)
- ☐ Soil Cover Design - based upon the appropriate requirements of Subsection H of 19.15.17.13 NMAC
- ☐ Re-vegetation Plan - based upon the appropriate requirements of Subsection I of 19.15.17.13 NMAC
- ☐ Site Reclamation Plan - based upon the appropriate requirements of Subsection G of 19.15.17.13 NMAC

19.

**Operator Application Certification:**

I hereby certify that the information submitted with this application is true, accurate and complete to the best of my knowledge and belief.

Name (Print): John Clark

Title: District Superintendent

Signature: 

Date: 9-15-08

e-mail address: clark23j@kochind.com

Telephone: (505) 334-9111

20.

**OCD Approval:** ☒ Permit Application (including closure plan) ☐ Closure Plan (only) ☐ OCD Conditions (see attachment)

OCD Representative Signature: 

Approval Date: 10-29-09

Title: 

OCD Permit Number: \_\_\_\_\_

21.

**Closure Report (required within 60 days of closure completion):** Subsection K of 19.15.17.13 NMAC

**Instructions:** Operators are required to obtain an approved closure plan prior to implementing any closure activities and submitting the closure report. The closure report is required to be submitted to the division within 60 days of the completion of the closure activities. Please do not complete this section of the form until an approved closure plan has been obtained and the closure activities have been completed.

☐ Closure Completion Date: \_\_\_\_\_

22.

**Closure Method:**

☐ Waste Excavation and Removal ☐ On-Site Closure Method ☐ Alternative Closure Method ☐ Waste Removal (Closed-loop systems only)  
☐ If different from approved plan, please explain.

23.

**Closure Report Regarding Waste Removal Closure For Closed-loop Systems That Utilize Above Ground Steel Tanks or Haul-off Bins Only:**

**Instructions:** Please identify the facility or facilities for where the liquids, drilling fluids and drill cuttings were disposed. Use attachment if more than two facilities were utilized.

Disposal Facility Name: \_\_\_\_\_

Disposal Facility Permit Number: \_\_\_\_\_

Disposal Facility Name: \_\_\_\_\_

Disposal Facility Permit Number: \_\_\_\_\_

Were the closed-loop system operations and associated activities performed on or in areas that *will not* be used for future service and operations?

☐ Yes (If yes, please demonstrate compliance to the items below) ☐ No

Required for impacted areas which will not be used for future service and operations:

- ☐ Site Reclamation (Photo Documentation)  
☐ Soil Backfilling and Cover Installation  
☐ Re-vegetation Application Rates and Seeding Technique

24.

**Closure Report Attachment Checklist:** *Instructions: Each of the following items must be attached to the closure report. Please indicate, by a check mark in the box, that the documents are attached.*

- ☐ Proof of Closure Notice (surface owner and division)  
☐ Proof of Deed Notice (required for on-site closure)  
☐ Plot Plan (for on-site closures and temporary pits)  
☐ Confirmation Sampling Analytical Results (if applicable)  
☐ Waste Material Sampling Analytical Results (required for on-site closure)  
☐ Disposal Facility Name and Permit Number  
☐ Soil Backfilling and Cover Installation  
☐ Re-vegetation Application Rates and Seeding Technique  
☐ Site Reclamation (Photo Documentation)

On-site Closure Location: Latitude \_\_\_\_\_

Longitude \_\_\_\_\_

NAD: ☐ 1927 ☐ 1983

25.

**Operator Closure Certification:**

I hereby certify that the information and attachments submitted with this closure report is true, accurate and complete to the best of my knowledge and belief. I also certify that the closure complies with all applicable closure requirements and conditions specified in the approved closure plan.

Name (Print): \_\_\_\_\_

Title: \_\_\_\_\_

Signature: \_\_\_\_\_

Date: \_\_\_\_\_

e-mail address: \_\_\_\_\_

Telephone: \_\_\_\_\_

**Attachment to Form C-144**  
**Below-grade Tank Permit Application**

**Introduction**

Koch Exploration Company, LLC (KEC) is submitting this permit application to operate an existing below-grade tank under the authority of 19.15.17 NMAC. The tank isn't currently permitted. This document serves as supporting documentation referenced in the attached Form C-144. KEC operates coal bed methane production sites in San Juan County, New Mexico. The below-grade tank at the subject facility is used to collect precipitation and residual lubrication oil from the engine skid drain system and produced water from the primary and secondary separators. Produced water from the secondary separator may have small quantities of entrained lubricating oil from the compressor cylinder. In general, emulsified lubricating oil makes up a small percentage of the overall contents of the below-grade tank.

This application is being submitted for the following well site:

Site Name: Gonzales 1

Location (S/T/R): S01, T29N, R8W

The supporting documentation contained in this C-144 attachment is organized as follows:

Section 1 – Hydrogeologic Report

Section 2 – Siting Criteria Compliance Demonstration

Section 3 – Design Plan

Section 4 – Operating and Maintenance Plan

Section 5 – Closure Plan

References

**Appendices**

A – USGS 7.5 Minute Topography Map and US Fish and Wildlife Wetland Identification Map

B – Groundwater Data (water well searches and/or depth to groundwater per cathodic bed data)

C – Aerial Photo

D – FEMA 100-year Floodplain Map

E – Municipal Boundary Map

F – Mine Map

## **Section 1 – Hydrogeologic Report**

The site is located in the San Juan Basin. The San Juan Basin covers an area of about 7,500 square miles across the Colorado/New Mexico line in the Four Corners region. It measures roughly 100 miles long in the north-south direction and 90 miles wide. The Continental Divide trends north-south along the east side of the basin, and land surface elevations within the basin range from 5,100 feet on the western side to over 8,000 feet in the northern part (EPA 2004).

The geology of the area as written in the Final Approved Total Maximum Daily Load (TMDL) For The San Juan River Watershed (May 2005) is described below:

The San Juan Basin lies on the Colorado Plateau. Several formations of Tertiary and Cretaceous age compose the consolidated geology in the New Mexico portion of the San Juan River basin. The predominant geologic formation is the Nacimiento Formation of Tertiary age which underlies the soils and crops out along nearly all of the reach of the San Juan River valley east of Farmington (Blanchard et al. 1993). The Cretaceous Kirtland and Fruitland Formation and the Mancos Shale layers underlie the soils and crop out west of the Hogback. These two formations underlie the soils and compose the outcrop in most of the upland area south of the San Juan River. Near Farmington, Cretaceous rocks rise sharply in some areas, forming hogback ridges (Chronic 1987). All of the shales of Cretaceous age consist at least in part of gray to black shale. The San Juan River valley is composed in part of Quaternary unconsolidated sand, gravel, silt, clay, and terrace gravel and boulder deposits. Valley soils typically are derived from sandstone, shale, siltstone, and mudstone and range in permeability from moderately rapid to moderately slow (Blanchard et al. 1993).

The San Juan County-Eastern Part Soil Survey lists the permeability of native soils as moderate with an infiltration rate of 0.2 – 2.0 in/hr. A 7.5 minute USGS topography map depicting the site location and localized surface drainage (topography) is included as Appendix A.

Based on information obtained during installation of cathodic beds at or near the location (see Appendix B), depth to groundwater is expected to be 196 ft from the bottom of the below grade tank.

The State Engineer Office iWaters database shows a water well owned by Burlington Resources in the NE NW SE of Section 1. KEC was unable to locate the well during field reconnaissance, or verify that it was still active. Based on the distance from the tank to the quarter/quarter/quarter boundary (see map, Appendix B), the well is between 890 and 1,725 feet from the tank. The well is used for stock and serves fewer than five households.

## Section 2 – Siting Criteria Compliance Demonstration (19.15.17.10)

This section, along with referenced appendices, provides data to demonstrate compliance with the siting criteria.

Criteria [19.15.17.10.A(1)]	Compliance Statement
(a) Ground water > 50ft below bottom of tank	Based on available data groundwater is believed to be greater then 50 ft from bottom of tank (Appendix A & B)
(b) Continuously flowing water course > 300 ft from tank and significant watercourse <sup>1</sup> or lakebed, sinkhole, or playa lake measured from high water mark > 200 ft from tank	Nearest continuously flowing water course is greater then 300 ft from tank. Nearest significant watercourse <sup>1</sup> , lakebed, sinkhole, or playa lake is greater then 200 ft from tank (Visual inspection and Appendix A)
(c) Permanent Residence, school, hospital institution, or church > 300 ft from tank	Nearest residence, school, or hospital is greater then 300 ft from tank (Visual inspection and Appendix C)
(d) Private, domestic fresh water well or spring > 500 ft from tank. Any other fresh water well or spring >1,000 ft from tank	Nearest private, domestic fresh water well is greater then 500 ft from tank and any other fresh water well or spring > 1,000 ft from tank (Visual inspection and Appendix B)
(e) Within incorporated municipal boundary or defined municipal fresh water field	Not within incorporated municipal boundary or defined municipal fresh water field (Appendix E)
(f) Wetland > 500 ft	No wetlands within 500 ft (Visual inspection and Appendix A)
(g) Not overlying a subsurface mine	Not overlying a subsurface mine (Appendix F)
(h) Not within an unstable area	Not within an unstable area. Engineering measures incorporated into design.
(i) Not within a 100-year floodplain	Not within a 100-year floodplain (Appendix D)

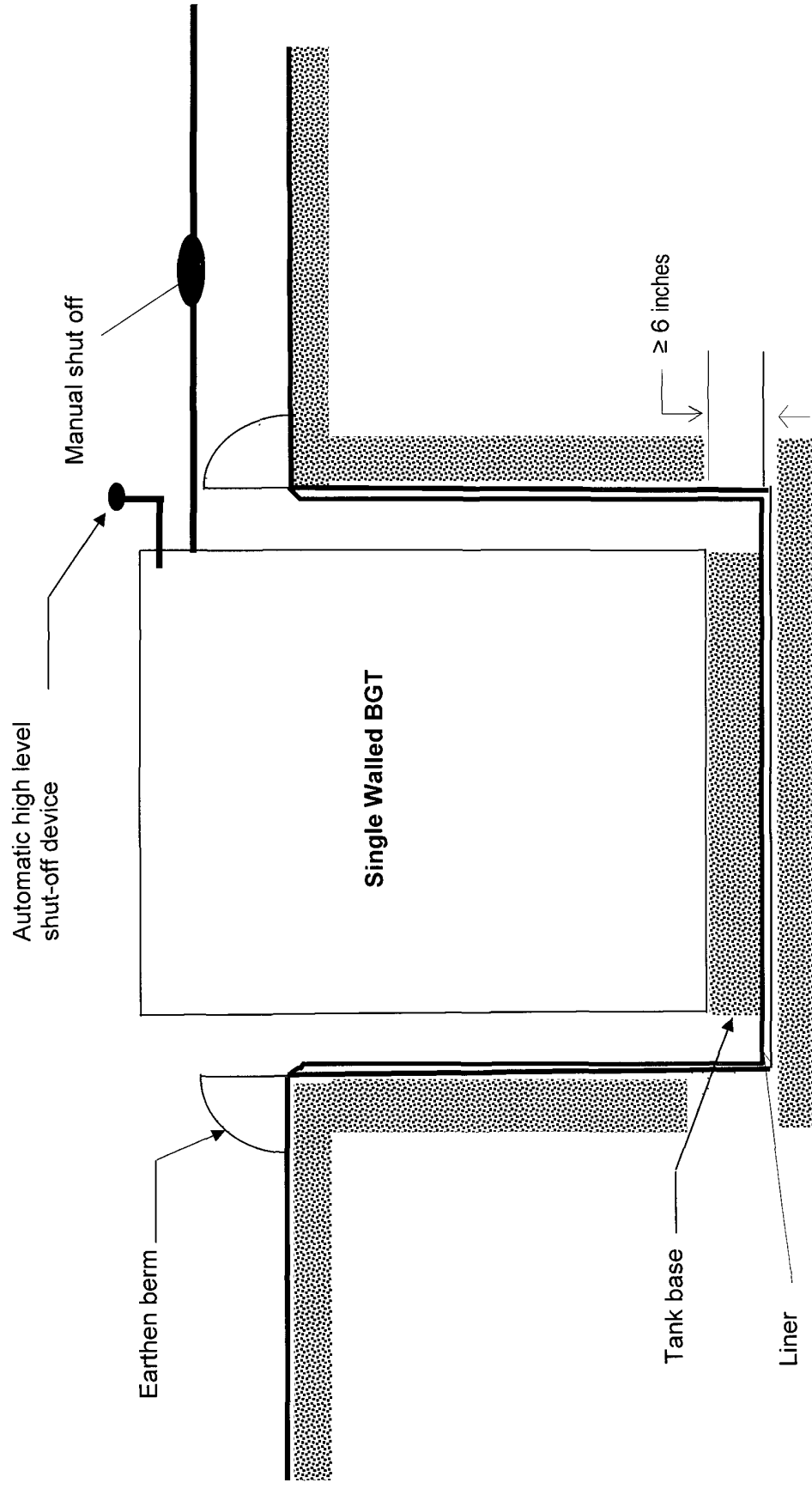
<sup>1</sup> A significant watercourse is defined as “a watercourse with a defined bed and bank either named on a USGS 7.5 quadrangle map or a first order tributary of such watercourse” [19.15.17.7(G)]



### Section 3 – Design and Construction Plan (19.15.17.11)

1. **Tank specifications:** ¼” steel bottom with 3/16” steel sidewalls
2. **Purpose:** Temporary storage of produced water, lubricating oil, and rainwater
3. **Capacity:** 80 bbl, sufficient to contain the volume of liquids generated at the site
4. **Material:** Steel resistant to corrosion from contents and damage from sunlight
5. **Netting:** Tanks are covered with either solid or expanded metal mesh top to prevent entry of wildlife, including migratory birds.
6. **Side walls:** Visible for leak inspection.
7. **Overflow protection:** Automatic high-level shutoff control device and manual controls consisting of a valve that shuts off flow to tank or shutting in wellbore to prevent overflow.
8. **Run-on protection:** Surrounded by an earthen berm to divert run-on around the tank
9. **Liner and Foundation:** A geomembrane liner consisting of at least 60-mil HDPE will be installed beneath the tank within five years of the permit issue date. The liner will have a hydraulic conductivity greater than  $1 \times 10^{-9}$  cm/s and the material will be impervious and resistant to petroleum hydrocarbons, salts, acidic and alkaline solutions, and ultraviolet light. The liner will comply with EPA SW-846 method 9090A. The absence of leaked liquids will be visually inspected on the liner surface. The tank is set on a level base greater than 6 inches thick consisting of I-beams designed to prevent damage to the liner.
10. **Sign:** A sign is posted on the well site in a prominent place indicating the operator name, location of site by quarter quarter, section, township, and range, and emergency telephone numbers. The sign is in compliance with 19.15.3.103 NMAC.
11. **Fencing:** The tank is surrounded by a fence composed of 4 foot welded hog panels or 4 foot hog wire with top rail. If steel top rail is not yet installed with hog wire it will be installed as soon as time permits but no later than June 16, 2013. Because the well site is in a remote location (and not within 1,000 feet of a permanent residence, school, hospital, institution, or church), this fence is sufficient to secure the tank and prevent livestock/wildlife entry.

Figure 1. Below-grade Tank Schematic (Specific material and design specifications are described in Section 3)



## **Section 4 - Operating and Maintenance Plan (19.15.17.12 NMAC)**

### General Specifications (19.15.17.12 (A) NMAC)

1. The below-grade tank will be operated such that the liner integrity and secondary containment system are maintained to prevent contamination of fresh water and protect public health and the environment.
2. Only liquids generated by normal gas production operations (produced water, precipitation from the compressor engine skid, and incidental lubricating oil) will be stored in the tank. Accumulated produced water and precipitation is collected by a vacuum truck and disposed in a licensed Class II underground injection well. Lubricating oil is removed separately and hauled to a licensed recycling or disposal facility.
3. Hazardous wastes will not be discharged into or stored in the tank.
4. If the below-grade tank develops a leak, KEC will remove all liquid above the damage or leak line within 48 hours. The division district office will be contacted within 48 hours of the discovery. KEC will repair the damage or replace the below-grade tank.
5. The below-grade tank has overflow prevention measures in place (see Section 3). An earthen secondary containment berm is in place to divert run-on and contain a tank overflow.

### Additional Requirements for Below-Grade Tanks (19.15.17.12 (D) NMAC)

1. Incidental quantities of lubricating oil (generally as an emulsion) may collect in the below-grade tank. This oil will be removed periodically and hauled to a licensed recycling or disposal facility.
2. Liquids will be discharged to the below-grade tank via a steel pipe mounted to the top of the tank. Liquids will be removed from the tank via a stand pipe by a vacuum truck and disposed as described above.
3. The tank is inspected monthly and a written record is maintained for at least five years.
4. Adequate freeboard exists to prevent overtopping of the below-grade tank. The secondary containment system is designed to hold, at a minimum, the contents of the tank plus freeboard for accumulated precipitation from a 25 year, 24 hour rain event (2 inches), as designed by a New Mexico Registered Professional Engineer and described in the Spill Prevention, Control, and Countermeasure Plan.

## **Section 5 – Closure and Reclamation Plan (19.15.17.13 NMAC)**

KEC will close this below-grade tank within 60 days of cessation of the below-grade tank's operation in accordance with 19.15.17.13(E) NMAC (summarized below):

1. Liquids and sludge will be removed from the tank prior to implementing a closure method and disposed in a division-approved facility.
2. The below-grade tank will be removed and disposed in a division approved facility, or it will be recycled, reused, or reclaimed in a manner to be approved by the division district office.
3. Equipment associated with the below-grade tank and not required for some other purpose will be removed and disposed, recycled, or reused.
4. KEC will test the soils beneath the below-grade tank to determine whether a release has occurred. KEC will collect, at a minimum, a five point, composite sample; collect individual grab samples from any area that is wet, discolored or showing other evidence of a release; and analyze for BTEX, TPH and chlorides to demonstrate that the benzene concentration, as determined by EPA SW-846 methods 8021B or 8260B or other EPA method that the division approves, does not exceed 0.2 mg/kg; total BTEX concentration, as determined by EPA SW-846 methods 8021B or 8260B or other EPA method that the division approves, does not exceed 50 mg/kg; the TPH concentration, as determined by EPA method 418.1 or other EPA method that the division approves, does not exceed 100 mg/kg; and the chloride concentration, as determined by EPA method 300.1 or other EPA method that the division approves (such as EPA Method 300.0 or Standard Method 4500B, as approved in the July 24, 2008 NMOCD memorandum from Mark Fesmire), does not exceed 250 mg/kg, or the background concentration, whichever is greater. KEC will notify the division of its results on form C-141.
5. If it's determined that a release has occurred, KEC will comply with 19.15.3.116 or 19.15.1.19 NMAC as appropriate.
6. Once sampling demonstrates that concentrations specified in 19.15.17.13(E)(4) are not exceeded, KEC will backfill the excavation with compacted, non-waste containing, earthen material, construct a division-prescribed soil cover, and recontour and re-vegetate the site. The division-prescribed soil cover, recontouring, and re-vegetation shall comply with Subsections G, H, and I or 19.15.17.13 NMAC.
7. The soil cover design will be consistent with the requirements of 19.15.17.13(H)(1) and (3). The soil cover will consist of the background thickness of topsoil or one foot of suitable material to establish vegetation at the site, whichever is greater. The soil cover will be constructed to the site's existing grade and prevent ponding of water and erosion of the cover material.
8. KEC will seed the disturbed areas the first growing season after closing the below grade tank. Seeding will be accomplished via drilling on the contour whenever practical or by other division-approved methods. BLM or Forest Service stipulated seed mixes will be used on federal lands. Vegetative cover will equal 70% of the native perennial vegetative cover (un-impacted) consisting of at least three native plant species, including at least one grass, but not including noxious weeds, and maintain that cover through two successive growing seasons. Repeat seeding or planting will be continued until successful vegetative growth occurs. During the two growing seasons that prove viability, there shall be no artificial irrigation of the vegetation.
9. KEC shall notify the surface owner by certified mail, return receipt requested, that the operator plans to close a temporary pit, a permanent pit, a below-grade tank or where the operator has

approval for on-site closure. Evidence of mailing of the notice to the address of the surface owner shown in the county tax records is sufficient to demonstrate compliance with this requirement.

10. Within 60 days of closure completion, KEC shall submit a closure report on form C-144 and other supporting documentation required by 19.15.17.13(K).
11. KEC will notify the appropriate division district office verbally or by other means at least 72 hours, but not more than one week, prior to any closure operation (19.15.17.13(J)(2)).

## **References**

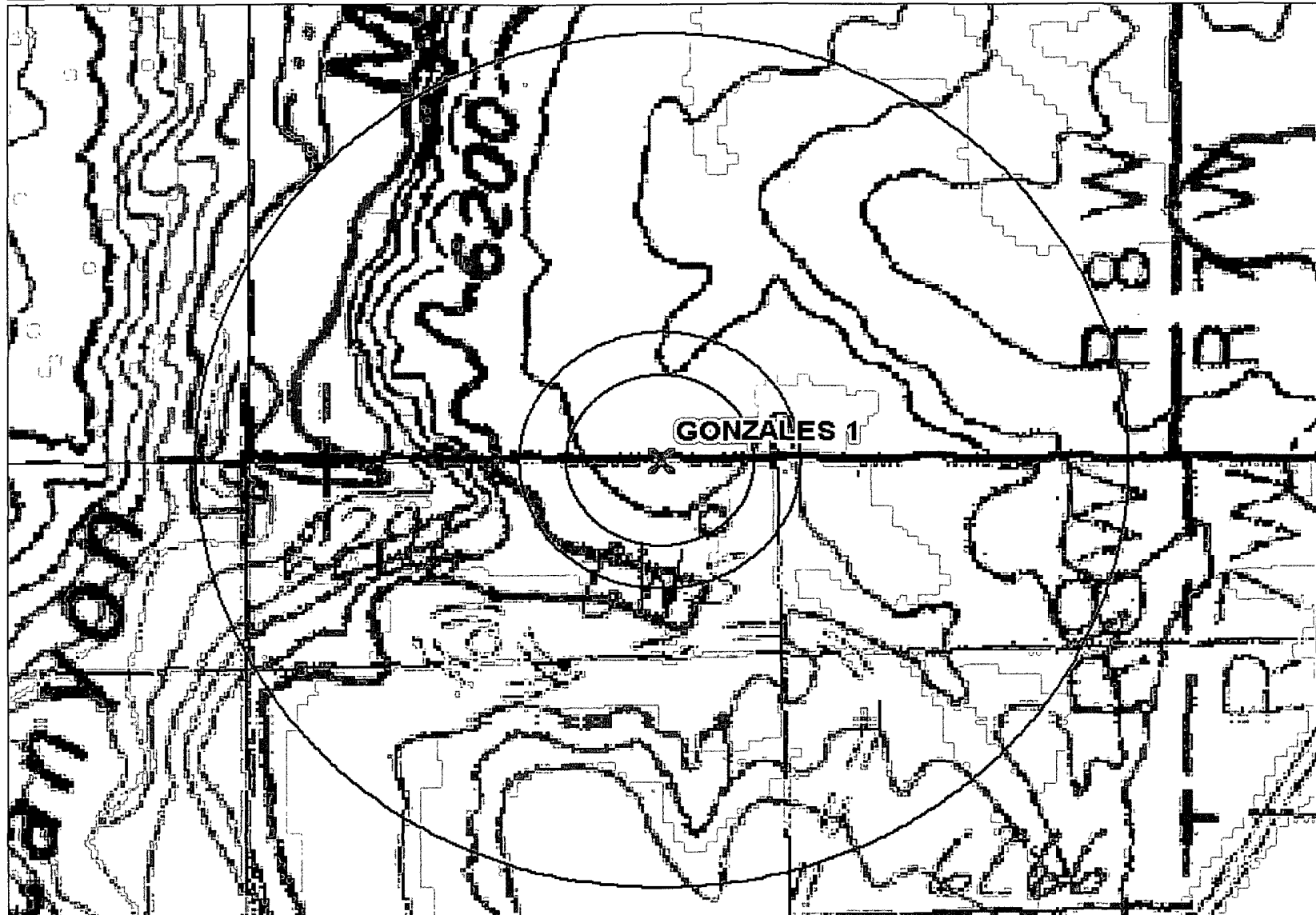
Environmental Protection Agency. 2004. Evaluation of Impacts to Underground Sources of Drinking Water by Hydraulic Fracturing of Coalbed Methane Reservoirs. Available at [www.nmenv.state.nm.us/swqb/Projects/SanJuan/TMDL1/11.pdf](http://www.nmenv.state.nm.us/swqb/Projects/SanJuan/TMDL1/11.pdf)

Blanchard, P., R. Roy, and T. O'Brien. 1993. Reconnaissance Investigation of Water Quality, Bottom Sediment, and Biota Associated with Irrigation Drainage in the San Juan River Area, San Juan County, Northwestern New Mexico, 1990-91. USGS Water Resources Investigations Report 93-4065.

Chronic, H. 1987. Roadside Geology of New Mexico. Mountain Press Publishing Company, Missoula, MT.

# **APPENDIX A**

**USGS 7.5 Minute Topography Map and US Fish & Wildlife  
Wetland Identification Map**



Data use subject to license  
 © 2006 DeLorme. Topo USA® 6.0.  
 www.delorme.com

★  
 MN (10.2° E)

0 100 200 300 400 500 ft  
 Data Zoom 15-0

Radii denote 200 feet, 300 feet and 1,000 feet from location

# Wetlands Map-San Juan County



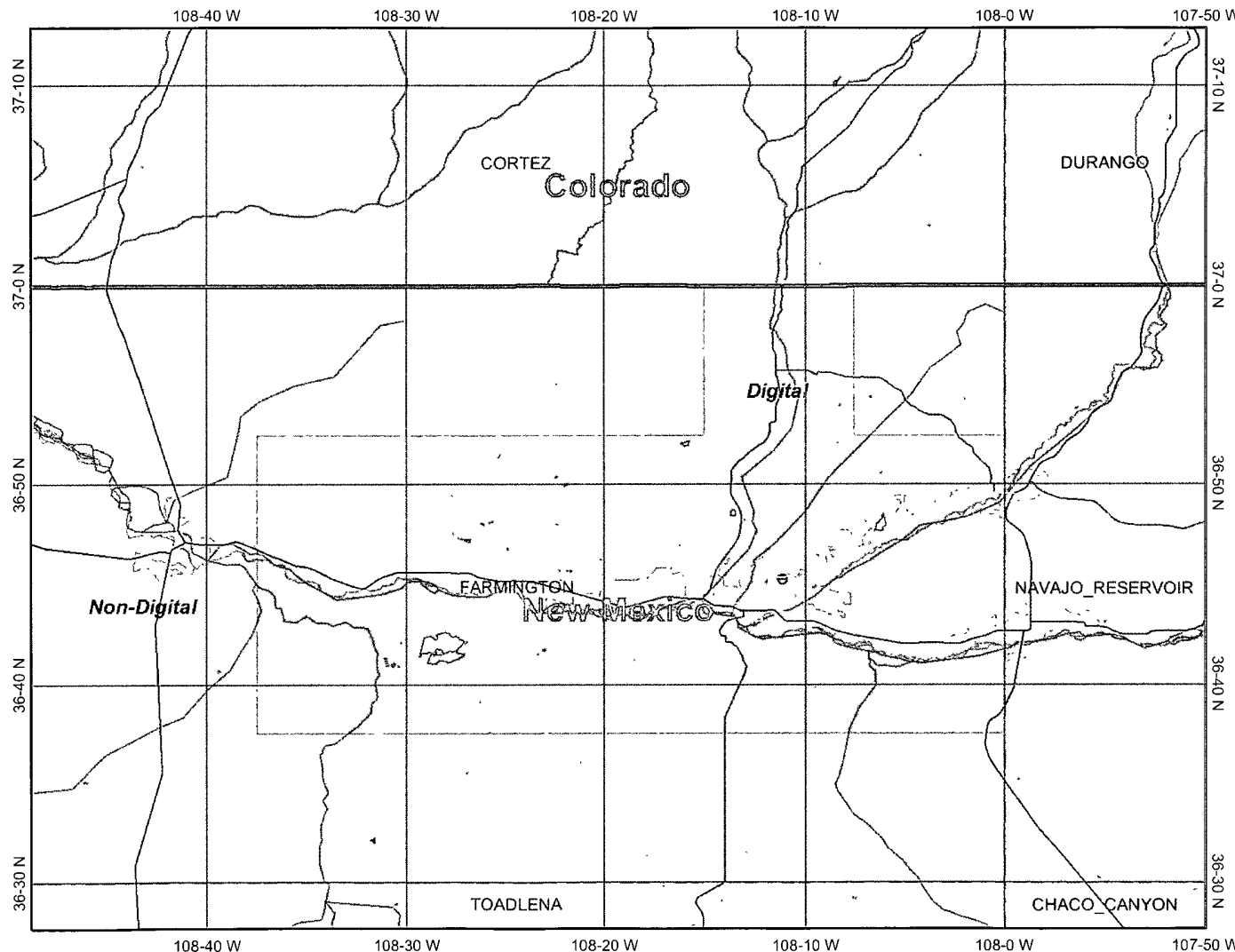
APPENDIX A

## Legend

- Interstate
- Major Roads
- Other Road
- Interstate
- State highway
- US highway
- Major Cities
- USGS Quad Index 100K
- Lower 48 Available Wetland Data**
- Non-Digital**
- Digital
- No Data
- Scan
- NHD Waterbodies**
- LAKE/POND
- RESERVOIR
- STREAM/RIVER
- Streams 2M
- Counties 100K
- Urban Areas 300K
- States 100K
- South America
- North America



Scale: 1:586,805



Map center: 36°50' N, 108°19' W

This map is a user generated static output from an Internet mapping site and is for general reference only. Data layers that appear on this map may or may not be accurate, current, or otherwise reliable. THIS MAP IS NOT TO BE USED FOR NAVIGATION.



# Wetlands



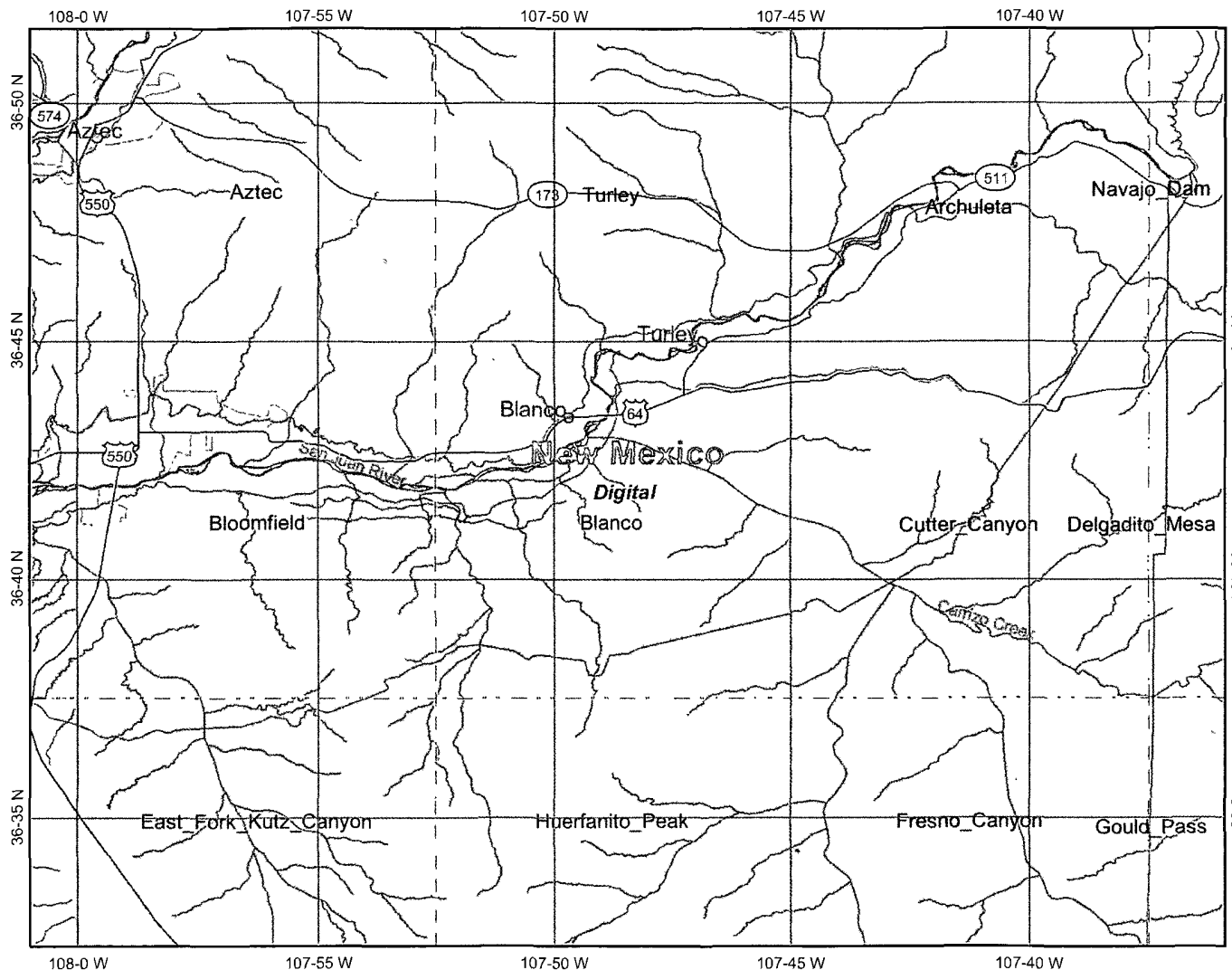
APPENDIX A

## Legend

- Interstate
- Major Roads
- Other Road
- Interstate
- State highway
- US highway
- Cities
- USGS Quad Index 24K
- Lower 48 Available Wetland Data
- Non-Digital
- Digital
- No Data
- Scan
- NHD Waterbodies
- LAKE/POND
- RESERVOIR
- STREAM/RIVER
- NHD Streams
- Counties 100K
- Urban Areas 300K
- States 100K
- South America
- North America



Scale: 1:250,749



Map center: 36°41' N, 107°48' W

This map is a user generated static output from an Internet mapping site and is for general reference only. Data layers that appear on this map may or may not be accurate, current, or otherwise reliable. THIS MAP IS NOT TO BE USED FOR NAVIGATION.

## **APPENDIX B**

**Groundwater Data (water well searches and/or depth to  
groundwater per cathodic bed data)**

Gonzales 1  
API #30-045-24487  
S01, T29N, R08W 1095' FSL & 1120' FEL SE ¼ SE ¼  
Lat. 36.45.00 N Long 107.37.21 W

New Mexico Office of the State Engineer - Microsoft Internet Explorer

File Edit View Favorites Tools Help

Back Forward Stop Home Search Favorites

Address http://waters.ose.state.nm.us:7001/iWATERS/WellAndSurfaceDispatcher Go Links

---

New Mexico Office of the State Engineer  
POD Reports and Downloads

Township: 29N Range: 08W Sections: 01

NAD27 X: Y: Zone: Search Radius:

County: SJ Basin: Number: Suffix:

Owner Name (First): (Last): ☐ Non-Domestic ☐ Domestic ☒ All

POD / Surface Data Report Avg Depth to Water Report Water Column Report

Clear Form iWATERS Menu Help

---

POD / SURFACE DATA REPORT 07/28/2008

(quarters are 1=NW 2=NE 3=SW 4=SE)  
(quarters are biggest to smallest X Y are

DB File Nbr	(acre ft per annum)	Use	Diversion	Owner	POD Number	Source	Tws	Rng	Sec	q	q	q	Zone
SJ 00028	IND	81	BURLINGTON RESOURCES OIL & GAS	SJ 00028	Shallow	29N	08W	01	2	1	4		

Record Count: 1

Done Internet

Start | Inbox - Micro... | CygNet Visio... | CygNet Expl... | Heard Com 2... | BGT Permitti... | Pit Rule - Site... | New Mexico... | 10:44 AM

Gonzales 1

API #30-045-24487

S01, T29N, R08W 1095' FSL & 1120' FEL SE ¼ SE ¼

Lat. 36.45.00 N Long 107.37.21 W

New Mexico Office of the State Engineer - Microsoft Internet Explorer

File Edit View Favorites Tools Help

Back Forward Stop Home Search Favorites Print Mail News RSS Feeds

Address http://waters.ose.state.nm.us:7001/WATERS/WellAndSurfaceDispatcher Go Links

---

*New Mexico Office of the State Engineer*  
**POD Reports and Downloads**

Township:  Range:  Sections:

NAD27 X:  Y:  Zone:  Search Radius:

County:  Basin:  Number:  Suffix:

Owner Name: (First)  (Last)  ☐ Non-Domestic ☐ Domestic ☒ All

---

**AVERAGE DEPTH OF WATER REPORT 07/28/2008**

										(Depth Water in Feet)		
Bsn	Tws	Rng	Sec	Zone	X	Y	Wells	Min	Max	Avg		
SJ	29N	08W	01				1	300	300	300		

Record Count: 1

Done

Start | Inbox - M... | CygNet Vi... | CygNet E... | Heard Co... | BGT Permi... | Pit Rule - ... | New Mexi... | S01\_T29N... | 10:45 AM

Gonzales 1  
API #30-045-24487  
S01, T29N, R08W 1095' FSL & 1120' FEL SE ¼ SE ¼  
Lat. 36.45.00 N Long 107.37.21 W

New Mexico Office of the State Engineer - Microsoft Internet Explorer

File Edit View Favorites Tools Help

Back Forward Stop Home Search Favorites Print Mail News RSS Feeds

Address http://waters.osse.state.nm.us:7001/WATERS/WellAndSurfaceDispatcher Go Links

---

New Mexico Office of the State Engineer  
POD Reports and Downloads

---

Township: 29N Range: 08W Sections: 01

NAD27 X Y Zone Search Radius

County: SJ Basin: Number Suffix

Owner Name (First) (Last) ☐ Non-Domestic ☐ Domestic ☒ All

POD / Surface Data Report Avg Depth to Water Report Water Column Report

Clear Form WATERS Menu Help

---

WATER COLUMN REPORT 07/28/2008

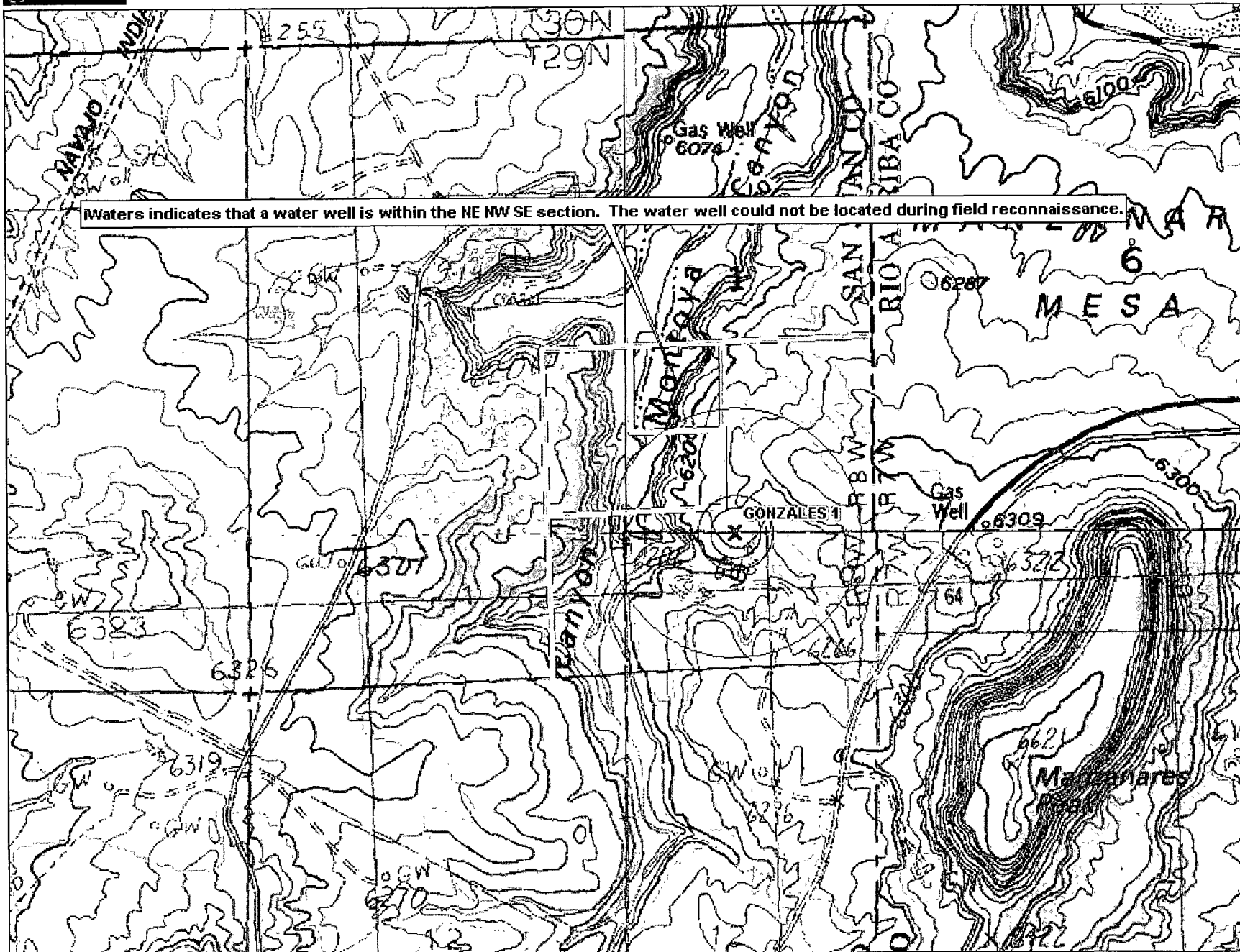
(quarters are 1=NW 2=NE 3=SW 4=SE)  
(quarters are biggest to smallest)

POD Number	Tws	Rng	Sec	q	q	q	Zone	X	Y	Depth Well	Depth Water	Water (in feet) Column
SJ 00028	29N	08W	01	2	1	4				606	300	306

Record Count: 1

Done Internet

Start Inbox - Mi... CygNet Vi... CygNet E... Heard Co... BGT Permi... Pit Rule - ... New Mexi... S01\_T29N... 10:45 AM



Data use subject to license

© 2006 DeLorme. Topo USA® 6.0.

www.delorme.com



Data Zoom 14-0

1607

Offset to Gonzales 1 API # 30-045-24487

E

Elevation 6208' GL

30-045-21778

DATA SHEET FOR DEEP GROUND BED CATHODIC PROTECTION WELLS  
NORTHWESTERN NEW MEXICO

(Submit 3 copies to OCD Aztec Office)

Operator MERIDIAN OIL Location: Unit 0/SE Sec. 1 Twp 29 Rng 8Name of Well/Wells or Pipeline Serviced HOWELL C #1A

cps 1086w

Elevation 6208' Completion Date 6/22/77 Total Depth 440' Land Type\* N/ACasing, Sizes, Types & Depths N/AIf Casing is cemented, show amounts & types used N/AIf Cement or Bentonite Plugs have been placed, show depths & amounts used  
N/A

Depths &amp; thickness of water zones with description of water when possible:

Fresh, Clear, Salty, Sulphur, Etc. WET AT 200'

RECEIVED

MAY 31 1991

Depths gas encountered: N/AOIL CON. DIV  
DIST. 3Type & amount of coke breeze used: 56 SACKSDepths anodes placed: 400', 390', 380', 370', 360', 322', 314', 306', 298', 290'Depths vent pipes placed: 400' OF 1" PVC VENT PIPEVent pipe perforations: 220'Remarks: gb #1

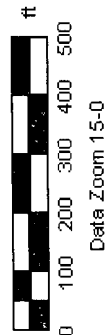
If any of the above data is unavailable, please indicate so. Copies of all logs, including Drillers Log, Water Analyses & Well Bore Schematics should be submitted when available. Unplugged abandoned wells are to be included.

\*Land Type may be shown: F-Federal; I-Indian; S-State; P-Fee.  
If Federal or Indian, add Lease Number.

# **APPENDIX C**

## **Aerial Photo**

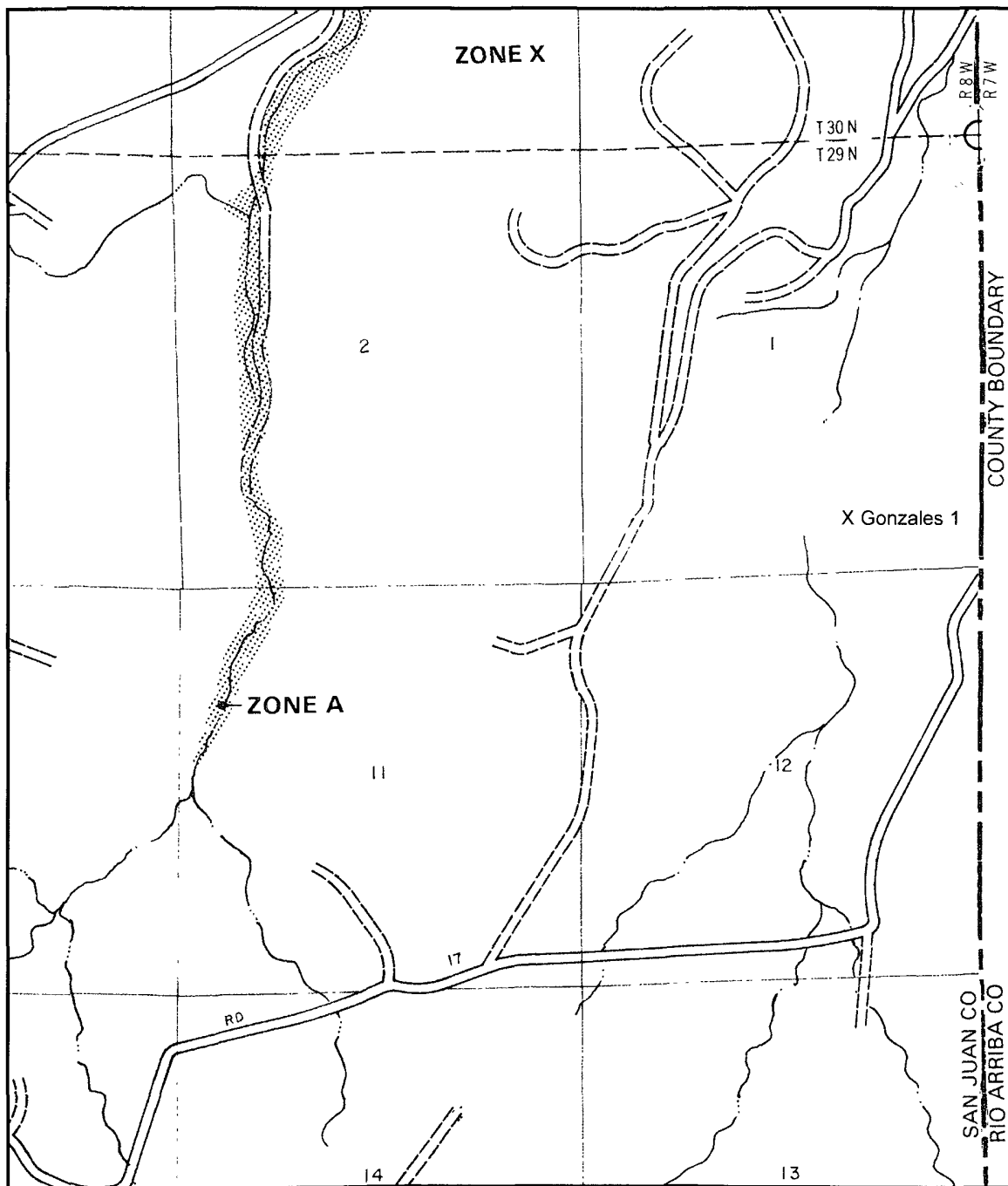




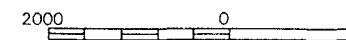
Data use subject to license  
© 2006 DeLorme Topo USA® 6.0  
www.delorme.com

Radii denote 200 feet, 300 feet and 1,000 feet from location

**APPENDIX D**  
**FEMA 100-year Floodplain Map**



APPROXIMATE SCALE



APPENDIX D

NATIONAL FLOOD INSURANCE PROGRAM

**FIRM**  
FLOOD INSURANCE RATE MAP

SAN JUAN COUNTY,  
NEW MEXICO  
UNINCORPORATED AREAS

PANEL 575 OF 1450  
(SEE MAP INDEX FOR PANELS NOT PRINTED)



PANEL LOCATION

COMMUNITY-PANEL NUMBER  
350064 0575

EFFECTIVE DATE:  
AUGUST 4, 1988



Federal Emergency Management Agency

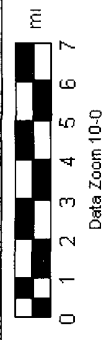
This is an official copy of a portion of the above referenced flood map. It was extracted using F-MIT On-Line. This map does not reflect changes or amendments which may have been made subsequent to the date on the title block. For the latest product information about National Flood Insurance Program flood maps check the FEMA Flood Map Store at [www.msc.fema.gov](http://www.msc.fema.gov)

# **APPENDIX E**

## **Municipal Boundary Map**



Data use subject to license  
© 2006 DeLorme Topo USA® 6.0  
www.delorme.com



The belowgrade tank is located within the Dakota Operating Area.

# **APPENDIX F**

## **Mine Map**

# MMQonline Public Version

## Mines, Mills & Quarries Commodity Groups

- ◆ Aggregate & Stone Mines
- ★ Coal Mines
- ☆ Industrial Minerals Mines
- ▽ Industrial Minerals Mills
- ☒ Metal Mines and Mill Concentrate
- ☐ Potash Mines & Refineries
- ⚙ Smelters & Refinery Ops.
- ⚛ Uranium Mines
- ⚙ Uranium Mills

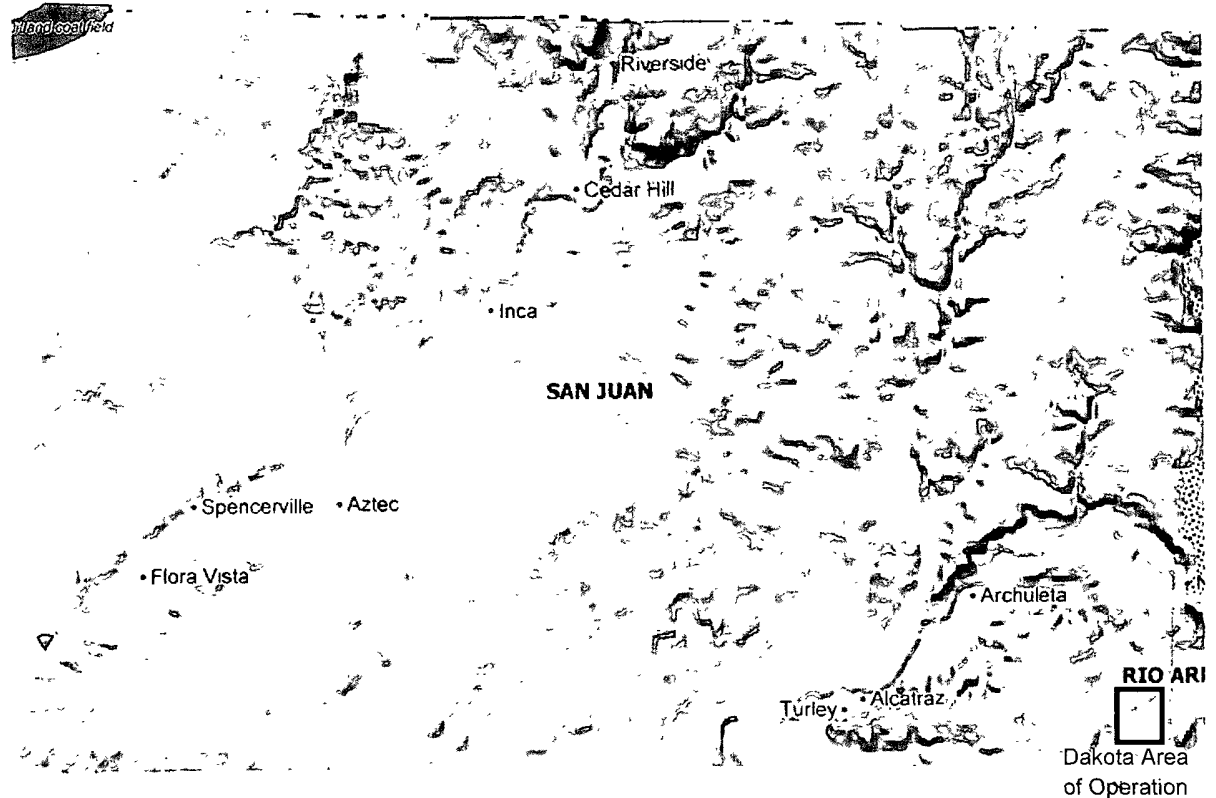
## Population

- Cities (2000 Census)

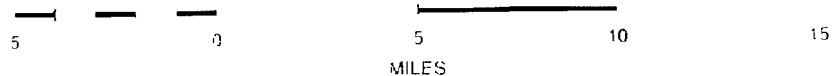
## Transportation

- Railways
- Interstate Highways
- Major Roads

## Hydrology



SCALE 1 : 284 073



The belowgrade tank is located within the Dakota Area of Operation No mines are located in this area