

Submit 3 Copies To Appropriate District  
Office  
District I  
1625 N. French Dr., Hobbs, NM 87240  
District II  
1301 W. Grand Ave., Artesia, NM 88210  
District III  
1000 Rio Brazos Rd., Aztec, NM 87410  
District IV  
1220 S. St. Francis Dr., Santa Fe, NM  
87505

State of New Mexico  
Energy, Minerals and Natural Resources

OIL CONSERVATION DIVISION  
1220 South St. Francis Dr.  
Santa Fe, NM 87505

Form C-103  
June 19, 2008

<b>SUNDRY NOTICES AND REPORTS ON WELLS</b> (DO NOT USE THIS FORM FOR PROPOSALS TO DRILL OR TO DEEPEN OR PLUG BACK TO A DIFFERENT RESERVOIR. USE "APPLICATION FOR PERMIT" (FORM C-101) FOR SUCH PROPOSALS.)		WELL API NO. 30-039-27263
1. Type of Well: Oil Well <input type="checkbox"/> Gas Well <input checked="" type="checkbox"/> Other		5. Indicate Type of Lease STATE <input type="checkbox"/> FEE <input checked="" type="checkbox"/>
2. Name of Operator Energen Resources Corporation		6. State Oil & Gas Lease No.
3. Address of Operator 2010 Afton Place, Farmington, NM 87401		7. Lease Name or Unit Agreement Name: San Juan 32-5 Unit
4. Well Location Unit Letter <u>P</u> : <u>710</u> feet from the <u>South</u> line and <u>780</u> feet from the <u>East</u> line Section <u>23</u> Township <u>32N</u> Range <u>06W</u> NMPM County <u>Rio Arriba</u>		8. Well Number #101S
11. Elevation (Show whether DR, RKB, RT, GR, etc.) 6331' GL		9. OGRID Number 162928
		10. Pool name or Wildcat Basin FC

12. Check Appropriate Box to Indicate Nature of Notice, Report, or Other Data

NOTICE OF INTENTION TO:

PERFORM REMEDIAL WORK ☐ PLUG AND ABANDON ☐  
TEMPORARILY ABANDON ☐ CHANGE PLANS ☐  
PULL OR ALTER CASING ☐ MULTIPLE COMPL ☐  
DOWNHOLE COMMINGLE ☐

OTHER: Re-complete

☒

SUBSEQUENT REPORT OF:

REMEDIAL WORK ☐ ALTERING CASING ☐  
COMMENCE DRILLING OPNS. ☐ P AND A ☐  
CASING/CEMENT JOB ☐

OTHER:

☐

13. Describe proposed or completed operations. (Clearly state all pertinent details, and give pertinent dates, including estimated date of starting any proposed work). SEE RULE 1103. For Multiple Completions: Attach wellbore diagram of proposed completion or recompletion.

Energen Resources plans to re-complete the San Juan 32-5 Unit #101S as follows:

\*Set a plug and whipstock at 2784' TVD and mill a window from 2772' - 2778'.

\*Drill a curve and horizontal lateral to a MD of 4786' (2986' TVD) with a BHL of 1500' FSL, 2500' FEL.

\*Line the lateral with a perforated 4-1/2", 11.6#, J-55 LTC liner string.

\*A 2-3/8" tubing string will be landed @ 2983' TVD in the 7" casing.

RCVD NOV 18 '09  
OIL CONS. DIV.

Attached is a revised C-102 and directional plan depicting this recompletion.

Spud Date:

Rig Release Date:

NOTIFY AZTEC OGD 24 HRS.  
PRIOR TO CASING & CEMENT

I hereby certify that the information above is true and complete to the best of my knowledge and belief.

SIGNATURE [Signature] TITLE Drilling Engineer DATE 11/16/2009  
Type or print name Jason Kincaid E-mail address: jkincaid@energen.com PHONE 505.325.6800

For State Use Only

APPROVED BY [Signature] TITLE Deputy Oil & Gas Inspector, District #3 DATE NOV 20 2009

Conditions of Approval (if any):

P.A.

Hold C104

for Directional Survey  
and "As Drilled" plat

**District I**  
1625 N. French Dr., Hobbs, NM 88240  
**District II**  
1301 W. Grand Avenue, Artesia, NM 88210  
**District III**  
1000 Rio Brazos Rd., Aztec, NM 87410  
**District IV**  
1220 S. St. Francis Dr., Santa Fe, NM 87505

State of New Mexico  
Energy, Minerals & Natural Resources Department  
**OIL CONSERVATION DIVISION**  
1220 South St. Francis Dr.  
Santa Fe, NM 87505

Form C-102  
Revised October 12, 2005  
Submit to Appropriate District Office  
State Lease - 4 Copies  
Fee Lease - 3 Copies

☒ AMENDED REPORT

**WELL LOCATION AND ACREAGE DEDICATION PLAT**

<sup>1</sup> API Number 30-039-27263	<sup>2</sup> Pool Code 71629	<sup>3</sup> Pool Name Basin Fruitland Coal
<sup>4</sup> Property Code 21996	<sup>5</sup> Property Name San Juan 32-5 Unit	<sup>6</sup> Well Number 101S
<sup>7</sup> OGRID No. 162928	<sup>8</sup> Operator Name ENERGEN RESOURCES CORPORATION	<sup>9</sup> Elevation 6331'

<sup>10</sup> Surface Location

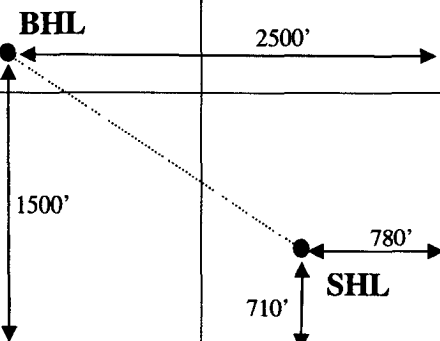
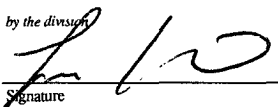
UL or lot no. P	Section 23	Township 32N	Range 6W	Lot Idn	Feet from the 710	North/South line SOUTH	Feet from the 780	East/West line EAST	County RIO ARriba
--------------------	---------------	-----------------	-------------	---------	----------------------	---------------------------	----------------------	------------------------	----------------------

<sup>11</sup> Bottom Hole Location If Different From Surface

UL or lot no. K	Section 23	Township 32N	Range 6W	Lot Idn	Feet from the 1500	North/South line SOUTH	Feet from the 2500	East/West line EAST	County RIO ARriba
--------------------	---------------	-----------------	-------------	---------	-----------------------	---------------------------	-----------------------	------------------------	----------------------

<sup>12</sup> Dedicated Acres 320 E/2	<sup>13</sup> Joint or Infill	<sup>14</sup> Consolidation Code	<sup>15</sup> Order No.
--	-------------------------------	----------------------------------	-------------------------

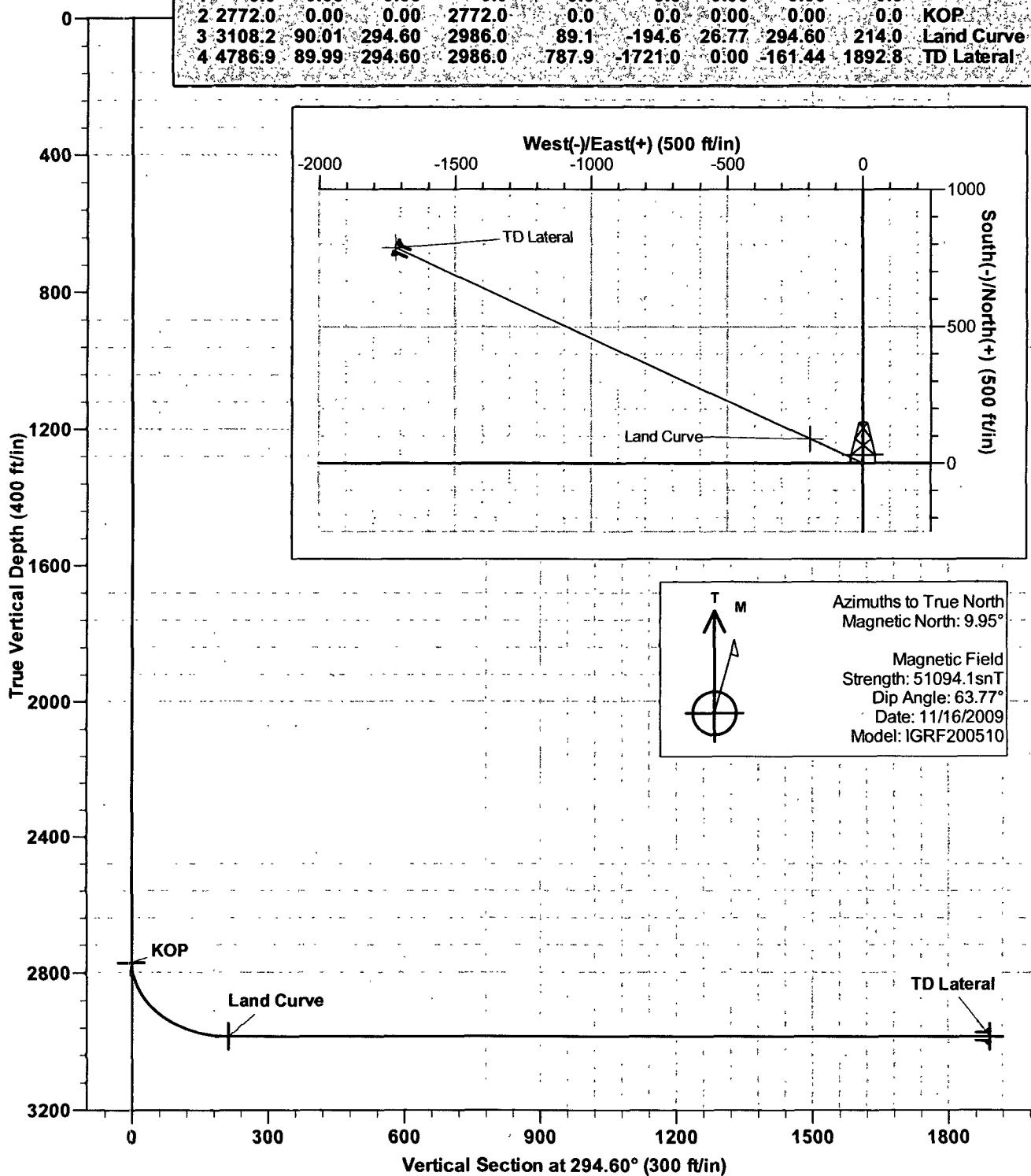
No allowable will be assigned to this completion until all interests have been consolidated or a non-standard unit has been approved by the division.

<div>16</div> <div>23</div> <div></div>	<div><sup>17</sup> OPERATOR CERTIFICATION</div> <p>I hereby certify that the information contained herein is true and complete to the best of my knowledge and belief, and that this organization either owns a working interest or unleased mineral interest in the land including the proposed bottom hole location or has a right to drill this well at this location pursuant to a contract with an owner of such a mineral or working interest, or to a voluntary pooling agreement or a compulsory pooling order heretofore entered by the division.</p> <p> 11/16/2009</p> <p>Signature Date</p> <p>JASON KINCAID</p> <p>Printed Name</p>
	<div><sup>18</sup> SURVEYOR CERTIFICATION</div> <p>I hereby certify that the well location shown on this plat was plotted from field notes of actual surveys made by me or under my supervision, and that the same is true and correct to the best of my belief.</p> <p>OCTOBER 25, 2002</p> <p>Date of Survey</p> <p>Original Survey Conducted and Recorded By: Jason C. Edwards</p>
	15269

Certificate Number

## SECTION DETAILS

Sec	MD	Inc	Azi	TVD	+N/-S	+E/-W	DLeg	TFace	VSec	Target
1	0.0	0.00	0.00	0.0	0.0	0.0	0.00	0.00	0.0	
2	2772.0	0.00	0.00	2772.0	0.0	0.0	0.00	0.00	0.0	KOP
3	3108.2	90.01	294.60	2986.0	89.1	-194.6	26.77	294.60	214.0	Land Curve
4	4786.9	89.99	294.60	2986.0	787.9	-1721.0	0.00	-161.44	1892.8	TD Lateral



**Energen Resources**  
 Directional Plan

**Company:** Energen Resources Corp.  
**Project:** SJBR-Sec.23-T32N-R06W  
**Site:** Eul Canyon  
**Well:** San Juan 32-5 Unit #101S  
**Wellbore:** Re-Entry Sidetrack OPE FTC  
**Design:** Plan #1

**Local Co-ordinate Reference:** Well San Juan 32-5 Unit #101S  
**TVD Reference:** KB @ 6346.0ft (Drilling Rig)  
**MD Reference:** KB @ 6346.0ft (Drilling Rig)  
**North Reference:** True  
**Survey Calculation Method:** Minimum Curvature  
**Database:** EDM 2003.16 Single User Db

**Planned Survey**

MD (ft)	TVD (ft)	Inc (°)	Azi (°)	Build (°/100ft)	N/S (ft)	E/W (ft)	V. Sec (ft)
4,000.0	2,985.9	90.00	294.60	0.00	460.3	-1,005.5	1,105.8
4,100.0	2,985.9	90.00	294.60	0.00	502.0	-1,096.4	1,205.8
4,200.0	2,986.0	90.00	294.60	0.00	543.6	-1,187.3	1,305.8
4,300.0	2,986.0	90.00	294.60	0.00	585.2	-1,278.3	1,405.8
4,400.0	2,986.0	90.00	294.60	0.00	626.8	-1,369.2	1,505.8
4,500.0	2,986.0	90.00	294.60	0.00	668.5	-1,460.1	1,605.8
4,600.0	2,986.0	89.99	294.60	0.00	710.1	-1,551.0	1,705.8
4,700.0	2,986.0	89.99	294.60	0.00	751.7	-1,642.0	1,805.8
4,786.9	2,986.0	89.99	294.60	0.00	787.9	-1,721.0	1,892.8

**TD Lateral**
**Targets**
**Target Name**

- hit/miss target - Shape	Dip Angle (°)	Dip Dir. (°)	TVD (ft)	+N/-S (ft)	+E/-W (ft)	Northing (ft)	Easting (ft)	Latitude	Longitude
KOP - plan hits target - Point	0.00	0.00	2,772.0	0.0	0.0	2,171,034.92	1,298,589.82	36° 57' 38.000 N	107° 25' 12.000 W
TD Lateral - plan hits target - Point	0.00	0.00	2,986.0	787.9	-1,721.0	2,171,843.90	1,296,878.62	36° 57' 45.790 N	107° 25' 33.204 W
Land Curve - plan hits target - Point	0.00	0.00	2,986.0	89.1	-194.6	2,171,126.41	1,298,396.33	36° 57' 38.881 N	107° 25' 14.398 W

**Casing Points**

Measured Depth (ft)	Vertical Depth (ft)	Name	Casing Diameter (")	Hole Diameter (")
4,786.0	2,986.0	Liner	4-1/2	6-1/4

Checked By: \_\_\_\_\_ Approved By: \_\_\_\_\_ Date: \_\_\_\_\_