

District I  
1625 N. French Dr., Hobbs, NM 88240  
District II  
1301 W. Grand Avenue, Artesia, NM 88210  
District III  
1000 Rio Brazos Rd., Aztec, NM 87410  
District IV  
1220 S. St. Francis Dr., Santa Fe, NM 87505

State of New Mexico  
Energy, Minerals & Natural Resources

Form C-104  
Revised June 10, 2003

Oil Conservation Division  
1220 South St. Francis Dr.  
Santa Fe, NM 87505

Submit to Appropriate District Office

5 Copies

☒ AMENDED REPORT

**I. REQUEST FOR ALLOWABLE AND AUTHORIZATION TO TRANSPORT**

<sup>1</sup> Operator name and Address <b>WILLIAMS PRODUCTION COMPANY</b> P.O. Box 640 Aztec, NM 87410		<sup>2</sup> OGRID Number <b>120782</b>
		<sup>3</sup> Reason for Filing Code/ Effective Date <b>CORRECT POOL-1/1/09</b>
<sup>4</sup> API Number <b>30-039-23484</b>	<sup>5</sup> Pool Name <b>BASIN MANCOS</b>	<sup>6</sup> Pool Code <b>97232</b>
<sup>7</sup> Property Code <b>17033</b>	<sup>8</sup> Property Name <b>ROSA UNIT</b>	<sup>9</sup> Well Number <b>116</b>

**II. <sup>10</sup> Surface Location**

UL or lot no. <b>L</b>	Section <b>24</b>	Township <b>31N</b>	Range <b>6W</b>	Lot.Idn	Feet from the <b>1050</b>	North/South Line <b>NORTH</b>	Feet from the <b>790</b>	East/West line <b>EAST</b>	County <b>RIO ARRIBA</b>
---------------------------	----------------------	------------------------	--------------------	---------	------------------------------	----------------------------------	-----------------------------	-------------------------------	-----------------------------

**<sup>11</sup> Bottom Hole Location**

UL or lot no.	Section	Township	Range	Lot Idn	Feet from the	North/South line	Feet from the	East/West line	County
<sup>12</sup> Lse Code	<sup>13</sup> Producing Method Code	<sup>14</sup> Gas Connection Date	<sup>15</sup> C-129 Permit Number	<sup>16</sup> C-129 Effective Date	<sup>17</sup> C-129 Expiration Date				

**III. Oil and Gas Transporters**

<sup>18</sup> Transporter OGRID	<sup>19</sup> Transporter Name and Address	<sup>20</sup> O/G/W
<b>009018</b>	<b>GIANT REFINING</b> <b>P O BOX 12999</b> <b>SCOTTSDALE AZ 85267</b>	<b>O</b>
<b>025244</b>	<b>WILLIAMS FIELD SERVICES</b> <b>P O BOX 645</b> <b>TULSA OK 74102</b>	<b>G</b>

Pool Name changed from Laguna Seca Gallup to Basin Mancos Order #13063. All other information from original report remains the same.

**IV. Well Completion Data**

<sup>21</sup> Spud Date	<sup>22</sup> Ready Date <b>(9-19-84)</b>	<sup>23</sup> TD	<sup>24</sup> PBSD	<sup>25</sup> Perforations <b>6766-7266</b>	<sup>26</sup> DHC, MC AZT-
<sup>27</sup> Hole Size	<sup>28</sup> Casing & Tubing Size	<sup>29</sup> Depth Set	<sup>30</sup> Sacks Cement		
				<b>RCUD DEC 28 '09</b>	
				<b>OIL CONS. DIV.</b>	
				<b>DIST. 3</b>	

**VI. Well Test Data**

<sup>31</sup> Date New Oil	<sup>32</sup> Gas Delivery Date	<sup>33</sup> Test Date	<sup>34</sup> Test Length	<sup>35</sup> Tbg. Pressure	<sup>36</sup> Csg. Pressure
<sup>37</sup> Choke Size	<sup>38</sup> Oil	<sup>39</sup> Water	<sup>40</sup> Gas		<sup>41</sup> Test Method
<sup>42</sup> I hereby certify that the rules of the Oil Conservation Division have been complied with and that the information given above is true and complete to the best of my knowledge and belief. Signature: <i>Heather Riley</i>			OIL CONSERVATION DIVISION		
Printed name: Heather Riley			Approved by: <i>[Signature]</i>		
Title: Regulatory Specialist			Title: <b>DEPUTY OIL &amp; GAS INSPECTOR, DIST. 3</b>		
E-mail Address: <a href="mailto:Heather.riley@williams.com">Heather.riley@williams.com</a>			Approval Date: <b>DEC 30 2009</b>		
Date: 12/28/09		Phone: 505-634-4222			

*[Handwritten mark]*

UNITED STATES  
DEPARTMENT OF THE INTERIOR  
BUREAU OF LAND MANAGEMENT

SUBMIT IN DUPLICATE

(See other instructions on reverse side)

FORM APPROVED  
OMB NO. 1004-0137  
Expires: February 28, 1995

CORRECTED WELL COMPLETION OR RECOMPLETION REPORT AND LOG*									
1a. TYPE OF WELL: <input type="checkbox"/> OIL WELL <input checked="" type="checkbox"/> GAS WELL <input type="checkbox"/> DRY <input type="checkbox"/> OTHER									
b. TYPE OF COMPLETION: <input type="checkbox"/> NEW WELL <input type="checkbox"/> WORKOVER <input type="checkbox"/> DEEPEN <input type="checkbox"/> PLUG BACK <input type="checkbox"/> DIFF RESVR <input checked="" type="checkbox"/> X OTHER									
2. NAME OF OPERATOR WILLIAMS PRODUCTION COMPANY									
3. ADDRESS AND TELEPHONE NO P.O. Box 640, Aztec, NM 87410 (505) 634-4208									
4. LOCATION OF WELL (Report location clearly and in accordance with any State requirements)* At Surface. 1050' FNL & 790' FEL, Sec 24, T31N, R6W At top production interval reported below.: Same At total depth: Same									
14 PERMIT NO									
DATE ISSUED									
12 COUNTY OR P									
13 STATE									
15 DATE SPUDDED									
16 DATE T D REACHED									
17 DATE COMPLETED (READY TO PRODUCE)									
18 ELEVATIONS (DK, RKB, RT, GR, ETC.)*									
19 ELEVATION CASINGHEAD									
20 TOTAL DEPTH, MD & TVD									
21 PLUG, BACK T D, MD & TVD									
22 IF MULTICOMP., HOW MANY									
23 INTERVALS DRILLED BY									
24 PRODUCING INTERVAL(S), OF THIS COMPLETION - TOP, BOTTOM, NAME (MD AND TVD)*									
25 WAS DIRECTIONAL SURVEY MADE									
26 TYPE ELECTRIC AND OTHER LOGS RUN									
27 WAS WELL CORED									
28 CASING REPORT (Report all strings set in well)									
CASING SIZE/GRADE									
WEIGHT, LB / FT									
DEPTH SET (MD)									
HOLE SIZE									
TOP OF CEMENT, CEMENTING RECORD									
AMOUNT PULLED									
29 LINER RECORD									
30 TUBING RECORD									
SIZE									
TOP (MD)									
BOTTOM (MD)									
SACKS CEMENT*									
SCREEN (MD)									
SIZE									
DEPTH SET (MD)									
PACKER SET (MD)									
32 ACID, SHOT, FRACTURE, CEMENT SQUEEZE, ETC									
DEPTH INTERVAL (MD)									
AMOUNT AND KIND OF MATERIAL USED									
33 PRODUCTION									
DATE OF FIRST PRODUCTION									
PRODUCTION METHOD (Flowing, gas lift, pumping-size and type of pump)									
WELL STATUS (PRODUCING OR SI)									
DATE OF TEST									
TESTED									
CHOKE SIZE									
PROD'N FOR TEST PERIOD									
OIL - BBL									
GAS - MCF									
WATER - BBL									
GAS-OIL RATIO									
FLOW TBG PRESS									
CASING PRESSURE									
CALCULATED 24-HOUR RATE									
OIL - BBL									
GAS - MCF									
WATER - BBL									
OIL GRAVITY-API (CORR.)									
34 DISPOSITION OF GAS (Sold, used for fuel, vented, etc.)									
TEST WITNESSED BY									
35 LIST OF ATTACHMENTS									
36 I hereby certify that the foregoing and attached information is complete and correct as determined from all available records									

SIGNED

TITLE Regulatory Specialist

DATE 12/28/02

District I  
1625 N. French Dr., Hobbs, NM 88240

District II  
1301 W Grand Avenue, Artesia, NM 88210

District III  
1000 Rio Brazos Rd., Aztec, NM 87410

District IV  
1220 S St Francis Dr., Santa Fe, NM 87505

State of New Mexico  
Energy, Minerals & Natural Resources Department

OIL CONSERVATION DIVISION  
1220 South St. Francis Dr.  
Santa Fe, NM 87505

Form C-102  
Revised October 12, 2005  
Instructions on back  
Submit to Appropriate District Office  
State Lease - 4 Copies  
Fee Lease - 3 Copies

☒ AMENDED REPORT

WELL LOCATION AND ACREAGE DEDICATION PLAT

<sup>1</sup> API Number 30-039-23484	<sup>2</sup> Pool Code 97232 / 71599	<sup>3</sup> Pool Name BASIN MANCOS / BASIN DAKOTA
<sup>4</sup> Property Code 17033	<sup>5</sup> Property Name ROSA UNIT	<sup>6</sup> Well Number 116
<sup>7</sup> GRID No 120782	<sup>8</sup> Operator Name WILLIAMS PRODUCTION COMPANY	<sup>9</sup> Elevation 6280'

<sup>10</sup> Surface Location

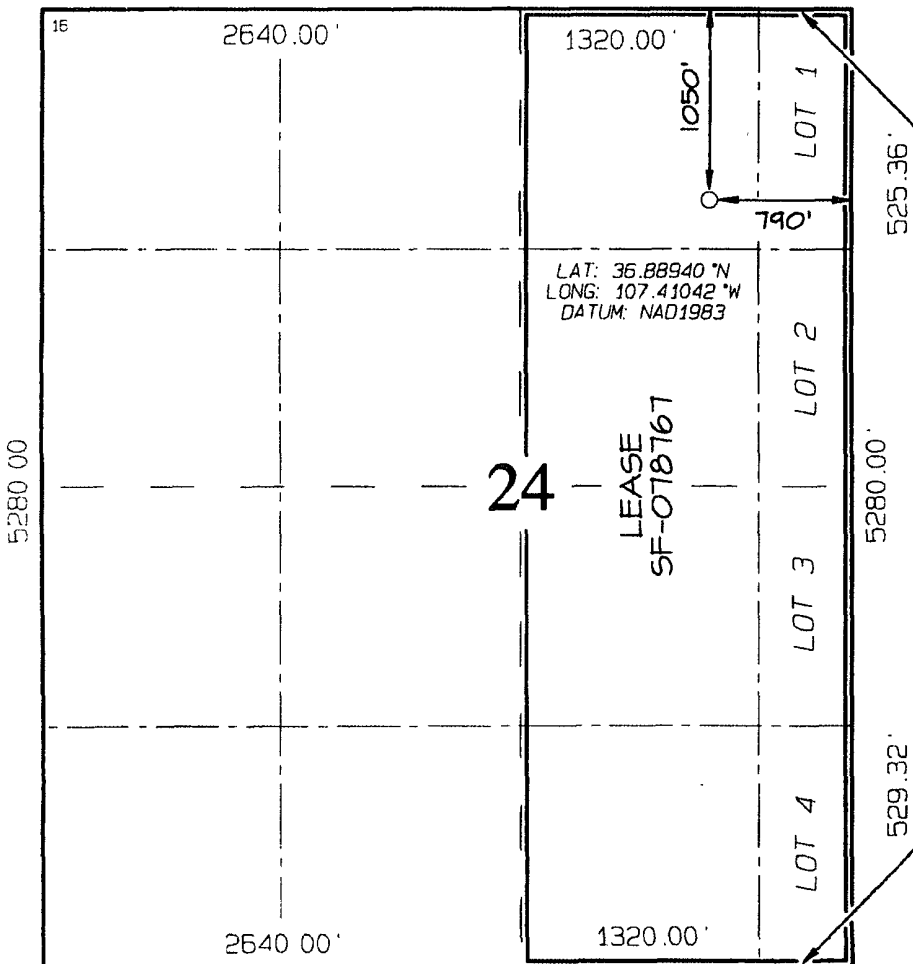
UL or lot no. B	Section 24	Township 31N	Range 6W	Lot Idn	Feet from the 1050	North/South line NORTH	Feet from the 790	East/West line EAST	County RIO ARriba
--------------------	---------------	-----------------	-------------	---------	-----------------------	---------------------------	----------------------	------------------------	----------------------

<sup>11</sup> Bottom Hole Location If Different From Surface

UL or lot no.	Section	Township	Range	Lot Idn	Feet from the	North/South line	Feet from the	East/West line	County
---------------	---------	----------	-------	---------	---------------	------------------	---------------	----------------	--------

<sup>12</sup> Dedicated Acres 223.92 Acres - (E/2)	<sup>13</sup> Joint or Infill	<sup>14</sup> Consolidation Code	<sup>15</sup> Order No
---	-------------------------------	----------------------------------	------------------------

NO ALLOWABLE WILL BE ASSIGNED TO THIS COMPLETION UNTIL ALL INTERESTS HAVE BEEN CONSOLIDATED  
OR A NON-STANDARD UNIT HAS BEEN APPROVED BY THE DIVISION



<sup>17</sup> OPERATOR CERTIFICATION

I hereby certify that the information contained herein is true and complete to the best of my knowledge and belief, and that this organization either owns a working interest or unleased mineral interest in the land including the proposed bottom-hole location or has a right to drill this well at this location pursuant to a contract with an owner of such a mineral or working interest, or to a voluntary pooling agreement or a compulsory pooling order heretofore entered by the division.

*Heather Riley* 12/18/09  
Signature Date  
*Heather Riley*  
Printed Name

<sup>18</sup> SURVEYOR CERTIFICATION

I hereby certify that the well location shown on this plat was plotted from field notes of actual surveys made by me or under my supervision, and that the same is true and correct to the best of my belief.

INFORMATION OF RECORD  
Date Drawn: AUGUST 18, 2009

Signature and Seal of Professional Surveyor



*Jason C. Edwards*  
Certificate Number 15269