

District I  
1625 N. French Dr., Hobbs, NM 88240  
District II  
1301 W. Grand Avenue, Artesia, NM 88210  
District III  
1000 Rio Brazos Road, Aztec, NM 87410  
District IV  
1220 S. St. Francis Dr., Santa Fe, NM 87505

State of New Mexico  
Energy Minerals and Natural Resources

Oil Conservation Division  
1220 South St. Francis Dr.  
Santa Fe, NM 87505

Form C-101  
Revised June 10, 2003

Submit to appropriate District Office  
State Lease - 6 Copies  
Fee Lease - 5 Copies

☐ AMENDED REPORT

**APPLICATION FOR PERMIT TO DRILL, RE-ENTER, DEEPEN, PLUGBACK, OR ADD A ZONE**

<sup>1</sup> Operator Name and Address West Largo Corp. 8801 S. Yale, Suite 240 Tulsa, OK 74137-3535		<sup>2</sup> OGRID Number 37197
		<sup>3</sup> APL Number 30 - 045-32015
<sup>3</sup> Property Code 14174	<sup>5</sup> Property Name Kendall 24	<sup>6</sup> Well No. 1

**<sup>7</sup> Surface Location**

UL or lot no.	Section	Township	Range	Lot Idn	Feet from the	North/South line	Feet from the	East/West line	County
P	24	29N	10W		675	South	695	East	San Juan

**<sup>8</sup> Proposed Bottom Hole Location If Different From Surface**

UL or lot no.	Section	Township	Range	Lot Idn	Feet from the	North/South line	Feet from the	East/West line	County
<sup>9</sup> Proposed Pool 1 Basin Fruitland Coal					<sup>10</sup> Proposed Pool 2				

<sup>11</sup> Work Type Code N	<sup>12</sup> Well Type Code G	<sup>13</sup> Cable/Rotary R	<sup>14</sup> Lease Type Code P	<sup>15</sup> Ground Level Elevation 5526'
<sup>16</sup> Multiple N	<sup>17</sup> Proposed Depth 2104'	<sup>18</sup> Formation Lewis	<sup>19</sup> Contractor Not selected	<sup>20</sup> Spud Date December 1, 2003

**<sup>21</sup> Proposed Casing and Cement Program**

Hole Size	Casing Size	Casing weight/foot	Setting Depth	Sacks of Cement	Estimated TOC
8.750"	7.000"	20	200	55	surface
6.250"	4.500"	10.5	2104	180	surface

<sup>22</sup> Describe the proposed program. If this application is to DEEPEN or PLUG BACK, give the data on the present productive zone and proposed new productive zone. Describe the blowout prevention program, if any. Use additional sheets if necessary. Drill 8 3/4" hole to 200' using fresh water mud. Run and cement surface casing to surface. WOC 12 hours. Nipple up 7 1/16" 3M BOPE. Pressure test surface casing and BOPE to minimum of 600 psig for 15 minutes. Drill 6 1/4" hole to TD using polymer and water. Log well. Run production casing and cement to surface in a single stage. Move out drilling rig. Move in completion equipment. Run cased hole correlation logs. Test production casing to 3500 psig for 15 minutes. Perforate select Fruitland Coal intervals and stimulate with a foamed KCl water based fluid and sand. Install production equipment and gas sales meter.

<sup>23</sup> I hereby certify that the information given above is true and complete to the best of my knowledge and belief.

Signature:

Printed name: Robert E. Fielder

Title: Agent

E-mail Address: pmci@acs-online.net

Date: November 17, 2003

Phone: 505.632.3869

OIL CONSERVATION DIVISION

Approved by:

Title: DEPUTY OIL & GAS INSPECTOR, DIST. #3

Approval Date:

NOV 19 2003

Expiration Date:

NOV 19 2004

Conditions of Approval:

Attached ☐

District I  
PO Box 1980, Hobbs, NM 88241-1980

District II  
PO Drawer 00, Artesia, NM 88211-0719

District III  
1000 Rio Brazos Rd., Aztec, NM 87410

District IV  
PO Box 2088, Santa Fe, NM 87504-2088

State of New Mexico  
Energy, Minerals & Natural Resources Department

OIL CONSERVATION DIVISION  
PO Box 2088  
Santa Fe, NM 87504-2088

Form C-102  
Revised February 21, 1994  
Instructions on back  
Submit to Appropriate District Office  
State Lease - 4 Copies  
Fee Lease - 3 Copies

☐ AMENDED REPORT

### WELL LOCATION AND ACREAGE DEDICATION PLAT

*API Number <b>30-045-32015</b>		*Pool Code 71629	*Pool Name BASIN FRUITLAND COAL
*Property Code 14174	*Property Name KENDALL 24		*Well Number 1
*OGRID No. 37197	*Operator Name WEST LARGO CORPORATION		*Elevation 5526'

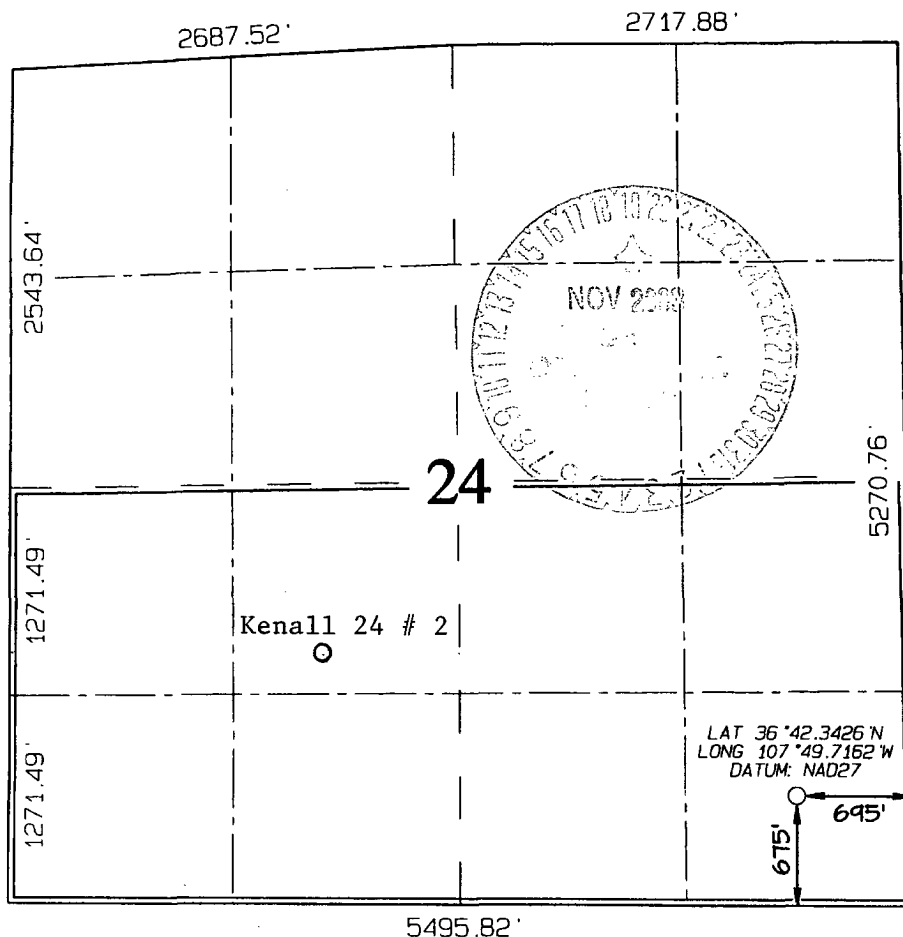
#### <sup>10</sup> Surface Location

UL or lot no.	Section	Township	Range	Lot Idn	Feet from the	North/South line	Feet from the	East/West line	County
P	24	29N	10W		675	SOUTH	695	EAST	SAN JUAN

#### <sup>11</sup> Bottom Hole Location If Different From Surface

UL or lot no.	Section	Township	Range	Lot Idn	Feet from the	North/South line	Feet from the	East/West line	County
<sup>12</sup> Dedicated Acres 320.0 Acres - S/2					<sup>13</sup> Joint or Infill Y	<sup>14</sup> Consolidation Code	<sup>15</sup> Order No.		

NO ALLOWABLE WILL BE ASSIGNED TO THIS COMPLETION UNTIL ALL INTERESTS HAVE BEEN CONSOLIDATED  
OR A NON-STANDARD UNIT HAS BEEN APPROVED BY THE DIVISION



#### <sup>17</sup> OPERATOR CERTIFICATION

I hereby certify that the information contained herein is true and complete to the best of my knowledge and belief.

*Robert E. Fielder*  
Signature

Robert E. Fielder  
Printed Name  
Agent

Title

November 17, 2003  
Date

#### <sup>18</sup> SURVEYOR CERTIFICATION

I hereby certify that the well location shown on this plat was plotted from field notes of actual surveys made by me or under my supervision, and that the same is true and correct to the best of my belief.

Survey Date: NOVEMBER 7, 2003

Signature and Seal of Professional Surveyor



*Jason C. Edwards*  
Certificate Number 15269